

Perioperative care in adults

[C] Evidence review for preoperative risk stratification tools

NICE guideline

Prognostic evidence review

November 2019

Draft for Consultation

*This evidence review was developed by
the National Guideline Centre*

Disclaimer

The recommendations in this guideline represent the view of NICE, arrived at after careful consideration of the evidence available. When exercising their judgement, professionals are expected to take this guideline fully into account, alongside the individual needs, preferences and values of their patients or service users. The recommendations in this guideline are not mandatory and the guideline does not override the responsibility of healthcare professionals to make decisions appropriate to the circumstances of the individual patient, in consultation with the patient and, where appropriate, their carer or guardian.

Local commissioners and providers have a responsibility to enable the guideline to be applied when individual health professionals and their patients or service users wish to use it. They should do so in the context of local and national priorities for funding and developing services, and in light of their duties to have due regard to the need to eliminate unlawful discrimination, to advance equality of opportunity and to reduce health inequalities. Nothing in this guideline should be interpreted in a way that would be inconsistent with compliance with those duties.

NICE guidelines cover health and care in England. Decisions on how they apply in other UK countries are made by ministers in the [Welsh Government](#), [Scottish Government](#), and [Northern Ireland Executive](#). All NICE guidance is subject to regular review and may be updated or withdrawn.

Copyright

© NICE 2019. All rights reserved. Subject to [Notice of rights](#).

Contents

1	Preoperative risk stratification tools	6
1.1	Review question: Which validated preoperative risk stratification tools best identify increased risk of mortality and morbidity in adults who will be undergoing surgery?	6
1.2	Introduction	6
1.3	PICO table	6
1.4	Clinical evidence	7
1.4.1	Included studies	7
1.4.2	Excluded studies	7
1.4.3	Summary of clinical studies included in the evidence review	8
1.4.4	Quality assessment of clinical studies included in the evidence review	16
1.1	Discrimination	16
1.2	Calibration	17
1.3	Economic evidence	19
1.3.1	Included studies	19
1.3.2	Excluded studies	19
1.4	Evidence statements	19
1.4.1	Clinical evidence statements	19
1.4.2	Health economic evidence statements	20
1.5	The committee's discussion of the evidence	20
1.5.1	Interpreting the evidence	20
1.5.2	Cost effectiveness and resource use	22
1.5.3	Other factors the committee took into account	22
	Appendices	36
	Appendix A: Review protocols	36
	Appendix B: Literature search strategies	42
	B.1 Clinical search literature search strategy	42
	B.2 Health Economics literature search strategy	45
	Appendix C: Clinical evidence selection	50
	Appendix D: Clinical evidence tables	51
	Appendix E: PROBAST checklist	77
	Appendix F: C-statistic plots	84
	Appendix G: Calibration plots	90
	Appendix H: Health economic evidence selection	93
	Appendix I: Health economic evidence tables	94
	Appendix J: Excluded studies	95
	J.1 Excluded clinical studies	95
	J.2 Excluded health economic studies	98

1 Preoperative risk stratification tools

1.1 Review question: Which validated preoperative risk stratification tools best identify increased risk of mortality and morbidity in adults who will be undergoing surgery?

1.2 Introduction

The conundrum facing all perioperative clinicians when evaluating patients for surgery remains how best to evaluate and quantify the risk of undergoing the anticipated procedure. There are a number of reasons why this is a key element of evaluation during the preoperative clinical encounter. Firstly, establishing objective understanding of the anticipated mortality and morbidity risk allows and directs discussions with other involved clinicians about the appropriateness of the planned surgery and whether it should proceed as planned, should be abbreviated, or whether alternative non-surgical options should be considered. Secondly, being able to quantify morbidity risk allows planning for post-operative destination, discussions about quality of life and recovery or convalescence and to give insight to the patient about the anticipated clinical course. Understanding these elements allows frank discussions about what the patients actually wish to achieve from the surgical encounter. Furthermore this opens the discussions amongst all parties for shared decision making about the best outcome decision that will meet the goals of the involved parties.

Thus it becomes incumbent on perioperative clinicians to find robust, reliable and accurate tools that will allow us to determine bespoke perioperative risk for each individual patient allowing these discussions and decisions to proceed smoothly. Current practice appears to be that many perioperative clinicians use risk stratification tools but not in a uniform or unified fashion. Different tools are used with different sensitivities and specificities and are not uniformly applied to all surgical populations. There does not exist a national recommendation or standard on which tools to use, how they should be applied, nor even that a risk stratification tool should be consistently used in the perioperative setting at all.

The committee agreed this was a fundamental aspect that required investigation of existing evidence around such tools with the intention to set a recommendation standard in this area of perioperative care.

1.3 PICO table

For full details see the review protocol in Appendix A:

Table 1: PICO characteristics of review question

Population	Adults 18 years and over undergoing surgery.
Risk tool	Validated risk stratification tools: <ul style="list-style-type: none">• P-POSSUM score (Physiological and Operative Severity Score for the enUmeration of Mortality and Morbidity)• SORT (Surgical Outcome Risk Tool)• NSQIP (National Surgical Quality Improvement Program) universal surgical risk calculator
Target condition	<ul style="list-style-type: none">• Mortality• Morbidity
Outcome measures	<ul style="list-style-type: none">• Sensitivity, specificity, predictive values• Area under the ROC curve (c-statistic)

	<ul style="list-style-type: none">• Predicted risk versus observed risk (calibration)
Study design	<ul style="list-style-type: none">• Prospective and retrospective cohort studies

1 **1.4 Clinical evidence**

2 **1.4.1 Included studies**

3 Fifty studies were included in the review;^{11, 14, 17, 18, 20, 22, 24, 26, 31, 32, 36, 38, 43, 45, 46, 49, 52, 54, 57, 58, 60, 64,}
4 65, 72, 78, 82, 87, 88, 95, 99, 110, 127, 129, 133, 140, 142, 146, 148, 152, 155, 156, 160, 161, 167, 169, 172, 173, 176, 177, 179 these are
5 summarised in Table 2 below. Evidence from these studies is summarised in the clinical
6 evidence summary below (Table 3).

7 See also the study selection flow chart in Appendix C: and study evidence tables in Appendix
8 D:.

9 **1.4.2 Excluded studies**

10 See the excluded studies list in appendix J.

11

1 **1.4.3 Summary of clinical studies included in the evidence review**

2 **Table 2: Summary of studies included in the evidence review**

Study	Population	Risk tool	Outcomes
Baker 2018 ¹¹	Patients scheduled for surgery under general anaesthetic (GA) with entry into the Peritoneum. N=298	ACS NSQIP risk calculator	Morbidity <ul style="list-style-type: none"> c-statistic
Bennett-Guerrero 2003 ¹⁴	Two cohorts of patients undergoing major, non-cardiac surgery over the same time interval. N=1056 (USA) N=1539(UK)	P-POSSUM	Mortality <ul style="list-style-type: none"> calibration
Blair 2018 ¹⁷	Retrospective review of a single institution, multi-surgeon, database of all patients undergoing partial nephrectomy (PN) for renal cell carcinoma. N=470	ACS NSQIP risk calculator	Mortality <ul style="list-style-type: none"> calibration Complications <ul style="list-style-type: none"> calibration
Bodea 2018 ¹⁸	Elective surgery patients undergoing elective Pancreaticoduodenectomy for periampullary malignant tumours. N=113	P-POSSUM	Mortality <ul style="list-style-type: none"> c-statistic calibration Morbidity <ul style="list-style-type: none"> c-statistic calibration
Bonaventura 2019 ²⁰	Patients undergoing cholecystectomy for acute cholecystitis N=271	Charlson Comorbidity index	Morbidity <ul style="list-style-type: none"> c-statistic
Boyd 2019 ²²	Women patients 18 years or older undergoing surgery for pelvic organ prolapse or incontinence by all routes.	ACS NSQIP risk calculator	Morbidity <ul style="list-style-type: none"> c-statistic

Study	Population	Risk tool	Outcomes
Bronheim 2018 ²⁴	N=731 Adult patients undergoing posterior lumbar decompression surgery N=52,066	ASA	Mortality <ul style="list-style-type: none"> c-statistic Morbidity <ul style="list-style-type: none"> c-statistic
Bulow 2019 ²⁶	Patients treated with hip arthroplasty for a femoral neck fracture. N=43,224	Charlson Comorbidity index	Mortality <ul style="list-style-type: none"> c-statistic
Cengiz 2014 ³¹	Consecutive patients undergoing colorectal cancer surgery between 2002 and 2012 in third-level healthcare centres. N=335	POSSUM P- POSSUM	Mortality <ul style="list-style-type: none"> c-statistic
Chun 2018 ³²	Patients who had undergone spinal surgery for various spine diseases at a single tertiary care centre. N=217	POSSUM E-PASS	Complications <ul style="list-style-type: none"> c-statistic
Cologne 2015 ³⁶	Consecutive laparoscopic colon resections performed on an elective basis from by two colorectal surgeons at a tertiary referral centre. N=116	ACS NSQIP risk calculator	Mortality <ul style="list-style-type: none"> calibration Any complication <ul style="list-style-type: none"> calibration
Dahlke 2014 ³⁸	Data obtained from the ACS NSQIP participant file 2011 release for patients undergoing a broad range of surgeries across all surgical specialities. N=238649	ACS NSQIP risk calculator	Morbidity <ul style="list-style-type: none"> c-statistic
Dutta 2011 ⁴³	Patients undergoing oesophago-gastric cancer resections.	POSSUM P- POSSUM	Mortality <ul style="list-style-type: none"> c-statistic

Study	Population	Risk tool	Outcomes
	N=121		<ul style="list-style-type: none"> calibration Any complication <ul style="list-style-type: none"> c-statistic calibration
Egberts 2011 ⁴⁵	The medical records of 143 patients with cutaneous melanoma who underwent a radical lymph node dissection (RLND). N=143	POSSUM	Mortality <ul style="list-style-type: none"> calibration Any complication <ul style="list-style-type: none"> calibration
Egberts 2011 ⁴⁶	The medical records of patients undergoing surgery for inflammatory bowel disease (IBD). N=191	POSSUM	Mortality <ul style="list-style-type: none"> calibration Any complication <ul style="list-style-type: none"> calibration
Filip 2014 ⁴⁹	Patients diagnosed with oesophageal cancer in whom surgery was performed. N=137	POSSUM P-POSSUM ASA classification Charlson Comorbidity index	Mortality <ul style="list-style-type: none"> calibration Morbidity <ul style="list-style-type: none"> c-statistic calibration
Fu 2019 ⁵²	Patients who underwent total shoulder arthroplasty were identified in the NSQIP. N=10,527	ASA classification Charlson Comorbidity index	Morbidity <ul style="list-style-type: none"> c-statistic
Golan 2018 ⁵⁴	Patients in prospectively maintained database who underwent open RC with either ileal conduit or orthotopic neobladder urinary diversion for bladder cancer. N=954	ACS NSQIP risk calculator	Mortality <ul style="list-style-type: none"> c-statistic calibration Morbidity <ul style="list-style-type: none"> c-statistic calibration
Hirose 2014 ⁵⁷	Consecutive patients who underwent spinal surgery.	POSSUM E-PASS	Mortality <ul style="list-style-type: none"> c-statistic

Study	Population	Risk tool	Outcomes
	N=601		Morbidity <ul style="list-style-type: none"> c-statistic
Hirose 2015 ⁵⁸	Retrospective review of consecutive patients who underwent spinal surgery. N=275	E-PASS	Mortality <ul style="list-style-type: none"> c-statistic
Hobson 2007 ⁶⁰	All patients undergoing surgery in the emergency theatre of the Leicester general hospital over a 4-month period. N=163	POSSUM P-POSSUM	Mortality <ul style="list-style-type: none"> c-statistic Morbidity <ul style="list-style-type: none"> c-statistic
Huisman 2014 ⁶⁴	Recruitment took place in 6 different countries at 11 medical centers between September 2008 and January 2012 and included cancer patients scheduled for elective surgery. N=263	ASA classification	Morbidity <ul style="list-style-type: none"> c-statistic
Igari 2013 ⁶⁵	Patients undergoing general surgical procedures at Ohta Nishinouchi General Hospital. N=593	POSSUM P-POSSUM	Mortality <ul style="list-style-type: none"> calibration Morbidity <ul style="list-style-type: none"> calibration
Katlic 2019 ⁷²	Geriatric surgical patients undergoing major elective surgery including cardiac, thoracic, vascular, orthopaedic, surgical oncology, general surgery, urologic and neurologic. N=1025	ASA Score Charleston Comorbidity index	Complication <ul style="list-style-type: none"> c-statistic
Kim 2018 ⁷⁸	Patients undergoing total shoulder arthroplasty or reverse total shoulder arthroplasty. N=90,491	Charleston Comorbidity index	Mortality <ul style="list-style-type: none"> c-statistic Morbidity <ul style="list-style-type: none"> c-statistic

Study	Population	Risk tool	Outcomes
Kong 2013 ⁸²	Major colorectal operations performed at Geelong hospital and Western Hospital from 2008-2010 N=863	POSSUM P-POSSUM	Mortality <ul style="list-style-type: none"> • calibration
Kwok 2011 ⁸⁷	Data from ACS NSQIP including very elderly patients aged 80+ undergoing emergency colon surgery. N=1730	ASA classification Surgical risk scale	Mortality <ul style="list-style-type: none"> • c-statistic • calibration
Lakomkin 2018 ⁸⁸	Patients undergoing spinal tumour resection. N=2,170	ASA score Charlston Comorbidity Index	Mortality <ul style="list-style-type: none"> • c-statistic
Lima 2019 ⁹⁵	Patients over 60 years old scheduled to undergo elective procedures under general, regional or combined anaesthesia for general, gynaecological, plastic, vascular, or orthopaedic surgeries. N=235	P-POSSUM	Mortality <ul style="list-style-type: none"> • c-statistic
Markovic 2018 ⁹⁹	Pilot study included patients who were being prepared for one of the major non-cardiac surgeries under general anaesthesia. N=78	ASA classification ACS NSQIP risk calculator SORT	Mortality <ul style="list-style-type: none"> • c-statistic
Ngulube 2019 ¹¹⁰	Patients aged 18 years and above undergoing a major general surgical procedure as defined by the British United Provident Association, with timing ranging from elective to emergency. N=181	POSSUM P-POSSUM	Mortality <ul style="list-style-type: none"> • c-statistic • calibration Morbidity <ul style="list-style-type: none"> • c-statistic • calibration
Reis 2019 ¹²⁸	Patients admitted to surgical ICU after open vascular surgery. N=833	POSSUM	Mortality <ul style="list-style-type: none"> • c-statistic • calibration

Study	Population	Risk tool	Outcomes
Rivard 2016 ¹²⁹	Patients who underwent laparotomy on the gynecologic oncology service at a single academic hospital. N=1094	ACS NSQIP risk calculator	Mortality <ul style="list-style-type: none"> c-statistic calibration Complications <ul style="list-style-type: none"> c-statistic calibration
Saafan 2019 ¹³³	Patients presenting to ER and diagnosed and operated for perforated duodenal ulcers. N=152	ASA classification	Morbidity <ul style="list-style-type: none"> c-statistic
Shaker 2019 ¹⁴⁰	Gynaecologic oncology patients aged >70 years undergoing laparotomy. N=200	ACS NSQIP risk calculator	Mortality <ul style="list-style-type: none"> c-statistic Morbidity <ul style="list-style-type: none"> c-statistic
Sharrock 2017 ¹⁴²	Consecutive hospital admissions of patients aged 70 or over admitted as an emergency for abdominal surgery. N=193	P-POSSUM ASA classification	Mortality <ul style="list-style-type: none"> c-statistic calibration Morbidity <ul style="list-style-type: none"> c-statistic
Simpson 2018 ¹⁴⁶	Patients over 80 years old undergoing emergency laparotomy N=103	P-POSSUM	Mortality <ul style="list-style-type: none"> c-statistic
Slim 2006 ¹⁴⁸	Patients undergoing open or laparoscopic surgery (electively or on emergent basis) for colorectal cancers or diverticular disease. N=1421	POSSUM P-POSSUM	Mortality <ul style="list-style-type: none"> c-statistic calibration
Suresh 2019 ¹⁵²	Patients who underwent panniculectomy. N=264	ACS NSQIP risk calculator	Morbidity <ul style="list-style-type: none"> c-statistic

Study	Population	Risk tool	Outcomes
Teeuwen 2011 ¹⁵⁵	Patients older than 15 years undergoing colorectal resection between January 2003 and January 2008 in the Radboud University Nijmegen Medical Centre. N=734	POSSUM P-POSSUM	Mortality <ul style="list-style-type: none"> • Calibration Morbidity <ul style="list-style-type: none"> • Calibration
Teoh 2017 ¹⁵⁶	All patients undergoing minimally invasive surgery on the gynecologic oncology service. N=876	ACS NSQIP risk calculator	Mortality <ul style="list-style-type: none"> • c-statistic • calibration Complications <ul style="list-style-type: none"> • c-statistic • calibration
Tominaga 2016 ¹⁶⁰	Patients over 70 years of age diagnosed with colorectal cancer and underwent curative colorectal resection from a single hospital. N=239	E-PASS	Mortality <ul style="list-style-type: none"> • calibration
Tran Ba Loc 2010 ¹⁶¹	Patients, at least 65 years old, undergoing major colorectal surgery. N=1186	POSSUM P-POSSUM Surgical risk score	Mortality <ul style="list-style-type: none"> • c-statistic • calibration Complications <ul style="list-style-type: none"> • c-statistic • calibration SRS <ul style="list-style-type: none"> • c-statistic • calibration
Vather 2006 ¹⁶⁷	Consecutive patients undergoing a major colorectal operation between January 2002 and October 2005 at the participating hospital. N=308	POSSUM P-POSSUM	Mortality <ul style="list-style-type: none"> • c-statistic
Wang 2014 ¹⁶⁹	Consecutive patients treated	POSSUM	Mortality

Study	Population	Risk tool	Outcomes
	surgically in the study centre following a diagnosis of hilar cholangiocarcinoma. N=100	P-POSSUM E-PASS	<ul style="list-style-type: none"> c-statistic calibration Complications <ul style="list-style-type: none"> c-statistic calibration E-PASS <ul style="list-style-type: none"> c-statistic calibration
Wang 2017 ¹⁷²	Geriatric patients (age>60 years) with isolated spinal stenosis who underwent lumbar surgery. N=242	ACS-NSQIP risk calculator	Mortality <ul style="list-style-type: none"> c-statistic
Wani 2005 ¹⁷³	Patients of diagnosed calcular disease of biliary tract over an 18 month period. N=500	POSSUM	Mortality <ul style="list-style-type: none"> prognostic accuracy correlation Morbidity <ul style="list-style-type: none"> prognostic accuracy correlation
Wolters 2006 ¹⁷⁶	Patients received an aorto-bi-iliac or an aorto-bifemoral graft due to arterial occlusive disease. N=107	POSSUM ASA classification	Mortality <ul style="list-style-type: none"> c-statistic Morbidity <ul style="list-style-type: none"> c-statistic
Yap 2018 ¹⁷⁷	Patients aged 19 years and older admitted for preoperative evaluation and cardiopulmonary risk stratification before non-cardiac surgery. N=424	ACS NSQIP risk calculator	Mortality <ul style="list-style-type: none"> c-statistic
Zattoni 2019 ¹⁷⁹	Patients over 70 years old undergoing emergency abdominal surgery under general anaesthesia.	ASA classification Charleston Comorbidity index	Mortality <ul style="list-style-type: none"> c-statistic

Study	Population	Risk tool	Outcomes
	N=110		

See Appendix D:for full evidence tables.

1.4.4 Quality assessment of clinical studies included in the evidence review

1.1 Discrimination

Table 3: Clinical evidence profile

Risk tool	No of studies	n	Risk of bias	Inconsistency	Indirectness	Imprecision	Concordance statistic (c-stat: median, range)	Quality
Mortality								
POSSUM	9	2537	Serious risk of bias	Serious inconsistency	No serious indirectness	Serious imprecision	82% (47-95)	Very low
P-POSSUM	13	4848	Serious risk of bias	Serious inconsistency	No serious indirectness	Serious imprecision	81% (56-94)	Very low
NSQIP	8	241905	No serious risk of bias	Serious inconsistency	No serious indirectness	Serious imprecision	83% (62-97)	Low
E-PASS	1	100	Serious risk of bias	No serious inconsistency	No serious indirectness	Serious imprecision	84%	Low
ASA	5	54174	Serious risk of bias	Serious inconsistency	No serious indirectness	Serious imprecision	67% (59-80)	Very low
Charlson	4	136995	Serious risk of bias	Serious inconsistency	No serious indirectness	Serious imprecision	77% (58-86)	Very low
SORT	1	78	Serious risk of bias	No serious inconsistency	No serious indirectness	Serious imprecision	80%	Low
SRS	2	2916	Serious risk of bias	Serious inconsistency	No serious indirectness	Serious imprecision	72%	Very low

Risk tool	No of studies	n	Risk of bias	Inconsistency	Indirectness	Imprecision	Concordance statistic (c-stat: median, range) (66-78)	Quality
Morbidity (composite outcome)								
POSSUM	8	2556	Serious risk of bias	Serious inconsistency	No serious indirectness	Serious imprecision	73.5% (56-84)	Very low
P-POSSUM	1	113	Serious risk of bias	No serious inconsistency	No serious indirectness	Cannot be assessed	61%	Low
NSQIP	8	4819	Serious risk of bias	Serious inconsistency	No serious indirectness	Serious imprecision	62.5% (55-88)	Very low
E-PASS	3	1093	Serious risk of bias	Serious inconsistency	No serious indirectness	Serious imprecision	67% (59-68)	Very low
ASA	6	64033	Serious risk of bias	Serious inconsistency	No serious indirectness	Serious imprecision	65% (52-77)	Very low
Charlson	4	103357	Serious risk of bias	Serious inconsistency	No serious indirectness	Serious imprecision	64% (56-69)	Very low

GRADE was conducted with emphasis on c-statistic as this was the primary measures agreed for decision making

a) Risk of bias was assessed using the PROBAST checklist. Downgraded by 1 increment if the majority of the evidence was at high risk of bias, and downgraded by 2 increments if the majority of the evidence was at very high risk of bias

b) Inconsistency was assessed by visual inspection of a plotted summary of c-statistics and for overlap of confidence intervals where reported.

c) The judgement of precision was based on visual inspection of the confidence region of the c-statistic, where variation in confidence intervals was reported.

1.2 Calibration

Risk tool	No of studies	n	Risk of bias	Inconsistency	Indirectness	Imprecision	Observed/Expected ratio (median, range)	Quality
-----------	---------------	---	--------------	---------------	--------------	-------------	---	---------

Mortality									
POSSUM	7	4048	Serious risk of bias	Serious inconsistency	No serious indirectness	not estimable	0.86 (0-1.11)	Very low	
P-POSSUM	8	6853	Serious risk of bias	Serious inconsistency	No serious indirectness	not estimable	1.03 (0.68-15.87)	Very low	
NSQIP	4	2634	Serious risk of bias	Serious inconsistency	No serious indirectness	not estimable	1.23 (0.64-1.28)	Very low	
E-PASS	1	100	Serious risk of bias	No serious inconsistency	No serious indirectness	not estimable	1	Low	
ASA	1	1186	Serious risk of bias	No serious inconsistency	No serious indirectness	not estimable	1.08	Low	
Morbidity (composite outcome)									
POSSUM	8	1915	Serious risk of bias	Serious inconsistency	No serious indirectness	not estimable	1.10 (0.8-1.44)	Very low	
NSQIP	5	3510	Serious risk of bias	Serious inconsistency	No serious indirectness	not estimable	1.06 (0.76-1.84)	Very low	

a) Risk of bias was assessed using the PROBAST checklist. Downgraded by 1 increment if the majority of the evidence was at high risk of bias, and downgraded by 2 increments if the majority of the evidence was at very high risk of bias

b) Inconsistency was assessed by visual inspection of a plotted summary where reported.

c) The judgement of precision was not possible in the absence of the confidence region of the O/E ratio, summary ratios were downgraded due to this limitation.

1 **1.3 Economic evidence**

2 **1.3.1 Included studies**

3 No health economic studies were included.

4 **1.3.2 Excluded studies**

5 No relevant health economic studies were excluded due to assessment of limited
6 applicability or methodological limitations.

7 See also the health economic study selection flow chart in Appendix H:
8

9 **1.4 Evidence statements**

10 **1.4.1 Clinical evidence statements**

11

12 **Risk tools mortality concordance**

13 Nine studies reported an accuracy of 47-95% with POSSUM predicting mortality, with a
14 median c-statistic of 82% (n=2537, Very low quality evidence)

15 Thirteen studies reported an accuracy of 56-94% with P-POSSUM predicting mortality, with a
16 median c-statistic of 81% (n=4848, Very low quality evidence)

17 Eight studies reported an accuracy of 62-97% with NSQIP predicting mortality, with a median
18 c-statistic of 83% (n=241905, Low quality evidence)

19 One study reported an accuracy of 84% with E-PASS for predicting mortality (n=100, Low
20 quality evidence)

21 Five studies reported an accuracy of 59-80% with ASA for predicting mortality, with a median
22 c-statistic of 67% (n=54174, Very low quality evidence)

23 Four studies reported an accuracy of 58-86% with Charlson Comorbidity Index for predicting
24 mortality, with a median c-statistic of 77% (n=136995, Very low quality evidence)

25 One study reported an accuracy of 80% with SORT for predicting mortality (n=78, Very low
26 quality evidence)

27 Two studies reported an accuracy of 66-78% with SRS for predicting mortality of, with a
28 median c-statistic of 72% (n=2916, Very low quality evidence)

29 **Risk tools morbidity concordance**

30 Eight studies reported an accuracy of 56-84% with POSSUM for predicting morbidity, with a
31 median c-statistic of 73.5% (n=2556, Very low quality evidence)

32 One study reported an accuracy of 61% with P-POSSUM for predicting morbidity (n=113,
33 Low quality evidence)

1 Eight studies reported an accuracy of 55-88% with NSQIP for predicting morbidity, with a
2 median c-statistic of 62.5% (n=4819, Very low quality evidence)

3 Three studies reported an accuracy of 59-68% with E-PASS for predicting morbidity, with a
4 median c-statistic of 67% (n=1093, Very low quality evidence)

5 Six studies reported an accuracy of 52-77% with ASA for predicting morbidity, with a median
6 c-statistic of 65% (n=64033, Very low quality evidence)

7 Four studies reported an accuracy of 56-69% with Charlson Comorbidity Index for predicting
8 morbidity, with a median c-statistic of 64% (n=103357, Very low quality evidence)

9 **Risk tools mortality calibration**

10 Seven studies reported a predictive accuracy of POSSUM for mortality with median O/E ratio
11 of 0.86 (n=4048, Very low quality evidence)

12 Eight studies reported a predictive accuracy of P-POSSUM for mortality with median O/E
13 ratio of 1.03 (n=6853, Very low quality evidence)

14 Four studies reported a predictive accuracy of NSQIP for mortality with median O/E ratio of
15 1.23 (n=2634, Very low quality evidence)

16 One study reported a predictive accuracy of E-PASS for mortality with median O/E ratio of 1
17 (n=100, Low quality evidence)

18 One study reported a predictive accuracy of ASA for mortality with median O/E ratio of 1.08
19 (n=1186, Low quality evidence)

20 **Risk tools morbidity calibration**

21 Eight studies reported a predictive accuracy of POSSUM for morbidity with median O/E ratio
22 of 1.10 (n=1915, Very low quality evidence)

23 Five studies reported a predictive accuracy of NSQIP for morbidity with median O/E ratio of
24 1.06 (n=3510, Very low quality evidence)

25 **1.4.2 Health economic evidence statements**

- 26
- No relevant economic evaluations were identified.

27 **1.5 The committee's discussion of the evidence**

28 Please see recommendation 1.3.1 in the guideline.

29 **1.5.1 Interpreting the evidence**

30 **1.5.1.1 The outcomes that matter most**

31 The committee highlighted that a key goal of preoperative risk assessment is to identify and
32 stratify those at increased risk of mortality and morbidity. As such, the main outcomes
33 included in this evidence review was the predictive accuracy of risk tools, as measured by
34 sensitivity, specificity, predictive values, c-statistic data, and predicted risk versus observed
35 risk (calibration data). The risk prediction tools do not predict or report specific morbidities,
36 rather morbidity rate as a composite outcome.

1 1.5.1.2 The quality of the evidence

2 The quality of evidence varied from low to very low. Studies were downgraded for risk of bias
3 inconsistency and imprecision. Risk of bias was generally serious or very serious due to
4 unclear methodology in terms of blinding of risk tool and outcome data. A large proportion of
5 the available concordance data had no reported variance data (such as 95% CI). As such,
6 many of the outcomes were downgraded for a subsequent risk of inconsistency and possible
7 imprecision. Due to the method of reporting and analysis of the calibration data with
8 observed/expected ratios, it was also not possible to ascertain variance data. These
9 outcomes were subsequently downgraded due to the uncertainty around outcome precision.

10 1.5.1.3 Benefits and harms

11 The committee agreed that an accurate risk prediction tool can have benefits in directing
12 discussions between clinicians about the appropriateness of the planned surgery and
13 whether it should proceed as planned, should be abbreviated, or whether alternative non-
14 surgical options should be considered. Additionally, the committee suggested that being able
15 to quantify morbidity risk allows planning for post-operative destination, discussions about
16 recovery or convalescence and the anticipated clinical course. Effective risk tools can
17 subsequently have a benefit on patient experience and postoperative quality of life. One
18 possible disadvantage (harm) of using risk tools is underestimating mortality or morbidity risk,
19 which may lead to insufficient attention to preventable risks, insufficient monitoring or surgery
20 being performed when alternative options may be more appropriate. Another potential harm
21 is over-estimating operative risk, which can lead to unnecessary over-vigilance and possibly
22 reluctance on the part of the patient (and maybe clinician) to commence surgery. Thus using
23 accurate risk prediction was seen by the GC as vital to maximise benefits and minimise
24 harms.

25 The committee discussed the results and utility of the risk tools reviewed and agreed that a
26 concordance (c-statistic) of >80% represents a good level of predictive accuracy, with results
27 of >90% demonstrating an excellent test. The committee added that a test yielding <70%
28 accuracy would be considered poor. The committee also noted that calibration data showing
29 a test observed/expected ratio of 0.9-1.1 would be considered a fair level of accuracy, adding
30 that it would be better to overestimate the event rate than to underestimate morbidity or
31 mortality.

32 The committee agreed that tools such as P-POSSUM, NSQIP and E-PASS showed a fair
33 level of accuracy for mortality with median c-statistic of ~85%. The committee agreed that
34 ASA used as a risk tool showed a lower level of predictive accuracy with a median c-statistic
35 of 67%. The committee highlighted though that there was notable inconsistency in the
36 accuracy of tools in the prediction of mortality and morbidity, with most tools ranging from
37 ~60% to ~90% accuracy for predicting mortality.

38 The committee noted that all tools were less accurate in predicting morbidity showing a
39 predictive accuracy of ~60-70%, but agreed that this was expectedly lower than the accuracy
40 in predicting mortality and could still be informative for a healthcare professional and patient
41 scheduled to undergo surgery.

42 The committee agreed that the evidence on risk tool calibration showed significant
43 inconsistency between studies, limiting the utility of these results. As such, the committee
44 weighted the majority of their discussions on the benefits and harms of risk tools on the on
45 risk tool concordance evidence.

46 The committee considered that the noted variation in results could be due to the
47 heterogeneity in study populations, with included studies providing risk prediction for a range
48 of varied types of surgery. This was a notable concern to the committee, and while they felt
49 confident that risk tools can have a benefit in the preoperative setting in predicting morbidity
50 and mortality, they were not able to determine which risk tool should be used.

1

2 **1.5.2 Cost effectiveness and resource use**

3 No economic evaluations were identified for this question.

4 All of the different risk tools are freely available, and therefore do not have a cost associated
5 with using them. Although they require some time to complete, the committee stated it would
6 usually take less than 5 minutes during a preoperative assessment. The different types of
7 risk tools do require different information, for example, some require information on the
8 adult's haemoglobin levels, however, all of these tests are already carried out as part of
9 preoperative assessment.

10 The committee highlighted that if a risk tool is not accurate at estimating mortality and
11 morbidity, then the wrong people may be given targeted interventions before surgery
12 (incorrectly identified as high risk), or the wrong people may not be receiving interventions
13 they should have (incorrectly identified as low risk). These targeted interventions vary, but
14 could require being referred to a Consultant Anaesthetist, Cardiologist or Care of the Elderly
15 specialist, or being admitted to a specialist area after surgery. Therefore, the committee
16 highlighted the importance of accurately identifying who is at risk, as these downstream
17 interventions can have a high cost associated with them, or quality of life could be lost from
18 people not receiving interventions they require.

19 A recommendation was made to use a validated risk tool as part of a preoperative
20 assessment. The committee agreed that the most commonly used tools such as P-
21 POSSUM, NSQIP and E-PASS showed similar level of accuracy in predicting mortality and
22 therefore will not lead to differences in the downstream interventions that are implemented in
23 relation to patient risk. As current practice already involves using a validated risk tool as part
24 of a preoperative assessment, the recommendation will not have a substantial resource
25 impact.

26 **1.5.3 Other factors the committee took into account**

27 The committee noted that a validated risk stratification tool can also help to frame
28 discussions about risk with the person having surgery as well as the wider perioperative
29 team on the impact of surgical management on overall outcome. They agreed that the risk of
30 postoperative morbidity is an important concern for people when they are making decisions
31 about surgery. The committee noted that the recommendation was applicable to people
32 undergoing dental surgery.

33 The committee considered that the findings of risk tools could have an influence over
34 allocation of resources, although this would not be solely based on the risk tool findings, but
35 alongside clinical assessment and judgement.

References

1. Ahle SL, Healy JM, Pei KY. Prediction of postoperative surgical risk: a needs assessment for a medical student curriculum. *Journal of Surgical Education*. 2019; 76(1):89-92
2. Al-Homoud S, Purkayastha S, Aziz O, Smith JJ, Thompson MD, Darzi AW et al. Evaluating operative risk in colorectal cancer surgery: ASA and POSSUM-based predictive models. *Surgical Oncology*. 2004; 13(2-3):83-92
3. Ali R, Schwalb JM, Nerenz DR, Antoine HJ, Rubinfeld I. Use of the modified frailty index to predict 30-day morbidity and mortality from spine surgery. *Journal of Neurosurgery Spine*. 2016; 25(4):537-541
4. Amrock LG, Neuman MD, Lin HM, Deiner S. Can routine preoperative data predict adverse outcomes in the elderly? Development and validation of a simple risk model incorporating a chart-derived frailty score. *Journal of the American College of Surgeons*. 2014; 219(4):684-694
5. Anderson JE, Lassiter R, Bickler SW, Talamini MA, Chang DC. Brief tool to measure risk-adjusted surgical outcomes in resource-limited hospitals. *Archives of Surgery*. 2012; 147(9):798-803
6. Anonymous. Correction: Preoperative risk score for the prediction of mortality after repair of ruptured abdominal aortic aneurysms (*Journal of Vascular Surgery* (2018) 68(4) (991-997), (S0741521418302751)(10.1016/j.jvs.2017.12.075)). *Journal of Vascular Surgery*. 2018; 68(5):1623
7. Anonymous. Development of machine learning algorithms for prediction of discharge disposition after elective inpatient surgery for lumbar degenerative disc disorders. *Neurosurgical Focus*. 2018; 45(5):E6
8. Arakkal D, Prabhu P, Evans M, Hoddnett D, Tailor A, Butler-Manuel S et al. Correlation between the ACS and p Possum Calculator to improve patient understanding of the risk of postoperative morbidity and mortality. *BJOG: An International Journal of Obstetrics and Gynaecology*. 2018; 125(Suppl 1):157
9. Armstrong BN, Renson A, Zhao LC, Bjurlin MA. Development of novel prognostic models for predicting complications of urethroplasty. *World Journal of Urology*. 2019; 37(3):553-559
10. Arshad W, Longbotham D, Kaur G. Is P POSSUM better than anaesthetic/surgical assessment in risk stratification of the major surgical patient? *Colorectal Disease*. 2014; 2):123
11. Baker S, Waldrop MG, Swords J, Wang T, Heslin M, Contreras C et al. Timed stair-climbing as a surrogate marker for sarcopenia measurements in predicting surgical outcomes. *Journal of Gastrointestinal Surgery*. 2018; Epublication
12. Bartlett EK, Roses RE, Kelz RR, Drebin JA, Fraker DL, Karakousis GC. Morbidity and mortality after total gastrectomy for gastric malignancy using the American College of Surgeons National Surgical Quality Improvement Program database. *Surgery*. 2014; 156(2):298-304
13. Bekelis K, Desai A, Bakhoun SF, Missios S. A predictive model of complications after spine surgery: the National Surgical Quality Improvement Program (NSQIP) 2005-2010. *Spine Journal*. 2014; 14(7):1247-55

- 1 14. Bennett-Guerrero E, Hyam JA, Shaefi S, Prytherch DR, Sutton GL, Weaver PC et al.
2 Comparison of P-POSSUM risk-adjusted mortality rates after surgery between
3 patients in the USA and the UK. *British Journal of Surgery*. 2003; 90(12):1593-8
- 4 15. Bihorac A, Ozrazgat-Baslanti T, Ebadi A, Motaei A, Madkour M, Pardalos PM et al.
5 MySurgeryRisk: Development and validation of a machine-learning risk algorithm for
6 major complications and death after surgery. *Annals of Surgery*. 2019; 269(4):652-
7 662
- 8 16. Blair B, Lehman E, Jafri S, Raman J. Actual versus estimated clinical outcomes using
9 the ACS surgical risk calculator in patients undergoing partial nephrectomy for renal
10 cell carcinoma. *Journal of Urology*. 2016; 195(4 Suppl):e943
- 11 17. Blair BM, Lehman EB, Jafri SM, Kaag MG, Raman JD. Predicted versus observed
12 30-day perioperative outcomes using the ACS NSQIP surgical risk calculator in
13 patients undergoing partial nephrectomy for renal cell carcinoma. *International*
14 *Urology and Nephrology*. 2018; 50(7):1249-1256
- 15 18. Bodea R, Hajjar NA, Bartos A, Zaharie F, Graur F, Iancu C. Evaluation of P-POSSUM
16 risk scoring system in prediction of morbidity and mortality after
17 pancreaticoduodenectomy. *Chirurgia*. 2018; 113(3):399-404
- 18 19. Bollschweiler E, Lubke T, Monig SP, Holscher AH. Evaluation of POSSUM scoring
19 system in patients with gastric cancer undergoing D2-gastrectomy. *BMC Surgery*.
20 2005; 5:8
- 21 20. Bonaventura A, Leale I, Carbone F, Liberale L, Dallegri F, Montecucco F et al. Pre-
22 surgery age-adjusted Charlson Comorbidity Index is associated with worse outcomes
23 in acute cholecystitis. *Digestive and Liver Disease*. 2019; 51(6):858-863
- 24 21. Borja-Cacho D, Parsons HM, Habermann EB, Rothenberger DA, Henderson WG, Al-
25 Refaie WB. Assessment of ACS NSQIP's predictive ability for adverse events after
26 major cancer surgery. *Annals of Surgical Oncology*. 2010; 17(9):2274-2282
- 27 22. Boyd SS, O'Sullivan DM, Lasala C. Evaluating Postoperative Morbidity in Patients
28 Undergoing Pelvic Reconstructive Surgery Using the American College of Surgeons
29 national surgical quality improvement program surgical risk calculator. *Female Pelvic*
30 *Medicine & Reconstructive Surgery*. 2019; Epublication
- 31 23. Brennan M, Puri S, Ozrazgat-Baslanti T, Feng Z, Ruppert M, Hashemighouchani H et
32 al. Comparing clinical judgment with the MySurgeryRisk algorithm for preoperative
33 risk assessment: A pilot usability study. *Surgery*. 2019; 165(5):1035-1045
- 34 24. Bronheim RS, Oermann EK, Bronheim DS, Caridi JM. Revised Cardiac Risk Index
35 versus ASA Status as a predictor for noncardiac events after posterior lumbar
36 decompression. *World Neurosurgery*. 2018; 120:e1175-e1184
- 37 25. Bryce GJ, Payne CJ, Gibson SC, Kingsmore DB, Byrne DS, Delles C. Risk
38 stratification scores in elective open abdominal aortic aneurysm repair: are they
39 suitable for preoperative decision making? *European Journal of Vascular and*
40 *Endovascular Surgery*. 2012; 44(1):55-61
- 41 26. Bulow E, Cnudde P, Rogmark C, Rolfson O, Nemes S. Low predictive power of
42 comorbidity indices identified for mortality after acute arthroplasty surgery undertaken
43 for femoral neck fracture. *Bone & Joint Journal*. 2019; 101-B(1):104-112
- 44 27. Burg ML, Clifford TG, Bazargani ST, Lin-Brandt M, Miranda G, Cai J et al. Frailty as
45 a predictor of complications after radical cystectomy: A prospective study of various
46 preoperative assessments. *Urologic Oncology*. 2019; 37(1):40-47

- 1 28. Burgess JR, Smith B, Britt R, Weireter L, Polk T. Predicting postoperative
2 complications for acute care surgery patients using the ACS NSQIP surgical risk
3 calculator. *American Surgeon*. 2017; 83(7):733-738
- 4 29. Butterfield R, Stedman W, Herod R, Aneman A. Does adding ICU data to the
5 POSSUM score improve the prediction of outcomes following surgery for upper
6 gastrointestinal malignancies? *Anaesthesia and Intensive Care*. 2015; 43(4):490-6
- 7 30. Cao A, Khayat S, Cash E, Nickel C, Gettelfinger J, Tennant P et al. ACS NSQIP risk
8 calculator reliability in head and neck oncology: The effect of prior chemoradiation on
9 NSQIP risk estimates following laryngectomy. *American Journal of Otolaryngology*.
10 2018; 39(2):192-196
- 11 31. Cengiz F, Kamer E, Zengel B, Uyar B, Tavusbay C, Unalp HR. Comparison of
12 different scoring systems in patients undergoing colorectal cancer surgery for
13 predicting mortality and morbidity. *Indian Journal of Cancer*. 2014; 51(4):543-8
- 14 32. Chun DH, Kim DY, Choi SK, Shin DA, Ha Y, Kim KN et al. Feasibility of a modified E-
15 PASS and POSSUM system for postoperative risk assessment in patients with spinal
16 disease. *World Neurosurgery*. 2018; 112:e95-e102
- 17 33. Chung PJ, Lee JS, Tam S, Schwartzman A, Bernstein MO, Dresner L et al. Predicting
18 30-day postoperative mortality for emergent anterior abdominal wall hernia repairs
19 using the American College of Surgeons National Surgical Quality Improvement
20 Program database. *Hernia*. 2017; 21(3):323-333
- 21 34. Cohen ME, Bilimoria KY, Ko CY, Hall BL. Development of an American College of
22 Surgeons National Surgery Quality Improvement Program: morbidity and mortality
23 risk calculator for colorectal surgery. *Journal of the American College of Surgeons*.
24 2009; 208(6):1009-1016
- 25 35. Collard MK, Moszkowicz D, Clause-Verdreau AC, Beauchet A, Cudennec T,
26 Vychnevskaja K et al. Postoperative morbidity and mortality for malignant colon
27 obstruction: the American College of Surgeon calculator reliability. *Journal of Surgical
28 Research*. 2018; 226:112-121
- 29 36. Cologne KG, Keller DS, Liwanag L, Devaraj B, Senagore AJ. Use of the American
30 College of Surgeons NSQIP surgical risk calculator for laparoscopic colectomy: how
31 good is it and how can we improve it? *Journal of the American College of Surgeons*.
32 2015; 220(3):281-286
- 33 37. Cote DJ, Dasenbrock HH, Gormley WB, Smith TR, Dunn IF. Adverse events after
34 microvascular decompression: A national surgical quality improvement program
35 analysis. *World Neurosurgery*. 2019; 128:e884-894
- 36 38. Dahlke AR, Merkow RP, Chung JW, Kinnier CV, Cohen ME, Sohn MW et al.
37 Comparison of postoperative complication risk prediction approaches based on
38 factors known preoperatively to surgeons versus patients. *Surgery*. 2014; 156(1):39-
39 45
- 40 39. de Castro SM, Houwert JT, Lagarde SM, Reitsma JB, Busch OR, van Gulik TM et al.
41 Evaluation of POSSUM for patients undergoing pancreatoduodenectomy. *World
42 Journal of Surgery*. 2009; 33(7):1481-7
- 43 40. Debinska I, Smolinska K, Osiniak J, Paluszkiwicz P. The possum scoring system
44 and complete blood count in the prediction of complications after pancreato-duodenal
45 area resections. *Polski Przegląd Chirurgiczny*. 2011; 83(1):10-8
- 46 41. DeLuzio MR, Keshava HB, Wang Z, Boffa DJ, Detterbeck FC, Kim AW. A model for
47 predicting prolonged length of stay in patients undergoing anatomical lung resection:

- 1 a National Surgical Quality Improvement Program (NSQIP) database study.
2 Interactive Cardiovascular and Thoracic Surgery. 2016; 23(2):208-15
- 3 42. Dunn CP, Emeasoba EU, Holtzman AJ, Hung M, Kaminetsky J, Alani O et al.
4 Comparing the predictive power of preoperative risk assessment tools to best predict
5 major adverse cardiac events in kidney transplant patients. Surgery Research &
6 Practice Print. 2019; 2019:9080856
- 7 43. Dutta S, Al-Mrabt NM, Fullarton GM, Horgan PG, McMillan DC. A comparison of
8 POSSUM and GPS models in the prediction of post-operative outcome in patients
9 undergoing oesophago-gastric cancer resection. Annals of Surgical Oncology. 2011;
10 18(10):2808-17
- 11 44. Easterlin MC, Chang DC, Wilson SE. A practical index to predict 30-day mortality
12 after major amputation. Annals of Vascular Surgery. 2013; 27(7):909-17
- 13 45. Egberts F, Hartje C, Schafmayer C, Kaehler KC, von Schonfels W, Hauschild A et al.
14 Risk evaluation in cutaneous melanoma patients undergoing lymph node dissection:
15 impact of POSSUM. Annals of the Royal College of Surgeons of England. 2011;
16 93(7):514-22
- 17 46. Egberts JH, Stroeh A, Alkatout I, Goumas FA, Brand PA, Schafmayer C et al.
18 Preoperative risk evaluation of postoperative morbidity in IBD patients--impact of the
19 POSSUM score. International Journal of Colorectal Disease. 2011; 26(6):783-92
- 20 47. Engin A, Engin AB, Kurukahvecioglu O, Sepici-Dincel A. Perioperative mortality
21 prediction using possum in patients with gastrointestinal tumors: Do immunological
22 variables affect individual predictive mortality risk? Pteridines. 2018; 29(1):114-123
- 23 48. Farhat JS, Falvo AJ, Horst HM, Swartz A, Velanovich V, Patton JH et al. Are the frail
24 destined to fail?: Frailty index as a predictor of surgical morbidity and mortality in the
25 elderly. Journal of Trauma and Acute Care Surgery. 2012; 72(6):1526-1531
- 26 49. Filip B, Hutanu I, Radu I, Anitei MG, Scripcariu V. Assessment of different prognostic
27 scores for early postoperative outcomes after esophagectomy. Chirurgia. 2014;
28 109(4):480-5
- 29 50. Ford J, Coughlin KR, Van Dorp D, Berri RN. Validation of the American College of
30 Surgeons (ACS) National Surgical Quality Improvement Program (NSQIP) risk
31 calculator to estimate serious complications in patients undergoing major
32 gastrointestinal oncologic resection. Journal of the American College of Surgeons.
33 2015; 221(4):e135-e136
- 34 51. Fryer S, McCann J. ICNARC score versus P-POSSUM score for predicting mortality
35 in emergency laparotomies. Journal of the Intensive Care Society. 2018; 19 (2 Suppl
36 1):129-130
- 37 52. Fu MC, Ondeck NT, Nwachukwu BU, Garcia GH, Gulotta LV, Verma NN et al. What
38 associations exist between comorbidity indices and postoperative adverse events
39 after total shoulder arthroplasty? Clinical Orthopaedics and Related Research. 2019;
40 477(4):881-890
- 41 53. Gentry RD, Dineen HA, Hahn JC. An overview of risk stratification in the elderly
42 orthopaedic population. Current Geriatrics Reports. 2018; 7(2):92-102
- 43 54. Golan S, Adamsky MA, Johnson SC, Barashi NS, Smith ZL, Rodriguez MV et al.
44 National Surgical Quality Improvement Program surgical risk calculator poorly
45 predicts complications in patients undergoing radical cystectomy with urinary
46 diversion. Urologic Oncology. 2018; 36(2):77.e1-77.e7

- 1 55. Hacoen Solovitz A, Ivry S, Ronen O. Man against the machine - Differences in
2 surgical risk evaluation. A cohort prospective study. *International Journal of Surgery*.
3 2018; 60:252-256
- 4 56. Harris AHS, Kuo AC, Weng Y, Trickey AW, Bowe T, Giori NJ. Can machine learning
5 methods produce accurate and easy-to-use prediction models of 30-day
6 complications and mortality after knee or hip arthroplasty? *Clinical Orthopaedics and
7 Related Research*. 2019; 477(2):452-460
- 8 57. Hirose J, Taniwaki T, Fujimoto T, Okada T, Nakamura T, Okamoto N et al. Predictive
9 value of E-PASS and POSSUM systems for postoperative risk assessment of spinal
10 surgery. *Journal of Neurosurgery Spine*. 2014; 20(1):75-82
- 11 58. Hirose J, Taniwaki T, Fujimoto T, Okada T, Nakamura T, Usuku K et al. Validity of e-
12 pass system for postoperative morbidity of spinal surgery. *Journal of Spinal Disorders
13 & Techniques*. 2015; 28(10):E595-E600
- 14 59. Hirpara DH, Kidane B, Rogalla P, Cypel M, de Perrot M, Keshavjee S et al. Frailty
15 assessment prior to thoracic surgery for lung or esophageal cancer: a feasibility
16 study. *Supportive Care in Cancer*. 2019; 27(4):1535-1540
- 17 60. Hobson SA, Sutton CD, Garcea G, Thomas WM. Prospective comparison of
18 POSSUM and P-POSSUM with clinical assessment of mortality following emergency
19 surgery. *Acta Anaesthesiologica Scandinavica*. 2007; 51(1):94-100
- 20 61. Hoeks SE, Scholte op Reimer WJ, van Gestel YR, Smolderen KG, Verhagen H, van
21 Domburg RT et al. Preoperative cardiac risk index predicts long-term mortality and
22 health status. *American Journal of Medicine*. 2009; 122(6):559-65
- 23 62. Hoftman N, Prunean A, Dhillon A, Danovitch GM, Lee MS, Gritsch HA. Revised
24 Cardiac Risk Index (RCRI) is a useful tool for evaluation of perioperative cardiac
25 morbidity in kidney transplant recipients. *Transplantation*. 2013; 96(7):639-43
- 26 63. Huang J, Yuan Y, Wang Y, Chen Y, Kong W, Xue W et al. Preoperative prognostic
27 nutritional index is a significant predictor of survival in patients with localized upper
28 tract urothelial carcinoma after radical nephroureterectomy. *Urologic Oncology*. 2017;
29 35(12):671.e1-671.e9
- 30 64. Huisman MG, van Leeuwen BL, Ugolini G, Montroni I, Spiliotis J, Stabilini C et al.
31 "Timed Up & Go": a screening tool for predicting 30-day morbidity in onco-geriatric
32 surgical patients? A multicenter cohort study. *PloS One*. 2014; 9(1):e86863
- 33 65. Igari K, Ochiai T, Yamazaki S. POSSUM and P-POSSUM for risk assessment in
34 general surgery in the elderly. *Hepato-Gastroenterology*. 2013; 60(126):1320-7
- 35 66. Inoue K, Ueno T, Akishige N, Soeta T, Tsuchiya T, Nakayama S et al. Short-term
36 outcomes of laparoscopic colorectal cancer surgery in elderly patients. -Is it really
37 safe in elderly patients with severe comorbidities? *International Journal of Surgery
38 Open*. 2019; 17:27-32
- 39 67. Jean RA, DeLuzio MR, Kraev AI, Wang G, Boffa DJ, Detterbeck FC et al. Analyzing
40 risk factors for morbidity and mortality after lung resection for lung cancer using the
41 NSQIP database. *Journal of the American College of Surgeons*. 2016; 222(6):992-
42 1000
- 43 68. Jensen AM, Crandall ML, Tepas JJ, 3rd, Ra JH. ACS NSQIP Surgical Risk
44 Calculator: Pilot analysis on feasibility in an academic safety net hospital. *Journal of
45 Surgical Research*. 2019; 236:124-128

- 1 69. Kalender M, Adademir T, Tasar M, Ecevit AN, Karaca OG, Salihi S et al. Validation of
2 EuroSCORE II risk model for coronary artery bypass surgery in high-risk patients.
3 *Kardiochirurgia I Torakochirurgia Polska*. 2014; 11(3):252-6
- 4 70. Kapma M, Kahmann O, van Stijn I, Zeebregts CJ, Vahl A. Evaluation of risk
5 prediction models, V-POSSUM and GAS, in patients with acute abdominal aortic
6 rupture treated with EVAR or an open procedure. *Journal of Cardiovascular Surgery*.
7 2017; 58(3):439-445
- 8 71. Karabulut H, Toraman F, Alhan C, Camur G, Evrenkaya S, Dagdelen S et al.
9 EuroSCORE overestimates the cardiac operative risk. *Cardiovascular Surgery*. 2003;
10 11(4):295-8
- 11 72. Katlic MR, Coleman J, Khan K, Wozniak SE, Abraham JH. Sinai abbreviated geriatric
12 evaluation: Development and validation of a practical test. *Annals of Surgery*. 2019;
13 269(1):177-183
- 14 73. Kavanagh JW, Blyth C. An audit of 30-day fractured neck of femur mortality
15 compared to predictions from possum, p-possum and the Nottingham Hip Fracture
16 Score (NHFS) at a district general hospital in the UK-are pre-operative risk scores
17 relevant to the individual? *Journal of the American Geriatrics Society*. 2016;
18 64(S1):S83
- 19 74. Kelly KJ, Greenblatt DY, Wan Y, Rettammel RJ, Winslow E, Cho CS et al. Risk
20 stratification for distal pancreatectomy utilizing ACS-NSQIP: preoperative factors
21 predict morbidity and mortality. *Journal of Gastrointestinal Surgery*. 2011; 15(2):250-
22 259
- 23 75. Kertai MD, Steyerberg EW, Boersma E, Bax JJ, Vergouwe Y, van Urk H et al.
24 Validation of two risk models for perioperative mortality in patients undergoing
25 elective abdominal aortic aneurysm surgery. *Vascular and Endovascular Surgery*.
26 2003; 37(1):13-21
- 27 76. Khalfallah M, Jerraya H, Sbai A, Dougaz W, Changuel A, Nouira R et al. Prognostic
28 Nutritional Index score is useful to predict post-operative mortality and morbidity in
29 gastric cancer. *Tunisie Medicale*. 2016; 94(7):401-405
- 30 77. Khene ZE, Peyronnet B, Freton L, Graffaille V, Pradere B, Robert C et al. What is
31 better for predicting morbidity of robotic partial nephrectomy-a score or your clinical
32 judgement? *European Urology Focus*. 2018; Epublication
- 33 78. Kim CY, Sivasundaram L, LaBelle MW, Trivedi NN, Liu RW, Gillespie RJ. Predicting
34 adverse events, length of stay, and discharge disposition following shoulder
35 arthroplasty: a comparison of the Elixhauser Comorbidity Measure and Charlson
36 Comorbidity Index. *Journal of Shoulder and Elbow Surgery*. 2018; 27(10):1748-1755
- 37 79. Klausning A, Martini M, Wimmer MD, Gravius S, Wirtz DC, Randau TM. Postoperative
38 medical complications and intermediate care unit/intensive care unit admission in joint
39 replacement surgery: A prospective risk model. *Journal of Arthroplasty*. 2019;
40 34(4):717-722
- 41 80. Klineva M, Widimsky P, Dohnalova A. Prospective use of EuroSCORE for the short-
42 term risk evaluation of consecutive cardiac surgery candidates: are there any
43 differences in prediction of perioperative risk versus risk of nonsurgical treatments?
44 *Vnitřní Lekarství*. 2006; 52(12):1156-61
- 45 81. Knight B, Sherlock D, Manu M, D OR. Outcome predictors after major pancreatic
46 surgery; The role of possum, p-POSSUM and the Glasgow prognostic score.
47 *Pancreatology*. 2009; 9(4):476

- 1 82. Kong CH, Guest GD, Stupart DA, Faragher IG, Chan ST, Watters DA. Recalibration
2 and validation of a preoperative risk prediction model for mortality in major colorectal
3 surgery. *Diseases of the Colon and Rectum*. 2013; 56(7):844-9
- 4 83. Kong CH, Guest GD, Stupart DA, Faragher IG, Chan ST, Watters DA. Colorectal
5 preOperative Surgical Score (CrOSS) for mortality in major colorectal surgery. *ANZ
6 Journal of Surgery*. 2015; 85(6):403-7
- 7 84. Kongkaewpaisan N, Lee JM, Eid AI, Kongwibulwut M, Han K, King D et al. Can the
8 emergency surgery score (ESS) be used as a triage tool predicting the postoperative
9 need for an ICU admission? *American Journal of Surgery*. 2019; 217(1):24-28
- 10 85. Kongwibulwut M, Chiang K, Lee JM, Eid AI, Kongkaewpaisan N, Han K et al. Life
11 after 90: Predictors of mortality and performance of the ACS-NSQIP risk calculator in
12 4,724 nonagenarian patients undergoing emergency general surgery. *Journal of
13 Trauma and Acute Care Surgery*. 2019; 86(5):853-857
- 14 86. Kurki TS, Kataja MJ, Reich DL. Validation of a preoperative risk index as a predictor
15 of perioperative morbidity and hospital costs in coronary artery bypass graft surgery.
16 *Journal of Cardiothoracic and Vascular Anesthesia*. 2002; 16(4):401-4
- 17 87. Kwok AC, Lipsitz SR, Bader AM, Gawande AA. Are targeted preoperative risk
18 prediction tools more powerful? A test of models for emergency colon surgery in the
19 very elderly. *Journal of the American College of Surgeons*. 2011; 213(2):220-225
- 20 88. Lakomkin N, Zuckerman SL, Stannard B, Montejo J, Sussman ES, Virojanapa J et al.
21 Preoperative risk stratification in spine tumor surgery - a comparison of the modified
22 Charlson Index, Frailty Index, and ASA score. *Spine*. 2018; 44(13):E782-787
- 23 89. Lam CM, Fan ST, Yuen AW, Law WL, Poon K. Validation of POSSUM scoring
24 systems for audit of major hepatectomy. *British Journal of Surgery*. 2004; 91(4):450-4
- 25 90. Laurent M, Fournet M, Feit B, Oger E, Donal E, Thebault C et al. Simple bedside
26 clinical evaluation versus established scores in the estimation of operative risk in
27 valve replacement for severe aortic stenosis. *Archives of Cardiovascular Diseases*.
28 2013; 106(12):651-60
- 29 91. Lazarides MK, Arvanitis DP, Drista H, Stamos DN, Dayantas JN. POSSUM and
30 APACHE II scores do not predict the outcome of ruptured infrarenal aortic
31 aneurysms. *Annals of Vascular Surgery*. 1997; 11(2):155-8
- 32 92. Le Manach Y, Collins G, Rodseth R, Le Bihan-Benjamin C, Biccard B, Riou B et al.
33 Preoperative score to predict postoperative mortality (pospom): Derivation and
34 validation. *Anesthesiology*. 2016; 124(3):570-9
- 35 93. Lee SG, Russ A. Predicting and preventing postoperative outcomes. *Clinics in Colon
36 and Rectal Surgery*. 2019; 32(3):149-156
- 37 94. Lee TH, Marcantonio ER, Mangione CM, Thomas EJ, Polanczyk CA, Cook EF et al.
38 Derivation and prospective validation of a simple index for prediction of cardiac risk of
39 major noncardiac surgery. *Circulation*. 1999; 100(10):1043-9
- 40 95. Lima MJM, Cristelo DFM, Mourao JB. Physiological and operative severity score for
41 the enumeration of mortality and morbidity, frailty, and perioperative quality of life in
42 the elderly. *Saudi Journal of Anaesthesia*. 2019; 13(1):3-8
- 43 96. Lindroth H, Bratzke L, Twadell S, Rowley P, Kildow J, Danner M et al. Predicting
44 postoperative delirium severity in older adults: The role of surgical risk and executive
45 function. *International Journal of Geriatric Psychiatry*. 2019; 34(7):1018-1028

- 1 97. Malik AT, Quatman CE, Phieffer LS, Jain N, Khan SN, Ly TV. 30-day adverse events,
2 length of stay and re-admissions following surgical management of pelvic/acetabular
3 fractures. *Journal of Clinical Orthopaedics and Trauma*. 2019; Epublication
- 4 98. Marconi L, de Bruijn R, van Werkhoven E, Beisland C, Fife K, Heidenreich A et al.
5 External validation of a predictive model of survival after cytoreductive nephrectomy
6 for metastatic renal cell carcinoma. *World Journal of Urology*. 2018; 01:01
- 7 99. Markovic D, Jevtovic-Stoimenov T, Stojanovic M, Vukovic A, Dinic V, Markovic-
8 Zivkovic B et al. Addition of clinical risk scores improves prediction performance of
9 American Society of Anesthesiologists (ASA) physical status classification for
10 postoperative mortality in older patients: a pilot study. *European Geriatric Medicine*.
11 2018; 9(1):51-59
- 12 100. Marufu TC, Mannings A, Moppett IK. Risk scoring models for predicting peri-operative
13 morbidity and mortality in people with fragility hip fractures: Qualitative systematic
14 review. *Injury*. 2015; 46(12):2325-34
- 15 101. Mayhew D, Mendonca V, Murthy BVS. A review of ASA physical status - historical
16 perspectives and modern developments. *Anaesthesia*. 2019; 74(3):373-379
- 17 102. Meguid RA, Bronsert MR, Juarez-Colunga E, Hammermeister KE, Henderson WG.
18 Surgical risk preoperative assessment system (SURPAS): II. Parsimonious risk
19 models for postoperative adverse outcomes addressing need for laboratory variables
20 and surgeon specialty-specific models. *Annals of Surgery*. 2016; 264(1):10-22
- 21 103. Meguid RA, Bronsert MR, Juarez-Colunga E, Hammermeister KE, Henderson WG.
22 Surgical risk preoperative assessment system (SURPAS): III. accurate preoperative
23 prediction of 8 adverse outcomes using 8 predictor variables. *Annals of Surgery*.
24 2016; 264(1):23-31
- 25 104. Nag DS. Assessing the risk: Scoring systems for outcome prediction in emergency
26 laparotomies. *Biomedicine*. 2015; 5(4):20
- 27 105. Nagashima I, Takada T, Okinaga K, Nagawa H. A scoring system for the assessment
28 of the risk of mortality after partial hepatectomy in patients with chronic liver
29 dysfunction. *Journal of Hepato-Biliary-Pancreatic Surgery*. 2005; 12(1):44-8
- 30 106. Nashef SA, Roques F, Hammill BG, Peterson ED, Michel P, Grover FL et al.
31 Validation of European system for cardiac operative risk evaluation (EuroSCORE) in
32 North American cardiac surgery. *European Journal of Cardio-Thoracic Surgery*. 2002;
33 22(1):101-5
- 34 107. Nashef SA, Roques F, Michel P, Gauducheau E, Lemeshow S, Salamon R.
35 European system for cardiac operative risk evaluation (EuroSCORE). *European*
36 *Journal of Cardio-Thoracic Surgery*. 1999; 16(1):9-13
- 37 108. National Institute for Health and Care Excellence. Developing NICE guidelines: the
38 manual, updated 2018. London. National Institute for Health and Care Excellence,
39 2014. Available from: [https://www.nice.org.uk/process/pmg20/chapter/introduction-](https://www.nice.org.uk/process/pmg20/chapter/introduction-and-overview)
40 [and-overview](https://www.nice.org.uk/process/pmg20/chapter/introduction-and-overview)
- 41 109. Nesi F, Leo E, Biancari F, Bartolucci R, Rainio P, Satta J et al. Preoperative risk
42 stratification in patients undergoing elective infrarenal aortic aneurysm surgery:
43 evaluation of five risk scoring methods. *European Journal of Vascular and*
44 *Endovascular Surgery*. 2004; 28(1):52-8
- 45 110. Ngulube A, Muguti GI, Muguti EG. Validation of POSSUM, P-POSSUM and the
46 surgical risk scale in major general surgical operations in Harare: A prospective
47 observational study. *Annals of Medicine & Surgery*. 2019; 41:33-39

- 1 111. O'Brien SM, Shahian DM, Filardo G, Ferraris VA, Haan CK, Rich JB et al. The
2 Society of Thoracic Surgeons 2008 cardiac surgery risk models: part 2--isolated valve
3 surgery. *Annals of Thoracic Surgery*. 2009; 88(1 Suppl):S23-42
- 4 112. Parmar CD, Torella F. Prediction of major adverse cardiac events in vascular surgery:
5 are cardiac risk scores of any practical value? *Vascular and Endovascular Surgery*.
6 2010; 44(1):14-9
- 7 113. Patila T, Kukkonen S, Vento A, Pettila V, Suojaranta-Ylinen R. Relation of the
8 Sequential Organ Failure Assessment score to morbidity and mortality after cardiac
9 surgery. *Annals of Thoracic Surgery*. 2006; 82(6):2072-8
- 10 114. Patterson BO, Holt PJ, Hinchliffe R, Loftus IM, Thompson MM. Predicting risk in
11 elective abdominal aortic aneurysm repair: a systematic review of current evidence.
12 *European Journal of Vascular and Endovascular Surgery*. 2008; 36(6):637-45
- 13 115. Paul M, Raz A, Leibovici L, Madar H, Holinger R, Rubinovitch B. Sternal wound
14 infection after coronary artery bypass graft surgery: validation of existing risk scores.
15 *Journal of Thoracic and Cardiovascular Surgery*. 2007; 133(2):397-403
- 16 116. Pavone C, Candela L, Fontana D, Simonato A. Postoperative complications and 90-
17 day mortality in radical cystectomy in high-risk patients: A monocentric retrospective
18 observational study. *Urologia (Treviso)*. 2018; 85(3):111-117
- 19 117. Perkins J. The MELD score as a predictor of nontransplant surgical mortality in
20 patients with cirrhosis. *Liver Transplantation*. 2006; 12(1):159
- 21 118. Perkins L, Jeffries M, Patel T. Utility of preoperative scores for predicting morbidity
22 after cholecystectomy in patients with cirrhosis. *Clinical Gastroenterology and*
23 *Hepatology*. 2004; 2(12):1123-8
- 24 119. Pillai BS, Baloria KA, Selot N. Validation of the European System for Cardiac
25 Operative Risk Evaluation-II model in an urban Indian population and comparison
26 with three other risk scoring systems. *Annals of Cardiac Anaesthesia*. 2015;
27 18(3):335-42
- 28 120. Pinna-Pintor P, Bobbio M, Colangelo S, Veglia F, Giammaria M, Cuni D et al.
29 Inaccuracy of four coronary surgery risk-adjusted models to predict mortality in
30 individual patients. *European Journal of Cardio-Thoracic Surgery*. 2002; 21(2):199-
31 204
- 32 121. Pliam MB, Shaw RE, Zapolanski A. Comparative analysis of coronary surgery risk
33 stratification models. *Journal of Invasive Cardiology*. 1997; 9(3):203-222
- 34 122. Prabakaran V, Thangaraju T, Mathew AC, Govindan V, Kannan V, Poulouse TR. CR-
35 Possum-Can it be used to predict morbidity? A single-centre retrospective study.
36 *Indian Journal of Surgical Oncology*. 2019; 10(1):174-179
- 37 123. Ranucci M, Castelvechio S, Menicanti L, Frigiola A, Pelissero G. Accuracy,
38 calibration and clinical performance of the EuroSCORE: can we reduce the number of
39 variables? *European Journal of Cardio-Thoracic Surgery*. 2010; 37(3):724-9
- 40 124. Ranucci M, Di Dedda U, Castelvechio S, La Rovere MT, Menicanti L, Surgical
41 Clinical Outcome Research Group. In search of the ideal risk-scoring system for very
42 high-risk cardiac surgical patients: a two-stage approach. *Journal of Cardiothoracic*
43 *Surgery*. 2016; Epublication
- 44 125. Ranucci M, Pistuddi V, Scolletta S, de Vincentiis C, Menicanti L. The ACEF II Risk
45 Score for cardiac surgery: updated but still parsimonious. *European Heart Journal*.
46 2018; 39(23):2183-2189

- 1 126. Rasmussen M, Platell C, Jones M. Monitoring excess unplanned return to theatre
2 following colorectal cancer surgery. *ANZ Journal of Surgery*. 2018; 88(11):1168-1173
- 3 127. Raymond BL, Wanderer JP, Hawkins AT, Geiger TM, Ehrenfeld JM, Stokes JW et al.
4 Use of the American College of Surgeons national surgical quality improvement
5 program surgical risk calculator during preoperative risk discussion: The patient
6 perspective. *Anesthesia and Analgesia*. 2019; 128(4):643-650
- 7 128. Reis P, Lopes AI, Leite D, Moreira J, Mendes L, Ferraz S et al. Predicting mortality in
8 patients admitted to the intensive care unit after open vascular surgery. *Surgery
9 Today*. 2019; 49(10):836-842
- 10 129. Rivard C, Nahum R, Slagle E, Duinincq M, Isaksson Vogel R, Teoh D. Evaluation of
11 the performance of the ACS NSQIP surgical risk calculator in gynecologic oncology
12 patients undergoing laparotomy. *Gynecologic Oncology*. 2016; 141(2):281-286
- 13 130. Rix TE, Bates T. Pre-operative risk scores for the prediction of outcome in elderly
14 people who require emergency surgery. *World Journal of Emergency Surgery*. 2007;
15 2:16
- 16 131. Roxas MFT, Castro EJT. Validating the American College of Surgeons (ACS)-NSQIP
17 surgical risk calculator in a Philippine ACS-NSQIP hospital collaboration. *Journal of
18 the American College of Surgeons*. 2017; 225 (4 Suppl 2):e23-e24
- 19 132. Ryan SP, Politzer C, Green C, Wellman S, Bolognesi M, Seyler T. Albumin versus
20 American Society of Anesthesiologists score: Which is more predictive of
21 complications following total joint arthroplasty? *Orthopedics*. 2018; 41(6):354-362
- 22 133. Saafan T, El Ansari W, Al-Yahri O, Eleter A, Eljohary H, Alfkey R et al. Assessment of
23 PULP score in predicting 30-day perforated duodenal ulcer morbidity, and
24 comparison of its performance with Boey and ASA, a retrospective study. *Annals of
25 Medicine and Surgery*. 2019; 42:23-28
- 26 134. Sankar A, Beattie WS, Tait G, Wijesundera DN. Evaluation of validity of the STOP-
27 BANG questionnaire in major elective noncardiac surgery. *British Journal of
28 Anaesthesia*. 2019; 122(2):255-262
- 29 135. Saunders ND, Kearney JF, Lyon EH, Bloomston M, Squires MH, Kooby DA et al. The
30 ACS-NSQIP surgical risk calculator lacks enough sensitivity to risk stratify patients
31 with gastric cancer at academic medical centers. *Annals of Surgical Oncology*. 2015;
32 22(1):S136
- 33 136. Schneider AL, Deig CR, Prasad KG, Nelson BG, Mantravadi AV, Brigance JS et al.
34 Ability of the National Surgical Quality Improvement Program Risk Calculator to
35 predict complications following total laryngectomy. *JAMA Otolaryngology Head &
36 Neck Surgery*. 2016; 142(10):972-979
- 37 137. Sfoungaristos S, Gofrit ON, Yutkin V, Landau EH, Pode D, Duvdevani M. External
38 validation of CROES nephrolithometry as a preoperative predictive system for
39 percutaneous nephrolithotomy outcomes. *Journal of Urology*. 2016; 195(2):372-6
- 40 138. Sfoungaristos S, Lorber A, Gofrit ON, Yutkin V, Landau EH, Pode D et al. External
41 validation and predictive accuracy assessment of guy's stone score as a preoperative
42 tool for estimating percutaneous nephrolithotomy outcomes. *Journal of Endourology*.
43 2015; 29(10):1131-1135
- 44 139. Shah R, Velanovich V, Syed Z, Swartz A, Rubinfeld I. Limitations of patient-
45 associated co-morbidity model in predicting postoperative morbidity and mortality in
46 pancreatic operations. *Journal of Gastrointestinal Surgery*. 2012; 16(5):986-92

- 1 140. Shaker S, Rivard C, Nahum R, Vogel RI, Teoh D. The American College of Surgeon's
2 surgical risk calculator's ability to predict disposition in older gynecologic oncology
3 patients undergoing laparotomy. *Journal of Geriatric Oncology*. 2019; 10(4):618-622
- 4 141. Sharma A, Tanenbaum JE, Hogue O, Mehdi S, Vallabh S, Hu E et al. Predicting
5 clinical outcomes following surgical correction of adult spinal deformity. *Neurosurgery*.
6 2019; 84(3):733-740
- 7 142. Sharrock AE, McLachlan J, Chambers R, Bailey IS, Kirkby-Bott J. Emergency
8 abdominal surgery in the elderly: Can we predict mortality? *World Journal of Surgery*.
9 2017; 41(2):402-409
- 10 143. Shiba H, Misawa T, Fujiwara Y, Futagawa Y, Furukawa K, Haruki K et al. Glasgow
11 prognostic score predicts therapeutic outcome after pancreaticoduodenectomy for
12 carcinoma of the ampulla of vater. *Anticancer Research*. 2013; 33(6):2715-21
- 13 144. Silaschi M, Conradi L, Seiffert M, Schnabel R, Schon G, Blankenberg S et al.
14 Predicting risk in transcatheter aortic valve implantation: Comparative analysis of
15 EuroSCORE II and established risk stratification tools. *Thoracic and Cardiovascular
16 Surgeon*. 2015; 63(6):472-8
- 17 145. Silva Junior JM, Malbouisson LM, Nuevo HL, Barbosa LG, Marubayashi LY, Teixeira
18 IC et al. Applicability of the simplified acute physiology score (SAPS 3) in Brazilian
19 hospitals. *Revista Brasileira de Anestesiologia*. 2010; 60(1):20-31
- 20 146. Simpson G, Parker A, Hopley P, Wilson J, Magee C. Pre-operative psoas major
21 measurement compared to P-POSSUM as a prognostic indicator in over-80s
22 undergoing emergency laparotomy. *European Journal of Trauma and Emergency
23 Surgery*. 2018; Epublication
- 24 147. Singh N, Gimpel D, Parkinson G, Conaglen P, Meikle F, Lin Z et al. Assessment of
25 the EuroSCORE II in a New Zealand tertiary centre. *Heart, Lung & Circulation*. 2018;
26 Epublication
- 27 148. Slim K, Panis Y, Alves A, Kwiatkowski F, Mathieu P, Manton G et al. Predicting
28 postoperative mortality in patients undergoing colorectal surgery. *World Journal of
29 Surgery*. 2006; 30(1):100-6
- 30 149. Sobotka LA, Husain SG, Krishna SG, Hinton A, Pavurula R, Conwell DL et al. A risk
31 score model of 30-day readmission in ulcerative colitis after colectomy or
32 proctectomy. *Clinical and Translational Gastroenterology*. 2018; 9(8):175
- 33 150. Srilata M, Padhy N, Padmaja D, Gopinath R. Does Parsonnet scoring model predict
34 mortality following adult cardiac surgery in India? *Annals of Cardiac Anaesthesia*.
35 2015; 18(2):161-9
- 36 151. Strilchuk L, Besh D. Estimation of cardiosurgical intervention risk according to
37 EuroSCORE in patients with acute coronary syndrome and different gallbladder
38 conditions before coronary artery bypass grafting. *Kardiochirurgia I Torakochirurgia
39 Polska*. 2018; 15(4):238-240
- 40 152. Suresh V, Levites H, Peskoe S, Hein R, Avashia Y, Erdmann D. Validation of the
41 American College of Surgeons national surgical quality improvement program risk
42 model for patients undergoing panniculectomy. *Annals of Plastic Surgery*. 2019;
43 83(1):94-98
- 44 153. Suzuki Y, Okabayashi K, Hasegawa H, Tsuruta M, Shigeta K, Kondo T et al.
45 Comparison of preoperative inflammation-based prognostic scores in patients with
46 colorectal cancer. *Annals of Surgery*. 2018; 267(3):527-531

- 1 154. Tambyraja AL, Murie JA, Chalmers RT. Prediction of outcome after abdominal aortic
2 aneurysm rupture. *Journal of Vascular Surgery*. 2008; 47(1):222-30
- 3 155. Teeuwen PH, Bremers AJ, Groenewoud JM, van Laarhoven CJ, Bleichrodt RP.
4 Predictive value of POSSUM and ACPGBI scoring in mortality and morbidity of
5 colorectal resection: a case-control study. *Journal of Gastrointestinal Surgery*. 2011;
6 15(2):294-303
- 7 156. Teoh D, Halloway RN, Heim J, Vogel RI, Rivard C. Evaluation of the American
8 College of Surgeons National Surgical Quality Improvement Program surgical risk
9 calculator in gynecologic oncology patients undergoing minimally invasive surgery.
10 *Journal of Minimally Invasive Gynecology*. 2017; 24(1):48-54
- 11 157. ter Horst R, Markou AL, Noyez L. Prognostic value of preoperative quality of life on
12 mortality after isolated elective myocardial revascularization. *Interactive*
13 *Cardiovascular and Thoracic Surgery*. 2012; 15(4):651-4
- 14 158. Thiels CA, Yu D, Abdelrahman AM, Habermann EB, Hallbeck S, Pasupathy KS et al.
15 The use of patient factors to improve the prediction of operative duration using
16 laparoscopic cholecystectomy. *Surgical Endoscopy*. 2017; 31(1):333-340
- 17 159. Tian R, Xu H, Lv S. The use of a modified EuroSCORE to evaluate mortality risk in
18 percutaneous coronary intervention. *Annals of Thoracic and Cardiovascular Surgery*.
19 2014; 20(1):32-7
- 20 160. Tominaga T, Takeshita H, Takagi K, Kunizaki M, To K, Abo T et al. E-PASS score as
21 a useful predictor of postoperative complications and mortality after colorectal surgery
22 in elderly patients. *International Journal of Colorectal Disease*. 2016; 31(2):217-25
- 23 161. Tran Ba Loc P, du Montcel ST, Duron JJ, Levard H, Suc B, Descottes B et al. Elderly
24 POSSUM, a dedicated score for prediction of mortality and morbidity after major
25 colorectal surgery in older patients. *British Journal of Surgery*. 2010; 97(3):396-403
- 26 162. Traven SA, Reeves RA, Sekar MG, Slone HS, Walton ZJ. New 5-factor modified
27 frailty index predicts morbidity and mortality in primary hip and knee arthroplasty.
28 *Journal of Arthroplasty*. 2019; 34(1):140-144
- 29 163. Tsaousi GG, Pitsis AA, Ioannidis GD, Pourzitaki CK, Yannacou-Peftoulidou MN,
30 Vasilakos DG. Implementation of EuroSCORE II as an adjunct to APACHE II model
31 and SOFA score, for refining the prognostic accuracy in cardiac surgical patients.
32 *Journal of Cardiovascular Surgery*. 2015; 56(6):919-27
- 33 164. Tyriztis SI, Papadoukakis S, Katafigiotis I, Adamakis I, Anastasiou I, Stravodimos KG
34 et al. Implementation and external validation of Preoperative Aspects and Dimensions
35 Used for an Anatomical (PADUA) score for predicting complications in 74 consecutive
36 partial nephrectomies. *BJU International*. 2012; 109(12):1813-8
- 37 165. Vaid S, Bell T, Grim R, Ahuja V. Predicting risk of death in general surgery patients
38 on the basis of preoperative variables using American College of Surgeons National
39 Surgical Quality Improvement Program data. *Permanente Journal*. 2012; 16(4):10-7
- 40 166. Varela Barca L, Lopez-Menendez J, Navas Elorza E, Moya Mur JL, Centella
41 Hernandez T, Redondo Palacios A et al. Long-term prognosis after surgery for
42 infective endocarditis: Distinction between predictors of early and late survival.
43 *Enfermedades Infecciosas y Microbiología Clínica*. 2019; 37(7):435-440
- 44 167. Vather R, Zargar-Shoshtari K, Adegbola S, Hill AG. Comparison of the possum, P-
45 POSSUM and Cr-POSSUM scoring systems as predictors of postoperative mortality
46 in patients undergoing major colorectal surgery. *ANZ Journal of Surgery*. 2006;
47 76(9):812-6

- 1 168. Veeravagu A, Li A, Swinney C, Tian L, Moraff A, Azad TD et al. Predicting
2 complication risk in spine surgery: a prospective analysis of a novel risk assessment
3 tool. *Journal of Neurosurgery Spine*. 2017; 27(1):81-91
- 4 169. Wang H, Wang H, Chen T, Liang X, Song Y, Wang J. Evaluation of the POSSUM, P-
5 POSSUM and E-PASS scores in the surgical treatment of hilar cholangiocarcinoma.
6 *World Journal of Surgical Oncology*. 2014; 12:191
- 7 170. Wang TK, Choi DH, Stewart R, Gamble G, Haydock D, Ruygrok P. Comparison of
8 four contemporary risk models at predicting mortality after aortic valve replacement.
9 *Journal of Thoracic and Cardiovascular Surgery*. 2015; 149(2):443-8
- 10 171. Wang TK, Oh T, Voss J, Gamble G, Kang N, Pemberton J. Comparison of
11 contemporary risk scores for predicting outcomes after surgery for active infective
12 endocarditis. *Heart and Vessels*. 2015; 30(2):227-34
- 13 172. Wang X, Hu Y, Zhao B, Su Y. Predictive validity of the ACS-NSQIP surgical risk
14 calculator in geriatric patients undergoing lumbar surgery. *Medicine*. 2017;
15 96(43):e8416
- 16 173. Wani NA, Parray FQ, Safdar G. "POSSUM": a good indicator of morbidity and
17 mortality in calcular disease of biliary tract. *JK Practitioner*. 2005; 12(1):6-10
- 18 174. Wendt D, Thielmann M, Kahlert P, Kastner S, Price V, Al-Rashid F et al. Comparison
19 between different risk scoring algorithms on isolated conventional or transcatheter
20 aortic valve replacement. *Annals of Thoracic Surgery*. 2014; 97(3):796-802
- 21 175. Wingert NC, Gotoff J, Parrilla E, Gotoff R, Hou L, Ghanem E. The ACS NSQIP risk
22 calculator is a fair predictor of acute periprosthetic joint infection. *Clinical*
23 *Orthopaedics and Related Research*. 2016; 474(7):1643-8
- 24 176. Wolters U, Mannheim S, Wassmer G, Brunkwall J. What is the value of available risk-
25 scores in predicting postoperative complications after aorto-iliac surgery? A
26 prospective non randomized study. *Journal of Cardiovascular Surgery*. 2006;
27 47(2):177-85
- 28 177. Yap MKC, Ang KF, Gonzales-Porciuncula LA, Esposito E. Validation of the American
29 College of Surgeons risk calculator for preoperative risk stratification. *Heart Asia*.
30 2018; 10(2):e010993
- 31 178. Ye IB, Girdler SJ, Cheung ZB, White SJ, Ranson WA, Cho SK. Risk factors
32 associated with 30-day mortality after open reduction and internal fixation of vertebral
33 fractures. *World Neurosurgery*. 2019; 125:e1069-e1073
- 34 179. Zattoni D, Montroni I, Saur NM, Garutti A, Bacchi Reggiani ML, Galetti C et al. A
35 simple screening tool to predict outcomes in older adults undergoing emergency
36 general surgery. *Journal of the American Geriatrics Society*. 2019; 67(2):309-316
- 37 180. Zhang B, Sun H, Hu S, Xu J, Wang W, Song Y et al. Predictive value of different
38 scoring systems for early postoperative mortality in patients with a second coronary
39 artery bypass grafting. *Chinese Medical Journal*. 2014; 127(4):614-7
- 40 181. Zheng Z, Fan H, Gao H, Li X, Yuan X, Meng J et al. Mortality risk model for heart
41 valve surgery in China. *Journal of Heart Valve Disease*. 2013; 22(1):93-101
- 42 182. Zugel NP, Kox M, Lichtwark-Aschoff M, Gippner-Steppert C, Jochum M. Predictive
43 relevance of clinical scores and inflammatory parameters in secondary peritonitis.
44 *Bulletin de la Société des Sciences Médicales du Grand-Duché de Luxembourg*.
45 2011; (1):41-71

1 Appendices

2 Appendix A: Review protocols

3 **Table 4: Review protocol: Preoperative risk stratification tools**

ID	Field	Content
0.	PROSPERO registration number	Not registered
1.	Review title	Which validated preoperative risk stratification tools best identify increased risk of mortality and morbidity in adults who will be undergoing surgery?
2.	Review question	Which validated preoperative risk stratification tools best identify increased risk of mortality and morbidity in adults who will be undergoing surgery?
3.	Objective	To determine which validated preoperative risk stratification tools best identify increased risk of mortality and morbidity in adults who will be undergoing surgery.
4.	Searches	Medline, Embase, The Cochrane Library
5.	Condition or domain being studied	Perioperative care
6.	Population	Inclusion: Adults 18 years and over undergoing surgery. Exclusion: <ul style="list-style-type: none"> • children and young people aged 17 years and younger • surgery for burns, traumatic brain injury or neurosurgery
7.	Test	Validated risk stratification tools: <ul style="list-style-type: none"> • P-POSSUM score (Physiological and Operative Severity Score for the Enumeration of Mortality and Morbidity) • SORT (Surgical Outcome Risk Tool) • NSQIP (National Surgical Quality Improvement Program) universal surgical risk calculator
8.	Comparator/Reference standard/Confounding factors	n/a
9.	Types of study to be included	Prospective and retrospective cohort studies
10.	Other exclusion criteria	<ul style="list-style-type: none"> • derivation studies • internal validation studies • non-English language studies • studies published before 2000
11.	Context	n/a

12.	Primary outcomes (critical outcomes)	Mortality Morbidity
13.	Secondary outcomes (important outcomes)	n/a
14.	Data extraction (selection and coding)	<p>EndNote will be used for reference management, sifting, citations and bibliographies. All references identified by the searches and from other sources will be screened for inclusion. 10% of the abstracts will be reviewed by two reviewers, with any disagreements resolved by discussion or, if necessary, a third independent reviewer. The full text of potentially eligible studies will be retrieved and will be assessed in line with the criteria outlined above.</p> <p>A standardised form will be used to extract data from studies (see Developing NICE guidelines: the manual section 6.4).</p> <p>Pairwise meta-analyses performed using Cochrane Review Manager (RevMan5).</p>
15.	Risk of bias (quality) assessment	<p>Risk of bias will be assessed using the appropriate checklist as described in Developing NICE guidelines: the manual</p> <p>10% of all evidence reviews are quality assured by a senior research fellow. This includes checking:</p> <ul style="list-style-type: none"> • papers were included /excluded appropriately • a sample of the data extractions • correct methods are used to synthesise data • a sample of the risk of bias assessments <p>Disagreements between the review authors over the risk of bias in particular studies will be resolved by discussion, with involvement of a third review author where necessary.</p>
16.	Strategy for data synthesis	GRADEpro used to assess the quality of evidence for each outcome.
17.	Analysis of sub-groups	Subgroups: <ul style="list-style-type: none"> • older adults (over 60)
18.	Type and method of review	<input type="checkbox"/> Intervention
		<input type="checkbox"/> Diagnostic
		<input type="checkbox"/> Prognostic
		<input type="checkbox"/> Qualitative
		<input type="checkbox"/> Epidemiologic
		<input type="checkbox"/> Service Delivery
		<input checked="" type="checkbox"/> Risk prediction

19.	Language	English		
20.	Country	England		
21.	Anticipated or actual start date	[x]		
22.	Anticipated completion date	[x]		
23.	Stage of review at time of this submission	Review stage	Started	Completed
		Preliminary searches	<input type="checkbox"/>	<input checked="" type="checkbox"/>
		Piloting of the study selection process	<input type="checkbox"/>	<input checked="" type="checkbox"/>
		Formal screening of search results against eligibility criteria	<input type="checkbox"/>	<input checked="" type="checkbox"/>
		Data extraction	<input type="checkbox"/>	<input checked="" type="checkbox"/>
		Risk of bias (quality) assessment	<input type="checkbox"/>	<input checked="" type="checkbox"/>
		Data analysis	<input type="checkbox"/>	<input checked="" type="checkbox"/>
24.	Named contact	<p>5a. Named contact National Guideline Centre</p> <p>5b Named contact e-mail POC@nice.org.uk</p> <p>5e Organisational affiliation of the review National Institute for Health and Care Excellence (NICE) and the National Guideline Centre</p>		
25.	Review team members	<p>From the National Guideline Centre:</p> <p>Ms Kate Ashmore Ms Kate Kelley Ms Sharon Swaine Mr Ben Mayer Ms Maria Smyth Mr Vimal Bedia Mr Audrius Stonkus Ms Madelaine Zucker Ms Margaret Constanti Ms Annabelle Davis Ms Lina Gulhane</p>		
26.	Funding sources/sponsor	This systematic review is being completed by		

		the National Guideline Centre which receives funding from NICE.	
27.	Conflicts of interest	All guideline committee members and anyone who has direct input into NICE guidelines (including the evidence review team and expert witnesses) must declare any potential conflicts of interest in line with NICE's code of practice for declaring and dealing with conflicts of interest. Any relevant interests, or changes to interests, will also be declared publicly at the start of each guideline committee meeting. Before each meeting, any potential conflicts of interest will be considered by the guideline committee Chair and a senior member of the development team. Any decisions to exclude a person from all or part of a meeting will be documented. Any changes to a member's declaration of interests will be recorded in the minutes of the meeting. Declarations of interests will be published with the final guideline.	
28.	Collaborators	Development of this systematic review will be overseen by an advisory committee who will use the review to inform the development of evidence-based recommendations in line with section 3 of Developing NICE guidelines: the manual . Members of the guideline committee are available on the NICE website: [NICE guideline webpage].	
29.	Other registration details	[n/a]	
30.	Reference/URL for published protocol	[Give the citation and link for the published protocol, if there is one.]	
31.	Dissemination plans	NICE may use a range of different methods to raise awareness of the guideline. These include standard approaches such as: <ul style="list-style-type: none"> • notifying registered stakeholders of publication • publicising the guideline through NICE's newsletter and alerts • issuing a press release or briefing as appropriate, posting news articles on the NICE website, using social media channels, and publicising the guideline within NICE. 	
32.	Keywords	Perioperative care, surgery, risk prediction	
33.	Details of existing review of same topic by same authors	[n/a]	
34.	Current review status	<input type="checkbox"/>	Ongoing
		<input checked="" type="checkbox"/>	Completed but not published
		<input type="checkbox"/>	Completed and published
		<input type="checkbox"/>	Completed, published and being updated

		<input type="checkbox"/>	Discontinued
35.	Additional information	[n/a]	
36.	Details of final publication	www.nice.org.uk	

1

2

Table 5: Health economic review protocol

Review question	All questions – health economic evidence
Objectives	To identify health economic studies relevant to any of the review questions.
Search criteria	<ul style="list-style-type: none"> • Populations, interventions and comparators must be as specified in the clinical review protocol above. • Studies must be of a relevant health economic study design (cost–utility analysis, cost-effectiveness analysis, cost–benefit analysis, cost–consequences analysis, comparative cost analysis). • Studies must not be a letter, editorial or commentary, or a review of health economic evaluations. (Recent reviews will be ordered although not reviewed. The bibliographies will be checked for relevant studies, which will then be ordered.) • Unpublished reports will not be considered unless submitted as part of a call for evidence. • Studies must be in English.
Search strategy	A health economic study search will be undertaken using population-specific terms and a health economic study filter – see appendix B below.
Review strategy	<p>Studies not meeting any of the search criteria above will be excluded. Studies published before 2003, abstract-only studies and studies from non-OECD countries or the USA will also be excluded.</p> <p>Each remaining study will be assessed for applicability and methodological limitations using the NICE economic evaluation checklist which can be found in appendix H of Developing NICE guidelines: the manual (2014).¹⁰⁸</p> <p>Inclusion and exclusion criteria</p> <ul style="list-style-type: none"> • If a study is rated as both ‘Directly applicable’ and with ‘Minor limitations’ then it will be included in the guideline. A health economic evidence table will be completed and it will be included in the health economic evidence profile. • If a study is rated as either ‘Not applicable’ or with ‘Very serious limitations’ then it will usually be excluded from the guideline. If it is excluded then a health economic evidence table will not be completed and it will not be included in the health economic evidence profile. • If a study is rated as ‘Partially applicable’, with ‘Potentially serious limitations’ or both then there is discretion over whether it should be included. <p>Where there is discretion</p> <p>The health economist will make a decision based on the relative applicability and quality of the available evidence for that question, in discussion with the guideline committee if required. The ultimate aim is to include health economic studies that are helpful for decision-making in the context of the guideline and the current NHS setting. If several studies are considered of sufficiently high applicability and methodological quality that they could all be included, then the health economist, in discussion with the committee if required, may decide to include only the most applicable studies and to selectively exclude the remaining studies. All studies excluded on the basis of applicability or methodological limitations will be listed with explanation in the excluded health economic studies appendix below.</p>

The health economist will be guided by the following hierarchies.

Setting:

- UK NHS (most applicable).
- OECD countries with predominantly public health insurance systems (for example, France, Germany, Sweden).
- OECD countries with predominantly private health insurance systems (for example, Switzerland).
- Studies set in non-OECD countries or in the USA will be excluded before being assessed for applicability and methodological limitations.

Health economic study type:

- Cost–utility analysis (most applicable).
- Other type of full economic evaluation (cost–benefit analysis, cost-effectiveness analysis, cost–consequences analysis).
- Comparative cost analysis.
- Non-comparative cost analyses including cost-of-illness studies will be excluded before being assessed for applicability and methodological limitations.

Year of analysis:

- The more recent the study, the more applicable it will be.
- Studies published in 2003 or later but that depend on unit costs and resource data entirely or predominantly from before 2003 will be rated as ‘Not applicable’.
- Studies published before 2003 will be excluded before being assessed for applicability and methodological limitations.

Quality and relevance of effectiveness data used in the health economic analysis:

- The more closely the clinical effectiveness data used in the health economic analysis match with the outcomes of the studies included in the clinical review the more useful the analysis will be for decision-making in the guideline. For example, economic evaluations based on observational studies will be excluded, when the clinical review is only looking for RCTs,

1
2

Appendix B: Literature search strategies

The literature searches for this review are detailed below and complied with the methodology outlined in Developing NICE guidelines: the manual 2014, updated 2018.¹⁰⁸

For more detailed information, please see the Methodology Review.

B.1 Clinical search literature search strategy

Searches were constructed using a PICO framework where population (P) terms were combined with Intervention (I) and in some cases Comparison (C) terms. Outcomes (O) are rarely used in search strategies for interventions as these concepts may not be well described in title, abstract or indexes and therefore difficult to retrieve. Search filters were applied to the search where appropriate.

Table 6: Database date parameters and filters used

Database	Dates searched	Search filter used
Medline (OVID)	1946 – 30 May 2019	Exclusions
Embase (OVID)	1974 – 30 May 2019	Exclusions
The Cochrane Library (Wiley)	Cochrane Reviews to 2019 Issue 5 of 12 CENTRAL to 2019 Issue 5 of 12 DARE, and NHSEED to 2015 Issue 2 of 4 HTA to 2016 Issue 4 of 4	None

Medline (Ovid) search terms

1.	exp Preoperative Care/ or Preoperative Period/
2.	(pre-operat* or preoperat* or pre-surg* or presurg*).ti,ab.
3.	((before or prior or advance or pre or prepar*) adj3 (surg* or operat* or anaesthes* or anesthes*)).ti,ab.
4.	or/1-3
5.	limit 4 to English language
6.	(exp child/ or exp pediatrics/ or exp infant/) not (exp adolescent/ or exp adult/ or exp middle age/ or exp aged/)
7.	5 not 6
8.	letter/
9.	editorial/
10.	news/
11.	exp historical article/
12.	Anecdotes as Topic/
13.	comment/
14.	case report/
15.	(letter or comment*).ti.
16.	or/8-15
17.	randomized controlled trial/ or random*.ti,ab.
18.	16 not 17

19.	exp Preoperative Care/ or Preoperative Period/
20.	(pre-operat* or preoperat* or pre-surg* or presurg*).ti,ab.
21.	((before or prior or advance or pre or prepar*) adj3 (surg* or operat* or anaesthes* or anesthes*)).ti,ab.
22.	or/1-3
23.	limit 4 to English language
24.	(exp child/ or exp pediatrics/ or exp infant/) not (exp adolescent/ or exp adult/ or exp middle age/ or exp aged/)
25.	5 not 6
26.	letter/
27.	editorial/
28.	news/
29.	exp historical article/
30.	Anecdotes as Topic/
31.	comment/
32.	case report/
33.	(letter or comment*).ti.
34.	or/8-15
35.	randomized controlled trial/ or random*.ti,ab.
36.	16 not 17
37.	animals/ not humans/
38.	exp Animals, Laboratory/
39.	exp Animal Experimentation/
40.	exp Models, Animal/
41.	exp Rodentia/
42.	(rat or rats or mouse or mice).ti.
43.	or/18-24
44.	7 not 25
45.	Decision Support Techniques/
46.	Health Status Indicators/
47.	(POSSUM or "Physiological and Operative Severity Score").ti,ab.
48.	SORT.ti,ab.
49.	"Surgical Outcome Risk Tool".ti,ab.
50.	((risk* or predict* or prognos*) adj2 (tool* or rule* or index* or indices or score* or scoring or scale* or model* or system* or algorithm* or stratif* or criteria or calculat*)).ti,ab.
51.	or/27-32
52.	26 and 33

1

Embase (Ovid) search terms

1.	*preoperative care/ or *preoperative period/
2.	(pre-operat* or preoperat* or pre-surg* or presurg*).ti,ab.
3.	((before or prior or advance or pre or prepar*) adj3 (surg* or operat* or anaesthes* or anesthes*)).ti,ab.
4.	or/1-3
5.	limit 4 to English language
6.	(exp child/ or exp pediatrics/ or exp infant/) not (exp adolescent/ or exp adult/ or exp

	middle age/ or exp aged/)
7.	5 not 6
8.	letter.pt. or letter/
9.	note.pt.
10.	editorial.pt.
11.	case report/ or case study/
12.	(letter or comment*).ti.
13.	or/8-12
14.	randomized controlled trial/ or random*.ti,ab.
15.	13 not 14
16.	animal/ not human/
17.	nonhuman/
18.	exp Animal Experiment/
19.	exp Experimental Animal/
20.	animal model/
21.	exp Rodent/
22.	(rat or rats or mouse or mice).ti.
23.	or/15-22
24.	7 not 23
25.	Health Status Indicator/
26.	(POSSUM or "Physiological and Operative Severity Score").ti,ab.
27.	SORT.ti,ab.
28.	"Surgical Outcome Risk Tool".ti,ab.
29.	((risk* or predict* or prognos*) adj2 (tool* or rule* or index* or indices or score* or scoring or scale* or model* or system* or algorithm* or stratif* or criteria or calculat*).ti,ab.
30.	or/25-29
31.	24 and 30

1

Cochrane Library (Wiley) search terms

#1.	MeSH descriptor: [Preoperative Care] this term only
#2.	MeSH descriptor: [Preoperative Period] this term only
#3.	MeSH descriptor: [Perioperative Nursing] this term only
#4.	(pre-operative* or preoperative* or preop* or pre-op* or pre-surg* or presurg*):ti,ab
#5.	(before or prior or advance) near/3 (surg* or operat* or anaesthes* or anesthes*):ti,ab
#6.	(or #1-#5)
#7.	MeSH descriptor: [Decision Support Techniques] this term only
#8.	MeSH descriptor: [Health Status Indicators] this term only
#9.	(POSSUM or "Physiological and Operative Severity Score"):ti,ab
#10.	SORT:ti,ab
#11.	"Surgical Outcome Risk Tool":ti,ab
#12.	((risk* or predict* or prognos*) near/2 (tool* or rule* or index* or indices or score* or scoring or scale* or model* or system* or algorithm* or stratif* or criteria or calculat*):ti,ab
#13.	(or #7-#12)
#14.	#6 and #13

1 B.2 Health Economics literature search strategy

2 Health economic evidence was identified by conducting a broad search relating to the
3 perioperative care population in NHS Economic Evaluation Database (NHS EED – this
4 ceased to be updated after March 2015) and the Health Technology Assessment database
5 (HTA) with no date restrictions. NHS EED and HTA databases are hosted by the Centre for
6 Research and Dissemination (CRD). Additional health economics searches were run on
7 Medline and Embase.

8 **Table 7: Database date parameters and filters used**

Database	Dates searched	Search filter used
Medline	2014 – 30 May 2019	Exclusions Health economics studies
Embase	2014 – 30 May 2019	Exclusions Health economics studies
Centre for Research and Dissemination (CRD)	HTA - Inception – 02 May 2019 NHSEED - Inception to 02 May 2019	None

9 **Medline (Ovid) search terms**

1.	exp Preoperative Care/ or exp Perioperative Care/ or exp Perioperative Period/ or exp Perioperative Nursing/
2.	((pre-operative* or preoperative* or preop* or pre-op* or pre-surg* or presurg*) adj3 (care* or caring or treat* or nurs* or monitor* or recover* or medicine)).ti,ab.
3.	((perioperative* or peri-operative* or intraoperative* or intra-operative* or intrasurg* or intra-surg* or peroperat* or per-operat*) adj3 (care* or caring or treat* or nurs* or monitor* or recover* or medicine)).ti,ab.
4.	((postoperative* or postop* or post-op* or post-surg* or postsurg*) adj3 (care* or caring or treat* or nurs* or monitor* or recover* or medicine)).ti,ab.
5.	((care* or caring or treat* or nurs* or recover* or monitor*) adj3 (before or prior or advance or during or after) adj3 (surg* or operat* or anaesthes* or anesthes*)).ti,ab.
6.	1 or 2 or 3 or 4 or 5
7.	(intraoperative* or intra-operative* or intrasurg* or intra-surg* or peroperat* or per-operat* or perioperat* or peri-operat*).ti,ab.
8.	((during or duration) adj3 (surg* or operat* or anaesthes* or anesthes*)).ti,ab.
9.	7 or 8
10.	postoperative care/ or exp Postoperative Period/ or exp Perioperative nursing/
11.	(postop* or post-op* or post-surg* or postsurg* or perioperat* or peri-operat*).ti,ab.
12.	(after adj3 (surg* or operat* or anaesthes* or anesthes*)).ti,ab.
13.	(post adj3 (operat* or anaesthes* or anesthes*)).ti,ab.
14.	10 or 11 or 12 or 13
15.	exp Preoperative Care/ or Preoperative Period/
16.	(pre-operat* or preoperat* or pre-surg* or presurg*).ti,ab.
17.	((before or prior or advance or pre or prepar*) adj3 (surg* or operat* or anaesthes* or anesthes*)).ti,ab.
18.	15 or 16 or 17
19.	6 or 9 or 14 or 18
20.	letter/
21.	editorial/

22.	news/
23.	exp historical article/
24.	Anecdotes as Topic/
25.	comment/
26.	case report/
27.	(letter or comment*).ti.
28.	or/20-27
29.	randomized controlled trial/ or random*.ti,ab.
30.	28 not 29
31.	animals/ not humans/
32.	exp Animals, Laboratory/
33.	exp Animal Experimentation/
34.	exp Models, Animal/
35.	exp Rodentia/
36.	(rat or rats or mouse or mice).ti.
37.	or/30-36
38.	19 not 37
39.	limit 38 to English language
40.	(exp child/ or exp pediatrics/ or exp infant/) not (exp adolescent/ or exp adult/ or exp middle age/ or exp aged/)
41.	39 not 40
42.	economics/
43.	value of life/
44.	exp "costs and cost analysis"/
45.	exp Economics, Hospital/
46.	exp Economics, medical/
47.	Economics, nursing/
48.	economics, pharmaceutical/
49.	exp "Fees and Charges"/
50.	exp budgets/
51.	budget*.ti,ab.
52.	cost*.ti.
53.	(economic* or pharmaco?economic*).ti.
54.	(price* or pricing*).ti,ab.
55.	(cost* adj2 (effectiv* or utilit* or benefit* or minimi* or unit* or estimat* or variable*)).ab.
56.	(financ* or fee or fees).ti,ab.
57.	(value adj2 (money or monetary)).ti,ab.
58.	or/42-57
59.	41 and 58

1

Embase (Ovid) search terms

1.	*preoperative period/ or *intraoperative period/ or *postoperative period/ or *perioperative nursing/ or *surgical patient/
2.	((pre-operative* or preoperative* or preop* or pre-op* or pre-surg* or presurg*) adj3 (care* or caring or treat* or nurs* or monitor* or recover* or medicine)).ti,ab.
3.	((perioperative* or peri-operative* or intraoperative* or intra-operative* or intrasurg* or intra-surg* or peroperat* or per-operat*) adj3 (care* or caring or treat* or nurs* or

	monitor* or recover* or medicine)).ti,ab.
4.	((care* or caring or treat* or nurs* or recover* or monitor*) adj3 (before or prior or advance or during or after) adj3 (surg* or operat* or anaesthes* or anesthes*)).ti,ab.
5.	1 or 2 or 3 or 4
6.	peroperative care/ or exp peroperative care/ or exp perioperative nursing/
7.	(intraoperative* or intra-operative* or intrasurg* or intra-surg* or peroperat* or per-operat* or perioperat* or peri-operat*).ti,ab.
8.	((during or duration) adj3 (surg* or operat* or anaesthes* or anesthes*)).ti,ab.
9.	6 or 7 or 8
10.	postoperative care/ or exp postoperative period/ or perioperative nursing/
11.	(postop* or post-op* or post-surg* or postsurg* or perioperat* or peri-operat*).ti,ab.
12.	(after adj3 (surg* or operat* or anaesthes* or anesthes*)).ti,ab.
13.	(post adj3 (operat* or anaesthes* or anesthes*)).ti,ab.
14.	10 or 11 or 12 or 13
15.	exp preoperative care/ or preoperative period/
16.	(pre-operat* or preoperat* or pre-surg* or presurg*).ti,ab.
17.	((before or prior or advance or pre or prepar*) adj3 (surg* or operat* or anaesthes* or anesthes*)).ti,ab.
18.	15 or 16 or 17
19.	5 or 9 or 14 or 18
20.	letter.pt. or letter/
21.	note.pt.
22.	editorial.pt.
23.	case report/ or case study/
24.	(letter or comment*).ti.
25.	or/20-24
26.	randomized controlled trial/ or random*.ti,ab.
27.	25 not 26
28.	animal/ not human/
29.	nonhuman/
30.	exp Animal Experiment/
31.	exp Experimental Animal/
32.	animal model/
33.	exp Rodent/
34.	(rat or rats or mouse or mice).ti.
35.	or/27-34
36.	19 not 35
37.	limit 36 to English language
38.	(exp child/ or exp pediatrics/) not (exp adult/ or exp adolescent/)
39.	37 not 38
40.	health economics/
41.	exp economic evaluation/

42.	exp health care cost/
43.	exp fee/
44.	budget/
45.	funding/
46.	budget*.ti,ab.
47.	cost*.ti.
48.	(economic* or pharmaco?economic*).ti.
49.	(price* or pricing*).ti,ab.
50.	(cost* adj2 (effectiv* or utilit* or benefit* or minimi* or unit* or estimat* or variable*)).ab.
51.	(financ* or fee or fees).ti,ab.
52.	(value adj2 (money or monetary)).ti,ab.
53.	or/40-52
54.	39 and 53

1

NHS EED and HTA (CRD) search terms

#1.	MeSH DESCRIPTOR Preoperative Care EXPLODE ALL TREES
#2.	MeSH DESCRIPTOR Perioperative Care EXPLODE ALL TREES
#3.	MeSH DESCRIPTOR Perioperative Period EXPLODE ALL TREES
#4.	MeSH DESCRIPTOR Perioperative Nursing EXPLODE ALL TREES
#5.	(((perioperative* or peri-operative* or intraoperative* or intra-operative* or intrasurg* or intra-surg* or peroperat* or per-operat*) adj3 (care* or caring or treat* or nurs* or monitor* or recover* or medicine)))
#6.	(((care* or caring or treat* or nurs* or recover* or monitor*) adj3 (before or prior or advance or during or after) adj3 (surg* or operat* or anaesthes* or anesthes*)))
#7.	(((pre-operative* or preoperative* or preop* or pre-op* or pre-surg* or presurg*) adj3 (care* or caring or treat* or nurs* or monitor* or recover* or medicine)))
#8.	(((postoperative* or postop* or post-op* or post-surg* or postsurg*) adj3 (care* or caring or treat* or nurs* or monitor* or recover* or medicine)))
#9.	#1 OR #2 OR #3 OR #4 OR #5 OR #6 OR #7 OR #8
#10.	(* IN HTA)
#11.	(* IN NHSEED)
#12.	#9 AND #10
#13.	#9 AND #11
#14.	MeSH DESCRIPTOR Intraoperative Care EXPLODE ALL TREES
#15.	#1 OR #2 OR #3 OR #4 OR #14
#16.	((intraoperative* or intra-operative* or intrasurg* or intra-surg* or peroperat* or per-operat* or perioperat* or peri-operat*))
#17.	(((during or duration) adj3 (surg* or operat* or anaesthes* or anesthes*)))
#18.	((postop* or post-op* or post-surg* or postsurg* or perioperat* or peri-operat*))
#19.	((after adj3 (surg* or operat* or anaesthes* or anesthes*)))
#20.	((post adj3 (operat* or anaesthes* or anesthes*)))
#21.	((pre-operat* or preoperat* or pre-surg* or presurg*))
#22.	(((before or prior or advance or pre or prepar*) adj3 (surg* or operat* or anaesthes* or anesthes*)))
#23.	#15 OR #16 OR #17 OR #18 OR #19 OR #20 OR #21 OR #22
#24.	#10 AND #23

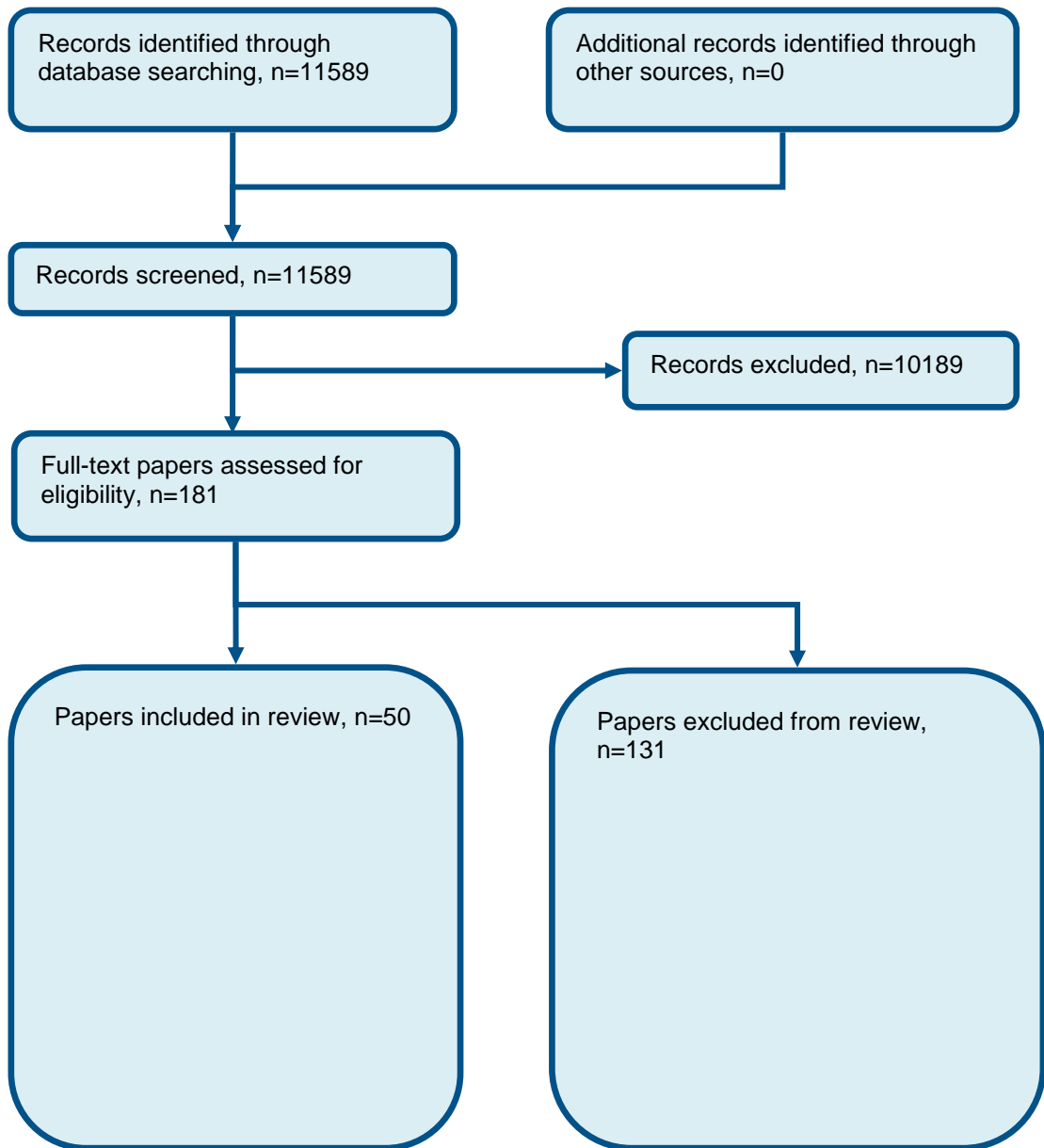
#25.	#11 AND #23
#26.	#12 OR #13 OR #24 OR #25

1
2

1

Appendix C: Clinical evidence selection

Figure 1: Flow chart of clinical study selection for the review of risk tools



2

3

Appendix D: Clinical evidence tables

Reference	Baker 2018 ¹¹
Study type	Prospective Cohort study
Study sample	Patients were prospectively enrolled from March 2014-2015 and eligible if they were undergoing an abdominal operation
Inclusion criteria	298 patients deemed eligible by their surgical oncologist as an appropriate surgical candidate, and the operation was planned under GA with entry into the Peritoneum.
Exclusion criteria	Patients excluded if they underwent an emergent operation
Risk tools	ACS NSQIP
Outcome	90 day morbidity
Results	ACS NSQIP any complication – OR = 1.042 (CI 1.030-1.116), P value = <0.0001, c-statistic = 0.6061

Reference	Bennett-Guerrero 2003 ¹⁴
Study type	Prospective Cohort study of risk prediction tool
Study sample	2 cohorts of patients undergoing major, non-cardiac surgery over the same time interval (August 1996 to June 1998). One cohort included patients undergoing surgery at the Mount Sinai Hospital, New York and the second cohort included patients undergoing surgery at the Queen Alexandra hospital and St Mary's hospital in Portsmouth.
Inclusion criteria	Patients undergoing major, non-cardiac surgery. USA (n=1056). UK (n=1539).
Exclusion criteria	None provided
Risk tools	P-POSSUM
Outcome	Mortality – in hospital mortality
Results	UK cohort - predicted mortality rate = 10.2%, observed mortality rate = 9.9 US cohort - predicted mortality rate = 7.8%, observed mortality rate = 2.1% UK cohort - predicted no. of deaths = 156, Observed number of deaths = 152 US cohort – predicted no. of deaths = 82, observed no. of deaths = 22

Reference	Blair 2018 ¹⁷
Study type	Retrospective review of cohort
Study sample	Retrospective review of a single institution, multi-surgeon, database of all patients undergoing PN for renal cell carcinoma from February 1998 to June 2015.
Inclusion criteria	470 Patients undergoing PN for renal cell carcinoma. 272 males and 198 women with a median age of 57 years
Exclusion criteria	Patients were excluded if complete records were not available and if the pathology of the tumor was determined to be anything other than RCC.
Risk tools	ACS NSQIP surgical risk calculator
Outcome	30 days overall complications and mortality
Results	Comparing predicted vs observed outcomes for all patients, the risk of overall complications were significantly under estimated (9.16% vs 16.81%, p<0.001) by the NSQIP. 95% CI = -7.65 (-7.07, -7.33). Mortality = (0.33 vs 0.21%, p<0.001) 95% CI = 0.12 (0.09-0.16).

Reference	Bodea 2018 ¹⁸
Study type	Retrospective cohort study
Study sample	Elective surgery patients at the Surgical Clinic no. 3 Cluj Romania between July 2013- December 2015.
Inclusion criteria	113 Participants undergoing elective Pancreaticoduodenectomy for periampullary malignant tumors. 64 males and 49 females, aged between 22-81 (median of 64).
Exclusion criteria	No exclusion criteria provided
Risk tools	P-POSSUM
Outcome	Mortality Morbidity
Results	The c-statistic was 0.61 for morbidity and 0.61 for mortality. Comparing the observed and estimated morbidity and mortality, statistical significant results (p=0.05 and p=0.03, respectively) Morbidity =ROC sensibility 0.65 [CI95% (0.562, 0.735)] and specificity 0.5 [CI95% (0.388, 0.606)]

Reference	Bonaventura 2019 ²⁰
Study type	Retrospective cohort study

Reference	Bonaventura 2019 ²⁰
Study sample	Patients undergoing cholecystectomy for acute cholecystitis at the surgery unit of Ospedale Policlinico San Martino hospital between 2005 and 2013.
Inclusion criteria	271 patients undergoing cholecystectomy for acute chloecystitis
Exclusion criteria	Patients who were younger than 18 were excluded
Risk tools	CCI ASA
Outcome	In hospital complications
Results	CCI in hospital complications – c-statistic = 0.662 (p= 0.0086) ASA in hospital complications – OR = 1.92 (CI 1.04-3.54) p=<0.001

Reference	Boyd 2019 ²²
Study type	Retrospective cohort study
Study sample	Records of patients who underwent pelvic reconstructive and incontinence surgery in a single tertiary centre from July 2014 to July 2017 were reviewed
Inclusion criteria	731 women patients 18 years or older undergoing surgery for pelvic organ prolapse or incontinence by all routes were included
Exclusion criteria	Non pelvic reconstructive procedures or procedures with same day hospital discharge were excluded.
Risk tools	ACS NSQIP risk calculator
Outcome	30 day Mortality
Results	NSQIP mortality – 0 event rate NSQIP any complication - C statistic = 0.547 (p 0.039), BS = 35.037
Comments	Women only and excluded all same day DC patients

Reference	Bronheim 2018 ²⁴
Study type	Retrospective review of cohort
Study sample	Retrospective review of ACS-NSQIP database from 2006 to 2014
Inclusion criteria	52,066 adult patients undergoing posterior lumbar decompression surgery
Exclusion criteria	None provided
Risk tools	ASA score

Reference	Bronheim 2018²⁴
Outcome	30 days mortality and morbidity
Results	c-statistic results as a predictor for any complication = 0.770 SE 0.023 (P= <0.001 CI= 0.726 - 0.815) c-statistic results as a predictor for mortality = 0.800 SE 0.002 (P= <0.001 CI= 0.796 - 0.804)

Reference	Bulow 2019²⁶
Study type	Retrospective review of cohort
Study sample	Retrospective review of patients from the Swedish Hip Arthroplasty register between 2005 and 2012
Inclusion criteria	43,224 patients treated with hip arthroplasty for a femoral neck fracture
Exclusion criteria	None provided
Risk tools	CCI
Outcome	30 and 90 days mortality and long term mortality – 1 year post op
Results	c-statistic 30 day mortality = 0.59 c-statistic 90 day mortality = 0.59 c-statistic 1 year mortality = 0.58

Reference	Cengiz 2014³¹
Study type	Retrospective cohort analysis of risk prediction tools
Study sample	335 consecutive patients undergoing colorectal cancer surgery between 2002 and 2012 in third-level healthcare centres. Male patients (n = 196) consisted 58.5% of all patients and 38.2% (n = 128) of all patients were over 70 years of age. Number of elective surgeries or curative resection was 279 (83.3%) or 265 (79.1%), respectively.
Inclusion criteria	Consecutive patients undergoing colorectal cancer surgery
Exclusion criteria	None provided
Risk tools	Possum P-possum ACPGBI scores
Outcome	Mortality within postoperative 30-days that extend the duration of hospital stay.
Results	Mortality and morbidity were observed in 17 and 109 patients, respectively. Mortality predictive scores:

Reference	Cengiz 2014³¹
	POSSUM: c-statistic = 89.7, 95% CI = 86.0-92.8, sensitivity = 88.2, specificity = 78.6. P-POSSUM: c-statistic = 90.4, 95% CI = 86.7-93.3, sensitivity = 94.1, specificity = 73.0 ACPGBI score: c-statistic = 78.1, 95% CI = 73.3-82.4, sensitivity = 76.5, specificity = 70.8

Reference	Chun 2018³²
Study type	Retrospective case control study
Study sample	Patients who had undergone surgery at a single tertiary care centre.
Inclusion criteria	217 patients who had undergone spinal surgery for various spine diseases. 103 men and 114 women with a mean age of 57.0 years.
Exclusion criteria	None included
Risk tools	E-PASS POSSUM
Outcome	Postoperative complications within 1 month after surgery
Results	The c-statistic for predicted post-operative complications was 0.588 for the E-PASS and 0.721 for the POSSUM.

Reference	Cologne 2015³⁶
Study type	Retrospective cohort study
Study sample	Consecutive laparoscopic colon resections performed on an elective basis from April 2011 through July 2014 by two colorectal surgeons at a tertiary referral centre
Inclusion criteria	116 patients were included if they were older than 18 years, if the procedure was performed by one of the 2 specified surgeons, if a preoperative ACS risk score was calculated and if completed postoperative medical records were available.
Exclusion criteria	None provided
Risk tools	ACS NSQIP risk calculator
Outcome	Mortality Any complication
Results	Observed vs predicted risk for any complication = (17.3% vs 19.4%, p=0.05), mortality = (1.07% vs 0.83%, p=0.86).

Reference	Dahlke 2014³⁸
------------------	---------------------------------

Reference	Dahlke 2014 ³⁸
Study type	Retrospective cohort analysis of risk prediction tools
Study sample	Data obtained from the ACS NSQIP participant file 2011 release for patients undergoing a broad range of surgeries across all surgical specialities.
Inclusion criteria	238,649 patients were included for analysis if they underwent a general surgery. 58.8% female with a median age of 54.1 years.
Exclusion criteria	None provided
Risk tools	ACS NSQIP – All information
Outcome	Overall Morbidity
Results	AUC/c-stastic for overall morbidity = 0.861

Reference	Dutta 2011 ⁴³
Study type	Retrospective cohort analysis of risk prediction tools
Study sample	121 Patients undergoing oesophago-gastric cancer resections in Glasgow Royal Infirmary from January 2005 to May 2009
Inclusion criteria	Patients undergoing oesophago-gastric curative cancer resections who had data to score the POSSUM, P-POSSUM, O-POSSUM, and mGPS models were included in the study
Exclusion criteria	None provided
Risk tools	Possum P-possum
Outcome	Mortality and Morbidity Both short term and long term survival were recorded
Results	Observed morbidity was 49%, whereas POSSUM predicted post-operative morbidity in 60%, giving an overall standardised morbidity ratio of 0.25 and 0.71. ROC analysis for the POSSUM morbidity equation (c-statistic 0.639, 95% CI 0.541–0.737, P = 0.008) ROC analysis for the P-POSSUM mortality equation gave c-statistic 0.808 (95% CI 0.55–1.06, P = 0.020), POSSUM (c-statistic 0.759, 95% CI 0.48–1.04, P = 0.051)

Reference	Egberts 2011 ⁴⁶
Study type	Retrospective cohort analysis of risk prediction tools
Study sample	The medical records of 191 patients undergoing surgery for IBD at the Department of General Surgery and Thoracic Surgery at the

Reference	Egberts 2011 ⁴⁶
	University Hospital of Kiel from 2004 to 2009 were analysed retrospectively. There were a total of 191 patients (81 male and 110 female) with a mean age of 38.1 years (range 5–75). There were 158 patients operated on for Crohn’s disease and 33 patients for UC
Inclusion criteria	Patients with a histologically proven MC or CU and an abdominal surgery were included.
Exclusion criteria	Patients who presented with a perianal affection and were treated with proctological techniques (seton drainage, fistula repair, etc.) without abdominal surgery were excluded from this study.
Risk tools	Possum
Outcome	Mortality Morbidity
Results	The overall complication rate was 27.7%, and the mortality was 0.5%. The morbidity rate predicted by POSSUM was 28.4% and the mortality rate 7.2%.

Reference	Egberts 2011 ⁴⁵
Study type	Retrospective cohort analysis of risk prediction tools
Study sample	The medical records of 143 patients with cutaneous melanoma who underwent a radical lymph node dissection (RLND) at the Department of General Surgery and Thoracic Surgery at the University Hospital of Kiel from 1985 to 2008 were analysed retrospectively. There were 143 patients (59 male, 84 female) with a mean age of 58.1 years (range: 20–89 years)
Inclusion criteria	Patients with cutaneous melanoma who underwent a radical lymph node dissection (RLND)
Exclusion criteria	None provided
Risk tools	Possum
Outcome	Mortality Morbidity
Results	The actual mortality rate was 0% whereas the rate estimated by POSSUM was 8.3%. The POSSUM (ie predicted) morbidity rate for all patients together was 32.9% and the observed morbidity for all patients was similar at 28.0%.

Reference	Filip 2014⁴⁹												
Study type	Retrospective cohort analysis of risk prediction tools												
Study sample	Patients diagnosed with oesophageal cancer in whom surgery was performed between January 2004 and March 2013												
Inclusion criteria	Patients diagnosed with oesophageal cancer in whom surgery was performed. Out of 137 patients diagnosed with oesophageal cancer, esophagectomy was performed in 43 cases.												
Exclusion criteria	Patients with unresectable tumours on laparotomy or thoracotomy or those with palliative surgery were excluded												
Risk tools	POSSUM Charlson Age adjusted Charlson ASA score												
Outcome	Mortality and Morbidity within 30 days after surgery												
Results	<p>Postoperative mortality (11.62%) was best predicted by POSSUM score (10.48; 95% CI 9.37 -11.66). The observed morbidity was 58.13%, higher than that expected by POSSUM (48.24%; 95%CI, 44.82-51.66) with a morbidity ratio O/E of 1.2.</p> <p>Expected mortality for P-POSSUM was 2.71 (95%CI, 2.31 - 3.12), O-POSSUM was 6.83 (95%CI, 6.21-7.25), whereas the observed mortality in our series was 11.62%, thus giving a mortality ratio observed/expected of 1.1 for POSSUM, 4.28 for P-POSSUM and 1.7 for O-POSSUM.</p> <p>The observed morbidity given was 58.13%, higher than that expected by the POSSUM (48.24%; 95%CI, 44.82 - 51.66) with a morbidity ratio O/E of 1.2.</p> <table border="0"> <tr> <td>c-statistic for morbidity</td> <td>p-value</td> </tr> <tr> <td>POSSUM score 0.826 (0.67-0.92)</td> <td>0.0001</td> </tr> <tr> <td>Physiological score 0.74 (0.58-0.86)</td> <td>0.0014</td> </tr> <tr> <td>Operative score 0.607 (0.44-0.75)</td> <td>0.21</td> </tr> <tr> <td>Charlson comorbidity index 0.608 (0.44-0.75)</td> <td>0.21</td> </tr> <tr> <td>Age adjusted Charlson index 0.736 (0.58-0.85)</td> <td>0.0018</td> </tr> </table>	c-statistic for morbidity	p-value	POSSUM score 0.826 (0.67-0.92)	0.0001	Physiological score 0.74 (0.58-0.86)	0.0014	Operative score 0.607 (0.44-0.75)	0.21	Charlson comorbidity index 0.608 (0.44-0.75)	0.21	Age adjusted Charlson index 0.736 (0.58-0.85)	0.0018
c-statistic for morbidity	p-value												
POSSUM score 0.826 (0.67-0.92)	0.0001												
Physiological score 0.74 (0.58-0.86)	0.0014												
Operative score 0.607 (0.44-0.75)	0.21												
Charlson comorbidity index 0.608 (0.44-0.75)	0.21												
Age adjusted Charlson index 0.736 (0.58-0.85)	0.0018												
Comments	Unclear what outcome is being predicted for c-statistic, presumed morbidity.												

Reference	Fu 2019⁵²
Study type	Retrospective chart review of ACS NSQIP
Study sample	Data from the ACS NSQIP from 2005 to 2015 was extracted
Inclusion criteria	10,527 patients who underwent total shoulder arthroplasty were identified in the NSQIP
Exclusion criteria	Cases missing age, sex, height, weight and those younger than 18 years old.

Reference	Fu 2019 ⁵²
Risk tools	ASA score Modified Charlston Comorbidity Index
Outcome	30 day postoperative adverse event
Results	ASA any adverse event – c-statistic = 0.607 (0.587 – 0.627) mCCI any adverse event - c-statistic = 0.555 (0.536 – 0.575)

Reference	Golan 2018 ⁵⁴
Study type	Retrospective cohort analysis of risk prediction tools
Study sample	Patients in prospectively maintained database who underwent open RC with either ileal conduit or orthotopic neobladder urinary diversion for bladder cancer between Jan 2007 and Dec 2016.
Inclusion criteria	954 patients undergoing radical cystectomy with uniary diversion Males = 752 and median age =70 (62-76)
Exclusion criteria	Patients who underwent a continent catheterisable uniry diversion were not included.
Risk tools	ACS NSQIP risk calculator
Outcome	Mortality and 30 days post-operative any complication
Results	Predicted vs observed any complication= 30.7% vs 40.3% and mortality = 1.3% vs 2.2%. Any complication c-statistic = 0.58 (p<0.001), mortality c-statistic = 0.62 (p=0.02).

Reference	Hirose 2014 ⁵⁷
Study type	Retrospective cohort analysis of risk prediction tools
Study sample	601 consecutive patients who underwent spinal surgery between January 2005 and December 2009 at Kumamoto University Hospital.
Inclusion criteria	Patients who underwent spinal surgery. The surgical procedures included laminoplasty and anterior fusion to treat cervical disorders (169 patients); posterior fusion for thoracic disorders (16 patients); laminectomy, posterior fusion, and discectomy for lumbar disorders (259 patients); resection of spinal tumors (117 patients); spinal fusion for scoliosis (27 patients); and curettage or spinal fusion for pyogenic spondylitis (13 patients). 327 were male and 274 were female, and their mean age was 58.7 years (range 7–88 years).
Exclusion criteria	None provided

Reference	Hirose 2014⁵⁷
Risk tools	POSSUM E-PASS
Outcome	Mortality and Morbidity
Results	The ROC curves of each model for the detection of postoperative complications were evaluated - the c-statistic of predicted morbidity rate (PMR) for E-PASS was 0.668 (95% CI 0.596–0.739) and higher than for POSSUM (0.588; 95% CI 0.513–0.663).

Reference	Hirose 2015⁵⁸
Study type	A single centre retrospective cohort study
Study sample	Retrospective review of 275 consecutive patients who underwent spinal surgery between Jan 2008 and Dec 2009 at Kumamoto University Hospital.
Inclusion criteria	275 patients undergoing spinal surgery. The same 4 surgeons performed the procedures. 146 male and 129 females, mean age was 59.7 years.
Exclusion criteria	None provided
Risk tools	E-PASS
Outcome	Total postoperative morbidities
Results	Total postoperative morbidities, c-statistic = 0.681

Reference	Hobson 2007⁶⁰
Study type	Prospective comparison study
Study sample	All patients undergoing surgery in the emergency theatre of the Leicester general hospital over a 4-month period from June to September 2003.
Inclusion criteria	163 patients undergoing surgery in the emergency theatre including general surgery, gynaecology, renal, urology and vascular.
Exclusion criteria	None provided
Risk tools	POSSUM P-POSSUM
Outcome	30 day mortality 60 day/in hospital mortality
Results	30 day mortality, c-statistic = POSSUM - 0.946, P-POSSUM - 0.940.

Reference	Hobson 2007⁶⁰
	In hospital Mortality, c-statistic = POSSUM – 0.932, P-POSSUM – 0.928.

Reference	Huisman 2014⁶⁴
Study type	Prospective cohort study
Study sample	Recruitment took place in 6 different countries at 11 medical centers between September 2008 and January 2012 and included 263 cancer patients scheduled for elective surgery
Inclusion criteria	A cohort of cancer patients aged 70 or over who were candidate for elective surgery under general anesthesia, were invited to take part by the local coordinator. The median age of this cohort was 76 years (Range: 70–96) and 66.5% of patients were female. The majority of surgical procedures were laparotomies (n = 156; 59.3%) and breast cancer surgeries (n = 76; 28.9%).
Exclusion criteria	Patients requiring emergency surgical management (within 24 hours) were excluded from this study. Medical centres that included less than 10 patients were excluded from analysis, which resulted in the analysis of 263 patients
Risk tools	Timed up and go ASA classification
Outcome	Mortality and 30 day morbidity
Results	In a univariable logistic regression analysis the TUG and ASA were not predictive of 30-day mortality. For morbidity - Sensitivity of a high TUG was 42.0% and specificity was 89.8%. The c-statistic was 0.66 (95%-CI = 0.57–0.75; p<0.001). Sensitivity of ASA ≥3 was 57.1% and specificity was 58.5%. The c-statistic was 0.58 (95%-CI = 0.49–0.67, p = 0.09).

Reference	Igari 2013⁶⁵
Study type	Retrospective cohort analysis of risk prediction tools
Study sample	Patients undergoing general surgical procedures at Ohta Nishinouchi General Hospital between April 2003 and March 2009
Inclusion criteria	593 Patients aged ≥80 years who underwent surgery under general anaesthesia. 287 male and 387 females, mean age 83 years.
Exclusion criteria	None provided
Risk tools	POSSUM P-POSSUM
Outcome	Postoperative morbidity and mortality within 30 days post operatively

Reference	Igari 2013⁶⁵
Results	POSSUM - Observed/expected morbidity ratio was 1.44 and mortality ratio was 0.98 P-POSSUM – the O/E ratio was 1.0.

Reference	Katlic 2019⁷²
Study type	Retrospective cohort study
Study sample	Patients aged ≥75 years who presented to Sinai Hospital of Baltimore for major elective surgery between September 2012 and July 2016
Inclusion criteria	1025 geriatric surgical patients undergoing major elective surgery including cardiac, thoracic, vascular, orthopaedic, surgical oncology, general surgery, urologic and neurologic.
Exclusion criteria	None provided
Risk tools	Charleston Comorbidity index ASA Score Fried's 5 point frailty score
Outcome	Any NSQIP complication
Results	Fried's 5 point frailty – c-statistic = 0.70 (p=0.680) ASA score – c-statistic = 0.70 (p=0.755) CCI – c-statistic = 0.64 (p=0.008)

Reference	Kim 2018⁷⁸
Study type	Retrospective cohort study
Study sample	The national inpatient sample from the USA was queried for patients who underwent a total shoulder arthroplasty or reverse total shoulder arthroplasty between 2002 and 2014
Inclusion criteria	90,491 patients undergoing total shoulder arthroplasty or reverse total shoulder arthroplasty
Exclusion criteria	None provided
Risk tools	Charlston comorbidity index
Outcome	Any inpatient complication and mortality
Results	CCI mortality – c-statistic = 0.827 (CI 0.774-0.88) CCI any complication – c-statistic = 0.691 (CI 0.680-0.703)

Reference	Kong 2013 ⁸²
Study type	Temporal validation of a prospective observational study and the external validation was a retrospective observational study
Study sample	Major colorectal operations performed at Geelong hospital and Western Hospital from 2008-2010
Inclusion criteria	474 major colorectal operations performed at Geelong hospital (temporal validation) and 389 cases at Western Hospital (external validation)
Exclusion criteria	Patients undergoing surgery for reversal of colostomy or ileostomy, diverting stoma formation, transanal endoscopic microsurgery, and laparotomy or laparoscopy with washout of peritoneal cavity.
Risk tools	POSSUM P-POSSUM ACPGBI
Outcome	Mortality
Results	<p>Temporal validation (of BH tool) dataset</p> <p>POSSUM: mortality c-statistic = 0.790 p=<0.001</p> <p>P-POSSUM: mortality c-statistic = 0.801 p=0.88</p> <p>ACPGBI: mortality c-statistic = 0.721 p= 0.006</p> <p>External validation (of BH tool) dataset</p> <p>POSSUM: mortality c-statistic = 0.696 p=<0.0001</p> <p>P-POSSUM: mortality c-statistic = 0.681 p=0.13</p> <p>ACPGBI: mortality c-statistic = 0.658 p=<0.0001</p>

Reference	Kwok 2011 ⁸⁷
Study type	Retrospective cohort
Study sample	Data from ACS NSQIP N=1730
Inclusion criteria	Very elderly patients aged 80+ undergoing emergency colon surgery
Exclusion criteria	Not reported
Risk tools	ASA Surgical risk scale

Reference	Kwok 2011⁸⁷									
Outcome	Mortality									
Results	Overall mortality was 489 (28%)									
	<table border="1"> <thead> <tr> <th>Tool</th> <th>C-statistic</th> <th>Goodness of fit (p value)</th> </tr> </thead> <tbody> <tr> <td>ASA</td> <td>0.66</td> <td>0.14</td> </tr> <tr> <td>Surgical risk scale</td> <td>0.66</td> <td>0.14</td> </tr> </tbody> </table>	Tool	C-statistic	Goodness of fit (p value)	ASA	0.66	0.14	Surgical risk scale	0.66	0.14
Tool	C-statistic	Goodness of fit (p value)								
ASA	0.66	0.14								
Surgical risk scale	0.66	0.14								

Reference	Lakomkin 2018⁸⁸
Study type	Retrospective chart review of ACS NSQIP
Study sample	Data from ACA NSQIP from 2008 to 2014
Inclusion criteria	2,170 patients undergoing spinal tumor resection
Exclusion criteria	None provided
Risk tools	ASA score Modified Charlston Comorbidity Index
Outcome	30 day Mortality
Results	ASA – mortality – ‘not predictive of any adverse event’ CCI – mortality OR = 1.24 (CI= 1.12 – 1.36) P value= <0.001, c-statistic = 0.860

Reference	Lima 2019⁹⁵
Study type	Prospective observational study
Study sample	Patients scheduled to undergo elective surgery during a 3 month period at a University hospital
Inclusion criteria	235 patients over 60 years old scheduled to undergo elective procedures under general, regional or combined anaesthesia for general, gynaecological, plastic, vascular, or orthopaedic surgeries at a university hospital were enrolled.
Exclusion criteria	Patients who were admitted to ICU immediately after surgery, submitted to emergency or urgent surgery procedures, unable to speak or understand the Portuguese language or incapable of signing the informed consent were excluded.
Risk tools	P-POSSUM
Outcome	30 day Mortality
Results	P-POSSUM 30 day mortality AUROC = 0.563

Reference	Ngulube 2019¹¹⁰
	P-POSSUM
Outcome	Mortality Morbidity
Results	c-statistic for POSSUM morbidity = 0.775 (p<0.0001). O:E ratio = 0.88 c-statistic for POSSUM mortality = 0.818 (p=0.818). O:E ratio = 0.74 c-statistic for P-POSSUM mortality = 0.814 (p<0.000) O:E ratio = 1.06

Reference	Reis 2019¹²⁸
Study type	Retrospective cohort study
Study sample	All patients admitted to surgical ICU after open vascular surgery from January 2006 to July 2013 in a large academic hospital.
Inclusion criteria	833 patients admitted to surgical ICU after open vascular surgery from January 2006 to July 2013
Exclusion criteria	None provided
Risk tools	POSSUM
Outcome	Hospital mortality
Results	POSSUM hospital mortality – observed/expected ration of 0.98 (43/44) and AUROC = (0.829)

Reference	Rivard 2016¹²⁹						
Study type	Retrospective chart review						
Study sample	Patients who underwent laparotomy on the gynecologic oncology service at a single academic hospital from January 2009 to December 2013. N=1094						
Inclusion criteria	Patients undergoing laparotomy						
Exclusion criteria	Not reported						
Risk tools	NSQIP						
Outcome	Mortality Complications						
Results							
	<table style="width: 100%; border-collapse: collapse;"> <tr> <td style="width: 25%;"></td> <td style="width: 25%; text-align: center;">Outcome</td> <td style="width: 25%; text-align: center;">Event rate (%)</td> <td style="width: 25%; text-align: center;">Odds ratio (95%CI)</td> <td style="width: 25%; text-align: center;">C-statistic</td> <td style="width: 25%; text-align: center;">Bier score</td> </tr> </table>		Outcome	Event rate (%)	Odds ratio (95%CI)	C-statistic	Bier score
	Outcome	Event rate (%)	Odds ratio (95%CI)	C-statistic	Bier score		

Reference	Rivard 2016 ¹²⁹				
	Mortality	9 (0.8)	1.18 (1.08-1.29)	0.851	0.007
	Any complication	368 (33.6)	1.06 (1.04-1.08)	0.635	0.323
Comments	Low overall mortality event rate.				

Reference	Saafan 2019 ¹³³
Study type	Retrospective chart review
Study sample	Retrospective chart review of all perforated duodenal ulcer patients at Hamad general hospital (Doha) and Alwakra hospital in Qatar using the hospitals administrative electronic database between January 2014 and December 2017.
Inclusion criteria	152 patients presenting to ER and diagnosed and operated for perforated duodenal ulcers
Exclusion criteria	Patients < 14 years old or with perforated other organs were excluded
Risk tools	ASA score (≥ 3)
Outcome	30 day post op morbidity
Results	ASA 30 day morbidity – c-statistic =0.69 (0.55–0.83), p=0.009, sensitivity = 58.82% (36.01–78.39) and Specificity = 75.56 (67.66–82.03)
Comments	Male patients only and includes patients over 14 years old. Low risk of bias

Reference	Shaker 2019 ¹⁴⁰
Study type	Retrospective review of cohort
Study sample	Retrospective review ACS NSQIP database from 2009 to 2013
Inclusion criteria	200 gynaecologic oncology patients 70+ years older undergoing laparotomy.
Exclusion criteria	None provided
Risk tools	ACS NSQIP surgical risk calculator
Outcome	30 days any complications and mortality
Results	Mortality = OR 1.12 (1.01-1.25), P value= 0.03, C statistic = 0.811, Brier score = 0.015 Any complication = OR 1.06(1.02 – 1.09), P value = 0.003, C statistic = 0.652, Brier score = 0.237
Comments	Female patients only of 70+ years old

Reference	Sharrock 2017 ¹⁴²			
Study type	Retrospective cohort study			
Study sample	Consecutive hospital admissions were recorded between 02 January 2014 and 25 August 2015. N=193			
Inclusion criteria	Patients were eligible if they were aged 70 or over when admitted as an emergency for abdominal surgery.			
Exclusion criteria	Not reported			
Risk tools	P-POSSUM ASA			
Outcome	Mortality			
Results	Mortality			
	Outcome	Correlation	c-statistic	P value
	P-POSSUM			
	Correlation with days to death	-0.28		0.21
	Mortality ASA		0.784	<0.001
Mortality		0.771	<0.001	

Reference	Simpson 2018 ¹⁴⁶			
Study type	Retrospective review of cohort			
Study sample	Retrospective review of the National Emergency Laparotomy Database between January 2014 to September 2016			
Inclusion criteria	103 patients over 80 years old undergoing emergency laparotomy			
Exclusion criteria	None provided			
Risk tools	P-POSSUM			
Outcome	Inpatient, 30 day and 90 day mortality			
Results	Inpatient mortality = c-statistic 0.51, 30 day mortality = c-statistic 0.75, 90 day mortality c-statistic = 0.75			
Comments	Patients over 80 years old.			

Reference	Slim 2006 ¹⁴⁸			
-----------	--------------------------	--	--	--

Reference	Slim 2006 ¹⁴⁸			
Study type	Prospective cohort study			
Study sample	Patients operated on for colorectal malignant or diverticular diseases, whether electively or on emergency basis, within a 4-month period. N=1421			
Inclusion criteria	Patients undergoing open or laparoscopic surgery (electively or on emergent basis) for colorectal cancers or diverticular disease.			
Exclusion criteria	Inflammatory bowel diseases or benign polyps, because both of those conditions require specific management, and other rare colorectal diseases (volvulus, chronic constipation, etc) because they involve specific therapeutic aspects.			
Risk tools	POSSUM P-POSSUM			
Outcome	Mortality			
Results	Mortality			
	Outcome	Predicted %	Observed % (95% CI)	c-statistic
	POSSUM	11.3	3.4 (2.5-4.44)	n/a
	P-POSSUM	4.7		0.82

Reference	Suresh 2019 ¹⁵²			
Study type	Retrospective chart review study			
Study sample	All patients undergoing panniculectomy procedure at Duke University Hospital from 2005 to 2016			
Inclusion criteria	264 patients who underwent panniculectomy from 2005 – 2016 were included			
Exclusion criteria	None provided			
Risk tools	NSQIP risk calculator			
Outcome	30 day post-operative any complications			
Results	NSQIP risk calculator any complication – c-statistic =0.6193			

Reference	Teeuwen 2011 ¹⁵⁵			
Study type	Retrospective case-control study			
Study sample	Patients older than 15 years undergoing colorectal resection between January 2003 and January 2008 in the Radboud University Nijmegen Medical Centre.			

Reference	Teeuwen 2011 ¹⁵⁵		
	N=734		
Inclusion criteria	Not reported		
Exclusion criteria	Not reported		
Risk tools	POSSUM P-POSSUM		
Outcome	Mortality Morbidity		
Results	<hr/>		
	Outcome	Predicted %	Observed %
	<hr/>		
	Mortality		
	POSSUM	17	8.9
P-POSSUM	5.9		
Morbidity			
POSSUM	46	39.4	

Reference	Teoh 2017 ¹⁵⁶			
Study type	A retrospective chart review			
Study sample	All patients undergoing minimally invasive surgery on the gynecologic oncology service from January 1, 2009, to December 30, 2013. N=876			
Inclusion criteria	Gynaecology oncology patients undergoing minimally invasive surgery			
Exclusion criteria	Not reported			
Risk tools	ACS NSQIP			
Outcome	Mortality Any complication			
Results	<hr/>			
	Outcome	Event rate (%)	Odds ratio (95%CI)	C-statistic
	Mortality	0	n/a	n/a

Reference	Teoh 2017 ¹⁵⁶			
	Any complication	100 (11.4)	1.08 (0.99-1.18)	0.57

Reference	Tominaga 2016 ¹⁶⁰										
Study type	Retrospective cohort										
Study sample	Between January 2009 and August 2013, patients diagnosed with colorectal cancer and underwent curative colorectal resection at the Department of Surgical Oncology of Nagasaki University Graduate School of Biological Sciences. N=239										
Inclusion criteria	Patients over 70 years of age diagnosed with colorectal cancer and underwent curative colorectal resection										
Exclusion criteria	Not reported										
Risk tools	E-PASS										
Outcome	Mortality (Survival)										
Results	<table border="1"> <thead> <tr> <th>E-PASS score</th> <th>Survival (%)</th> <th>P value</th> </tr> </thead> <tbody> <tr> <td><0.2</td> <td>82.9</td> <td rowspan="2"><0.001</td> </tr> <tr> <td>≥0.2</td> <td>54.9</td> </tr> </tbody> </table>			E-PASS score	Survival (%)	P value	<0.2	82.9	<0.001	≥0.2	54.9
	E-PASS score	Survival (%)	P value								
	<0.2	82.9	<0.001								
≥0.2	54.9										

Reference	Tran Ba Loc 2010 ¹⁶¹		
Study type	Retrospective cohort study		
Study sample	From 2002 to 2004, elderly patients undergoing major colorectal surgery in France were enrolled. N=1186		
Inclusion criteria	Patients, at least 65 years old, undergoing major colorectal surgery.		
Exclusion criteria	Patients without POSSUM or follow-up data		
Risk tools	POSSUM P-POSSUM Surgical risk score		
Outcome	Mortality Morbidity		
Results			

Reference	Tran Ba Loc 2010 ¹⁶¹			
	Outcome	O/E ratio	P value*	c-statistic (95% CI)
	Morbidity			
	POSSUM	1.22	0.001	0.75 (0.70, 0.80)
	Mortality			
	P-POSSUM	1.23	0.584	0.86 (0.81, 0.92)
	SRS	1.08	0.3	0.78 (0.70, 0.86)

Reference	Vather 2006 ¹⁶⁷		
Study type	Retrospective cohort study		
Study sample	Consecutive patients undergoing a major colorectal operation between January 2002 and October 2005 at the participating hospital. N=308		
Inclusion criteria	Patients undergoing a major colorectal operation		
Exclusion criteria	Patients with incomplete data		
Risk tools	POSSUM P-POSSUM		
Outcome	Mortality		
Results			
	Outcome	c-statistic	SE
	POSSUM	0.789	0.068
	P-POSSUM	0.786	0.068

Reference	Wang 2014 ¹⁶⁹		
Study type	Retrospective cohort		
Study sample	Consecutive patients treated surgically in the study centre following a diagnosis of hilar cholangiocarcinoma. N=100		
Inclusion criteria	Only patients with histologically confirmed cholangiocarcinoma were included.		
Exclusion criteria	Patients who underwent liver transplantation were not included in this study		

Reference	Wang 2014 ¹⁶⁹			
Risk tools	POSSUM P-POSSUM E-PASS			
Outcome	Mortality Morbidity			
Results	Outcome	O/E ratio	P value*	c-statistic
	Morbidity			
	POSSUM	1.00 (52/52)	0.488	0.843 (0.768-0.919)
	Mortality			
	POSSUM	1.11 (10/9)	0.520	0.863 (0.766-0.961)
	P-POSSUM	1.00 (10/10)	0.721	0.848 (0.740-0.956)
	E-PASS	1.00 (10/10)	0.671	0.842 (0.735-0.949)
* Goodness of fit				

Reference	Wang 2017 ¹⁷²		
Study type	Retrospective cohort		
Study sample	Geriatric patients who underwent lumbar surgery between January 2014 and December 2016 N=242		
Inclusion criteria	Elderly patients (age>60 years) with isolated spinal stenosis who underwent conventional laminectomy without fusion.		
Exclusion criteria	Age <60 y Lumbar spondylolisthesis Not treated with conservative therapy for 3 mo Glasgow Coma scale score <3. Conventional decompressive laminectomy with fusion.		
Risk tools	ACS-NSQIP		
Outcome	Mortality Any complication		
Results	c-statistic:		
	Outcome	Event rate (%)	C-statistic (95% CI)
	Mortality	2 (0.8)	0.972 (0.929, 1.000)

Reference	Wang 2017¹⁷²	
	Any complication	106 (43.8) 0.683 (0.615,0.751)

Reference	Wani 2005¹⁷³	
Study type	Retrospective cohort study	
Study sample	Patients of diagnosed calcular disease of biliary tract over an 18 month period. N=500	
Inclusion criteria	The types of surgeries performed were categorized into three groups : TYPE-I: Cholecystectomy/ Cholecystostomy only. TYPE.II: Cholecystectomy with CBD exploration with T tube drainage, TYPE-III: Cholecystectomy with papillotomy/sphincteropeasty/choledochoduodenostomy or choledocho jujenostomy.	
Exclusion criteria	All the operations performed were open procedures and no laparoscopic operation is included.	
Risk tools	POSSUM scoring system	
Outcome	Morbidity Mortality	
Results	Predictive accuracy	
	Outcome	Sensitivity Specificity
	Mortality	62% 94%
	Morbidity	60% 99%
	Correlation	
	Predicted rate (%)	Observed rate Mortality (%) Morbidity (%)
	80	96 99
	70	84 87
	60	72 74
	50	60 62
40	48 50	
30	36 37	

Reference	Wani 2005 ¹⁷³		
	20	24	25
	10	12	12
Correlation between predicted and observed rates is significant, p<0.05			

Reference	Wolters 2006 ¹⁷⁶															
Study type	Prospective cohort study															
Study sample	From May 1996 to June 2000, patients meeting the inclusion criteria were included for analysis. N=107															
Inclusion criteria	patients received an aorto-bi-iliac or an aorto-bifemoral graft due to arterial occlusive disease															
Exclusion criteria	Not reported.															
Risk tools	POSSUM ASA															
Outcome	Mortality Morbidity															
Results	<table border="1" style="width: 100%; border-collapse: collapse;"> <thead> <tr> <th style="width: 70%;">Outcome</th> <th>c-statistic</th> </tr> </thead> <tbody> <tr> <td>Morbidity</td> <td></td> </tr> <tr> <td> POSSUM</td> <td>0.561</td> </tr> <tr> <td> ASA</td> <td>0.518</td> </tr> <tr> <td>Mortality</td> <td></td> </tr> <tr> <td> POSSUM</td> <td>0.471</td> </tr> <tr> <td> ASA</td> <td>0.590</td> </tr> </tbody> </table>		Outcome	c-statistic	Morbidity		POSSUM	0.561	ASA	0.518	Mortality		POSSUM	0.471	ASA	0.590
	Outcome	c-statistic														
	Morbidity															
	POSSUM	0.561														
	ASA	0.518														
	Mortality															
POSSUM	0.471															
ASA	0.590															

Reference	Yap 2018 ¹⁷⁷
Study type	Single-centre prospective validation cohort study.
Study sample	Patients admitted to St Luke's Medical Center-Quezon City from January 2016 to March 2017. N=424

Reference	Yap 2018 ¹⁷⁷		
Inclusion criteria	<p>Patients aged 19 years and older admitted for preoperative evaluation and cardiopulmonary risk stratification before non-cardiac surgery.</p> <p>Surgeries eligible for inclusion included open, laparoscopic and percutaneous abdominal surgeries, anorectal surgeries, breast surgeries, thyroid surgeries, head and neck surgeries, orthopaedic surgeries, urologic surgeries, excision and incision biopsies of superficial masses, wound debridement, vascular surgeries, and neurosurgical procedures.</p>		
Exclusion criteria	Ophthalmologic and endoscopic procedures were excluded.		
Risk tools	ACS NSQIP risk calculator		
Outcome	Mortality Morbidity		
Results			
	Outcome	Total events	c-statistic
	Mortality	12 (3%)	0.89
	Morbidity	60 (14%)	0.88

Reference	Zattoni 2019 ¹⁷⁹
Study type	Prospective observational study
Study sample	All patients 70 years or older consecutively admitted to the emergency unit with an urgent need for abdominal surgery between December 2-15 and May 2016
Inclusion criteria	110 patients over 70 years old undergoing emergency abdominal surgery under general anaesthesia were enrolled
Exclusion criteria	Patients who underwent only medical management or who were operated on for vascular, thoracic, gynaecological or urological conditions were excluded
Risk tools	Age adjusted CCI ASA score
Outcome	30 day mortality
Results	<p>Age adjusted CCI ≥ 6 30 day mortality – sensitivity = 95.2% (76.2-99.9), specificity = 48.3% (37.6-59.2) c-statistic = 71.8</p> <p>ASA ≥ 4 30 day mortality - sensitivity = 57.1% (34-78.2), specificity = 82% (72.5-89.4) c-statistic = 69.6</p> <p>Age adjusted CCI ≥ 6 90 day mortality – sensitivity = 96% (79.6-99.9), specificity = 50.6% (39.5-61.6) c-statistic = 73.3</p> <p>ASA ≥ 4 90 day mortality - sensitivity = 52% (31.3-72.2), specificity = 82.4% (72.6-89.8) c-statistic = 67.2</p>

Appendix E: PROBAST checklist

Study	Appropriate data sources?	Appropriate inc and exc?	Similar health across participants?	Predictors defined/ass'd same for all?	Predictor assessments made without knowledge of outcome data?	Predictors all available at time model meant to be used?	All relevant predictors analysed?	Pre-specified outcome used?	Predictors excluded from outcome definition?	Outcome defined in same way for all?	Outcome determined without knowledge of predictor information?	Reasonable number of outcome events?	Time interval between baseline and outcome appropriate?	All enrolled included in analysis?	Missing data handled appropriately?	Non-binary predictors handled appropriately?	Complexities in data accounted for?	Relevant performance measures?	Model recalibrated or likely that calibration not needed?	Overall rating
Baker 2018 ¹¹	Y	Y	Y	Y	Y	Y	Y	Y	Y	Y	Y	N	Y	Y	Y	n/a	Y	Y	Y	Serious
Bennett-Guerrero 2003 ¹⁴	Y	Y	Y	Y	Y	Y	Y	Y	Y	Y	Y	Y	U	Y	n/a	n/a	Y	Y	Y	Low
Blair 2018 ¹⁷	Y	Y	Y	Y	U	Y	Y	Y	Y	Y	U	Y	Y	Y	n/a	n/a	Y	Y	Y	Serious
Bodea 2018 ¹⁸	Y	Y	Y	Y	U	Y	Y	Y	Y	Y	Y	Y	U	Y	n/a	n/a	Y	Y	Y	Serious
Bonventura 2019 ²⁰	Y	Y	Y	Y	U	Y	Y	Y	Y	Y	Y	Y	U	Y	n/a	n/a	Y	Y	Y	Serious

	Overall rating
Model recalibrated or likely that calibration not needed?	Y
Relevant performance measures?	Y
Complexities in data accounted for?	n/a
Non-binary predictors handled appropriately?	n/a
Missing data handled appropriately?	U
All enrolled included in analysis?	U
Time interval between baseline and outcome appropriate?	U
Reasonable number of outcome events?	Y
Outcome determined without knowledge of predictor information?	Y
Outcome defined in same way for all?	Y
Predictors excluded from outcome definition?	Y
Pre-specified outcome used?	Y
All relevant predictors analysed?	Y
Predictors all available at time model meant to be used?	Y
Predictor assessments made without knowledge of outcome data?	U
Predictors defined/ass'd same for all?	Y
Similar health across participants?	Y
Appropriate inc and exc?	Y
Appropriate data sources?	Y
Study	
Boyd 2019 ²²	Y
Bronheim 2018 ²⁴	Y
Bulow 2019 ²⁶	Y
Cengiz 2014 ³¹	Y
Chun 2018 ³²	N
Cologne 2015 ³⁶	Y
Dahlke 2014 ³⁸	Y
Dutta 2011 ⁴³	Y

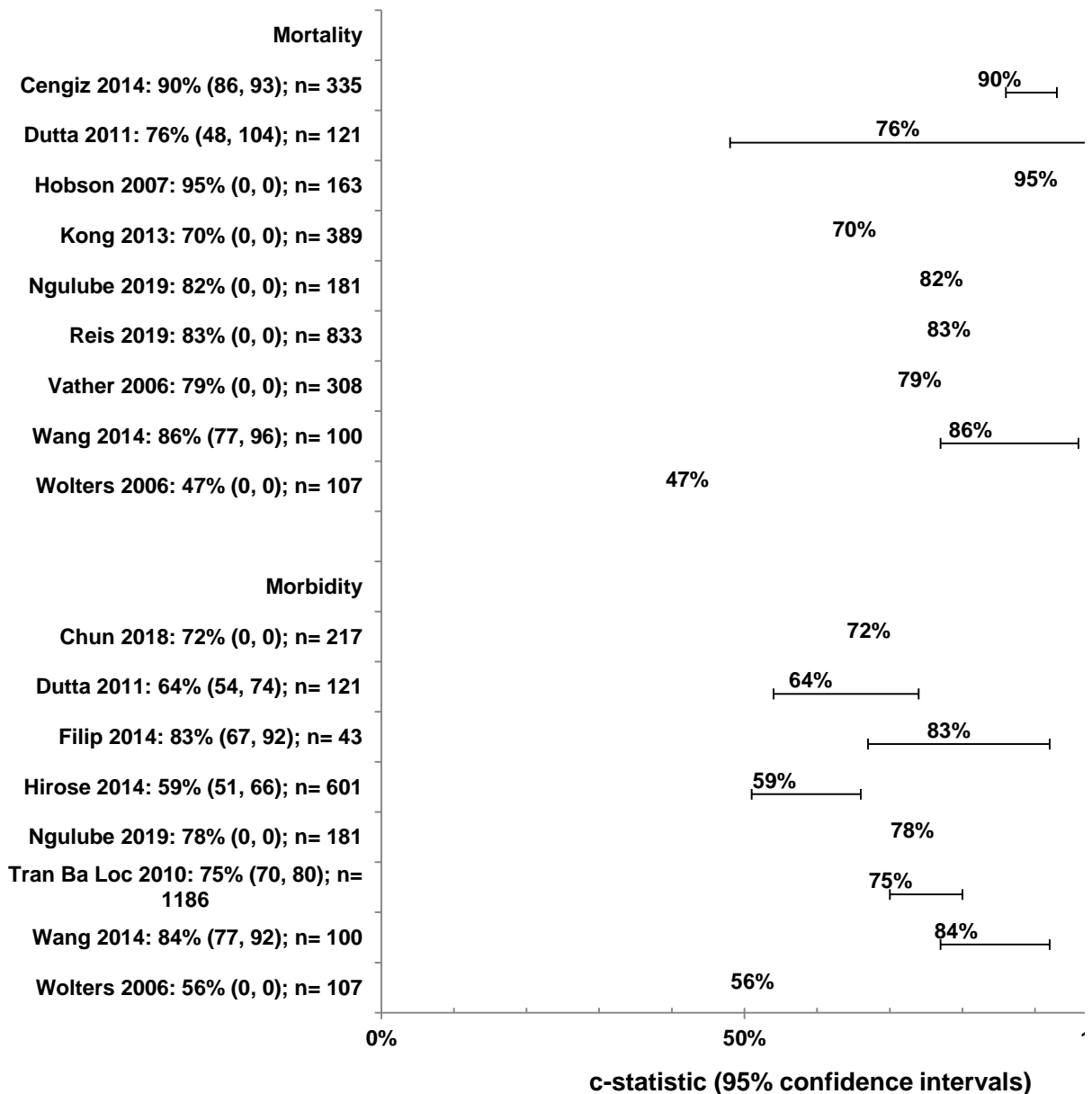
	Overall rating
Model recalibrated or likely that calibration not needed?	Y
Relevant performance measures?	Y
Complexities in data accounted for?	n/a
Non-binary predictors handled appropriately?	n/a
Missing data handled appropriately?	Y
All enrolled included in analysis?	Y
Time interval between baseline and outcome appropriate?	U
Reasonable number of outcome events?	Y
Outcome determined without knowledge of predictor information?	Y
Outcome defined in same way for all?	Y
Predictors excluded from outcome definition?	Y
Pre-specified outcome used?	Y
All relevant predictors analysed?	Y
Predictors all available at time model meant to be used?	Y
Predictor assessments made without knowledge of outcome data?	U
Predictors defined/ass'd same for all?	Y
Similar health across participants?	Y
Appropriate inc and exc?	Y
Appropriate data sources?	Y
Study	
Egberts 2011 ⁴⁵	Y
Egberts 2011 ⁴⁶	Y
Filip 2014 ⁴⁹	Y
Fu 2019 ⁵²	Y
Golan 2018 ⁵⁴	Y
Hirose 2014 ⁵⁷	Y
Hirose 2015 ⁵⁸	Y
Hobson 2007 ⁶⁰	Y

	Overall rating
Model recalibrated or likely that calibration not needed?	Y
Relevant performance measures?	Y
Complexities in data accounted for?	Y
Non-binary predictors handled appropriately?	n/a
Missing data handled appropriately?	Y
All enrolled included in analysis?	Y
Time interval between baseline and outcome appropriate?	Y
Reasonable number of outcome events?	n/a
Outcome determined without knowledge of predictor information?	Y
Outcome defined in same way for all?	Y
Predictors excluded from outcome definition?	Y
Pre-specified outcome used?	Y
All relevant predictors analysed?	Y
Predictors all available at time model meant to be used?	Y
Predictor assessments made without knowledge of outcome data?	Y
Predictors defined/ass'd same for all?	Y
Similar health across participants?	Y
Appropriate inc and exc?	U
Appropriate data sources?	Y
Study	
Huisman 2014 ⁶⁴	Very serious
Igari 2013 ⁶⁵	Very serious
Katlic 2019 ⁷²	Very serious
Kim 2018 ⁷⁸	Very serious
Kong 2013 ⁸²	Very serious
Kong 2015 ⁸³	Very serious
Kwok 2011 ⁸⁷	Serious
Lakomkin 2018 ⁸⁸	Serious

1

Appendix F: C-statistic plots

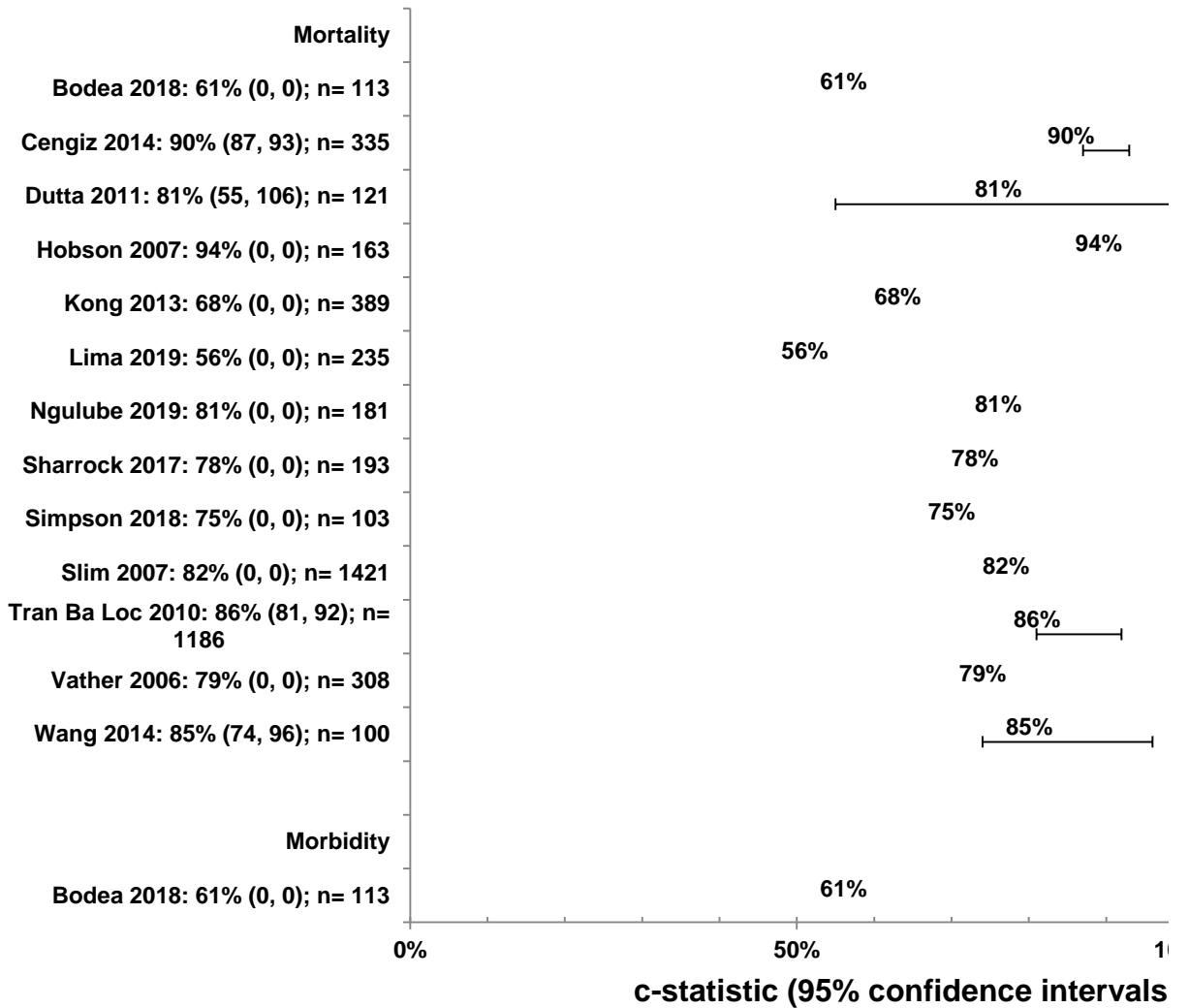
Figure 2: POSSUM



2

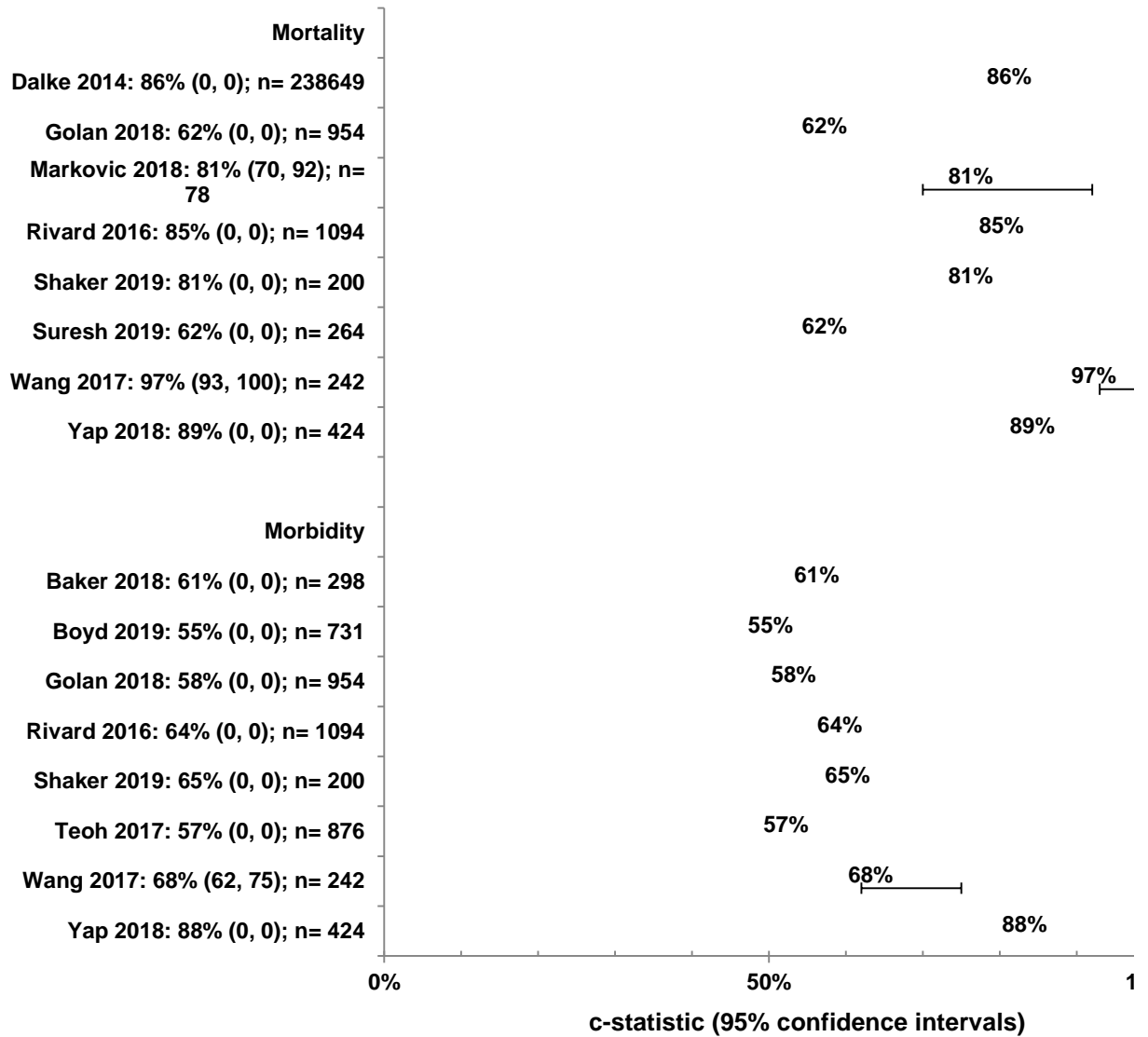
1

Figure 3: P-POSSUM



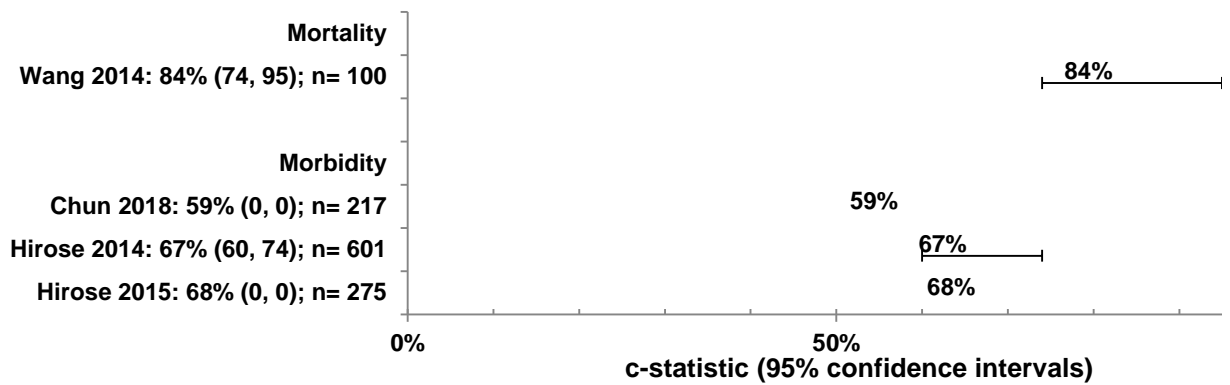
1

Figure 4: ACS NSQIP risk calculator



1

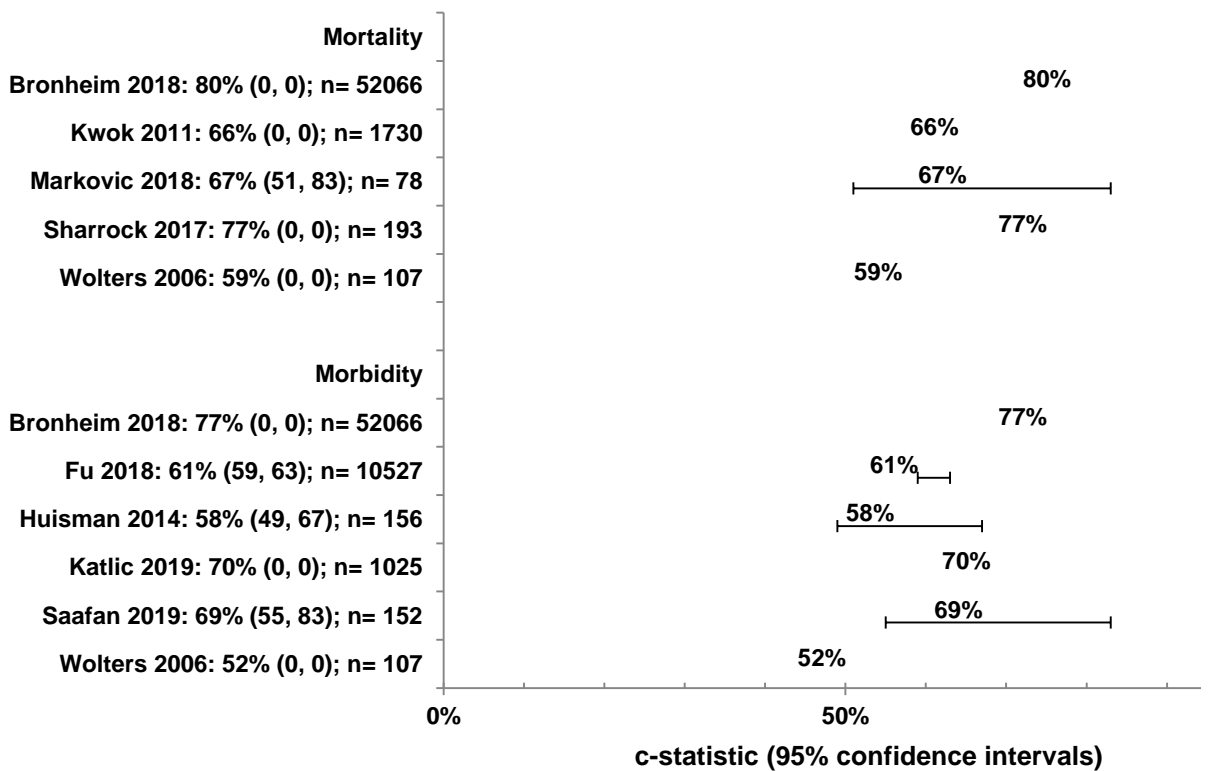
Figure 5: E-PASS



2

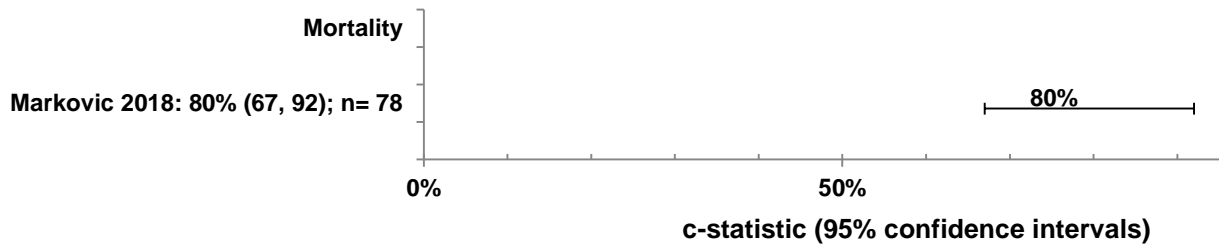
3

Figure 6: ASA



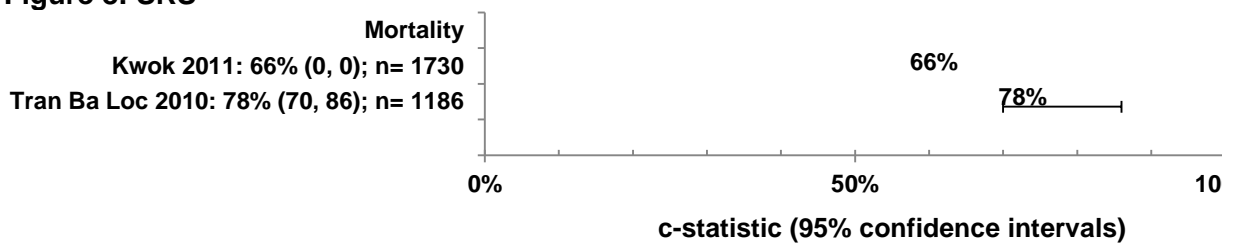
1

Figure 7: SORT



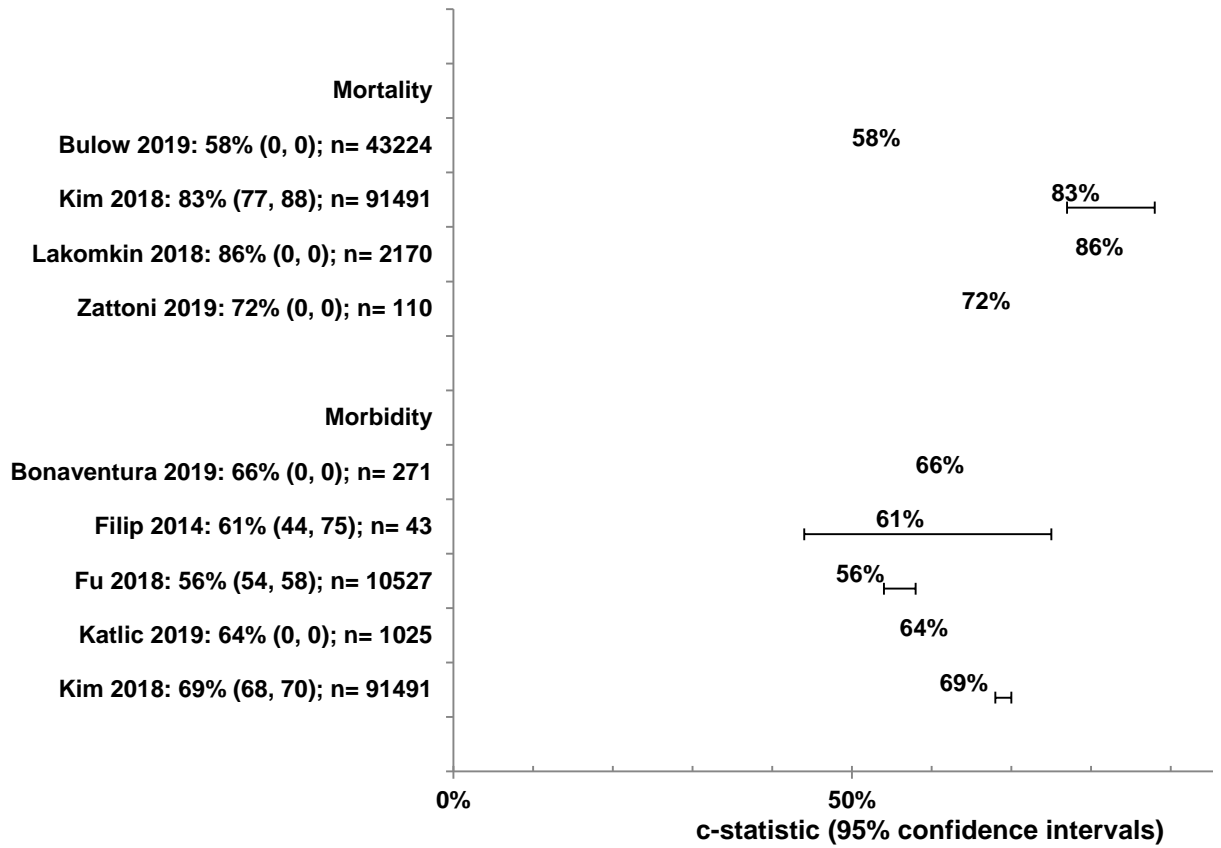
2

Figure 8: SRS



1

Figure 9: Charlson comorbidity index

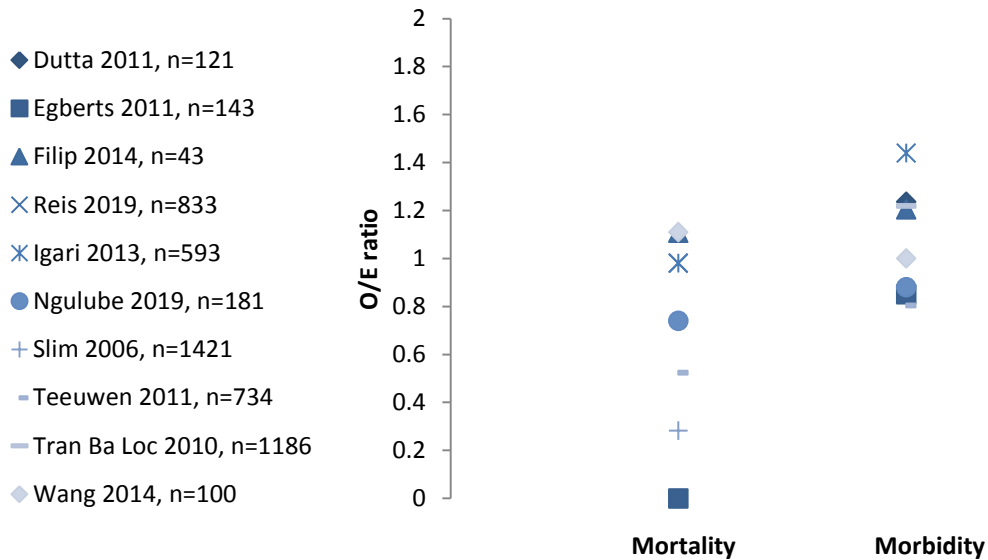


1

2

Appendix G: Calibration plots

Figure 10: POSSUM

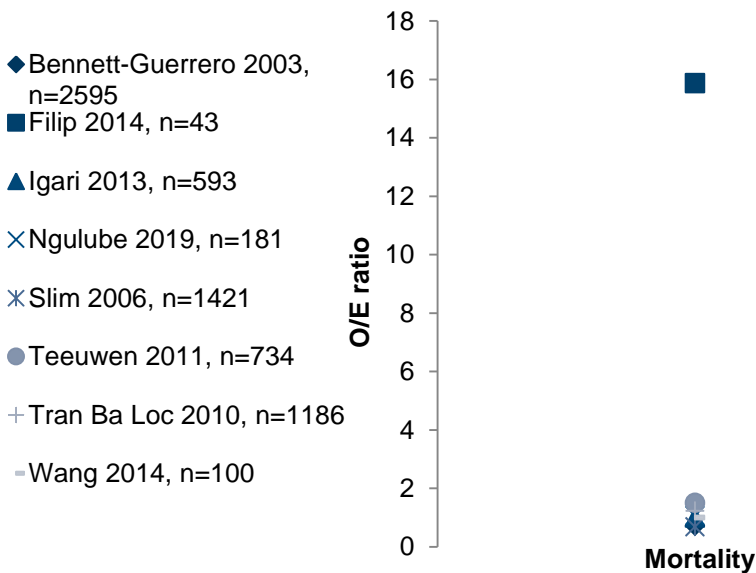


3

4

5

Figure 11: P-POSSUM

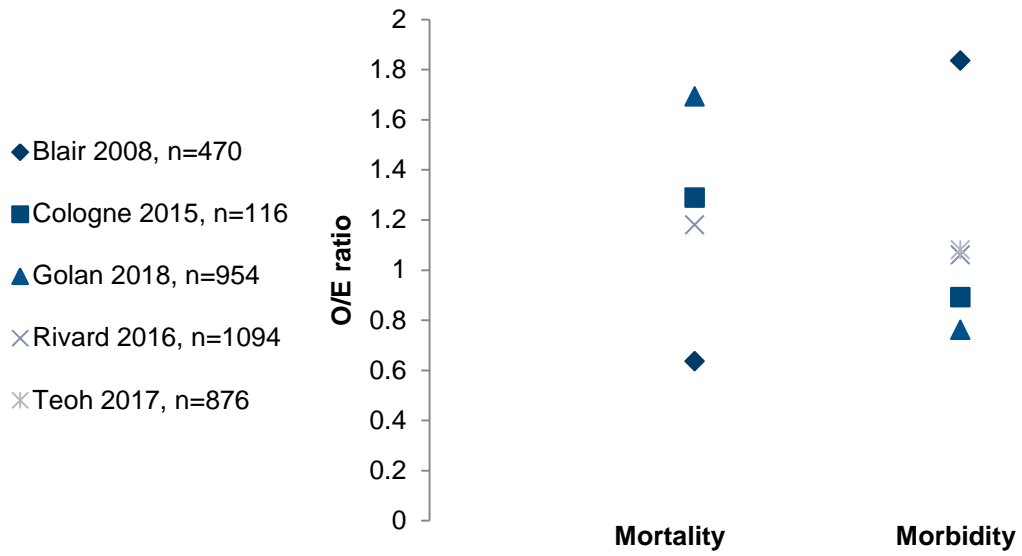


6

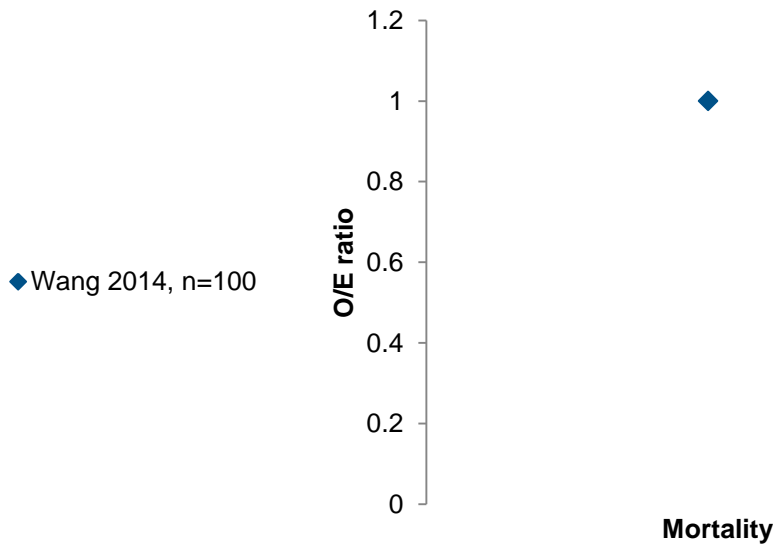
7

8

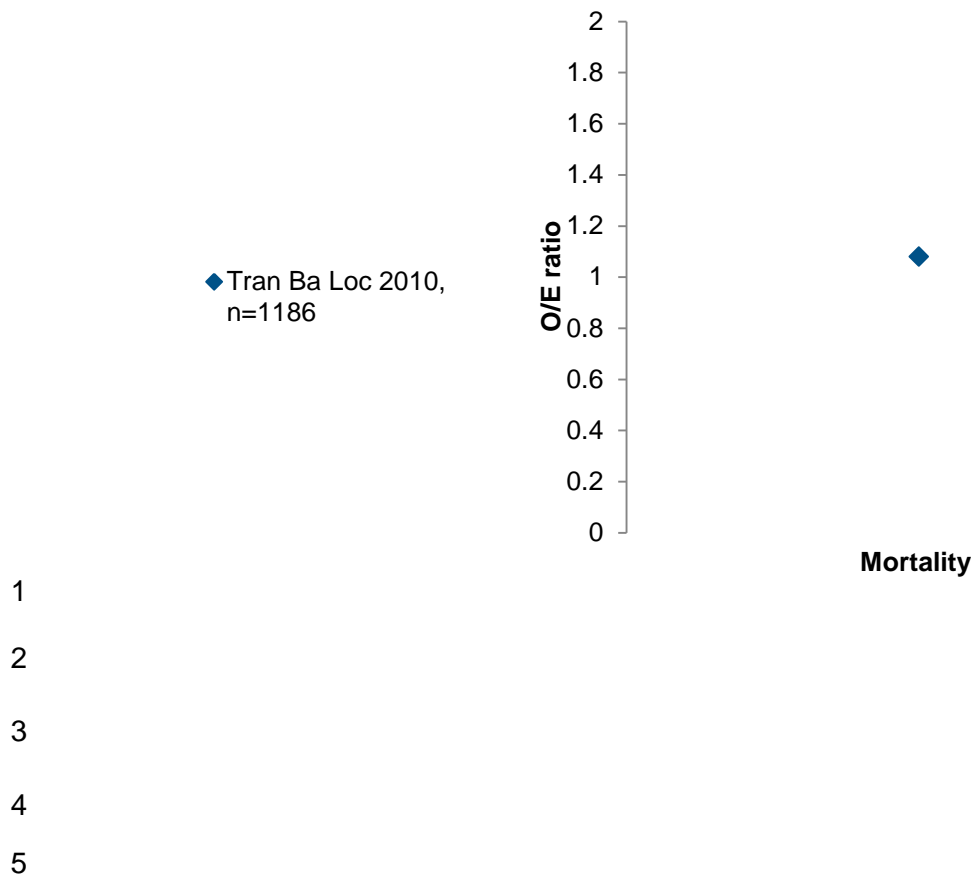
Figure 12: ACS NSQIP risk calculator



1
 2 **Figure 13: E-PASS**



3
 4
 5 **Figure 14: ASA**

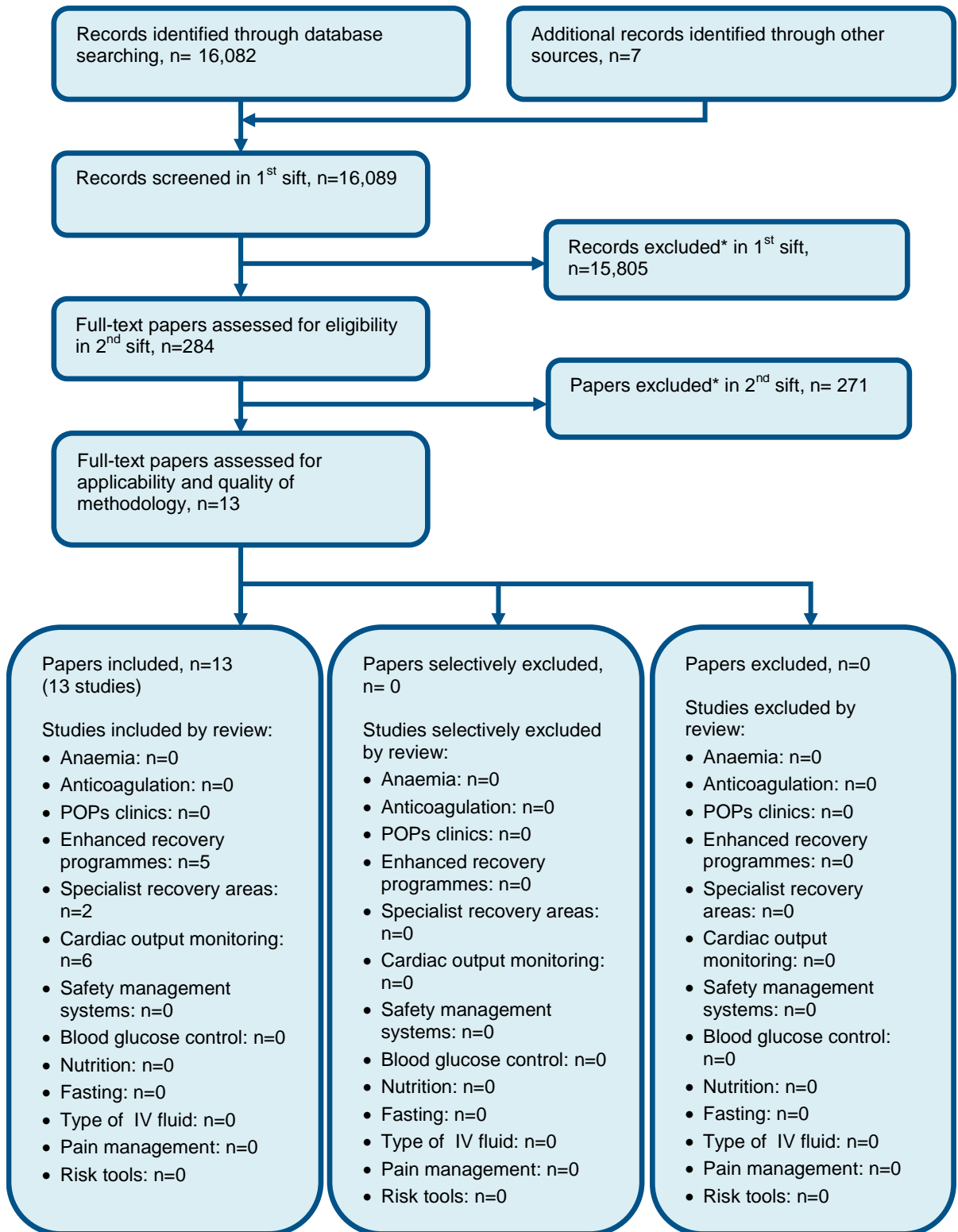


1
2
3
4
5

1
2

Appendix H: Health economic evidence selection

Figure 15: Flow chart of health economic study selection for the guideline



* Non-relevant population, intervention, comparison, design or setting; non-English language

Appendix I: Health economic evidence tables

None.

Appendix J: Excluded studies

J.1 Excluded clinical studies

Table 8: Studies excluded from the clinical review

Reference	Reason for exclusion
Ahle 2019 ¹	Inappropriate intervention
Al-Homoud 2004 ²	Inappropriate outcome data
Ali 2016 ³	Inappropriate outcome data
Amrock 201 ⁴⁴	Inappropriate study design (internal validation)
Anderson 2012 ⁵	Inappropriate intervention
Anonymous 2018 ⁶	No usable data
Anonymous 2018 ⁷	Inappropriate intervention
Arakkal 2018 ⁸	Abstract only
Armstrong 2019 ⁹	Inappropriate outcome data
Arshad 2014 ¹⁰	Abstract only
Bartlett 2014 ¹²	Inappropriate intervention
Bekelis 2014 ¹³	Inappropriate intervention
Bihorac 2019 ¹⁵	Inappropriate intervention
Blair 2016 ¹⁶	Citation only
Bollschweiler 2005 ¹⁹	Inappropriate outcome data
Borja-Cacho 2010 ²¹	Inappropriate intervention
Brennan 2019 ²³	Inappropriate intervention
Bryce 2012 ²⁵	Inappropriate intervention
Burg 2019 ²⁷	Inappropriate outcome data
Burgess 2017 ²⁸	Inappropriate outcome data
Butterfield 2015 ²⁹	Inappropriate intervention
Cao 2018 ³⁰	Inappropriate outcome data
Chung 2017 ³³	Inappropriate intervention
Cohen 2009 ³⁴	Inappropriate intervention
Collard 2018 ³⁵	Inappropriate outcome data
Cote 2019 ³⁷	Inappropriate review population
de Castro 2009 ³⁹	Inappropriate outcome data
Debinska 2011 ⁴⁰	Inappropriate outcome data
DeLuzio 2016 ⁴¹	Inappropriate outcome data
Dunn 2019 ⁴²	Inappropriate outcome data
Easterlin 2013 ⁴⁴	Inappropriate intervention
Engin 2018 ⁴⁷	Inappropriate outcome data
Farhat 2012 ⁴⁸	Inappropriate outcome data
Ford 2015 ⁵⁰	Abstract only
Fryer 2018 ⁵¹	Citation only
Gentry 2018 ⁵³	Systematic review: references screened
Hacohen Solovitz 2018 ⁵⁵	Inappropriate outcome data
Harris 2019 ⁵⁶	Inappropriate intervention
Hirpara 2019 ⁵⁹	Inappropriate outcome data

Reference	Reason for exclusion
Hoeks 2009 ⁶¹	Inappropriate intervention
Hoftman 2013 ⁶²	Inappropriate outcome data
Huang 2017 ⁶³	Inappropriate outcome data
Inoue 2019 ⁶⁶	Inappropriate intervention
Jean 2016 ⁶⁷	Inappropriate outcome data
Jensen 2019 ⁶⁸	Inappropriate intervention
Kalender 2014 ⁶⁹	Inappropriate intervention
Kapma 2017 ⁷⁰	Inappropriate intervention
Karabulut 2003 ⁷¹	Inappropriate intervention
Kavanagh 2016 ⁷³	Citation only
Kelly 2011 ⁷⁴	Inappropriate intervention
Kertai 2003 ⁷⁵	Inappropriate intervention
Khalfallah 2016 ⁷⁶	Inappropriate intervention
Khene 2018 ⁷⁷	Inappropriate outcome data
Klausing 2019 ⁷⁹	Inappropriate outcome data
Klinceva 2006 ⁸⁰	Inappropriate intervention
Knight 2009 ⁸¹	Citation only
Kong 2015 ⁸³	Inappropriate Intervention
Kongkaewpaisan 2019 ⁸⁴	Inappropriate outcome data
Kongwibulwut 2019 ⁸⁵	Inappropriate outcome data
Kurki 2002 ⁸⁶	Inappropriate intervention
Lam 2004 ⁸⁹	Inappropriate outcome data
Laurent 2013 ⁹⁰	Inappropriate intervention
Lazarides 1997 ⁹¹	Inappropriate outcome data
Le Manach 2016 ⁹²	Inappropriate intervention
Lee 1999 ⁹⁴	Inappropriate intervention
Lee 2019 ⁹³	Systematic review: references screened
Lindroth 2019 ⁹⁶	Inappropriate intervention
Malik 2019 ⁹⁷	Inappropriate outcome data
Marconi 2018 ⁹⁸	Inappropriate intervention
Marufu 2015 ¹⁰⁰	Inappropriate outcome data
Mayhew 2019 ¹⁰¹	Systematic review: references screened
Meguid 2016 ¹⁰²	Inappropriate intervention
Meguid 2016 ¹⁰³	Inappropriate intervention
Nag 2015 ¹⁰⁴	Inappropriate study design
Nagashima 2005 ¹⁰⁵	Inappropriate outcome data
Nashef 1999 ¹⁰⁷	Inappropriate intervention
Nashef 2002 ¹⁰⁶	Inappropriate intervention
Nesi 2004 ¹⁰⁹	Inappropriate intervention
O'Brien 2009 ¹¹¹	Inappropriate intervention
Parmar 2010 ¹¹²	Inappropriate outcome data
Patila 2006 ¹¹³	Inappropriate intervention
Patterson 2008 ¹¹⁴	Systematic review: references screened
Paul 2007 ¹¹⁵	Inappropriate intervention
Pavone 2018 ¹¹⁶	Inappropriate outcome data

Reference	Reason for exclusion
Perkins 2004 ¹¹⁸	Inappropriate intervention
Perkins 2006 ¹¹⁷	Inappropriate intervention
Pillai 2015 ¹¹⁹	Inappropriate intervention
Pinna-Pintor 2002 ¹²⁰	Inappropriate intervention
Pliam 1997 ¹²¹	Inappropriate intervention
Prabakaran 2019 ¹²²	Inappropriate intervention
Ranucci 2010 ¹²³	Inappropriate intervention
Ranucci 2016 ¹²⁴	Inappropriate intervention
Ranucci 2018 ¹²⁵	Inappropriate intervention
Rasmussen 2018 ¹²⁶	Inappropriate outcome data
Raymond 2019 ¹²⁷	Inappropriate outcome data
Rix 2007 ¹³⁰	Systematic review: references screened
Roxas 2017 ¹³¹	Abstract only
Ryan 2018 ¹³²	Inappropriate outcome data
Sankar 2019 ¹³⁴	Inappropriate outcome data
Saunders 2015 ¹³⁵	Citation only
Schneider 2016 ¹³⁶	Inappropriate outcome data
Sfoungaristos 2015 ¹³⁸	Inappropriate intervention
Sfoungaristos 2016 ¹³⁷	Inappropriate intervention
Shah 2012 ¹³⁹	Inappropriate intervention
Sharma 2019 ¹⁴¹	Inappropriate intervention
Shiba 2013 ¹⁴³	Inappropriate outcome data
Silaschi 2015 ¹⁴⁴	Inappropriate intervention
Silva Junior 2010 ¹⁴⁵	Inappropriate review population
Singh 2018 ¹⁴⁷	Inappropriate intervention
Sobotka 2018 ¹⁴⁹	Inappropriate intervention
Srilata 2015 ¹⁵⁰	Inappropriate intervention
Strilchuk 2018 ¹⁵¹	Inappropriate outcome data
Suzuki 2018 ¹⁵³	Inappropriate outcome data
Tambyraja 2008 ¹⁵⁴	Systematic review: references screened
ter Horst 2012 ¹⁵⁷	Inappropriate Intervention
Thiels 2017 ¹⁵⁸	Inappropriate intervention
Tian 2014 ¹⁵⁹	Inappropriate intervention
Traven 2019 ¹⁶²	Inappropriate intervention
Tsaousi 2015 ¹⁶³	Inappropriate intervention
Tyritzis 2012 ¹⁶⁴	Inappropriate intervention
Vaid 2012 ¹⁶⁵	Inappropriate intervention
Varela Barca 2019 ¹⁶⁶	Inappropriate intervention
Veeravagu 2017 ¹⁶⁸	Inappropriate intervention
Wang 2015 ¹⁷¹	Inappropriate intervention
Wang 2015 ¹⁷⁰	Inappropriate intervention
Wendt 2014 ¹⁷⁴	Inappropriate intervention
Wingert 2016 ¹⁷⁵	Inappropriate outcome data
Ye 2019 ¹⁷⁸	Inappropriate outcome data
Zhang 2014 ¹⁸⁰	Inappropriate intervention

Reference	Reason for exclusion
Zheng 2013 ¹⁸¹	Inappropriate intervention
Zugel 2011 ¹⁸²	Inappropriate intervention

1

2 J.2 Excluded health economic studies

3 Published health economic studies that met the inclusion criteria (relevant population,
4 comparators, economic study design, published 2003 or later and not from non-OECD
5 country or USA) but that were excluded following appraisal of applicability and
6 methodological quality are listed below. See the health economic protocol for more details.

7 **Table 9: Studies excluded from the health economic review**

Reference	Reason for exclusion
None.	

8

9

10