

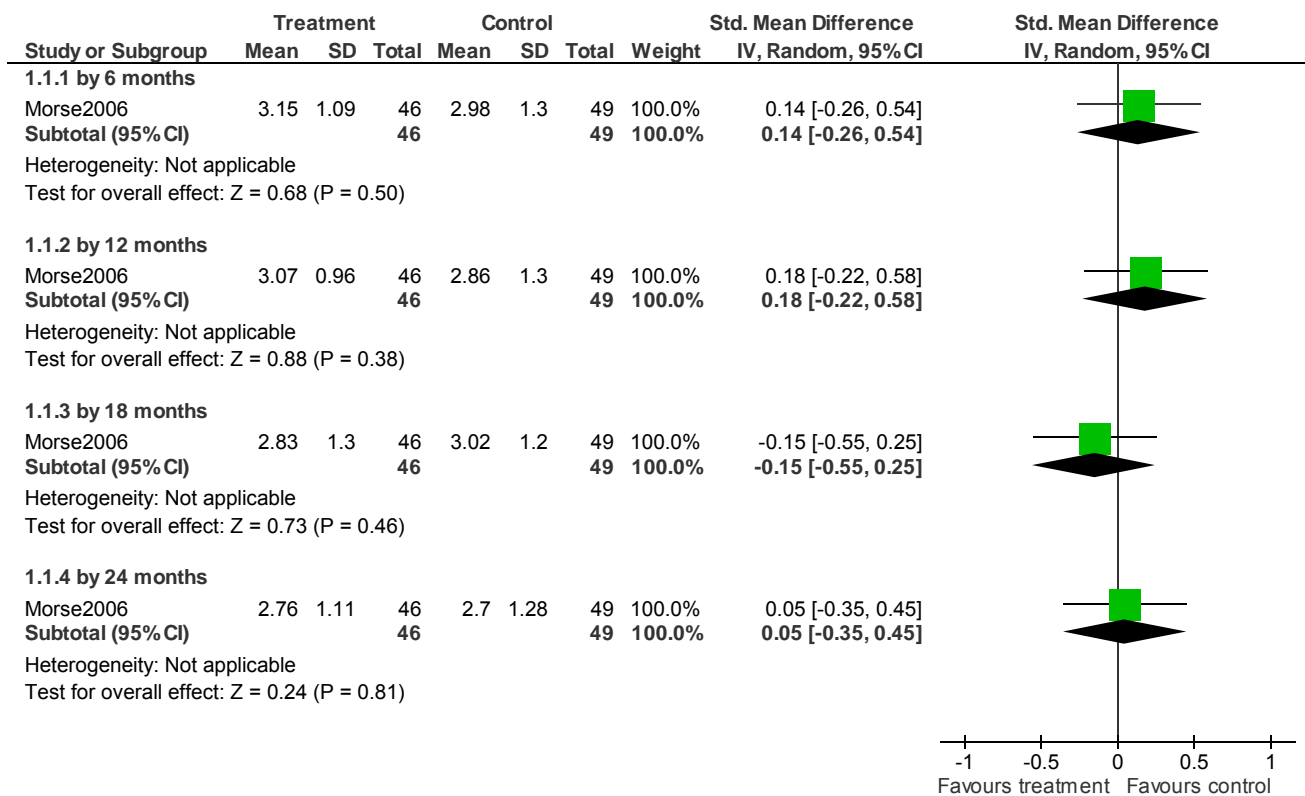
APPENDIX 14: CLINICAL EVIDENCE FOREST PLOTS

1	INTEGRATED SERVICE MODELS vs. STANDARD CARE	2
2	INTEGRATED ACT vs. CLINICAL CASEMANAGEMENT	4
3	STAFFACCOMMODATION vs. STANDARD CARE	9
4	CBT vs. STANDARD CARE.....	13
5	MOTIVATIONAL INTERVIEWING vs. STANDARD CARE.....	15
6	CBT + MOTIVATIONAL INTERVIEWINGvs. STANDARD CARE....	16
7	SOCIAL SKILLS/PSYCHOEDUCATION vs. STANDARD CARE.....	20
8	CONTINGENCYMANAGEMENT vs. STANDARD CARE	22

Service delivery models - Forest plots

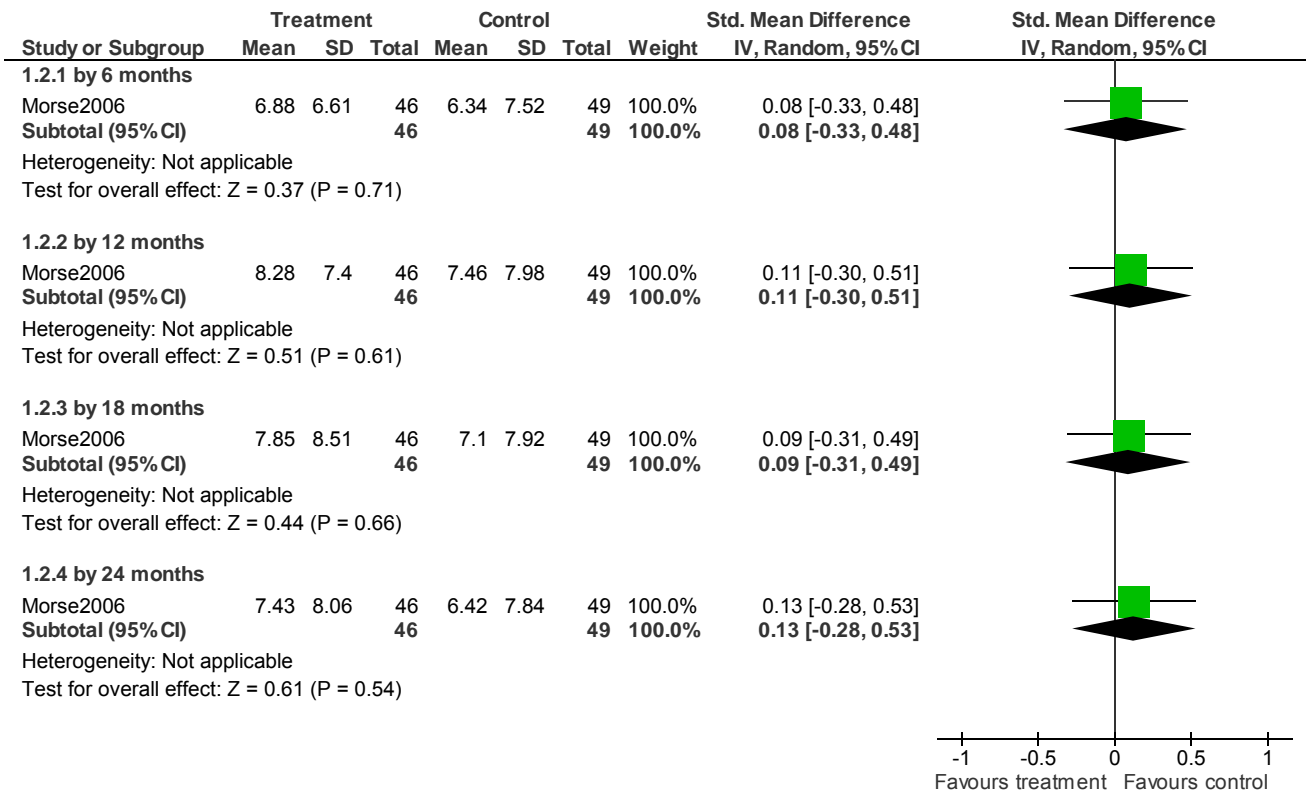
1 INTEGRATED SERVICE MODELS vs. STANDARD CARE (critical outcomes)

1.1 Substance use: 1. Substance use rating (high=poor)



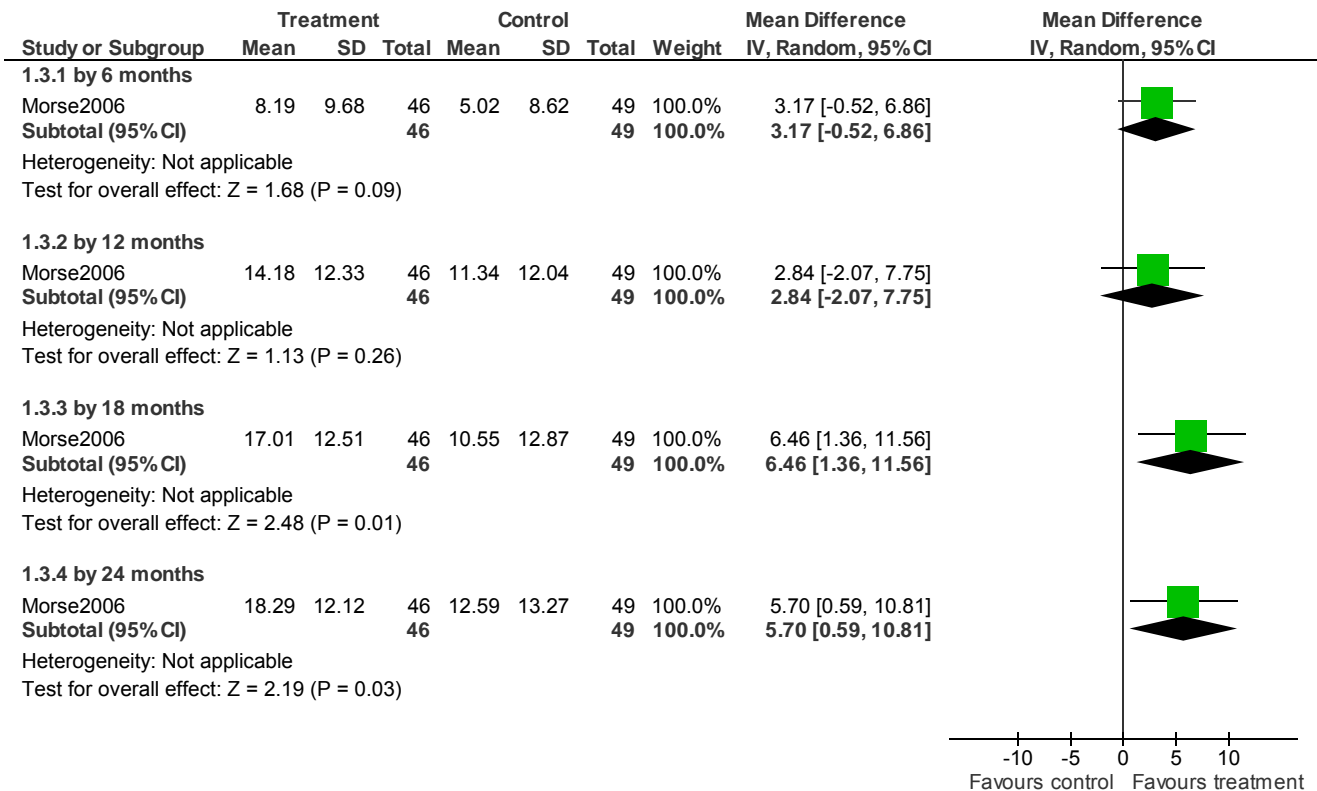
Service delivery models - Forest plots

1.2 Substance use: 2. Days used substances



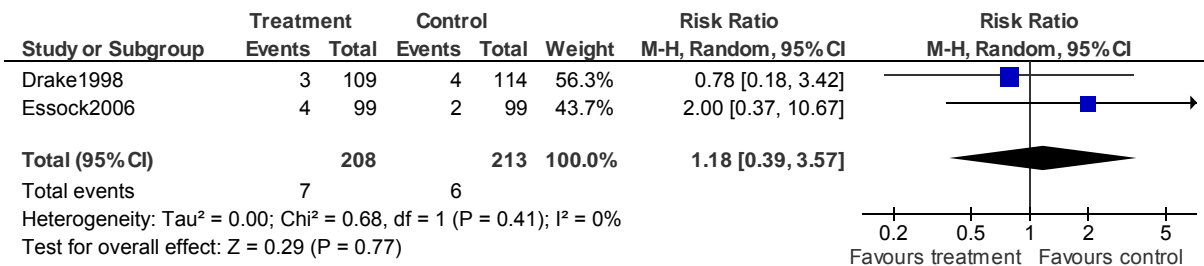
Service delivery models - Forest plots

1.3 Service use: 1. Days in stable community residences (not in hospital)



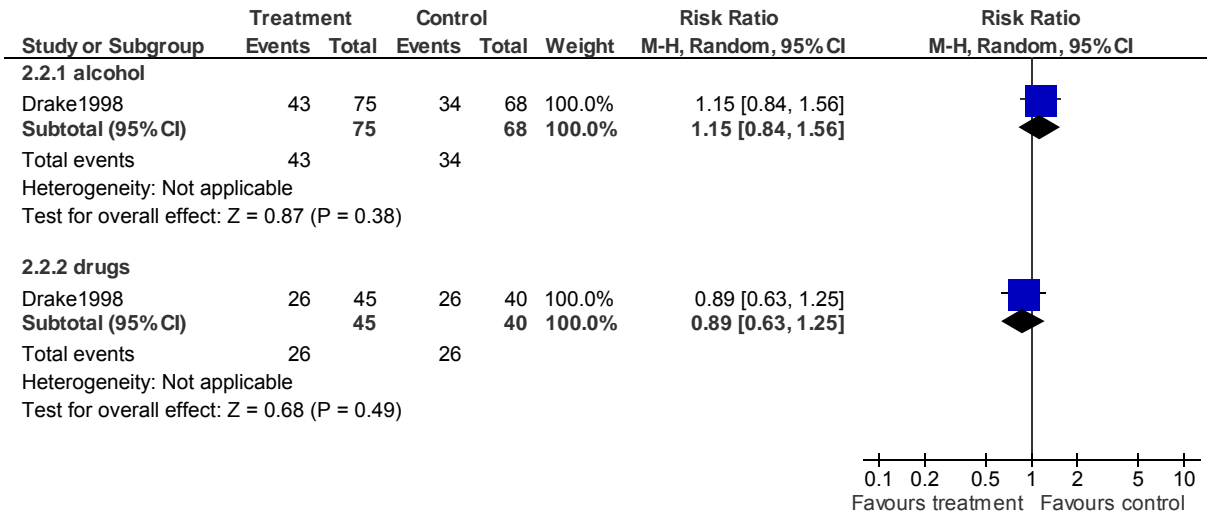
2 INTEGRATED ACT vs. CLINICAL CASE MANAGEMENT (critical outcomes)

2.1 Death - by 36 months



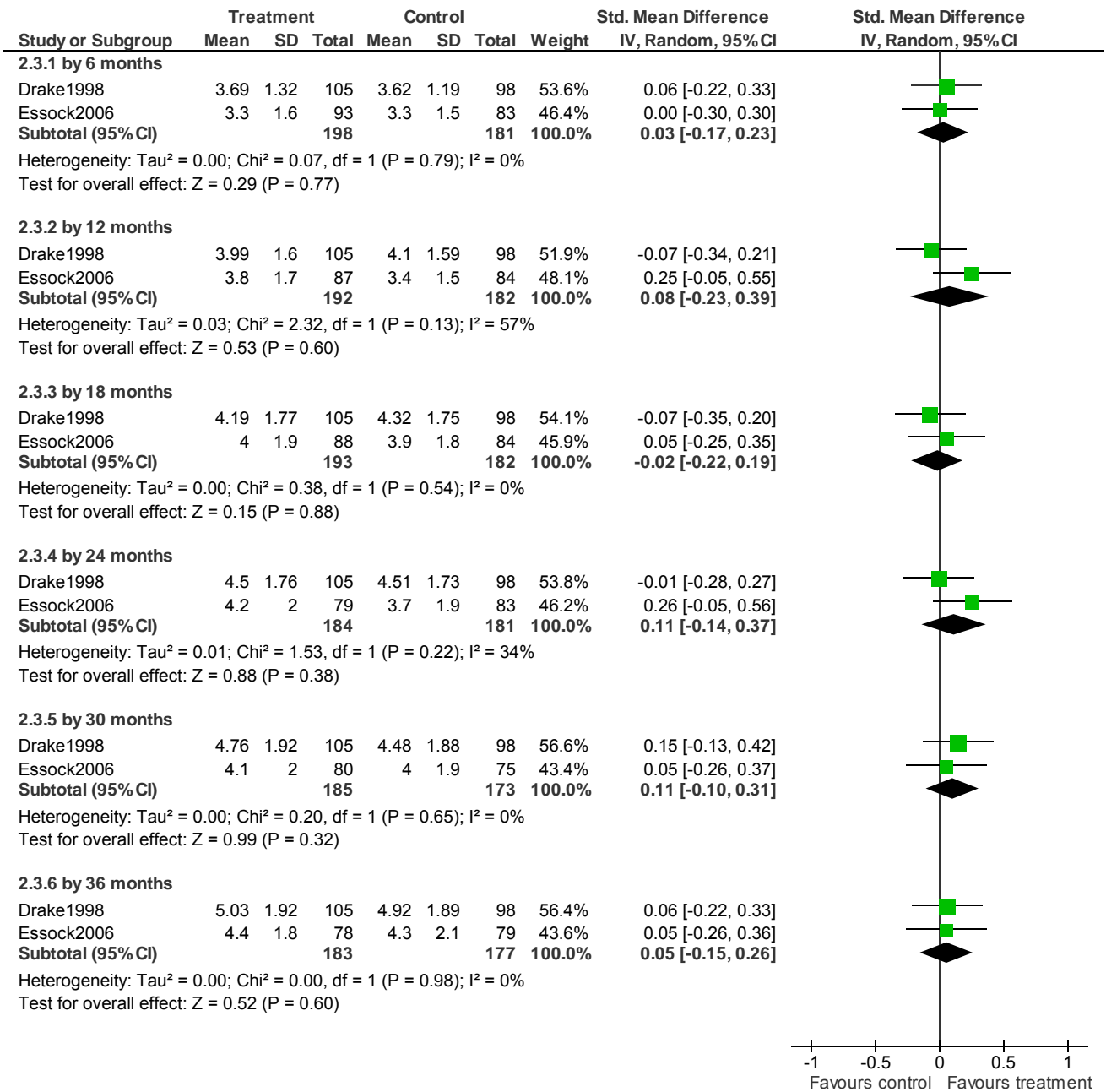
Service delivery models - Forest plots

2.2 Substance use: 1. Not in remission - by 36 months



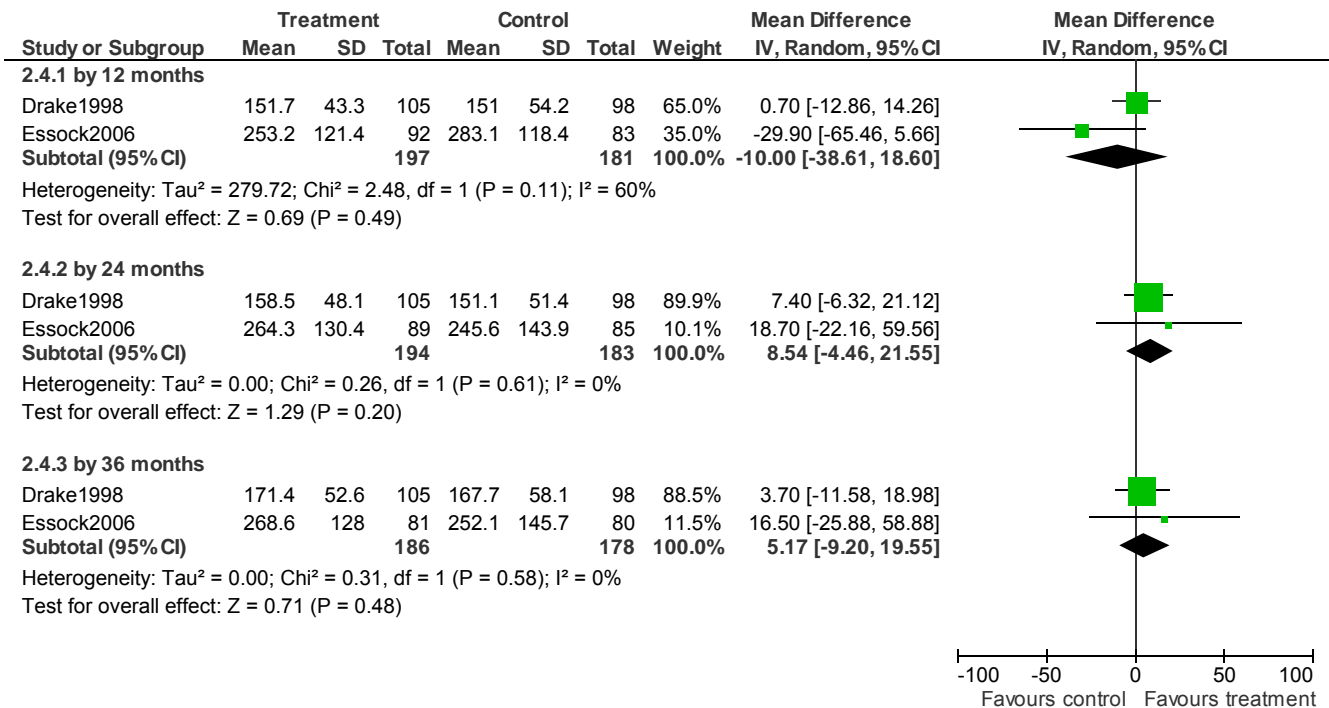
Service delivery models - Forest plots

2.3 Substance use: 2. Substance abuse (SATS, low=poor)



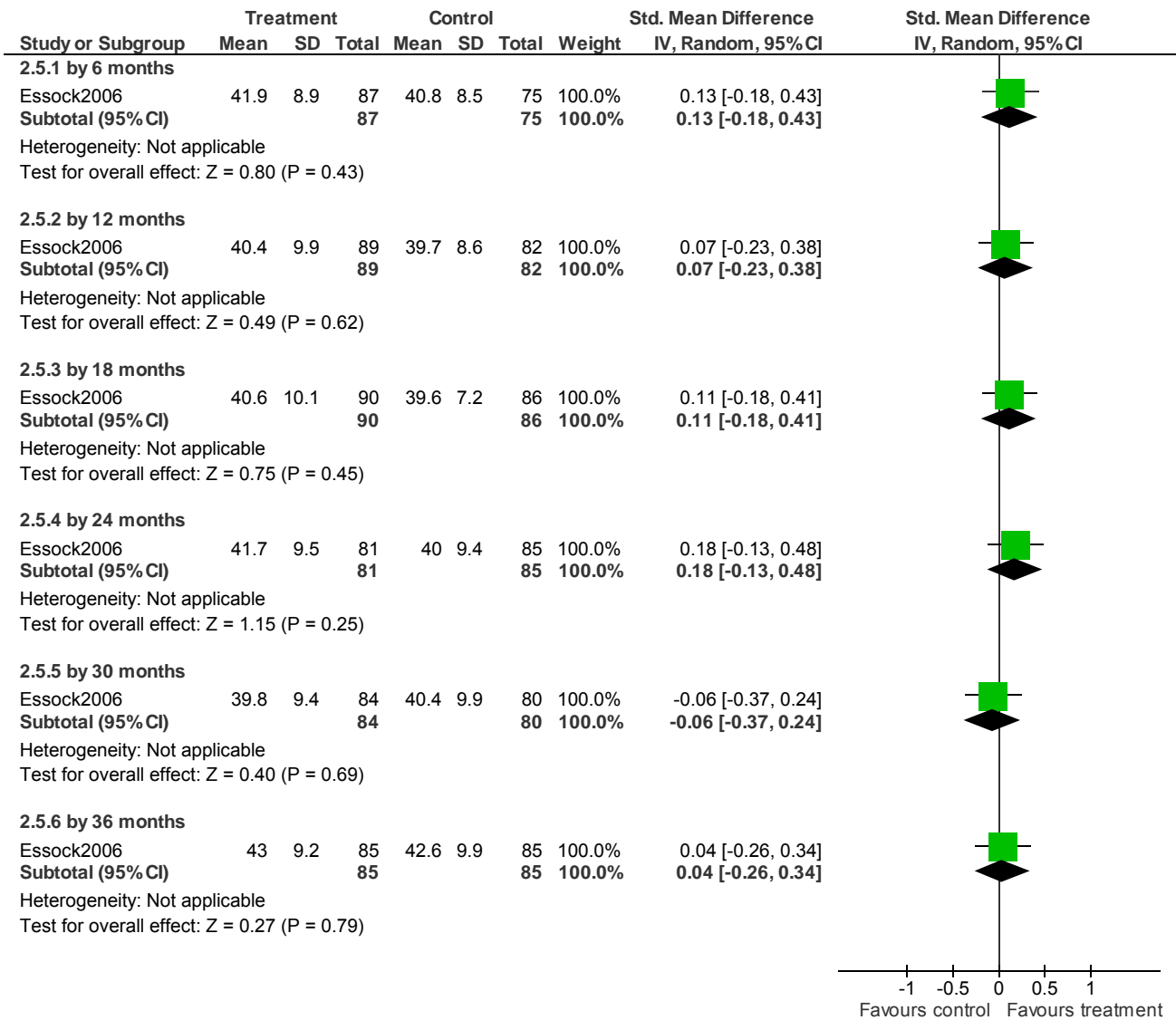
Service delivery models - Forest plots

2.4 Service use: 1. Days in stable community residences (not in hospital)



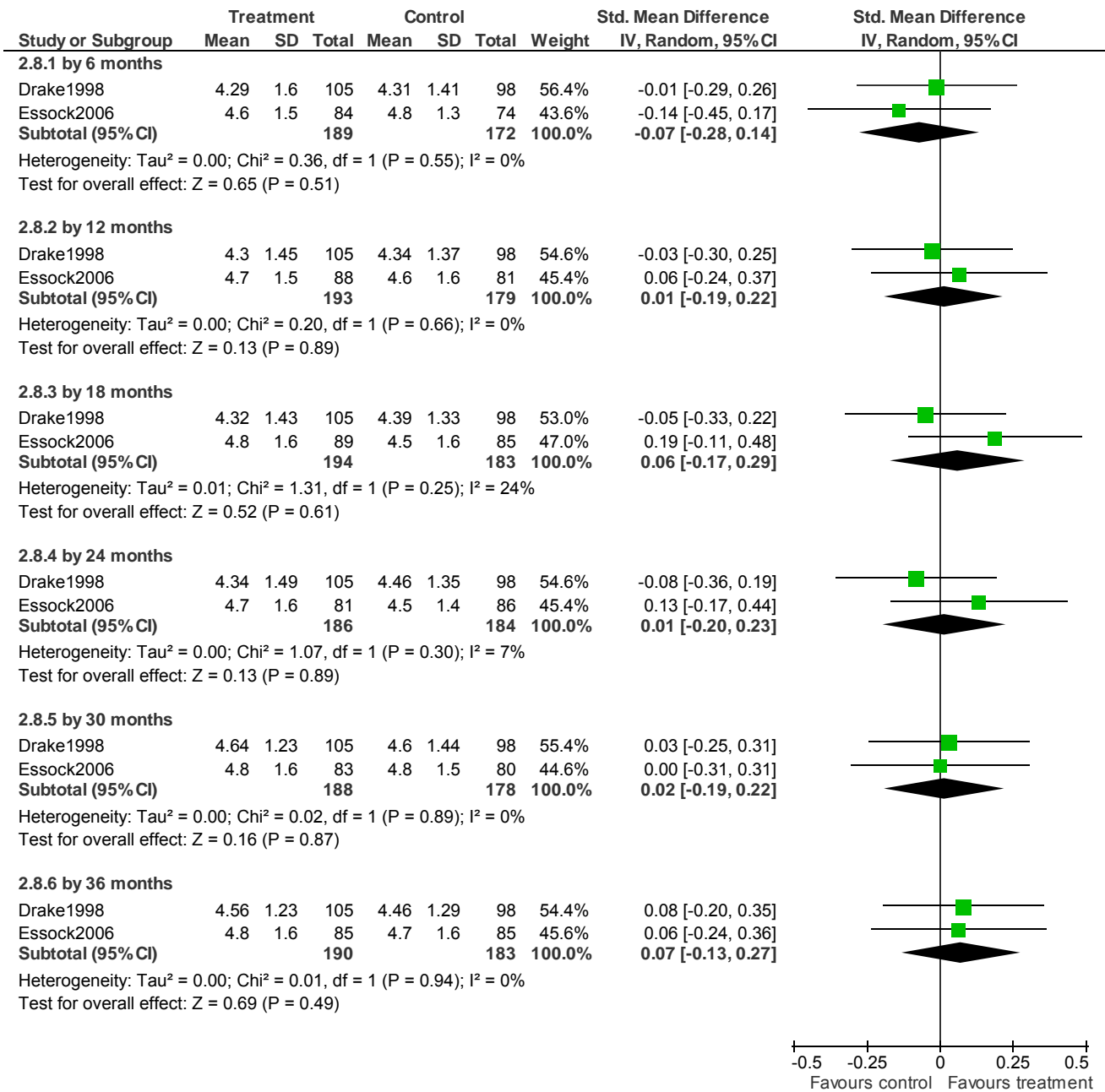
Service delivery models - Forest plots

2.5 Functioning: 1. Average general score (GAS, low=poor)



Service delivery models - Forest plots

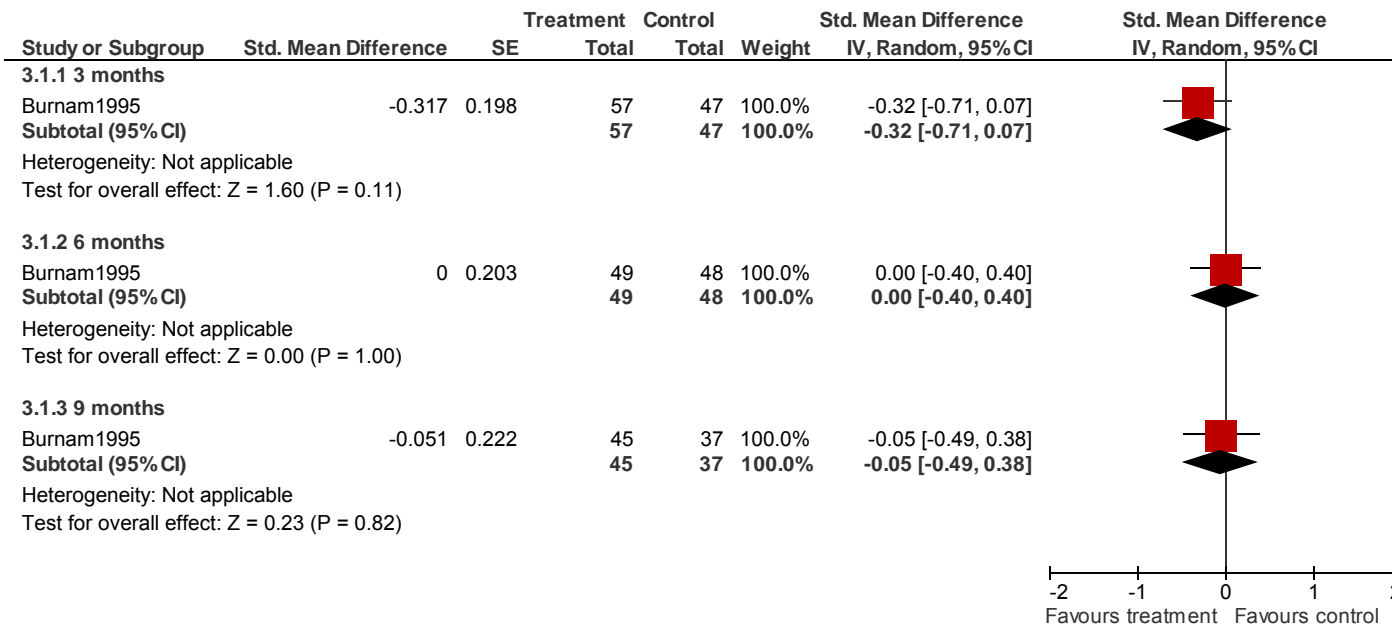
2.8 Satisfaction: Average general score (QOLI, low=poor)



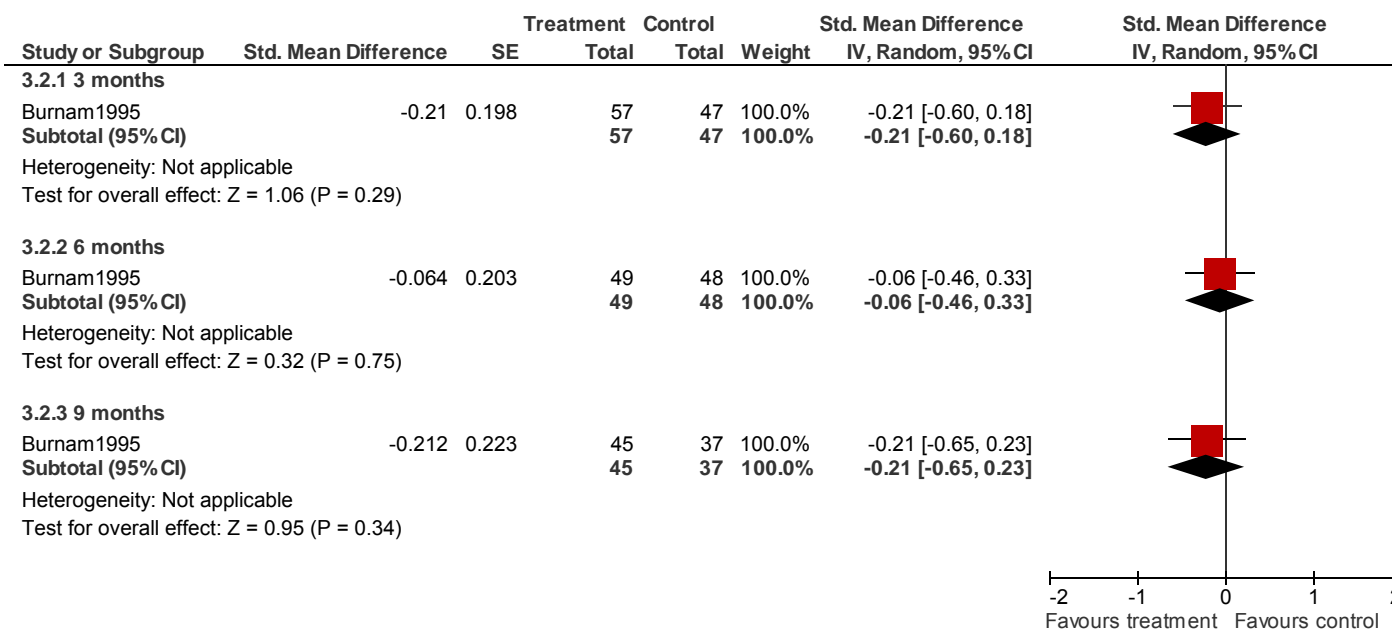
3 STAFF ACCOMMODATION vs. STANDARD CARE (critical outcomes)

Service delivery models - Forest plots

3.1 Substance use: 1. Days used alcohol (low=poor)

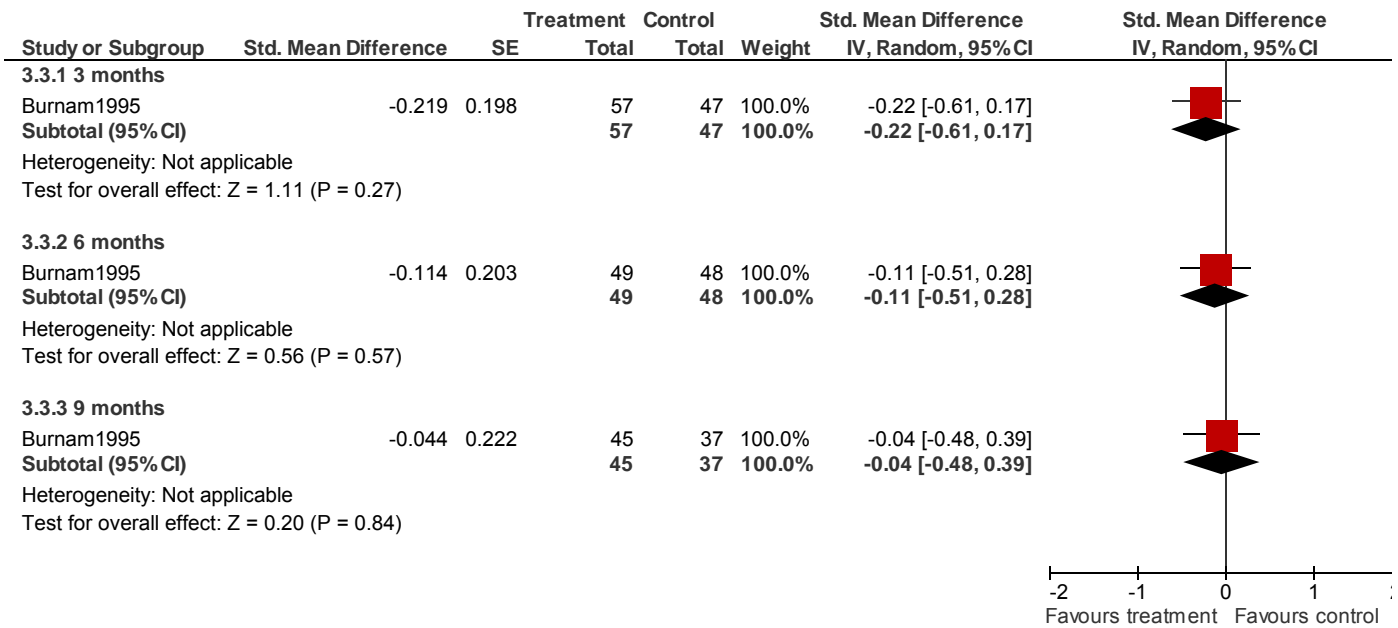


3.2 Substance use: 2. Level of alcohol use (low=poor)

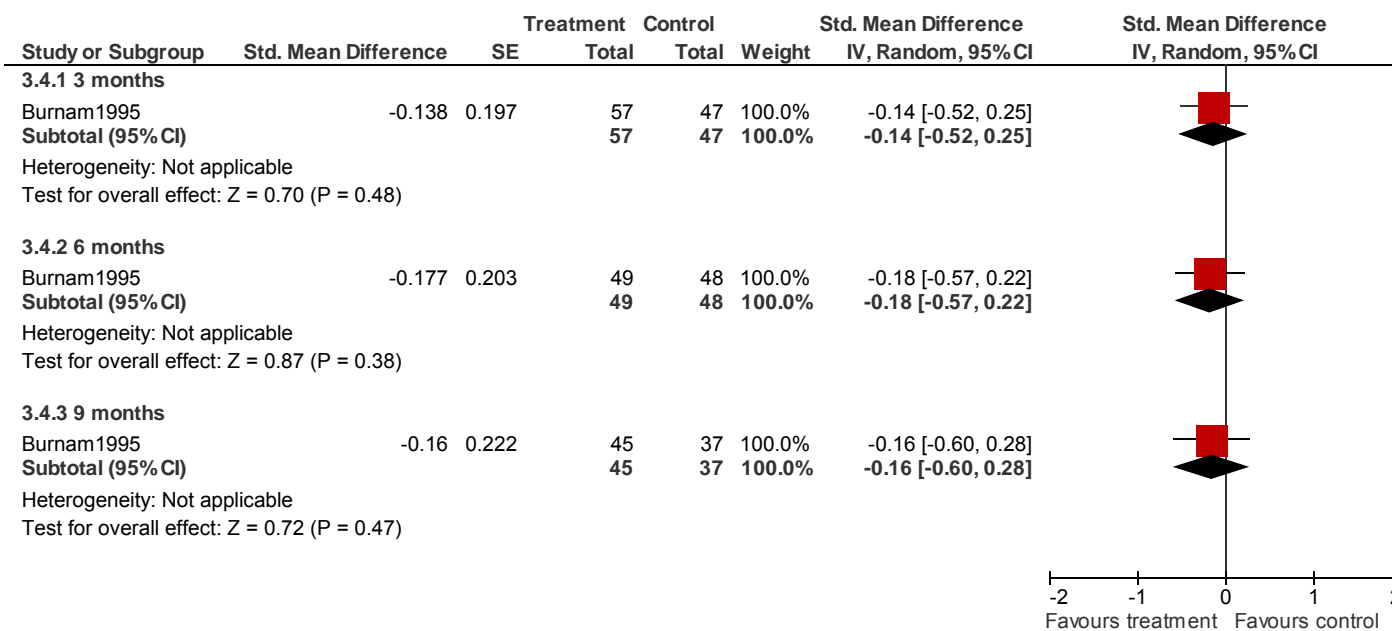


Service delivery models - Forest plots

3.3 Substance use: 3. Days used drugs (low=poor)

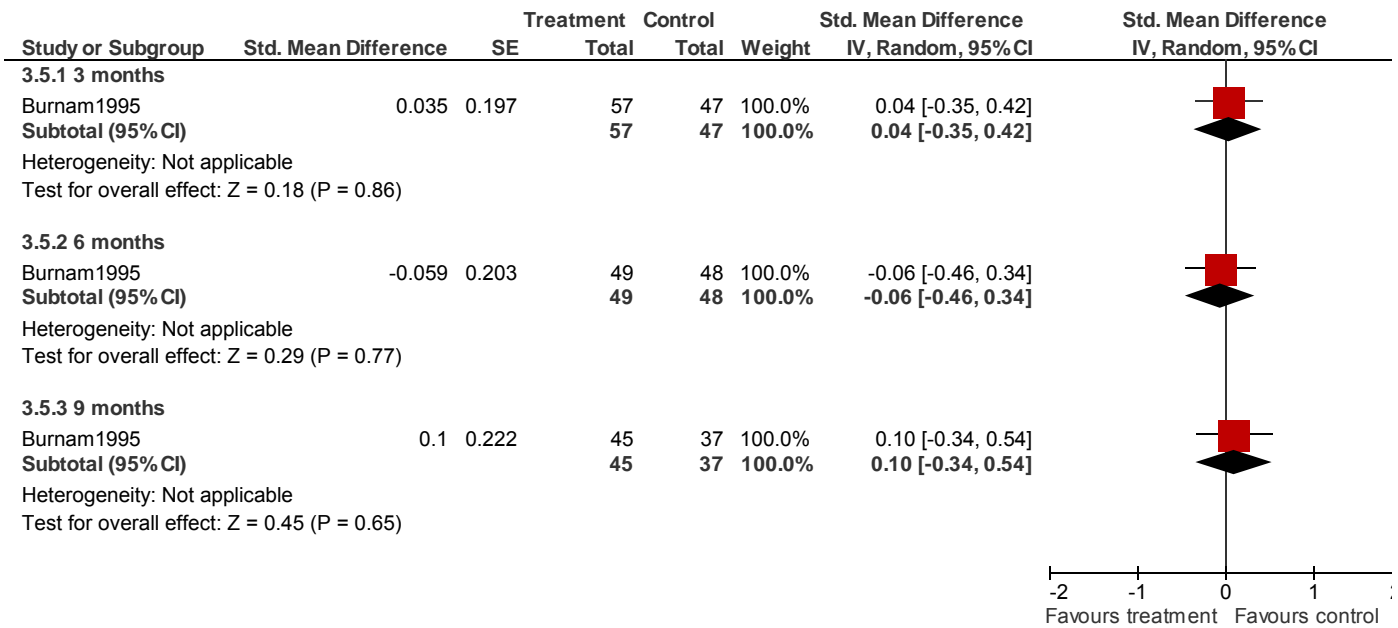


3.4 Substance use: 4. Severity of drug use (low=poor)

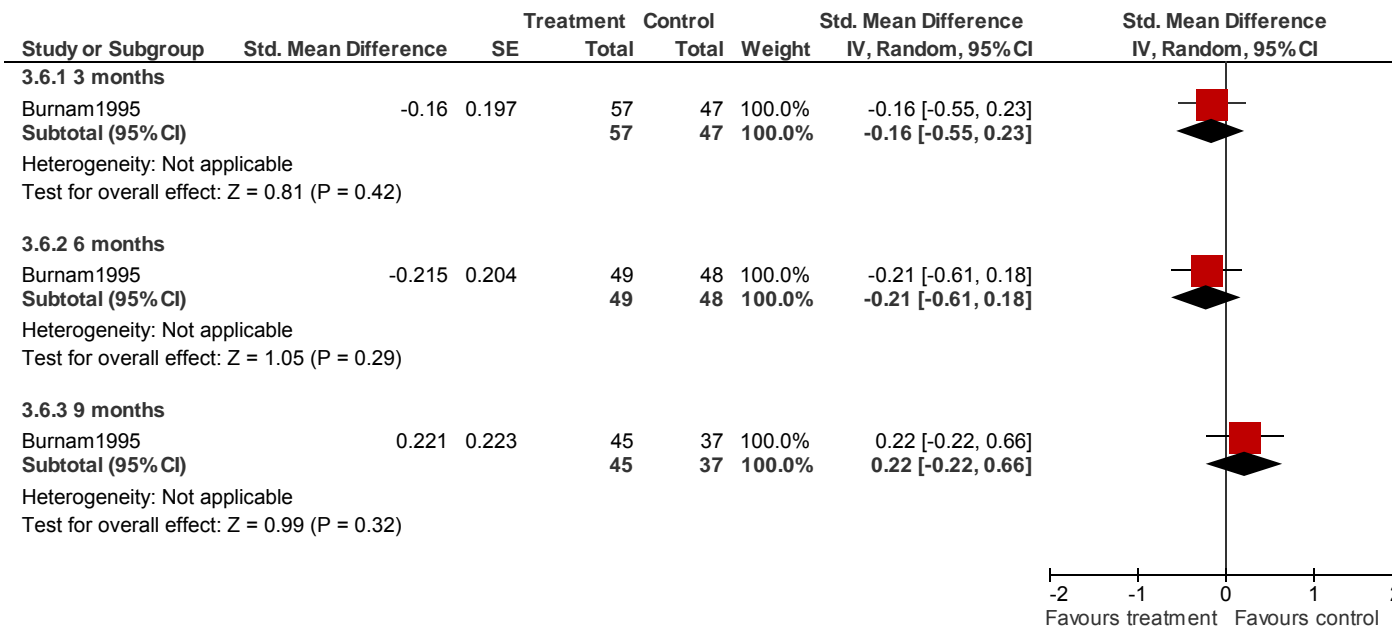


Service delivery models - Forest plots

3.5 Functioning: 1. %time on streets (low=poor)



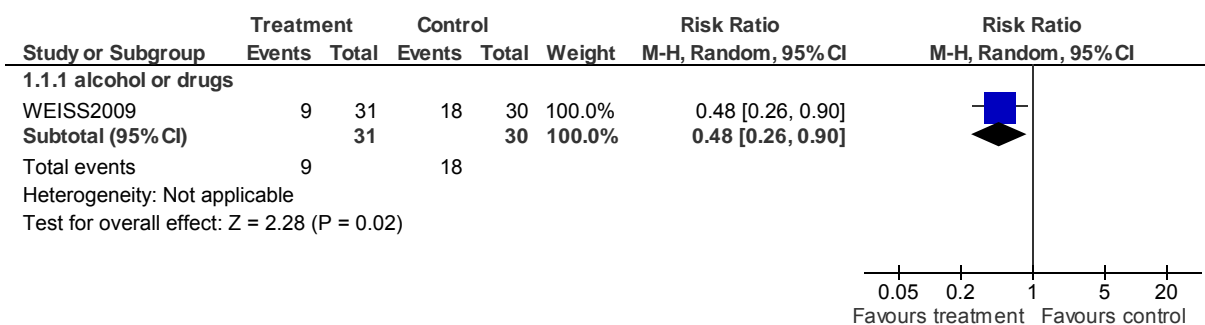
3.6 Functioning: 2. %time in independent housing (low=poor)



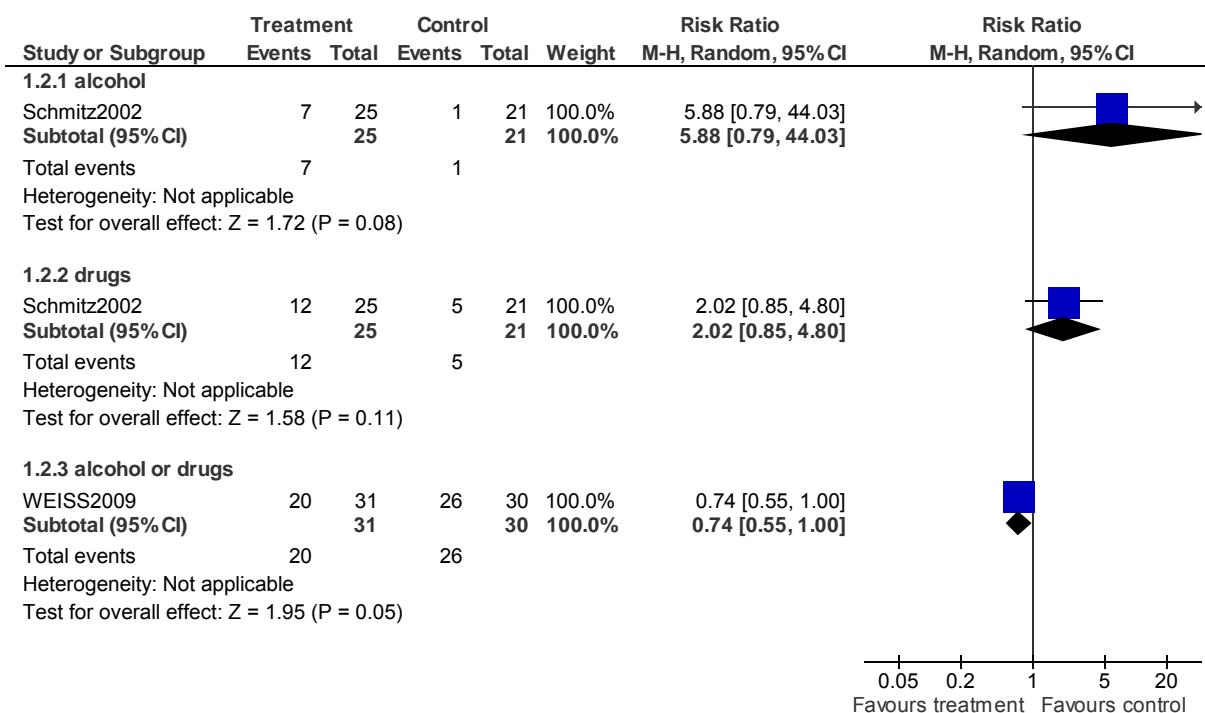
Psychological/psychosocial interventions - Forest plots

1 CBT vs. STANDARD CARE (critical outcomes)

1.1 Substance use: 1. Using substances - by 1 month

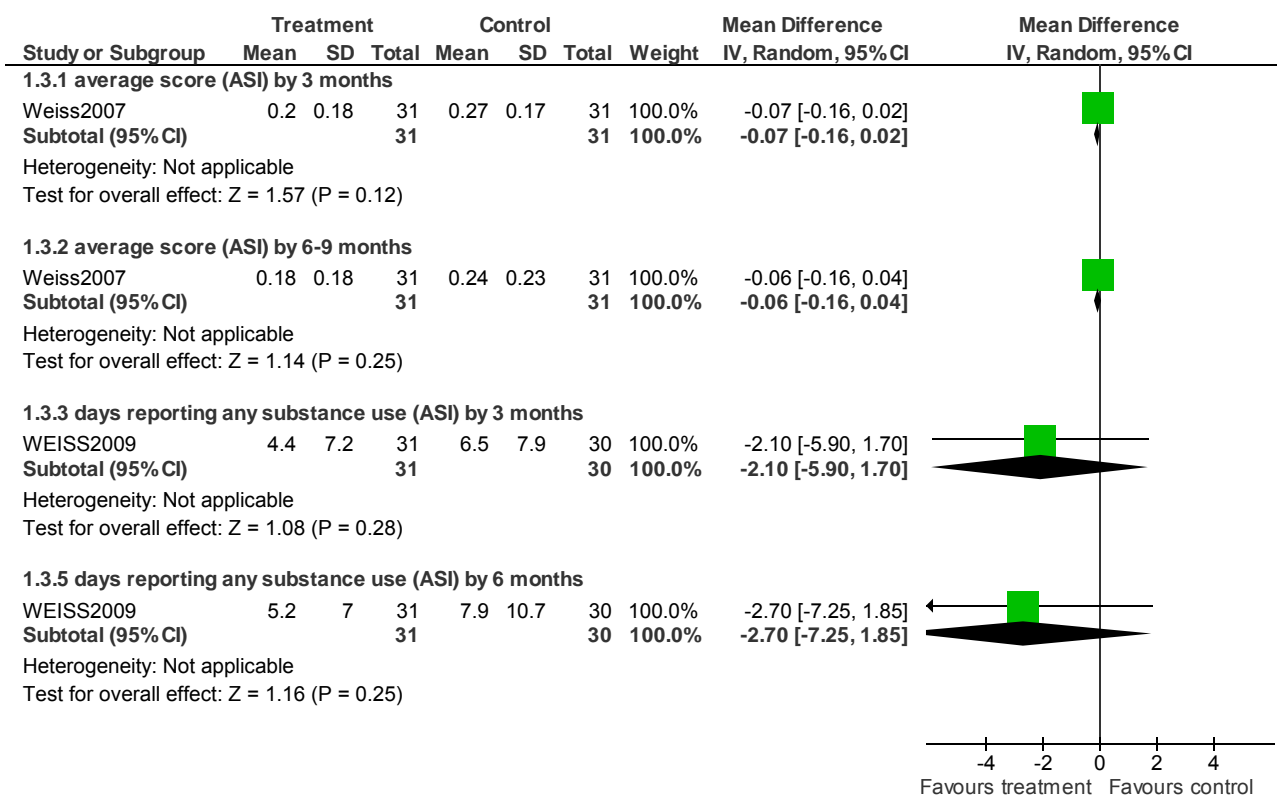


1.2 Substance use: 2. Using substances - by 3 months

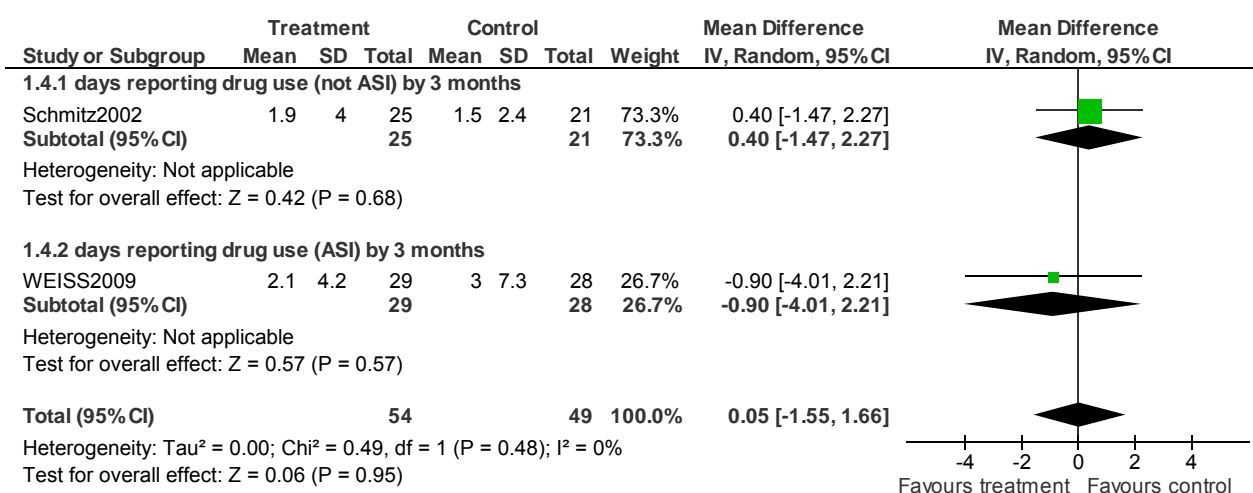


Psychological/psychosocial interventions - Forest plots

1.3 Substance use: 3. Any substance (skewed data)

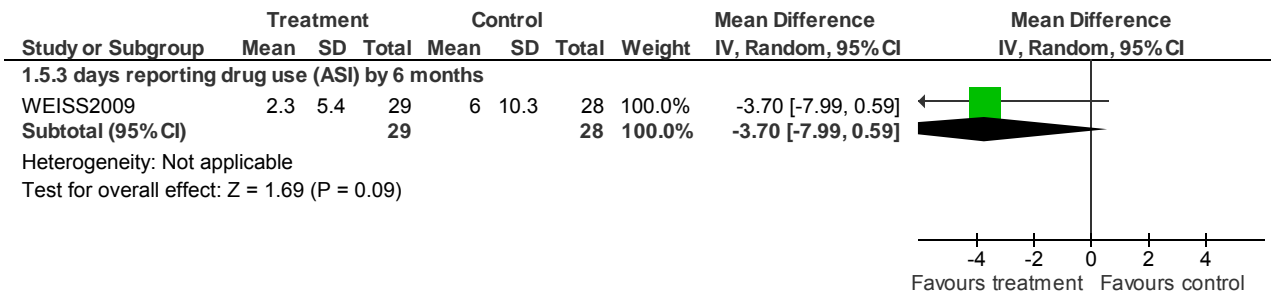


1.4 Substance use: 4. Drugs use - by 3 months (skewed data)

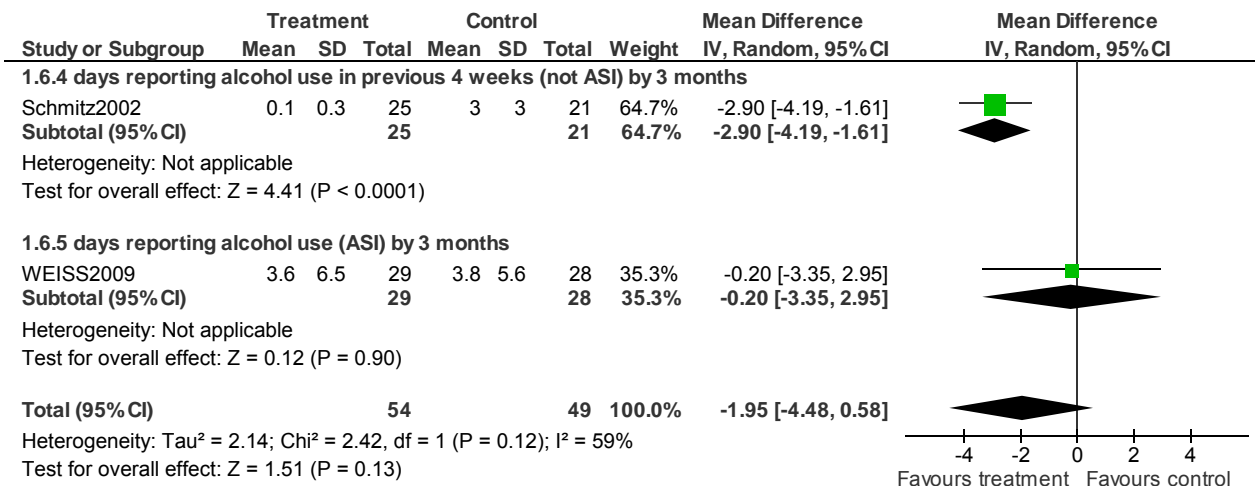


Psychological/psychosocial interventions - Forest plots

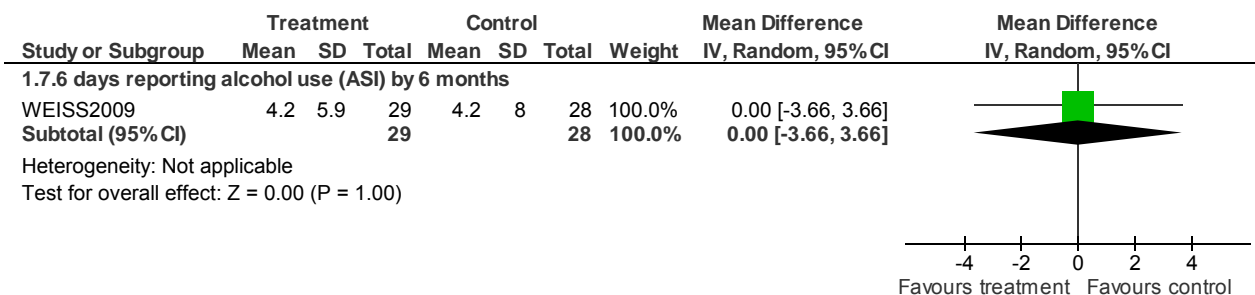
1.5 Substance use: 5. Drugs use - by 6 months (skewed data)



1.6 Substance use: 6. Alcohol use - by 3 months (skewed data)

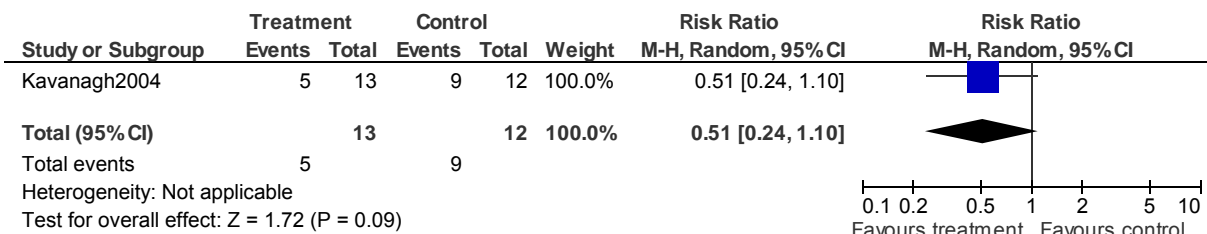


1.7 Substance use: 7. Alcohol use - by 6 months (skewed data)



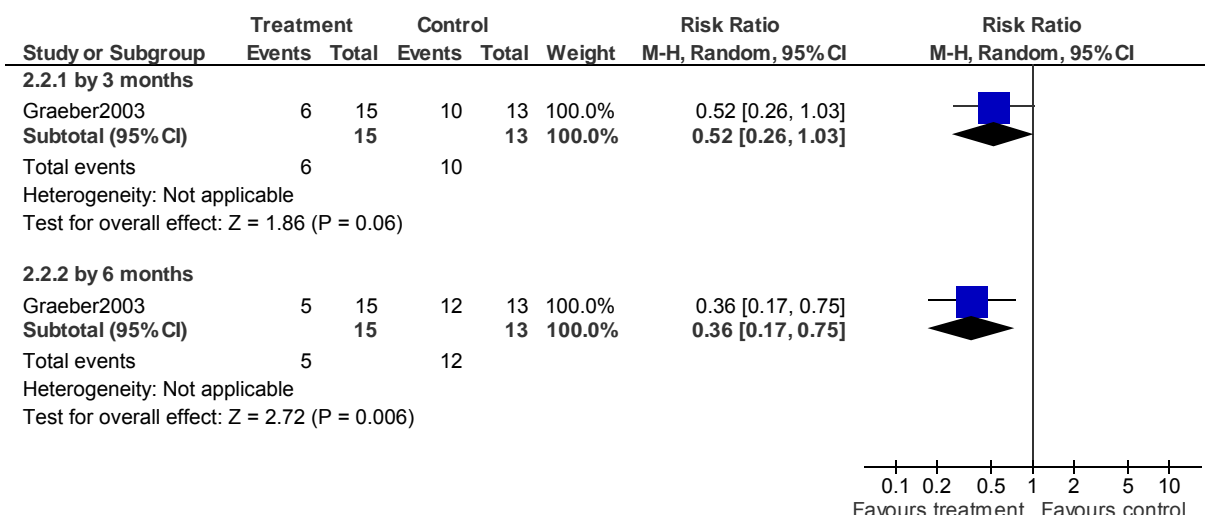
2 MOTIVATIONAL INTERVIEWING vs. STANDARD CARE (critical outcomes)

2.1 Substance use: 1. Not abstinent or not improved on all substances - by 12 months

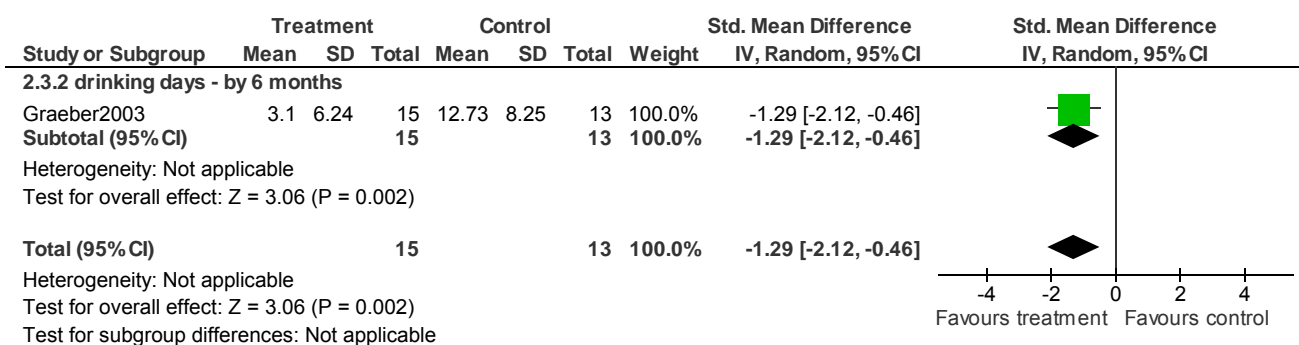


Psychological/psychosocial interventions - Forest plots

2.2 Substance use: 2. Not abstaining from alcohol

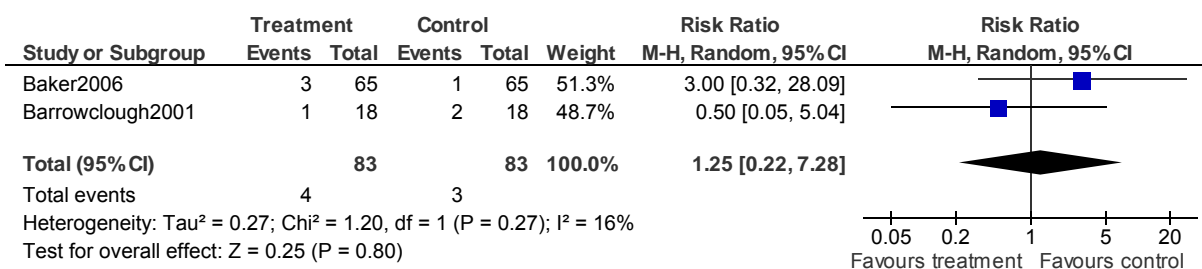


2.3 Substance use: 3. Other measures of alcohol use (skewed data)



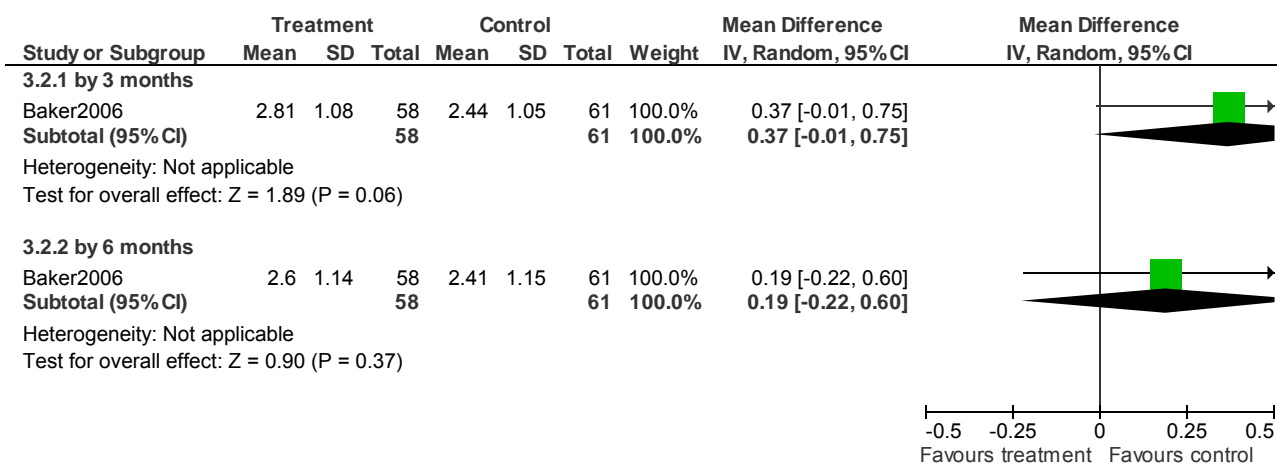
3 CBT + MOTIVATIONAL INTERVIEWING vs. STANDARD CARE (critical outcomes)

3.1 Death - by about 1 year

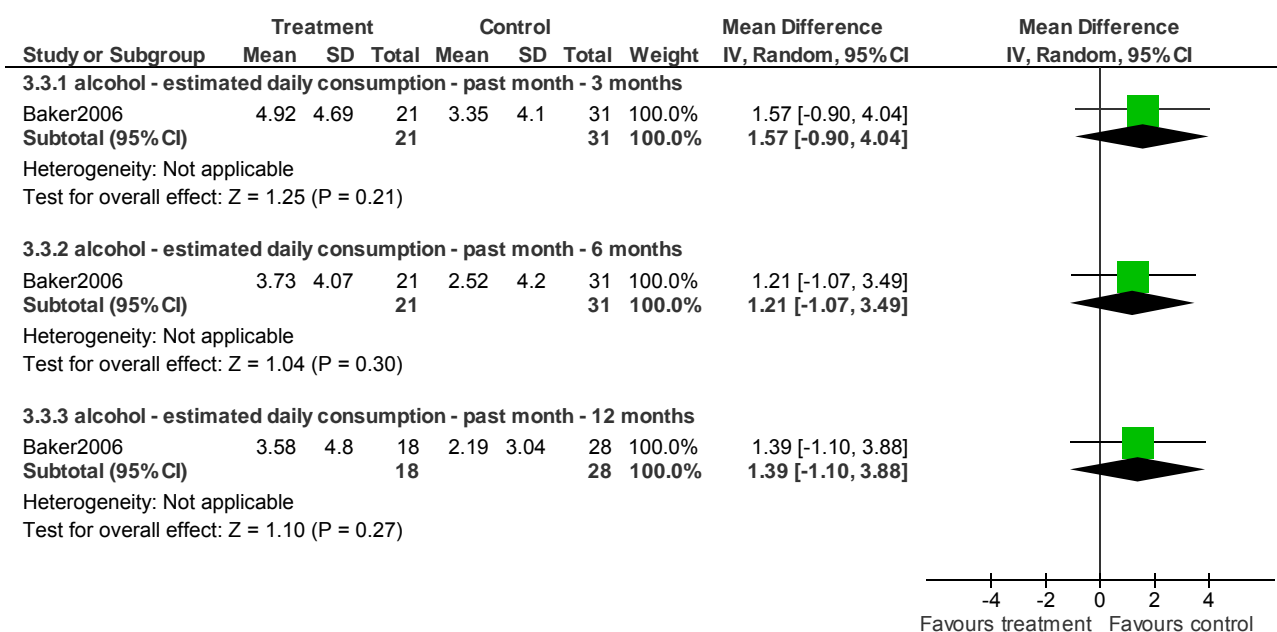


Psychological/psychosocial interventions - Forest plots

3.2 Substance use: 1. Average number of different drugs used during the past month (OTI, high = poor)

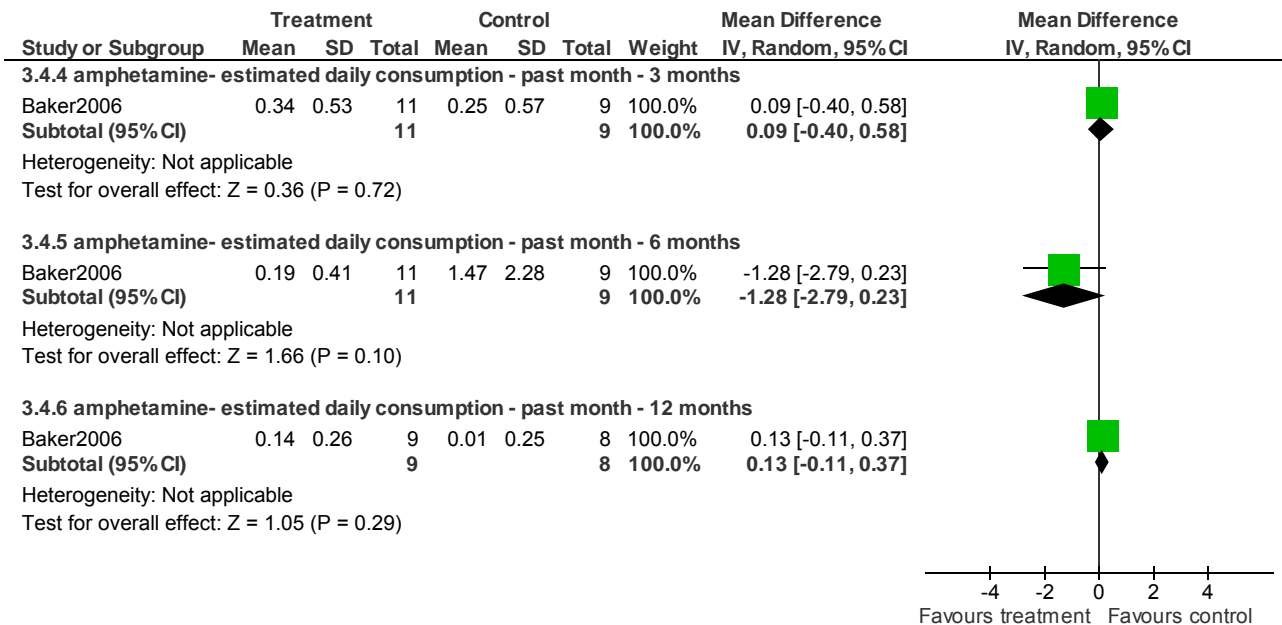


3.3 Substance use: 2. Average score - alcohol (skewed data)

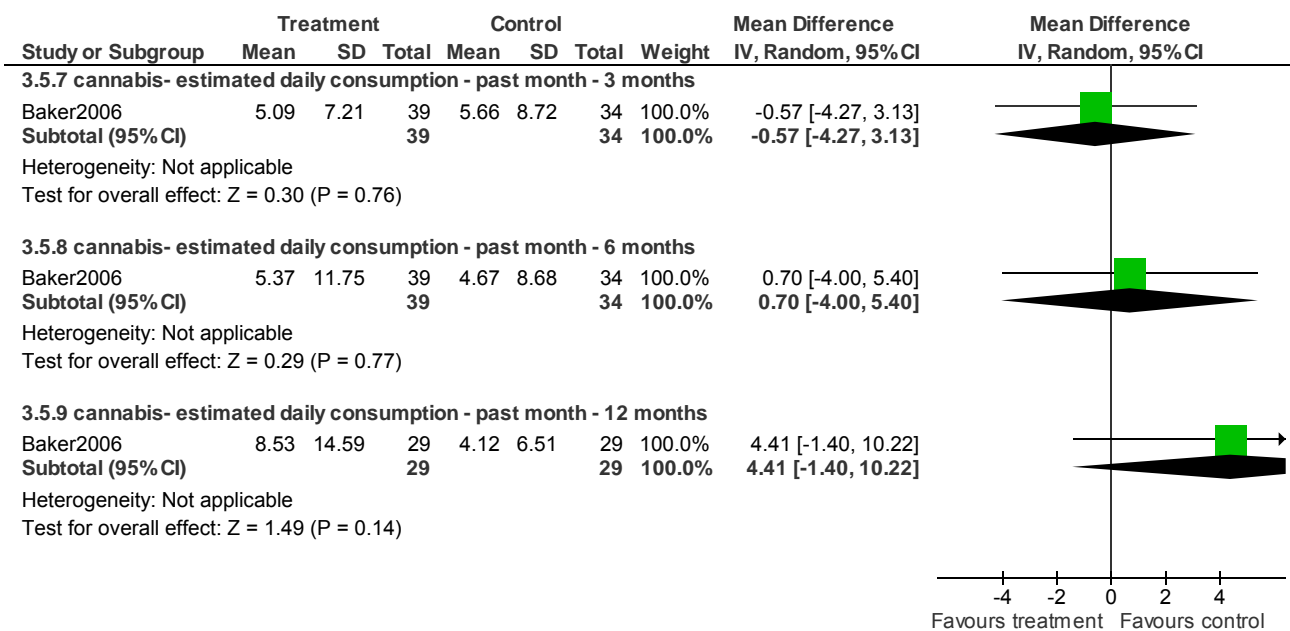


Psychological/psychosocial interventions - Forest plots

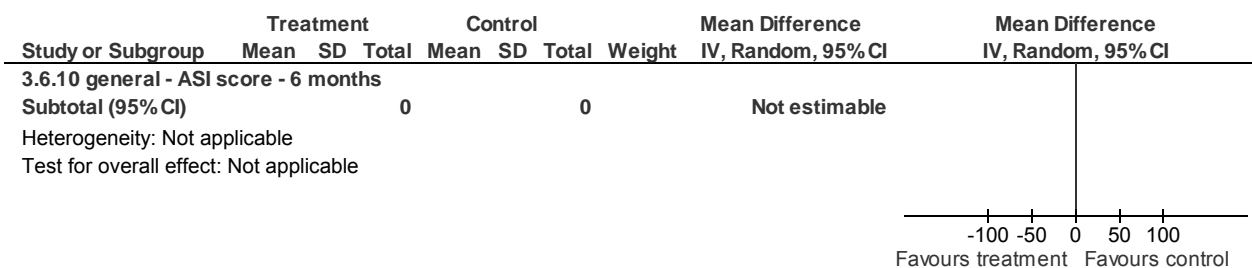
3.4 Substance use: 3. Average score - amphetamine (skewed data)



3.5 Substance use: 4. Average score - cannabis (skewed data)



3.6 Substance use: 5. ASI (skewed data)



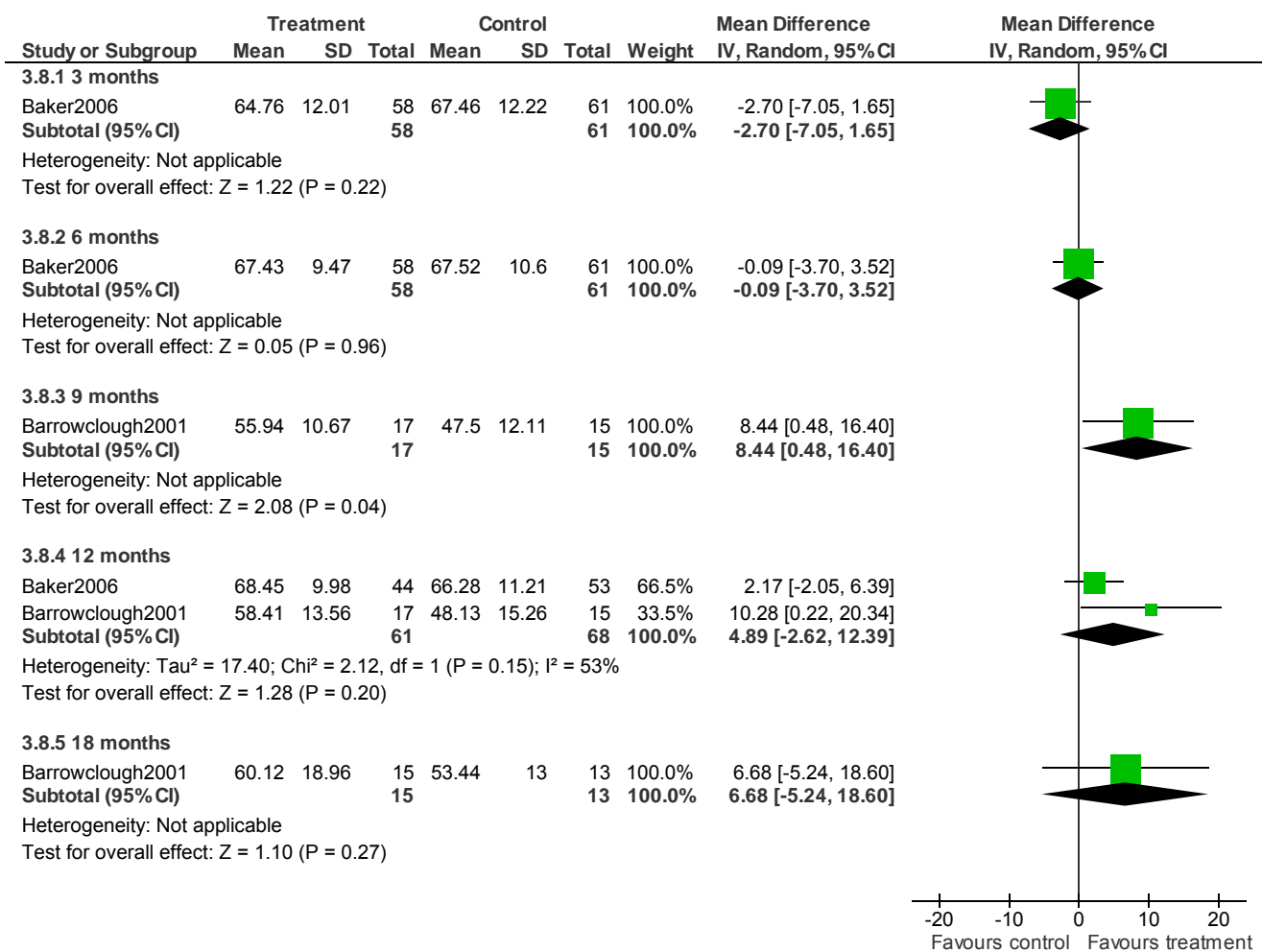
Psychological/psychosocial interventions - Forest plots

3.7 Substance use: 6. Average change in % days abstinent during & after treatment

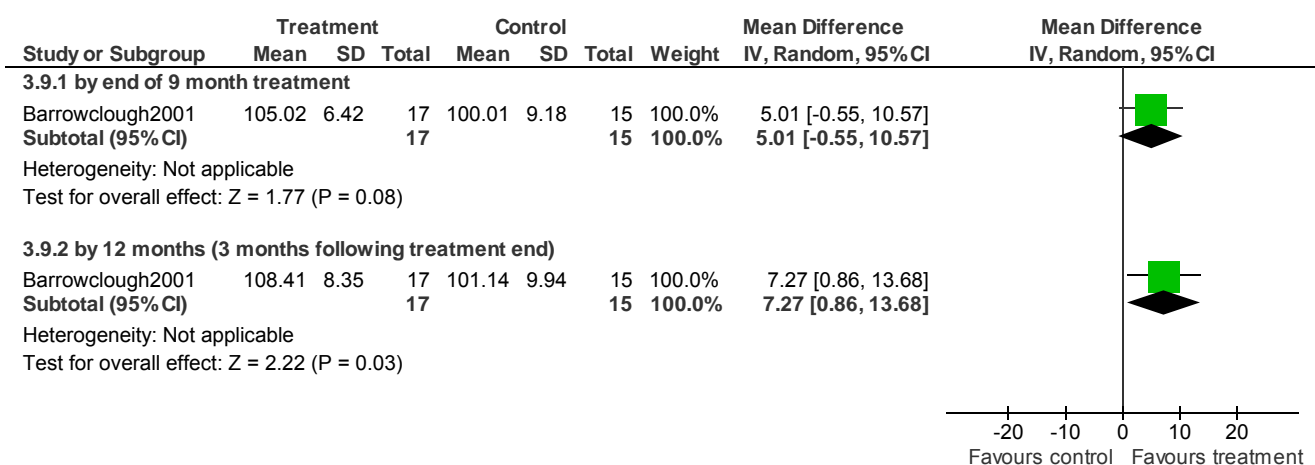
Study ID	Treatment Group	Median	range	N	Notes
Barrowclough2001	CBT + MI	19.99	-25.6 to 83.4	17	U=86.5 p<0.03 Non-parametric analysis. Data summed over 4 time periods (to 12 months) and subtracted from baseline.
	TAU	-6.52	-67.9-53.2	15	

Psychological/psychosocial interventions - Forest plots

3.8 Functioning: 1. Average global functioning score (GAF, low = poor)



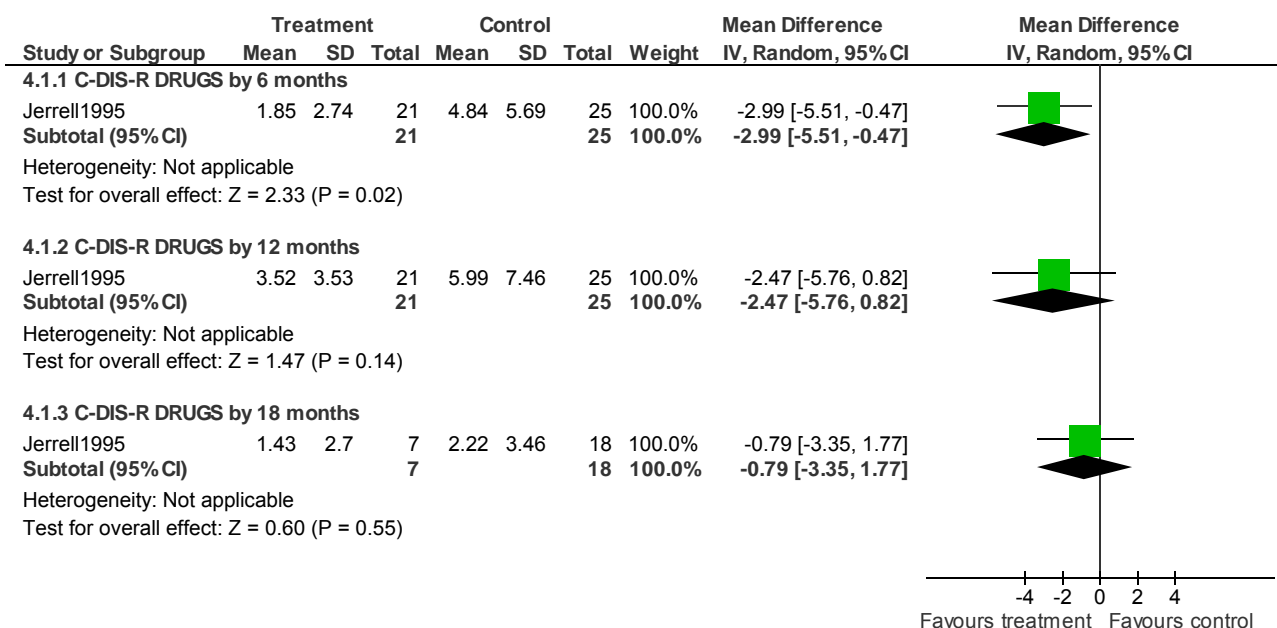
3.9 Functioning: 2. Average social functioning score (SFS, low = poor)



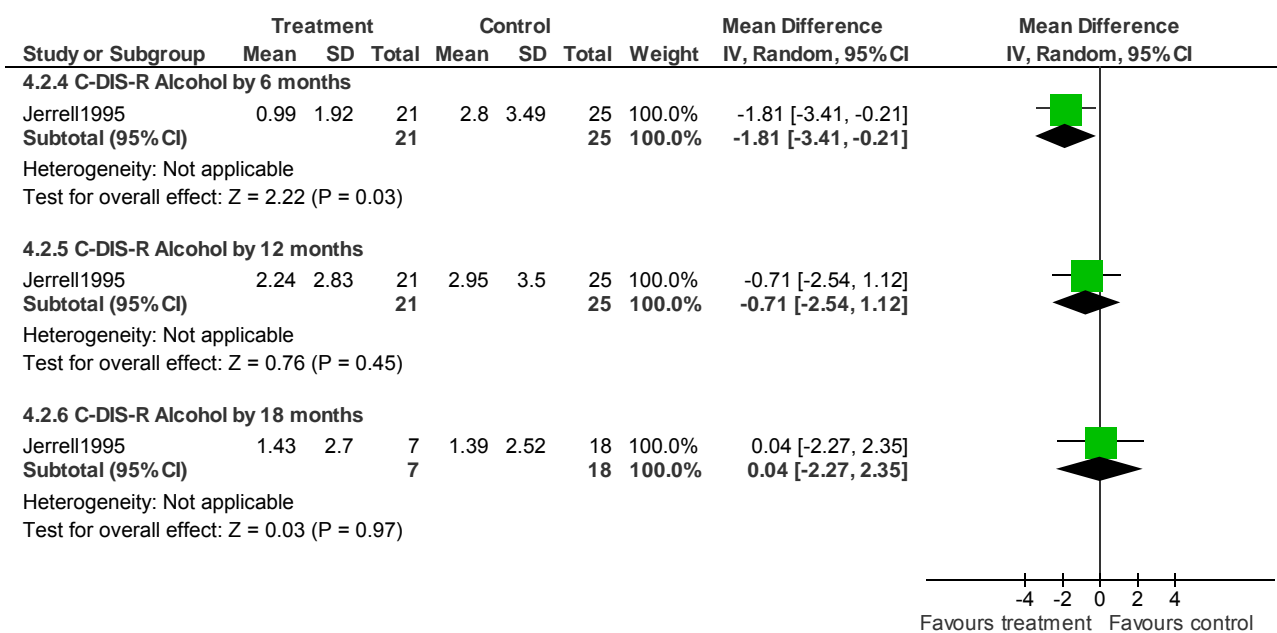
4 SOCIAL SKILLS/PSYCHOEDUCATION vs. STANDARD CARE (critical outcomes)

Psychological/psychosocial interventions - Forest plots

4.1 Substance use: 1. Average score - C-DIS-R Drugs (skewed data)

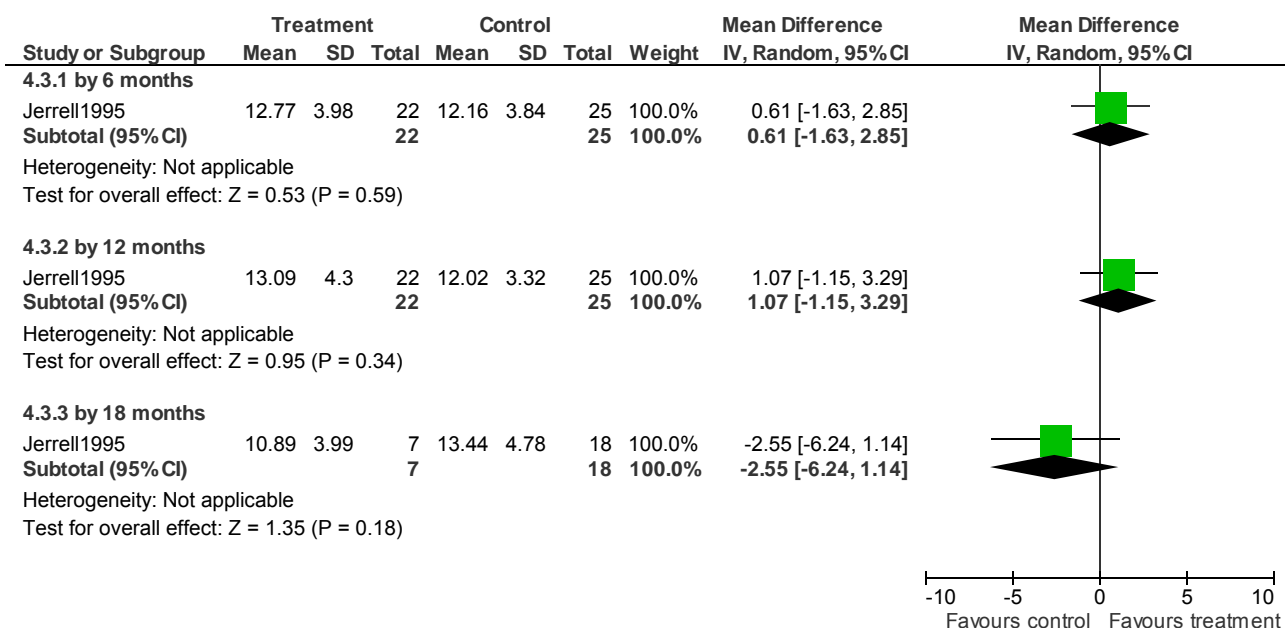


4.2 Substance use: 2. Average score - C-DIS-R Alcohol (skewed data)

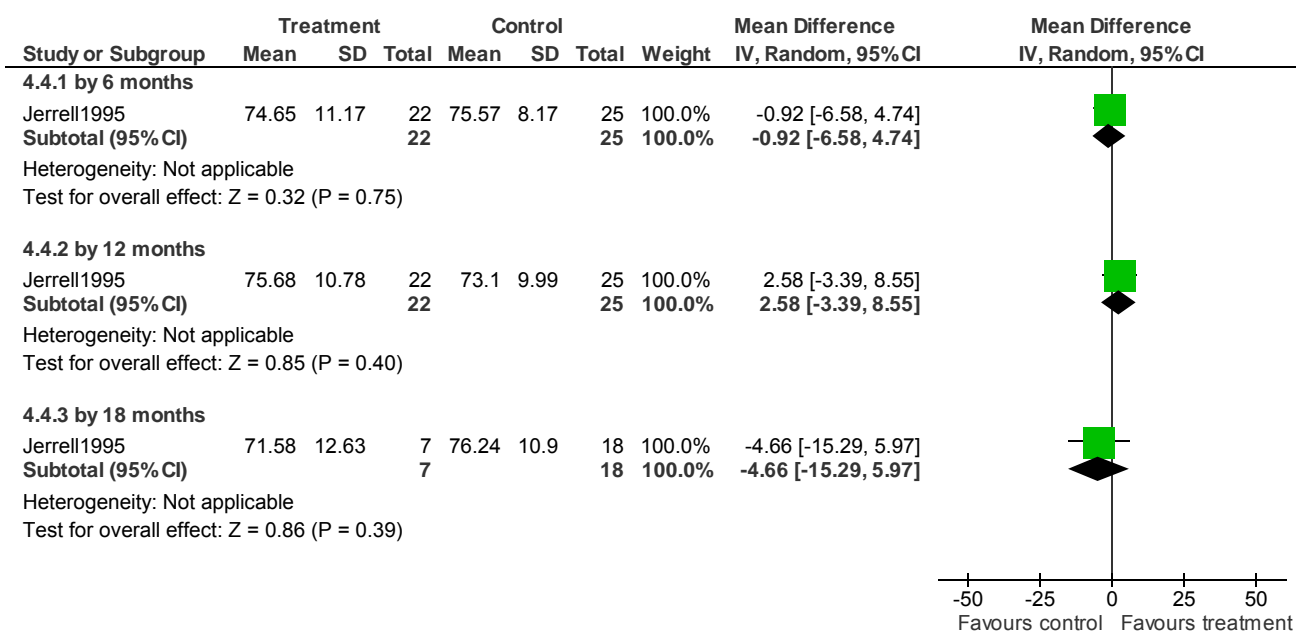


Psychological/psychosocial interventions - Forest plots

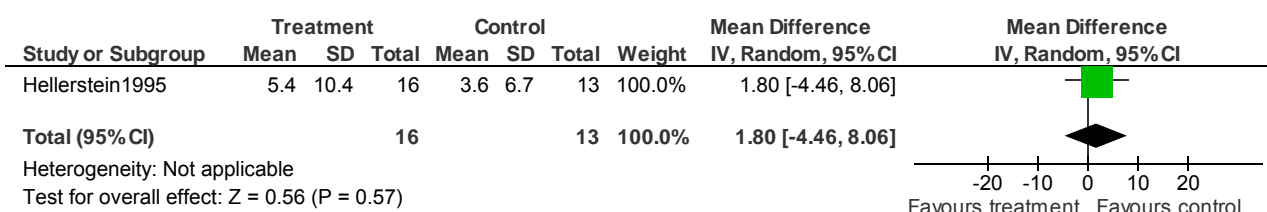
4.3 Functioning: 1. Average role functioning score (RFS, high = better functioning)



4.4 Functioning: 2. Average social adjustment score (SAS, high = better functioning)



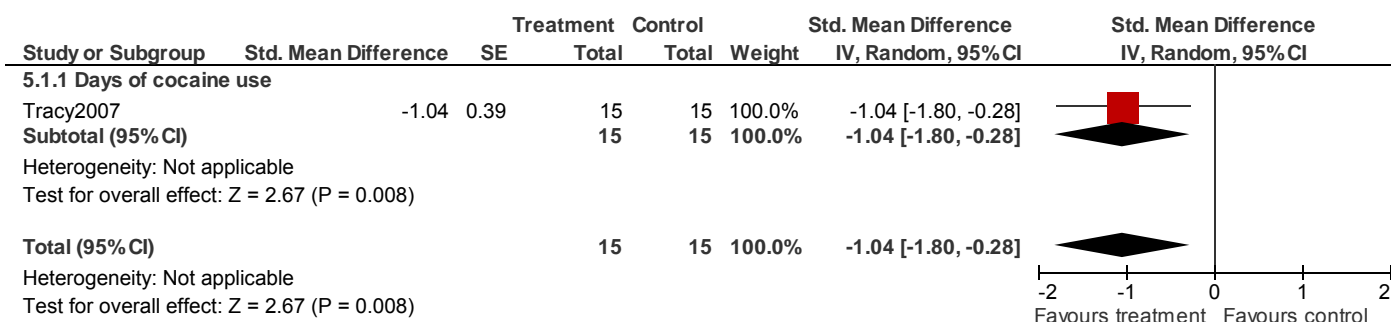
4.5 Service use: 1. Days in hospital (skewed data)



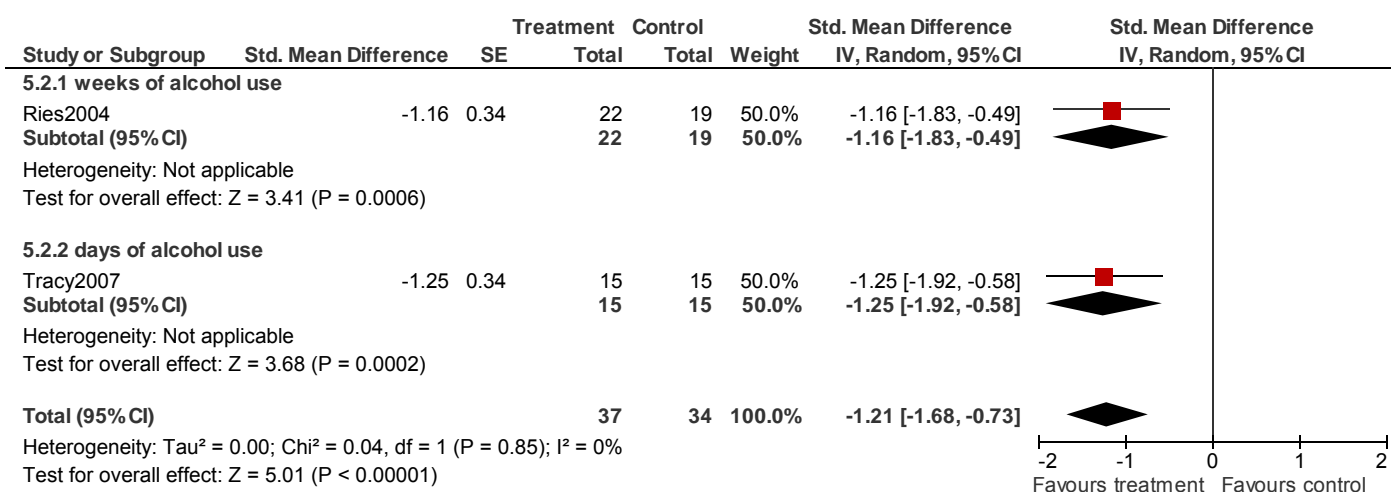
5 CONTINGENCY MANAGEMENT vs. STANDARD CARE (critical outcomes)

Psychological/psychosocial interventions - Forest plots

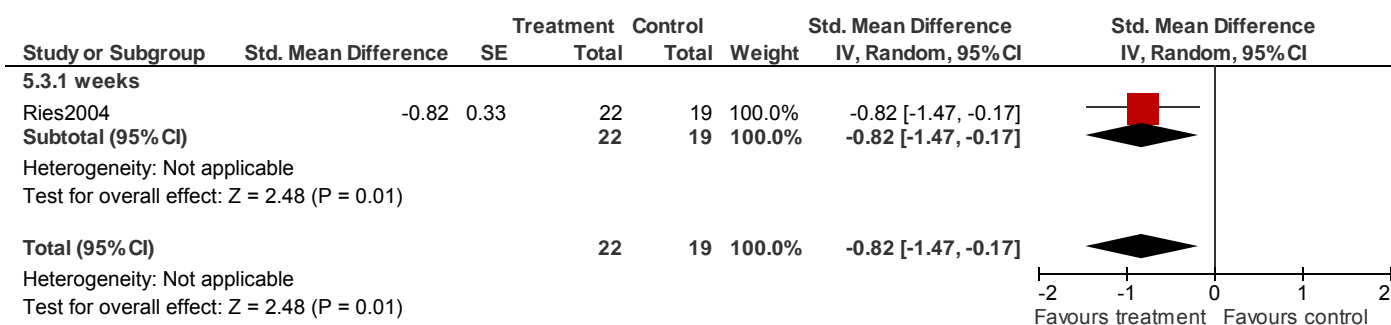
5.1 Substance use: 1. No. of days/weeks of drug use (confirmation by urine drug screen)



5.2 Substance use: 2. No. of days/weeks of alcohol use (confirmation by breathalyzer)



5.3 Substance use: 3. No. of days/weeks using both drugs and alcohol (confirmation by urine or breathalyzer)



5.4 Substance use: 4. Alcohol positive breathalyzer samples

