

## **APPENDIX 14: CLINICAL EVIDENCE FOREST PLOTS**

Where available, data were extracted from the review developed for the Cochrane Collaboration by Cleary and colleagues (Cleary, M., Hunt, G. E., Matheson, S. L., *et al.* [2008] Psychosocial interventions for people with both severe mental illness and substance misuse. *Cochrane Database of Systematic Reviews*, Issue 1. DOI: 10.1002/14651858.CD001088.pub2), otherwise from the original study publication (see Appendix 13 for further details about each study).

## APPENDIX 14: CLINICAL EVIDENCE FOREST PLOTS

### Service models

1	Integrated service models versus non-integrated service models (critical outcomes) .....	2
2	Integrated service models versus non-integrated service models (non-critical outcomes).....	7
3	Integrated ACT versus standard case management (critical outcomes).....	9
4	Integrated ACT versus standard case management (non-critical outcomes) .....	14
5	Staffed accommodation versus standard care (critical outcomes).....	17

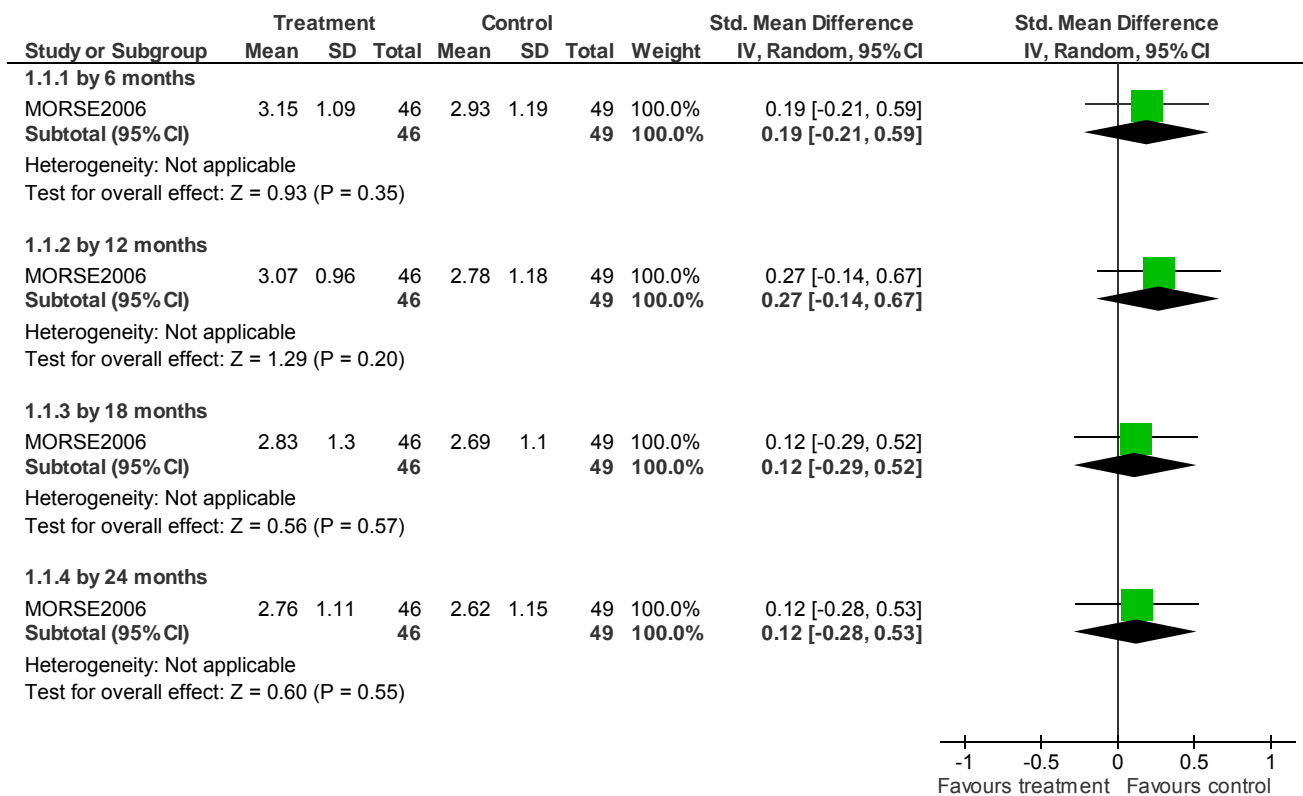
### Psychological and psychosocial interventions

1	CBT versus standard care (critical outcomes).....	21
2	CBT versus standard care (non-critical outcomes) .....	24
3	Motivational interviewing versus standard care (critical outcomes).....	27
4	Motivational interviewing versus standard care (non-critical outcomes) .....	29
5	CBT + motivational interviewing versus standard care (critical outcomes) .....	29
6	CBT + motivational interviewing versus standard care (non-critical outcomes).....	35
7	Group psychoeducation versus standard care (critical outcomes) .....	41
8	Group psychoeducation versus standard care (non-critical outcomes).....	44
9	Contingency management versus standard care (critical outcomes).....	44

# Service delivery models - Forest plots

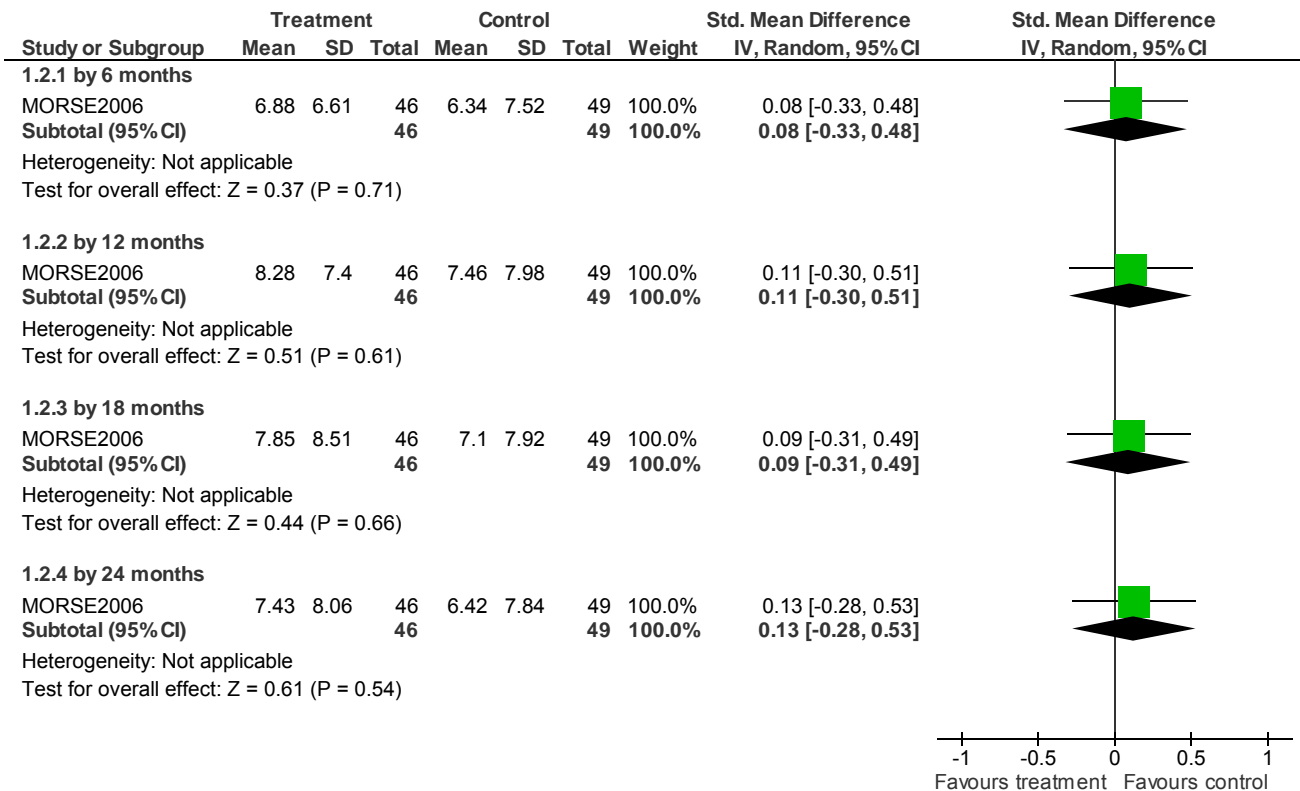
## 1 INTEGRATED SERVICE MODELS versus NON-INTEGRATED SERVICE MODELS (critical outcomes)

### 1.1 versus Standard care - Substance use: 1. Substance use rating (high=poor)



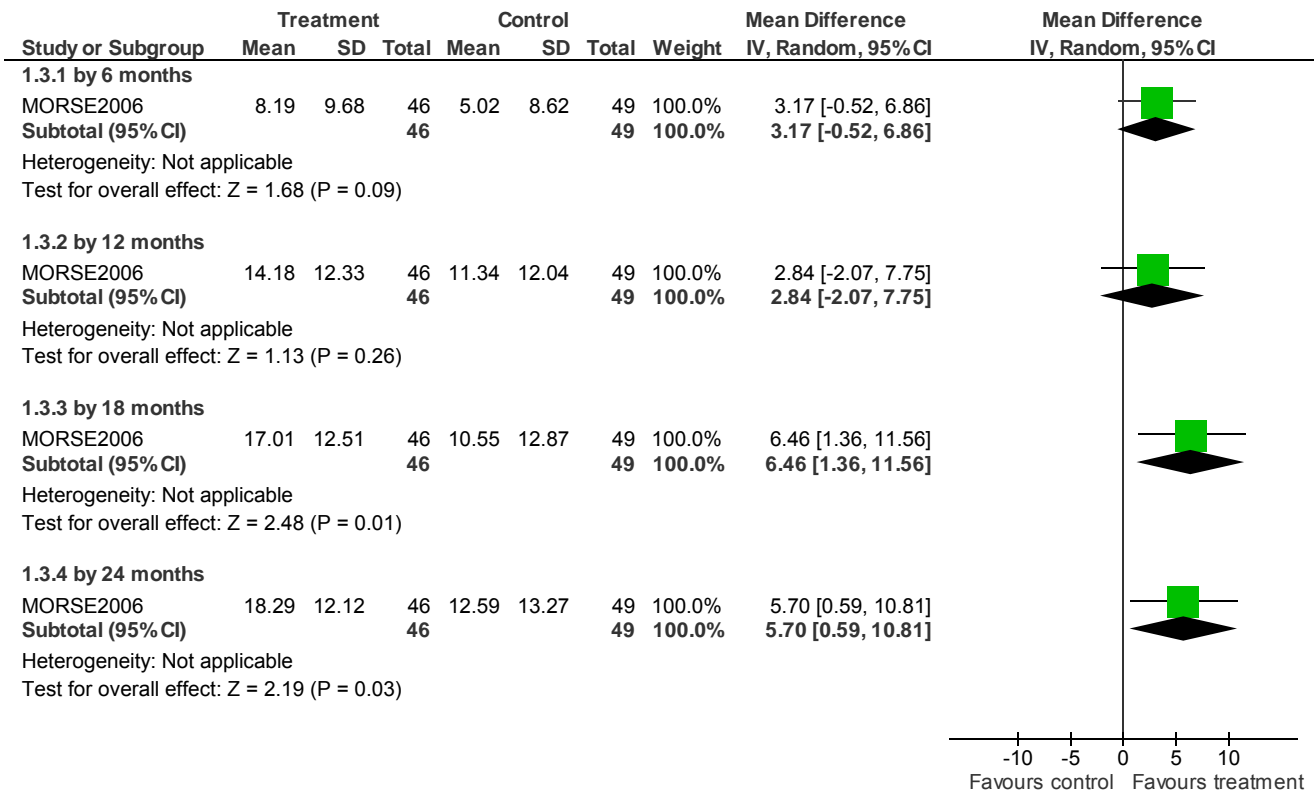
## Service delivery models - Forest plots

### 1.2 versus Standard care - Substance use: 2. Days used substances



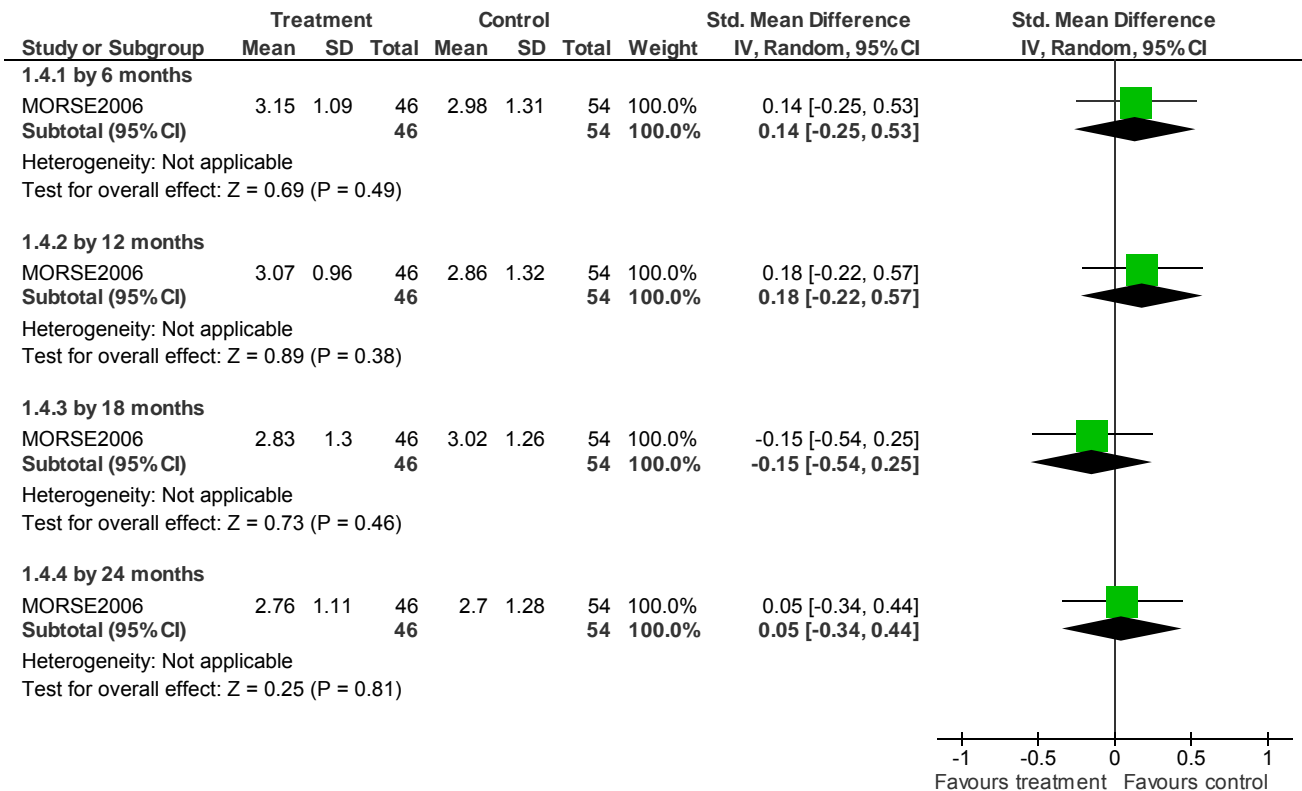
## Service delivery models - Forest plots

### 1.3 versus Standard care - Service use: 1. Days in stable community residences (not in hospital)



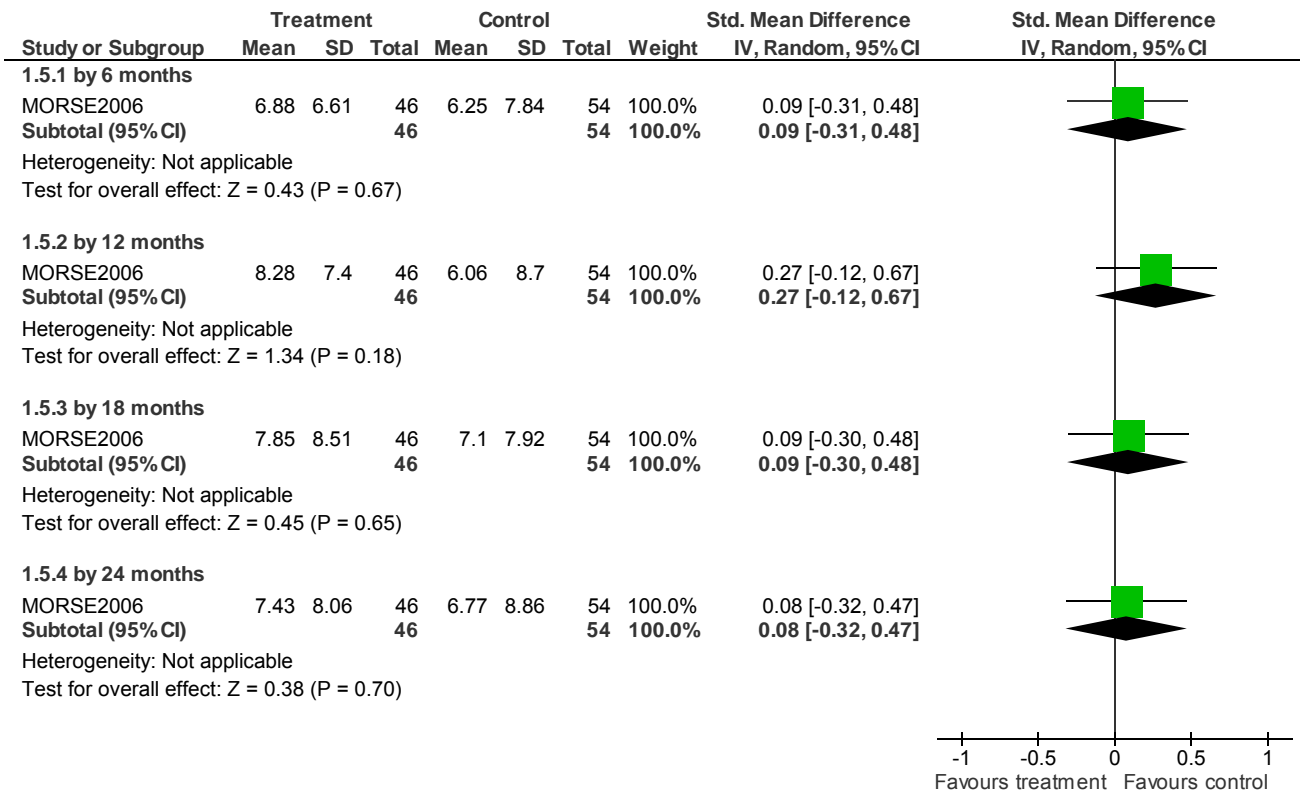
## Service delivery models - Forest plots

### 1.4 versus Non-integrated ACT - Substance use: 1. Substance use rating (high=poor)



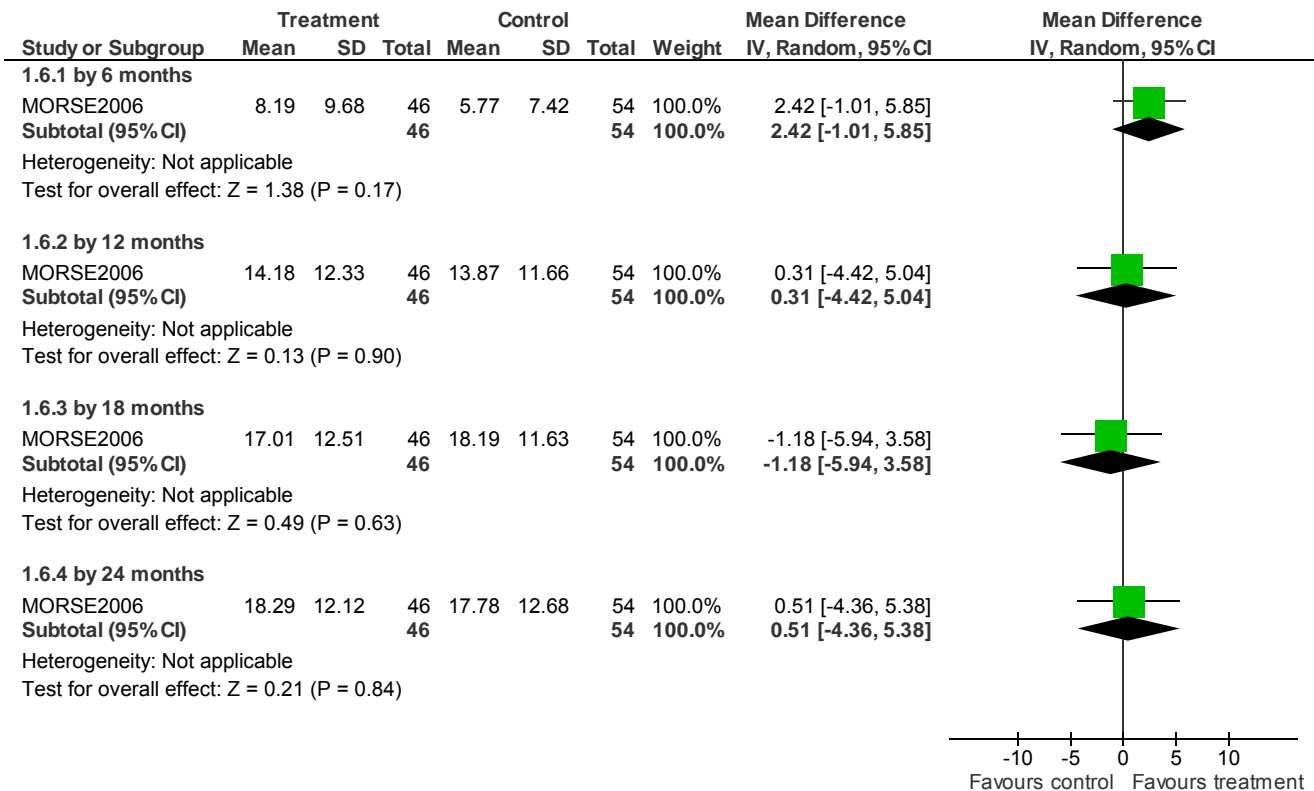
## Service delivery models - Forest plots

### 1.5 versus Non-integrated ACT - Substance use: 2. Days used substances



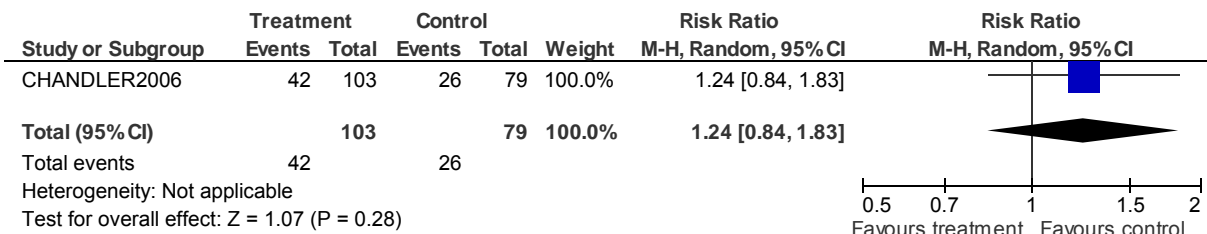
## Service delivery models - Forest plots

### 1.6 versus Non-integrated ACT - Service use: 1. Days in stable community residences (not in hospital)

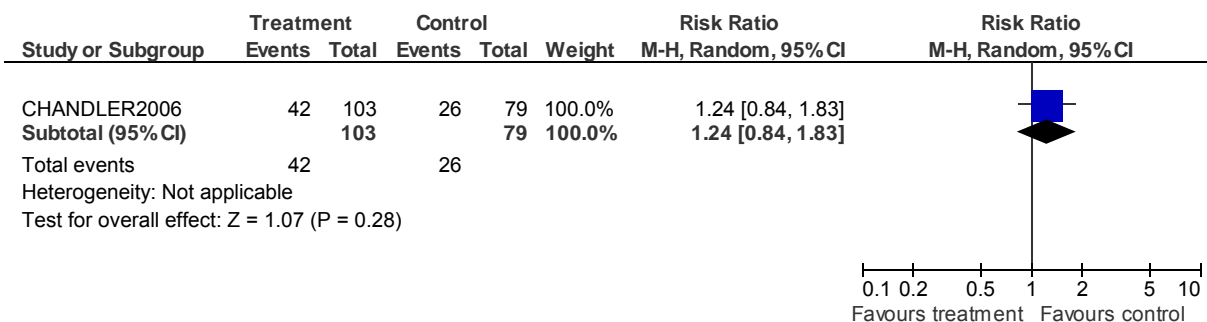


### 2 INTEGRATED SERVICE MODELS versus STANDARD CARE (non-critical outcomes)

#### 2.1 Lost to treatment - by 36 months



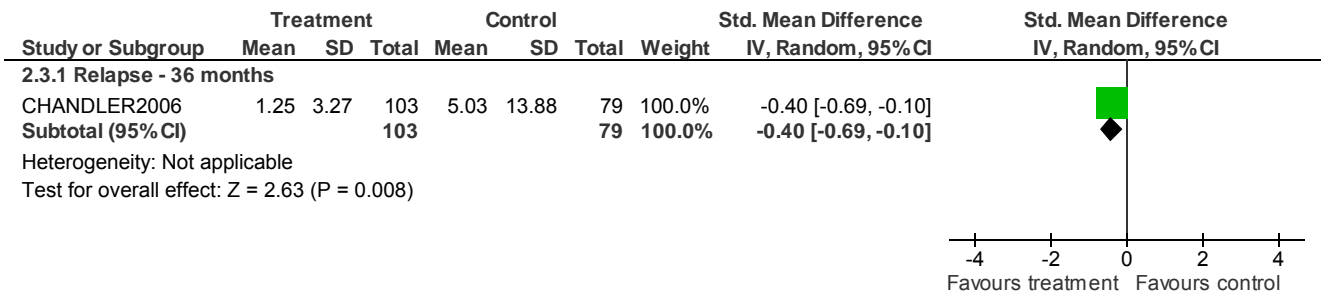
#### 2.2 Lost to evaluation - by 36 months



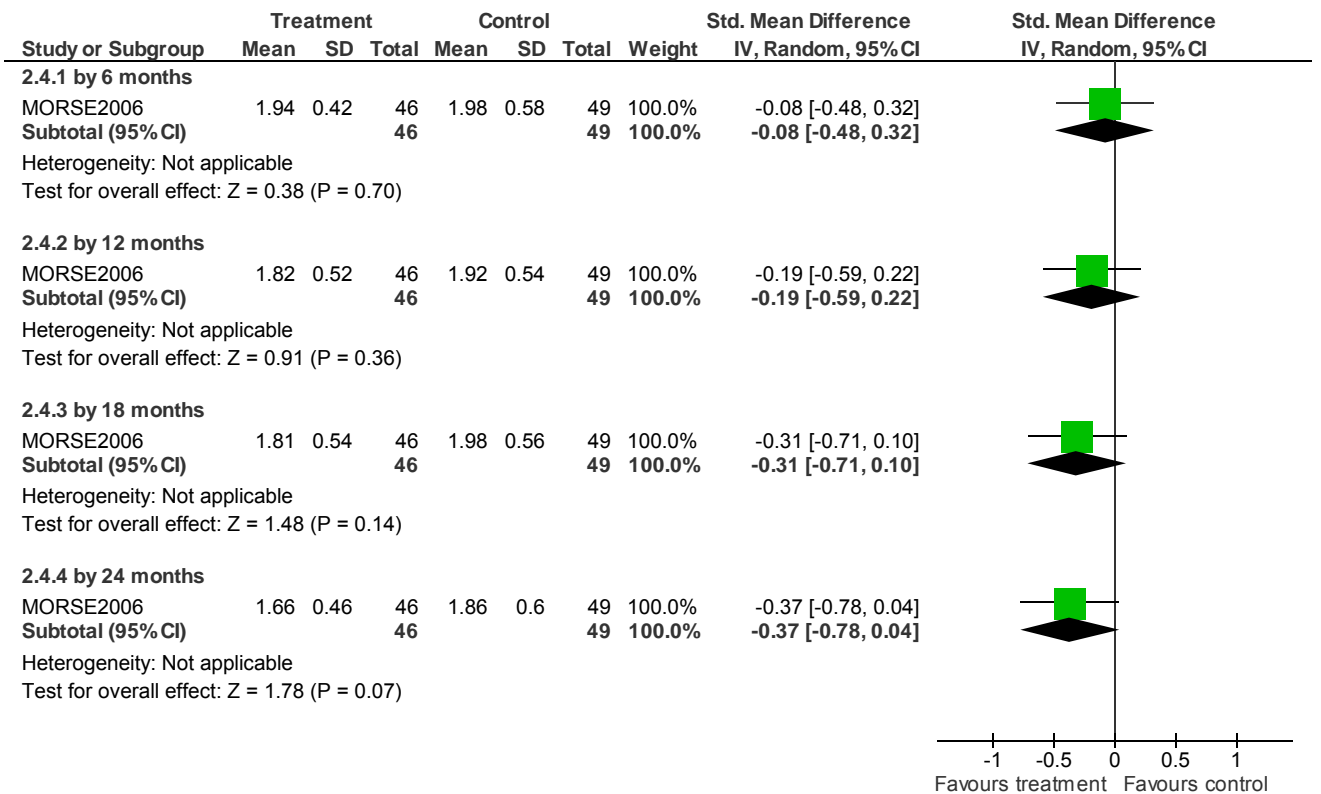


## Service delivery models - Forest plots

### 2.3 Mental state: 1. Relapse (hospitalisation days and crisis care) (skewed data)

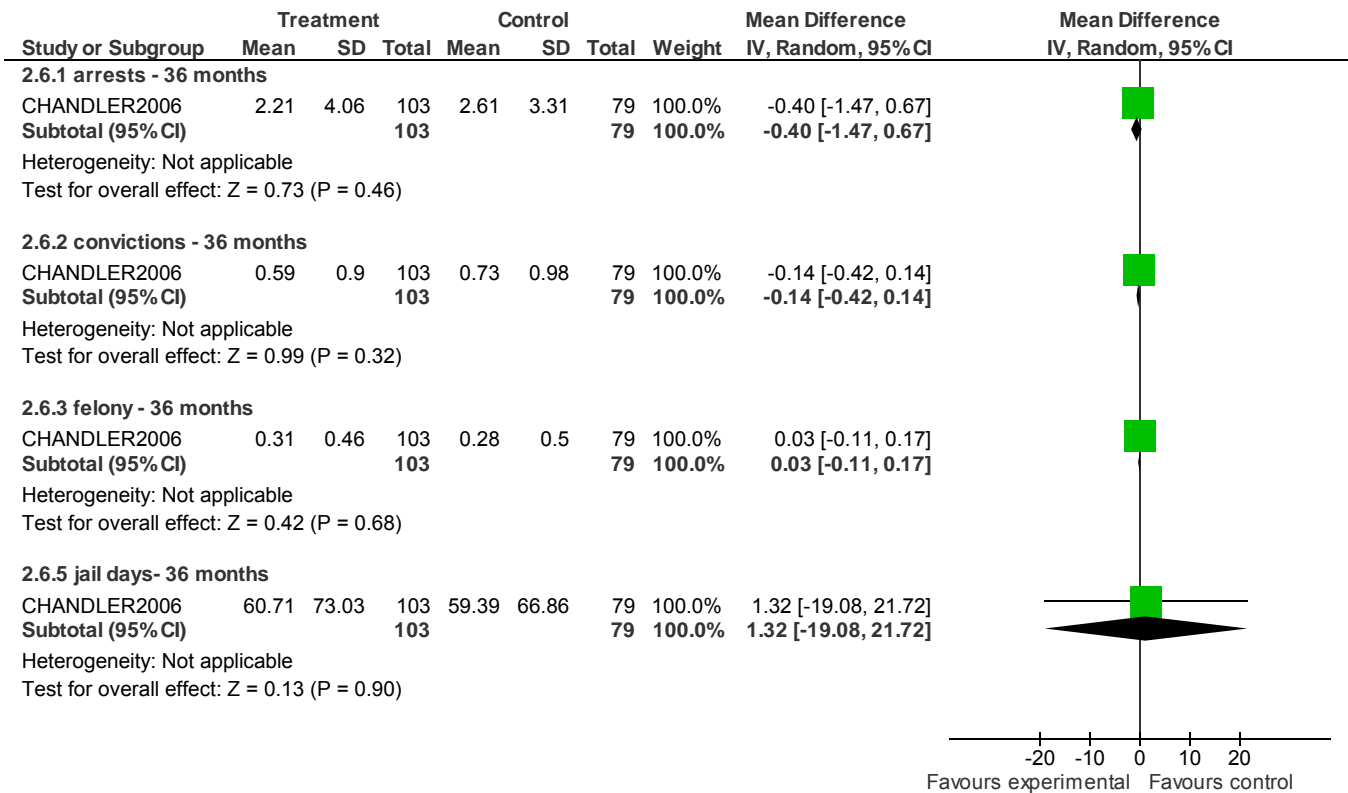


### 2.4 Mental state: 2. Total symptoms (BPRS, high=poor)

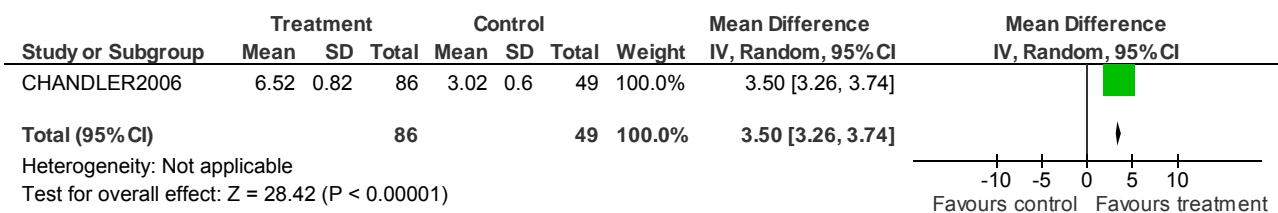


## Service delivery models - Forest plots

### 2.6 Functioning: 2. Forensic measures (skewed data)

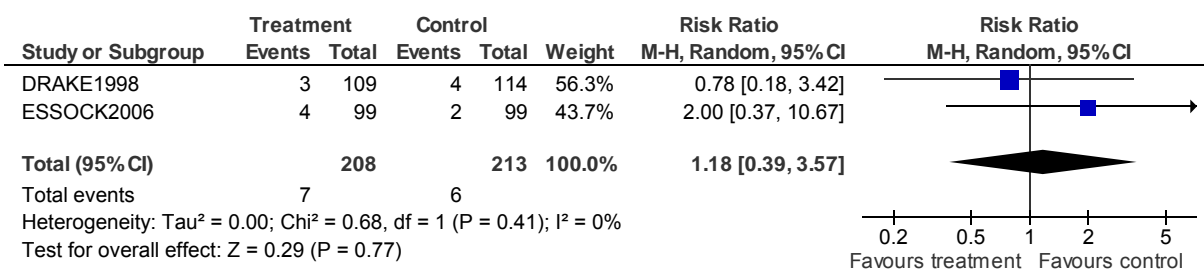


### 2.7 Functioning: 3. Outpatient medication service (mean number of hours) - 36 months



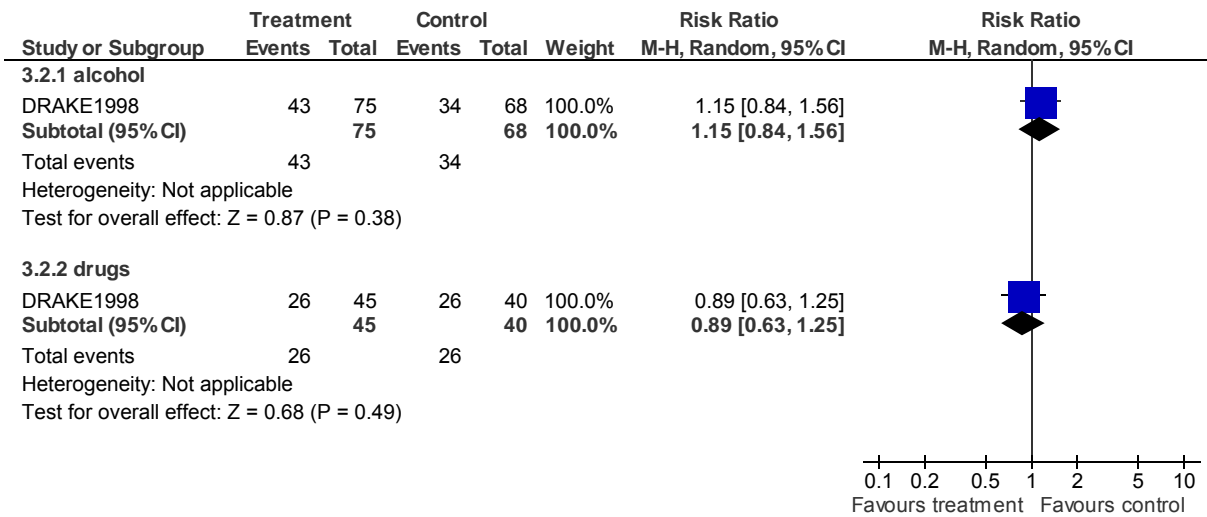
## 3 INTEGRATED ACT versus STANDARD CASE MANAGEMENT (critical outcomes)

### 3.1 Death - by 36 months



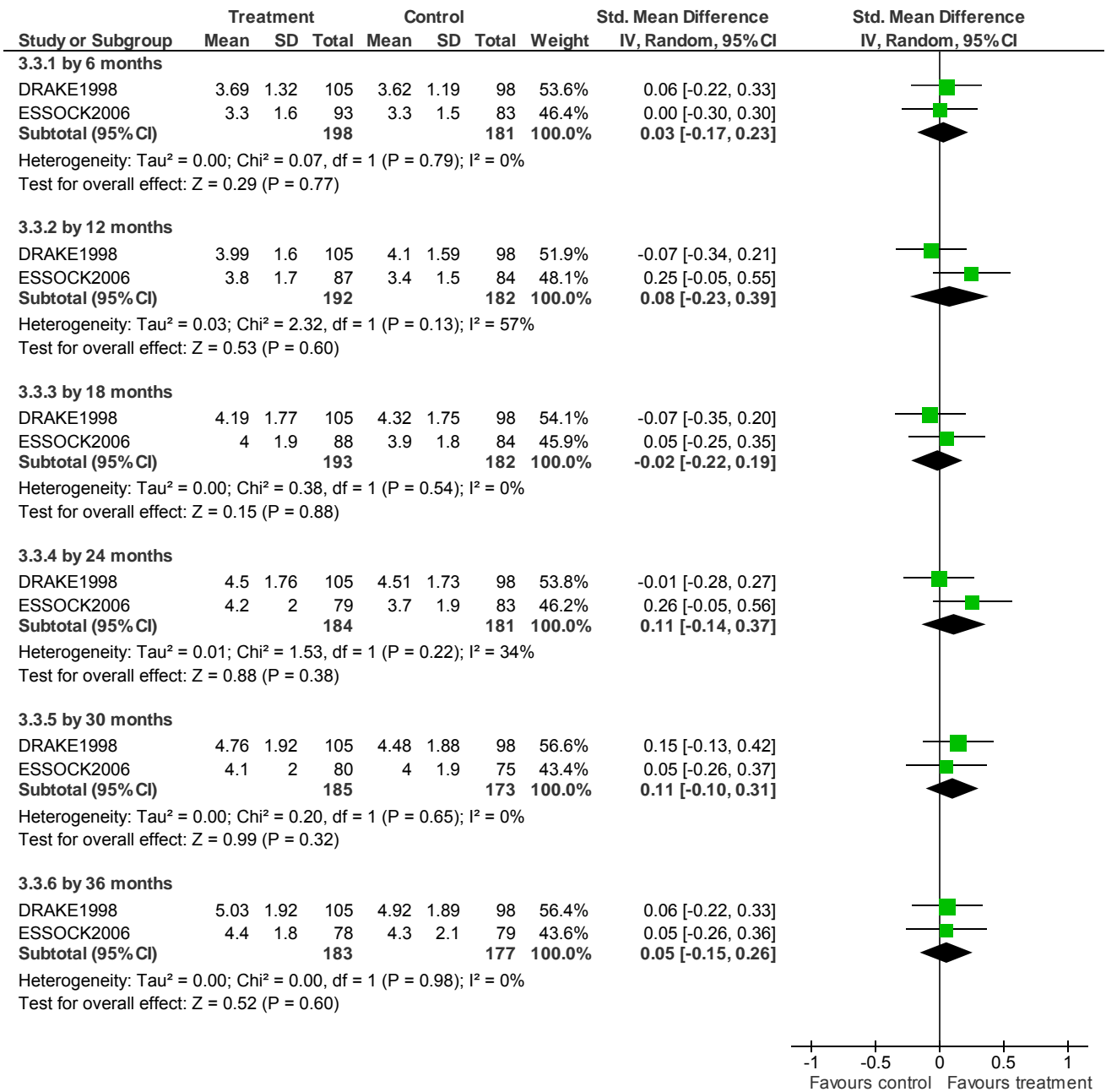
## Service delivery models - Forest plots

### 3.2 Substance use: 1. Not in remission - by 36 months



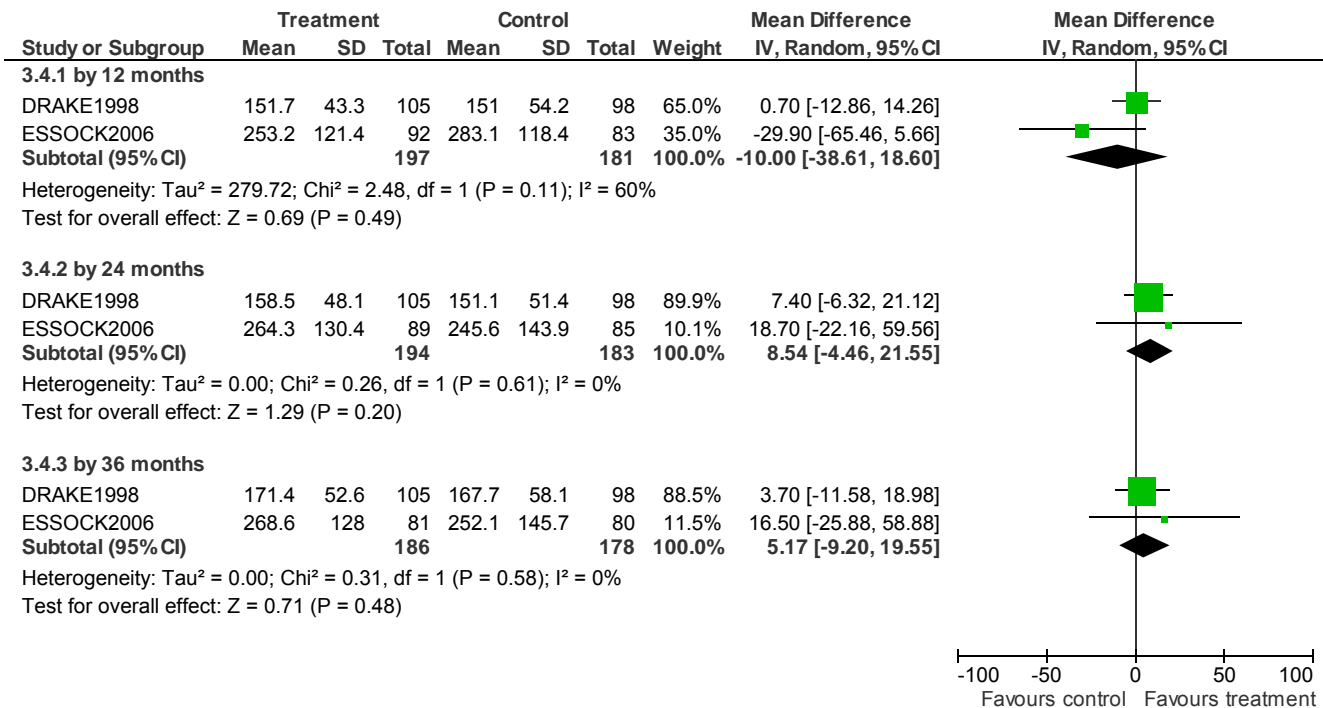
## Service delivery models - Forest plots

### 3.3 Substance use: 2. Substance misuse (SATS, low=poor)



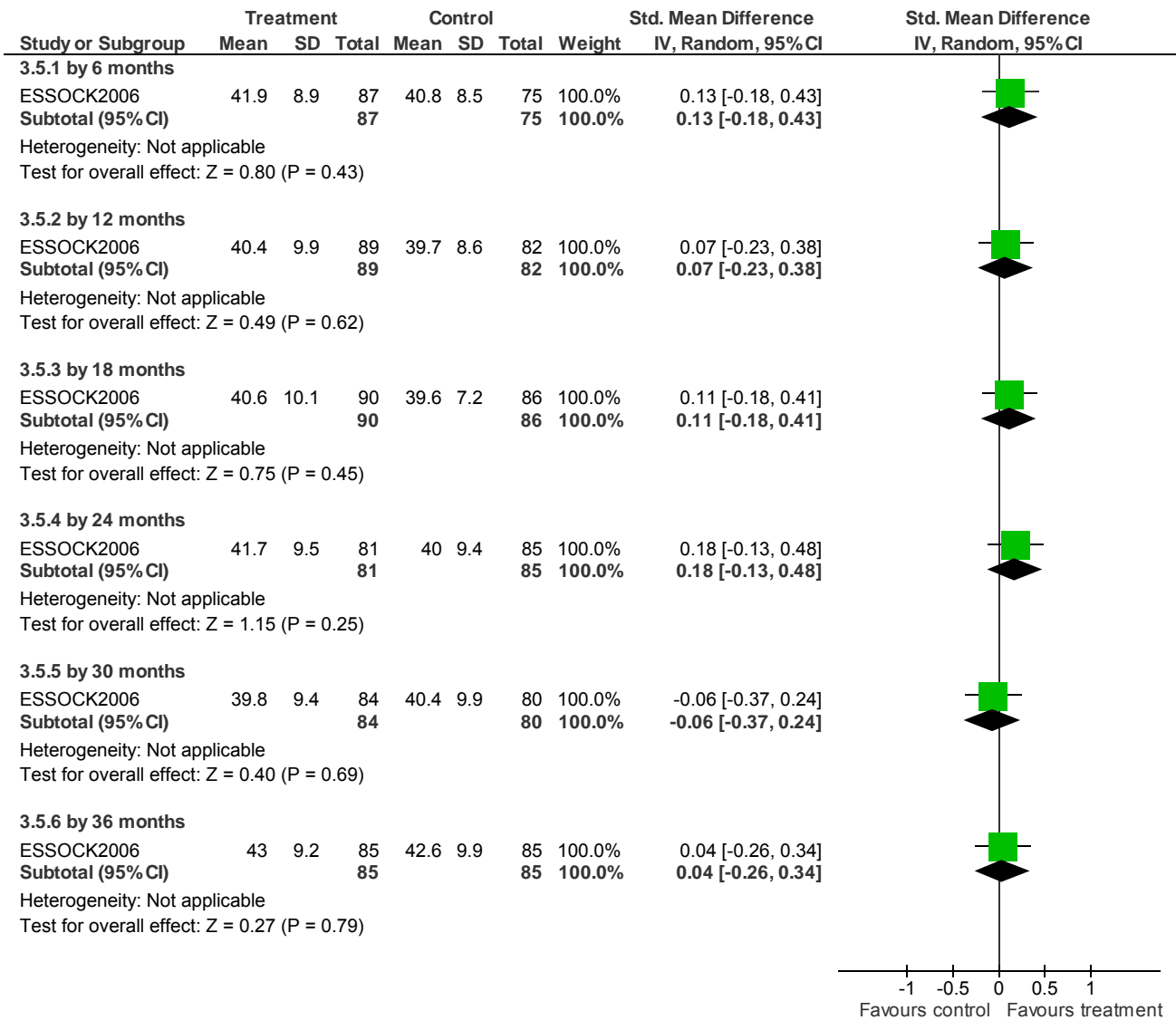
## Service delivery models - Forest plots

### 3.4 Service use: 1. Days in stable community residences (not in hospital)



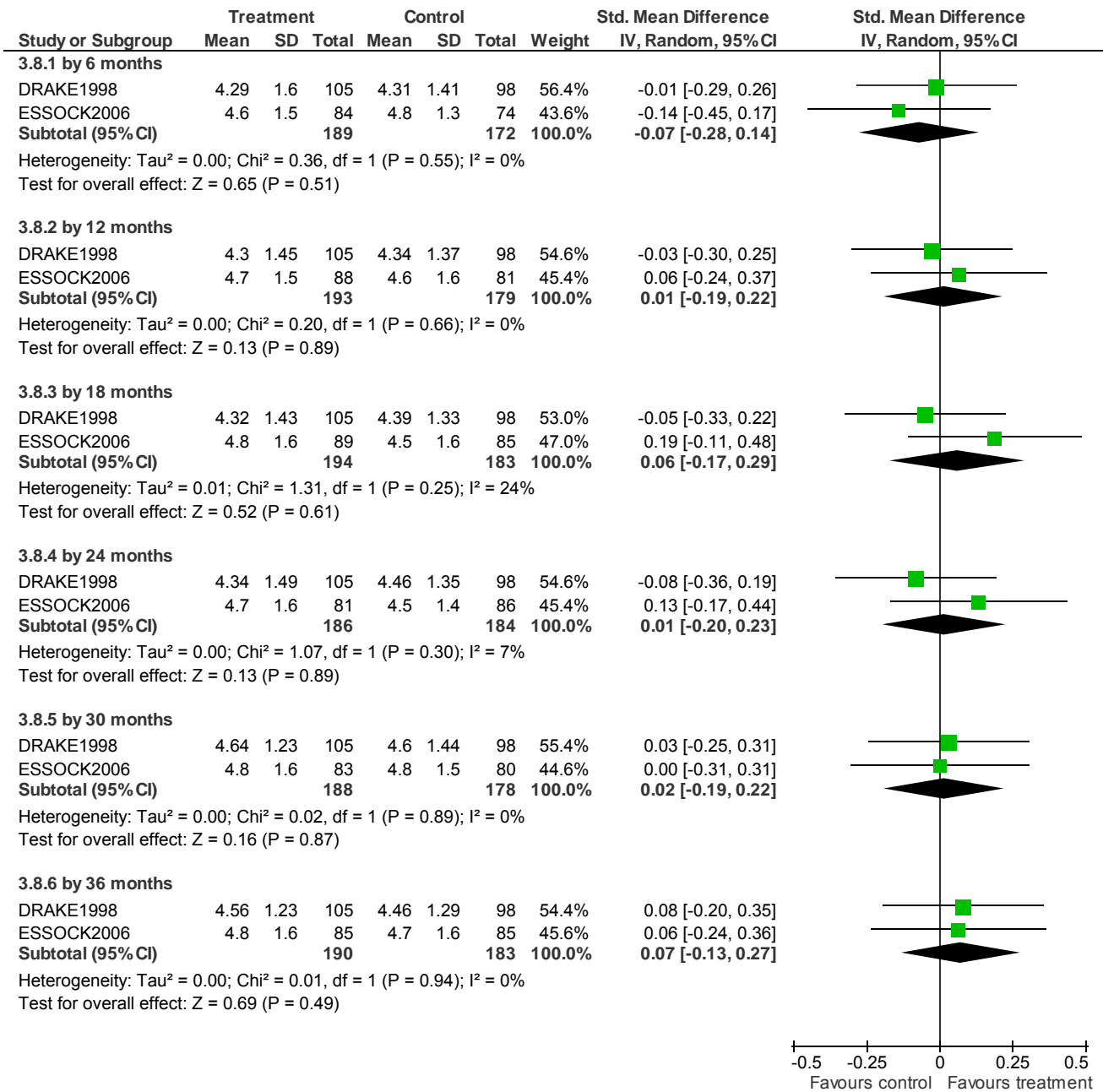
## Service delivery models - Forest plots

### 3.5 Functioning: 1. Average general score (GAS, low=poor)



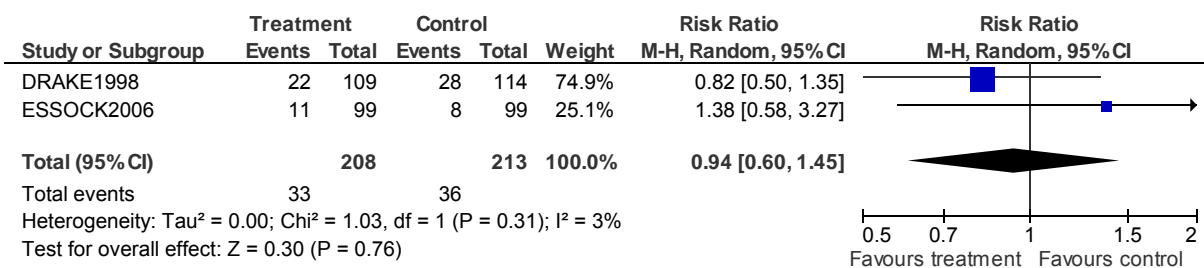
## Service delivery models - Forest plots

### 3.8 Satisfaction: Average general score (QOLI, low=poor)



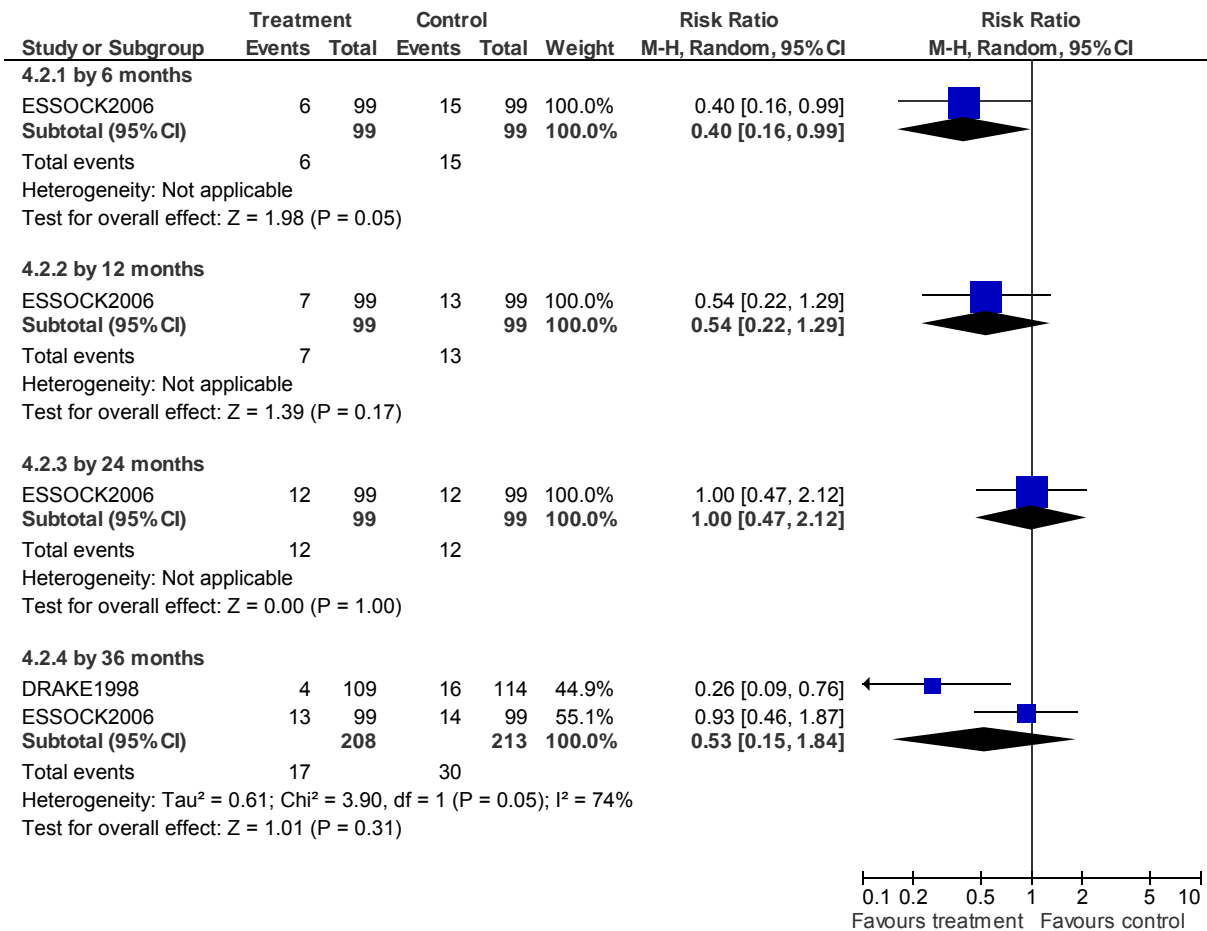
### 4 INTEGRATED ACT versus STANDARD CASE MANAGEMENT (non-critical outcomes)

#### 4.1 Lost to treatment - by 36 months

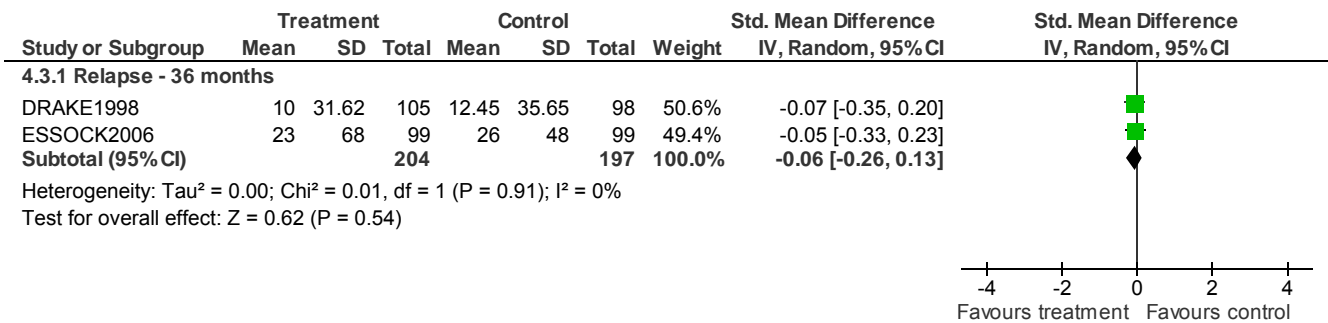


## Service delivery models - Forest plots

### 4.2 Lost to evaluation



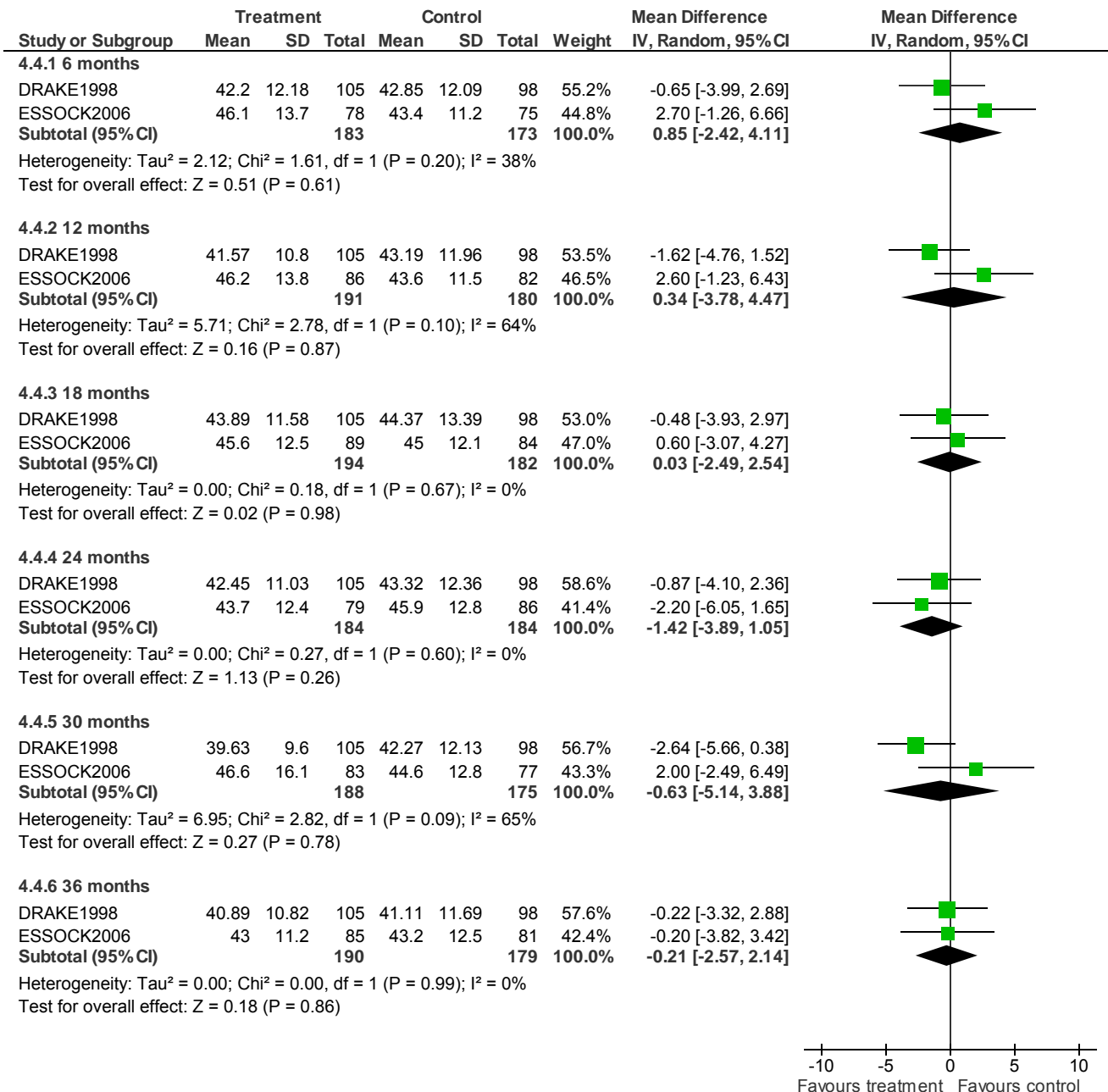
### 4.3 Mental state: 1. Relapse (hospitalisation days and crisis care) (skewed data)



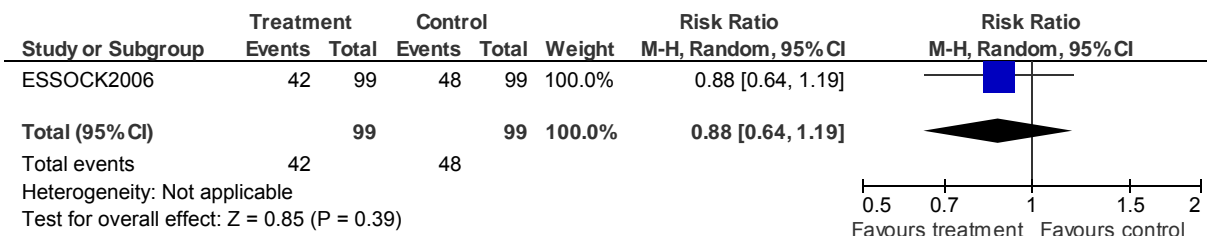


## Service delivery models - Forest plots

### 4.4 Mental state: 2. Average score (BPRS, skewed data)

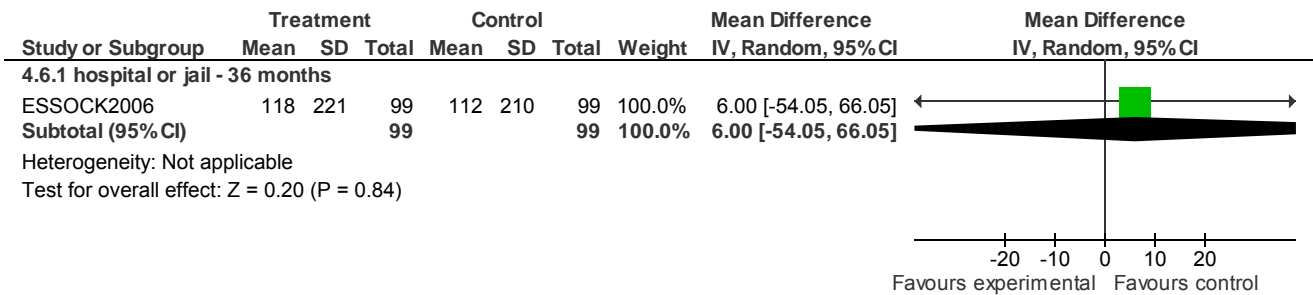


### 4.5 Service use: 2. Number hospitalised - during the 36 month study period



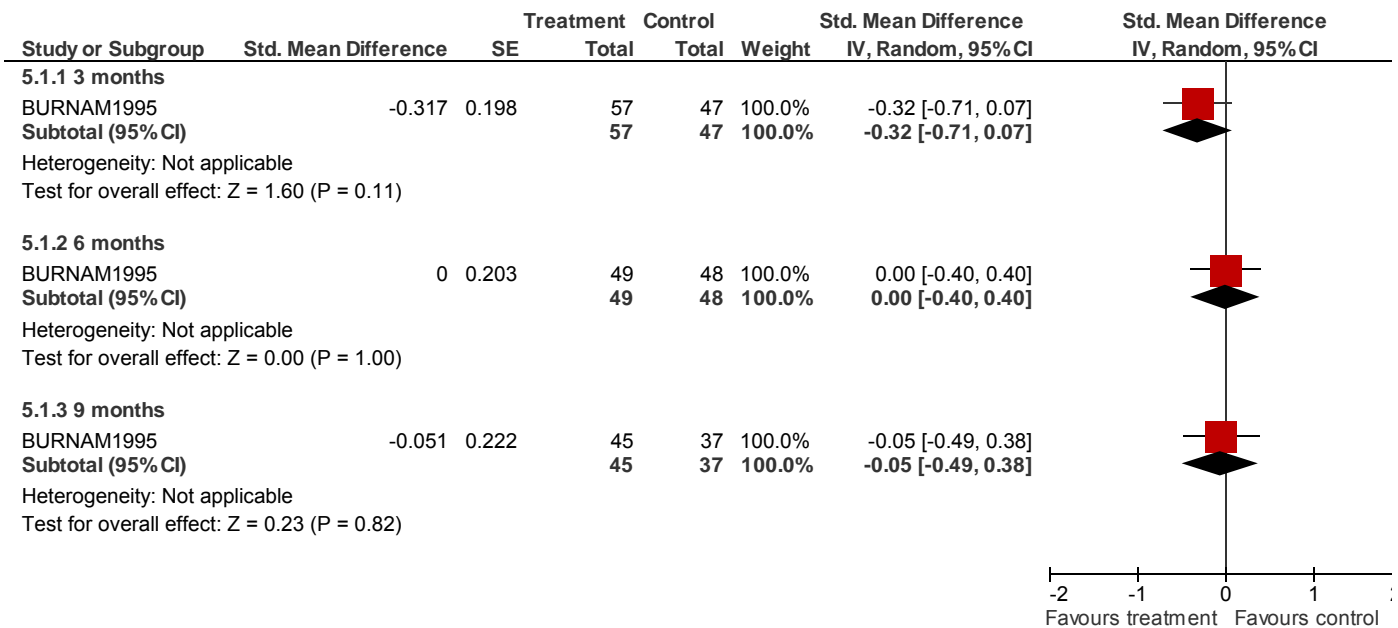
## Service delivery models - Forest plots

### 4.6 Functioning: 2. Forensic measures (skewed data)



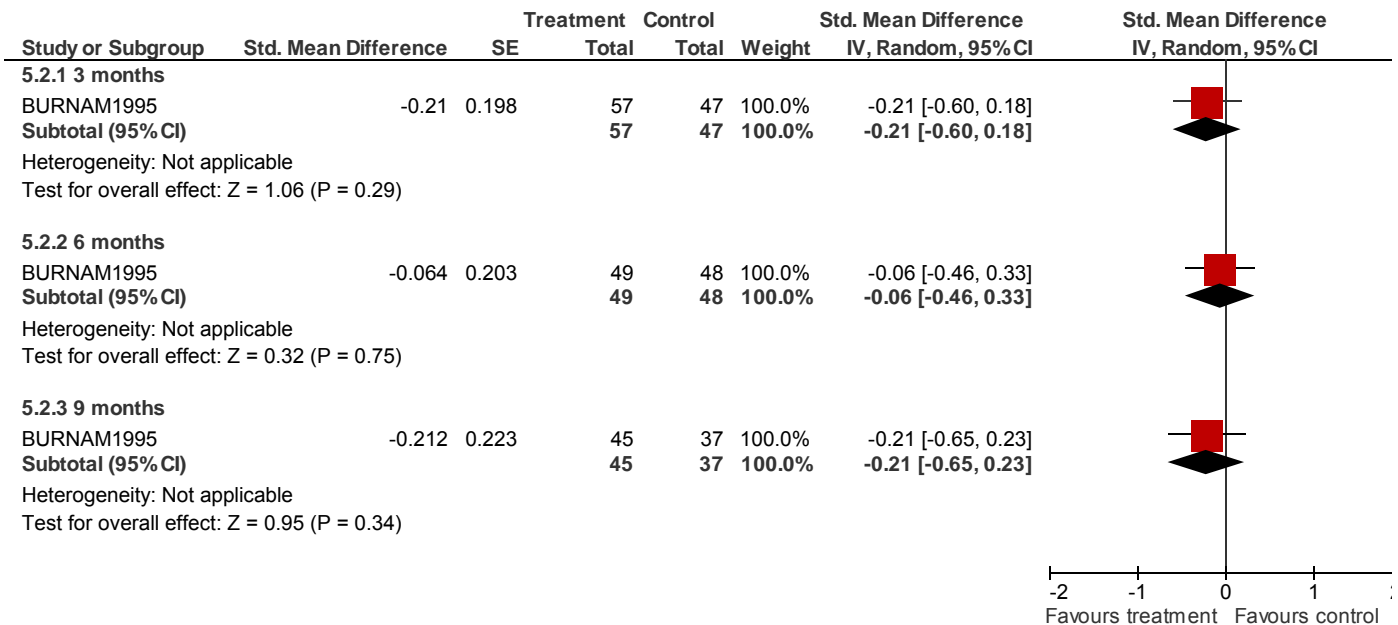
### 5 STAFFED ACCOMMODATION versus STANDARD CARE (critical outcomes)

#### 5.1 Substance use: 1. Days used alcohol (low=poor)

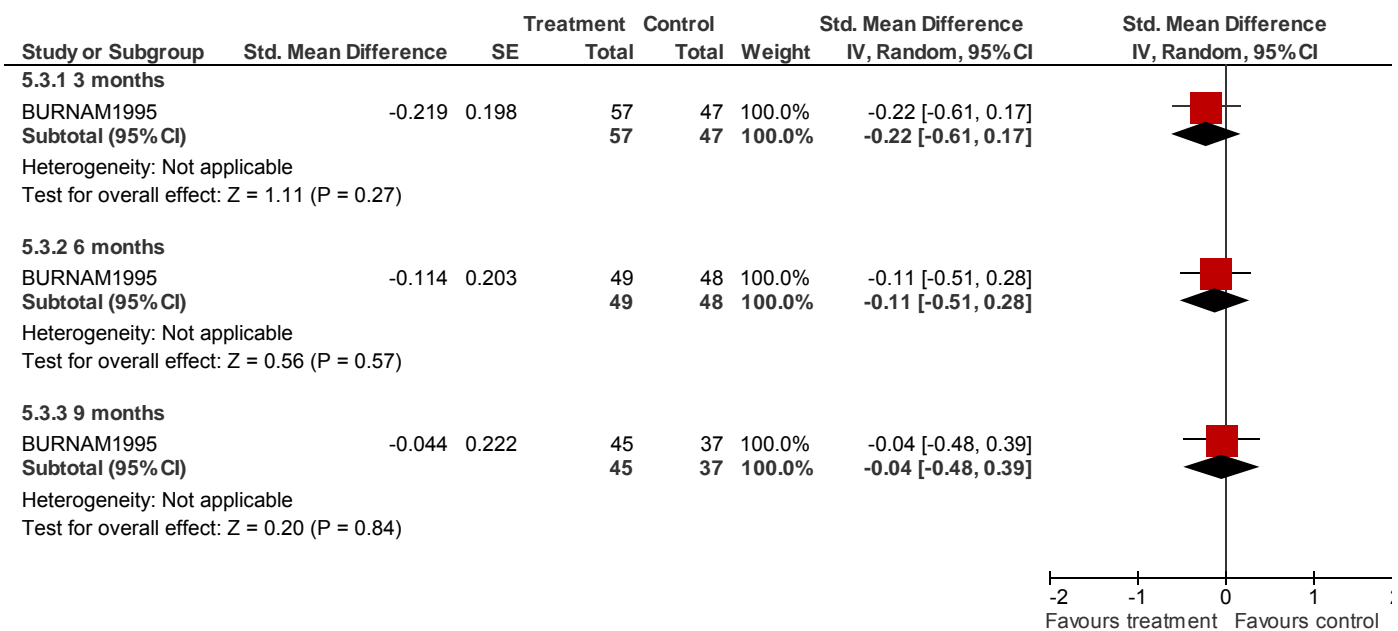


## Service delivery models - Forest plots

### 5.2 Substance use: 2. Level of alcohol use (low=poor)

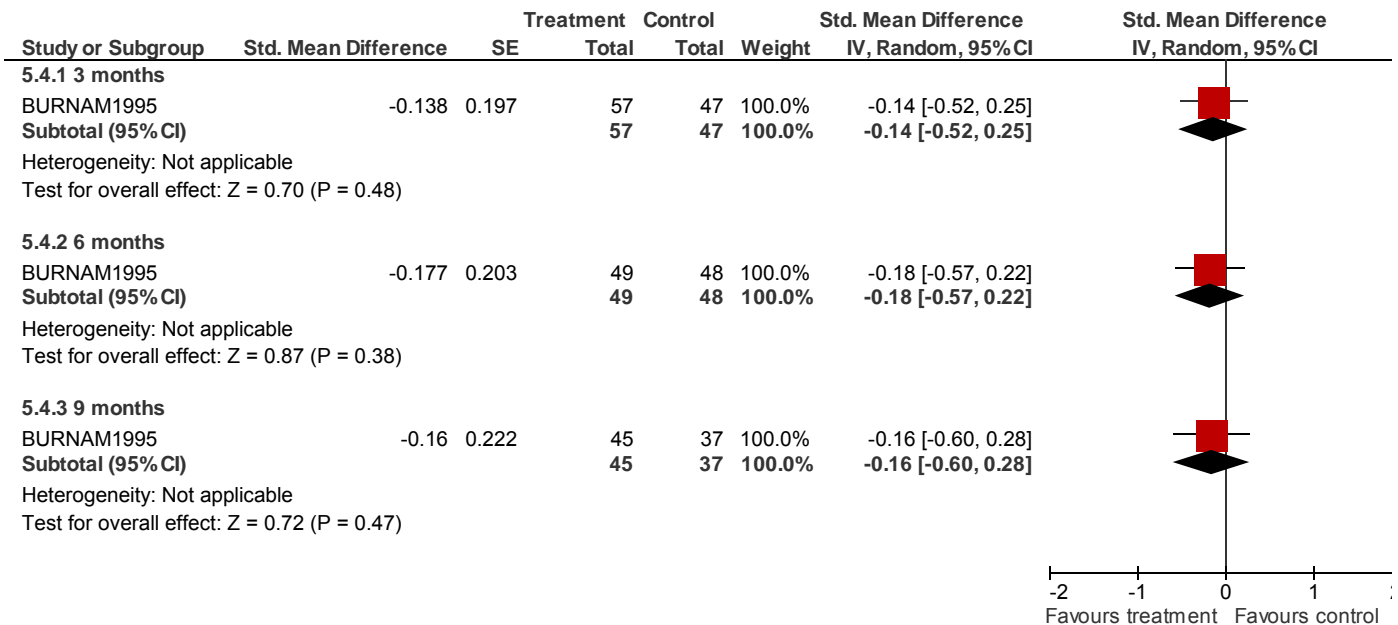


### 5.3 Substance use: 3. Days used drugs (low=poor)

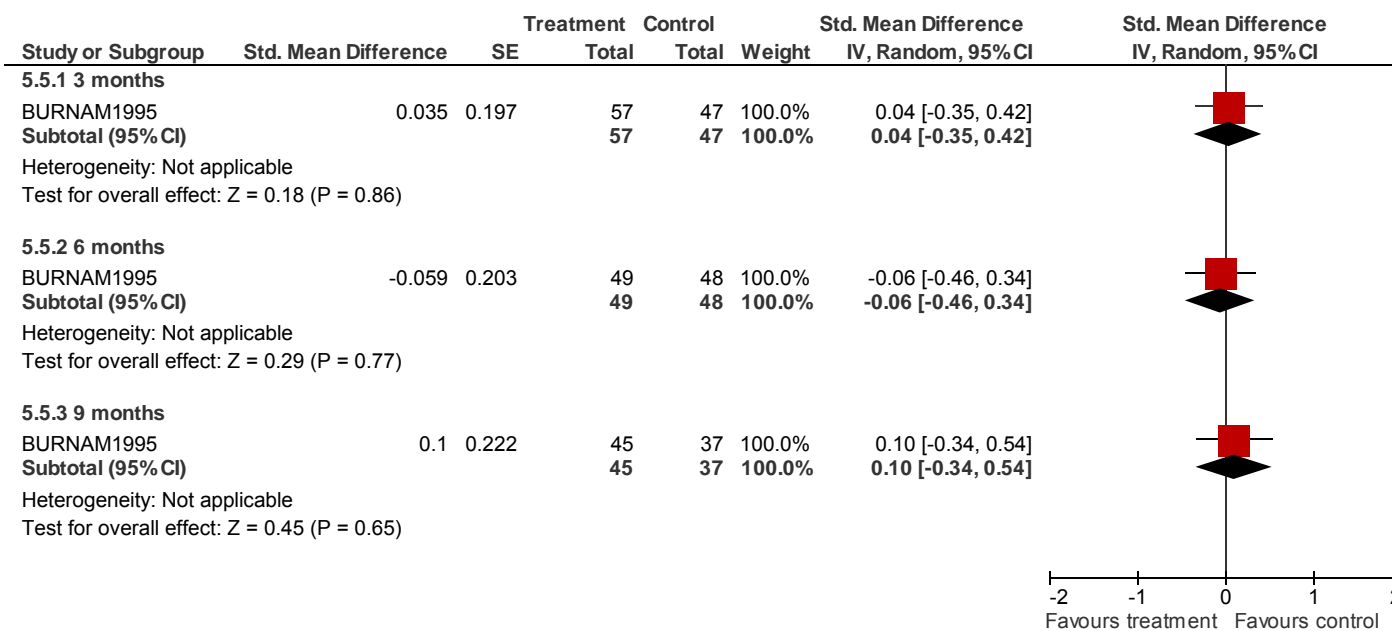


## Service delivery models - Forest plots

### 5.4 Substance use: 4. Severity of drug use (low=poor)

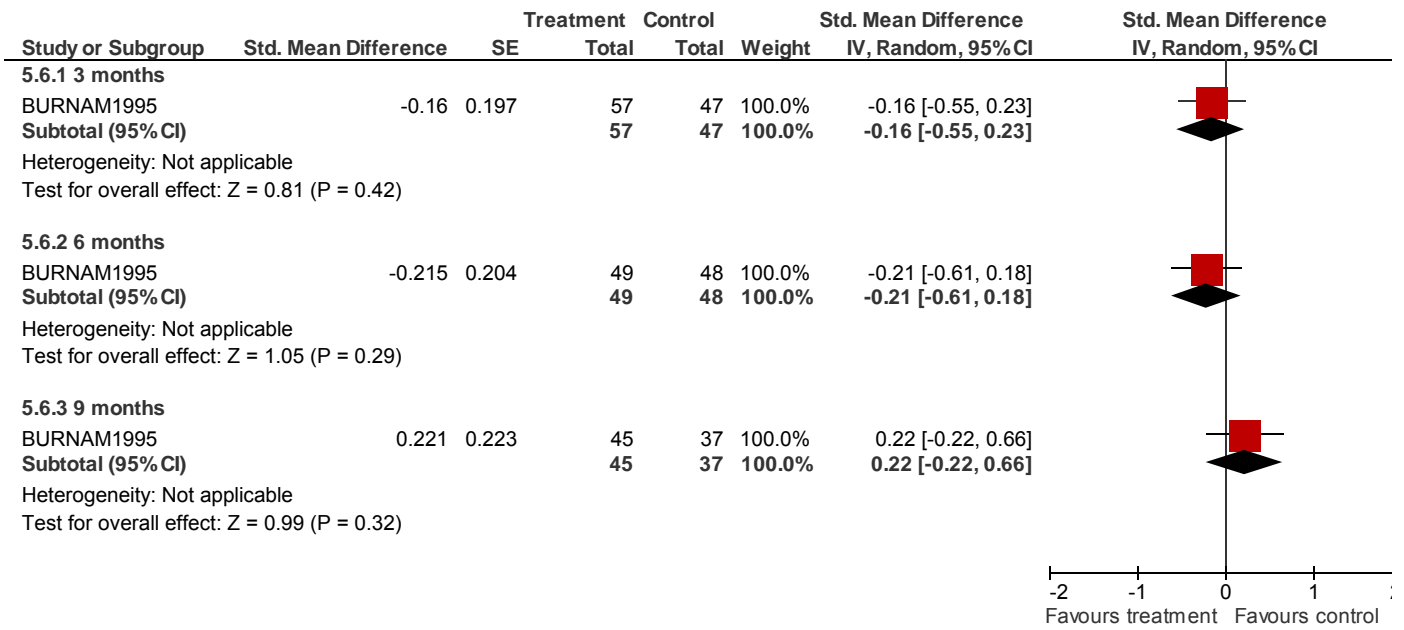


### 5.5 Functioning: 1. %time on streets (low=poor)



## Service delivery models - Forest plots

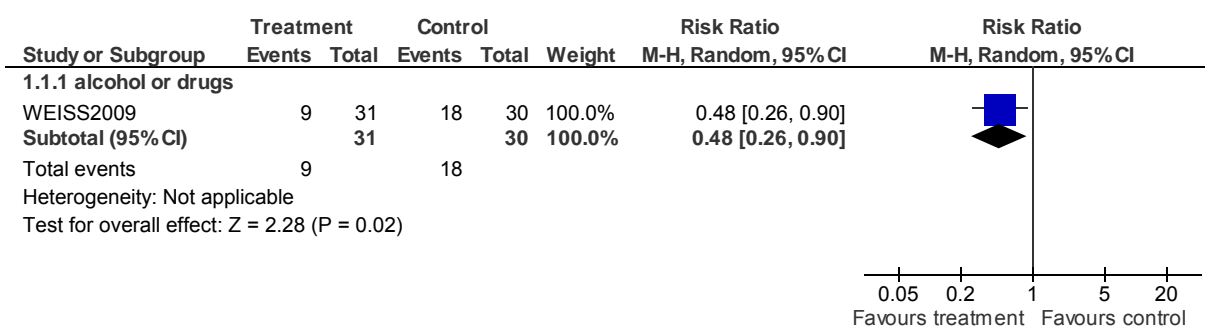
### 5.6 Functioning: 2. %time in independent housing (low=poor)



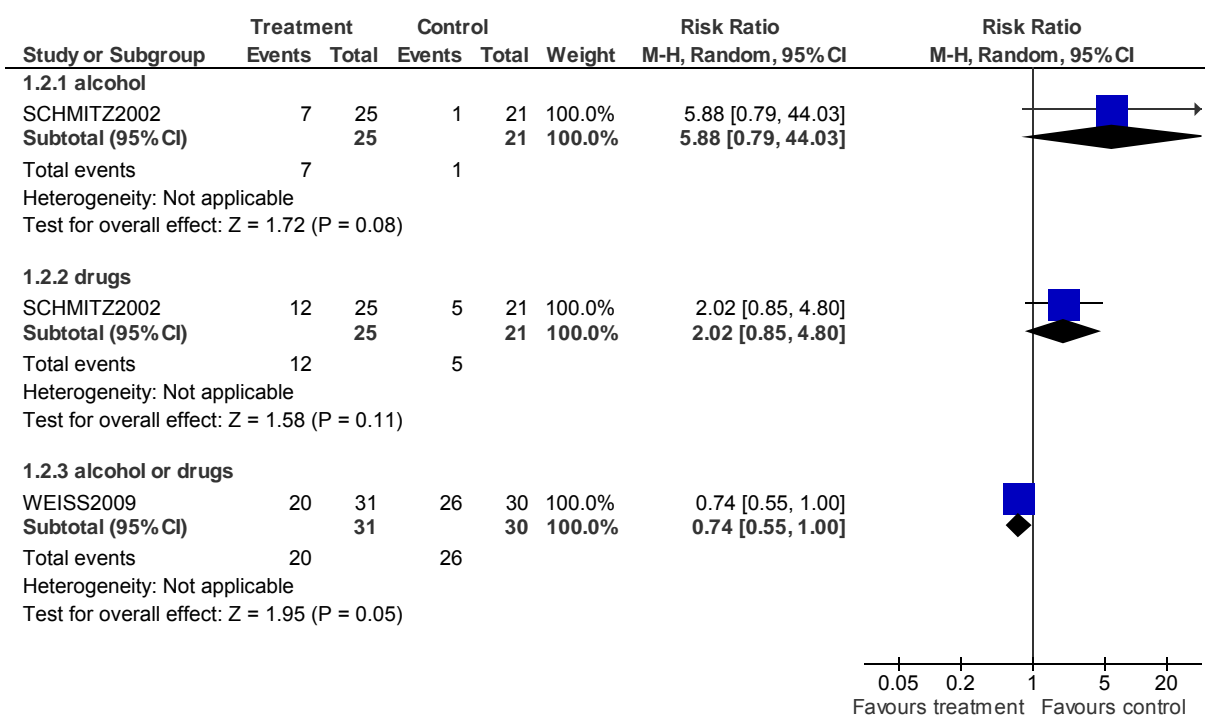
# Psychological/psychosocial interventions - Forest plots

## 1 CBT versus STANDARD CARE (critical outcomes)

### 1.1 Substance use: 1. Using substances - by 1 month

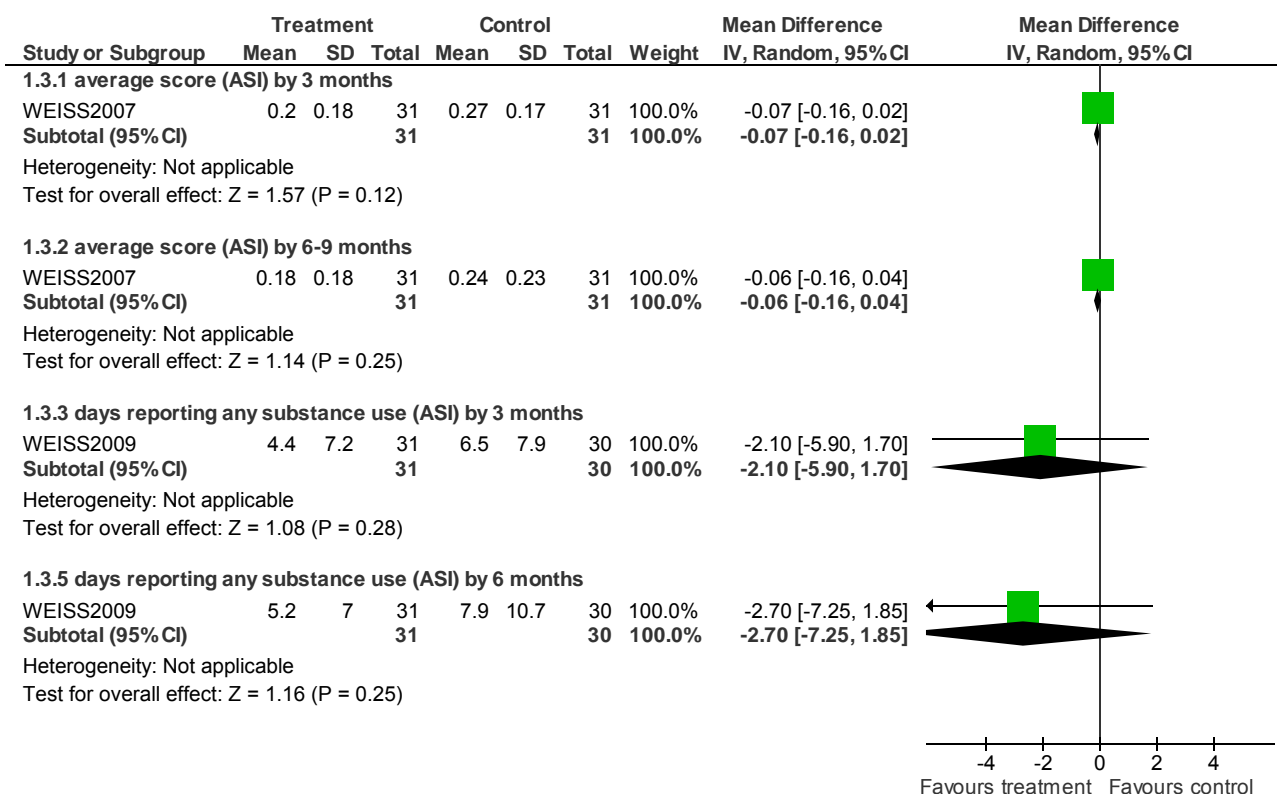


### 1.2 Substance use: 2. Using substances - by 3 months

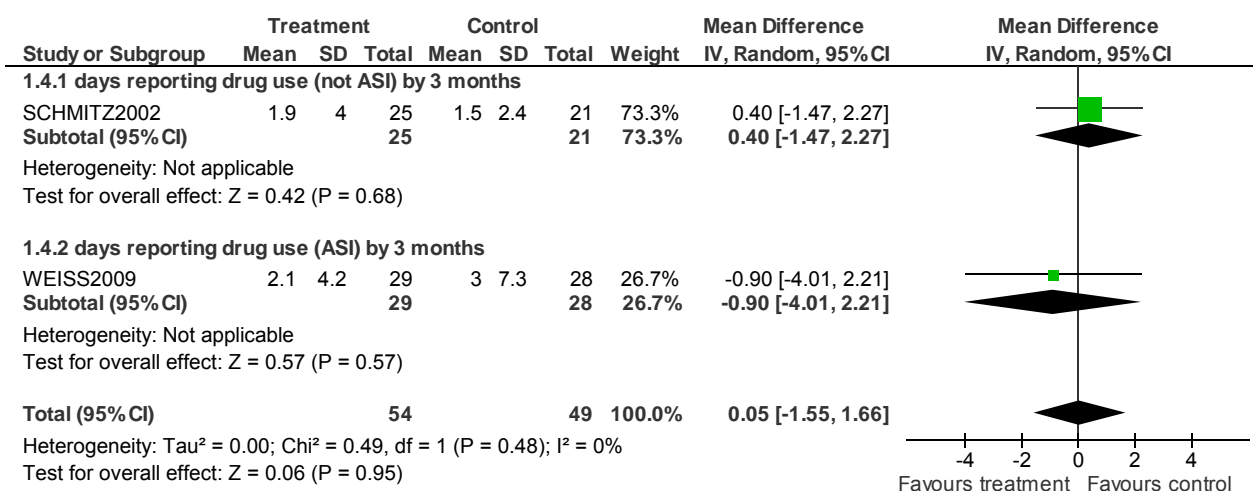


# Psychological/psychosocial interventions - Forest plots

## 1.3 Substance use: 3. Any substance (skewed data)

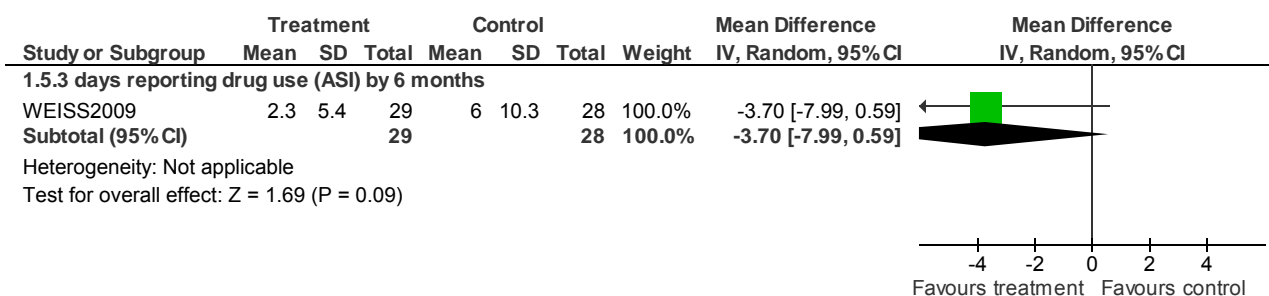


## 1.4 Substance use: 4. Drugs use - by 3 months (skewed data)

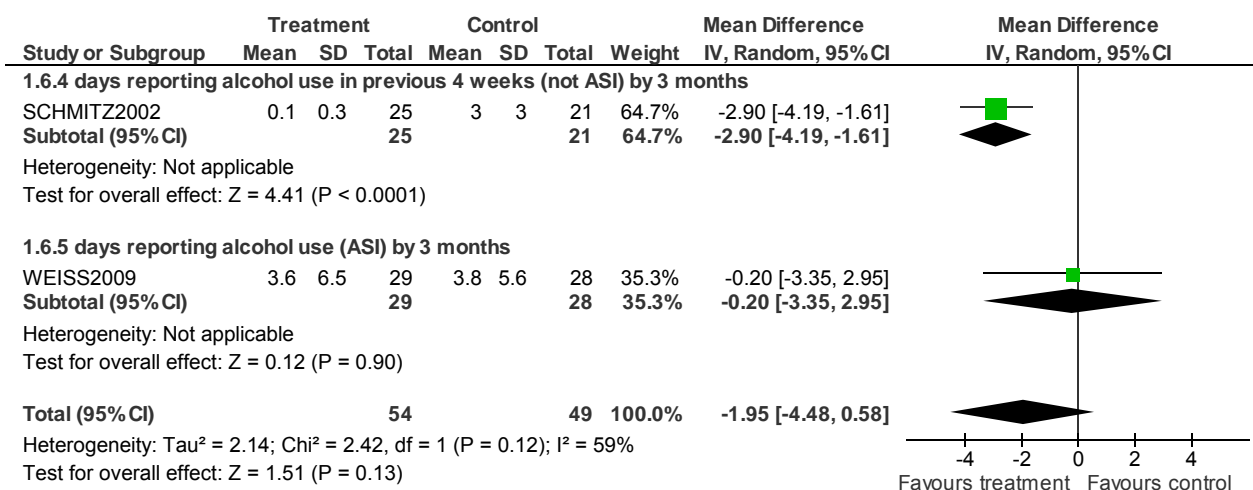


# Psychological/psychosocial interventions - Forest plots

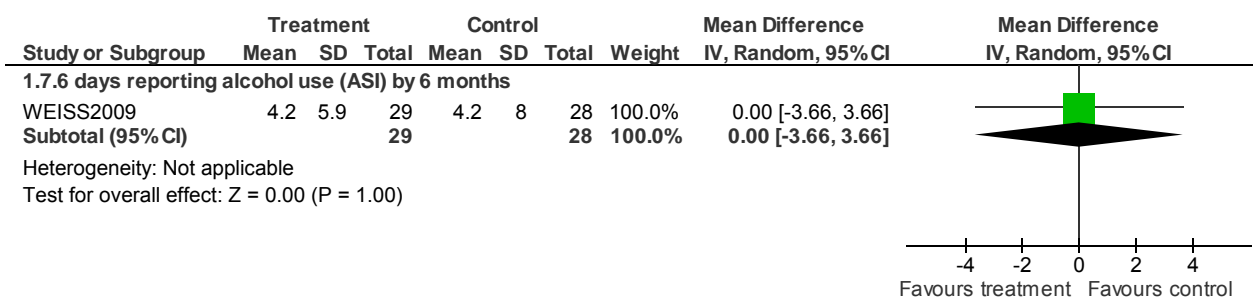
## 1.5 Substance use: 5. Drug use - by 6 months (skewed data)



## 1.6 Substance use: 6. Alcohol use - by 3 months (skewed data)



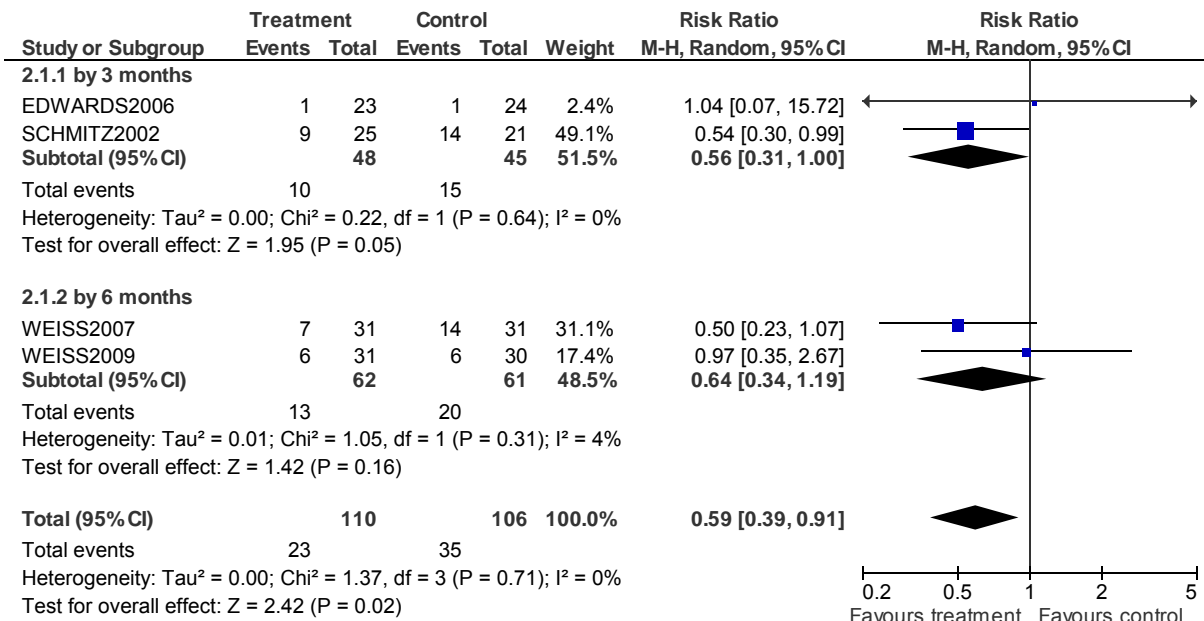
## 1.7 Substance use: 7. Alcohol use - by 6 months (skewed data)



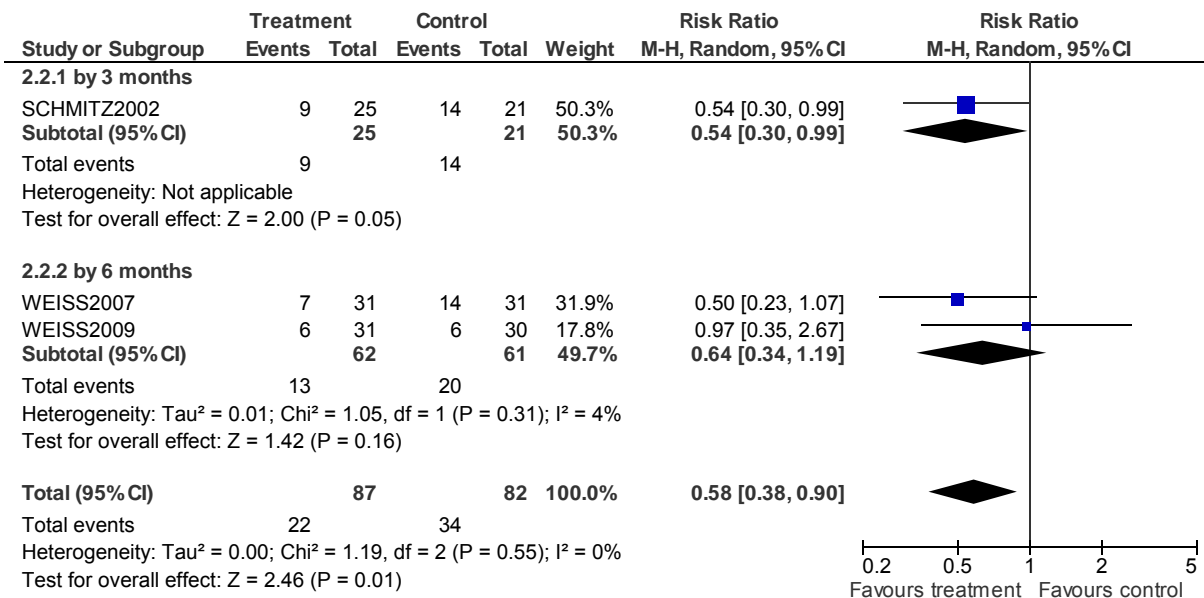


# Psychological/psychosocial interventions - Forest plots

## 2 CBT versus STANDARD CARE (non-critical outcomes) 2.1 Lost to treatment

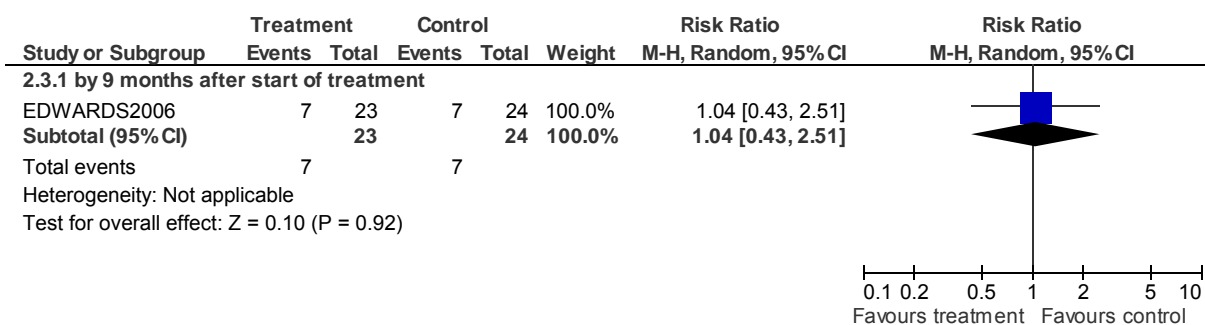


## 2.2 Lost to treatment - sensitivity analysis (bipolar only)

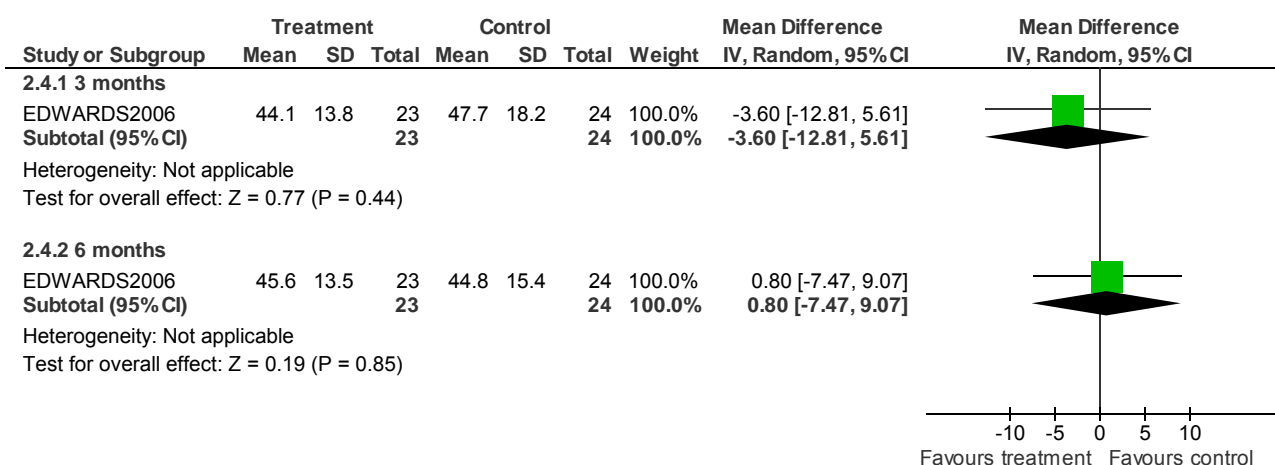


# Psychological/psychosocial interventions - Forest plots

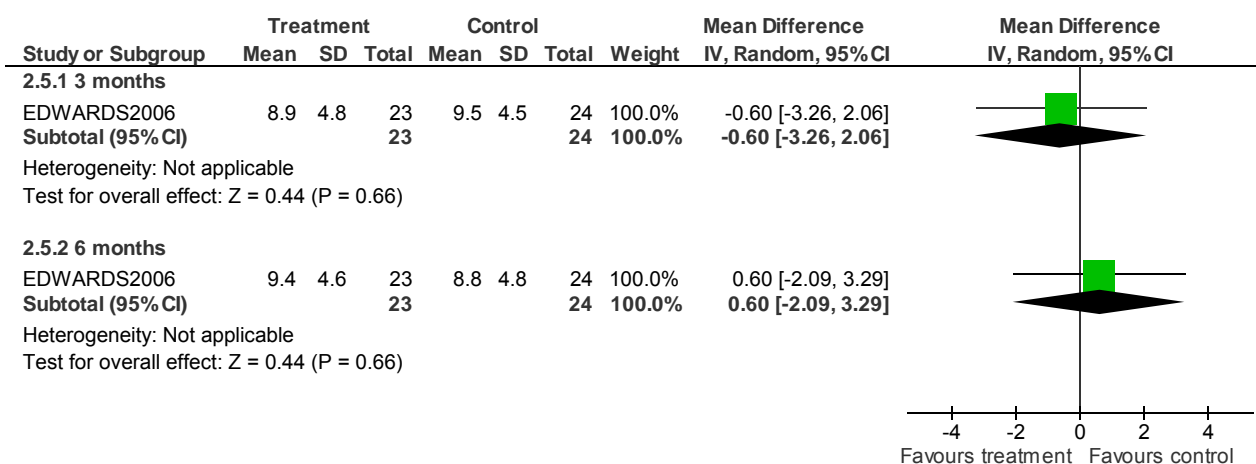
## 2.3 Lost to evaluation



## 2.4 Mental state: 1. Total score (BPRS, high = poor)

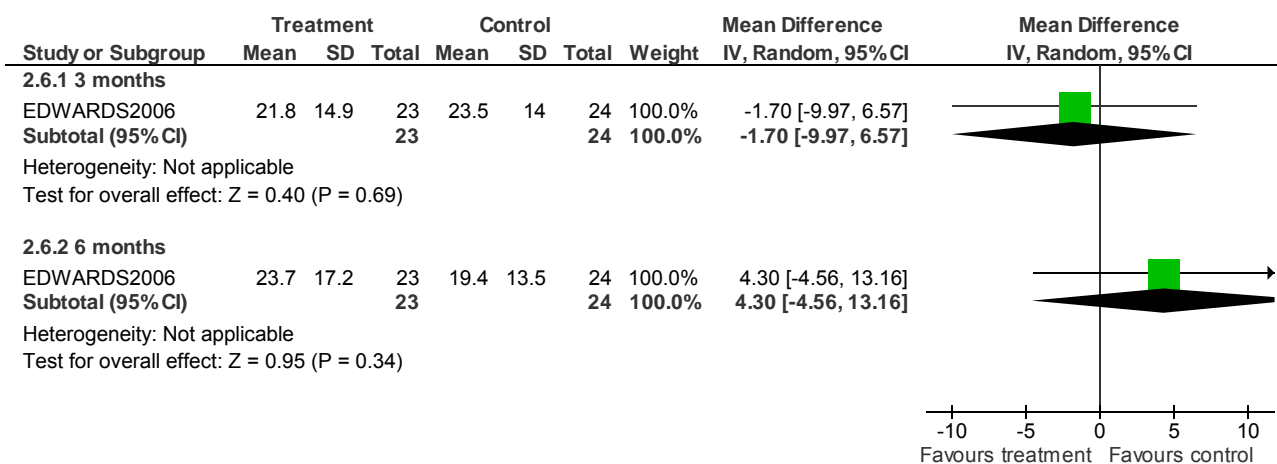


## 2.5 Mental state: 2. Postive symptoms (BPRS, high = poor) (skewed data)

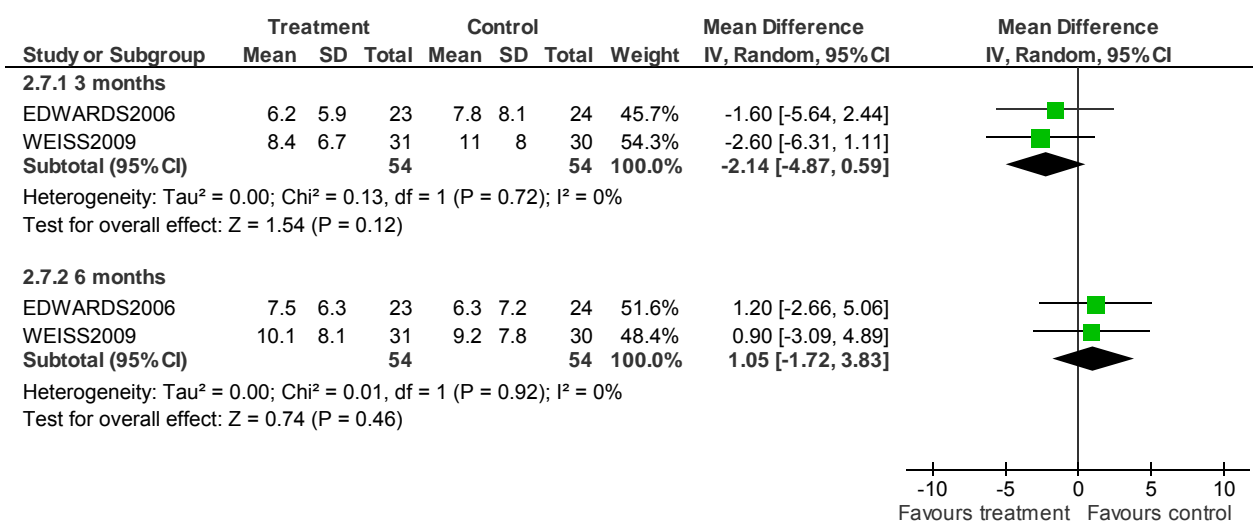


## Psychological/psychosocial interventions - Forest plots

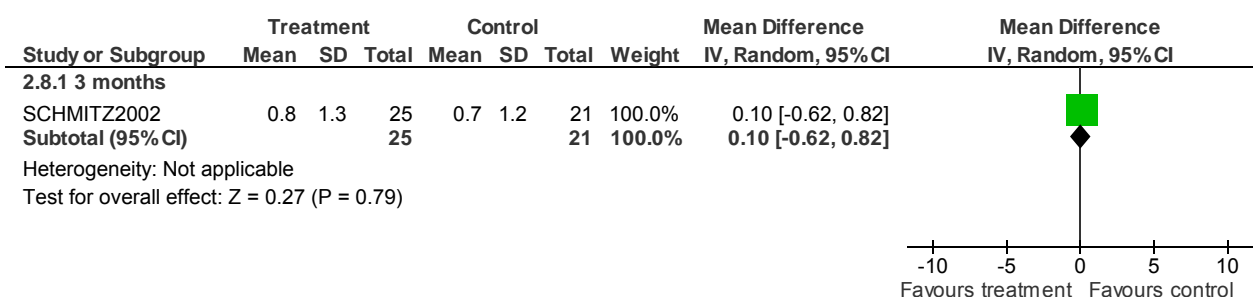
### 2.6 Mental state: 3. Negative symptoms (SANS, high = poor) (skewed data)



### 2.7 Mental state: 4. Depressive symptoms (BDI-SF or HDRS, high = poor) (skewed data)

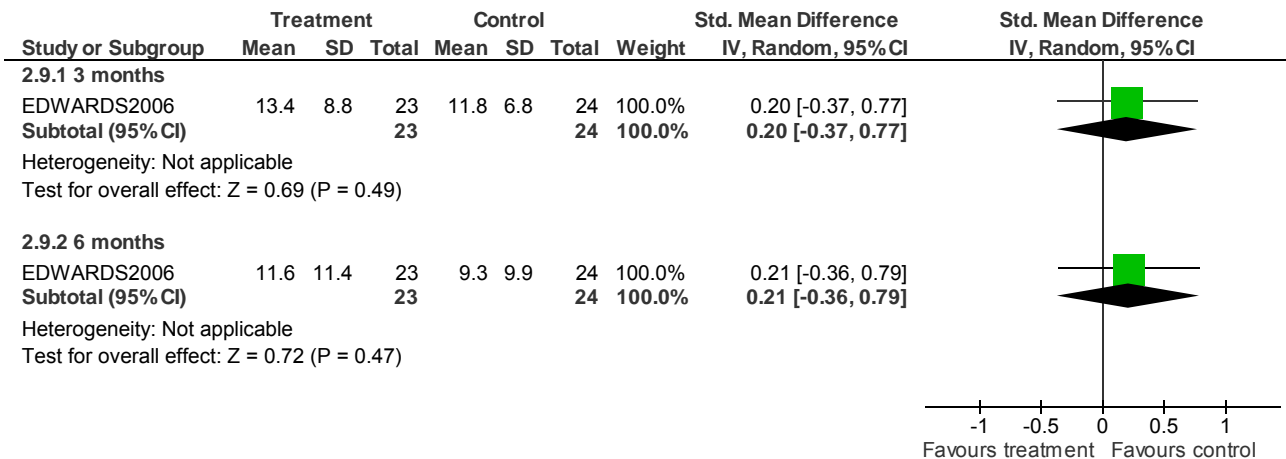


### 2.8 Mental state: 5. Depressive symptoms (Days reporting symptoms, high = poor) (skewed data)

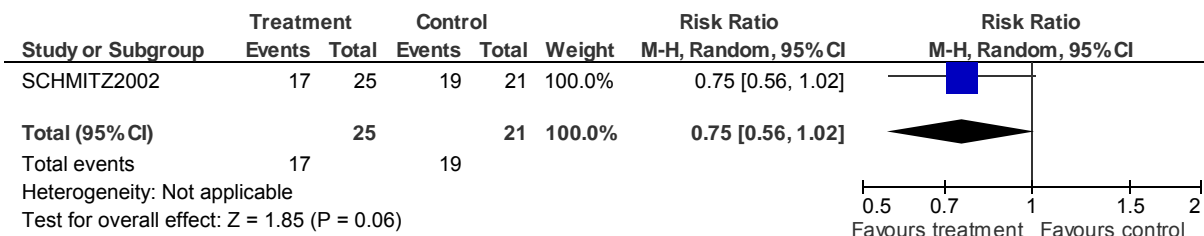


# Psychological/psychosocial interventions - Forest plots

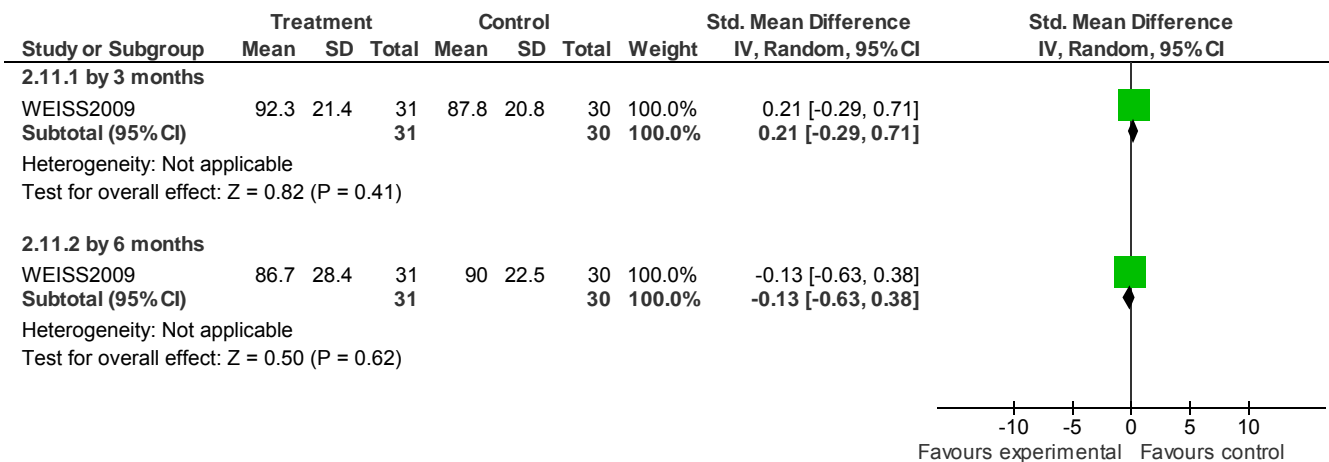
## 2.9 Service use: 1. Outpatient attendance & medication (SURS, skewed data)



## 2.10 Adherence: 1. Not adherent with medication - by 3 months

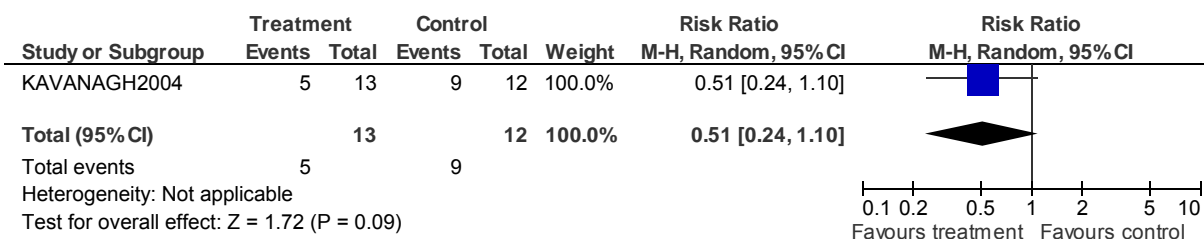


## 2.11 Adherence: 2. Medication adherence rate



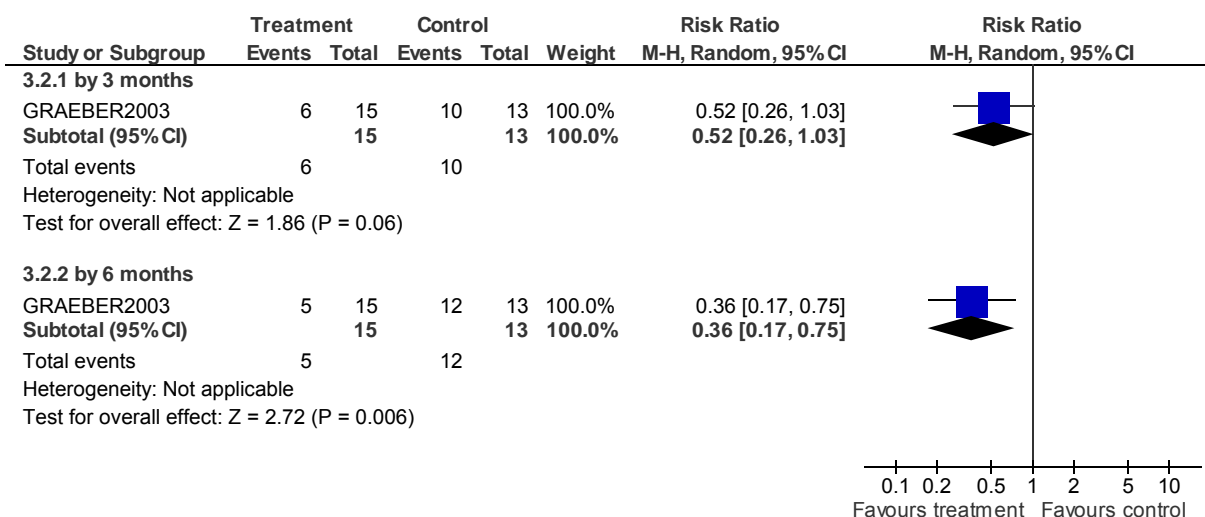
## 3 MOTIVATIONAL INTERVIEWING versus STANDARD CARE (critical outcomes)

### 3.1 Substance use: 1. Not abstinent or not improved on all substances - by 12 months

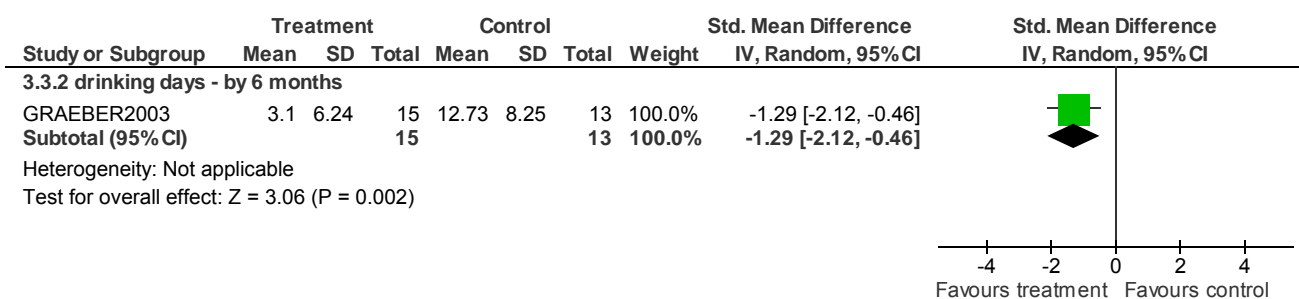


## Psychological/psychosocial interventions - Forest plots

### 3.2 Substance use: 2. Not abstaining from alcohol

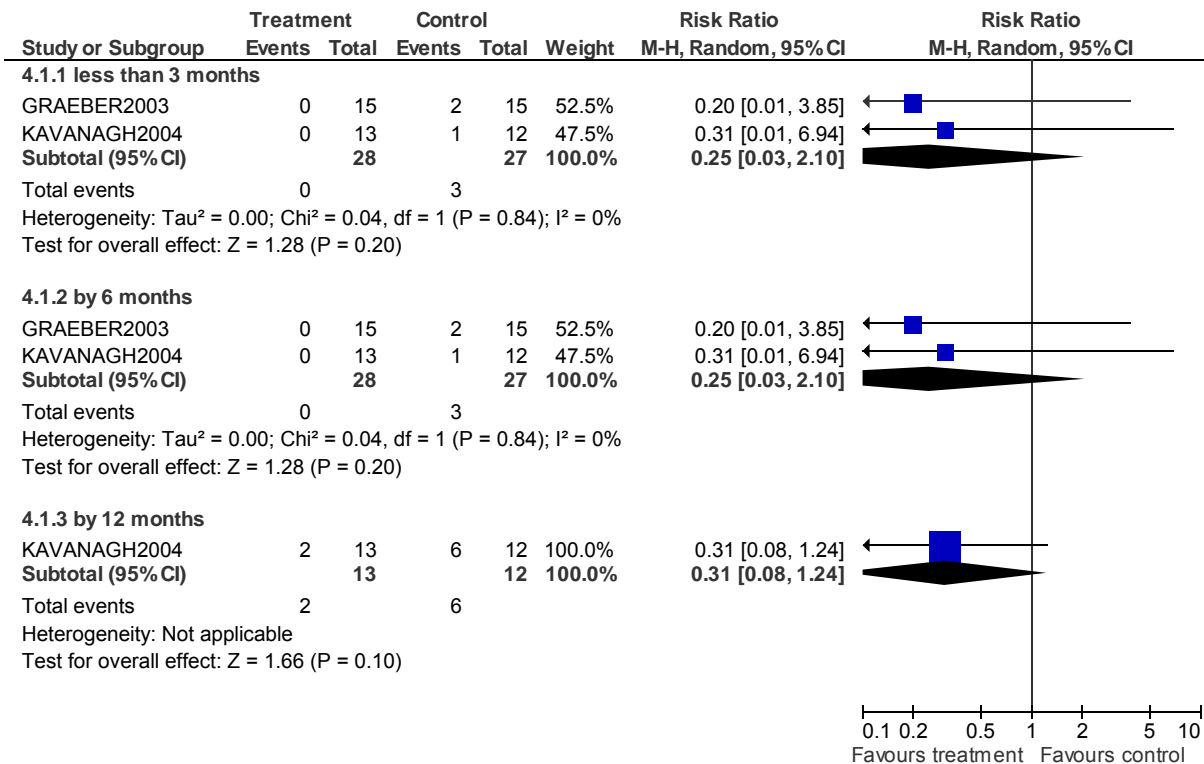


### 3.3 Substance use: 3. Other measures of alcohol use (skewed data)



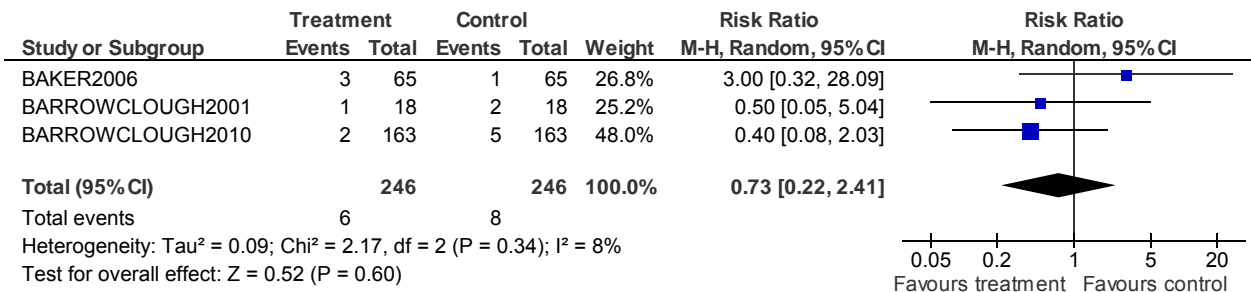
# Psychological/psychosocial interventions - Forest plots

## 4 MOTIVATIONAL INTERVIEWING versus STANDARD CARE (non-critical outcomes) 4.1 Lost to evaluation



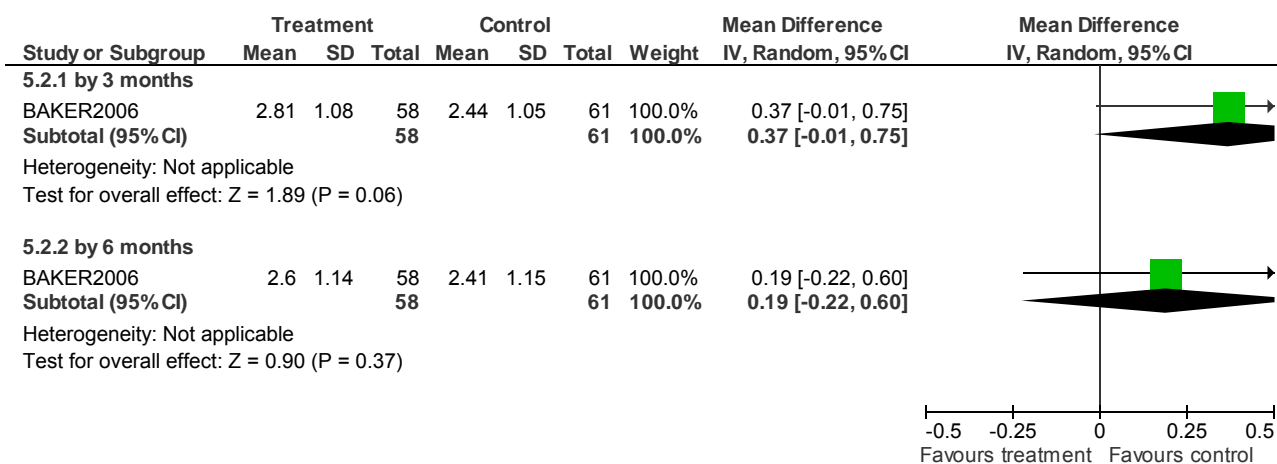
## 5 CBT + MOTIVATIONAL INTERVIEWING versus STANDARD CARE (critical outcomes)

### 5.1 Death - by about 1 year

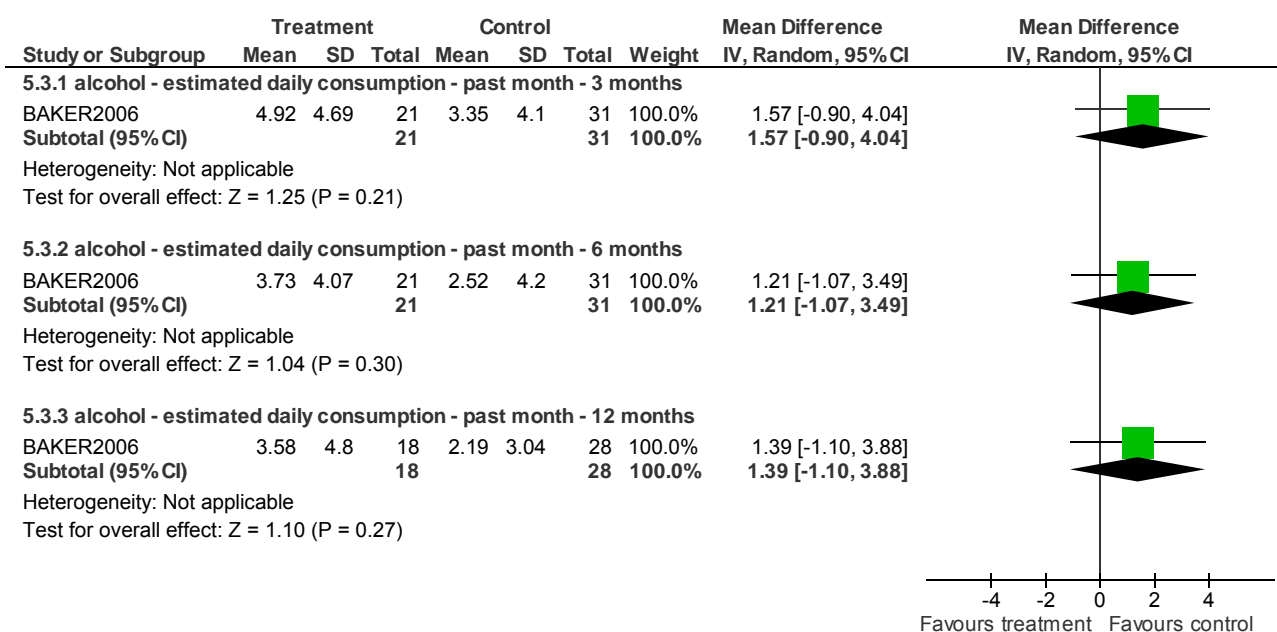


## Psychological/psychosocial interventions - Forest plots

### 5.2 Substance use: 1. Average number of different drugs used during the past month (OTI, high = poor)

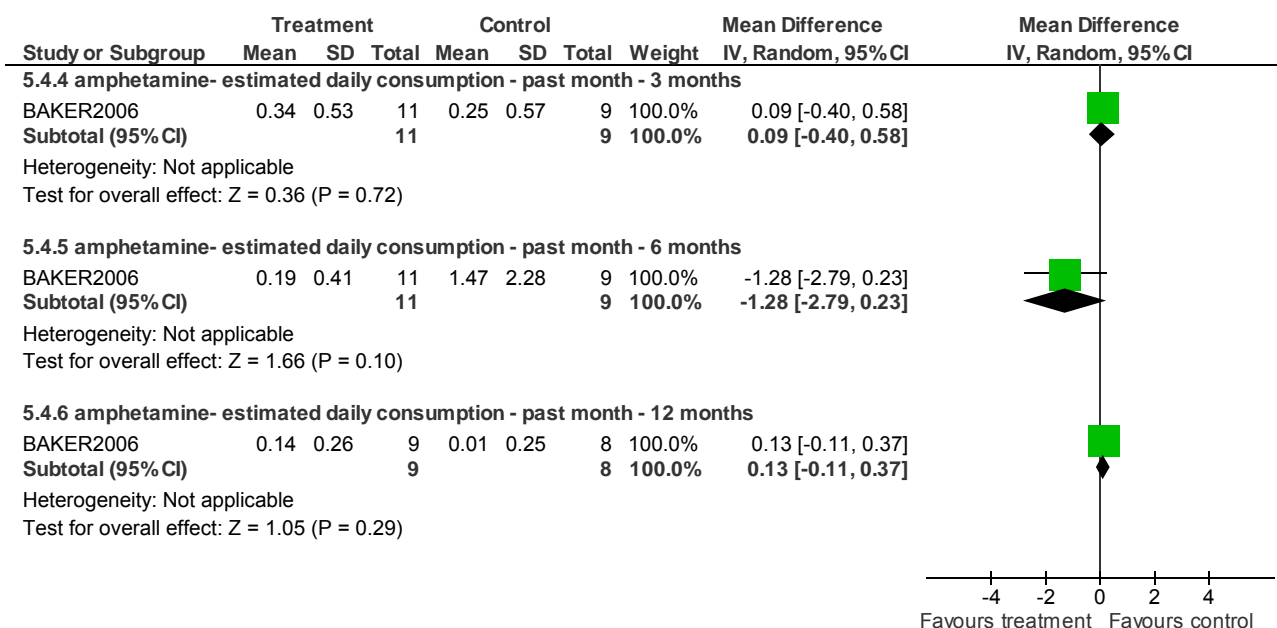


### 5.3 Substance use: 2. Average score - alcohol (skewed data)

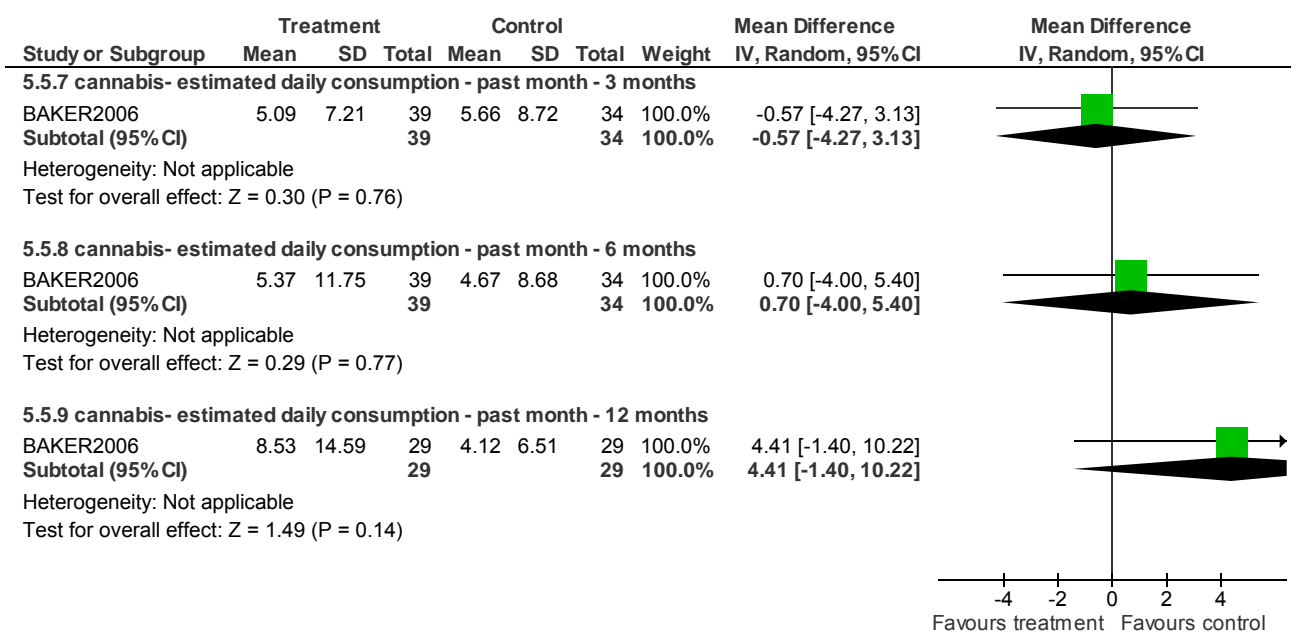


## Psychological/psychosocial interventions - Forest plots

### 5.4 Substance use: 3. Average score - amphetamine (skewed data)



### 5.5 Substance use: 4. Average score - cannabis (skewed data)



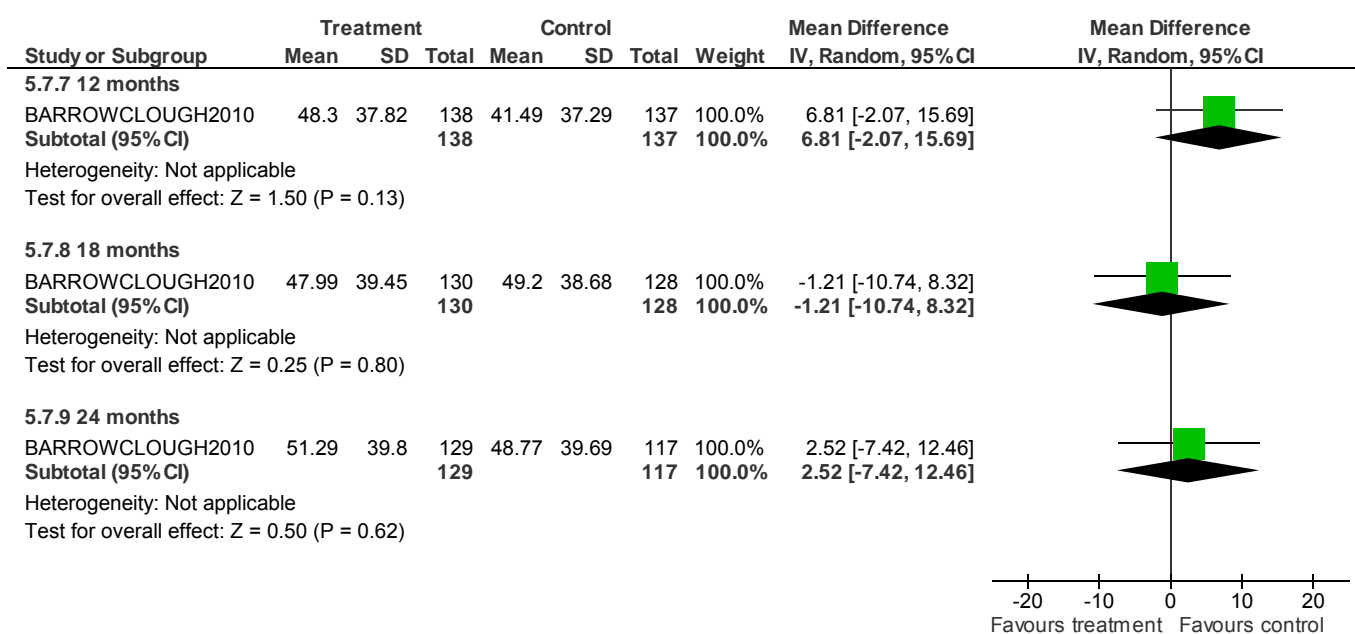


## Psychological/psychosocial interventions - Forest plots

### 5.6 Substance use: 6. Average change in % days abstinent during & after treatment

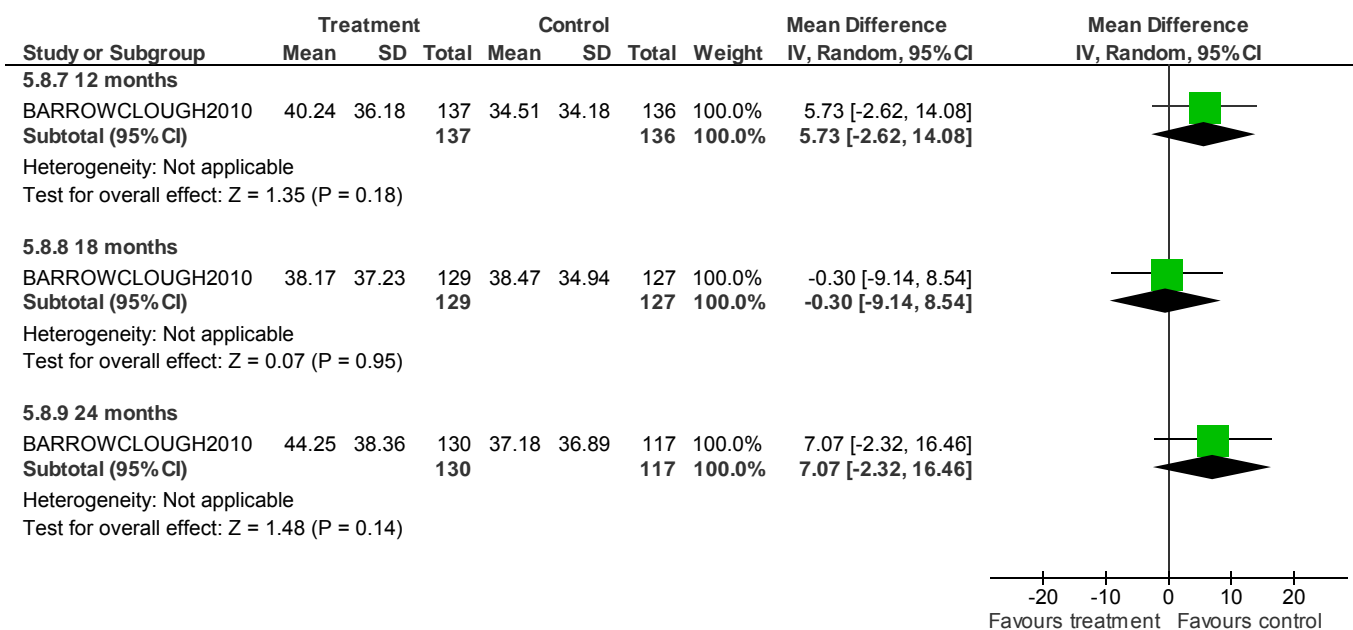
Study ID	Treatment Group	Median	range	N	Notes
BARROWCLOUGH 2001	CBT + MI	19.99	-25.6 to 83.4	17	U=86.5 p<0.03 Non-parametric analysis.  Data summed over 4 time periods (to 12 months) and subtracted from baseline.
	TAU	-6.52	-67.9-53.2	15	

### 5.7 Substance use: 7. TLFB: %days abstinent main substance (skewed data)

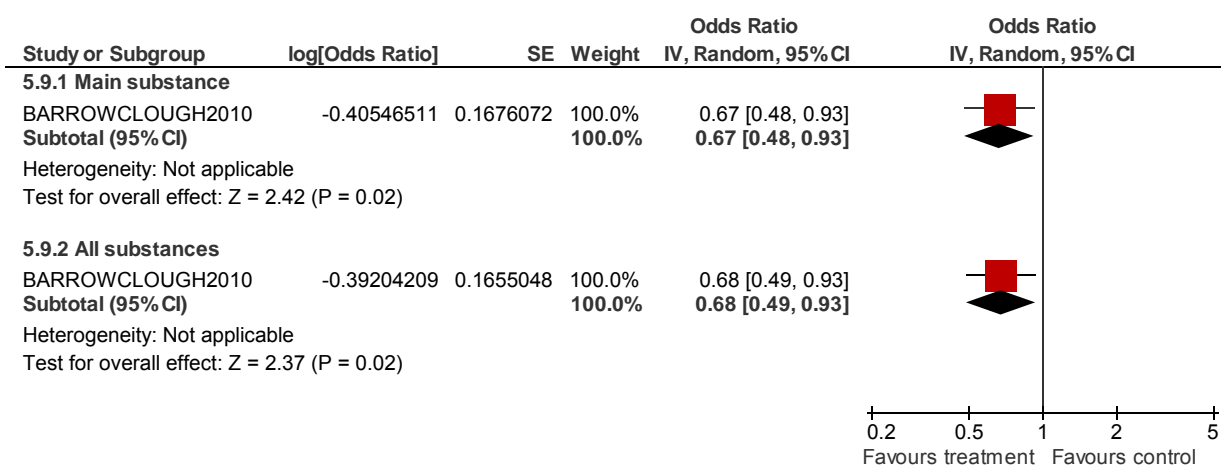


## Psychological/psychosocial interventions - Forest plots

### 5.8 Substance use: 8. TLFB: %days abstinent all substance (skewed data)

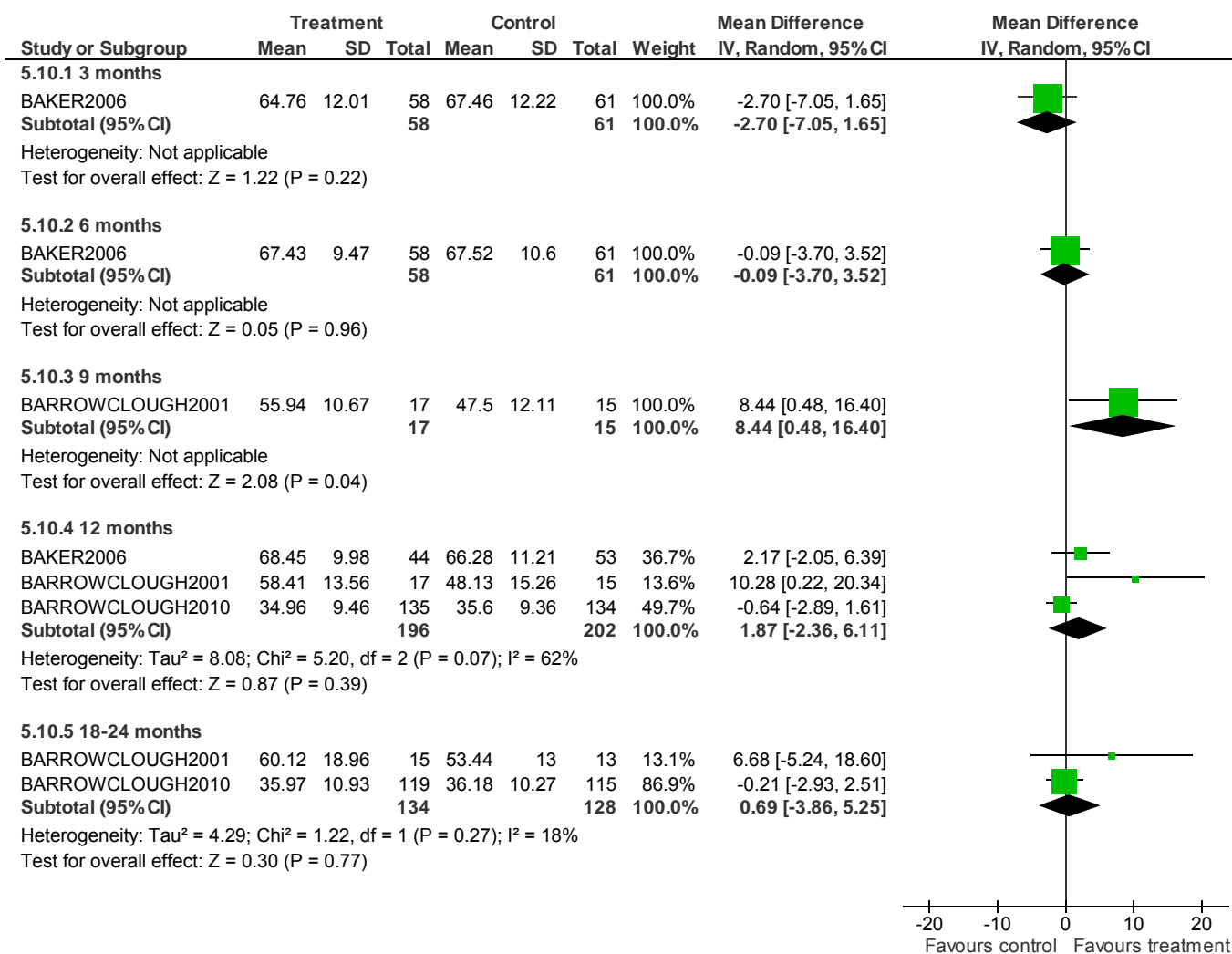


### 5.9 Substance use: 9. Substance use per substance-using day

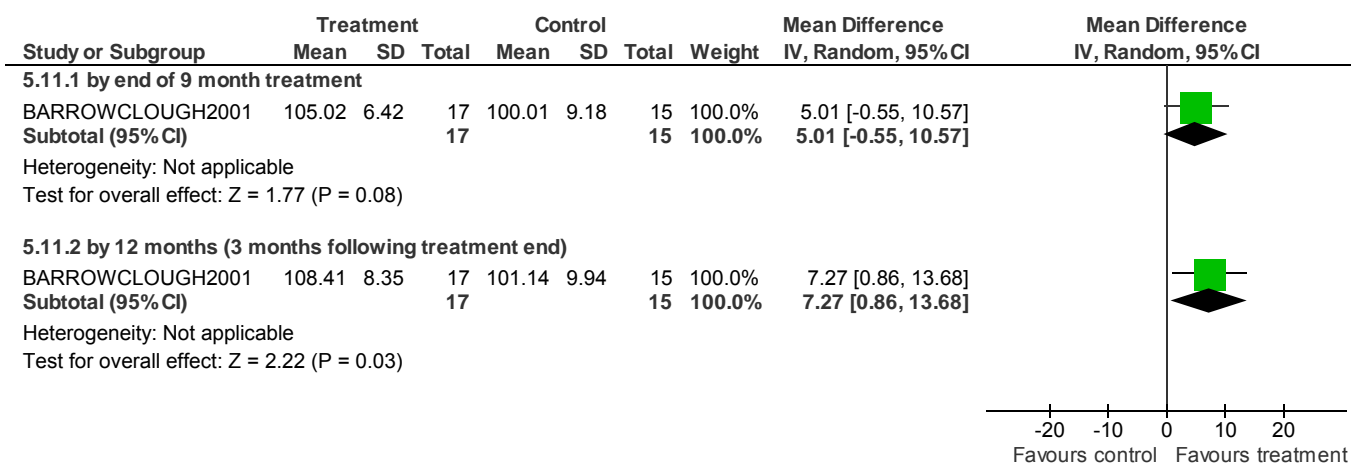


# Psychological/psychosocial interventions - Forest plots

## 5.10 Functioning: 1. Average global functioning score (GAF, low = poor)

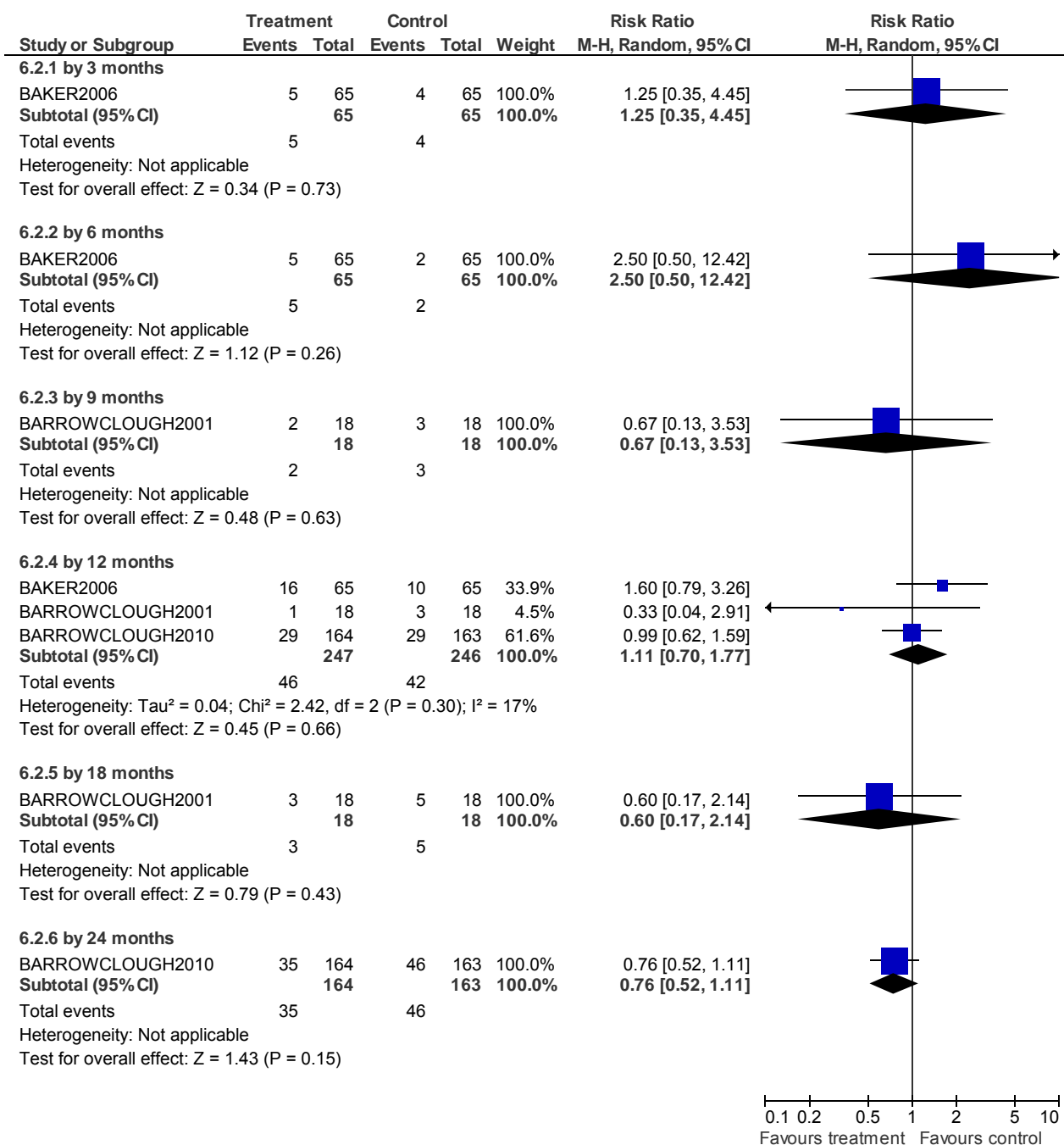


## 5.11 Functioning: 2. Average social functioning score (SFS, low = poor)



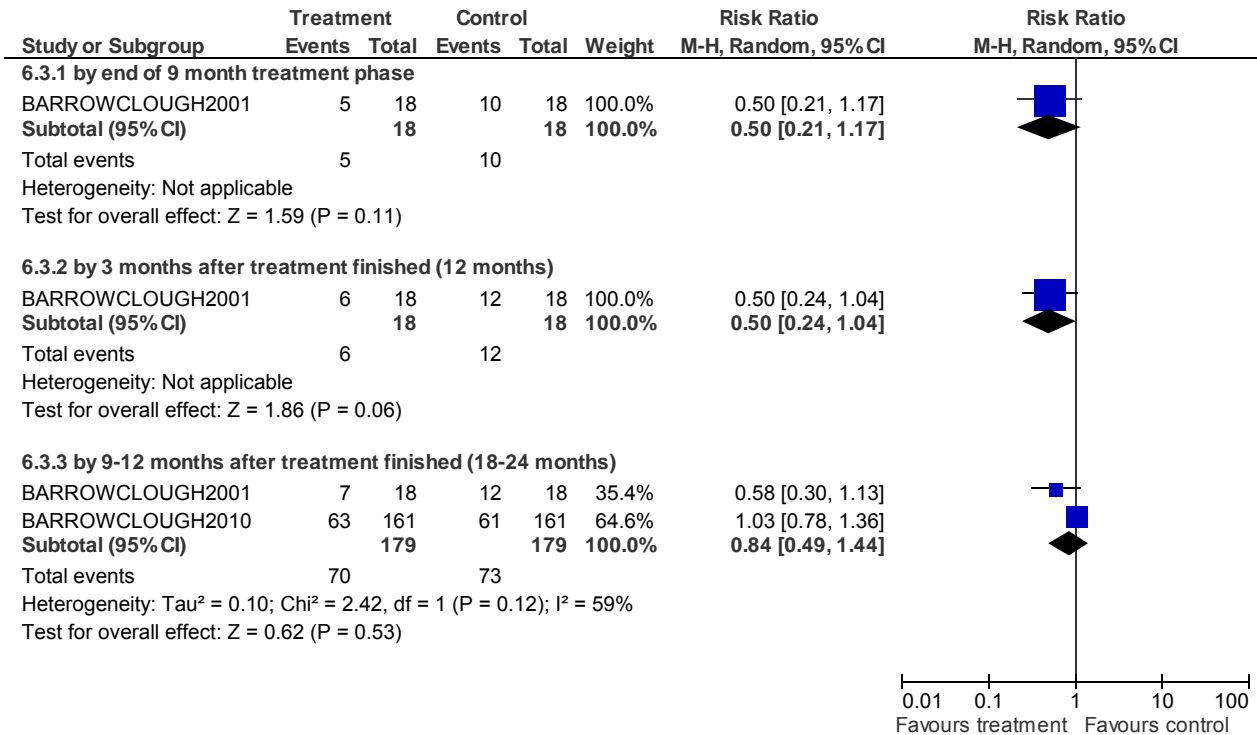
# Psychological/psychosocial interventions - Forest plots

## 6 CBT + MOTIVATIONAL INTERVIEWING versus STANDARD CARE (non-critical outcomes) 6.1 Lost to evaluation

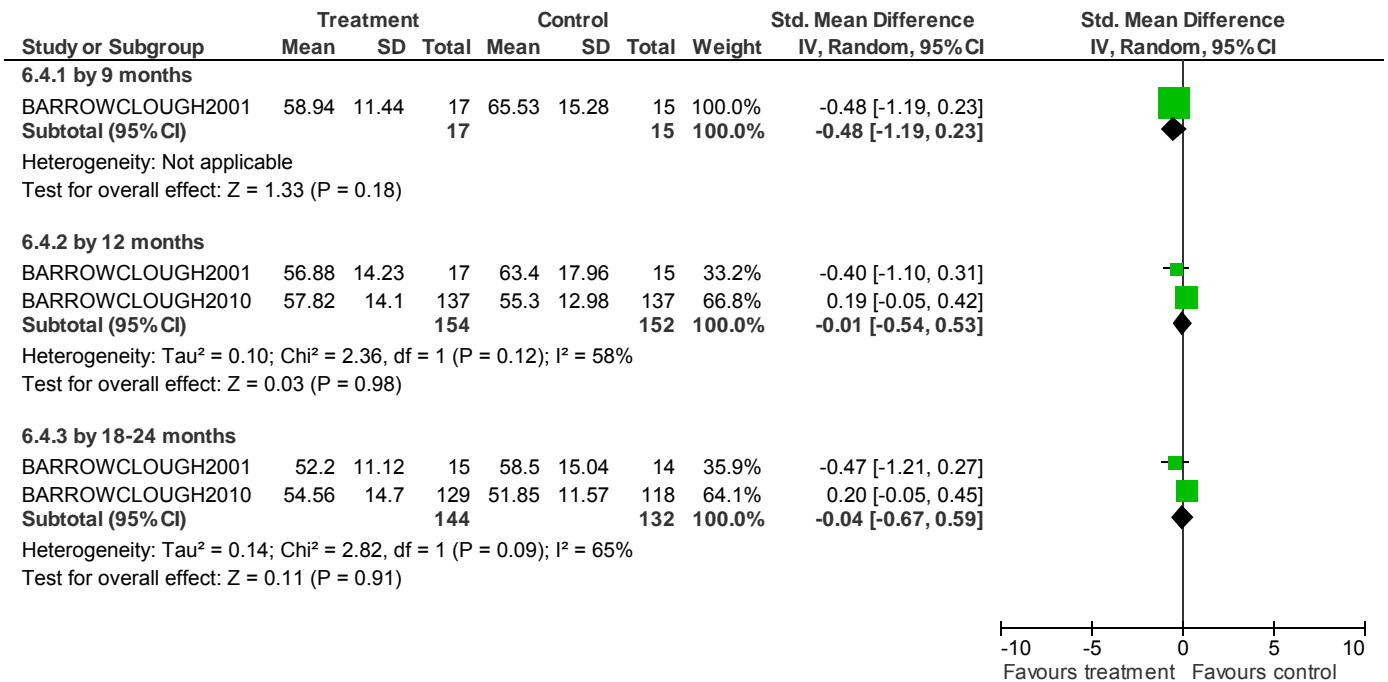


# Psychological/psychosocial interventions - Forest plots

## 6.3 Mental state: 1. Relapse

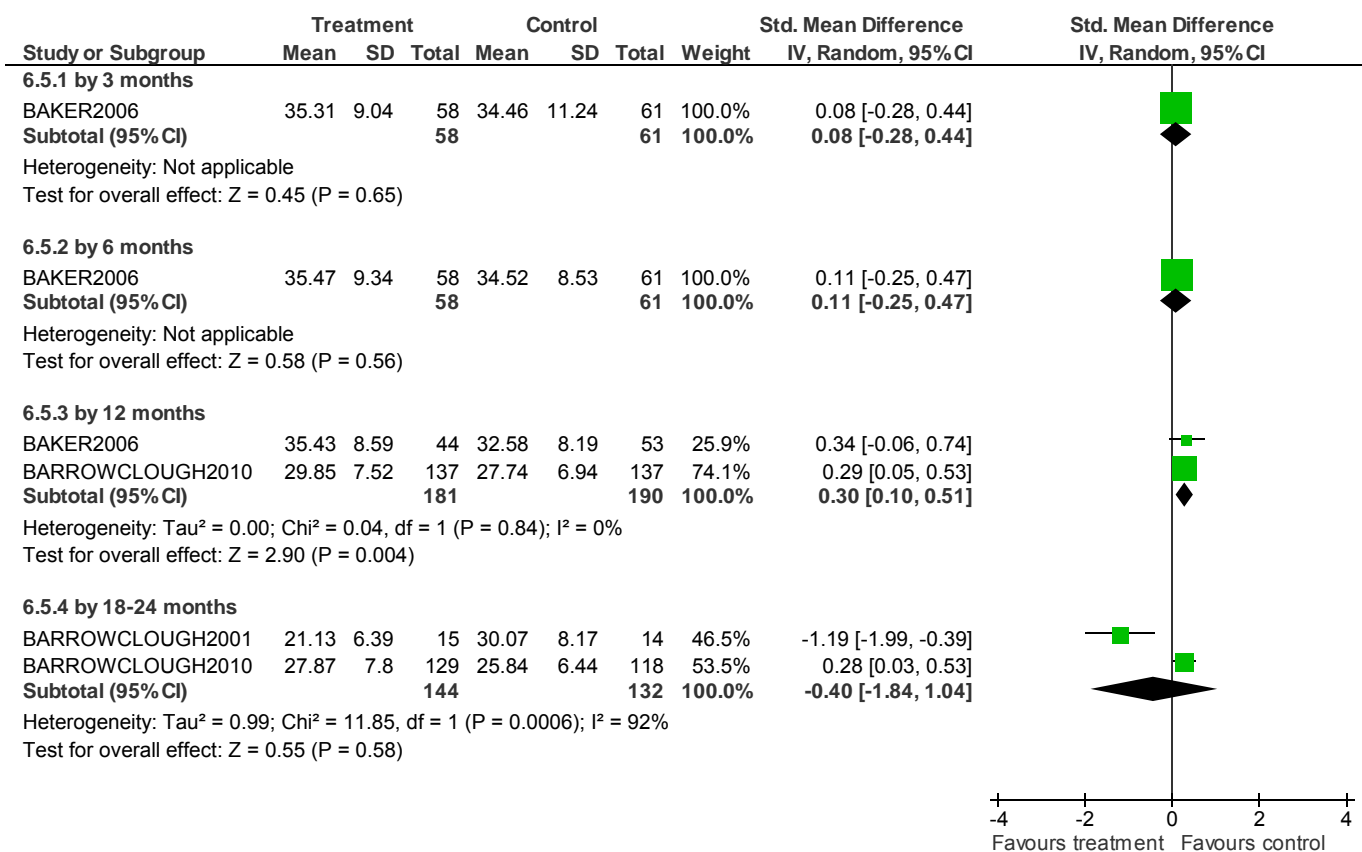


## 6.4 Mental state: 2. Total score (PANSS, high = poor)



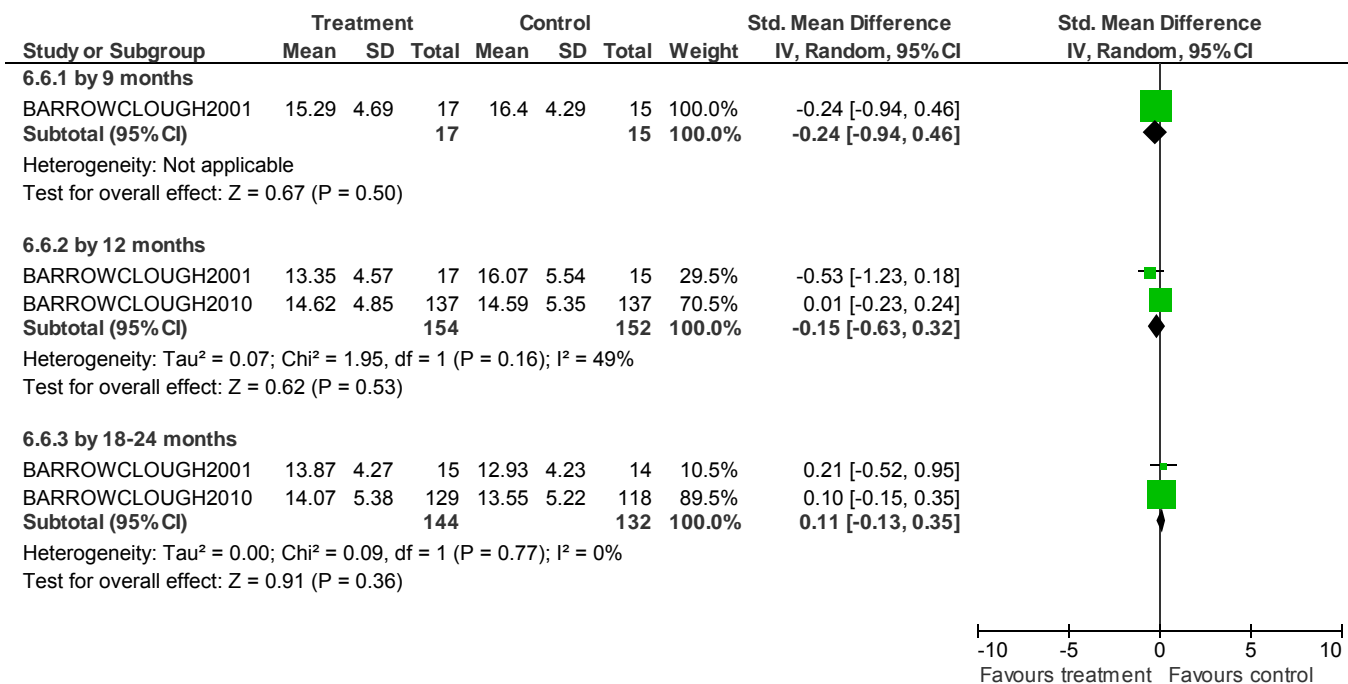
## Psychological/psychosocial interventions - Forest plots

### 6.5 Mental state: 3. General symptoms (BPRS/PANSS, high = poor)



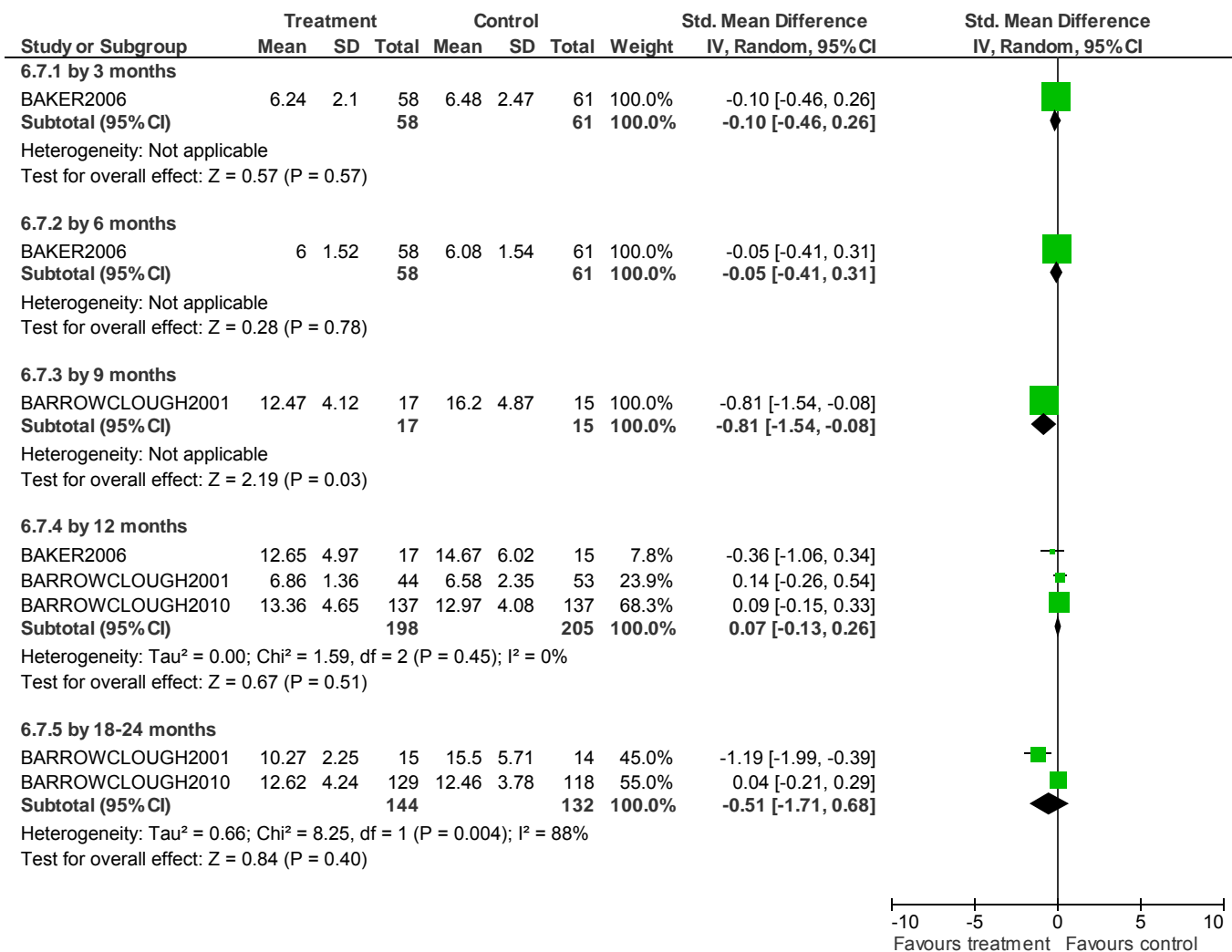
## Psychological/psychosocial interventions - Forest plots

### 6.6 Mental state: 4. Positive symptoms (PANSS, high = poor)



## Psychological/psychosocial interventions - Forest plots

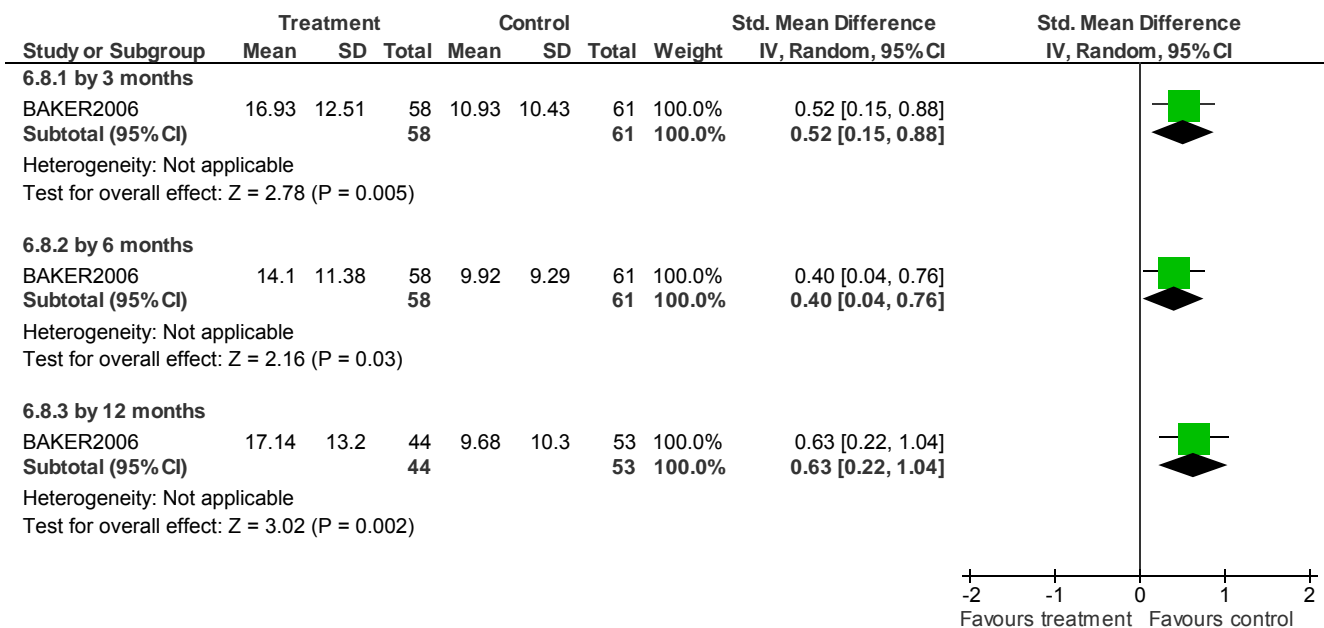
### 6.7 Mental state: 5. Negative symptoms (PANSS/BPRS, high = poor)



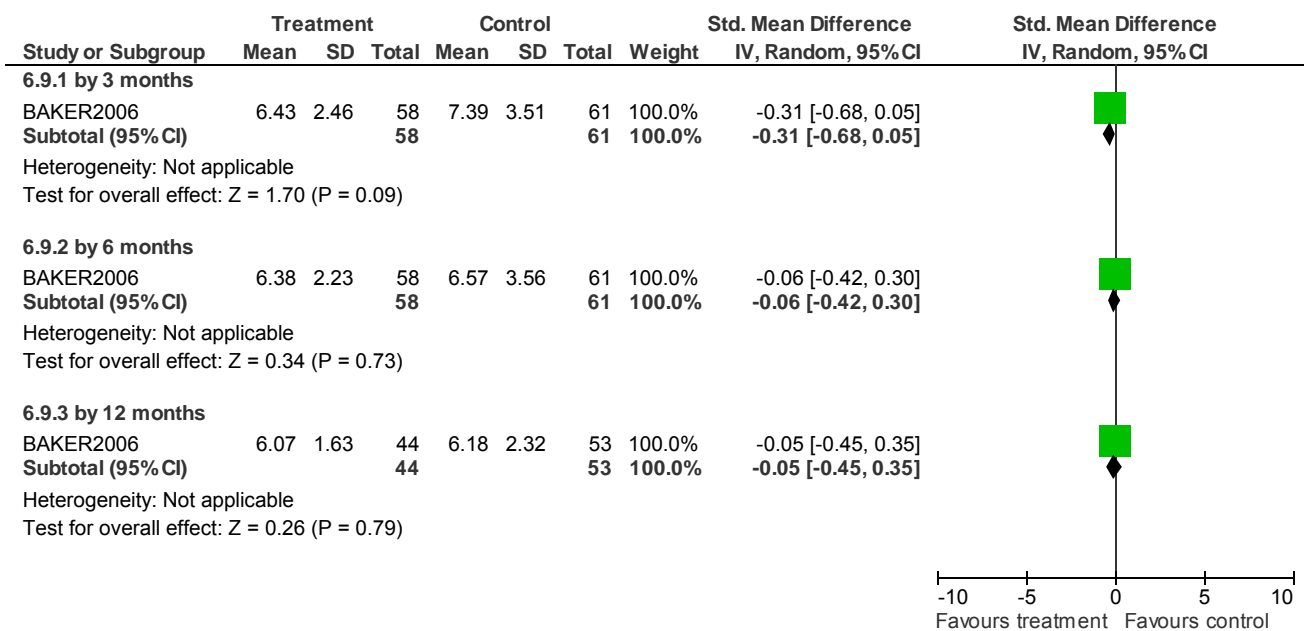


## Psychological/psychosocial interventions - Forest plots

### 6.8 Mental state: 6. Depressive symptoms (BDI-11, high = poor)

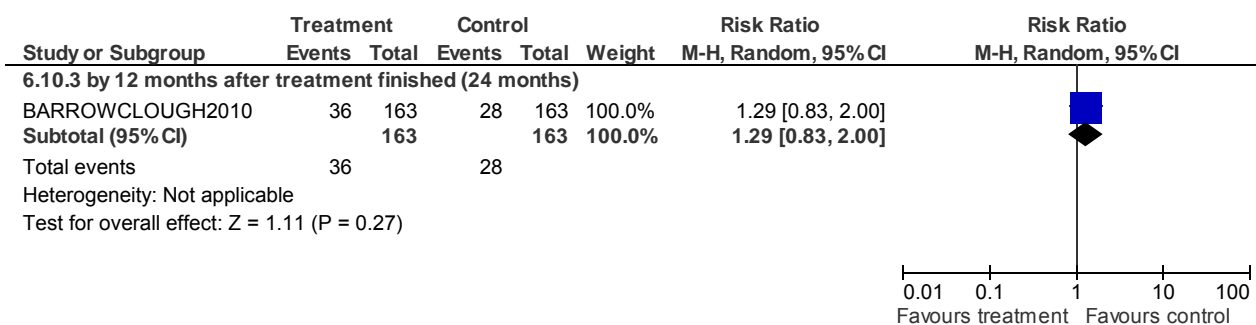


### 6.9 Mental state: 7. Manic symptoms (BPRS, high = poor)



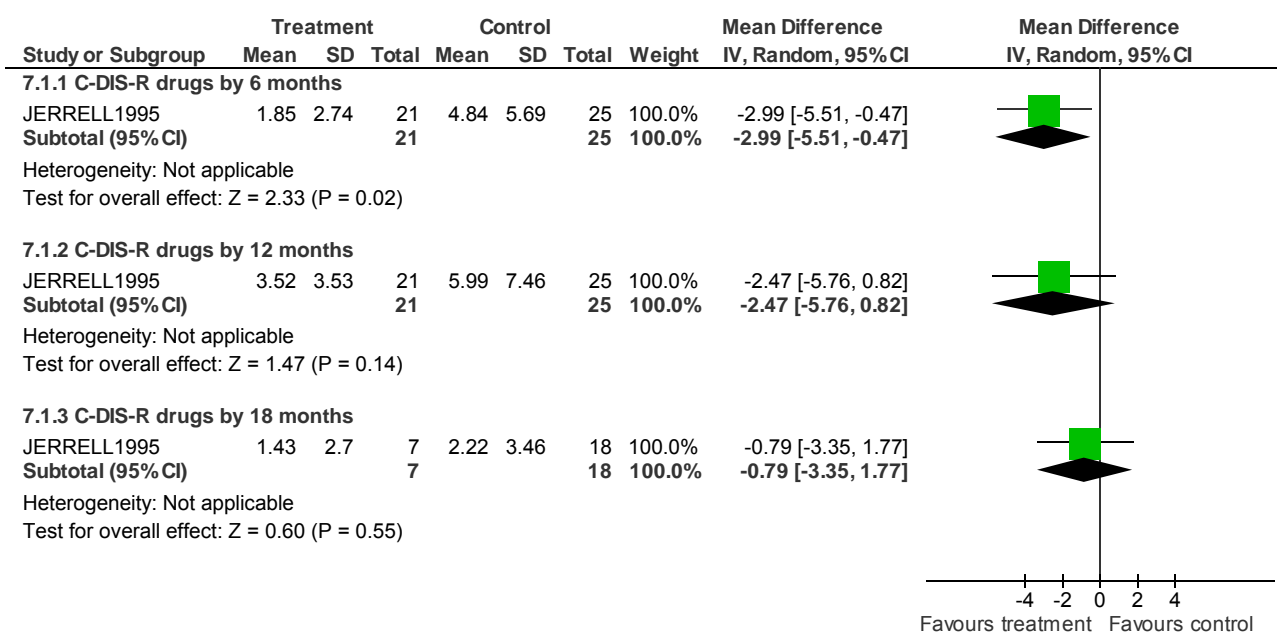
## Psychological/psychosocial interventions - Forest plots

### 6.10 Mental state: 8. Number admitted to hospital in FU (including those in hospital at the point of FU)



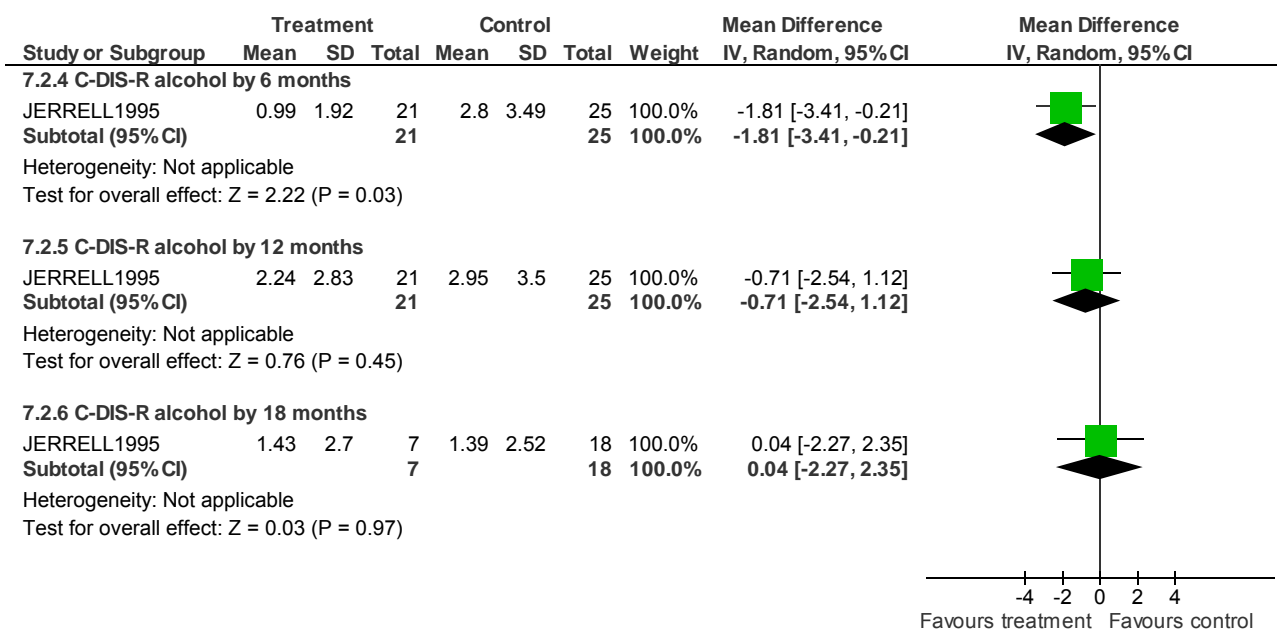
### 7 GROUP PSYCHOTHERAPY versus STANDARD CARE (critical outcomes)

#### 7.1 Substance use: 1. Average score - C-DIS-R Drugs (skewed data)

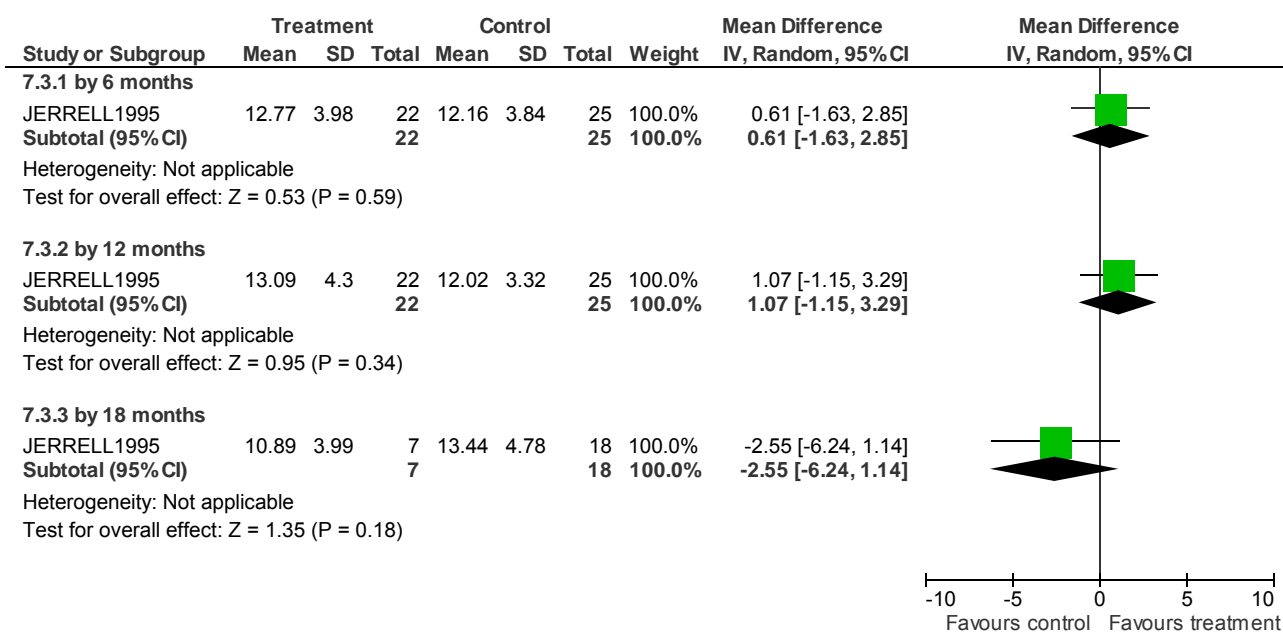


## Psychological/psychosocial interventions - Forest plots

### 7.2 Substance use: 2. Average score - C-DIS-R Alcohol (skewed data)

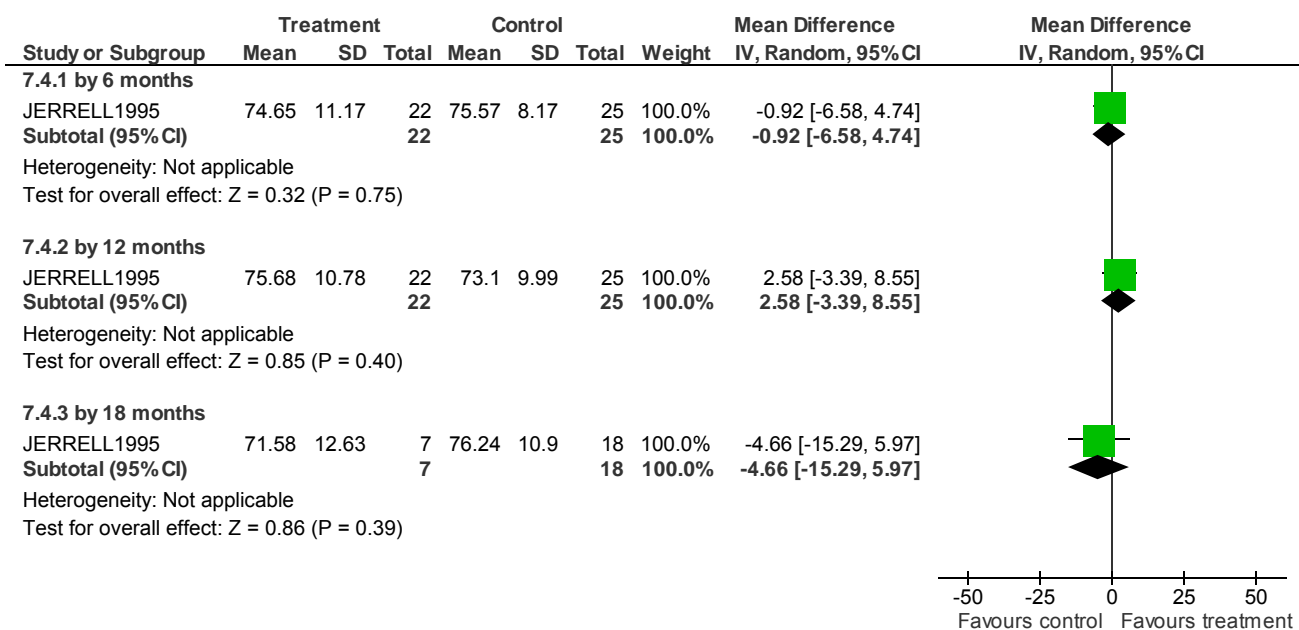


### 7.3 Functioning: 1. Average role functioning score (RFS, high = better functioning)

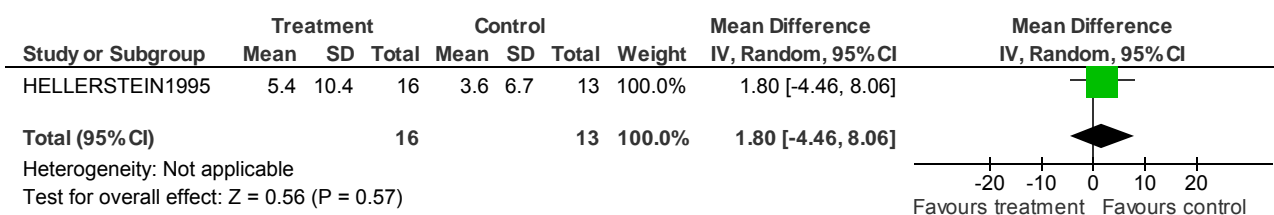


## Psychological/psychosocial interventions - Forest plots

### 7.4 Functioning: 2. Average social adjustment score (SAS, high = better functioning)

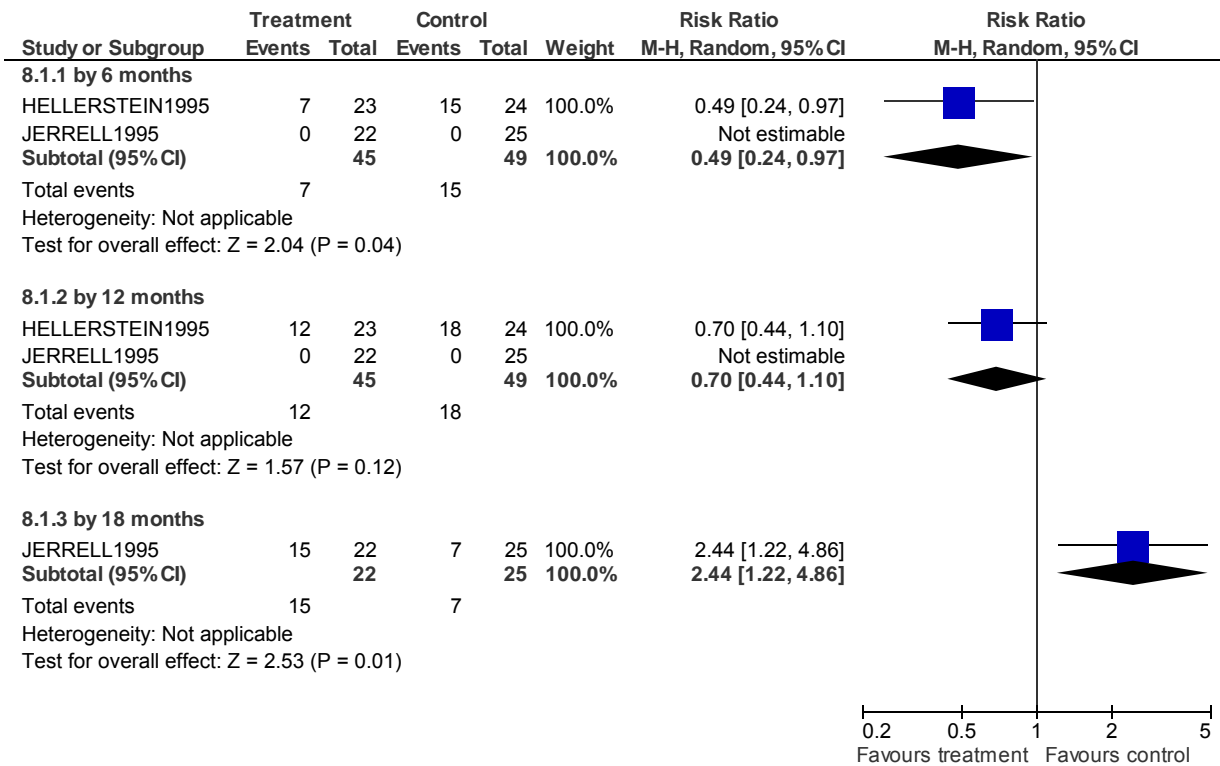


### 7.5 Service use: 1. Days in hospital (skewed data)



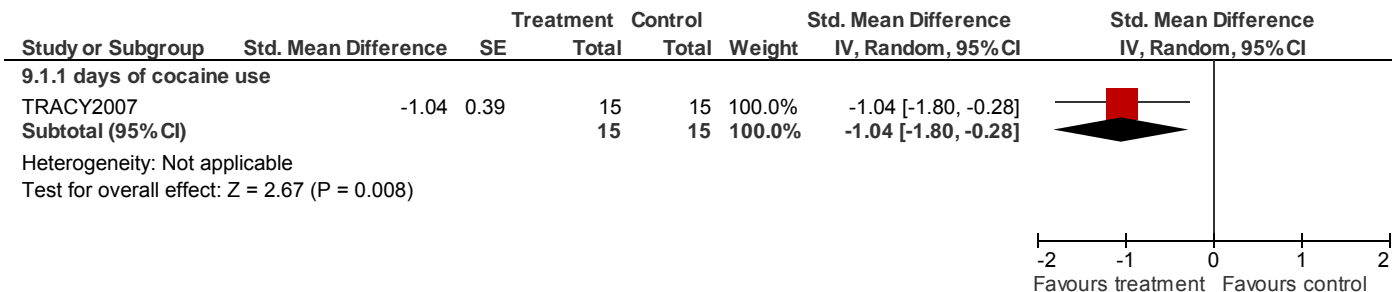
# Psychological/psychosocial interventions - Forest plots

## 8 GROUP PSYCHOTHERAPY versus STANDARD CARE (non-critical outcomes) 8.1 Lost to treatment



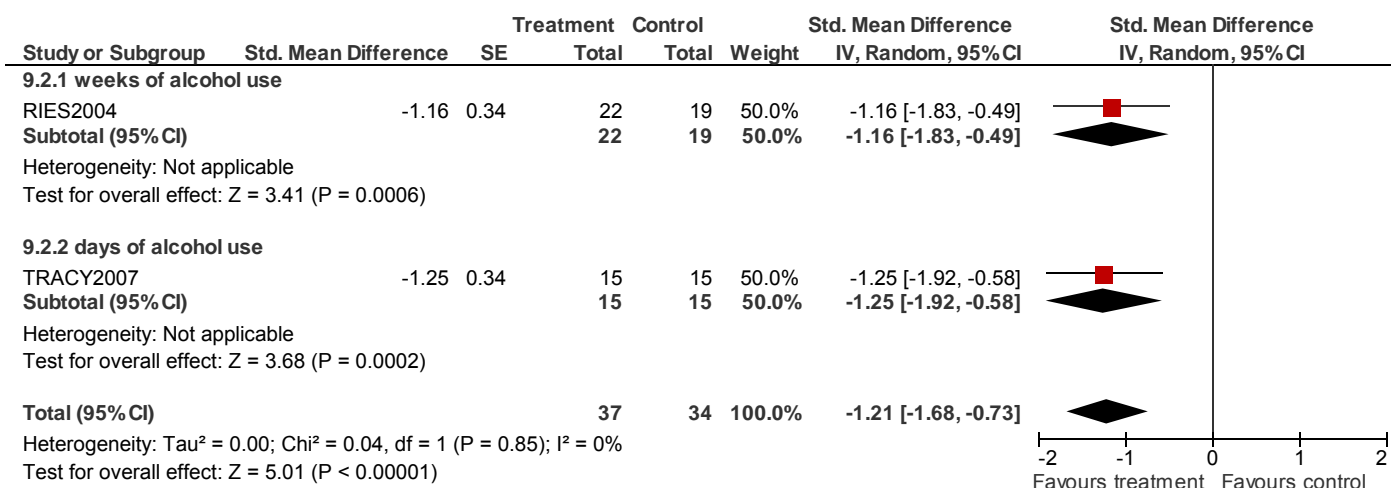
## 9 CONTINGENCY MANAGEMENT versus STANDARD CARE (critical outcomes)

### 9.1 Substance use: 1. Number of days/weeks of drug use (confirmation by urine drug screen)

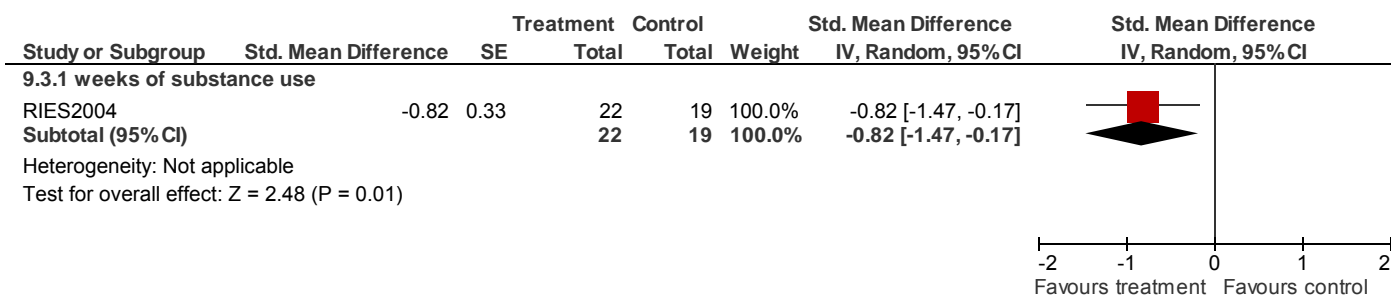


## Psychological/psychosocial interventions - Forest plots

### 9.2 Substance use: 2. Number of days/weeks of alcohol use (confirmation by breathalyser)



### 9.3 Substance use: 3. Number of days/weeks using both drugs and alcohol (confirmation by urine or breathalyser)



### 9.4 Substance use: 4. Alcohol positive breathalyser samples

