

APPENDIX 14: CLINICAL EVIDENCE FOREST PLOTS

Service Models

1	Integrated service models versus non-integrated service models (critical outcomes)	2
2	Integrated service models versus non-integrated service models (non-critical outcomes).....	7
3	Integrated ACT versus standard case management (critical outcomes).....	9
4	Integrated ACT versus standard case management (non-critical outcomes)	14
5	Staffed accommodation versus standard care (critical outcomes).....	17

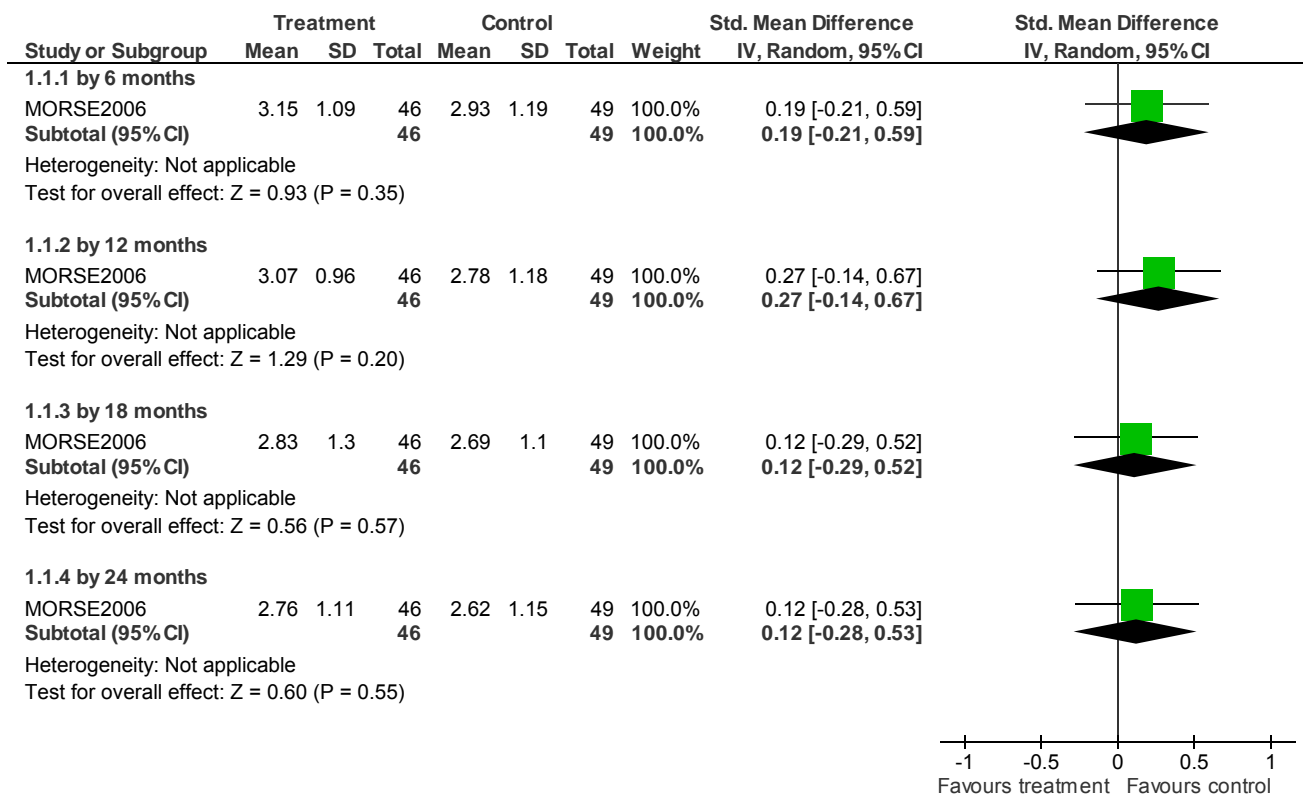
Psychological/psychosocial interventions

1	CBT versus standard care (critical outcomes).....	21
2	CBT versus standard care (non-critical outcomes)	23
3	Motivational interviewing versus standard care (critical outcomes).....	27
4	Motivational interviewing versus standard care (non-critical outcomes)	28
5	CBT + motivational interviewing versus standard care (critical outcomes)	29
6	CBT + motivational interviewing versus standard care (non-critical outcomes).....	34
7	Group psychoeducation versus standard care (critical outcomes)	41
8	Group psychoeducation versus standard care (non-critical outcomes).....	43
9	Contingency management versus standard care (critical outcomes).....	44

Service delivery models - Forest plots

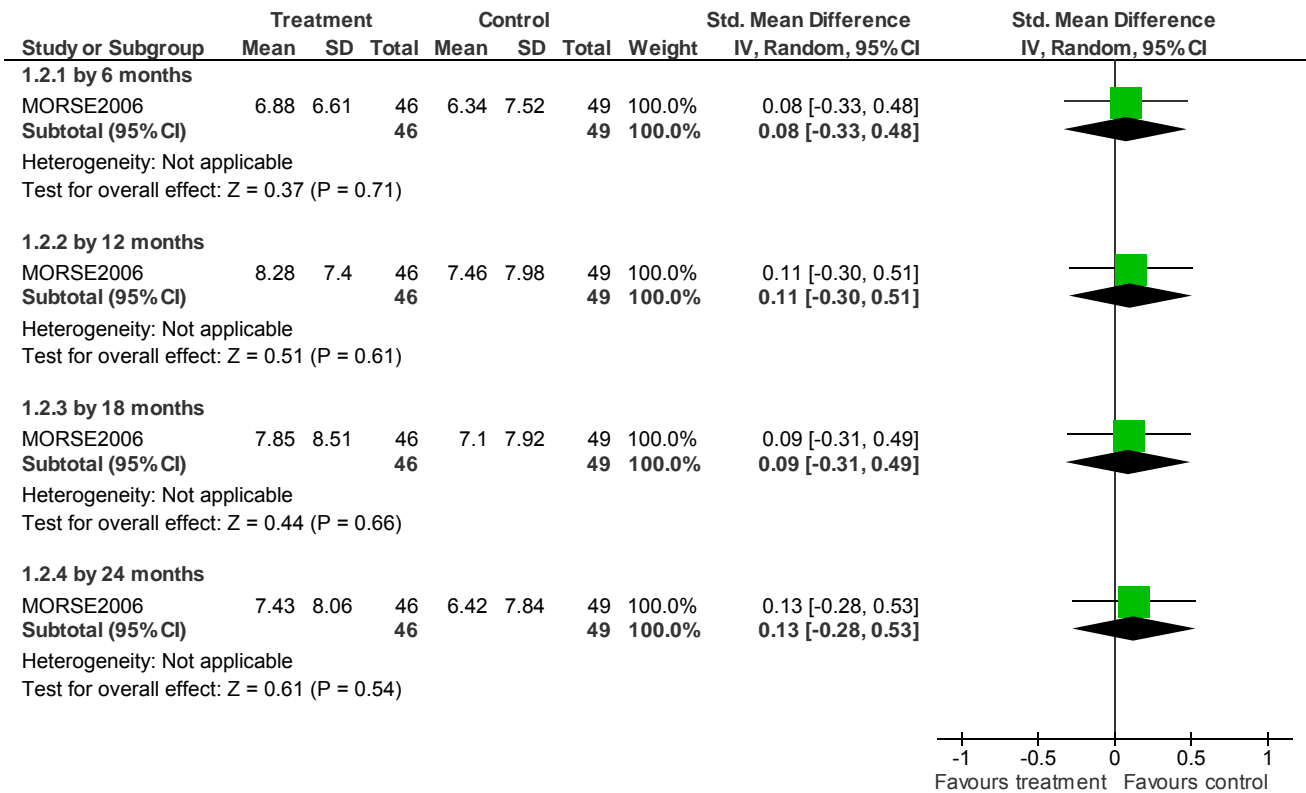
1 INTEGRATED SERVICE MODELS versus NON-INTEGRATED SERVICE MODELS (critical outcomes)

1.1 versus Standard care - Substance use: 1. Substance use rating (high=poor)



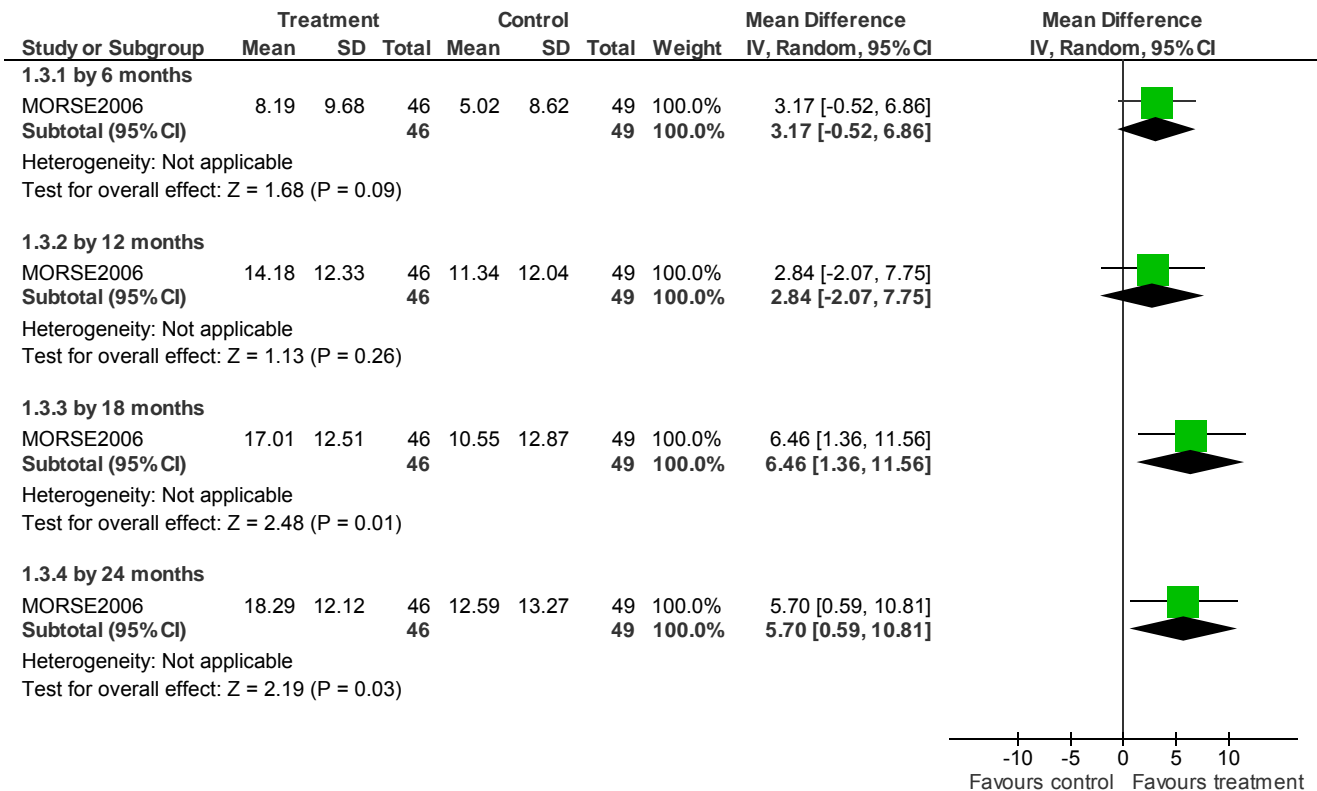
Service delivery models - Forest plots

1.2 versus Standard care - Substance use: 2. Days used substances



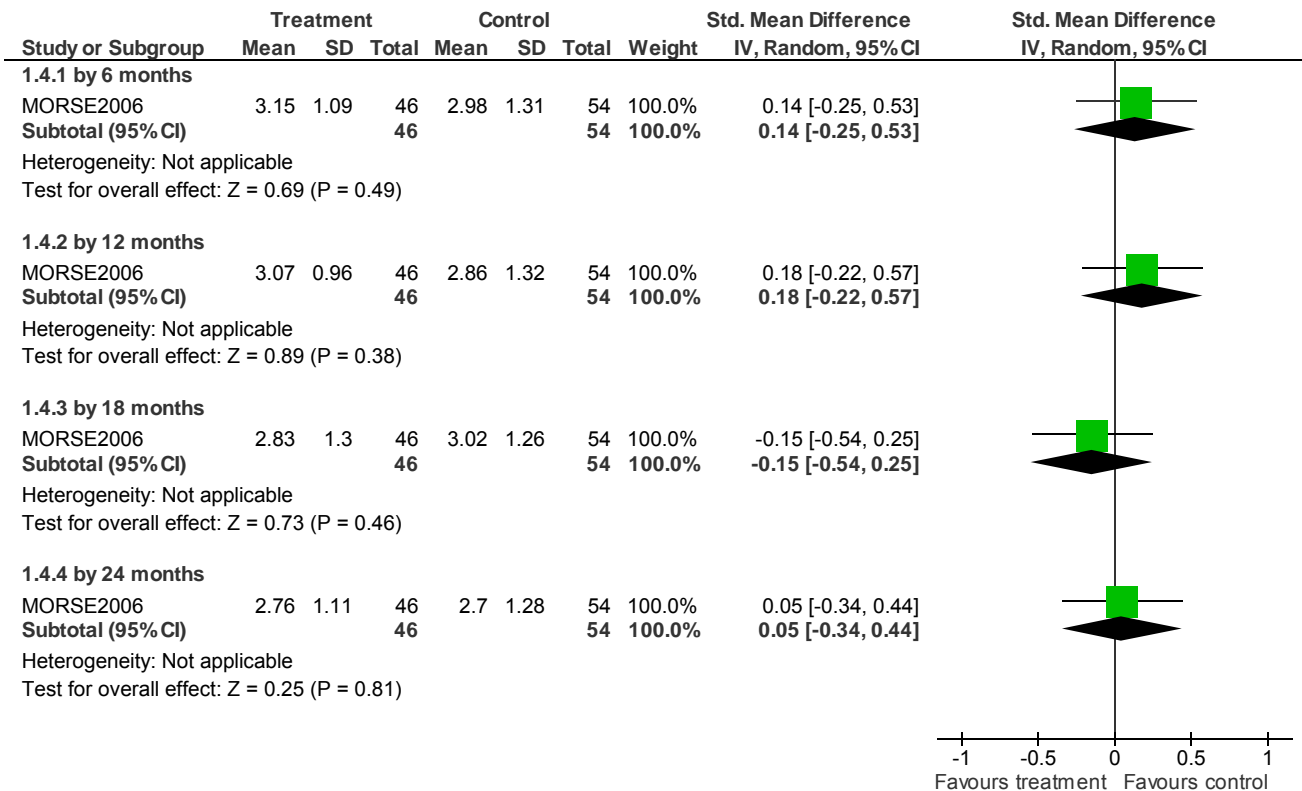
Service delivery models - Forest plots

1.3 versus Standard care - Service use: 1. Days in stable community residences (not in hospital)



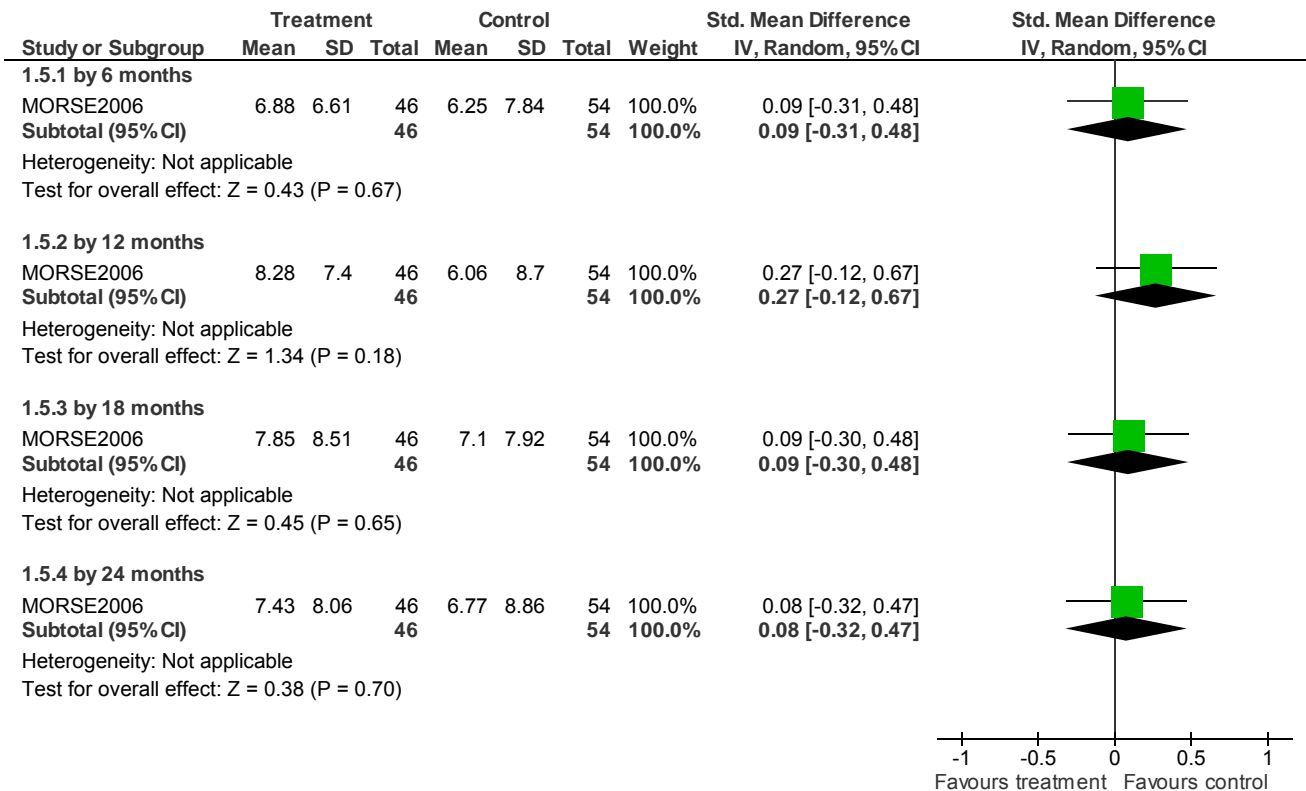
Service delivery models - Forest plots

1.4 versus Non-integrated ACT - Substance use: 1. Substance use rating (high=poor)



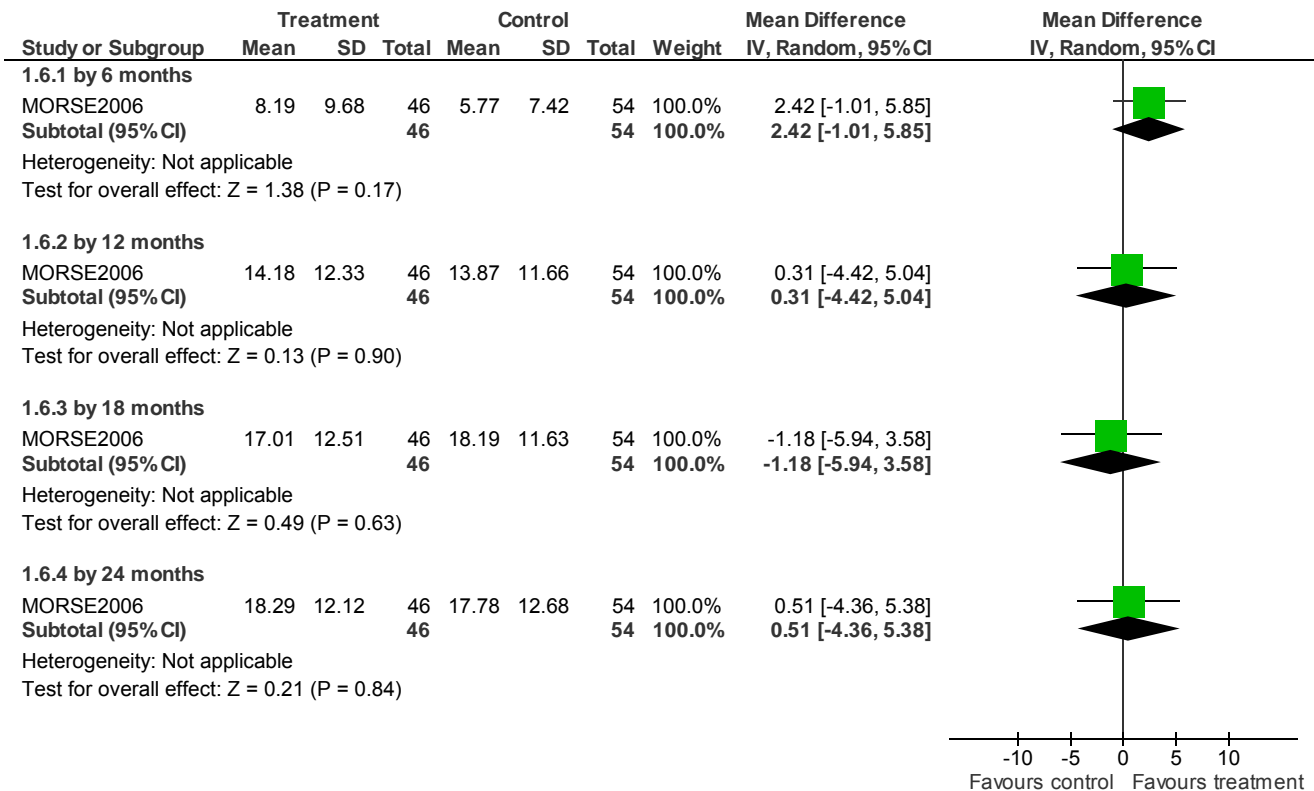
Service delivery models - Forest plots

1.5 versus Non-integrated ACT - Substance use: 2. Days used substances



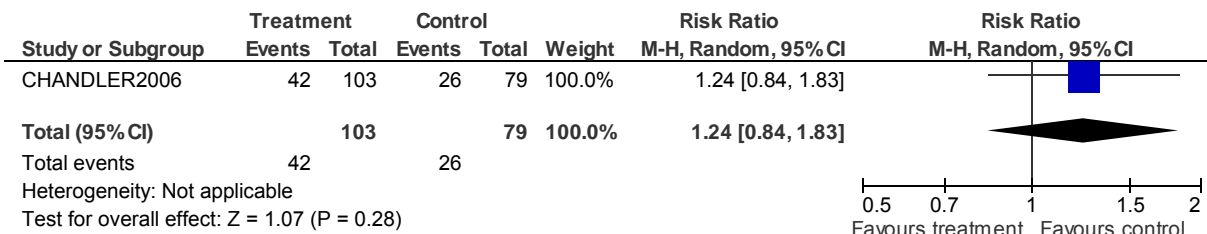
Service delivery models - Forest plots

1.6 versus Non-integrated ACT - Service use: 1. Days in stable community residences (not in hospital)

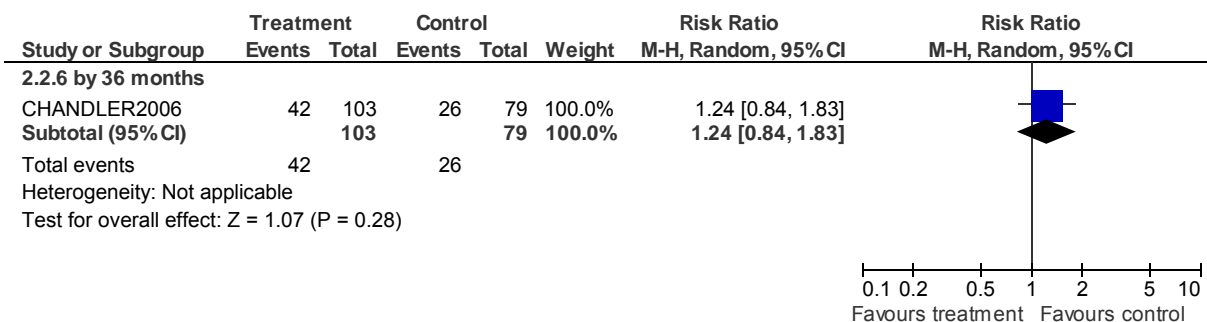


2 INTEGRATED SERVICE MODELS versus STANDARD CARE (non-critical outcomes)

2.1 Lost to treatment - by 36 months

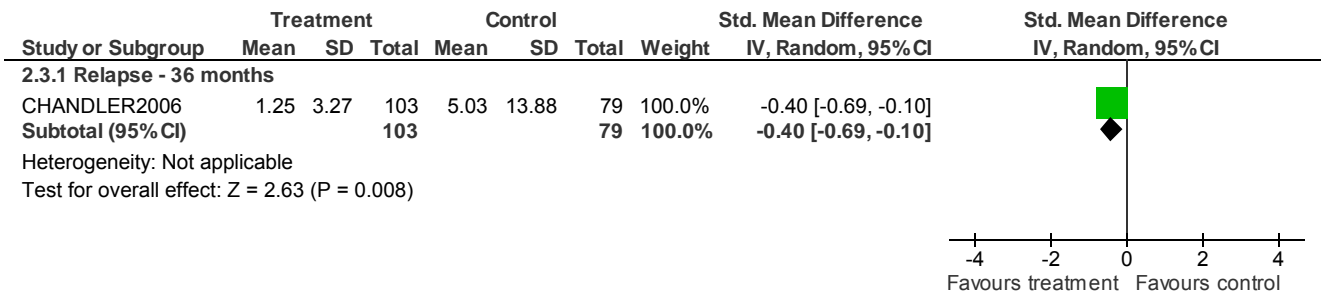


2.2 Lost to evaluation

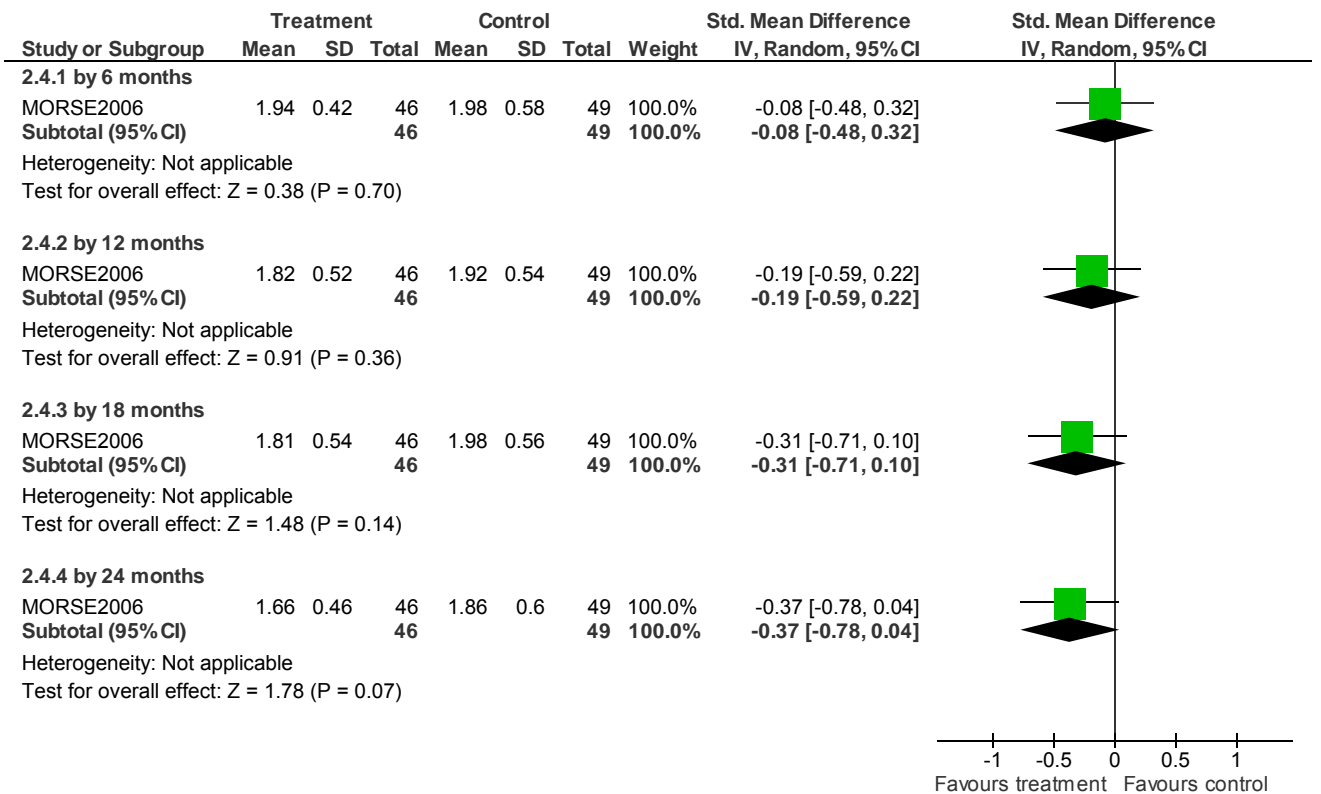


Service delivery models - Forest plots

2.3 Mental state: 1. Relapse (hospitalization days and crisis care) (skewed data)

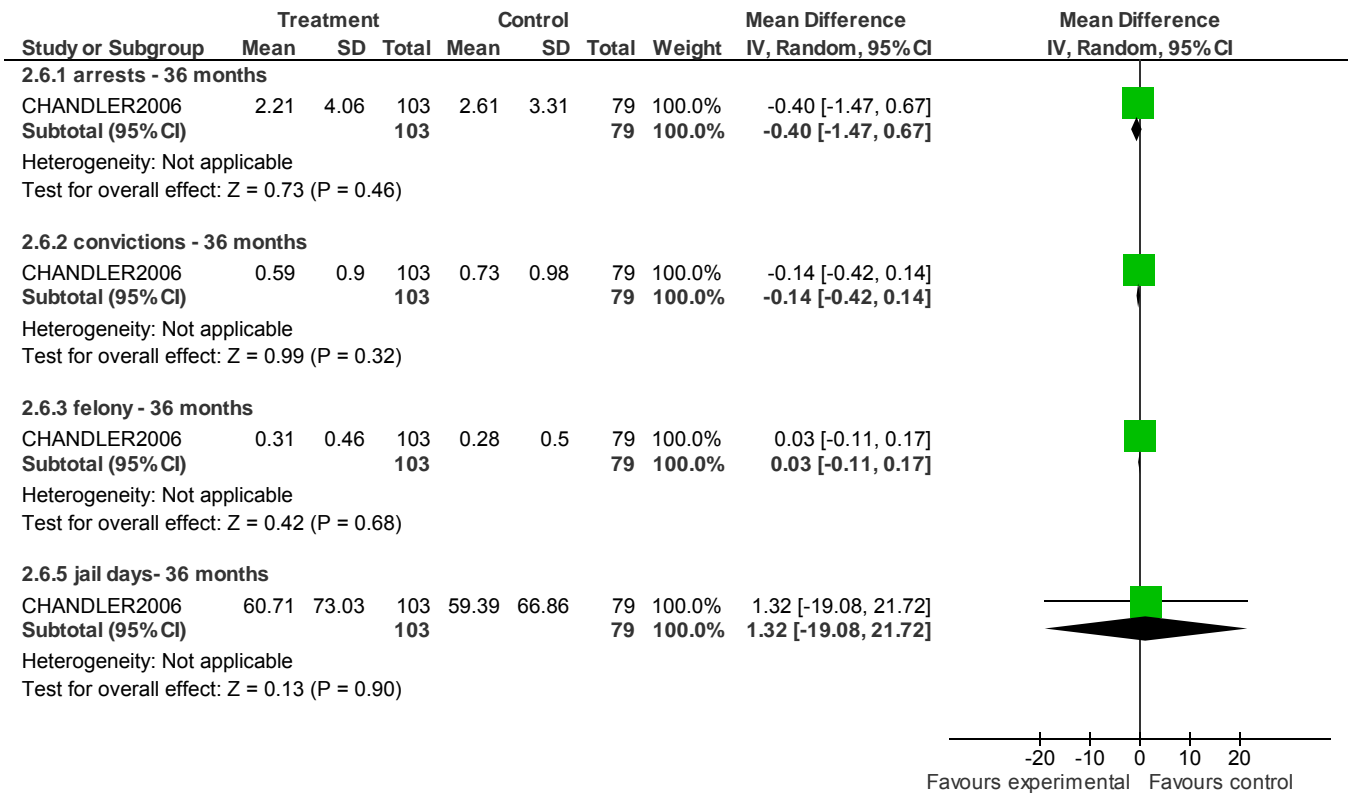


2.4 Mental state: 2. Total symptoms (BPRS, high=poor)

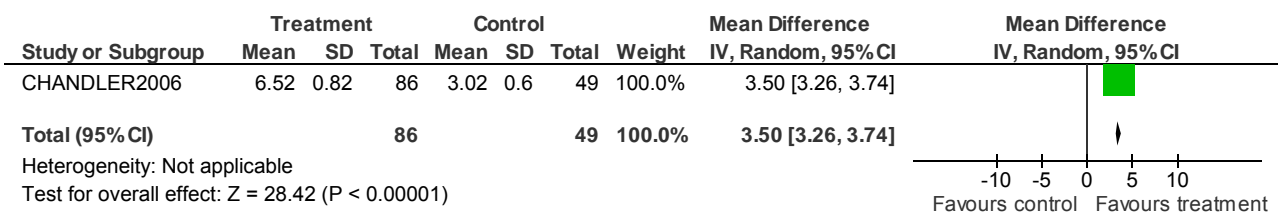


Service delivery models - Forest plots

2.6 Functioning: 2. Forensic measures (skewed data)

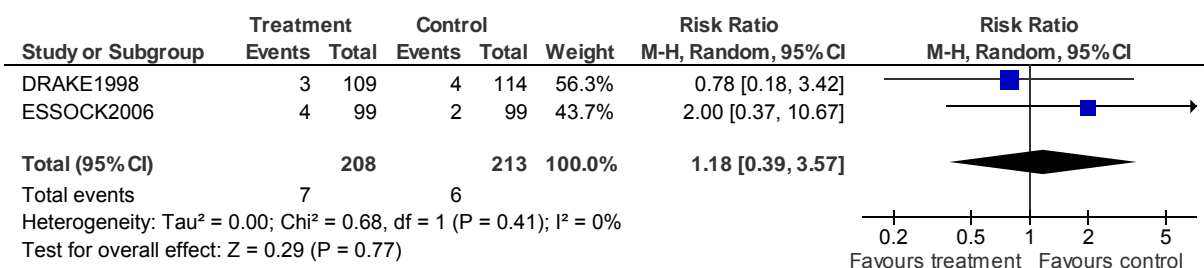


2.7 Functioning: 3. Outpatient medication service (mean no. of hours) - 36 months



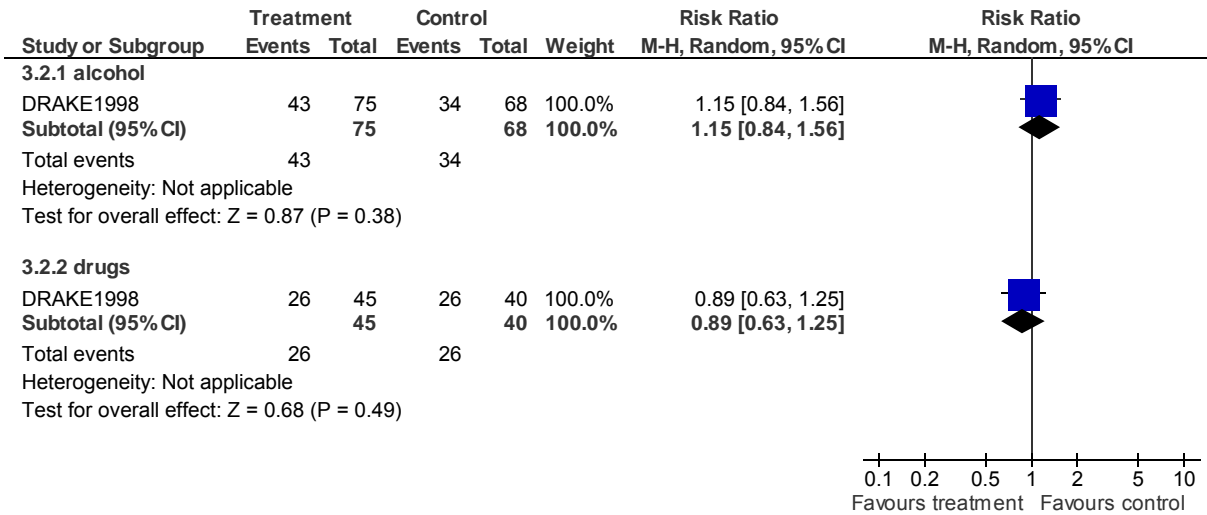
3 INTEGRATED ACT versus STANDARD CASE MANAGEMENT (critical outcomes)

3.1 Death - by 36 months



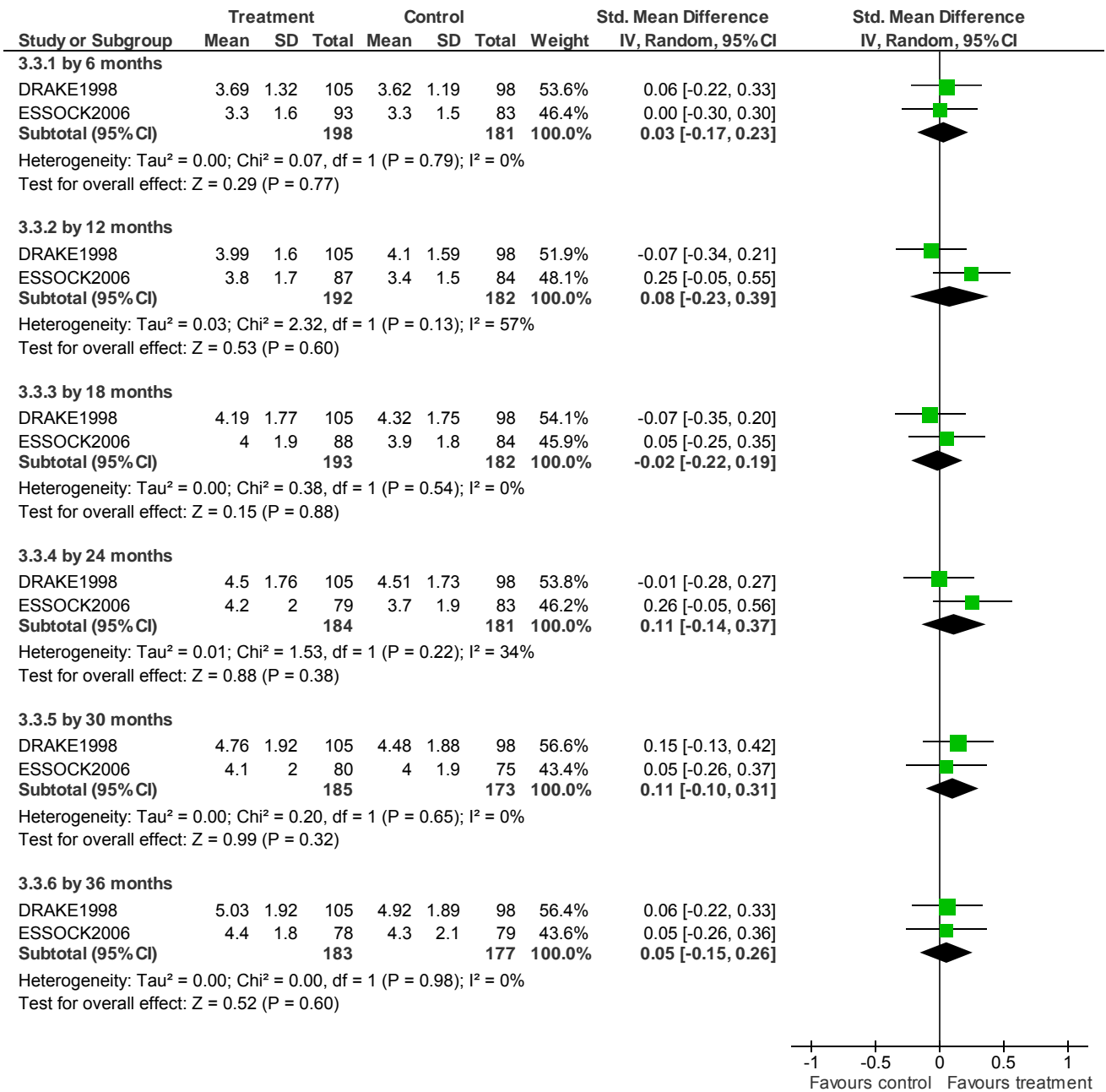
Service delivery models - Forest plots

3.2 Substance use: 1. Not in remission - by 36 months



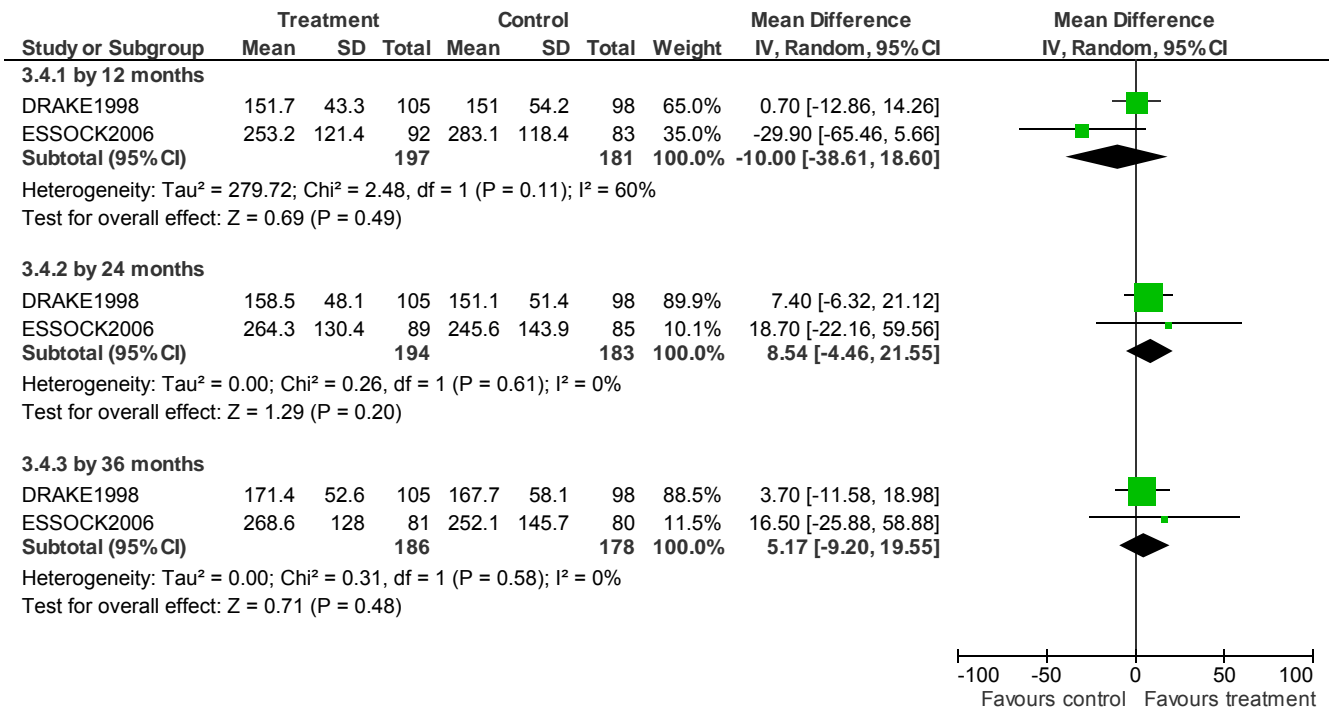
Service delivery models - Forest plots

3.3 Substance use: 2. Substance abuse (SATS, low=poor)



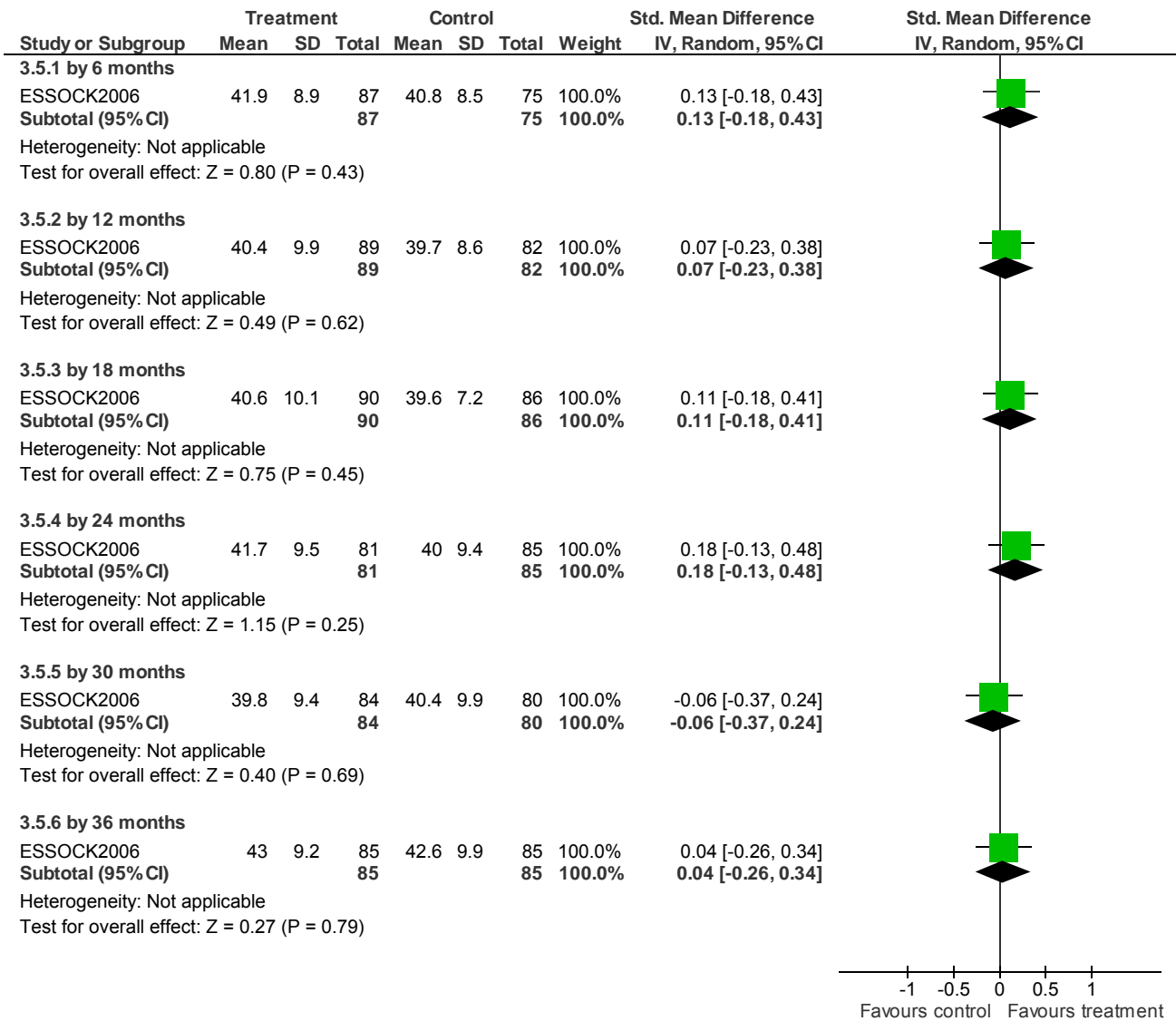
Service delivery models - Forest plots

3.4 Service use: 1. Days in stable community residences (not in hospital)



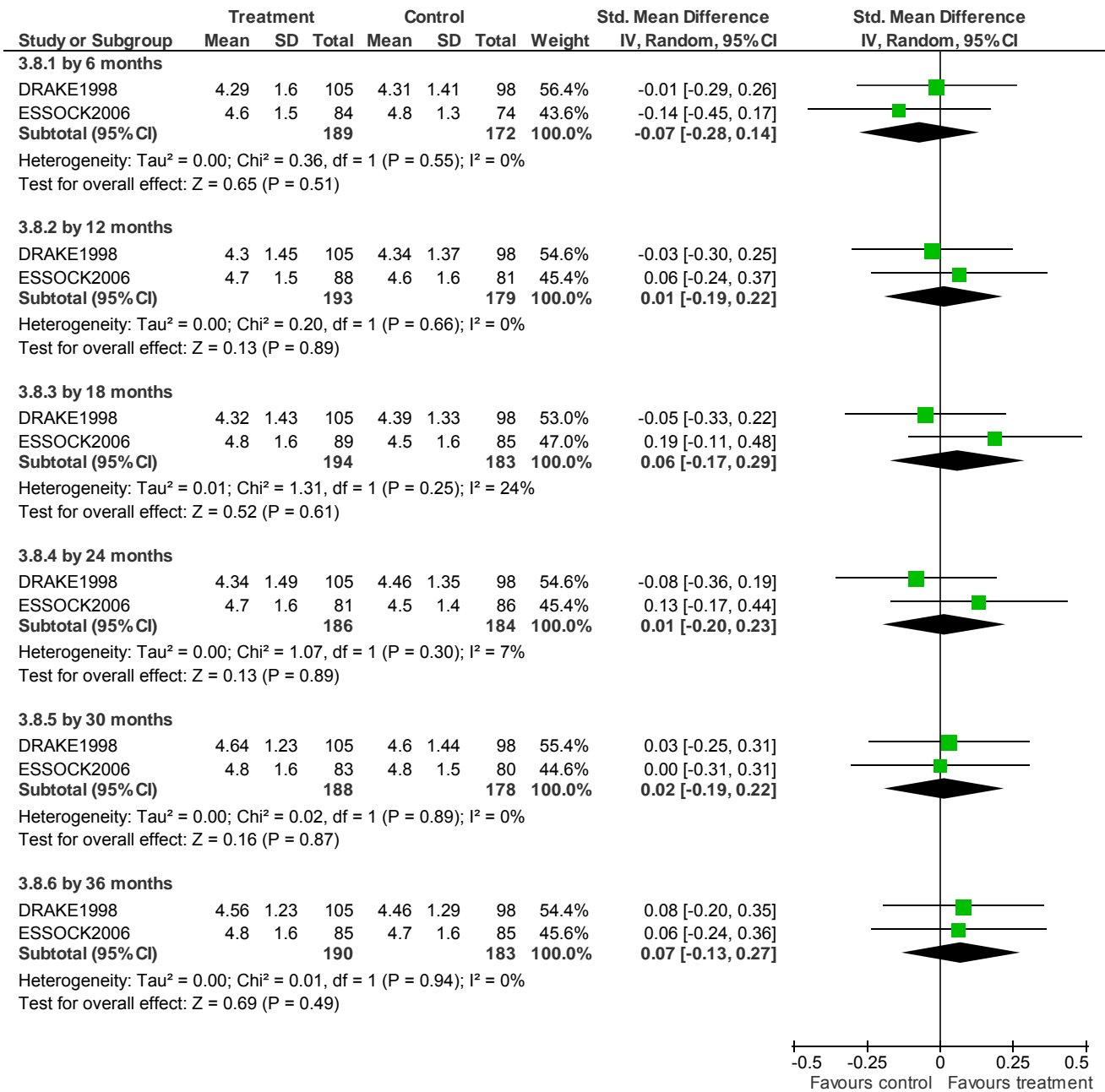
Service delivery models - Forest plots

3.5 Functioning: 1. Average general score (GAS, low=poor)



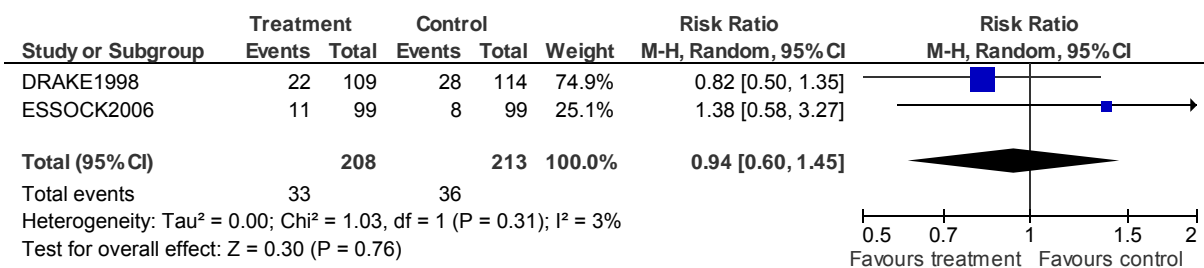
Service delivery models - Forest plots

3.8 Satisfaction: Average general score (QOLI, low=poor)



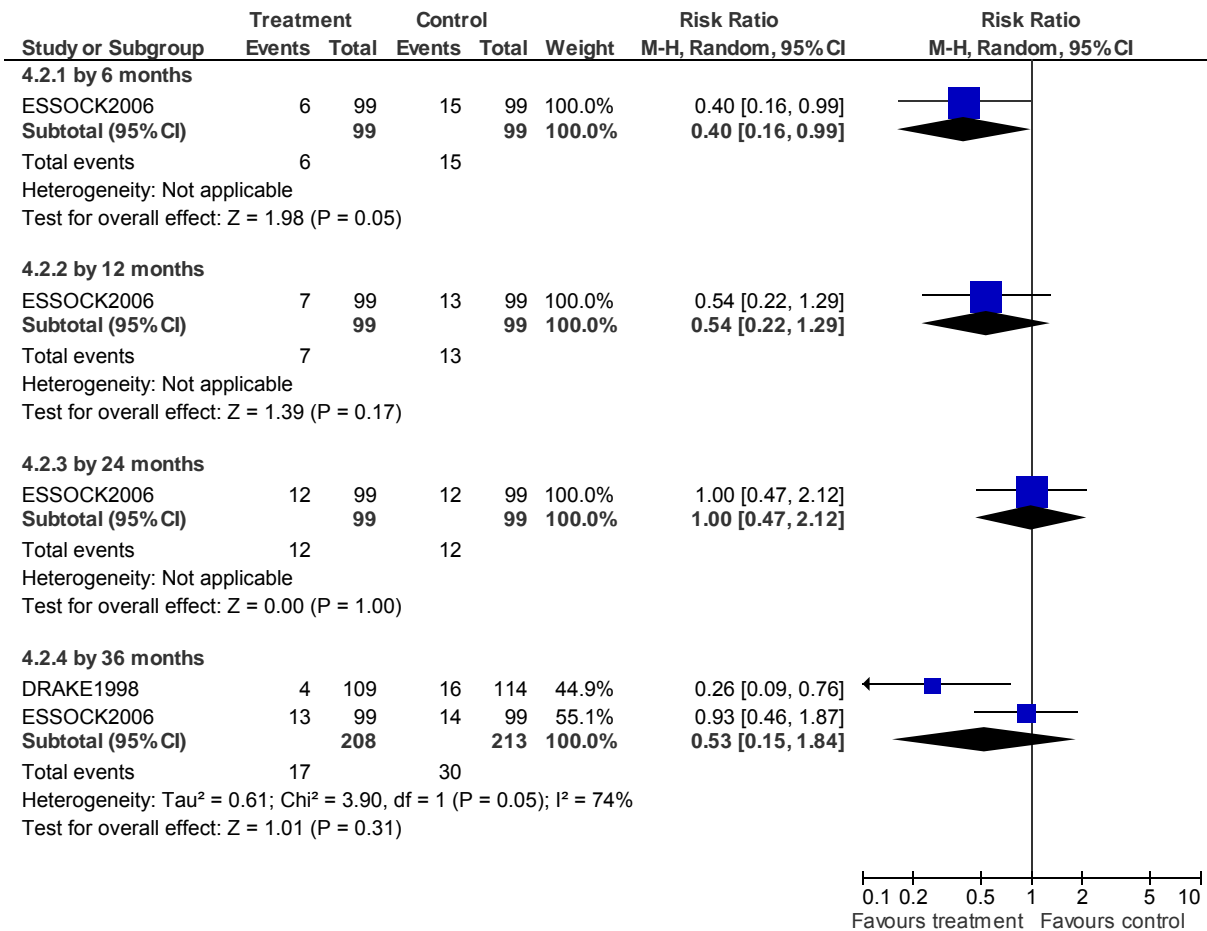
4 INTEGRATED ACT versus STANDARD CASE MANAGEMENT (non-critical outcomes)

4.1 Lost to treatment - by 36 months

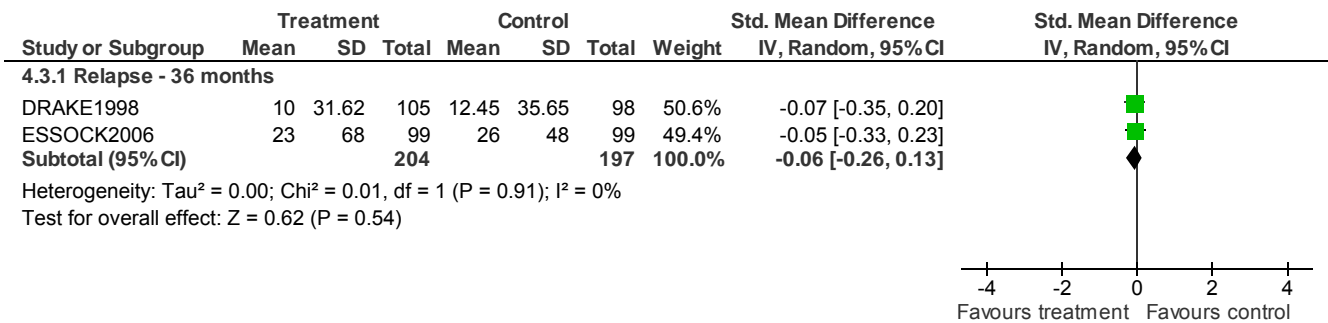


Service delivery models - Forest plots

4.2 Lost to evaluation

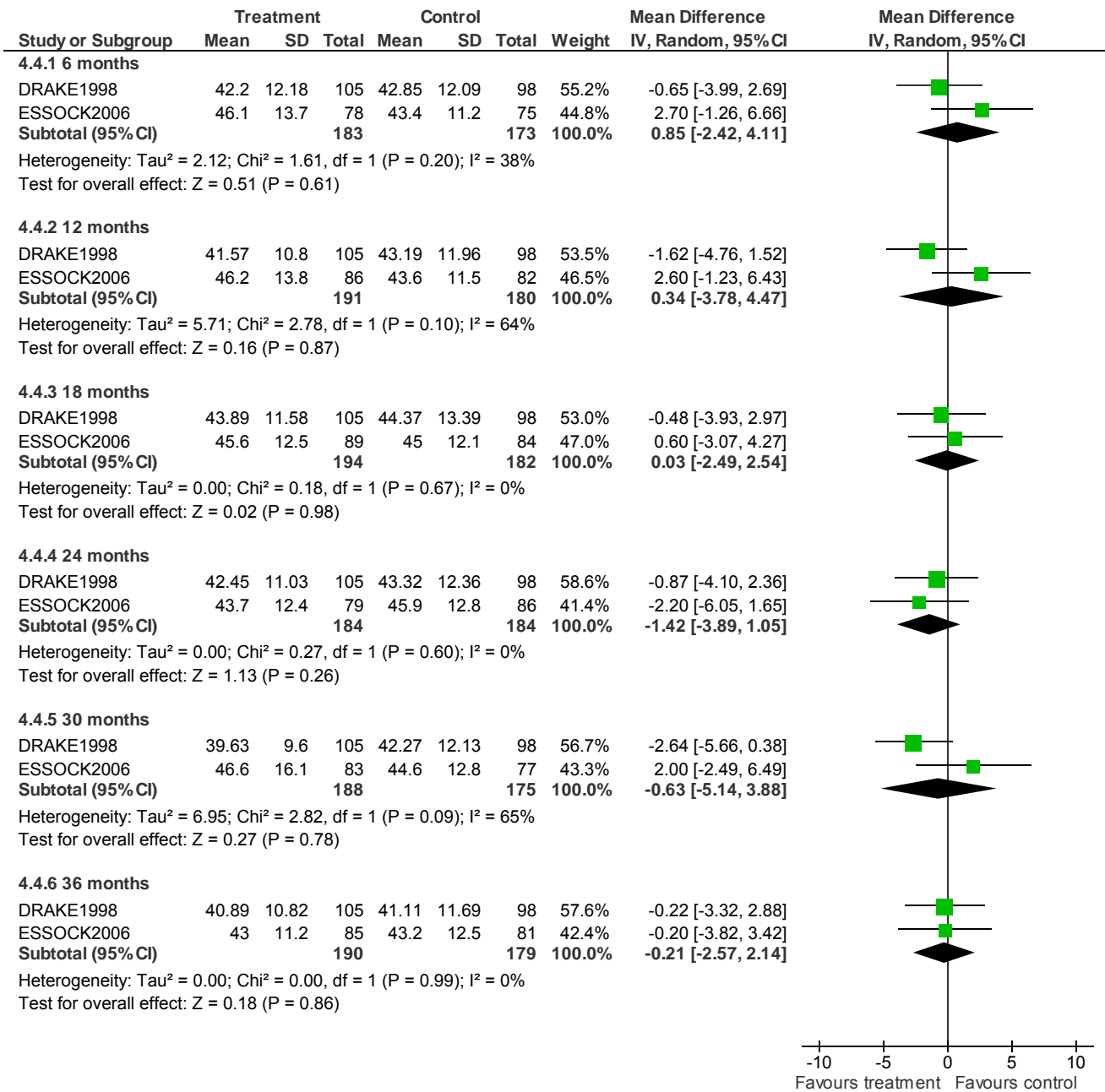


4.3 Mental state: 1. Relapse (hospitalization days and crisis care) (skewed data)

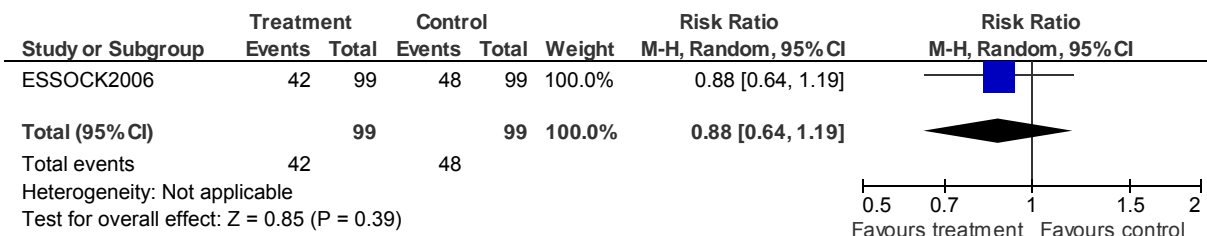


Service delivery models - Forest plots

4.4 Mental state: 2. Average score (BPRS, skewed data)

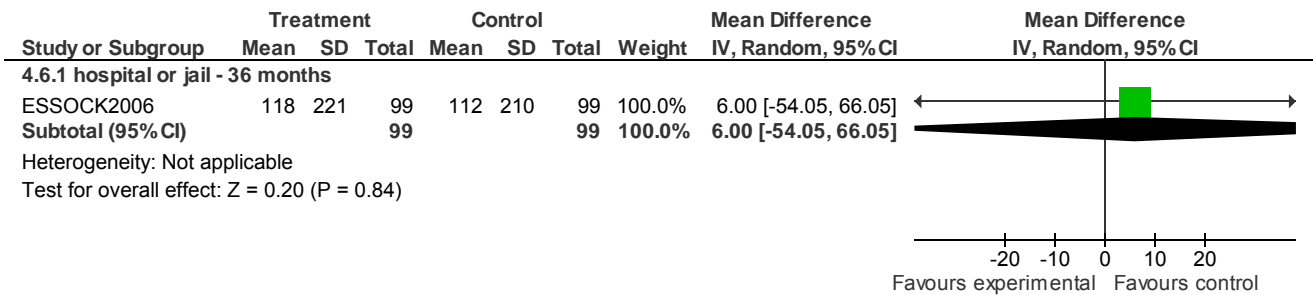


4.5 Service use: 2. Number hospitalised - during the 36 month study period



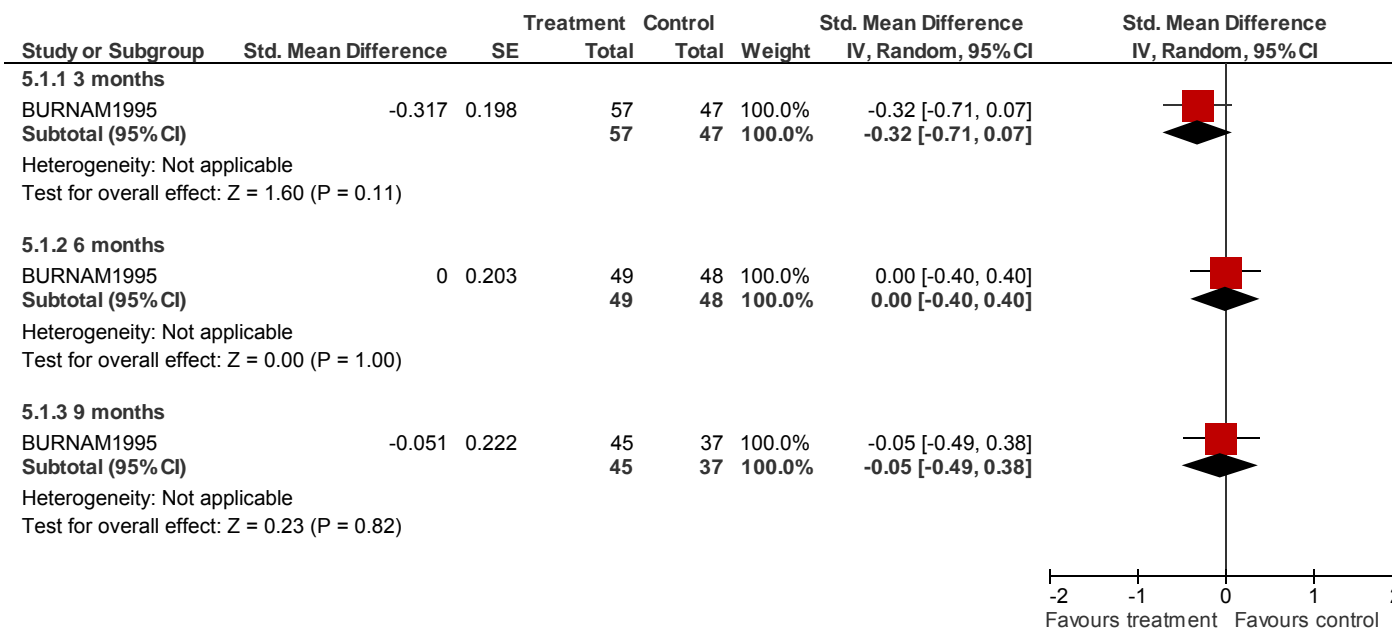
Service delivery models - Forest plots

4.6 Functioning: 2. Forensic measures (skewed data)



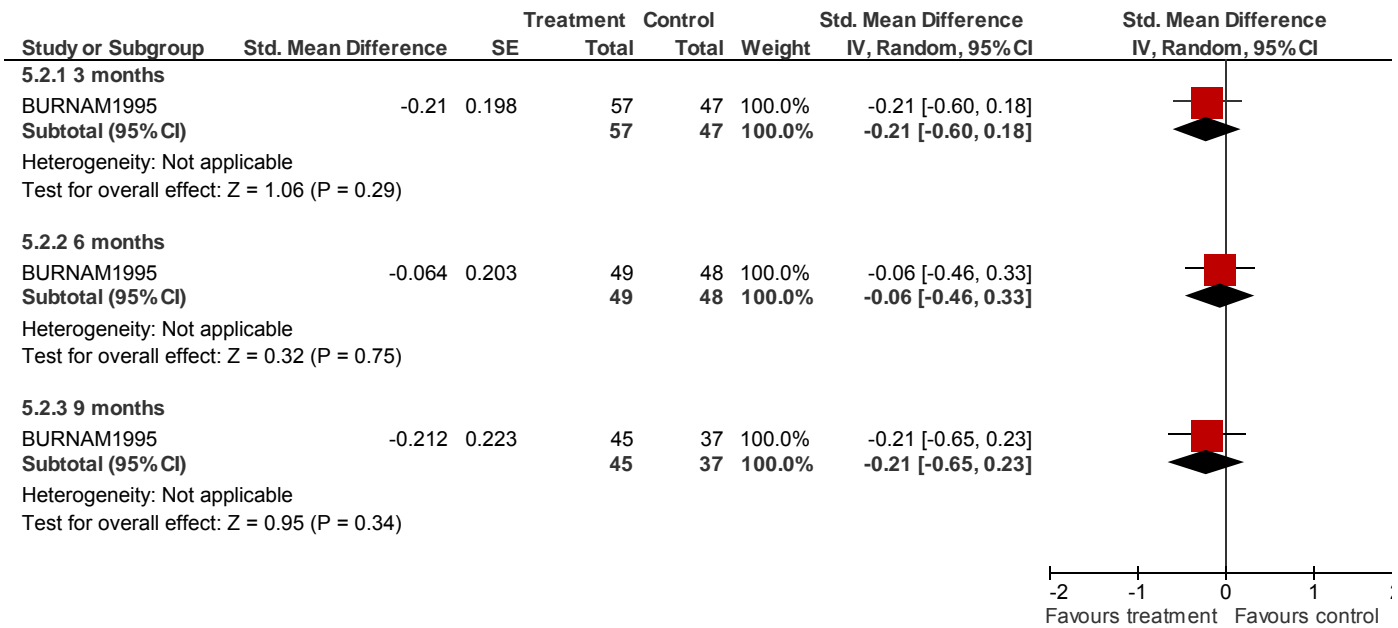
5 STAFF ACCOMMODATION versus STANDARD CARE (critical outcomes)

5.1 Substance use: 1. Days used alcohol (low=poor)

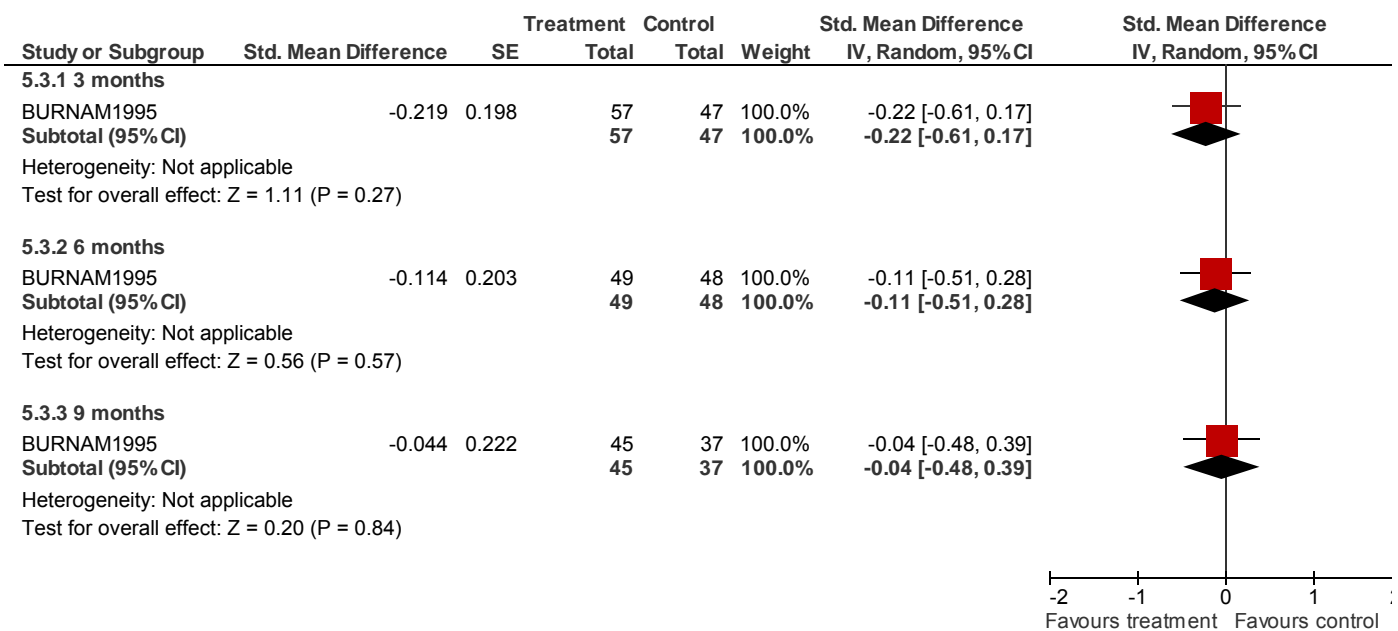


Service delivery models - Forest plots

5.2 Substance use: 2. Level of alcohol use (low=poor)

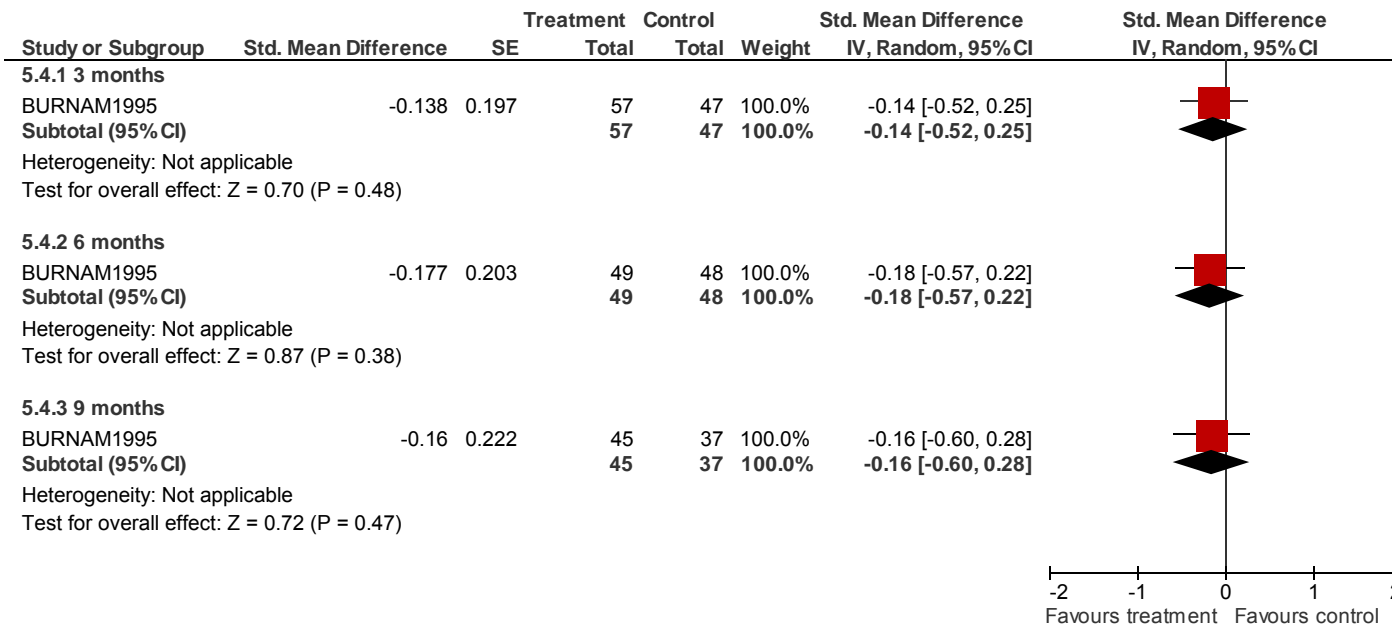


5.3 Substance use: 3. Days used drugs (low=poor)

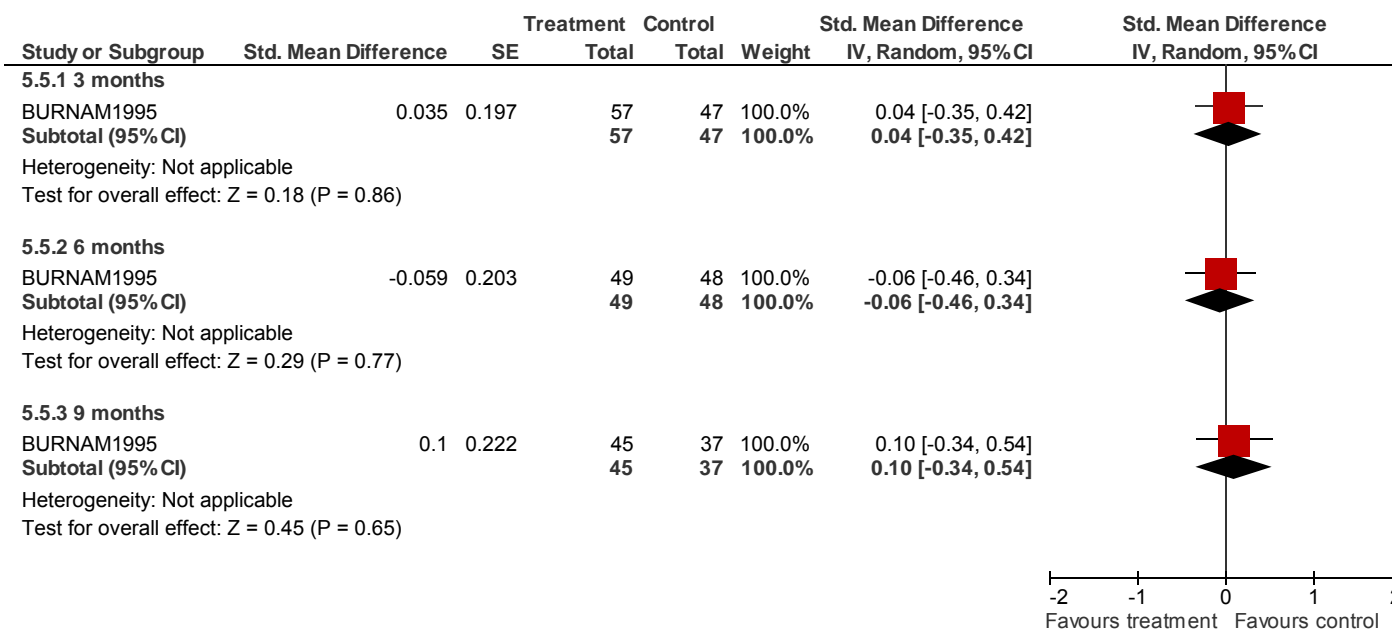


Service delivery models - Forest plots

5.4 Substance use: 4. Severity of drug use (low=poor)

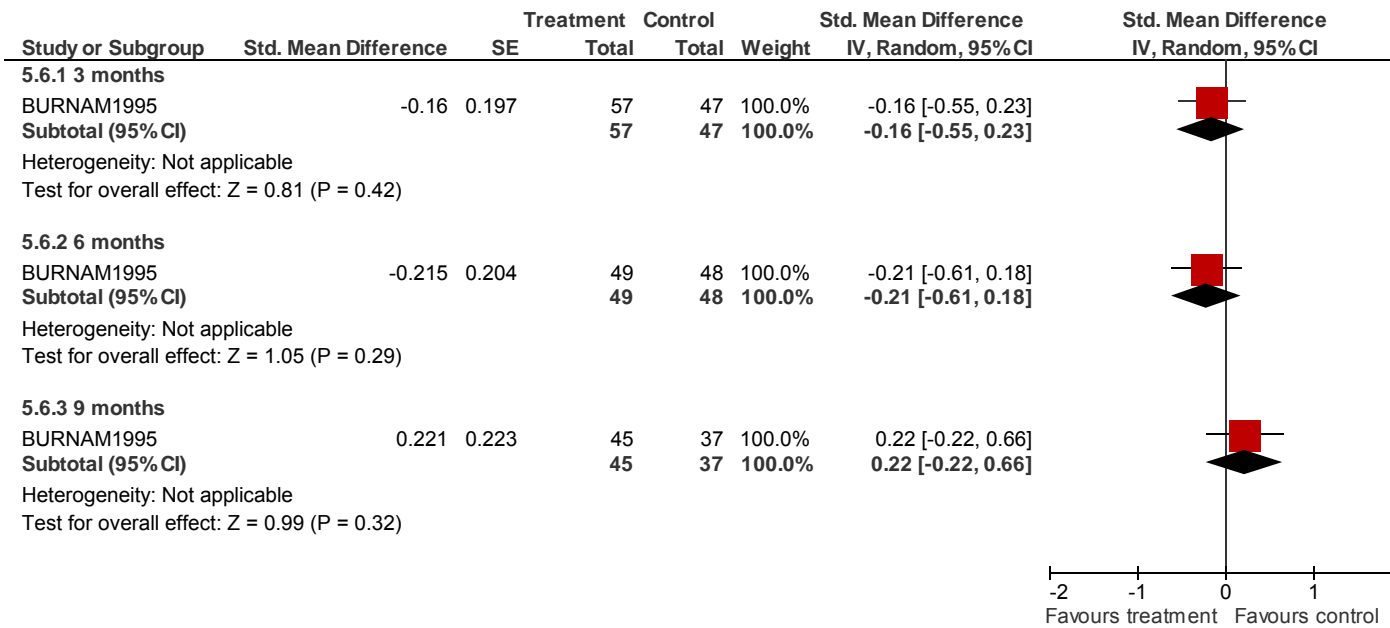


5.5 Functioning: 1. %time on streets (low=poor)



Service delivery models - Forest plots

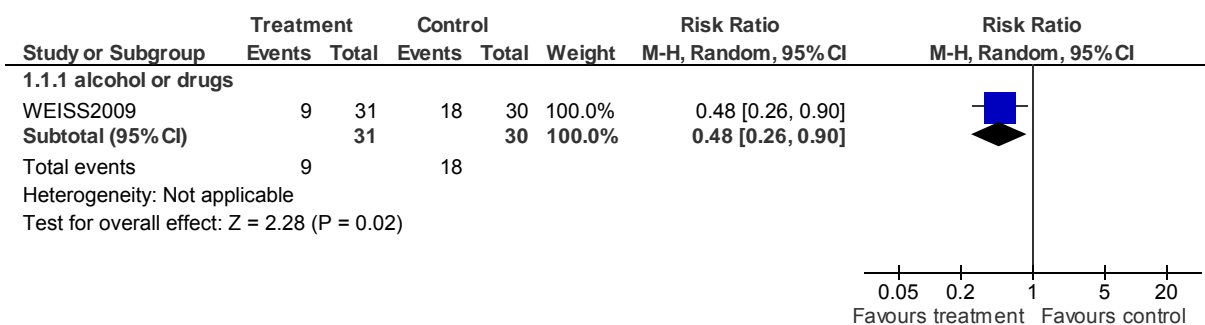
5.6 Functioning: 2. %time in independent housing (low=poor)



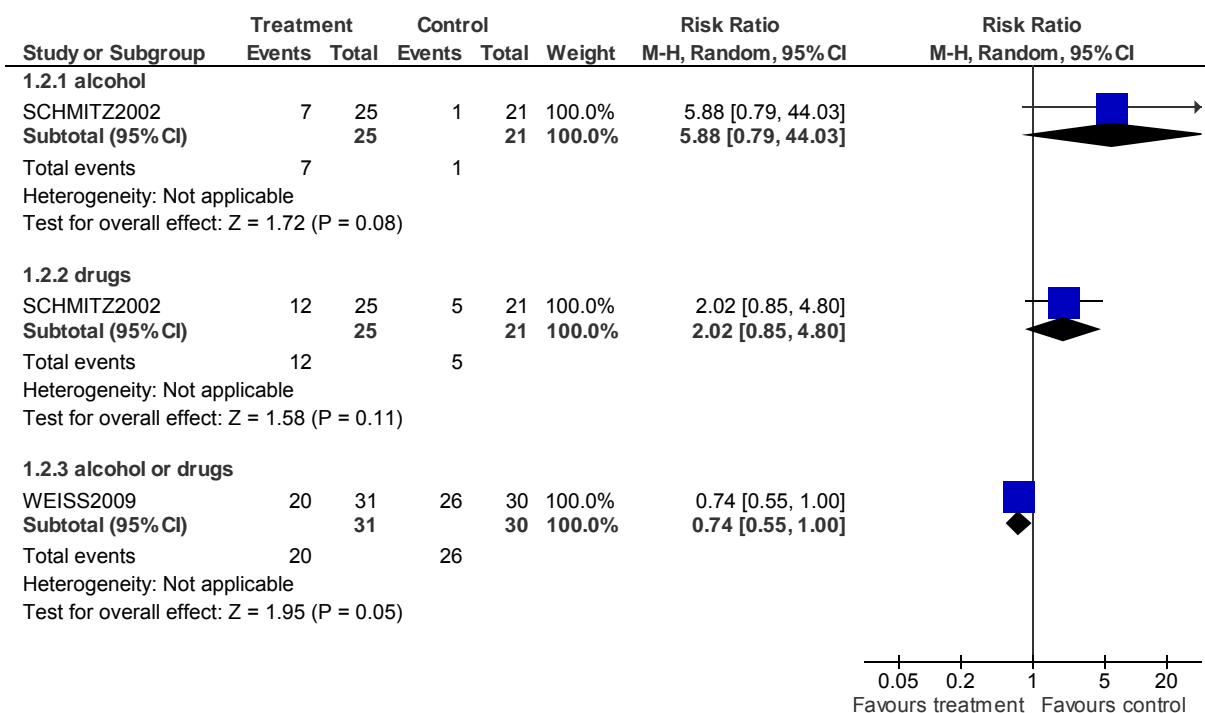
Psychological/psychosocial interventions - Forest plots

1 CBT versus STANDARD CARE (critical outcomes)

1.1 Substance use: 1. Using substances - by 1 month

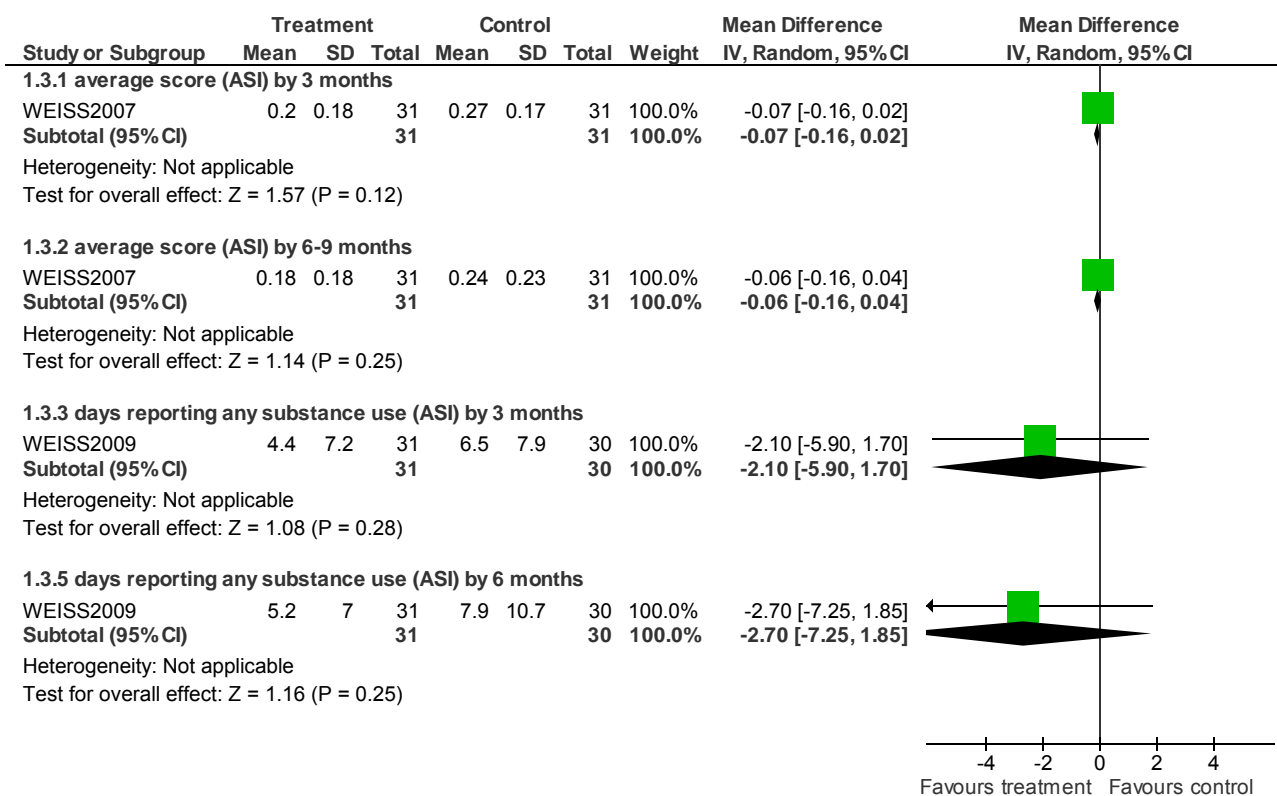


1.2 Substance use: 2. Using substances - by 3 months

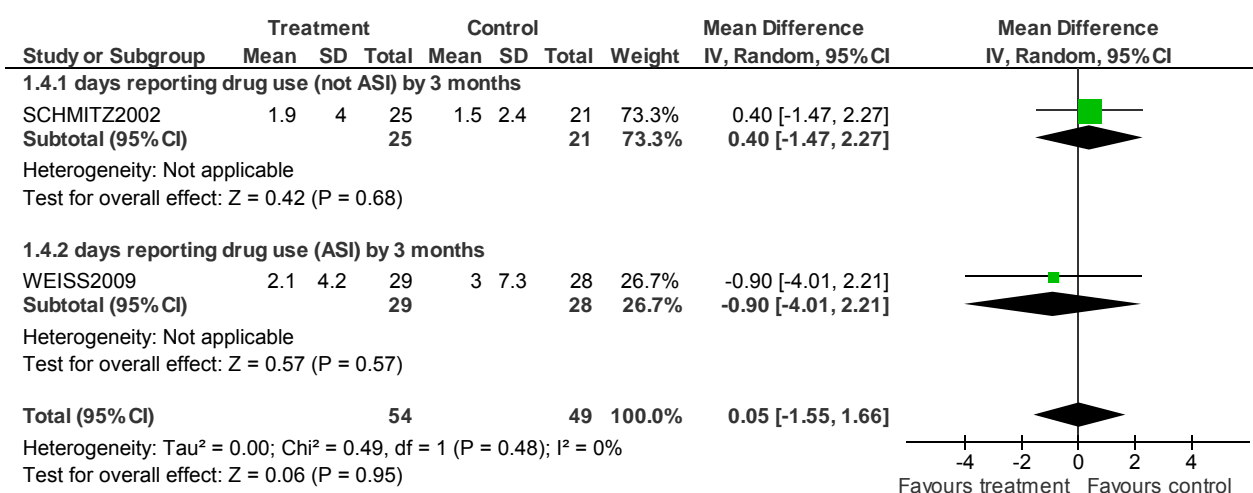


Psychological/psychosocial interventions - Forest plots

1.3 Substance use: 3. Any substance (skewed data)

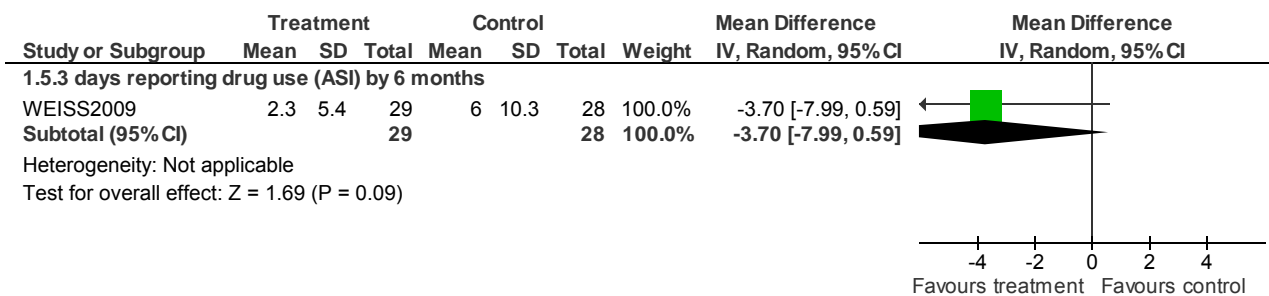


1.4 Substance use: 4. Drugs use - by 3 months (skewed data)

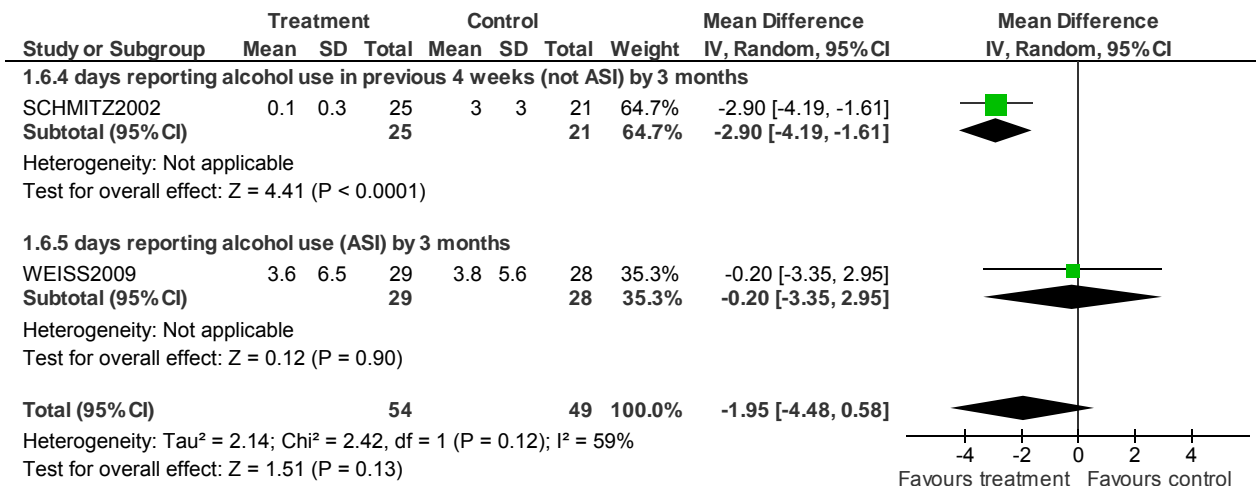


Psychological/psychosocial interventions - Forest plots

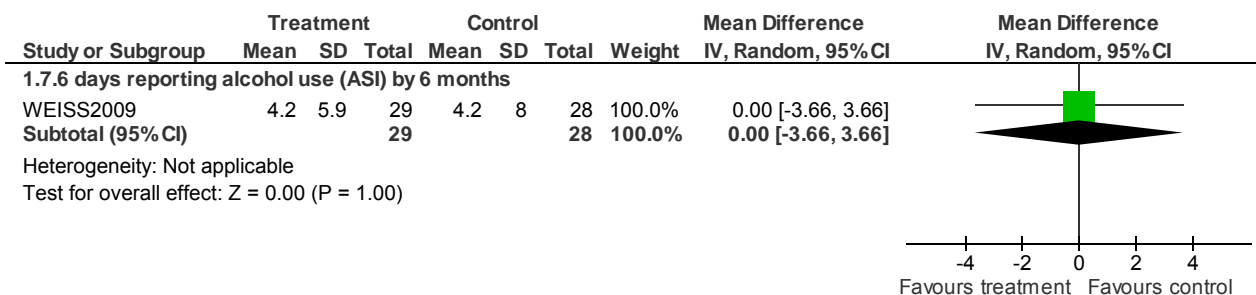
1.5 Substance use: 5. Drugs use - by 6 months (skewed data)



1.6 Substance use: 6. Alcohol use - by 3 months (skewed data)



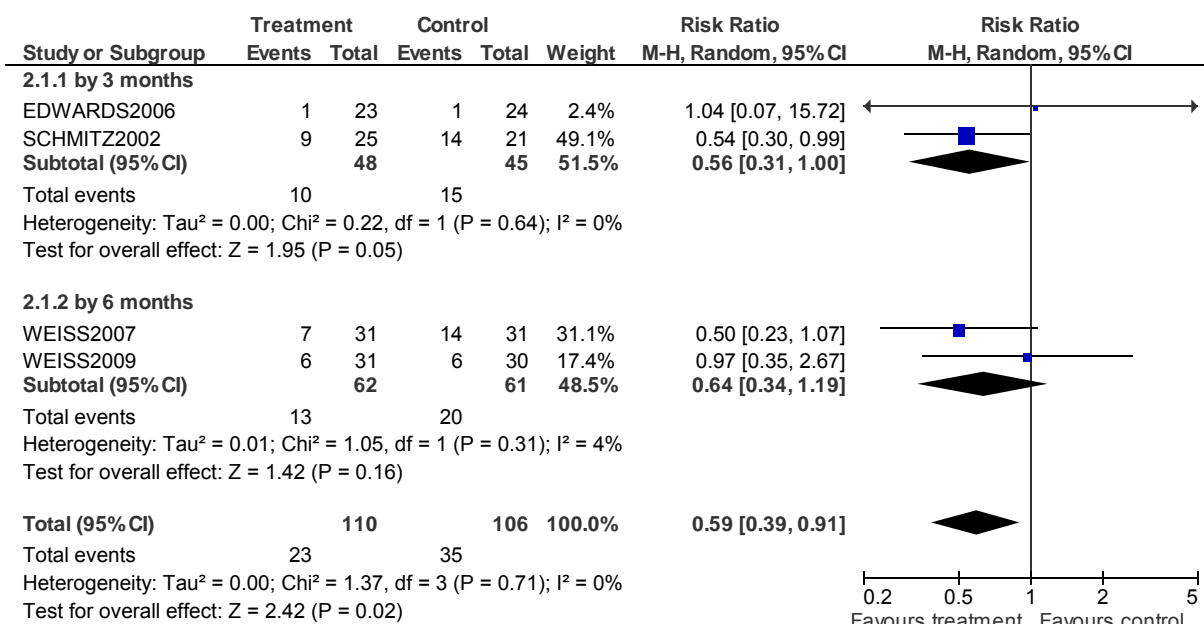
1.7 Substance use: 7. Alcohol use - by 6 months (skewed data)



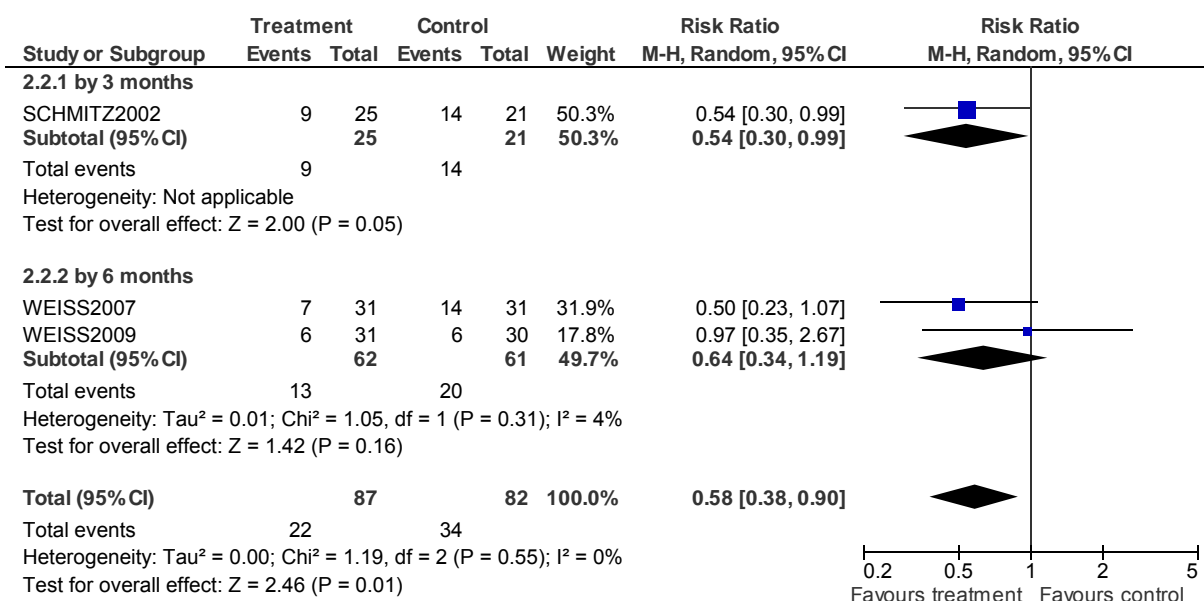
2 CBT versus STANDARD CARE (non-critical outcomes)

Psychological/psychosocial interventions - Forest plots

2.1 Lost to treatment

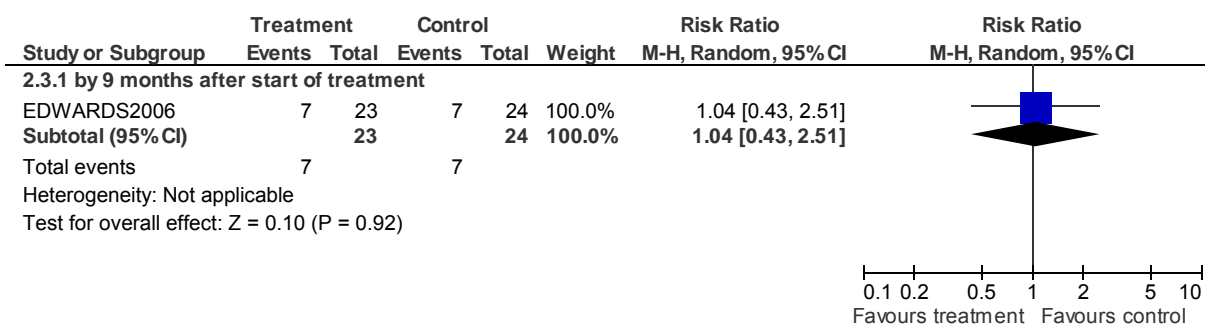


2.2 Lost to treatment - sensitivity analysis (bipolar only)

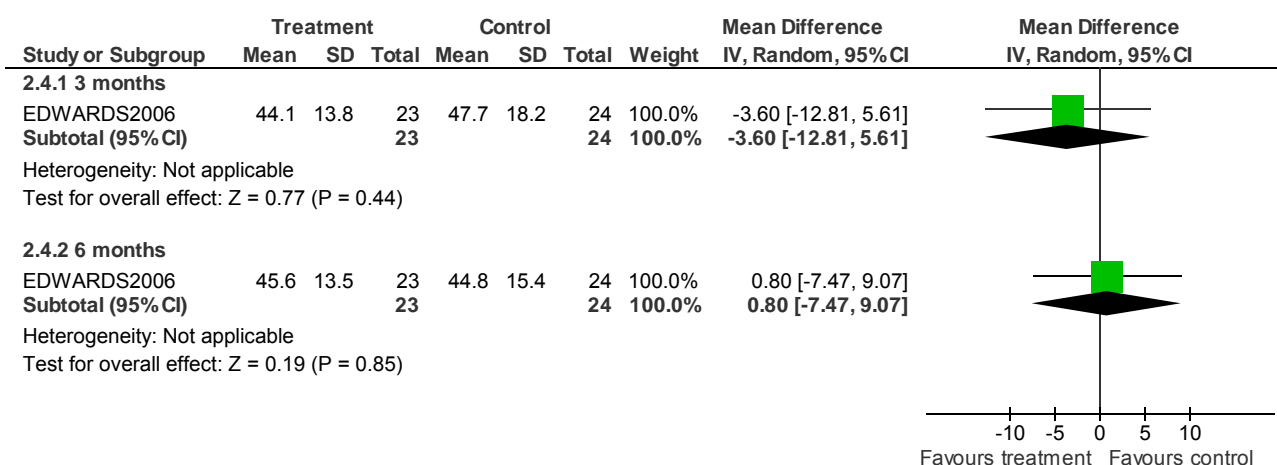


Psychological/psychosocial interventions - Forest plots

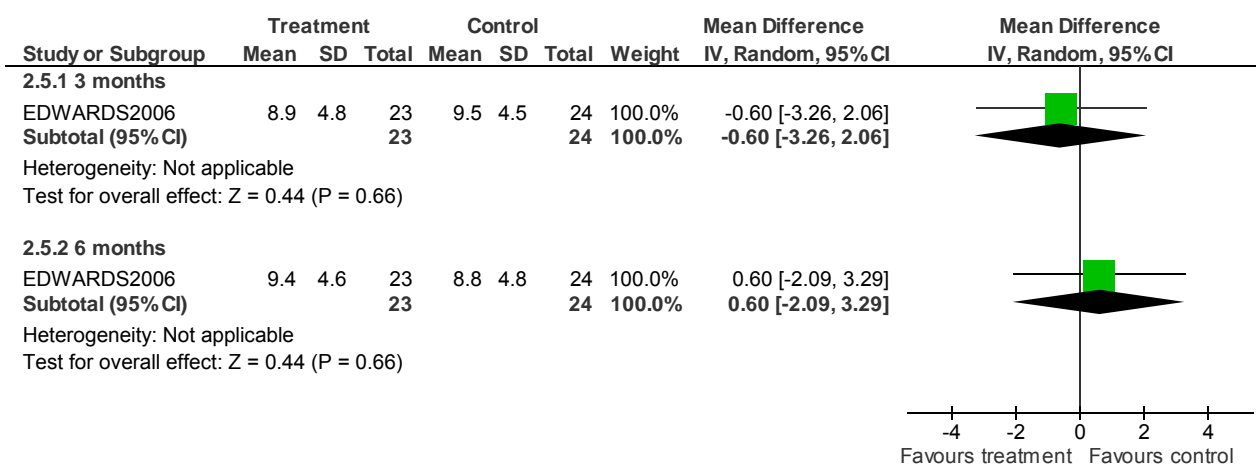
2.3 Lost to evaluation



2.4 Mental state: 1. Total score (BPRS, high = poor)

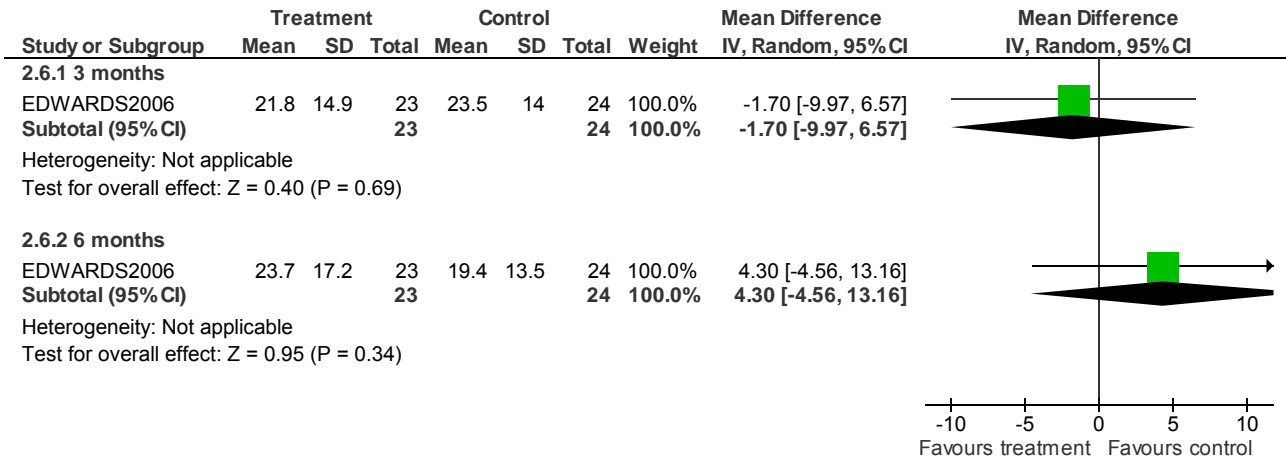


2.5 Mental state: 2. Postive symptoms (BPRS, high = poor) (skewed data)

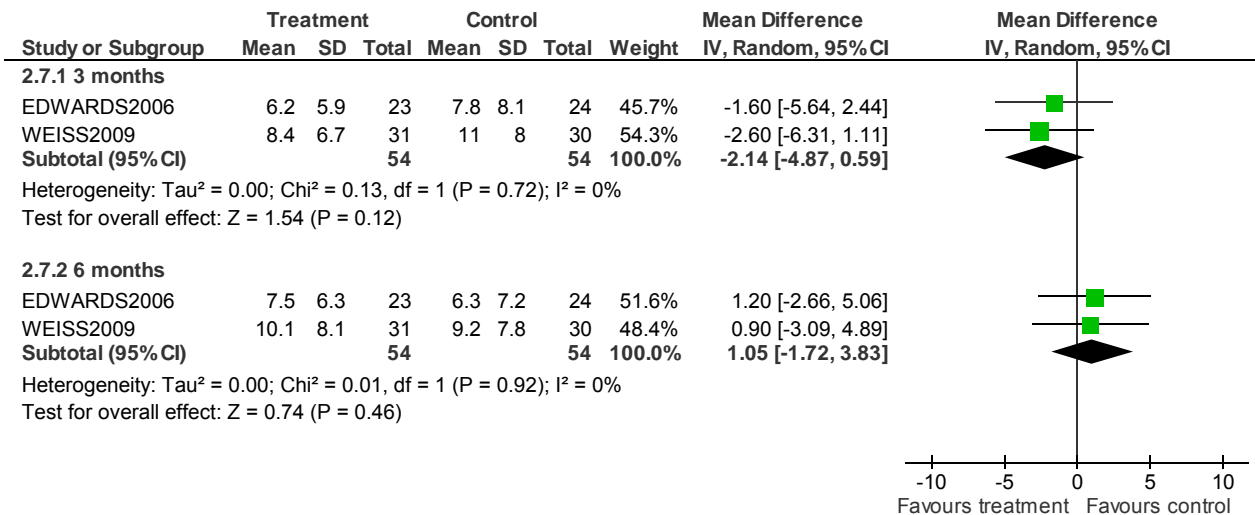


Psychological/psychosocial interventions - Forest plots

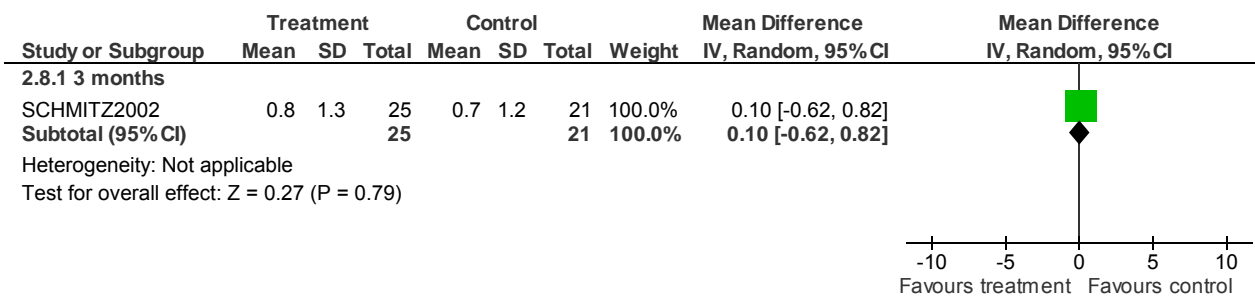
2.6 Mental state: 3. Negative symptoms (SANS, high = poor) (skewed data)



2.7 Mental state: 4. Depressive symptoms (BDI-SF or HDRS, high = poor) (skewed data)

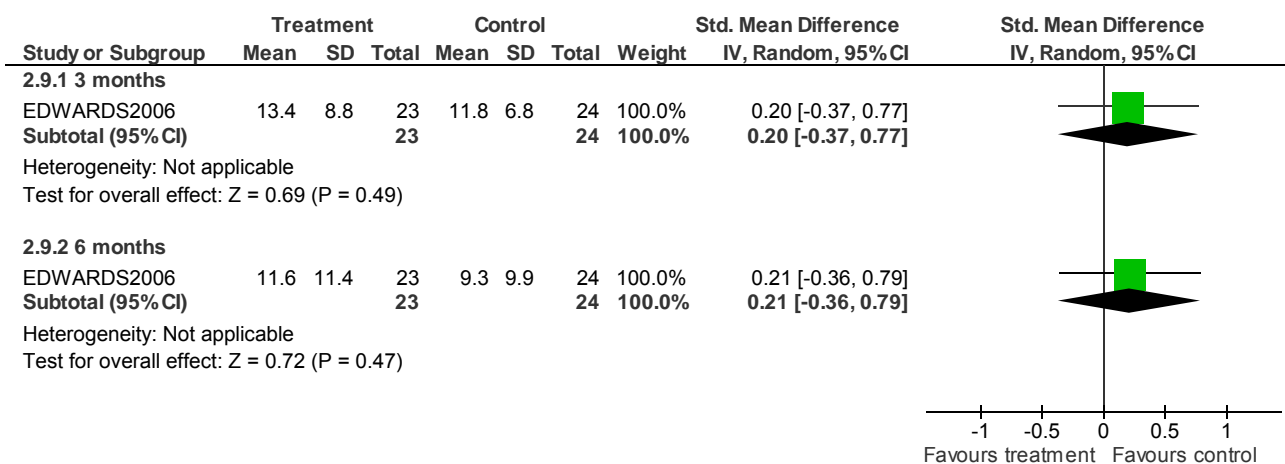


2.8 Mental state: 5. Depressive symptoms (Days reporting symptoms, high = poor) (skewed data)

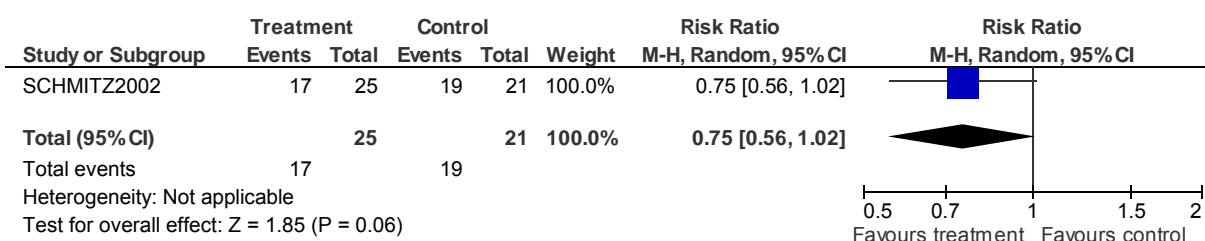


Psychological/psychosocial interventions - Forest plots

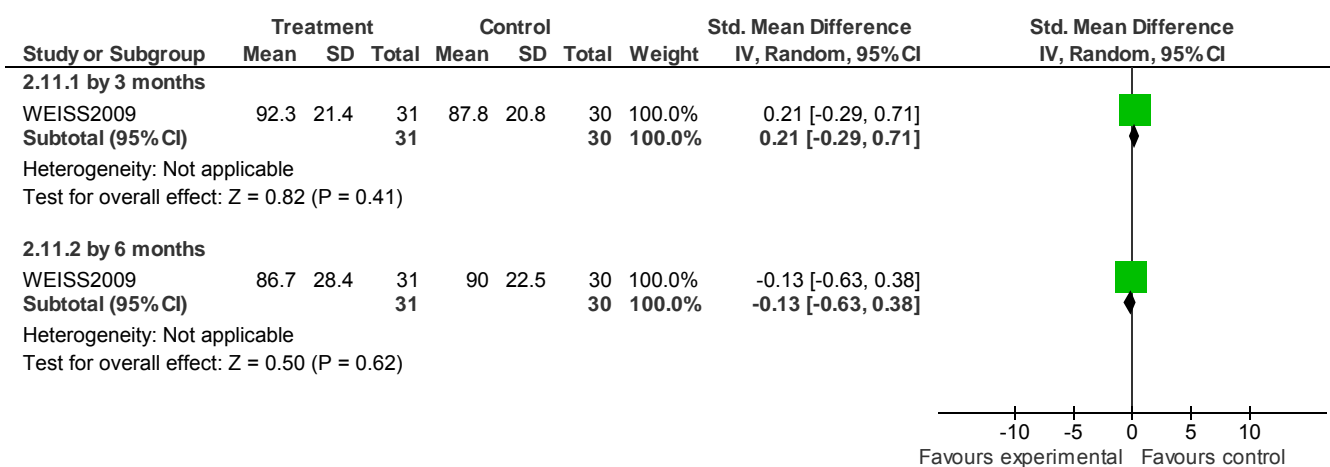
2.9 Service use: 1. Outpatient attendance & medication (SURS, skewed data)



2.10 Adherence: 1. Not adherent with medication - by 3 months

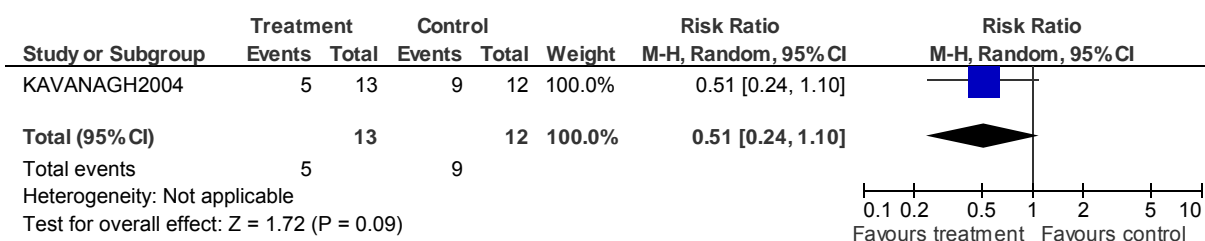


2.11 Adherence: 2. Medication adherence rate



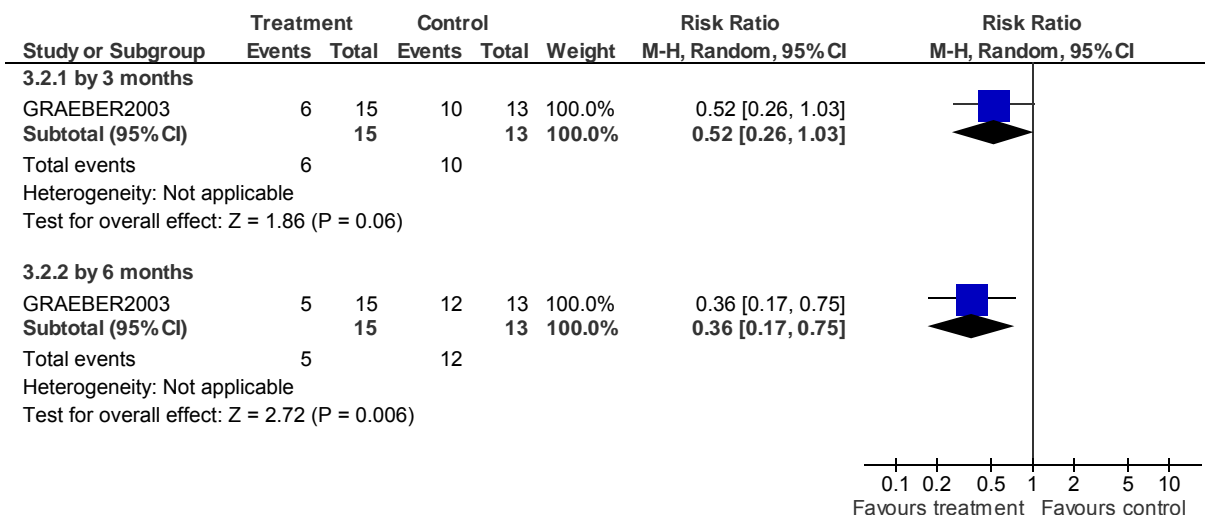
3 MOTIVATIONAL INTERVIEWING versus STANDARD CARE (critical outcomes)

3.1 Substance use: 1. Not abstinent or not improved on all substances - by 12 months

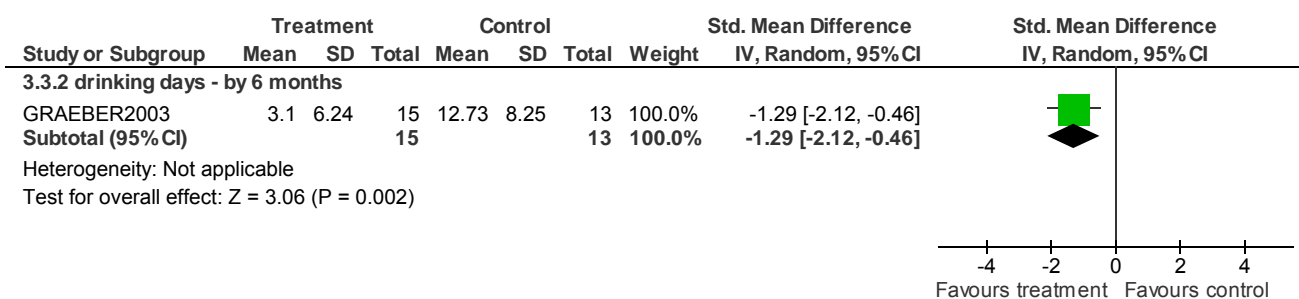


Psychological/psychosocial interventions - Forest plots

3.2 Substance use: 2. Not abstaining from alcohol



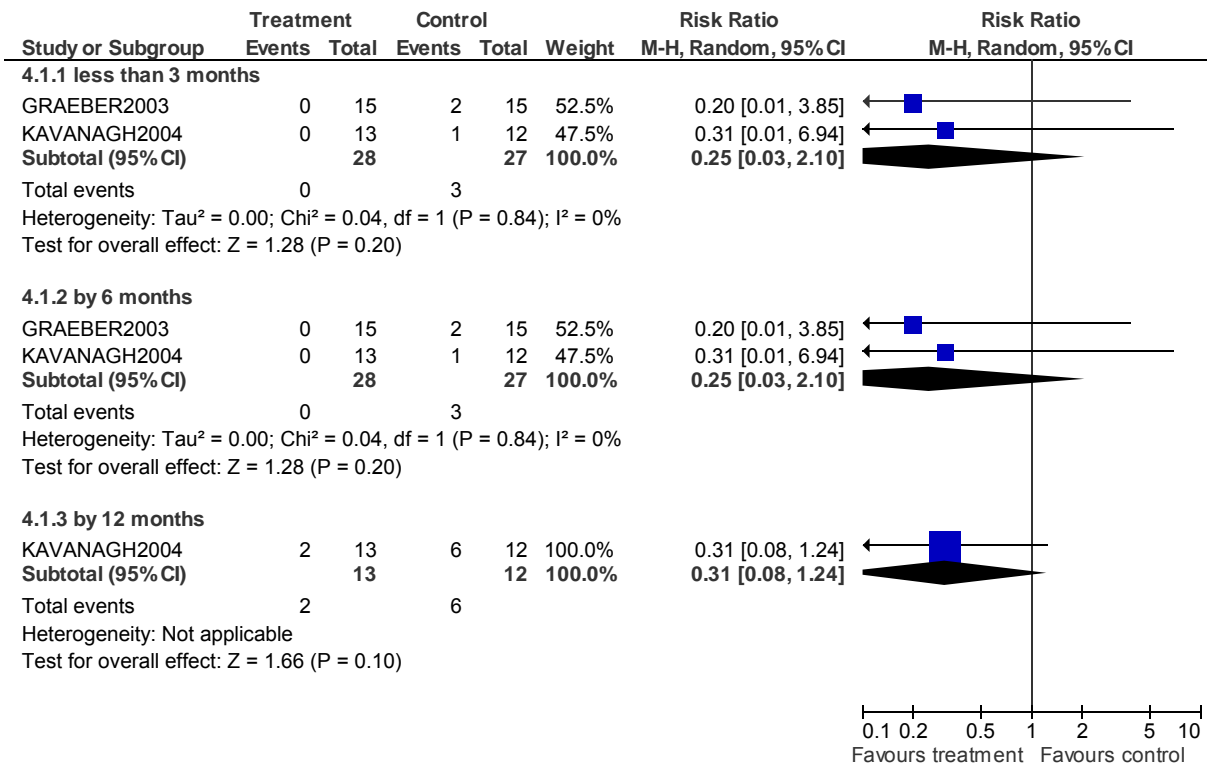
3.3 Substance use: 3. Other measures of alcohol use (skewed data)



4 MOTIVATIONAL INTERVIEWING versus STANDARD CARE (non-critical outcomes)

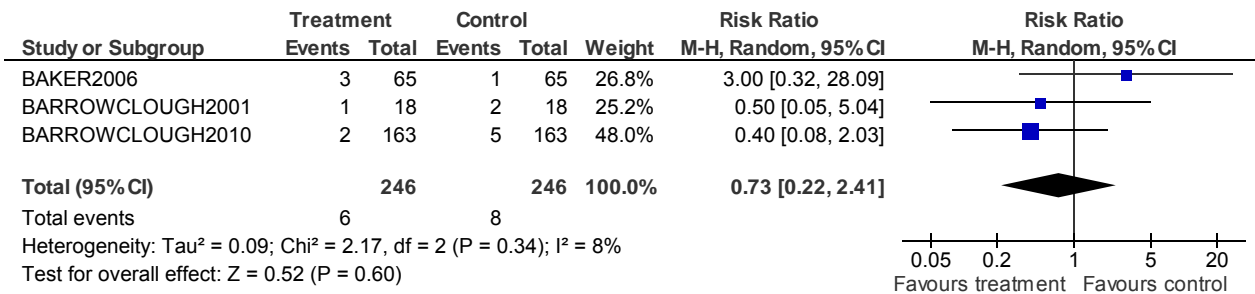
Psychological/psychosocial interventions - Forest plots

4.1 Lost to evaluation



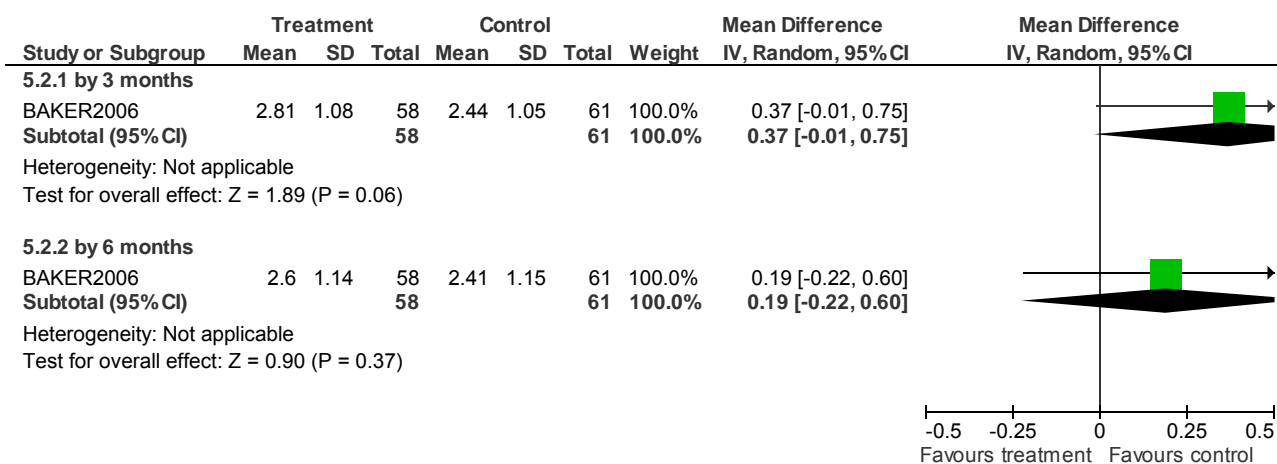
5 CBT + MOTIVATIONAL INTERVIEWING versus STANDARD CARE (critical outcomes)

5.1 Death - by about 1 year

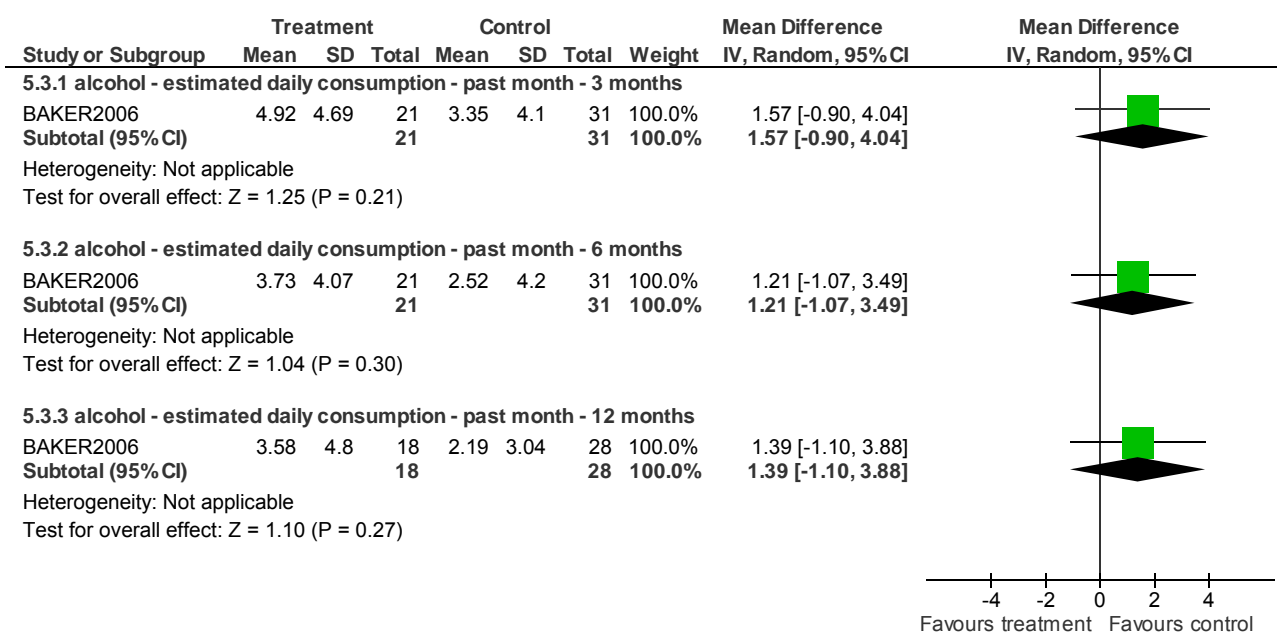


Psychological/psychosocial interventions - Forest plots

5.2 Substance use: 1. Average number of different drugs used during the past month (OTI, high = poor)

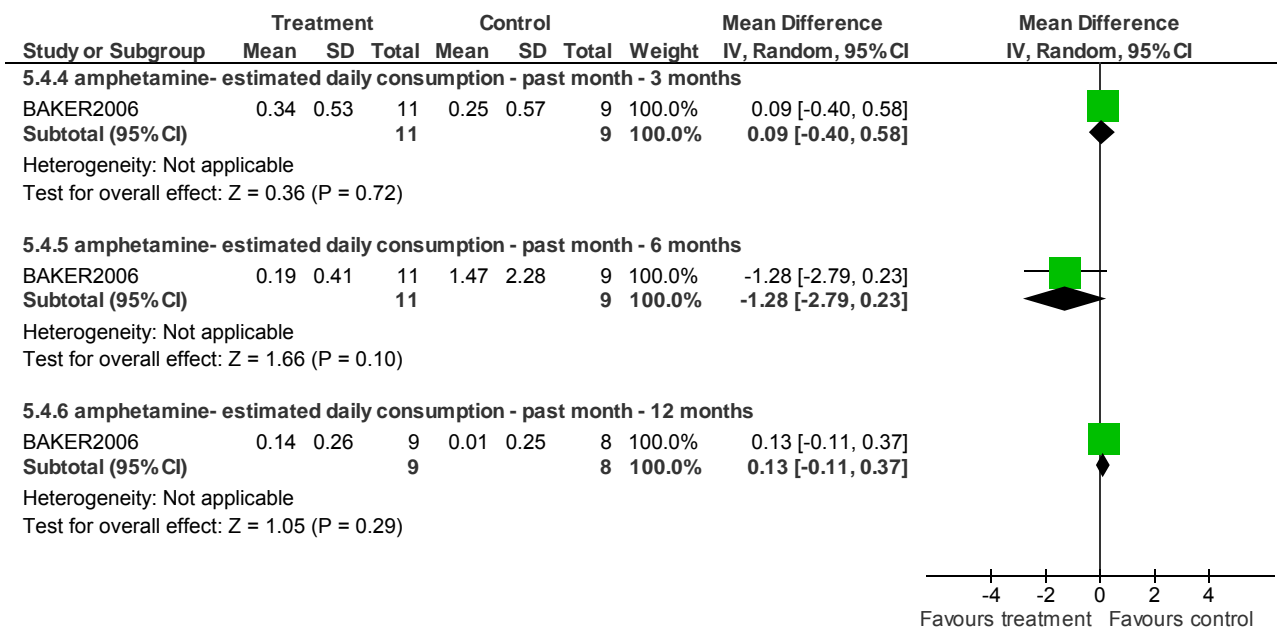


5.3 Substance use: 2. Average score - alcohol (skewed data)

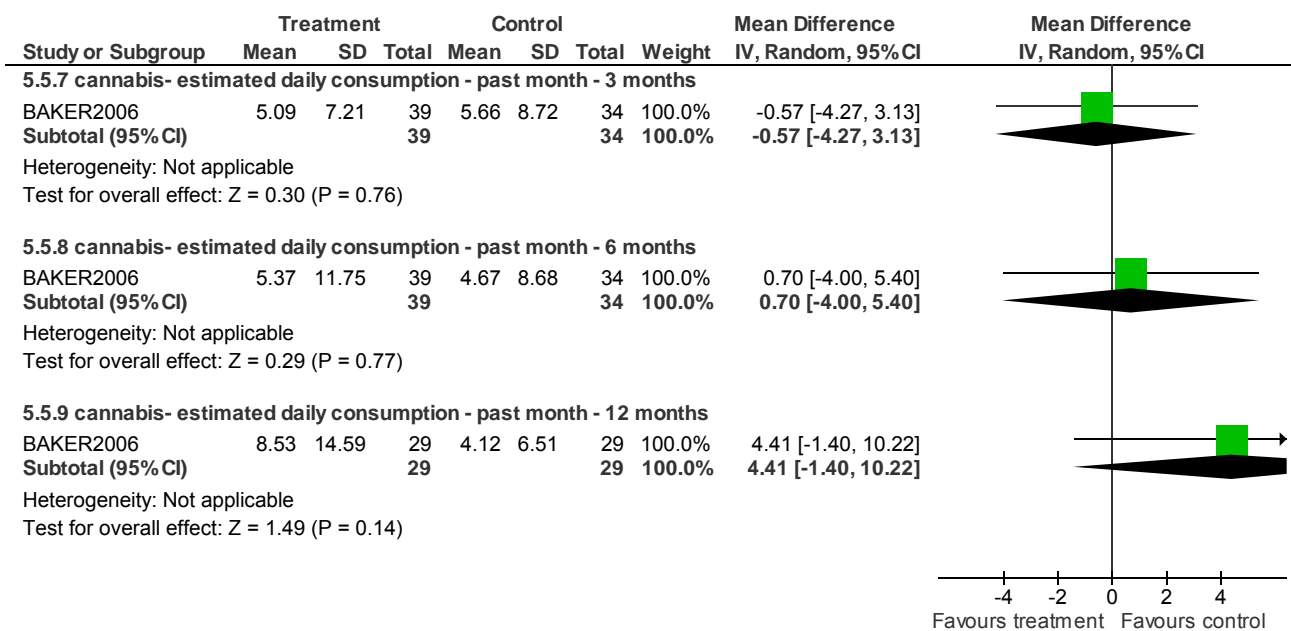


Psychological/psychosocial interventions - Forest plots

5.4 Substance use: 3. Average score - amphetamine (skewed data)



5.5 Substance use: 4. Average score - cannabis (skewed data)

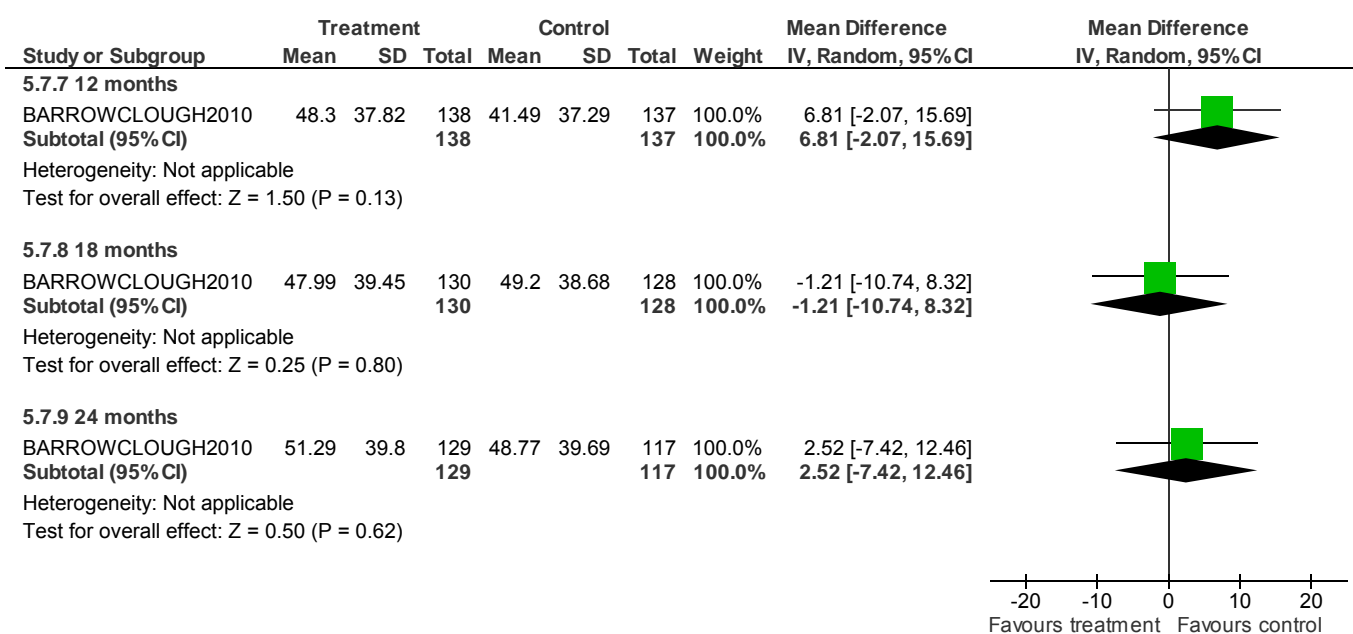


Psychological/psychosocial interventions - Forest plots

5.6 Substance use: 6. Average change in % days abstinent during & after treatment

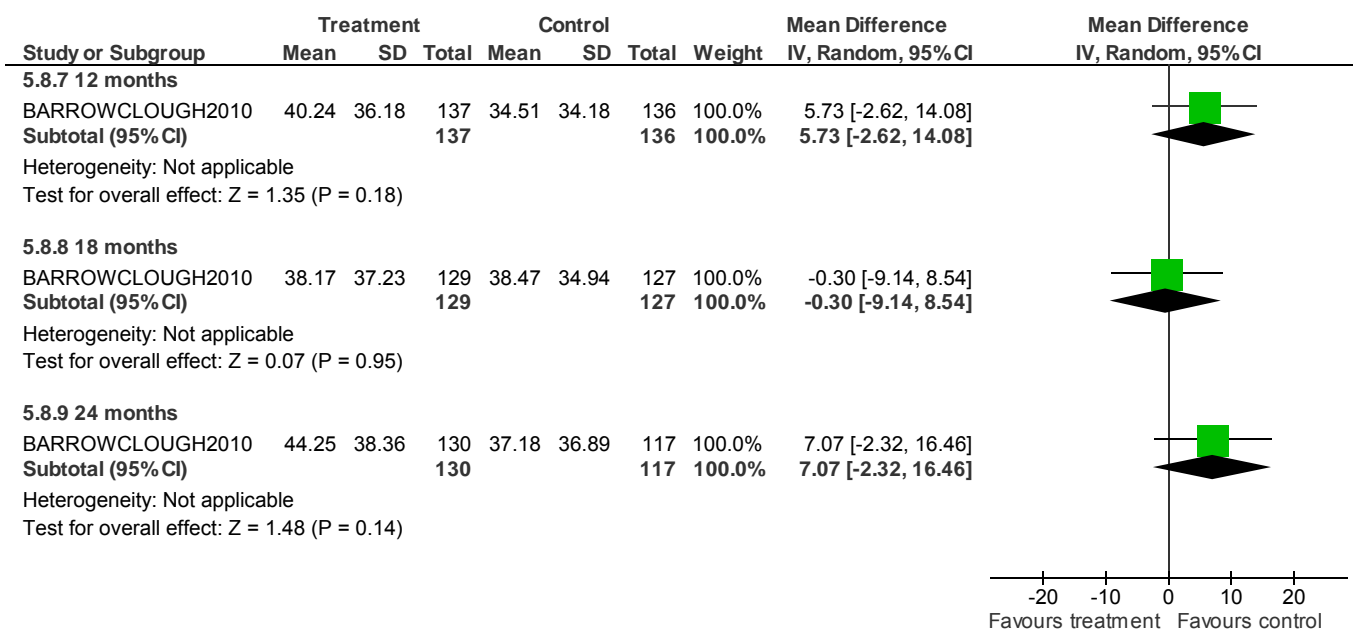
Study ID	Treatment Group	Median	range	N	Notes
BARROWCLOUGH 2001	CBT + MI	19.99	-25.6 to 83.4	17	U=86.5 p<0.03 Non-parametric analysis. Data summed over 4 time periods (to 12 months) and subtracted from baseline.
	TAU	-6.52	-67.9-53.2	15	

5.7 Substance use: 7. TLFB: %days abstinent main substance (skewed data)

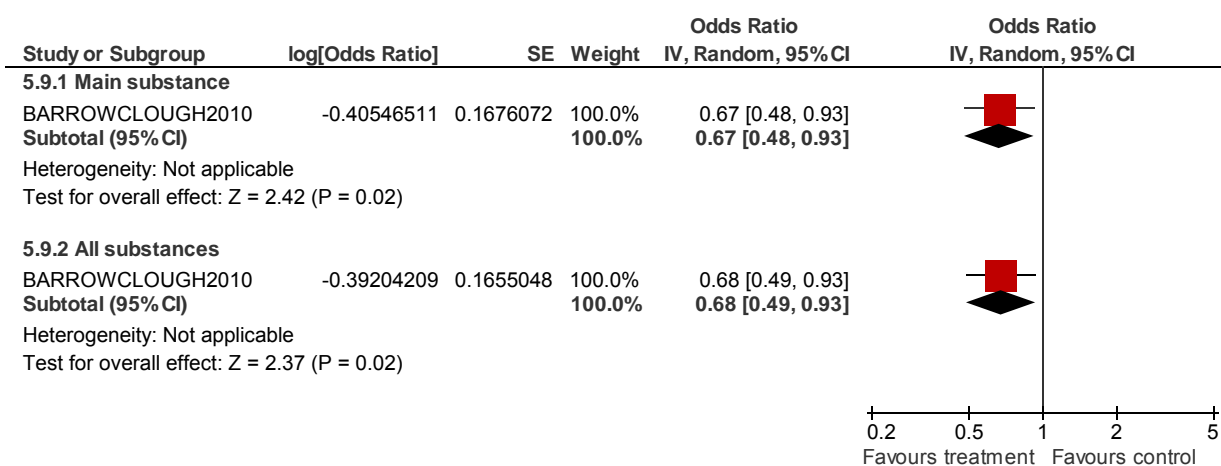


Psychological/psychosocial interventions - Forest plots

5.8 Substance use: 8. TLFB: %days abstinent all substance (skewed data)

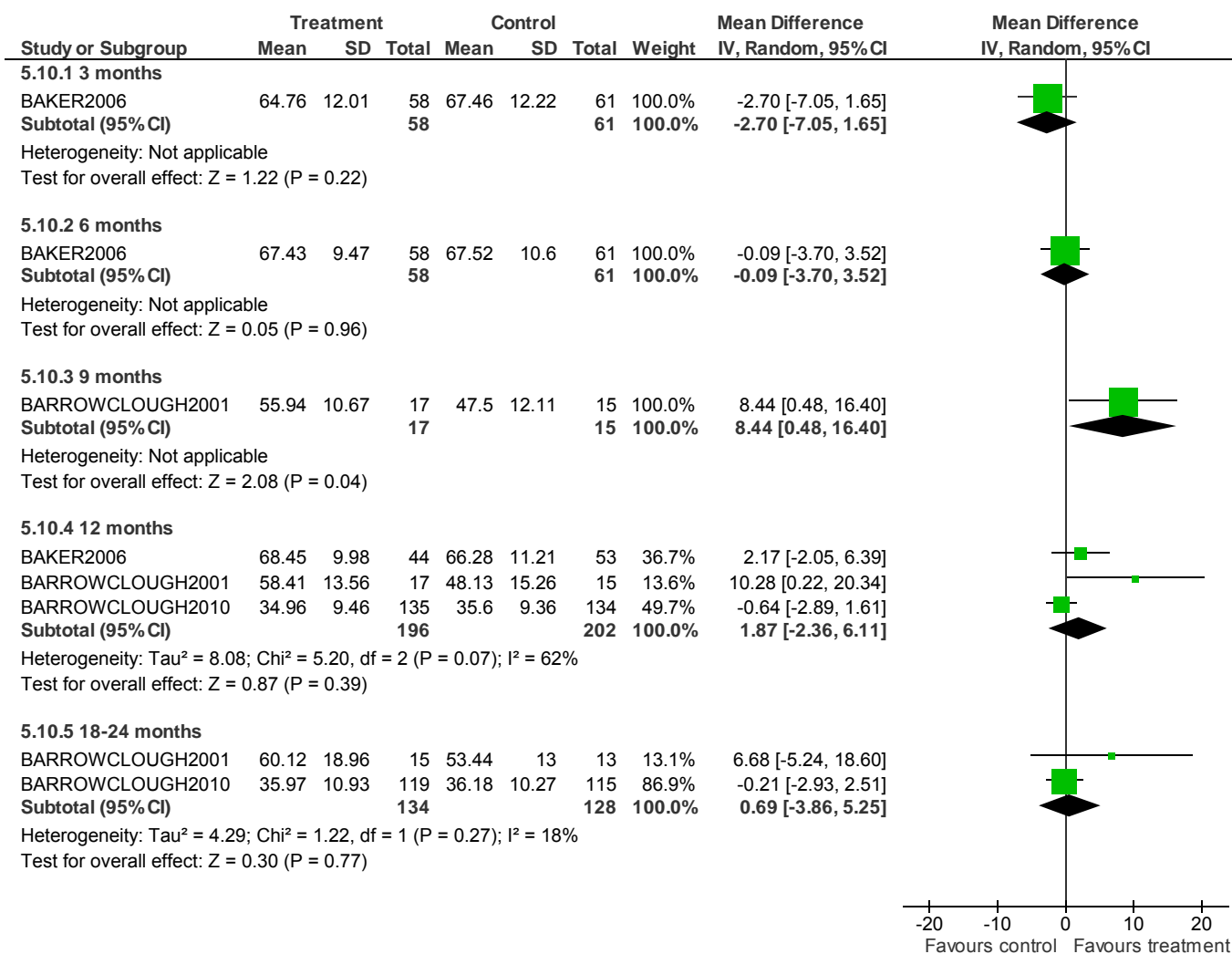


5.9 Substance use: 9. Substance use per substance-using day

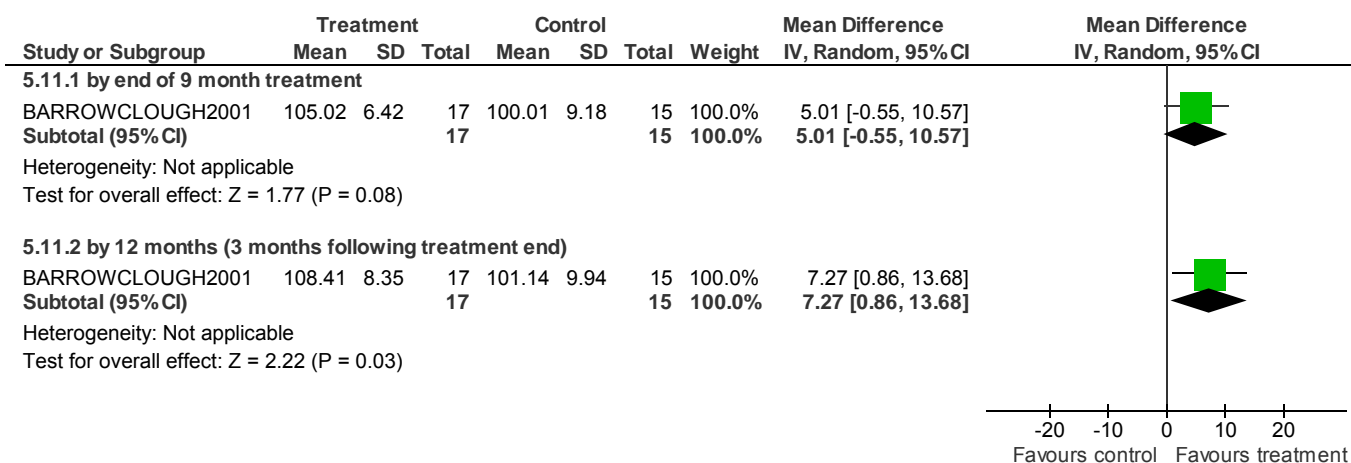


Psychological/psychosocial interventions - Forest plots

5.10 Functioning: 1. Average global functioning score (GAF, low = poor)



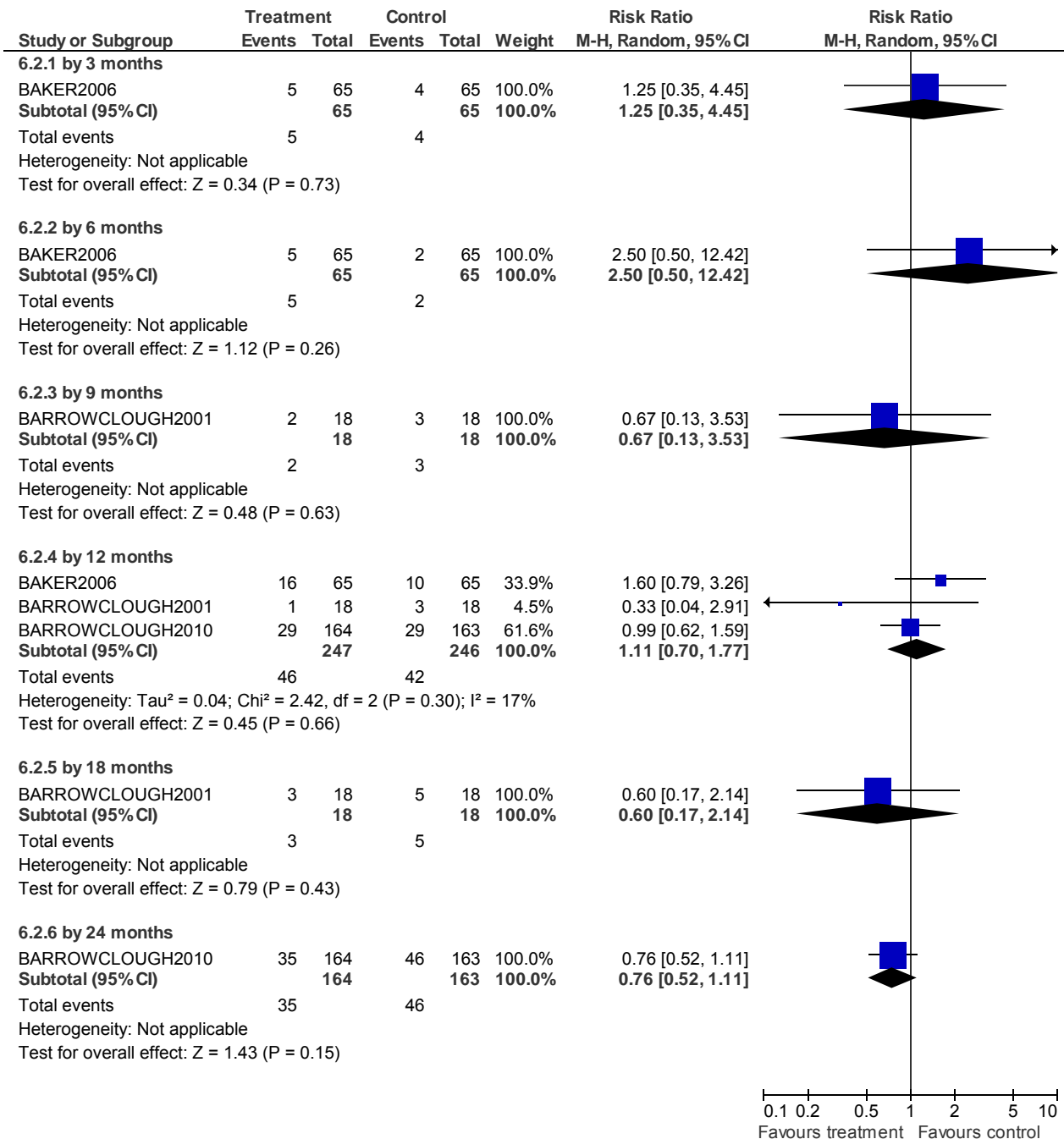
5.11 Functioning: 2. Average social functioning score (SFS, low = poor)



6 CBT + MOTIVATIONAL INTERVIEWING versus STANDARD CARE (non-critical outcomes)

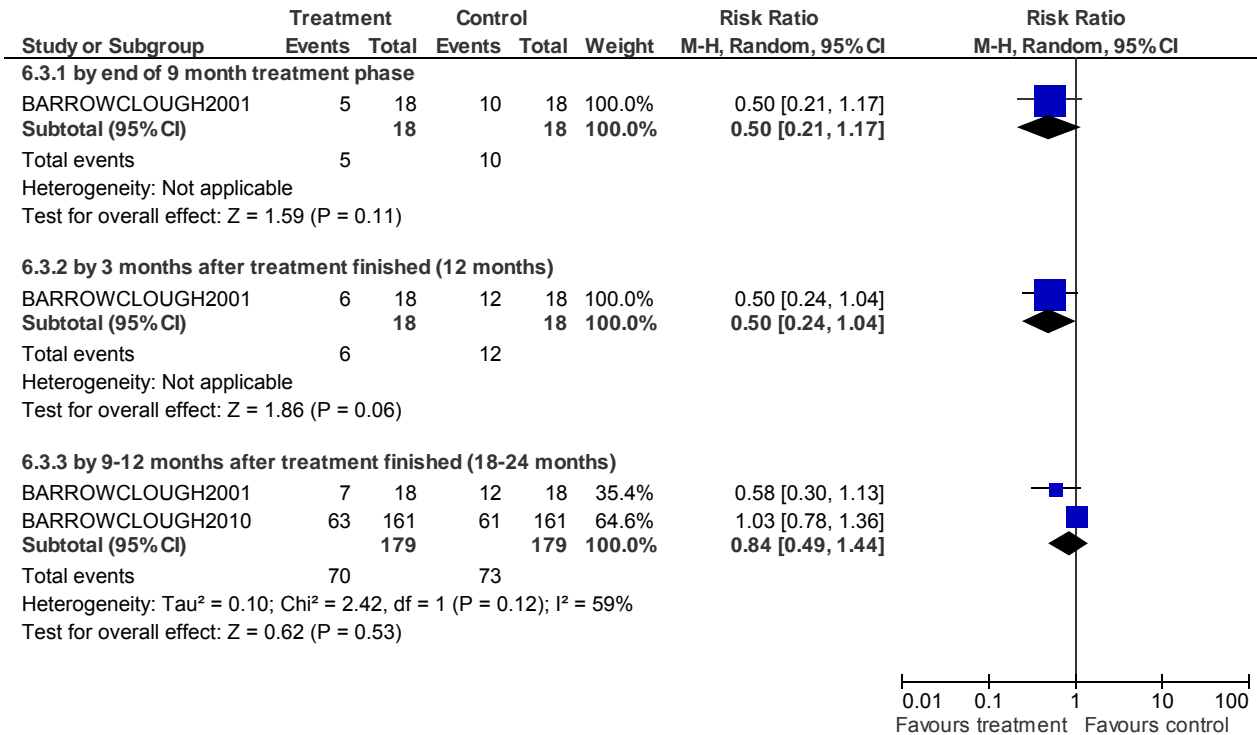
Psychological/psychosocial interventions - Forest plots

6.2 Lost to evaluation

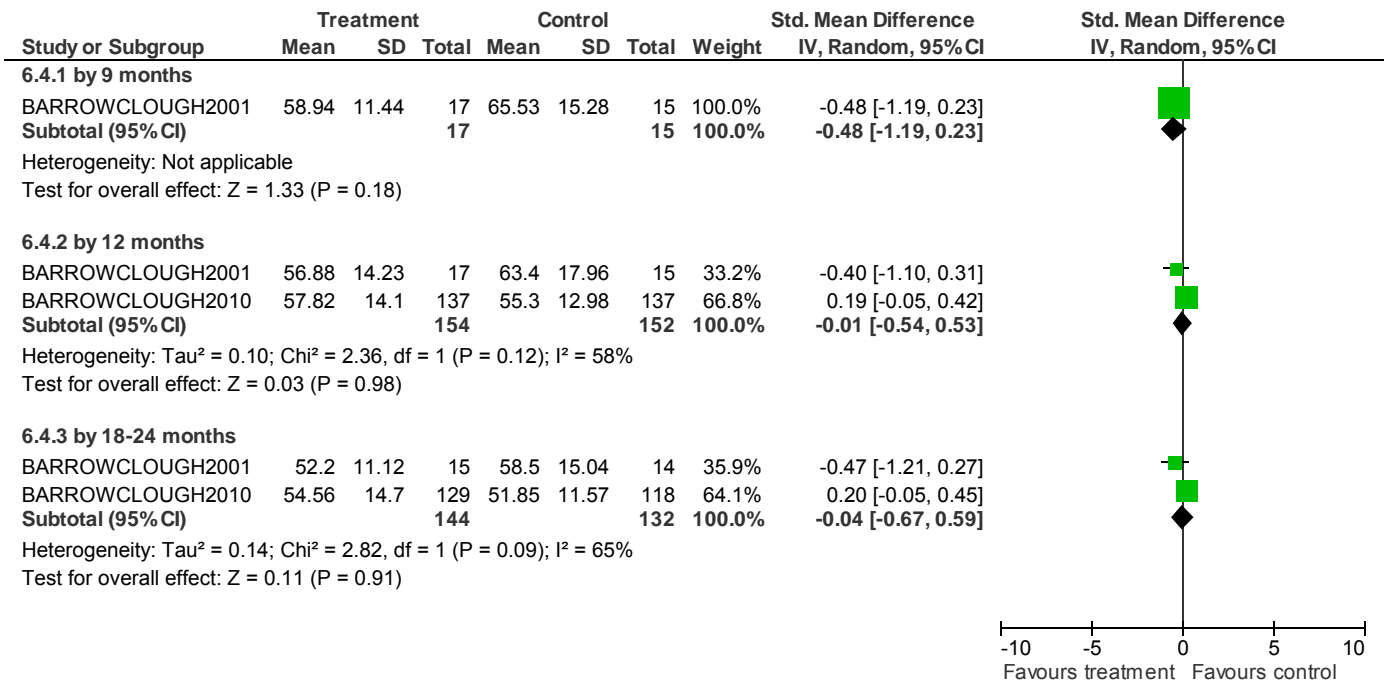


Psychological/psychosocial interventions - Forest plots

6.3 Mental state: 1. Relapse

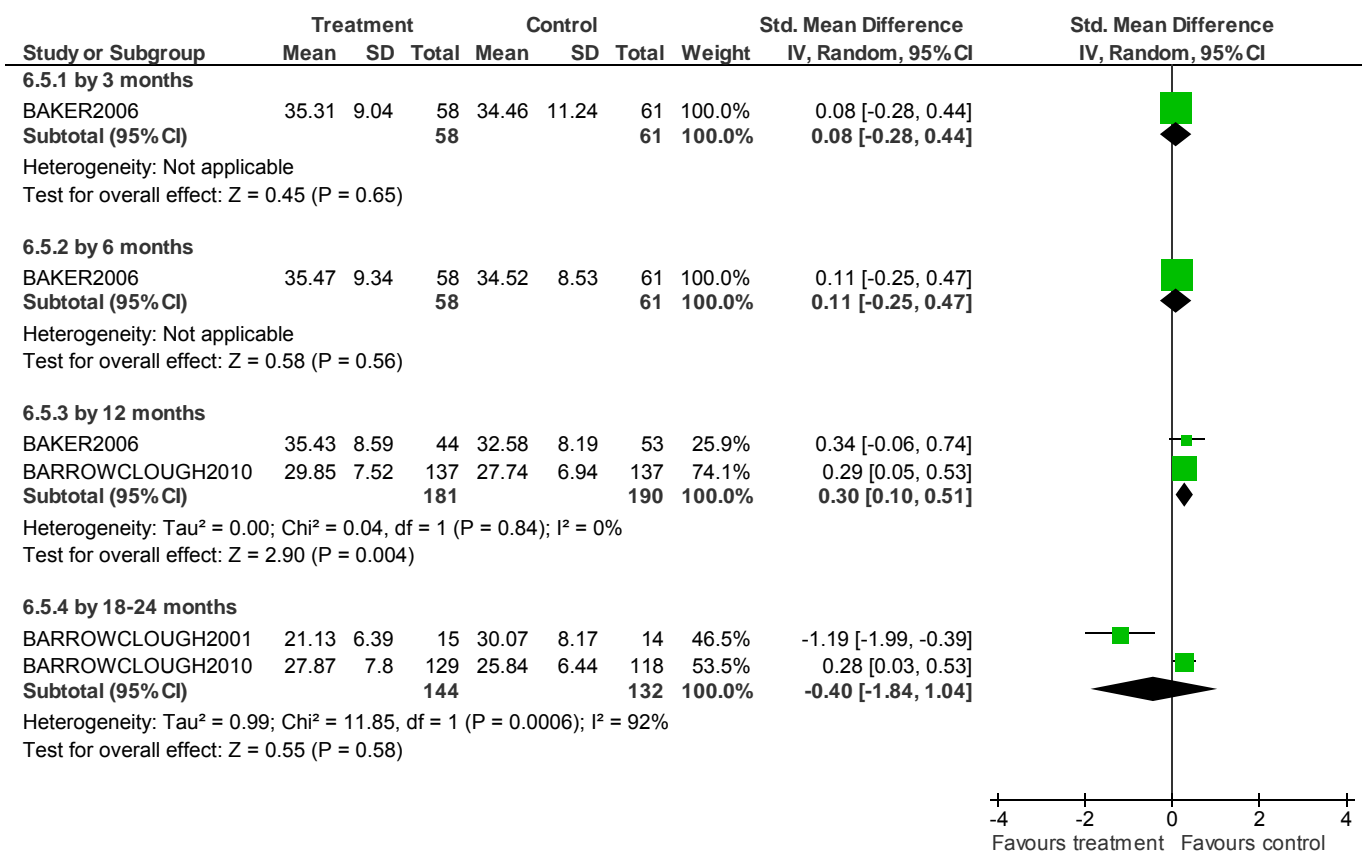


6.4 Mental state: 2. Total score (PANSS, high = poor)



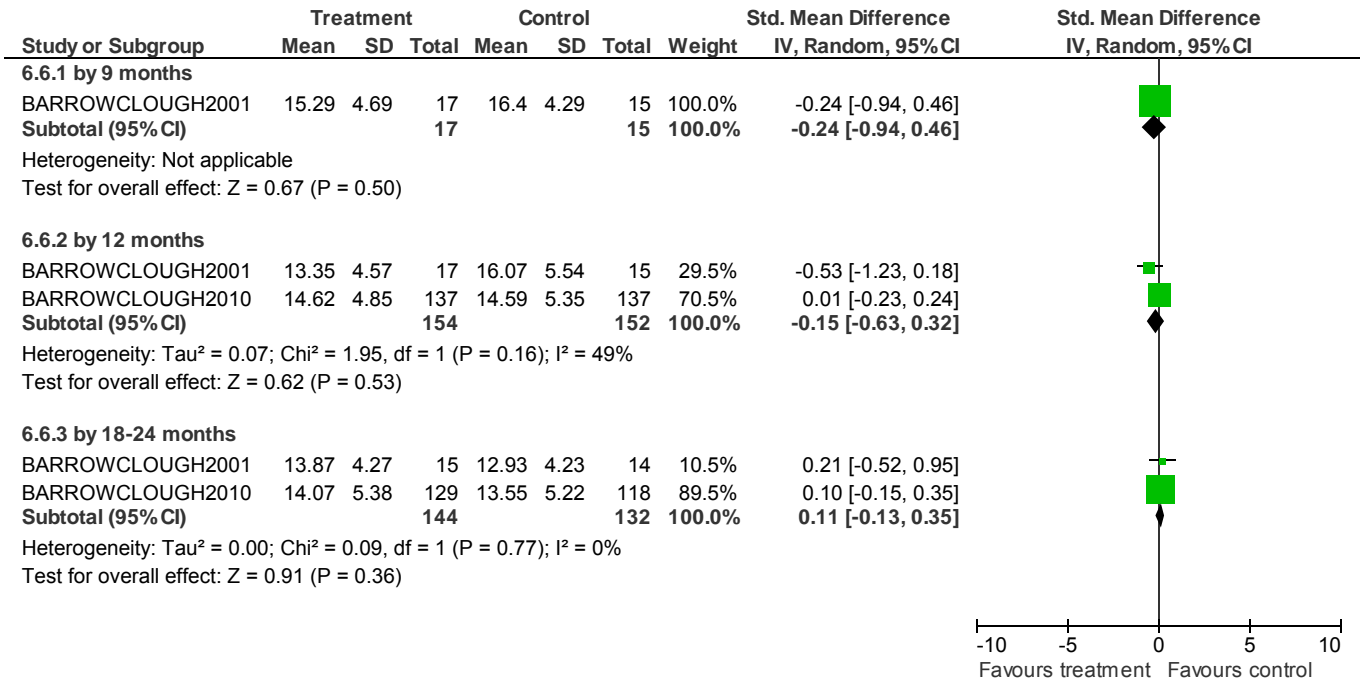
Psychological/psychosocial interventions - Forest plots

6.5 Mental state: 3. General symptoms (BPRS/PANSS, high = poor)



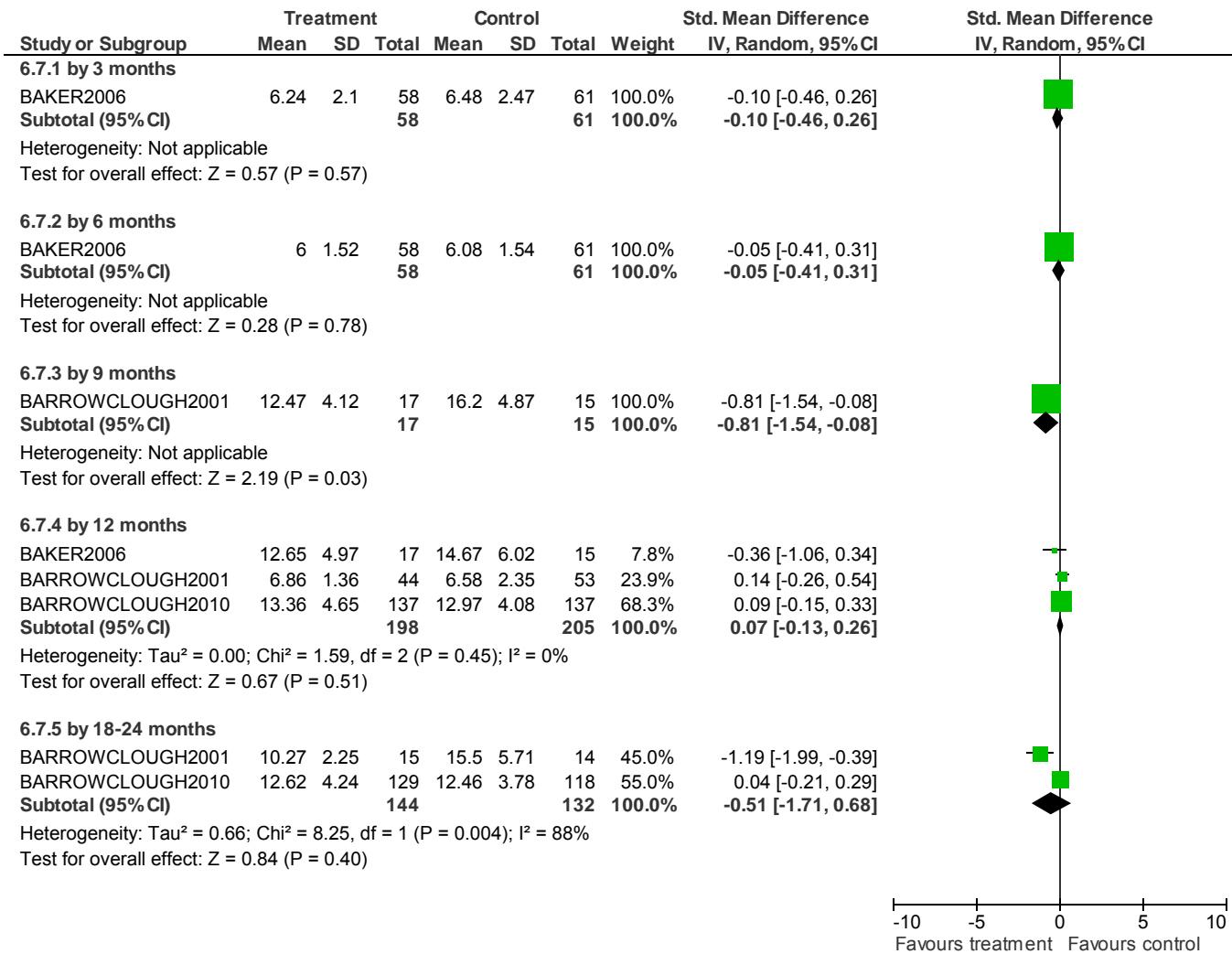
Psychological/psychosocial interventions - Forest plots

6.6 Mental state: 4. Positive symptoms (PANSS, high = poor)



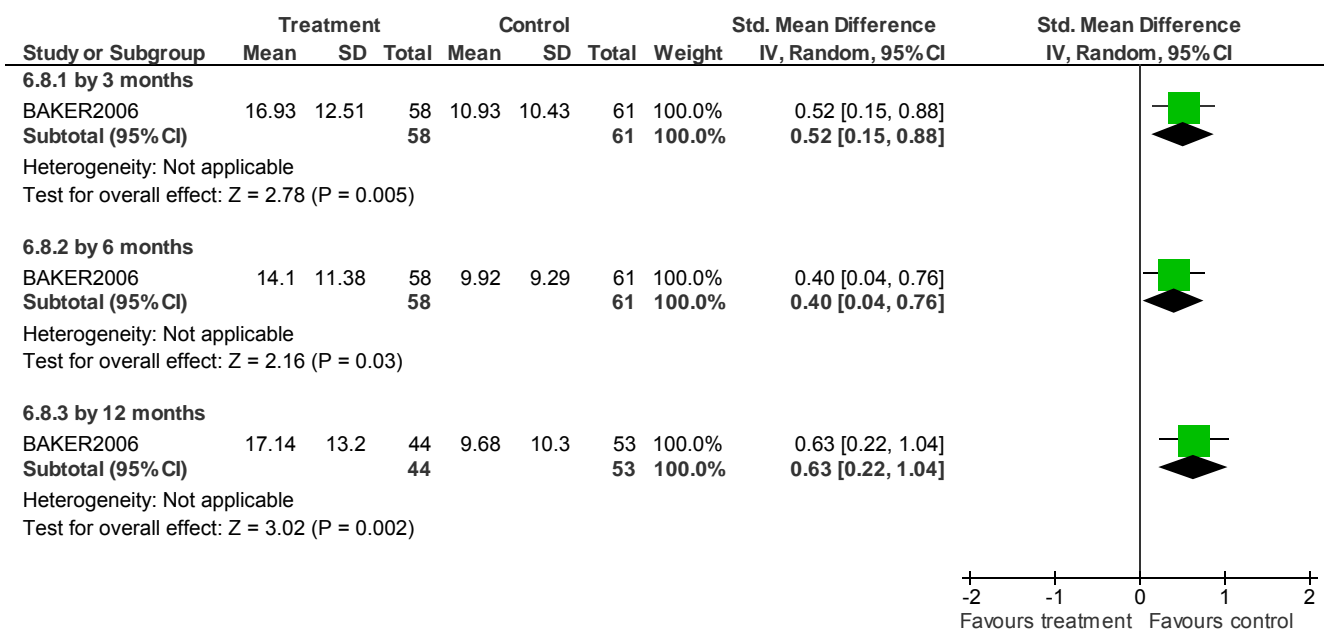
Psychological/psychosocial interventions - Forest plots

6.7 Mental state: 5. Negative symptoms (PANSS/BPRS, high = poor)

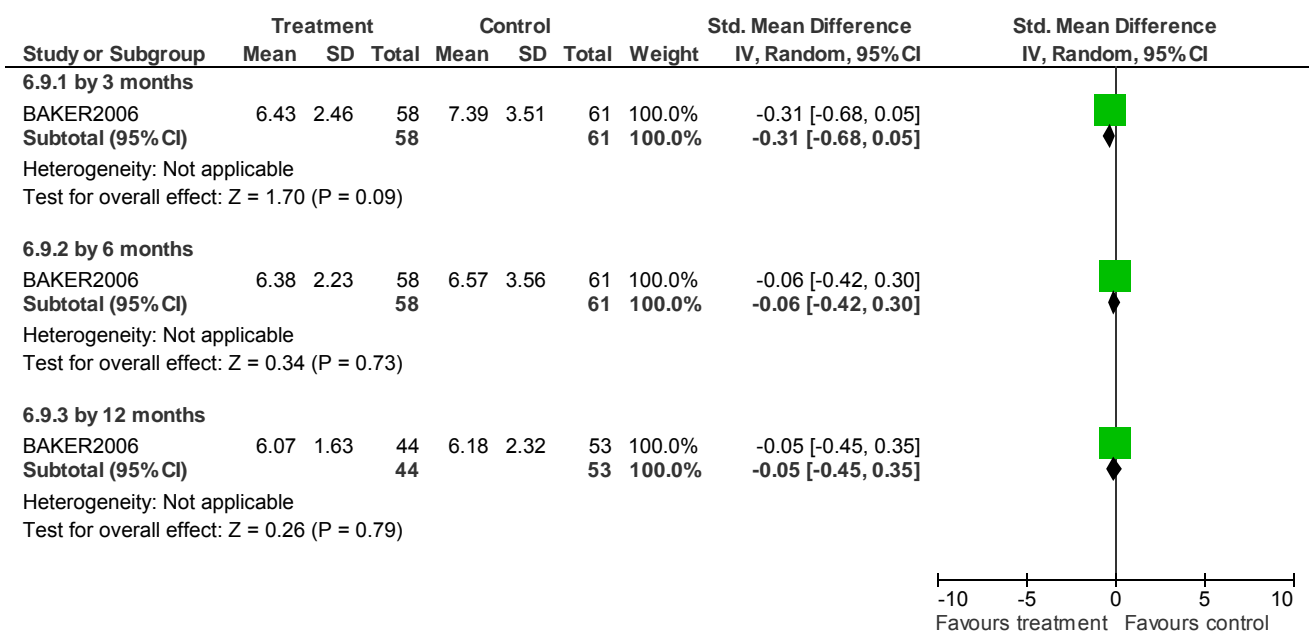


Psychological/psychosocial interventions - Forest plots

6.8 Mental state: 6. Depressive symptoms (BDI-11, high = poor)

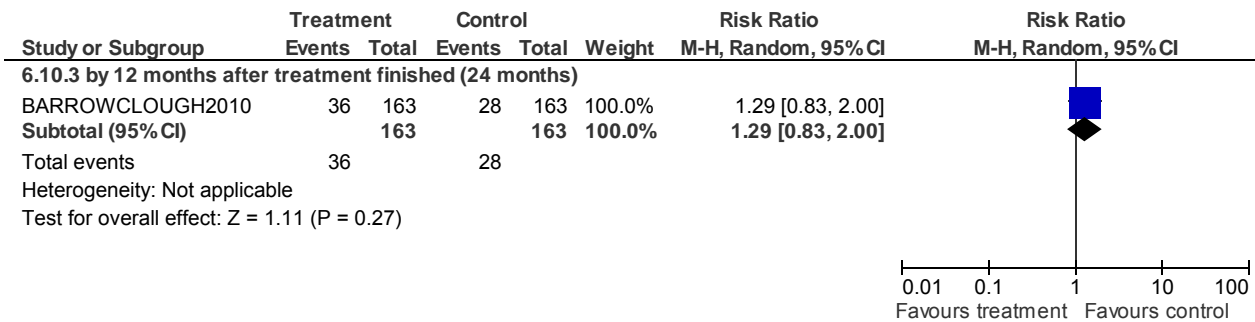


6.9 Mental state: 7. Manic symptoms (BPRS, high = poor)



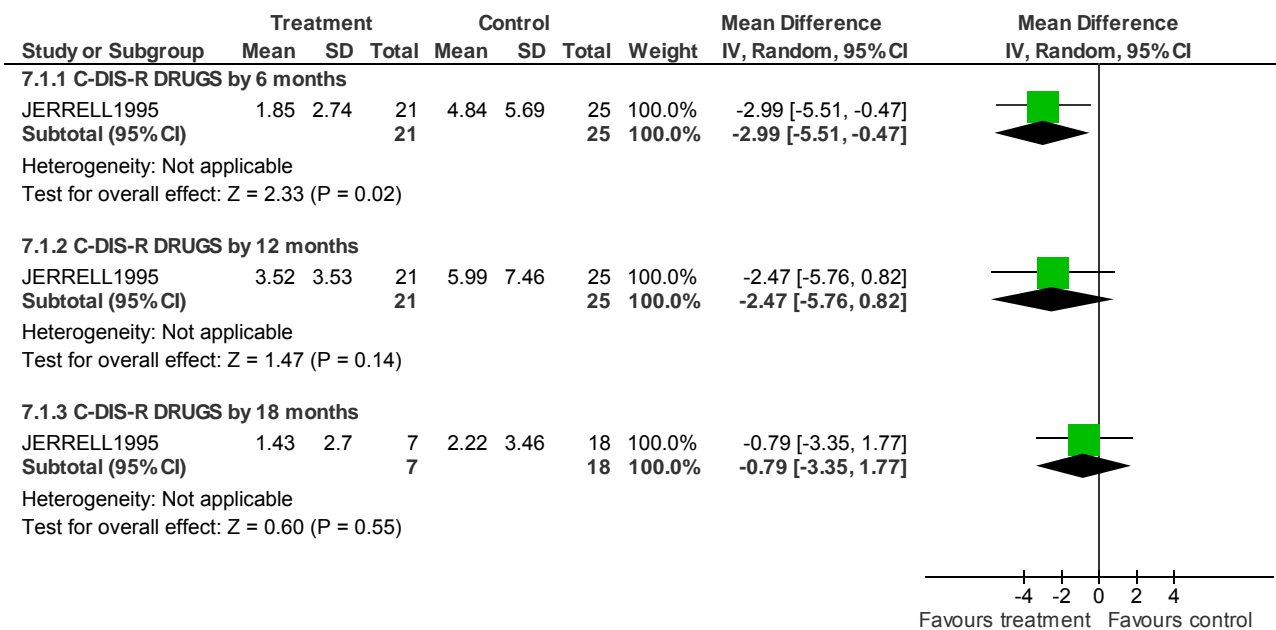
Psychological/psychosocial interventions - Forest plots

6.10 Mental state: 8. Number admitted to hospital in FU (including those in hospital at the point of FU)



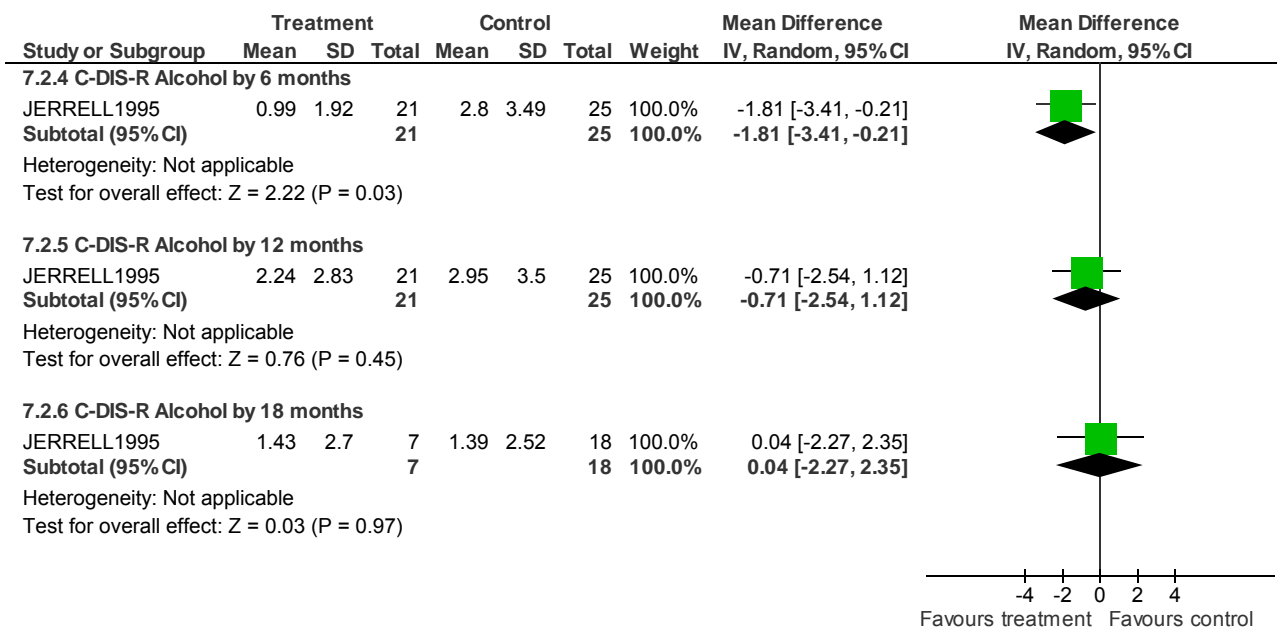
7 GROUP PSYCHOTHERAPY versus STANDARD CARE (critical outcomes)

7.1 Substance use: 1. Average score - C-DIS-R Drugs (skewed data)

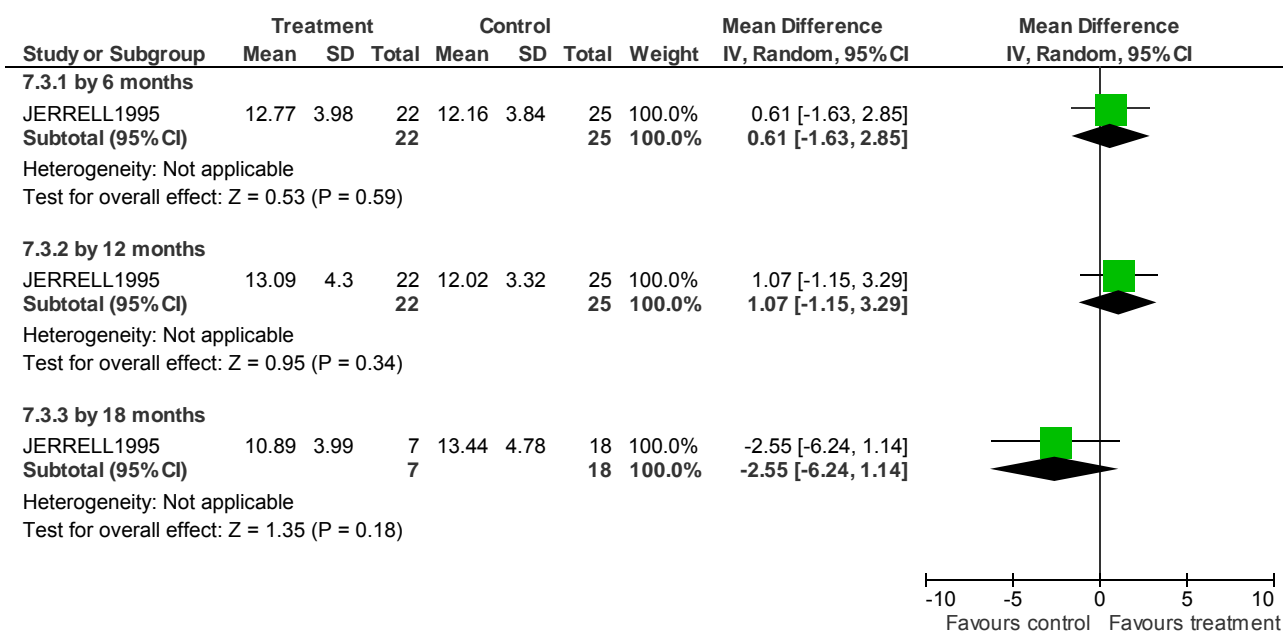


Psychological/psychosocial interventions - Forest plots

7.2 Substance use: 2. Average score - C-DIS-R Alcohol (skewed data)

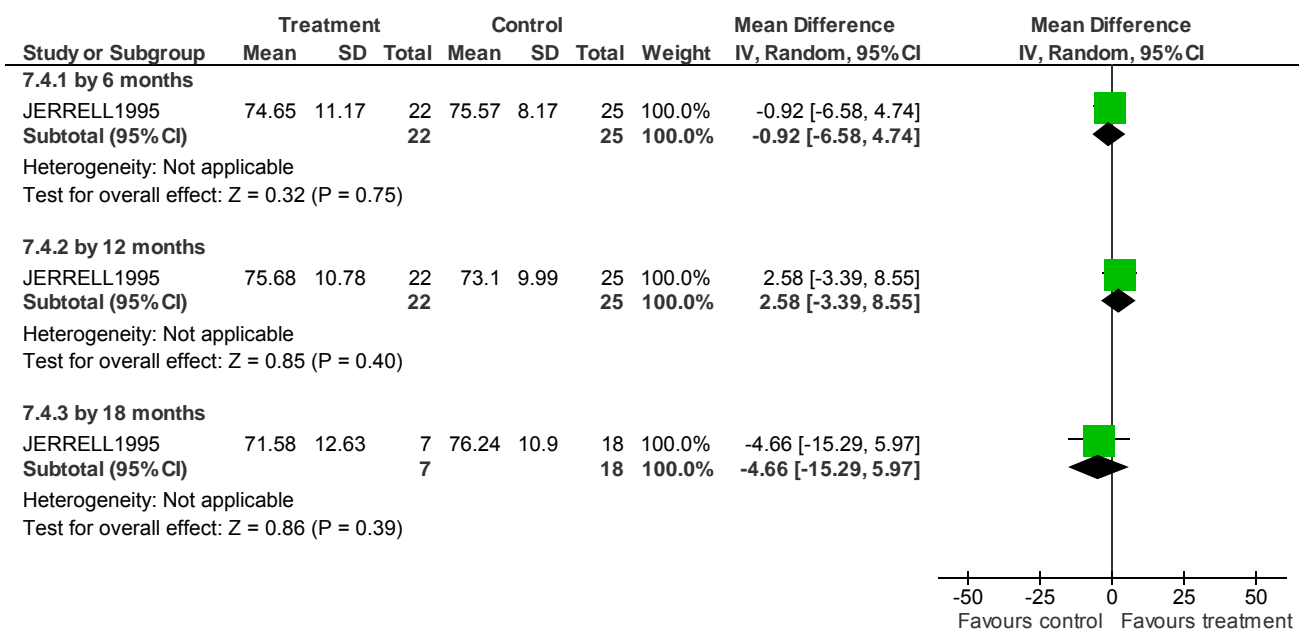


7.3 Functioning: 1. Average role functioning score (RFS, high = better functioning)

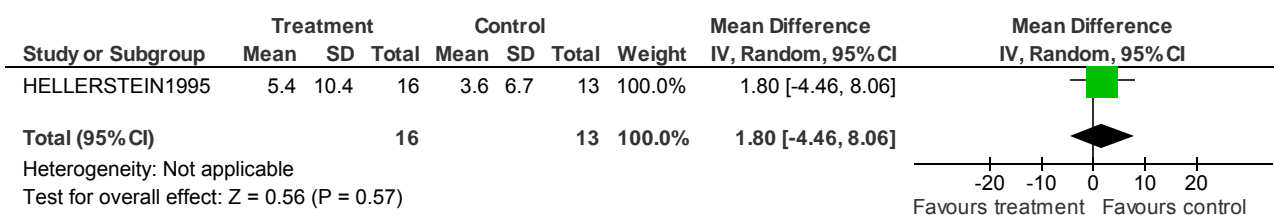


Psychological/psychosocial interventions - Forest plots

7.4 Functioning: 2. Average social adjustment score (SAS, high = better functioning)



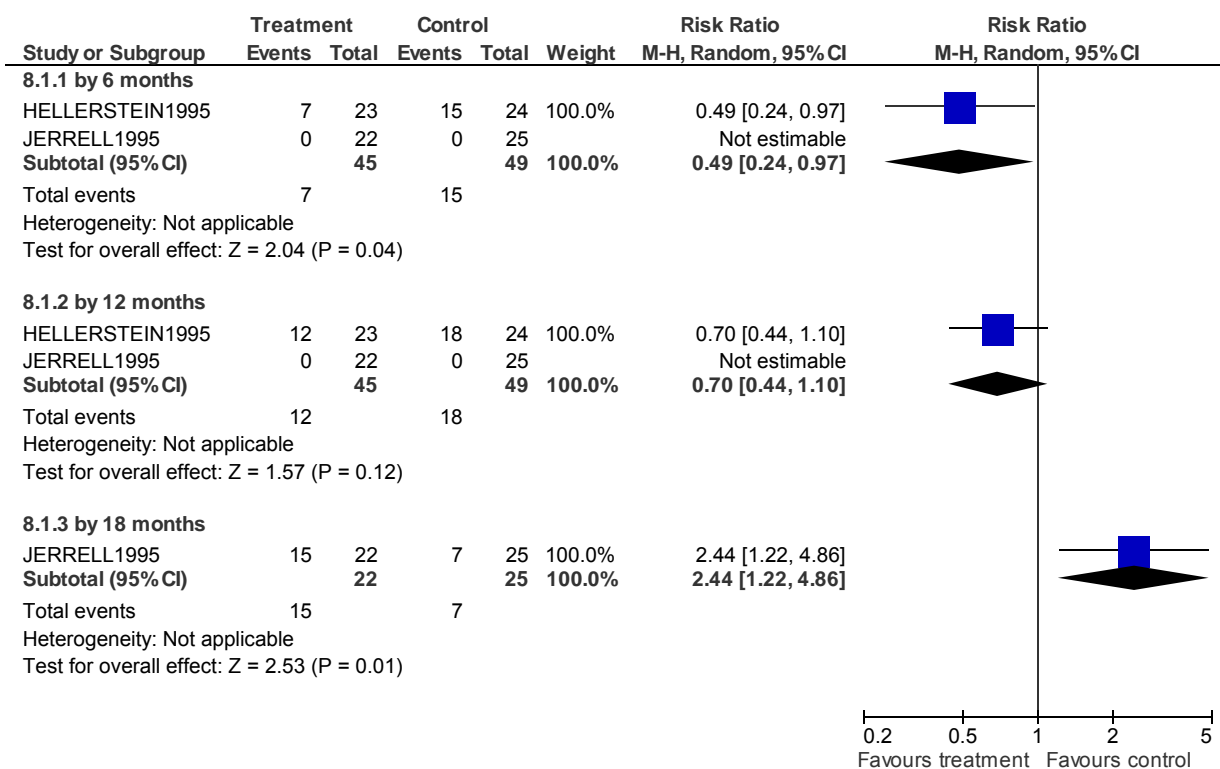
7.5 Service use: 1. Days in hospital (skewed data)



8 GROUP PSYCHOTHERAPY versus STANDARD CARE (non-critical outcomes)

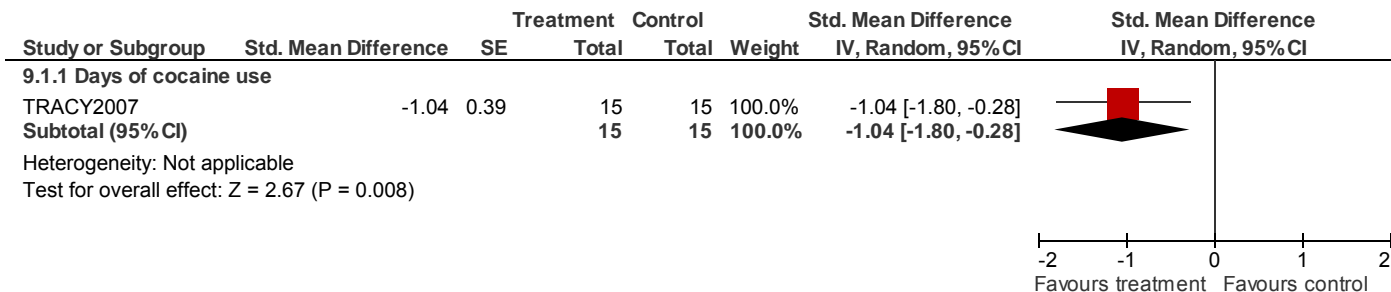
Psychological/psychosocial interventions - Forest plots

8.1 Lost to treatment



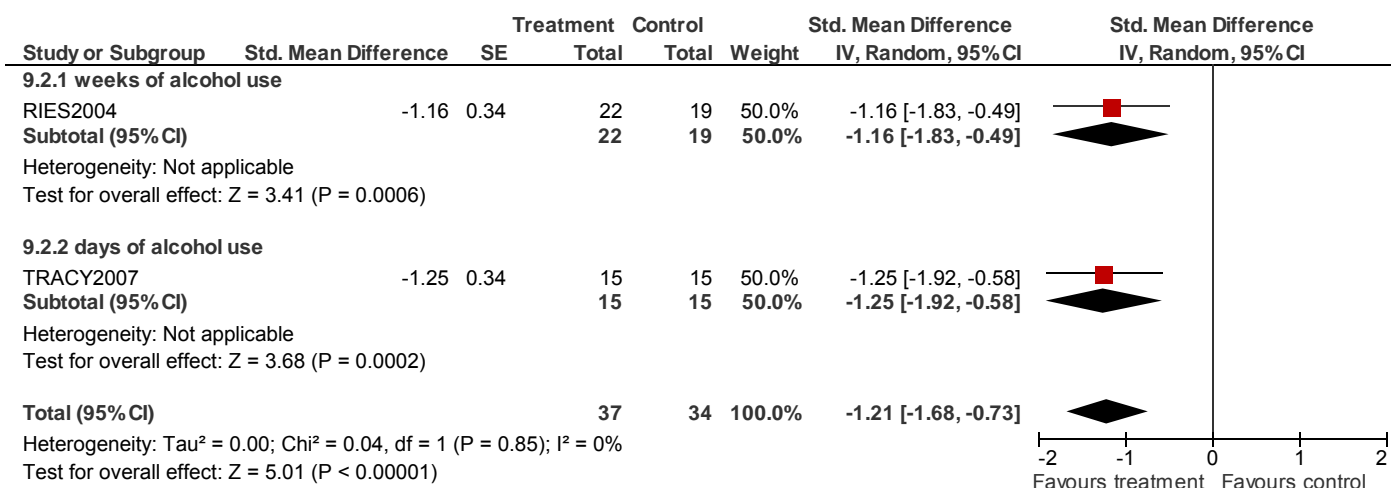
9 CONTINGENCY MANAGEMENT versus STANDARD CARE (critical outcomes)

9.1 Substance use: 1. No. of days/weeks of drug use (confirmation by urine drug screen)

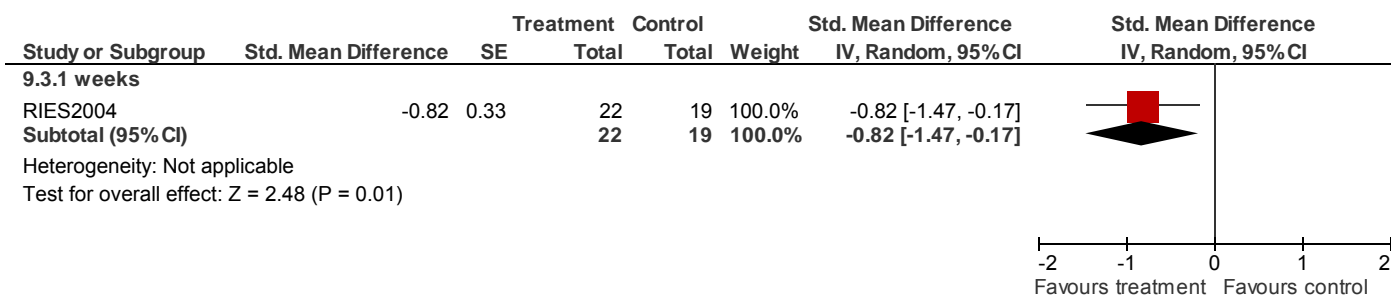


Psychological/psychosocial interventions - Forest plots

9.2 Substance use: 2. No. of days/weeks of alcohol use (confirmation by breathalyzer)



9.3 Substance use: 3. No. of days/weeks using both drugs and alcohol (confirmation by urine or breathalyzer)



9.4 Substance use: 4. Alcohol positive breathalyzer samples

