
APPENDIX 14D: CLINICAL EVIDENCE FOREST PLOTS:

COGNITION, EMPLOYMENT AND EDUCATION

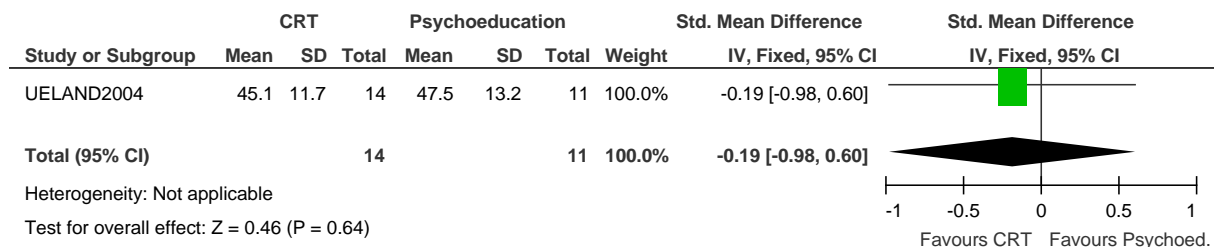
| | |
|--|---|
| 1. Cognitive remediation therapy (CRT) versus psychoeducation: 26 weeks post-treatment | 2 |
| 2. CRT versus psychoeducation: 52 weeks' follow-up | 3 |
| 3. Cognitive enhancement therapy (CRT plus and group-based social cognition therapy) versus psychoeducation: 104 weeks post-treatment..... | 4 |
| 4. CRT versus treatment as usual (TAU): 14 weeks post-treatment | 5 |
| 5. CRT versus treatment as usual (TAU): 26 weeks' follow-up..... | 6 |
| 6. CRT versus computer games (CG): 8 weeks post-treatment | 6 |
| 7. CRT versus computer games (CG): 26 weeks' follow-up..... | 7 |
| 8. Individual placement and support (IPS) versus EPPIC treatment as usual (TAU): 26 weeks post-treatment | 8 |

Abbreviations

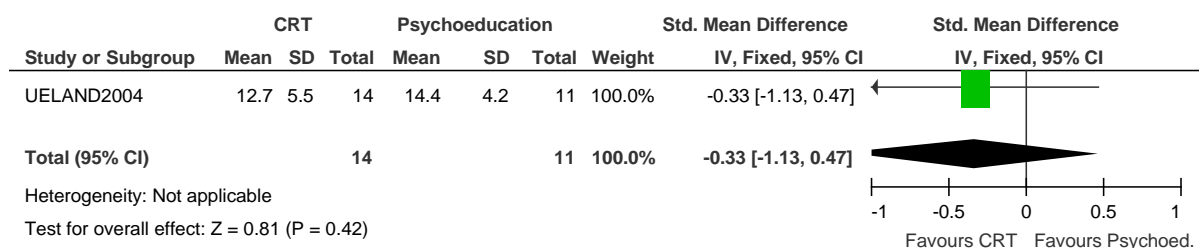
| | |
|-------|---|
| BPRS | Brief Psychiatric Rating Scale |
| CG | computer games |
| CGI-S | Clinical Global Impression scale - Severity |
| CI | confidence interval |
| CRT | cognitive remediation |
| EPPIC | Early Psychosis Prevention and Intervention Centre, Australia |
| GAS | Global Assessment Scale |
| IPS | individual placement and support |
| PANSS | Positive and Negative Syndrome Scale |
| SD | standard deviation |
| TAU | treatment as usual |

1. Cognitive remediation therapy (CRT) versus psychoeducation: 26 weeks post-treatment

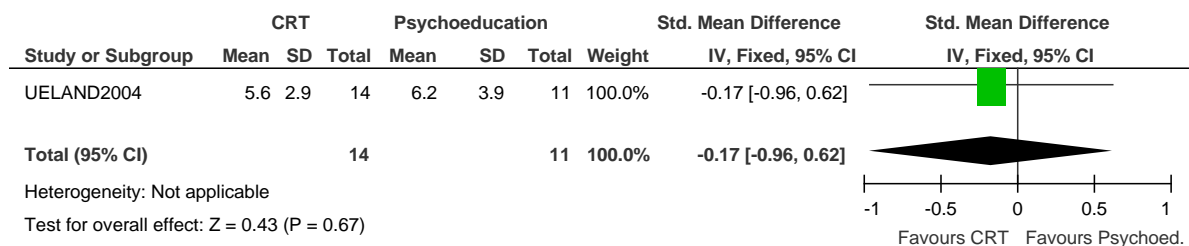
1.1 Mental state: total symptoms (BPRS)



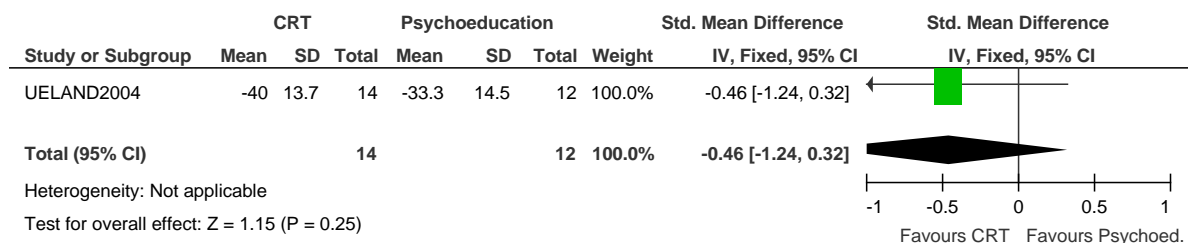
1.2 Mental state: positive symptoms (Brief Psychiatric Rating Scale [BPRS] Positive)



1.3 Mental state: negative symptoms (BPRS Negative)

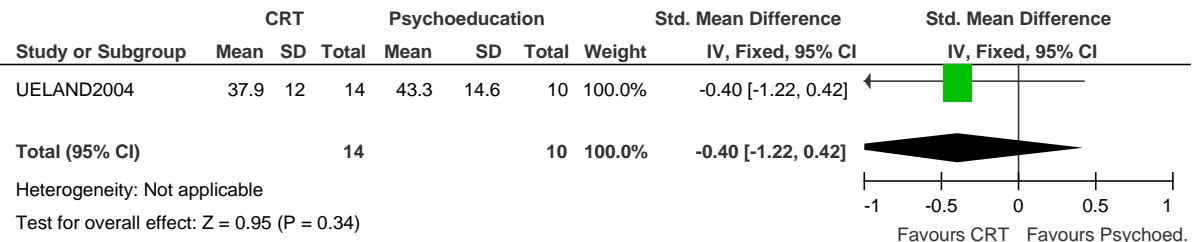


1.4 Functioning: psychosocial (Global Assessment Scale [GAS])

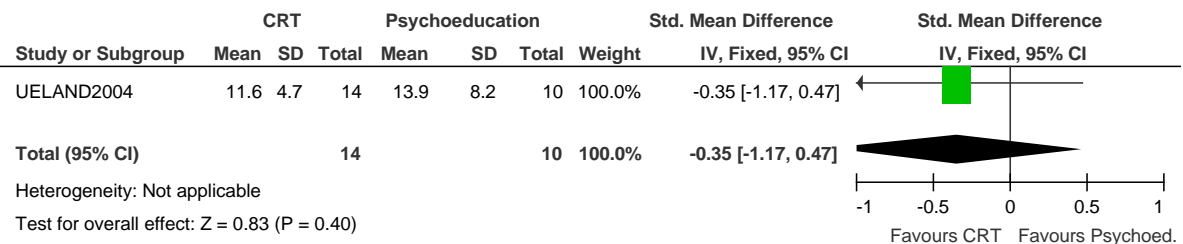


2. CRT versus psychoeducation: 52 weeks' follow-up

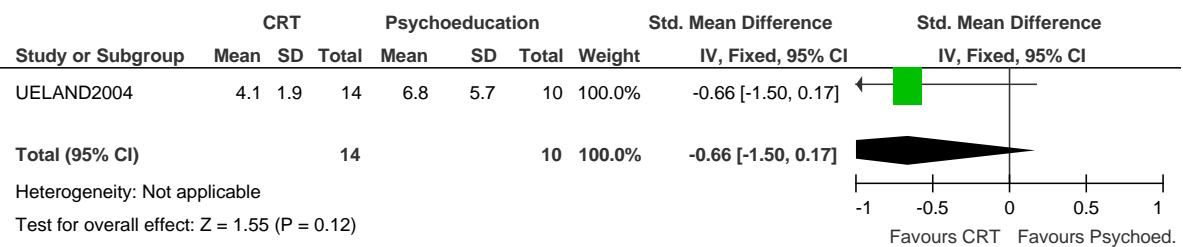
2.1 Mental state: total symptoms (BPRS)



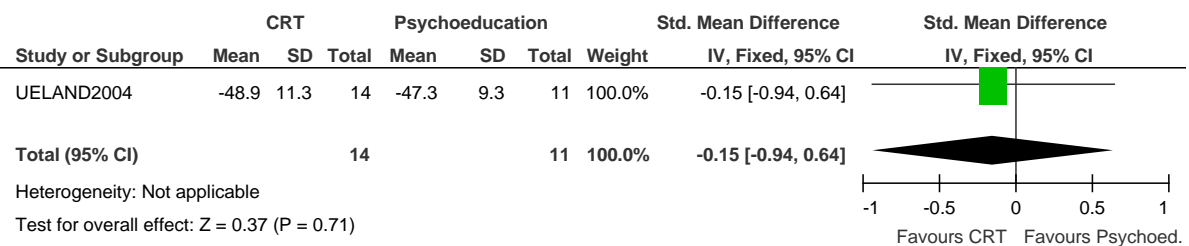
2.2 Mental state: positive symptoms (BPRS-positive)



2.3 Mental state: negative symptoms (BPRS-negative)

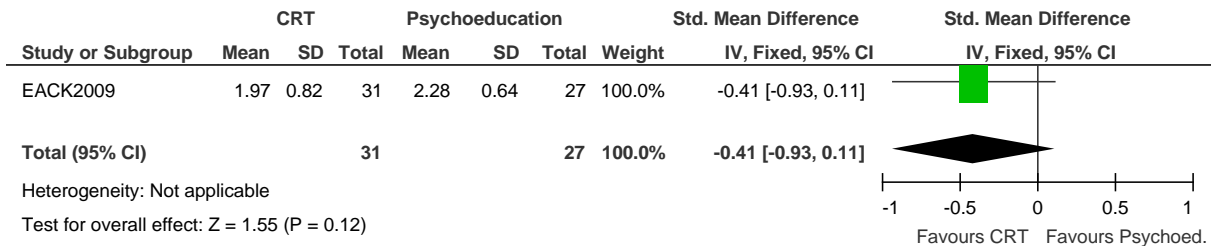


2.4 Functioning: psychosocial (GAS)

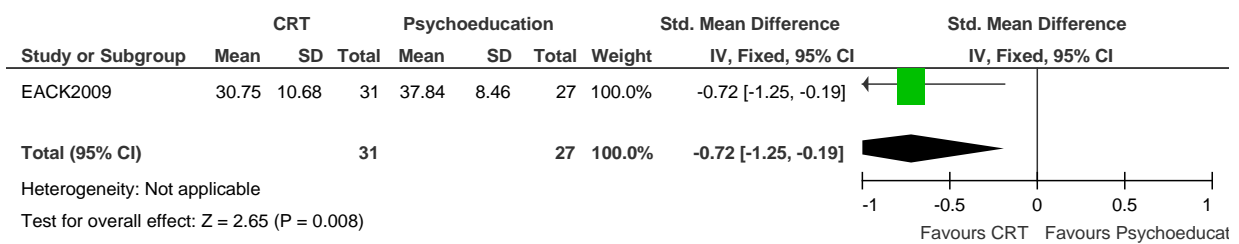


3. Cognitive enhancement therapy (CRT plus and group-based social cognition therapy) versus psychoeducation: 104 weeks post-treatment

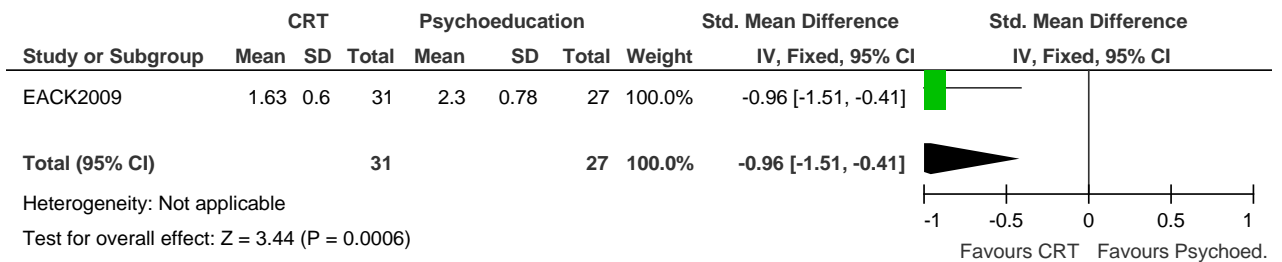
3.1 Mental state: anxiety/depression symptoms (BPRS)



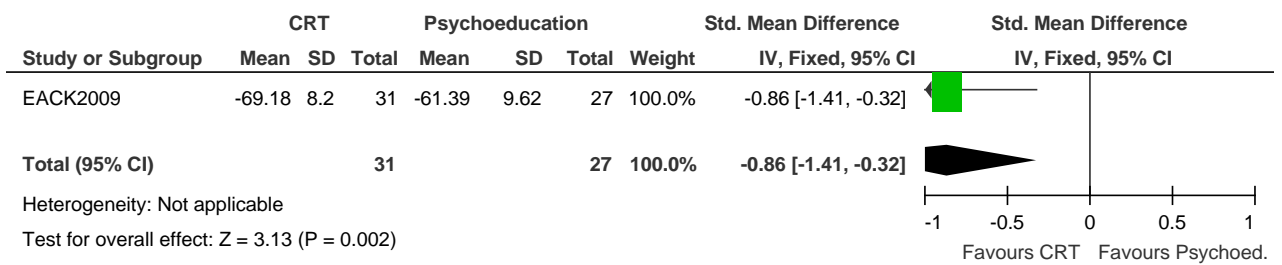
3.2 Mental state: total symptoms (composite score)



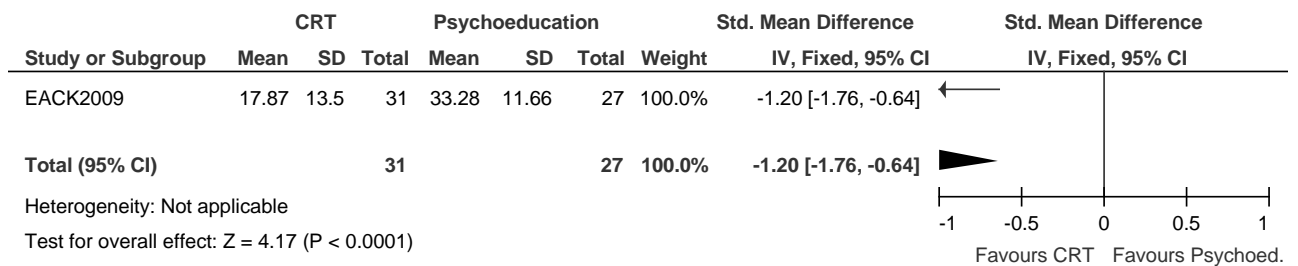
3.3 Mental state: negative symptoms (BPRS Withdrawal-Retardation)



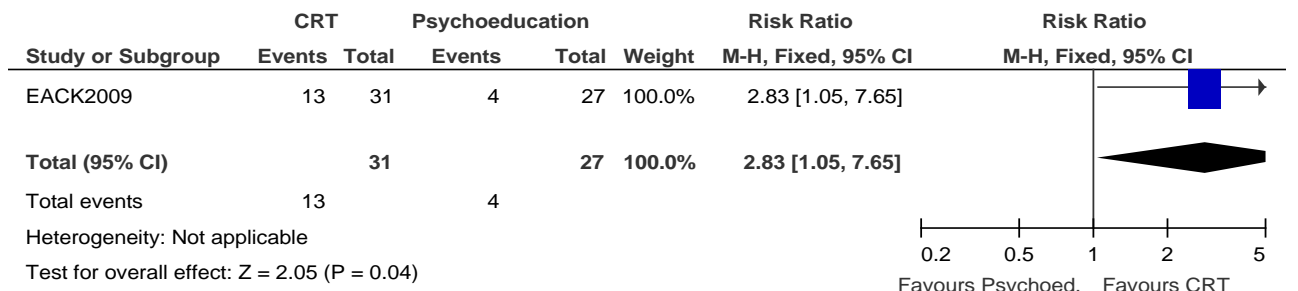
3.4 Functioning: psychosocial (GAS)



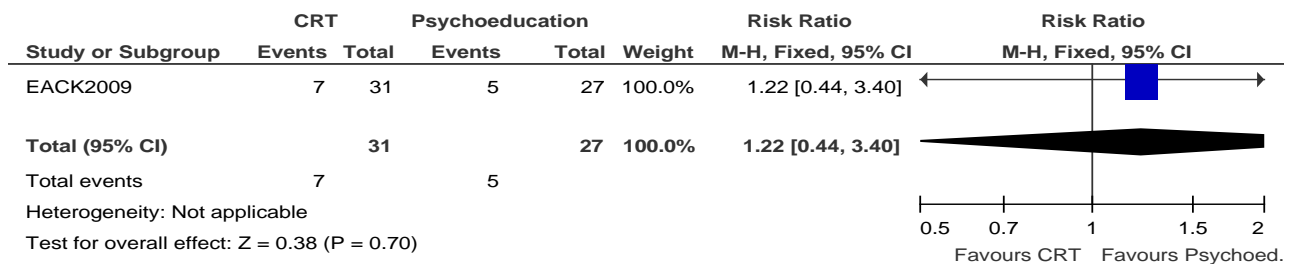
3.5 Cognition: social cognition (composite score)



3.6 Number of participants in competitive employment (assuming dropouts did not gain employment; Major Role Adjustment Inventory)

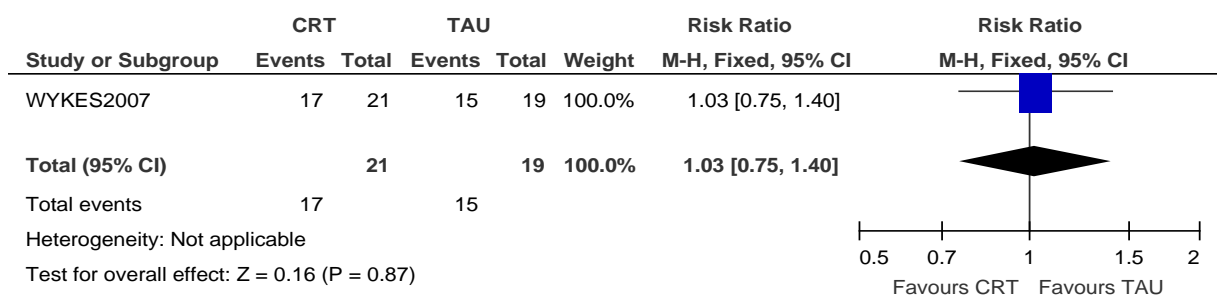


3.7 Leaving the study early for any reason



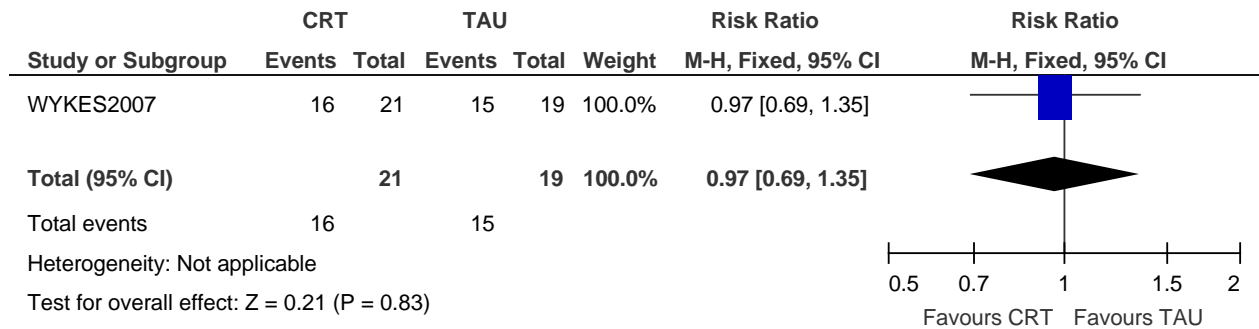
4. CRT versus treatment as usual (TAU): 14 weeks post-treatment

4.1 Leaving the study early for any reason



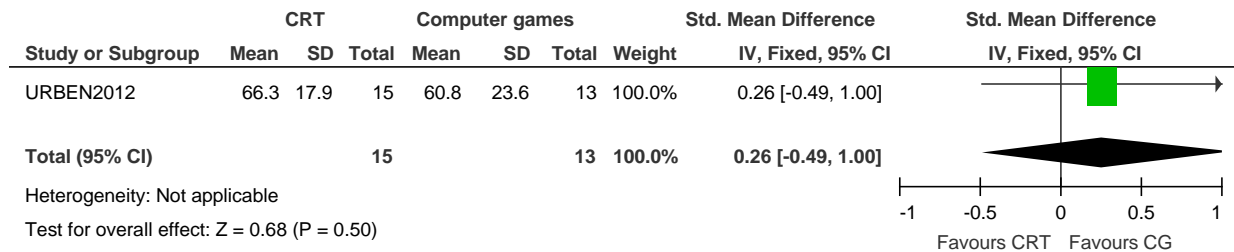
5. CRT versus treatment as usual (TAU): 26 weeks' follow-up

5.1 Leaving the study early for any reason

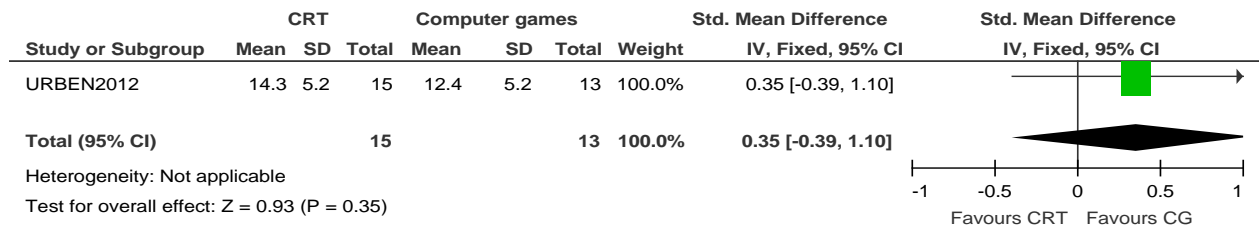


6. CRT versus computer games (CG): 8 weeks post-treatment

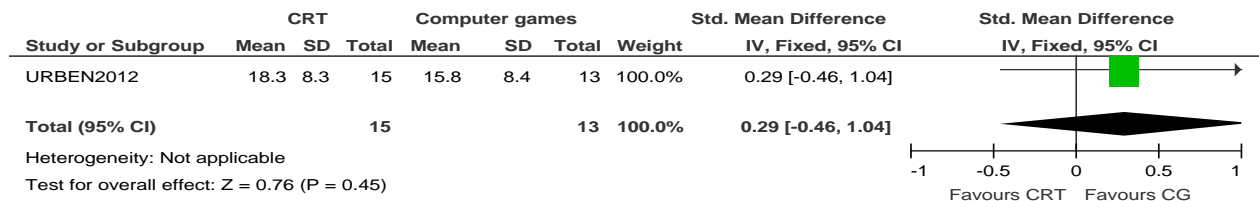
6.1 Mental state: total symptoms (Positive and Negative Syndrome Scale [PANSS] Total)



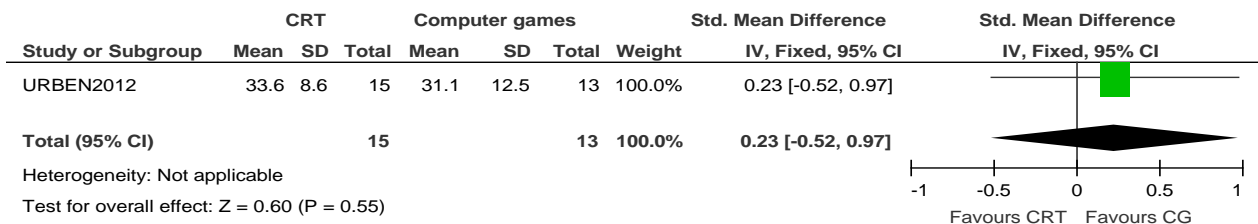
6.2 Mental state: positive symptoms (PANSS Positive)



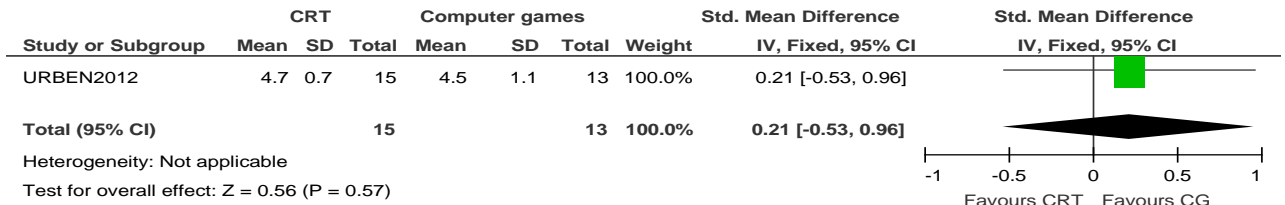
6.3 Mental state: negative symptoms (PANSS Negative)



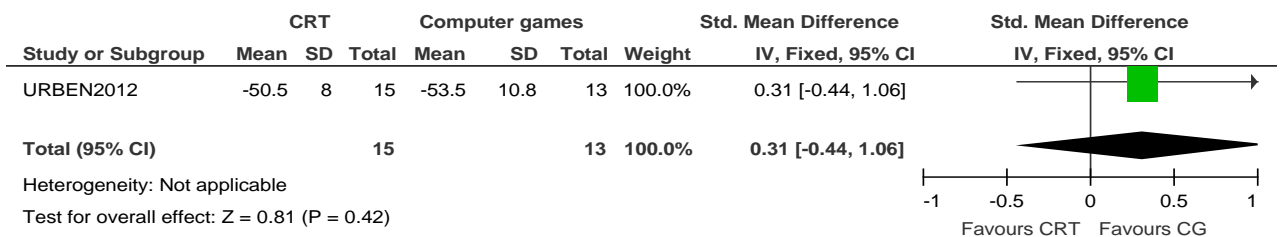
6.4 Mental state: general symptoms (PANSS General)



6.5 Global state (Clinical Global Impression scale - Severity [CGI-S])

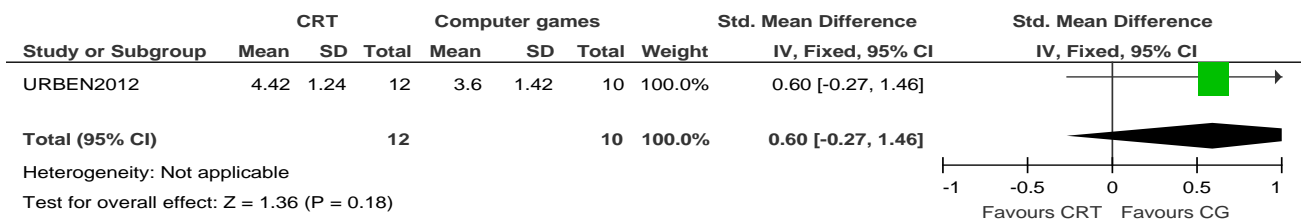


6.6 Social functioning (Social and Occupational Functioning Assessment Scale [SOFAS])

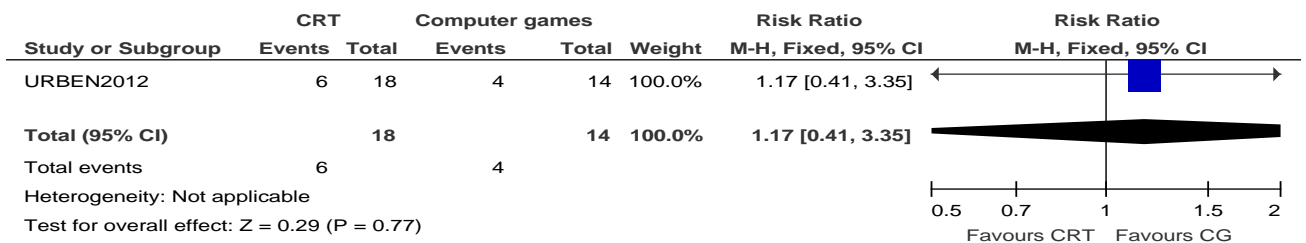


7. CRT versus computer games (CG): 26 weeks' follow-up

7.1 Global state (CGI-S)

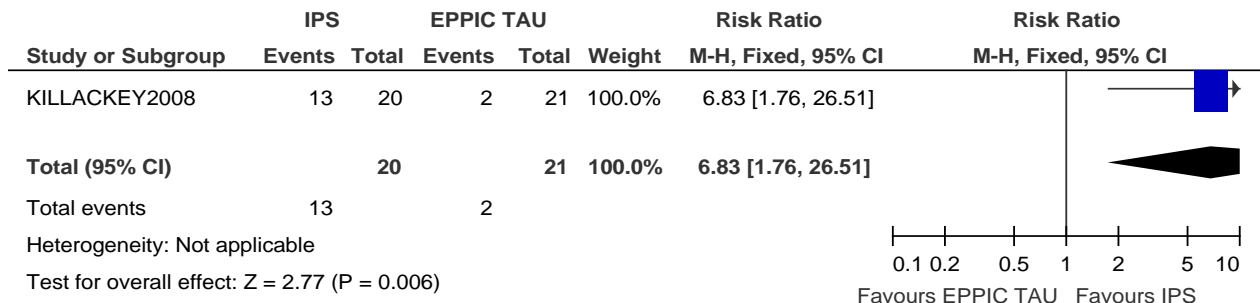


7.2 Leaving the study early for any reason

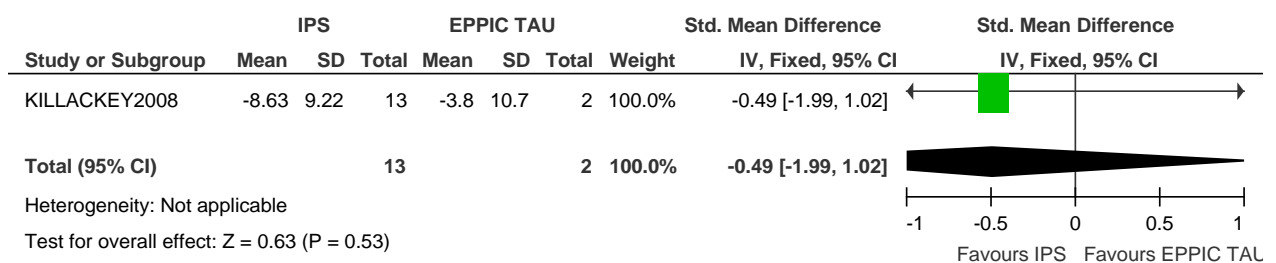


8. Individual placement and support (IPS) versus EPPIC treatment as usual (TAU): 26 weeks post-treatment

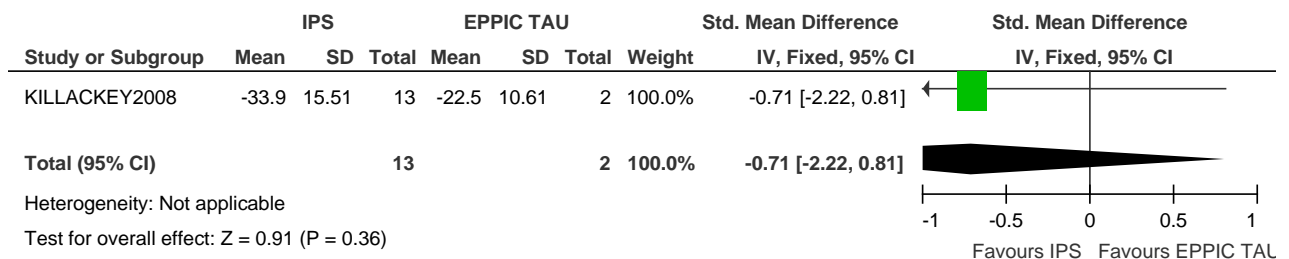
8.1 Number of participants in employment/enrolled on a course (assuming dropouts did not gain employment)



8.2 Number of weeks worked



8.3 Number of hours worked per week



8.4 Leaving the study early for any reason

