

FOREST PLOTS

A review of the effectiveness and cost effectiveness of personal, social and health education in primary schools focusing on sex and relationships and alcohol education for young people aged 5 to 11 years

Lisa Jones, Geoff Bates, Jennifer Downing, Harry Sumnall, Mark A Bellis

Centre for Public Health, Liverpool John Moores University



Table of figures

Figure 1. AMPS: Alcohol use in 7/8 th grade (Shope et al., 1992; RCT -).....	3
Figure 2. AMPS: Alcohol misuse in 7/8 th grade (Shope et al., 1992; RCT -).....	4
Figure 3. AMPS: Curriculum index scores in 7/8 th grade (Shope et al., 1992; RCT -).....	5
Figure 4. PY/PM: intervention effects (Padget et al., 2006; NRCT +)	6
Figure 5. LST: Intervention effects (Botvin et al., 2003; RCT -)	7
Figure 6. ALF: Intervention effects (Bühler et al., 2008; RCT +).....	8
Figure 7. Project Charlie: Intervention effects - dichotomous (Hurry & McGurk, 1997; Hurry et al., 2000; both RCT -).....	9
Figure 8. Project Charlie: Intervention effects - continuous (Hurry & McGurk, 1997; Hurry et al., 2000; both RCT -).....	10
Figure 9. BABES: Intervention effects (Abbey et al., 1990; RCT +).....	11
Figure 10. BABES Plus: Intervention effects (Hahn et al., 2007; NRCT +)	12
Figure 11. Refusal skills intervention: Intervention effects (Corbin et al., 1993; RCT -)	13
Figure 12. Life Education Centres: Intervention effects (school-level analysis) (Hawthorne 1995; CBA -).....	14
Figure 14. SCW: Intervention effects at 18-month follow-up (Denny & Young, 2006; NRCT -).....	15
Figure 15. SCW: Sexual health outcomes at 18-month follow-up (Denny & Young, 2006; NRCT -).....	16
Figure 16. Learning about Parenting: Intervention effects (Masterpasqua et al., 1992; NRCT -)	17
Figure 17. GBG: Intervention effects on alcohol use/dependence disorders in young adulthood (Kellam et al., 2008; RCT ++)	18
Figure 18. SSDP: Intervention effects at age 18 (Hawkins et al., 1999; NRCT +).....	19
Figure 19. SSDP: Intervention effects at age 21 (Hawkins et al., 2005; NRCT +).....	20
Figure 20. SSDP: Intervention effects at age 21 - dichotomous (Lonczak et al., 2002; NRCT +).....	21
Figure 21. SSDP: Intervention effects at age 21 - continuous (Lonczak et al., 2002; NRCT +).....	22
Figure 22. Developmental drug prevention programme: Unsupervised alcohol use (Furr-Holden et al., 2004; RCT +)	23

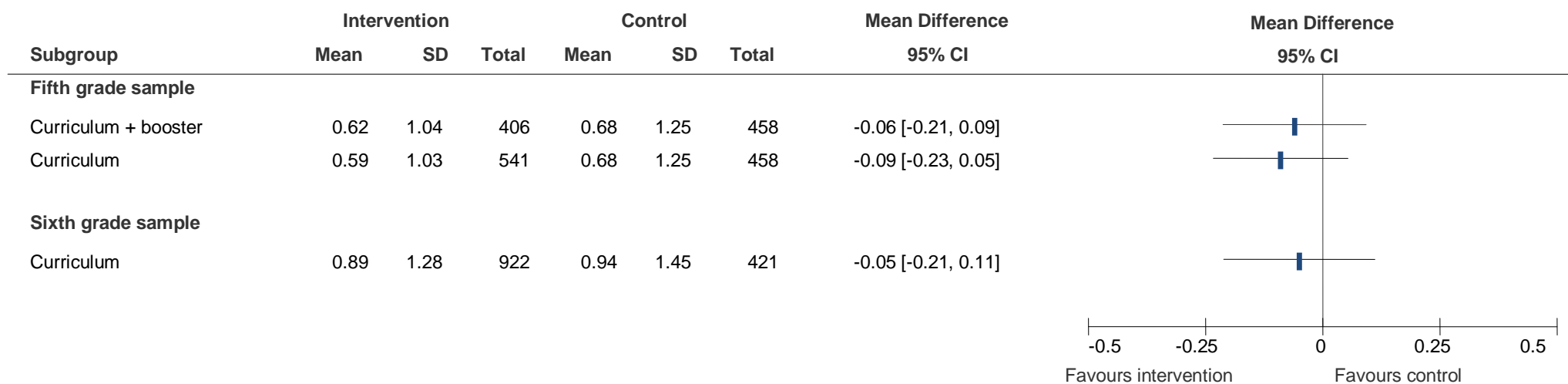


Figure 1. AMPS: Alcohol use in 7/8th grade (Shope et al., 1992; RCT -)

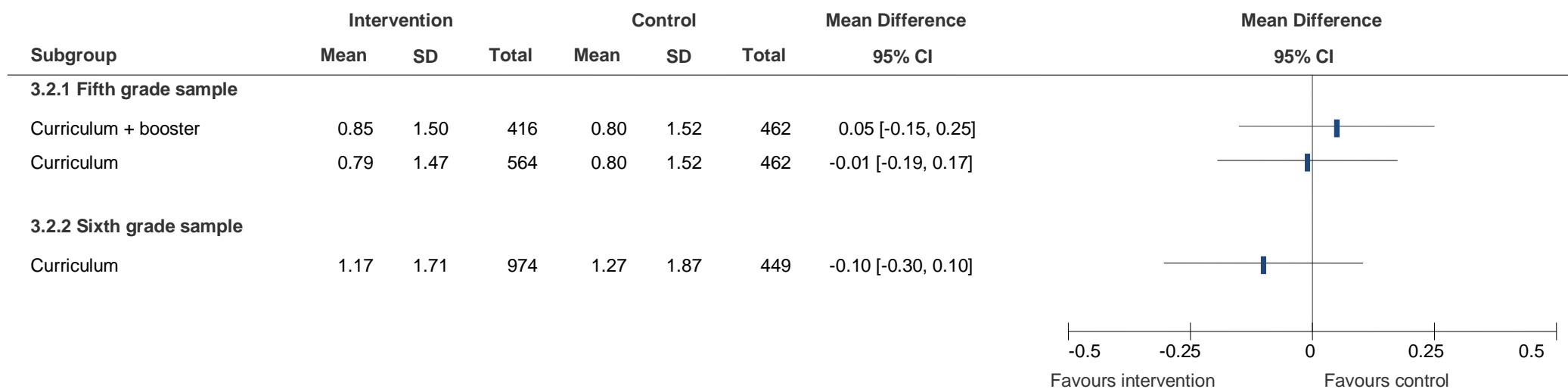


Figure 2. AMPS: Alcohol misuse in 7/8th grade (Shope et al., 1992; RCT -)

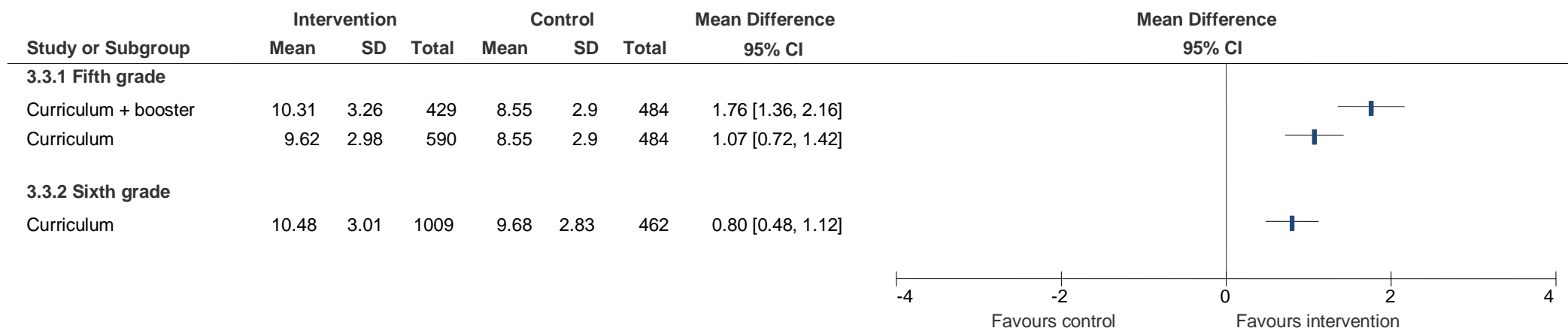
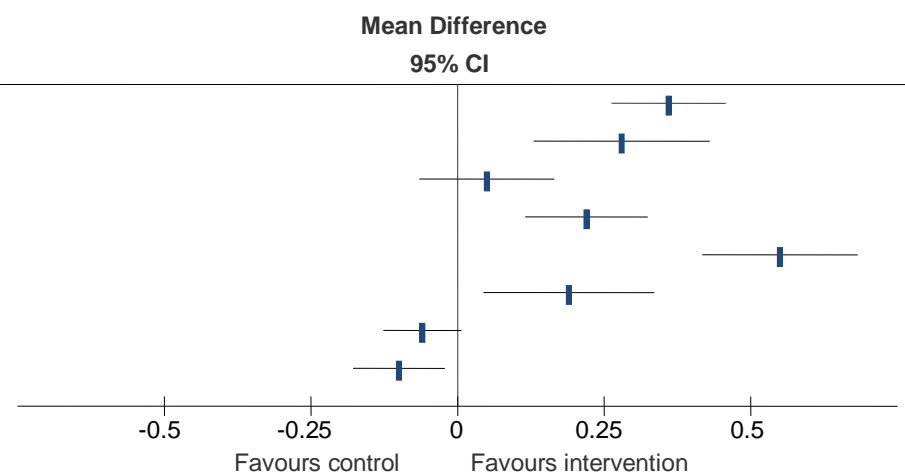


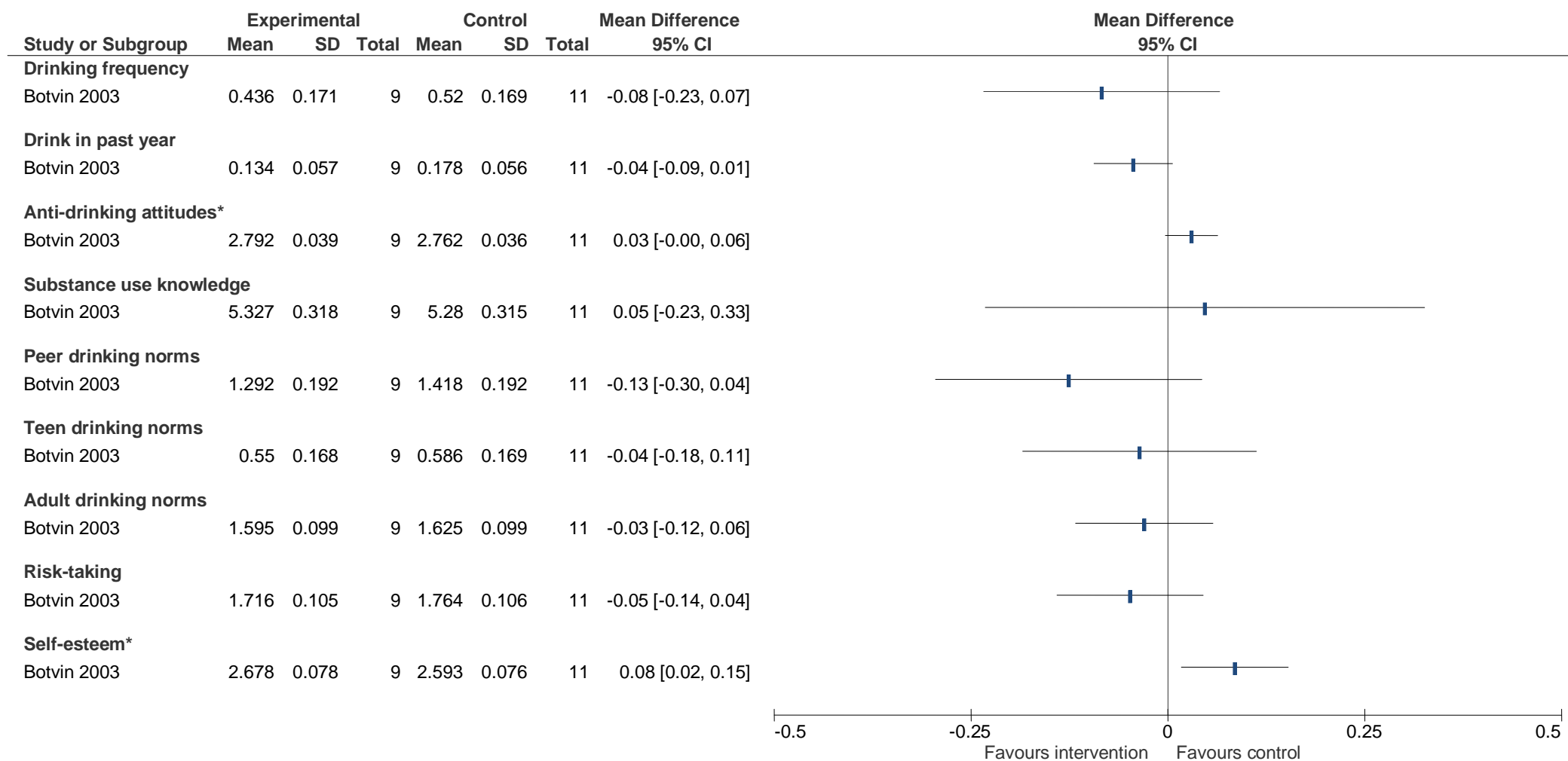
Figure 3. AMPS: Curriculum index scores in 7/8th grade (Shope et al., 1992; RCT -)

Study or Subgroup	Intervention			Control			Mean Difference 95% CI
	Mean	SD	Total	Mean	SD	Total	
Knowledge about brain and alcohol	3.74	0.35	283	3.38	0.55	151	0.36 [0.26, 0.46]
Perceived harm underage drinking	3.00	0.77	283	2.72	0.75	151	0.28 [0.13, 0.43]
Alcohol intentions	2.40	0.58	283	2.35	0.58	151	0.05 [-0.06, 0.16]
Media literacy	3.44	0.5	283	3.22	0.54	151	0.22 [0.12, 0.32]
Vehicle safety skills	3.62	0.56	283	3.07	0.72	151	0.55 [0.42, 0.68]
Attitudes underage drinking	3.80	0.54	283	3.61	0.82	151	0.19 [0.04, 0.34]
Drank past 30 days*	0.09	0.28	283	0.15	0.36	151	-0.06 [-0.13, 0.01]
Riding with a drinking driver*	0.13	0.34	283	0.23	0.42	151	-0.10 [-0.18, -0.02]



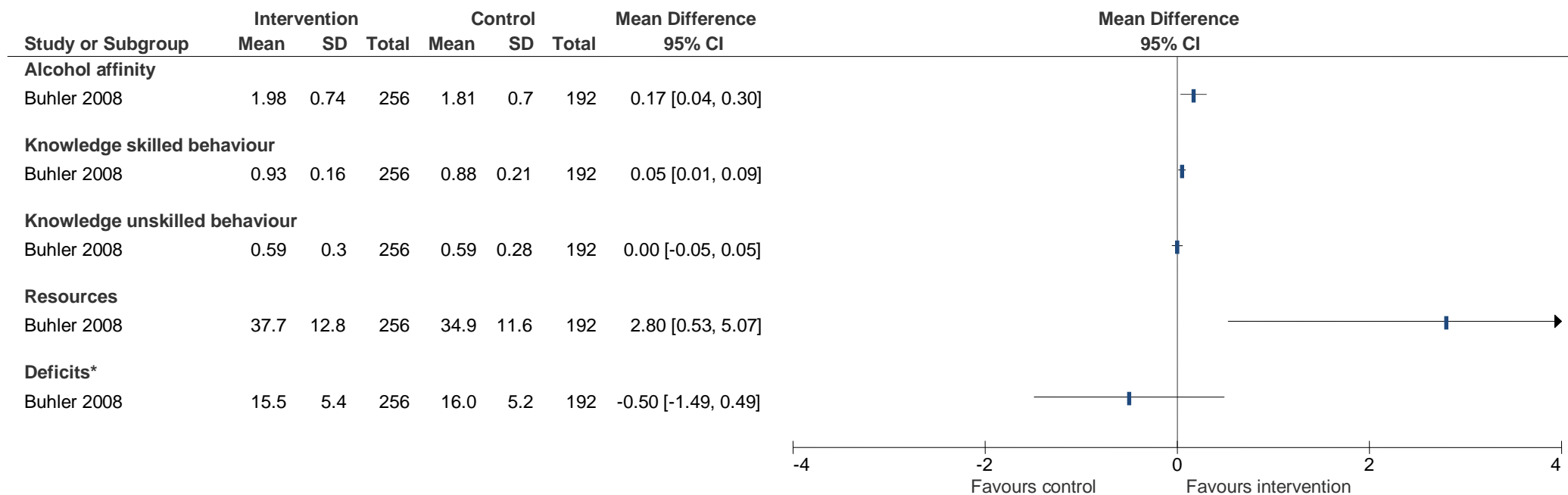
*Intervention effects reversed (i.e. direction favours intervention rather than control as indicated)

Figure 4. PY/PM: intervention effects (Padget et al., 2006; NRCT +)



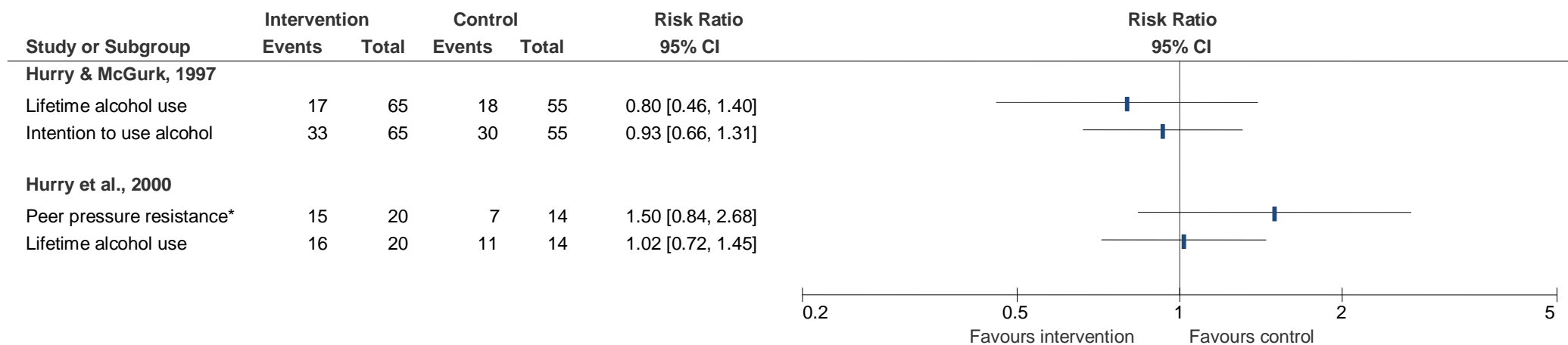
*Intervention effects reversed (i.e. direction favours intervention rather than control as indicated)

Figure 5. LST: Intervention effects (Botvin et al., 2003; RCT -)



*Intervention effects reversed (i.e. direction favours intervention rather than control as indicated)

Figure 6. ALF: Intervention effects (Bühler et al., 2008; RCT +)



*Intervention effects reversed (i.e. direction favours intervention rather than control as indicated)

Figure 7. Project Charlie: Intervention effects - dichotomous (Hurry & McGurk, 1997; Hurry et al., 2000; both RCT -)

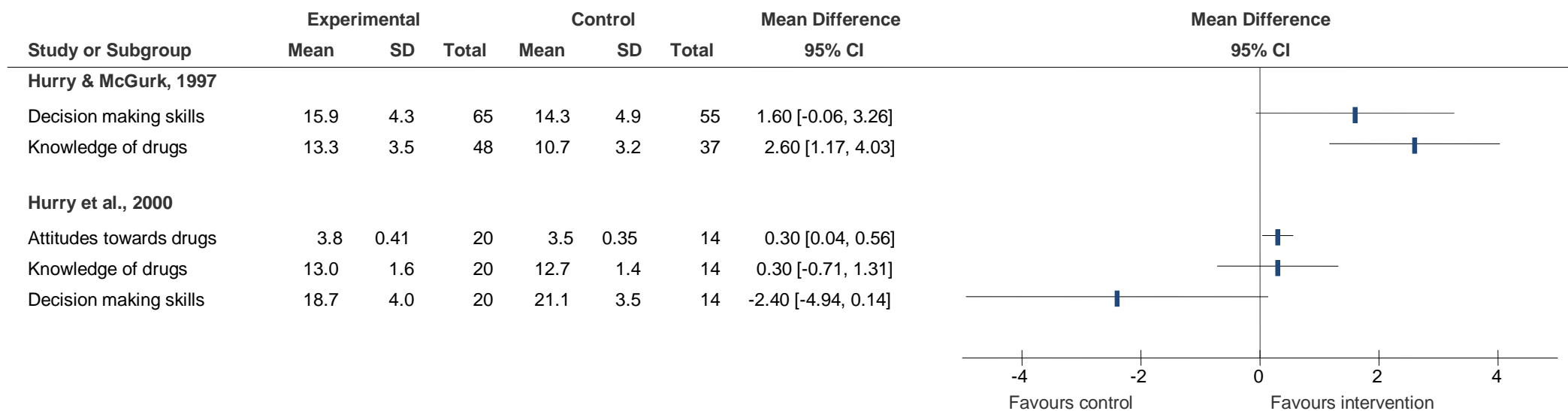


Figure 8. Project Charlie: Intervention effects - continuous (Hurry & McGurk, 1997; Hurry et al., 2000; both RCT -)

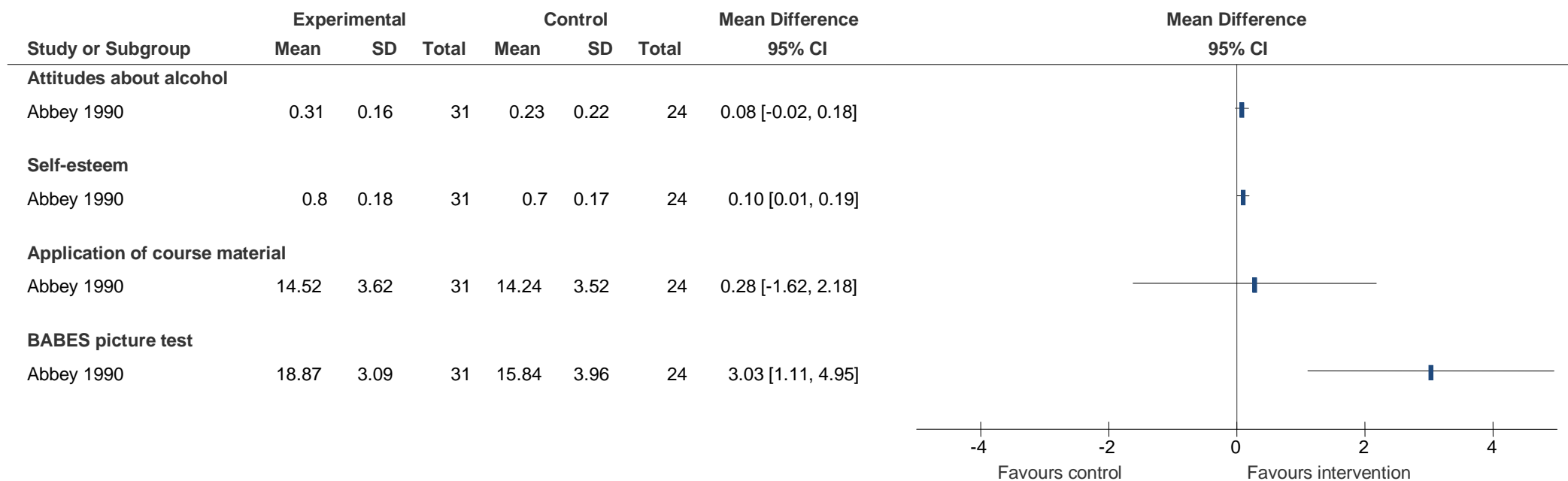
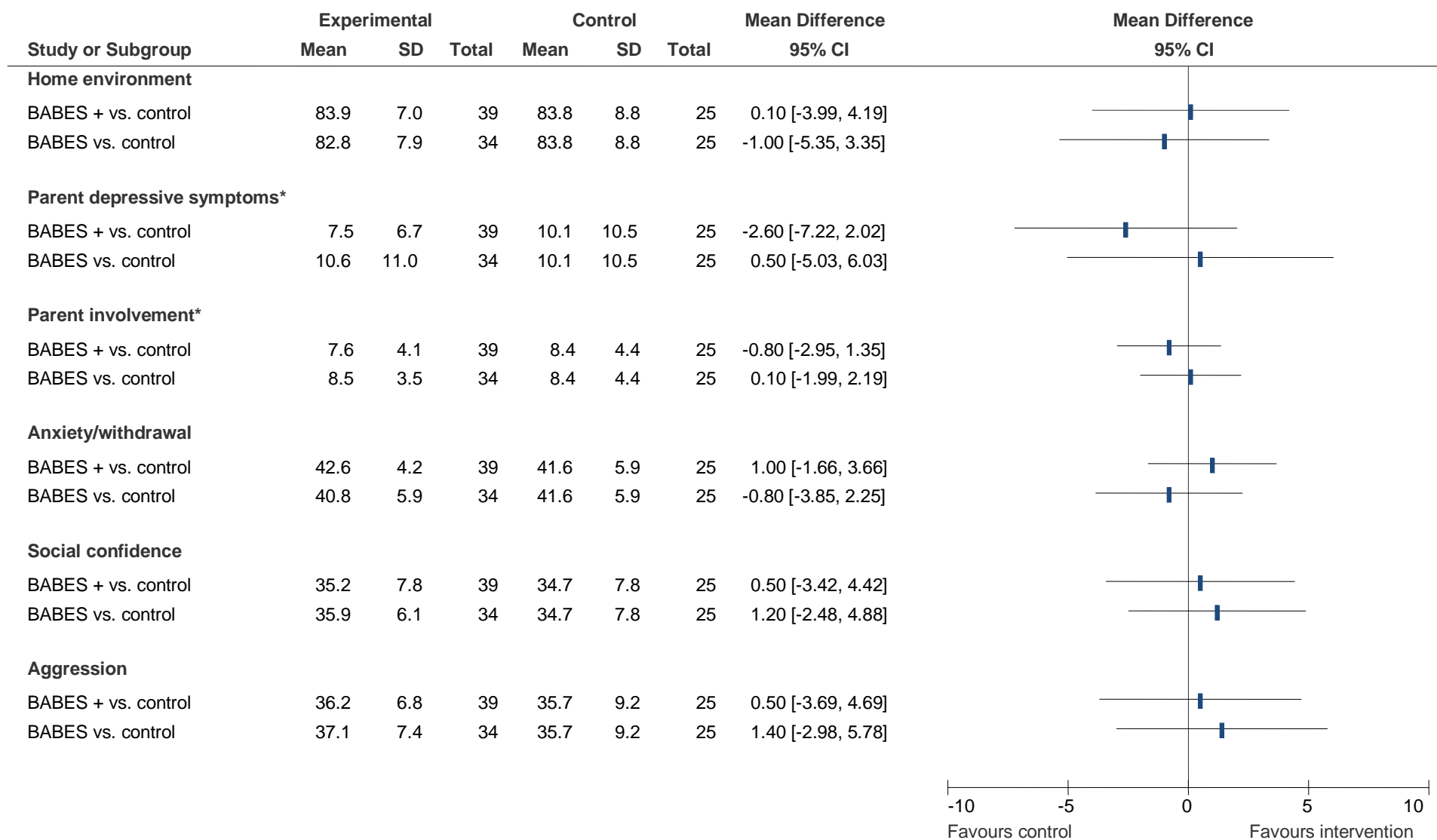


Figure 9. BABES: Intervention effects (Abbey et al., 1990; RCT +)



*Intervention effects reversed (i.e. direction favours intervention rather than control as indicated)

Figure 10. BABES Plus: Intervention effects (Hahn et al., 2007; NRCT +)

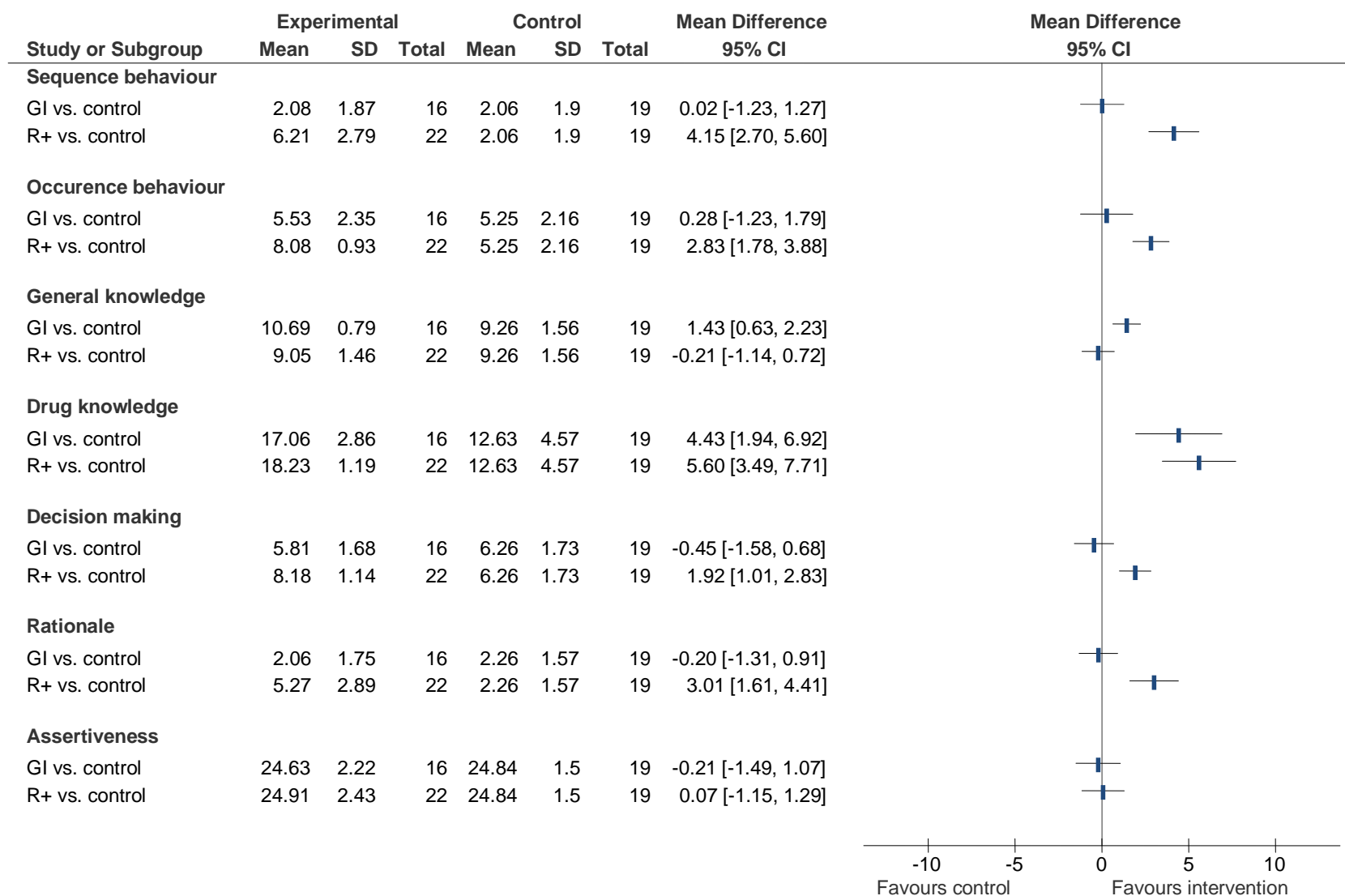


Figure 11. Refusal skills intervention: Intervention effects (Corbin et al., 1993; RCT -)

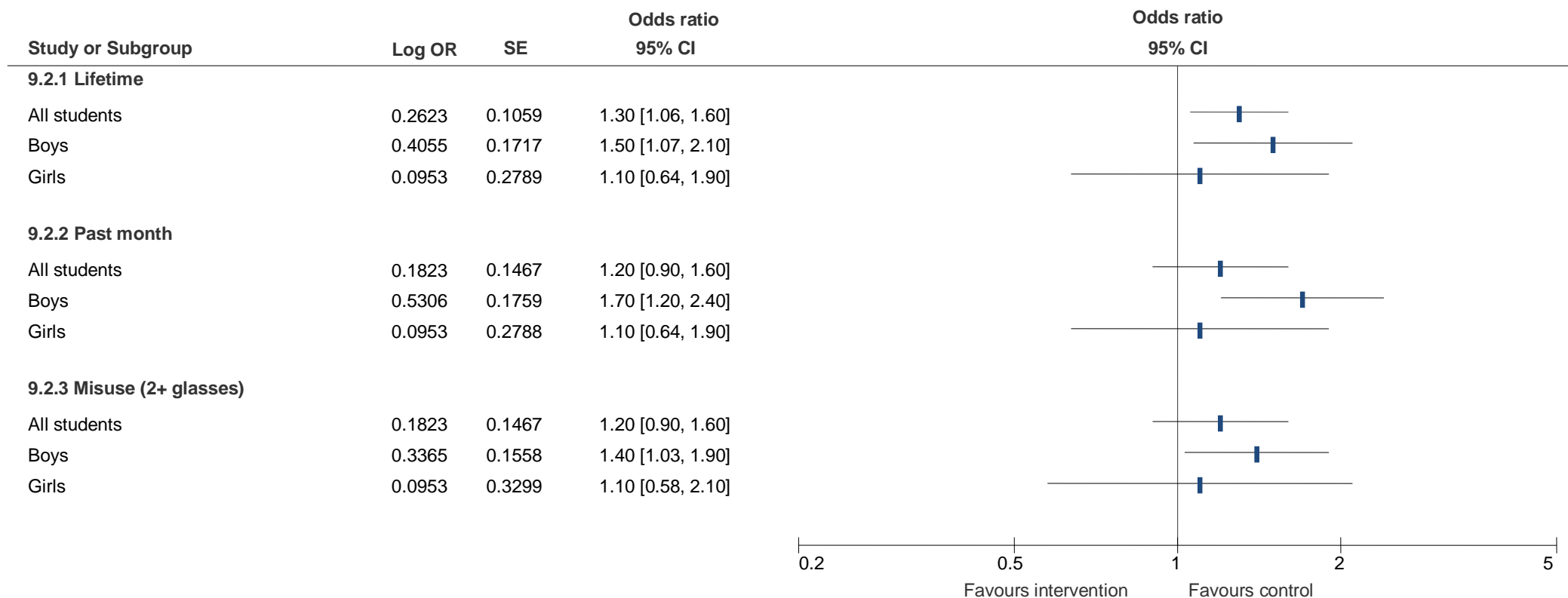


Figure 12. Life Education Centres: Intervention effects (school-level analysis) (Hawthorne 1995; CBA -)

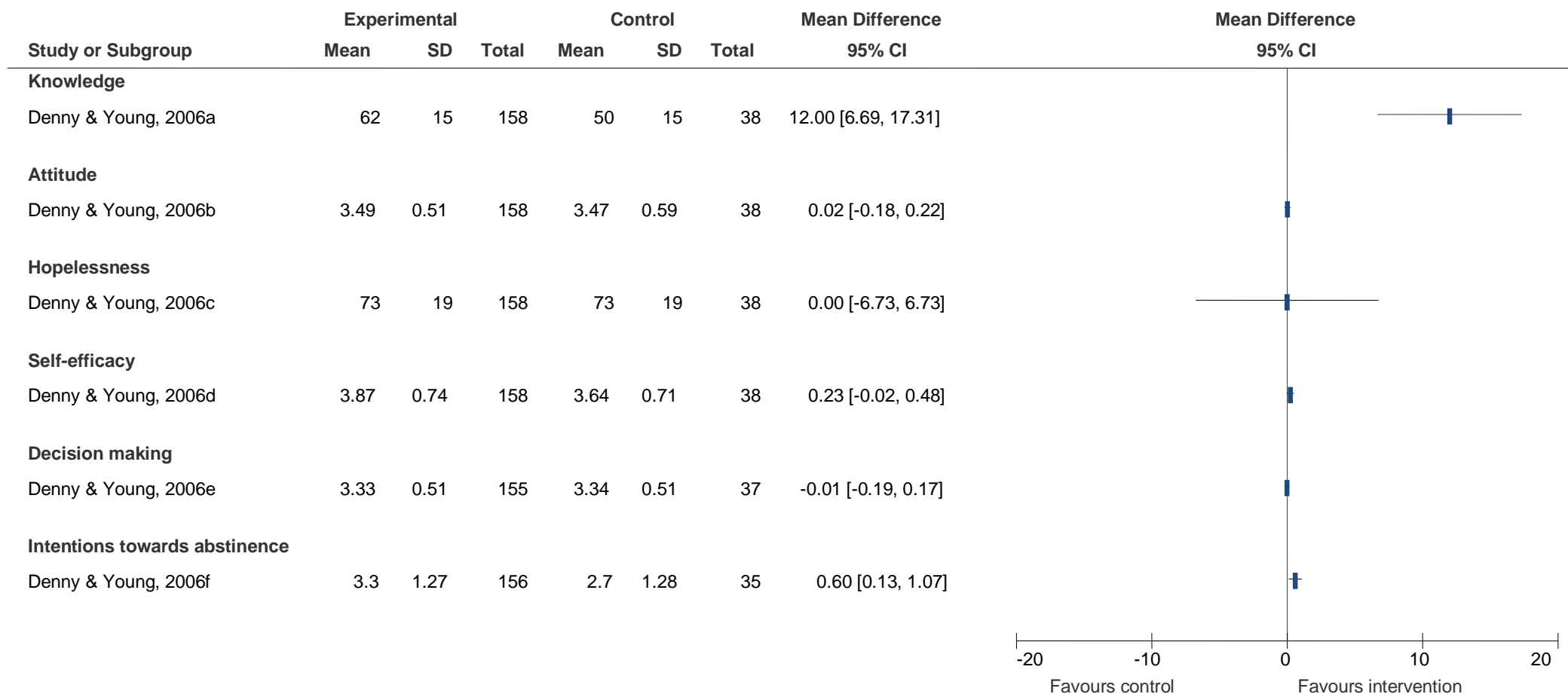


Figure 13. SCW: Intervention effects at 18-month follow-up (Denny & Young, 2006; NRCT -)

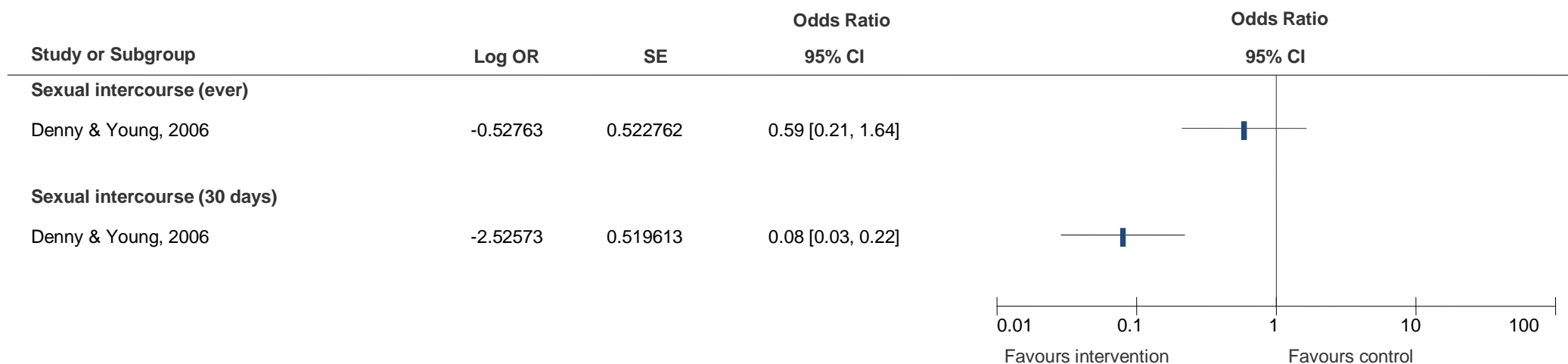


Figure 14. SCW: Sexual health outcomes at 18-month follow-up (Denny & Young, 2006; NRCT -)

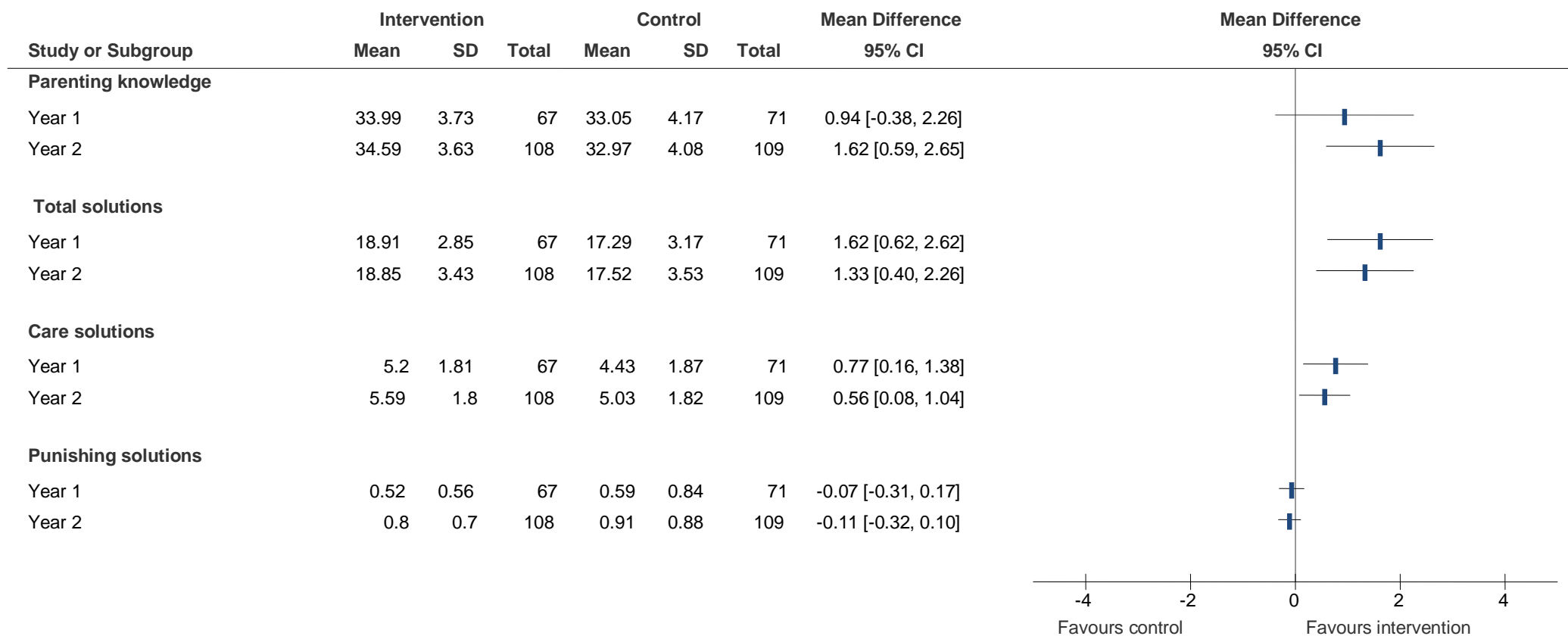


Figure 15. Learning about Parenting: Intervention effects (Masterpasqua et al., 1992; NRCT -)

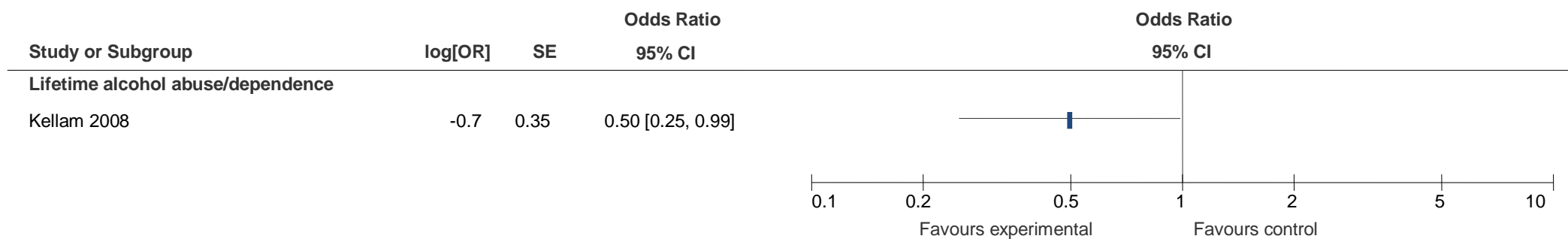


Figure 16. GBG: Intervention effects on alcohol use/dependence disorders in young adulthood (Kellam et al., 2008; RCT ++)

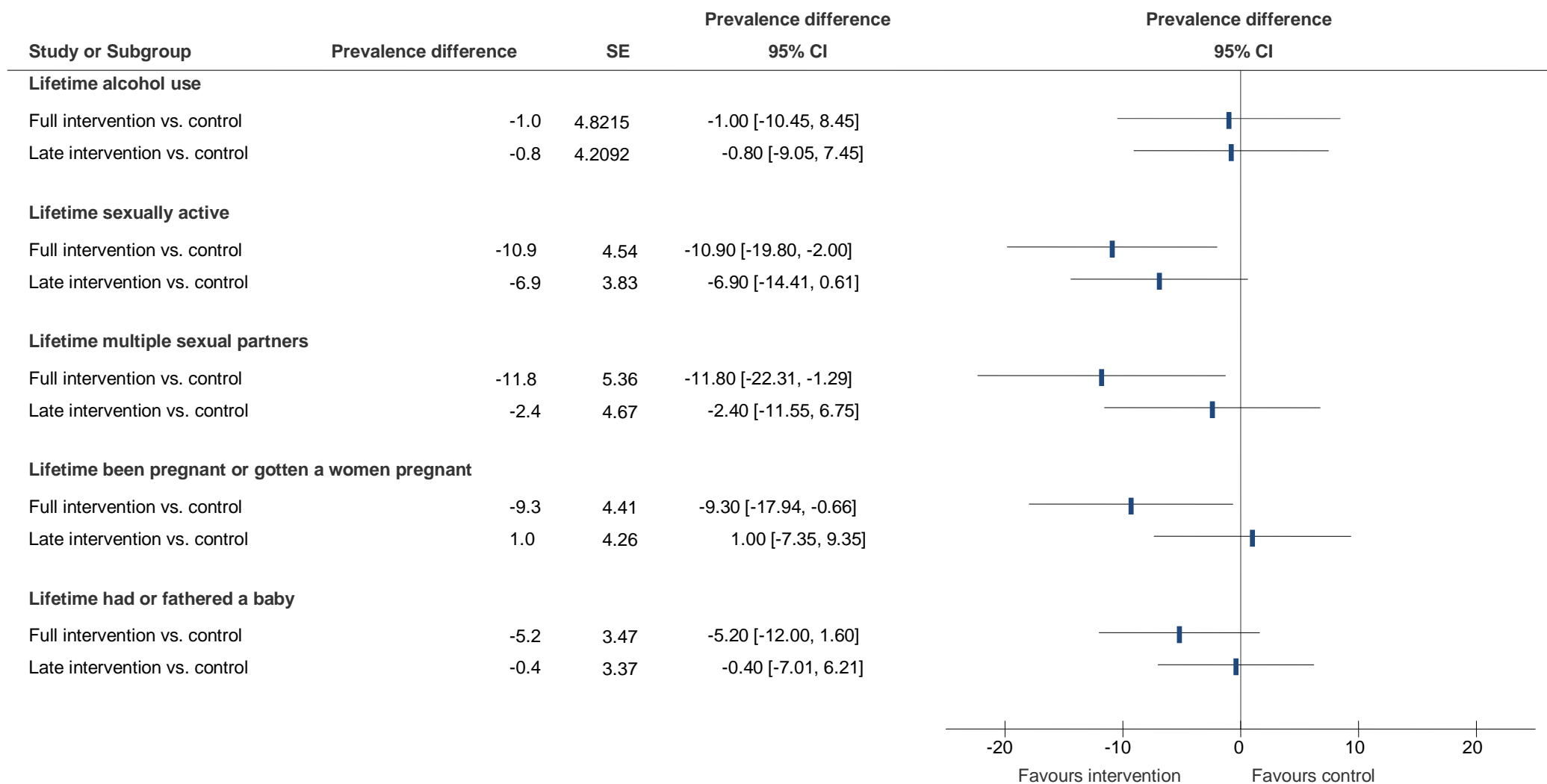
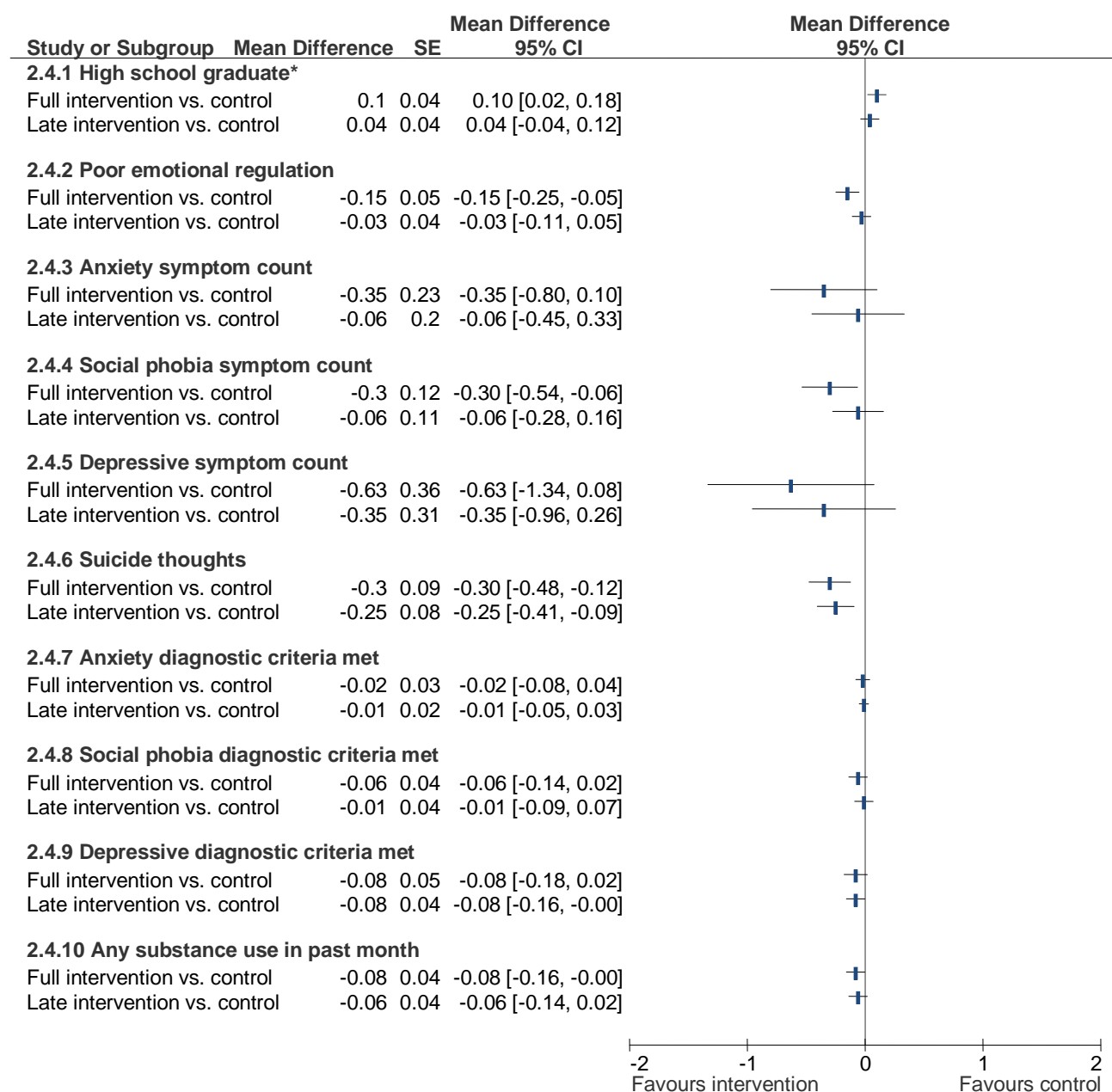
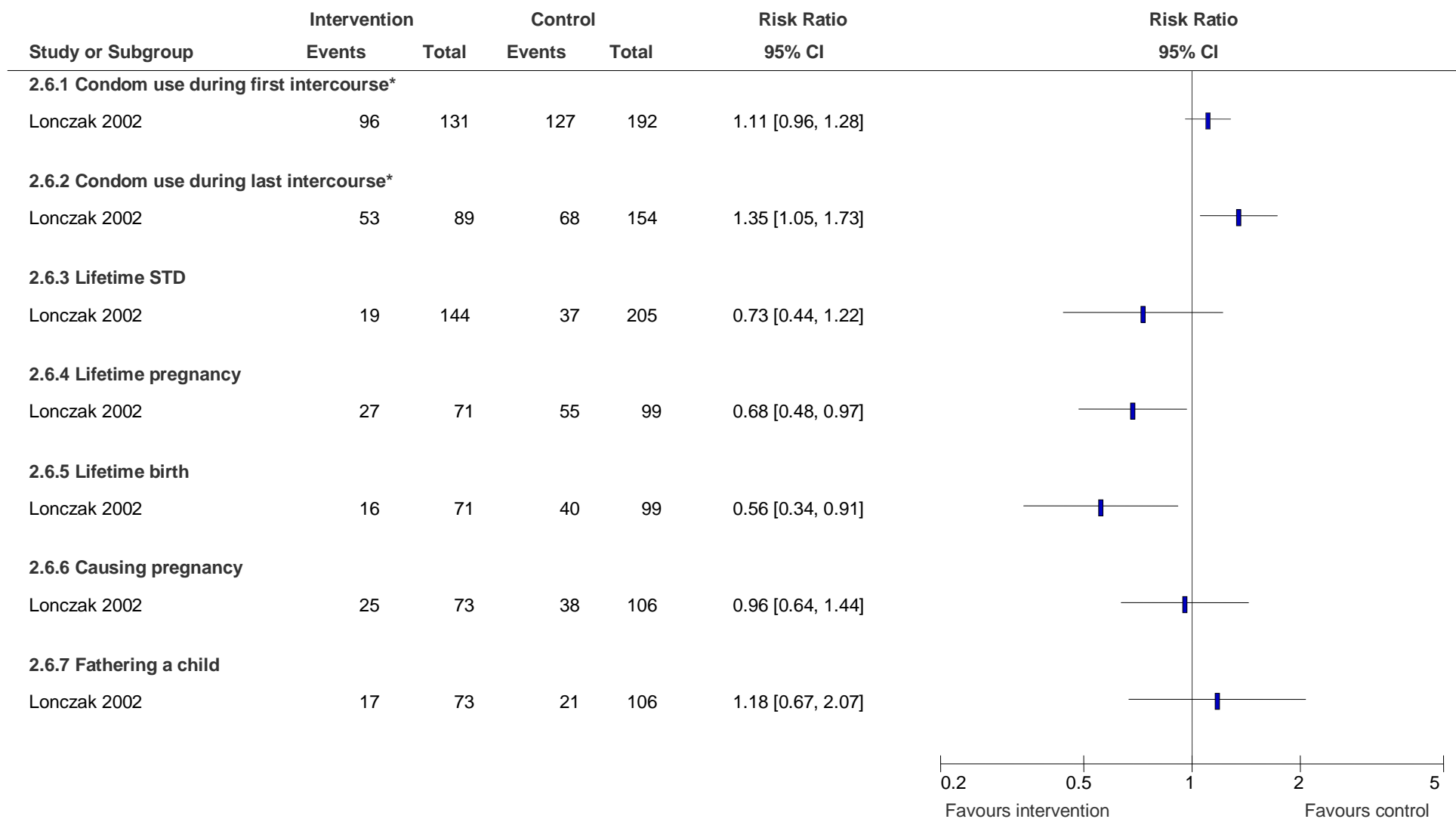


Figure 17. SSDP: Intervention effects at age 18 (Hawkins et al., 1999; NRCT +)



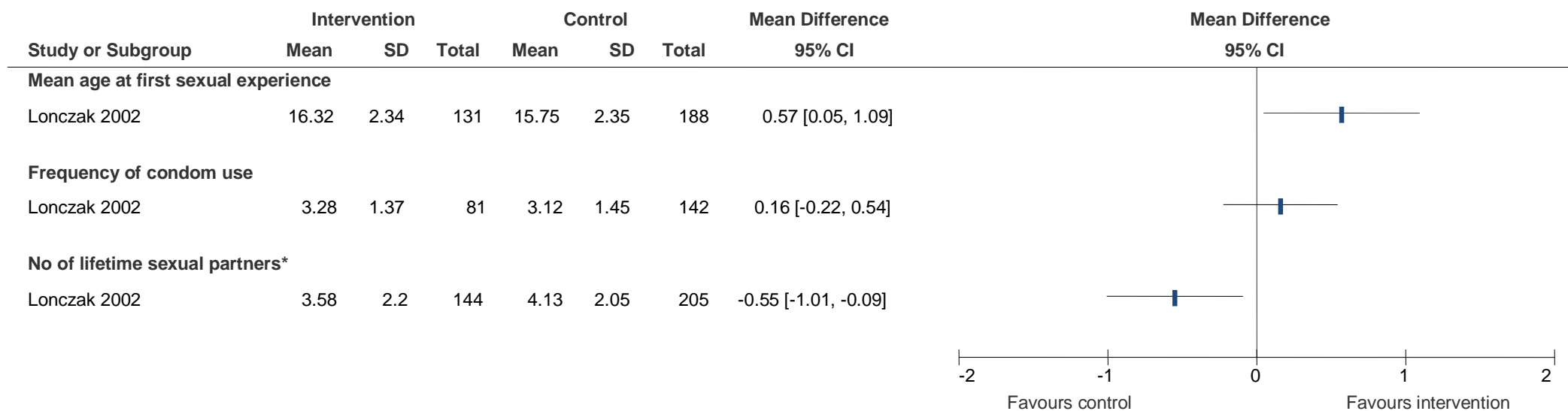
*Intervention effects reversed (i.e. direction favours intervention rather than control as indicated)

Figure 18. SSDP: Intervention effects at age 21 (Hawkins et al., 2005; NRCT +)



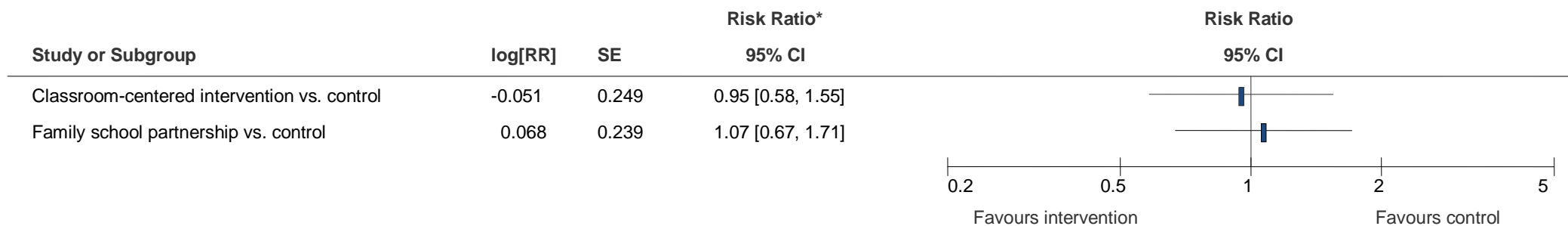
*Intervention effects reversed (i.e. direction favours intervention rather than control as indicated)

Figure 19. SSDP: Intervention effects at age 21 - dichotomous (Lonczak et al., 2002; NRCT +)



*Intervention effects reversed (i.e. direction favours intervention rather than control as indicated)

Figure 20. SSDP: Intervention effects at age 21 - continuous (Lonczak et al., 2002; NRCT +)



*Adjusted for age, sex, family type, teacher-rated total problems, parent management, and family history of drug, alcohol, or tobacco use

Figure 21. Developmental drug prevention programme: Unsupervised alcohol use (Furr-Holden et al., 2004; RCT +)