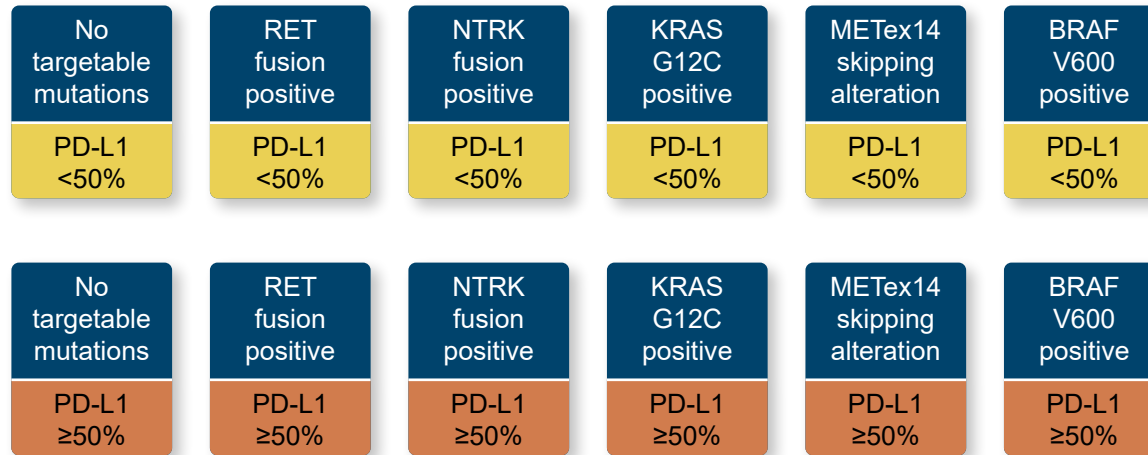


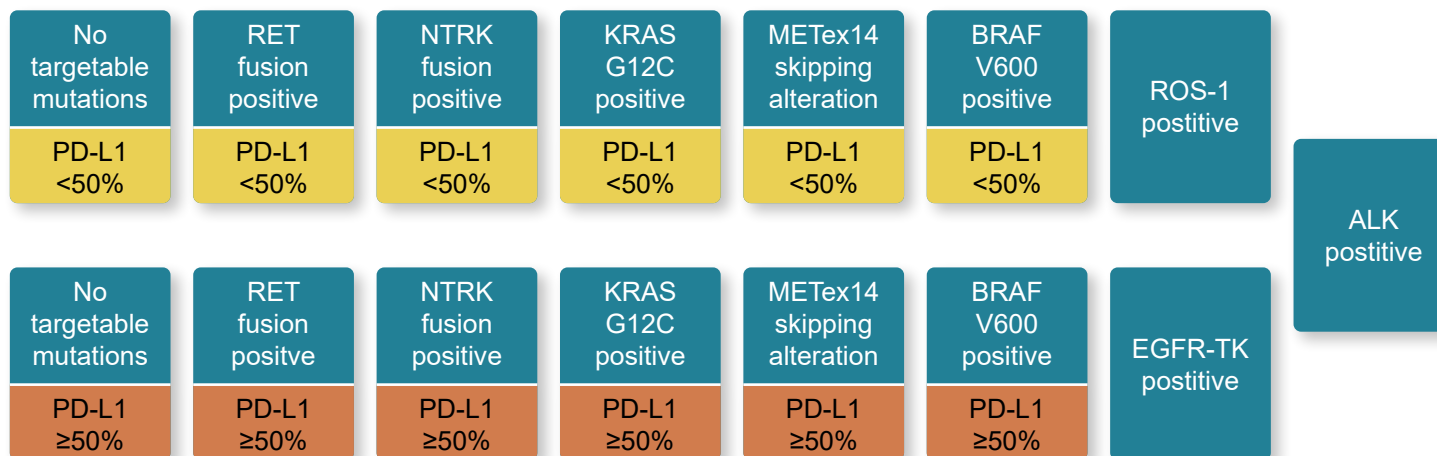
# Systemic anti-cancer therapy for advanced non-small-cell lung cancer: treatment options

March 2024

## Squamous pathways



## Non-squamous pathways



Click on any of the **starting points** to go to the page showing that care pathway



To return to this page, click on the home icon at the top left of any page



Grey box: funded by Cancer Drugs Fund



Red arrows indicate disease progression



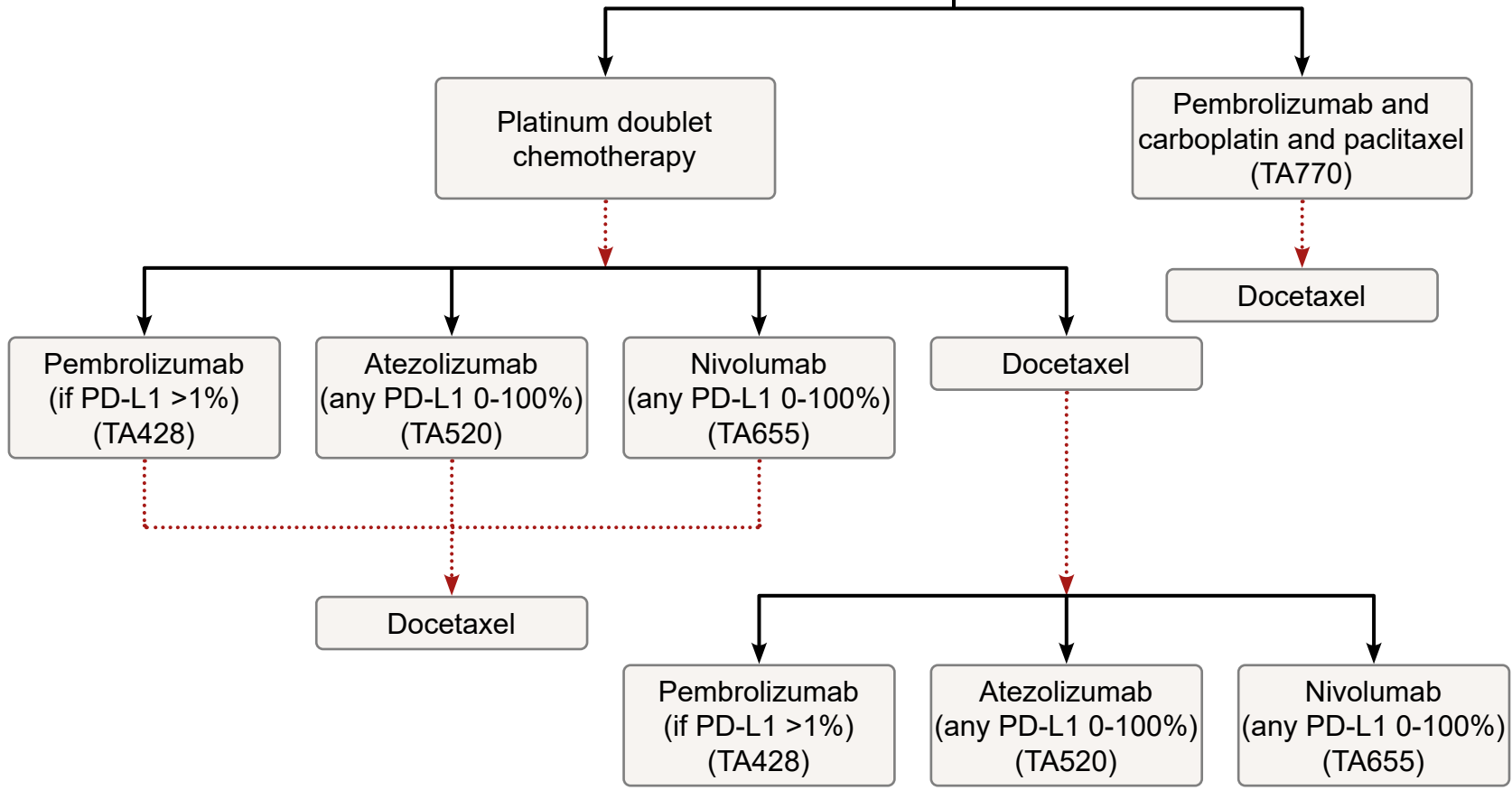
Blue arrows indicate NHSE policy





Base all treatment choices on [shared decision making](#). Think about enrolment into a clinical trial as an option at each step.

No targetable mutations  
PD-L1 <50%



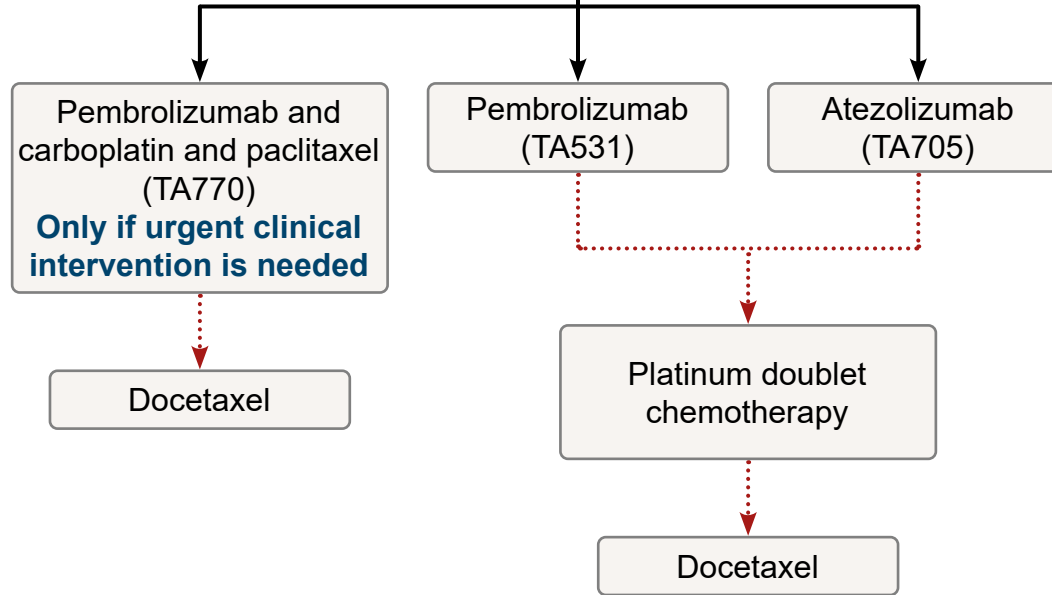
Cancer Drugs Fund  
TA000  
Disease progression  
NHSE policy



Base all treatment choices on [shared decision making](#). Think about enrolment into a clinical trial as an option at each step.

No targetable mutations

PD-L1 ≥50%



Cancer Drugs Fund

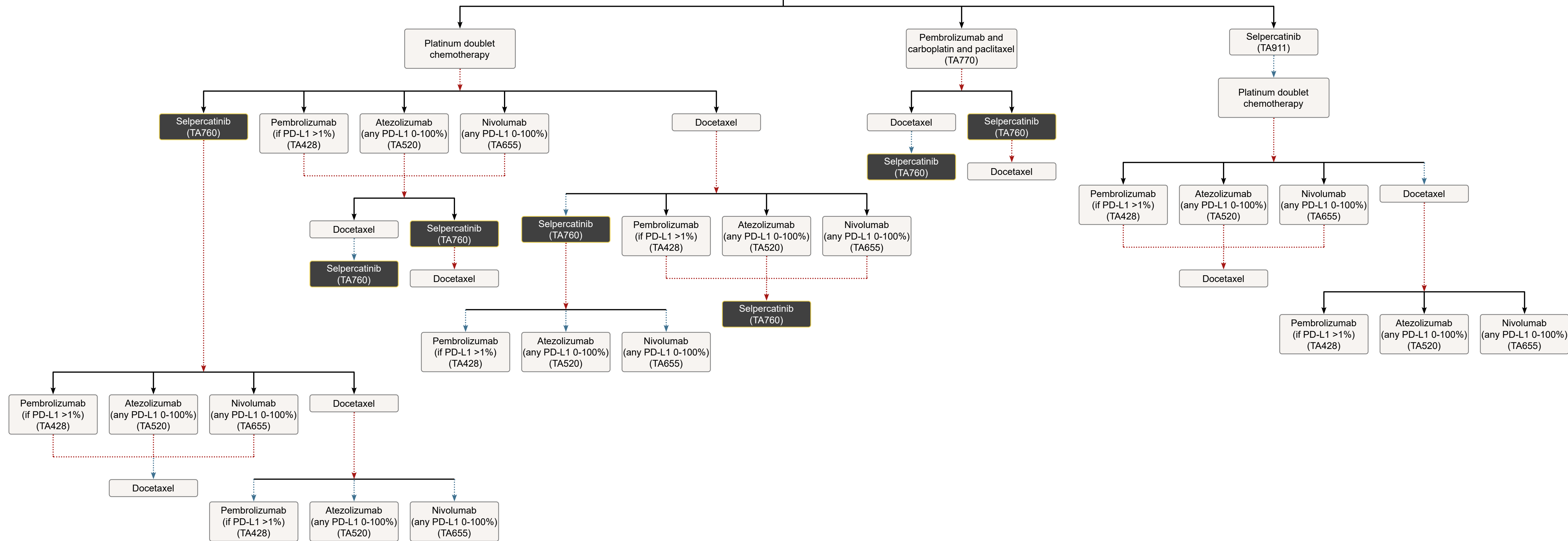
**TA000**

Disease progression

NHSE policy



Base all treatment choices on [shared decision making](#). Think about enrolment into a clinical trial as an option at each step.



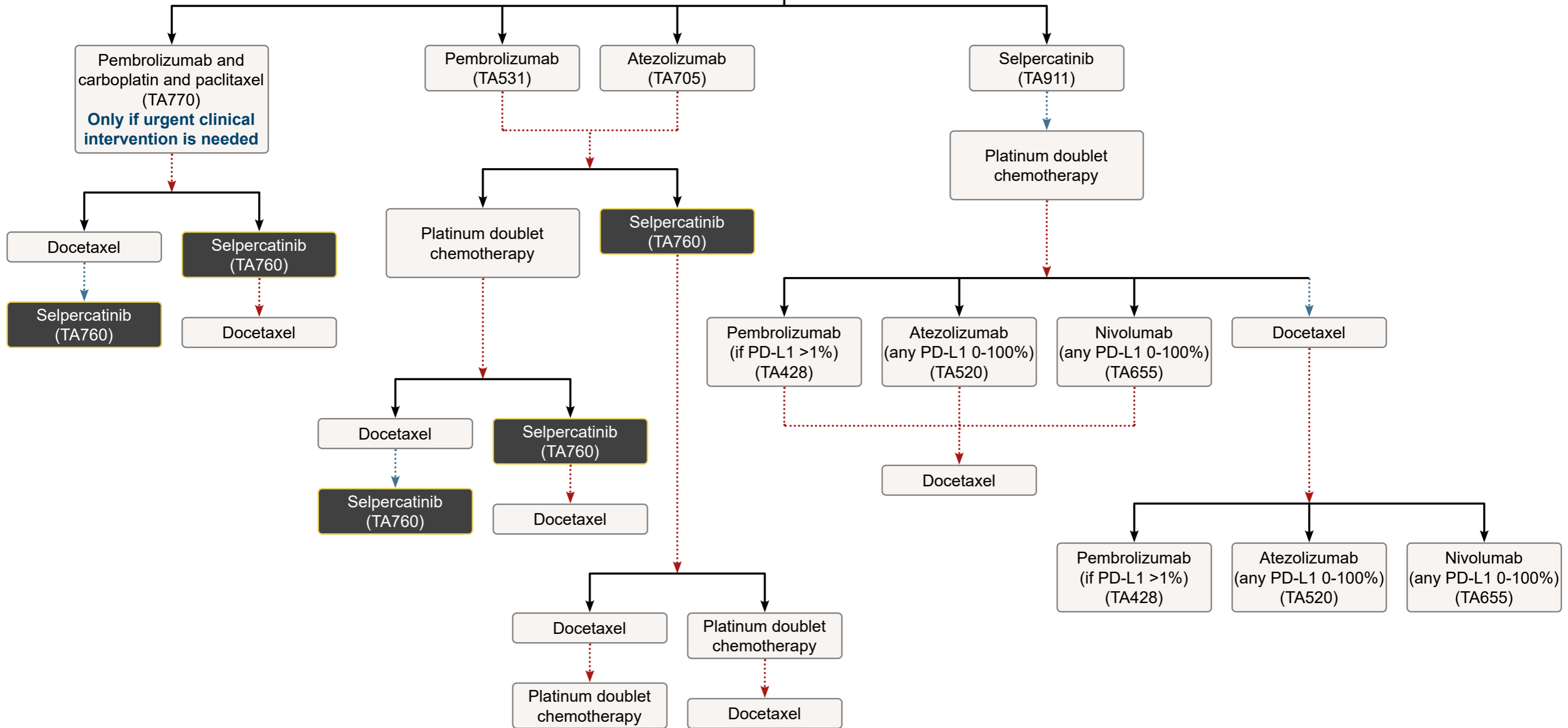
Cancer Drugs Fund  
TA000  
Disease progression  
NHSE policy



RET fusion positive

PD-L1 ≥50%

Base all treatment choices on [shared decision making](#). Think about enrolment into a clinical trial as an option at each step.



Cancer Drugs Fund

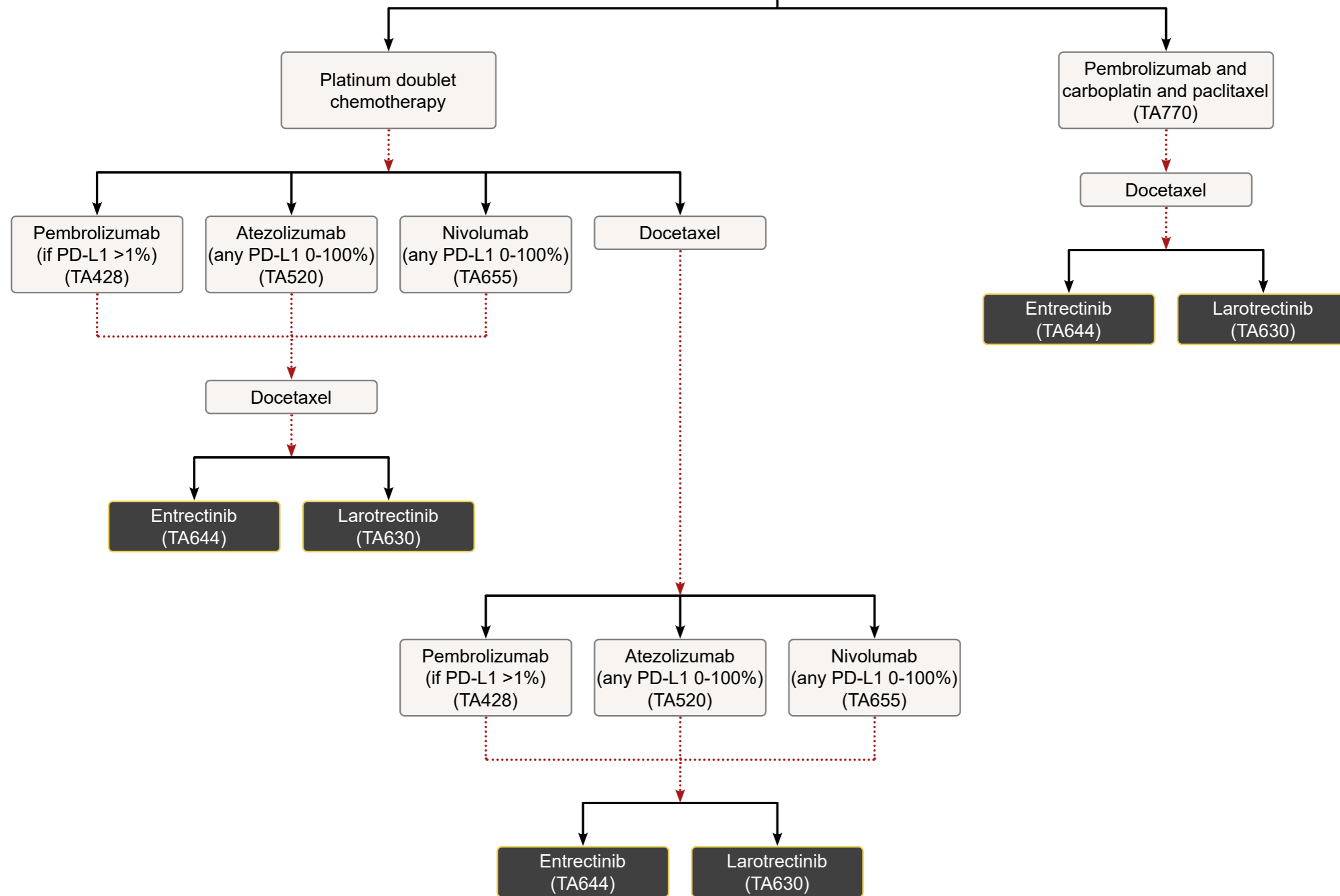
**TA000**

Disease progression →

NHSE policy →



Base all treatment choices on [shared decision making](#). Think about enrolment into a clinical trial as an option at each step.



Cancer Drugs Fund

TA000

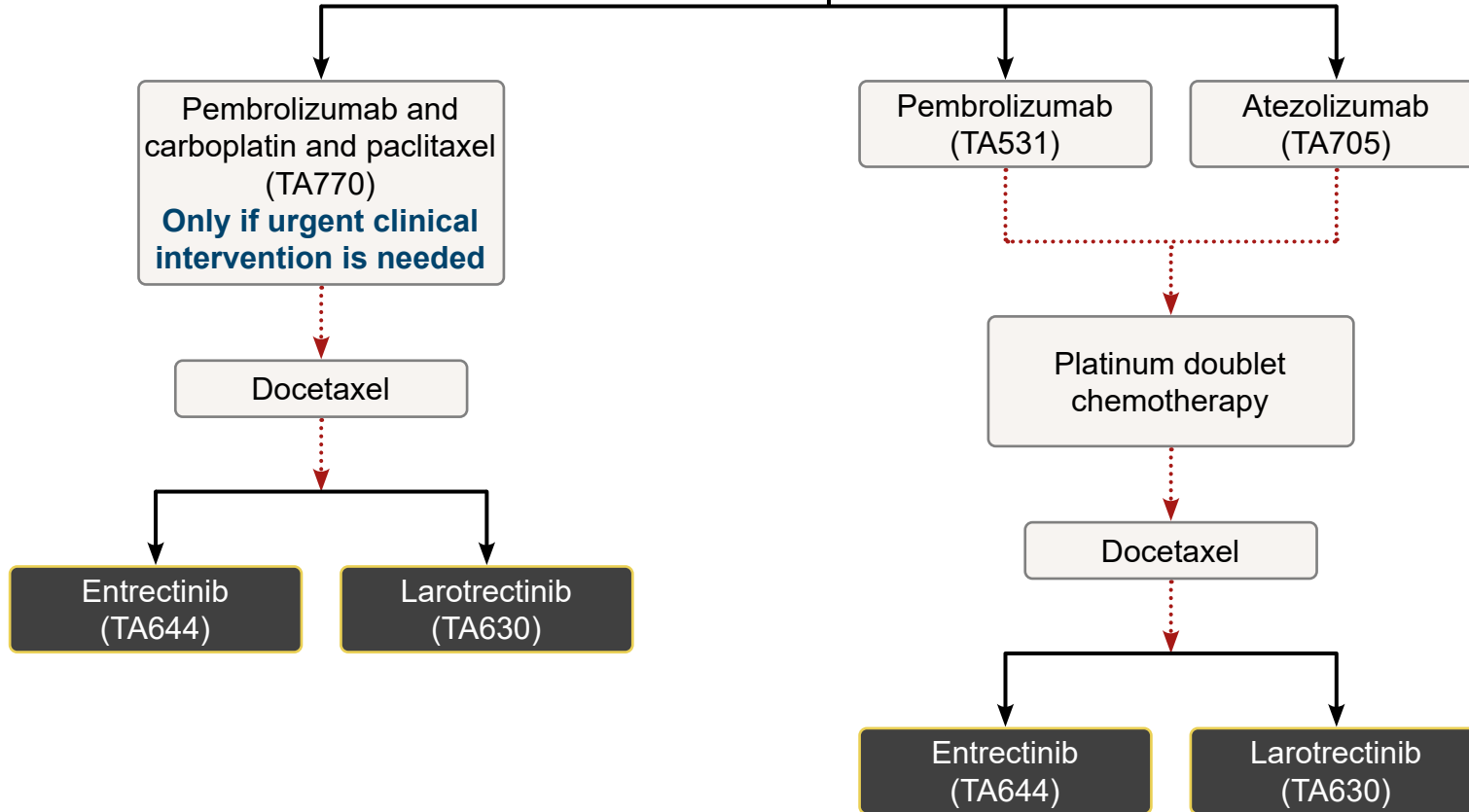
Disease progression

NHSE policy

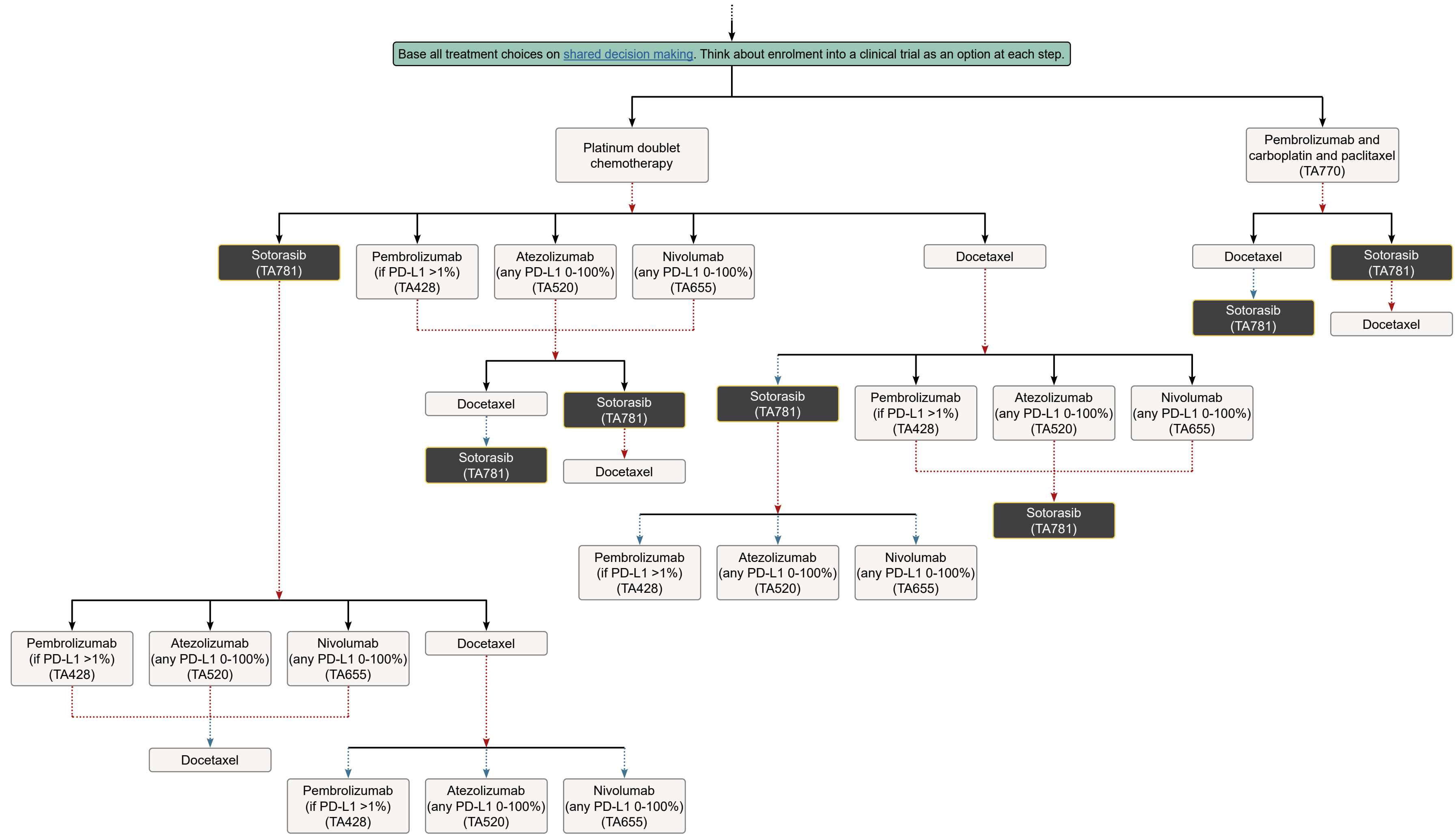


Base all treatment choices on [shared decision making](#). Think about enrolment into a clinical trial as an option at each step.

NTRK fusion positive  
PD-L1 ≥50%



Cancer Drugs Fund  
TA000  
Disease progression  
NHSE policy

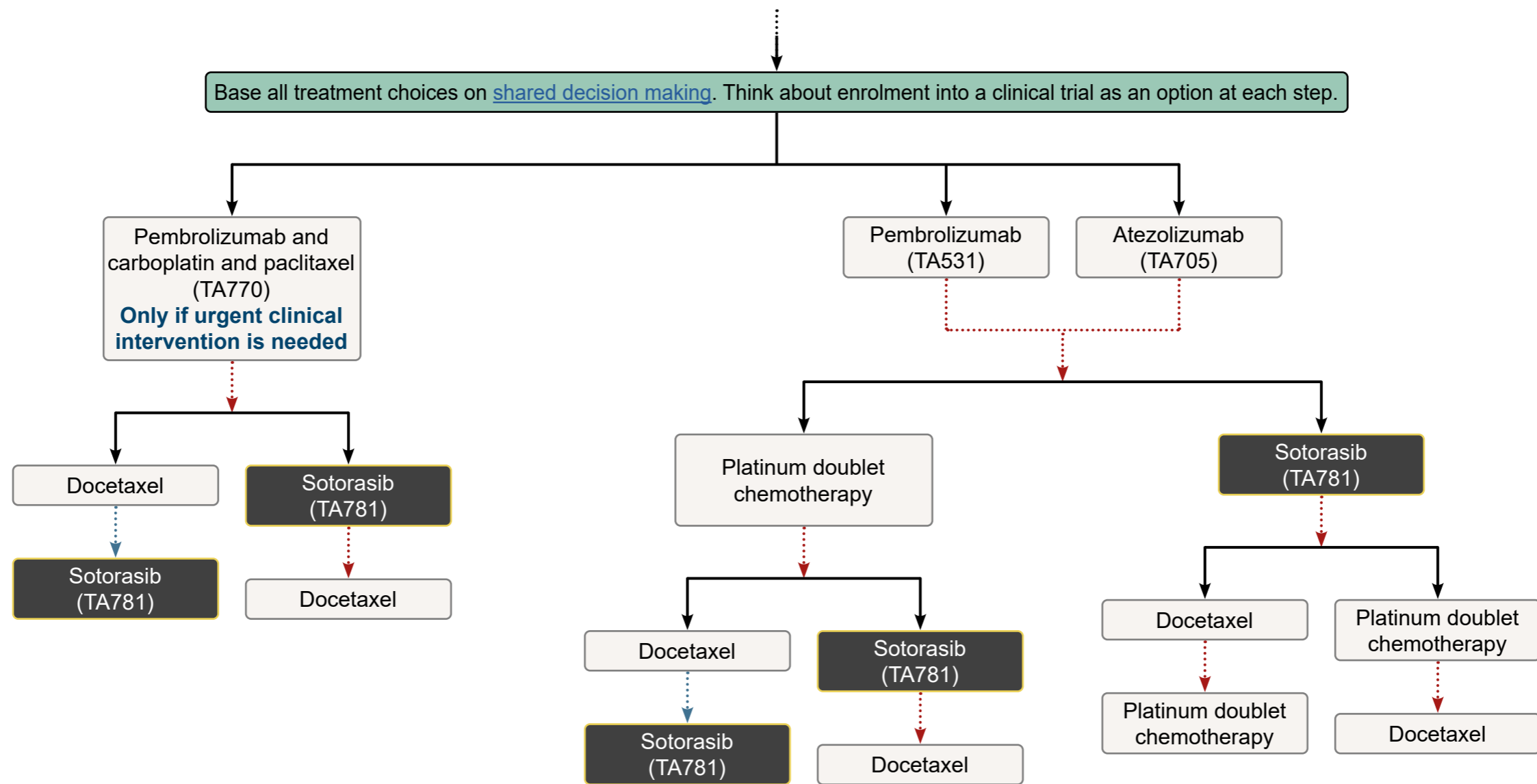






KRAS  
G12C  
positive

PD-L1  
≥50%



Cancer Drugs Fund

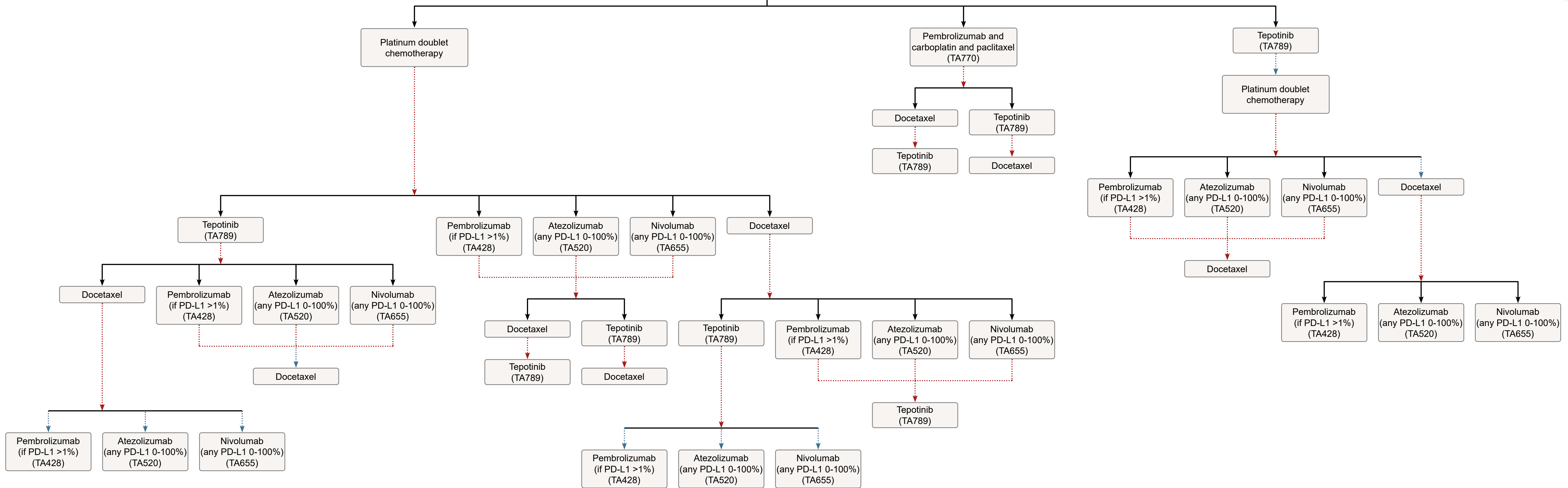
TA000

Disease progression

NHSE policy



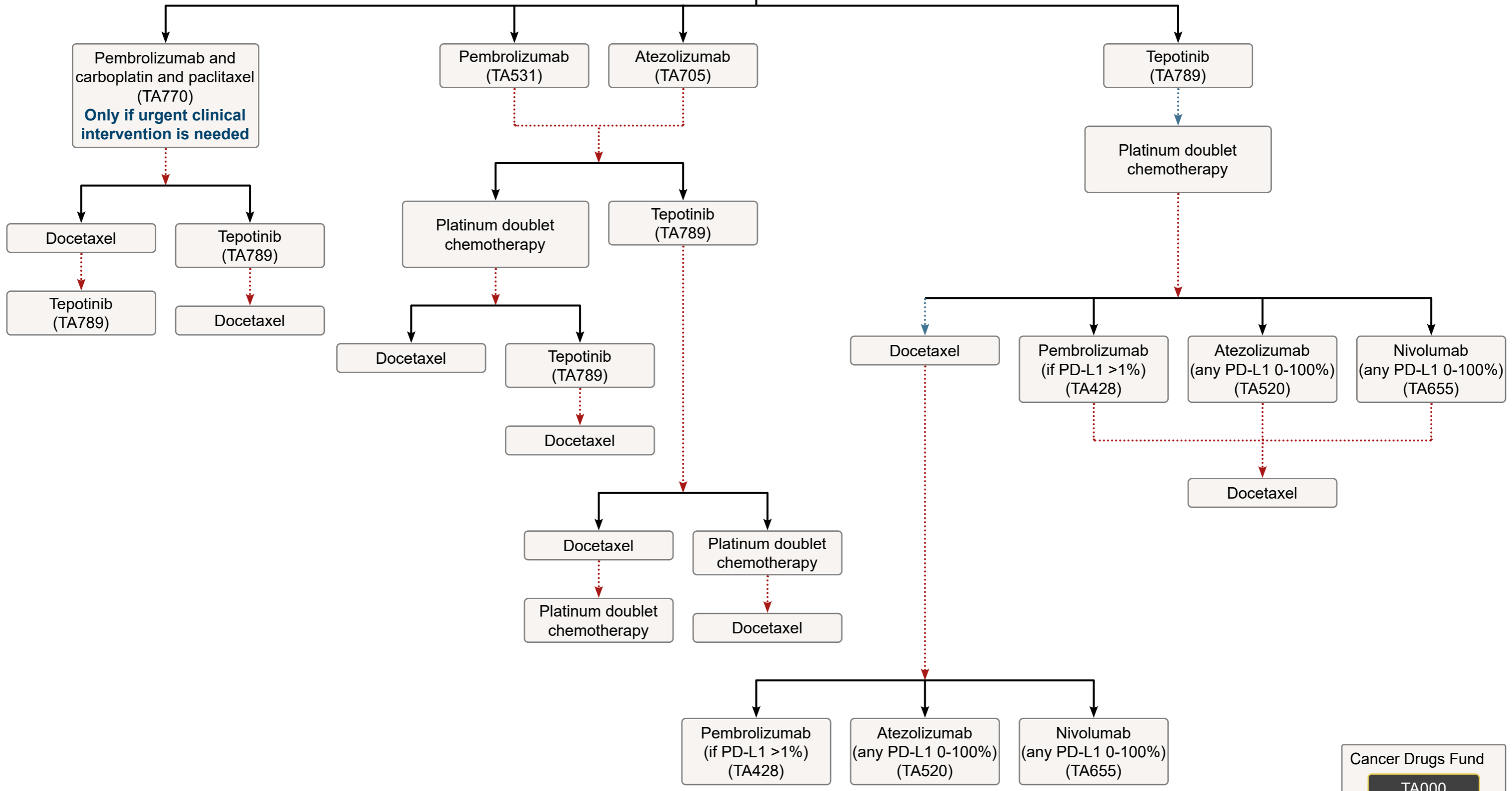
Base all treatment choices on [shared decision making](#). Think about enrolment into a clinical trial as an option at each step.



Cancer Drugs Fund  
TA000  
Disease progression  
NHSE policy



Base all treatment choices on [shared decision making](#). Think about enrolment into a clinical trial as an option at each step.



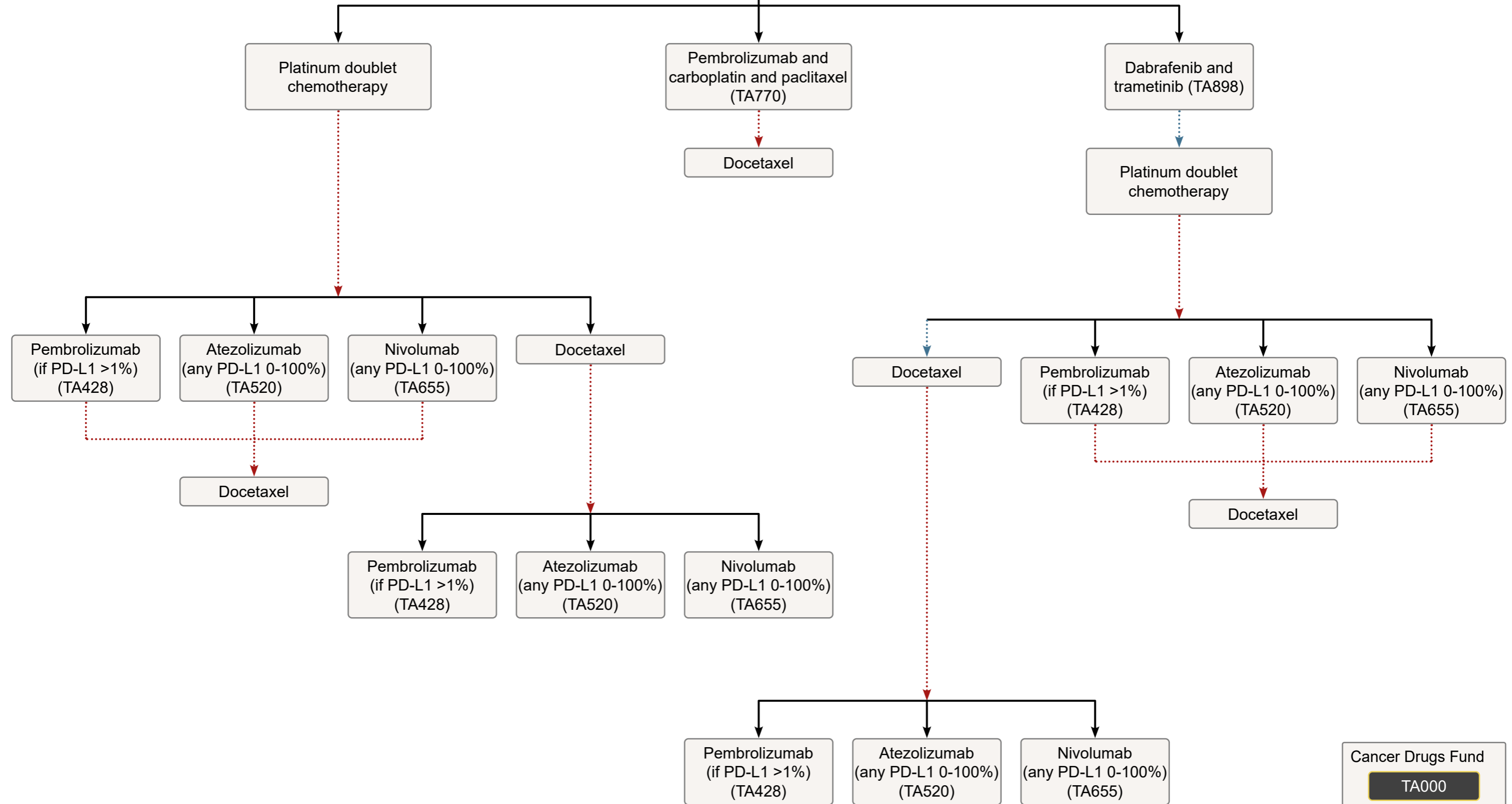
Cancer Drugs Fund  
**TA000**  
 Disease progression  
 NHSE policy



BRAF V600 positive

PD-L1 <50%

Base all treatment choices on [shared decision making](#). Think about enrolment into a clinical trial as an option at each step.



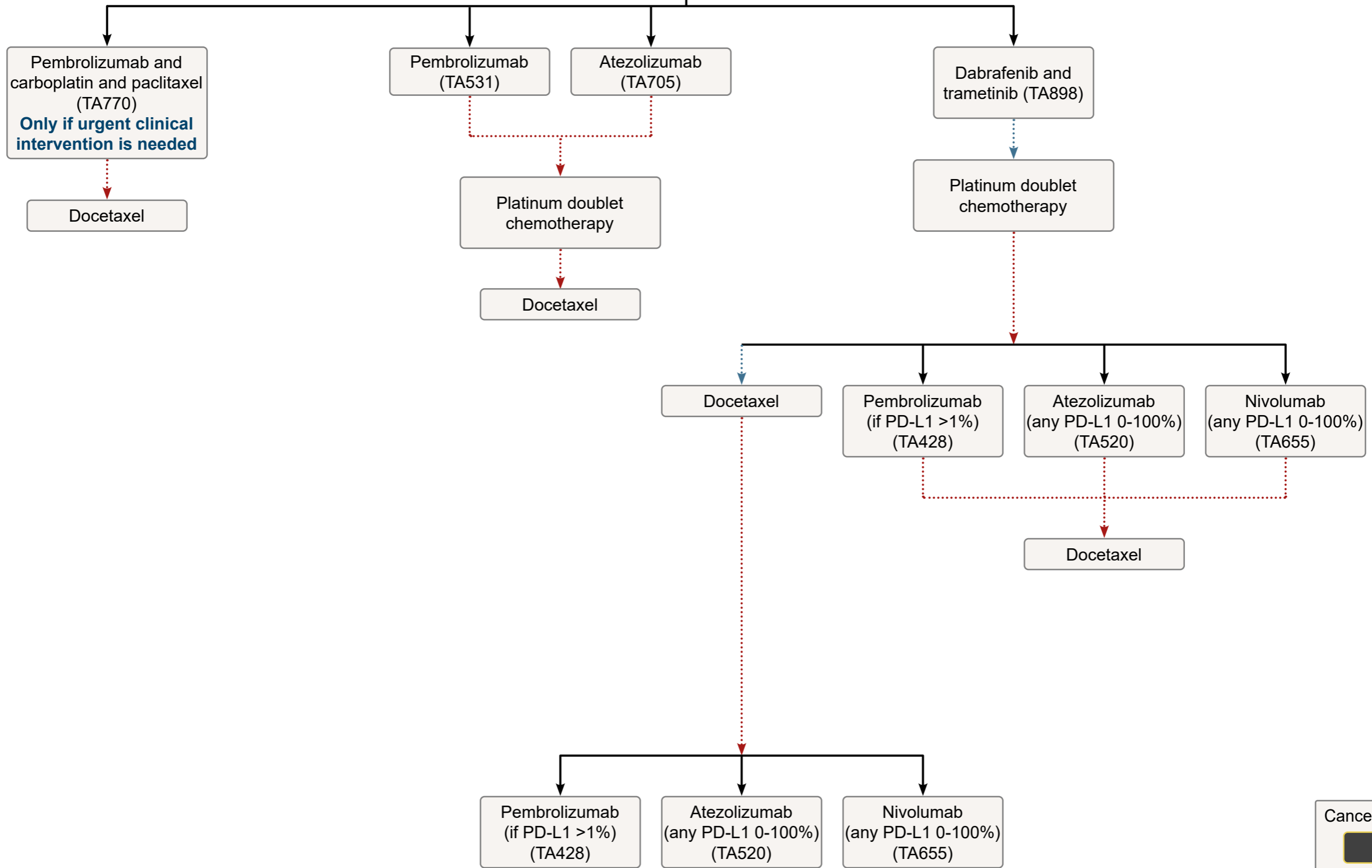
Cancer Drugs Fund  
**TA000**  
 Disease progression  
 NHSE policy



BRAF V600 positive

PD-L1 ≥50%

Base all treatment choices on [shared decision making](#). Think about enrolment into a clinical trial as an option at each step.



Cancer Drugs Fund

**TA000**

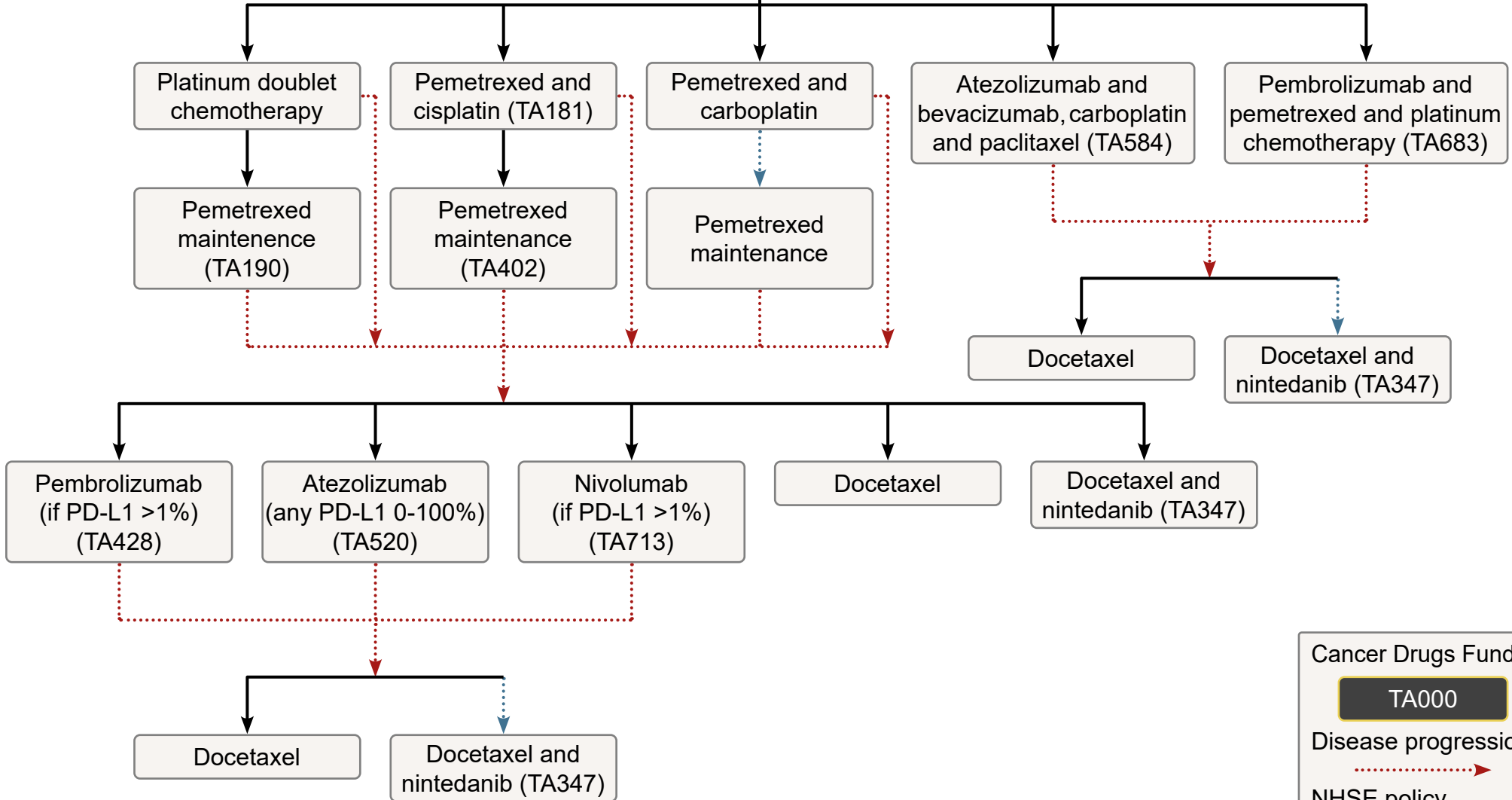
Disease progression →

NHSE policy →



Base all treatment choices on [shared decision making](#). Think about enrolment into a clinical trial as an option at each step.

No targetable mutations  
PD-L1 <50%

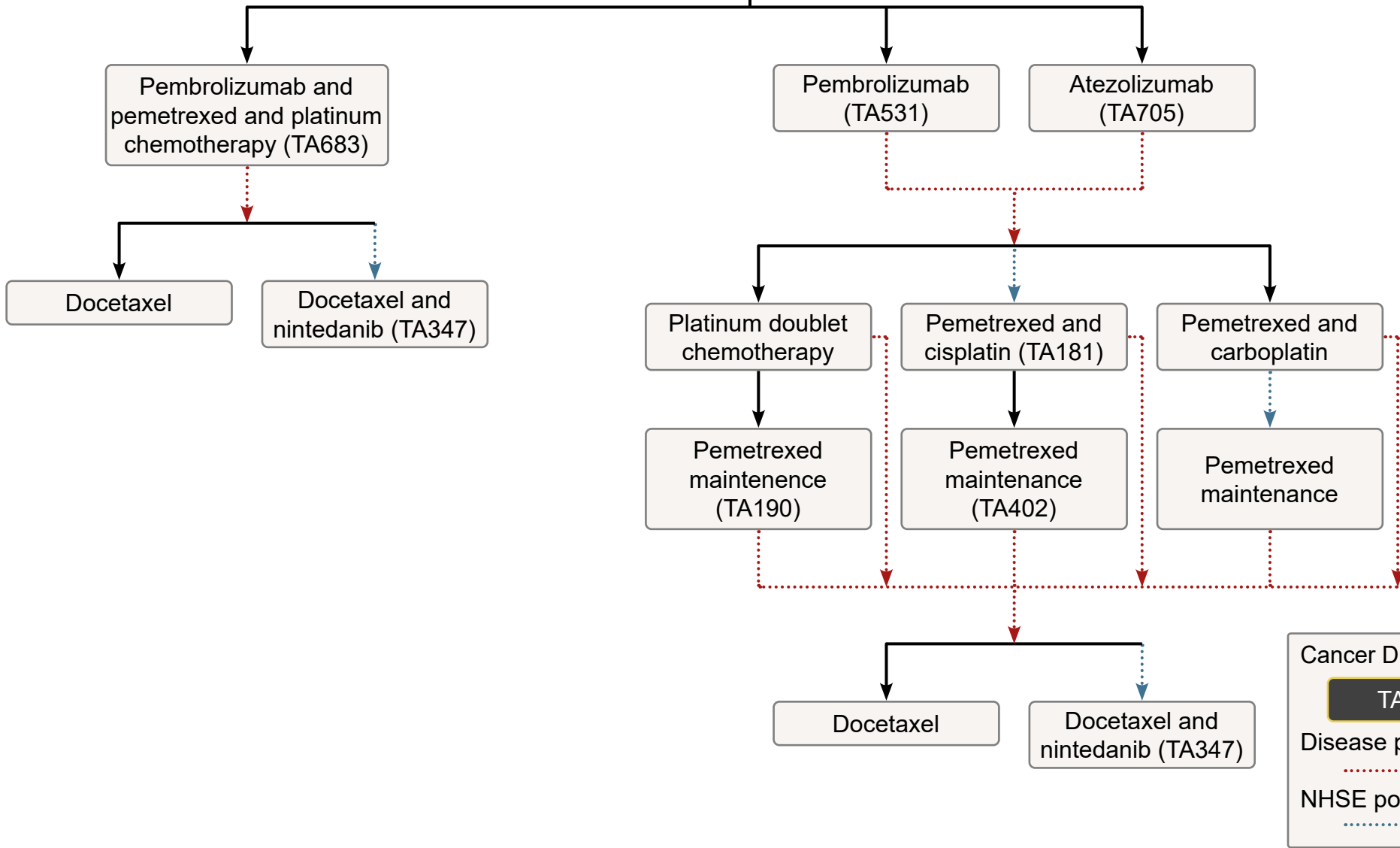


Cancer Drugs Fund  
**TA000**  
 Disease progression  
 NHSE policy



Base all treatment choices on [shared decision making](#). Think about enrolment into a clinical trial as an option at each step.

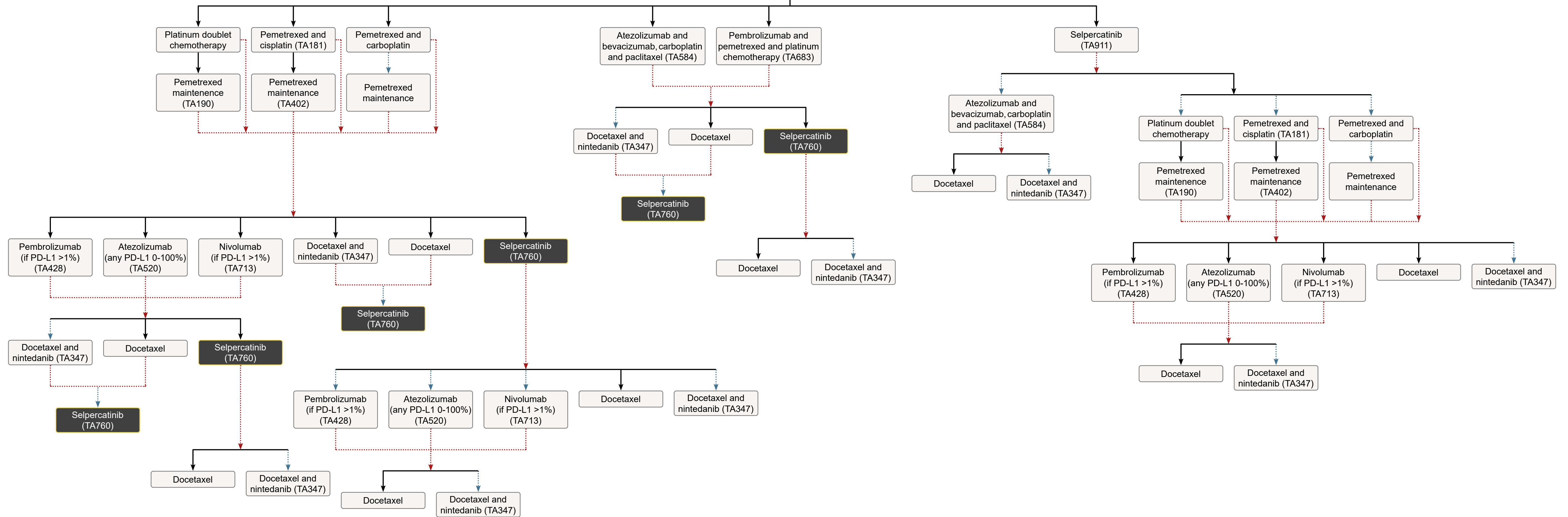
No targetable mutations  
PD-L1 ≥50%



Cancer Drugs Fund  
TA000  
Disease progression  
NHSE policy



Base all treatment choices on [shared decision making](#). Think about enrolment into a clinical trial as an option at each step.

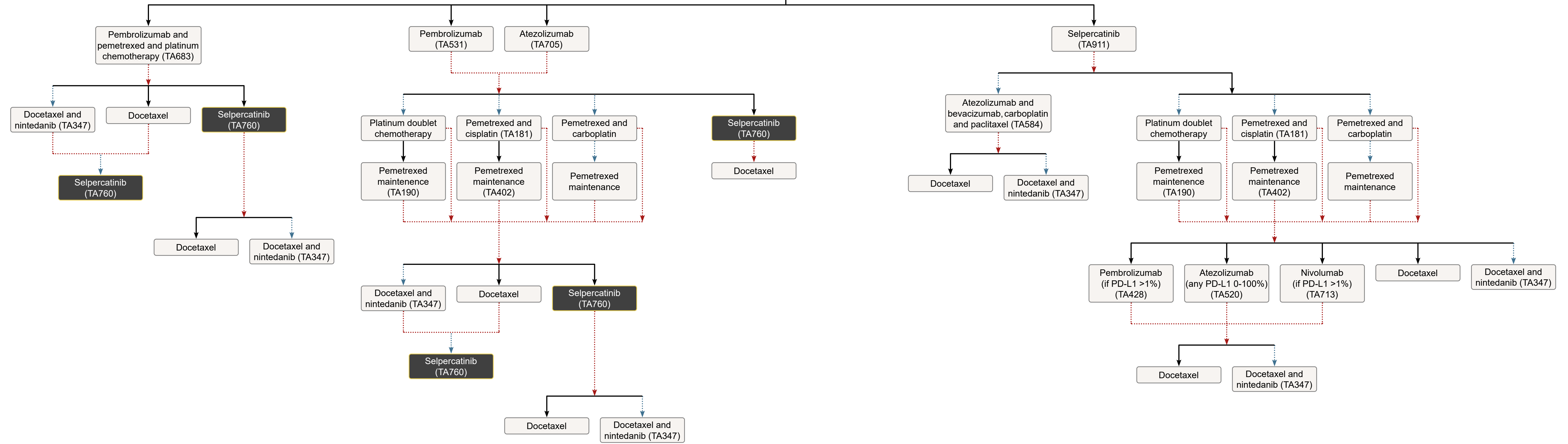


Cancer Drugs Fund  
TA000  
Disease progression  
NHSE policy





Base all treatment choices on [shared decision making](#). Think about enrolment into a clinical trial as an option at each step.

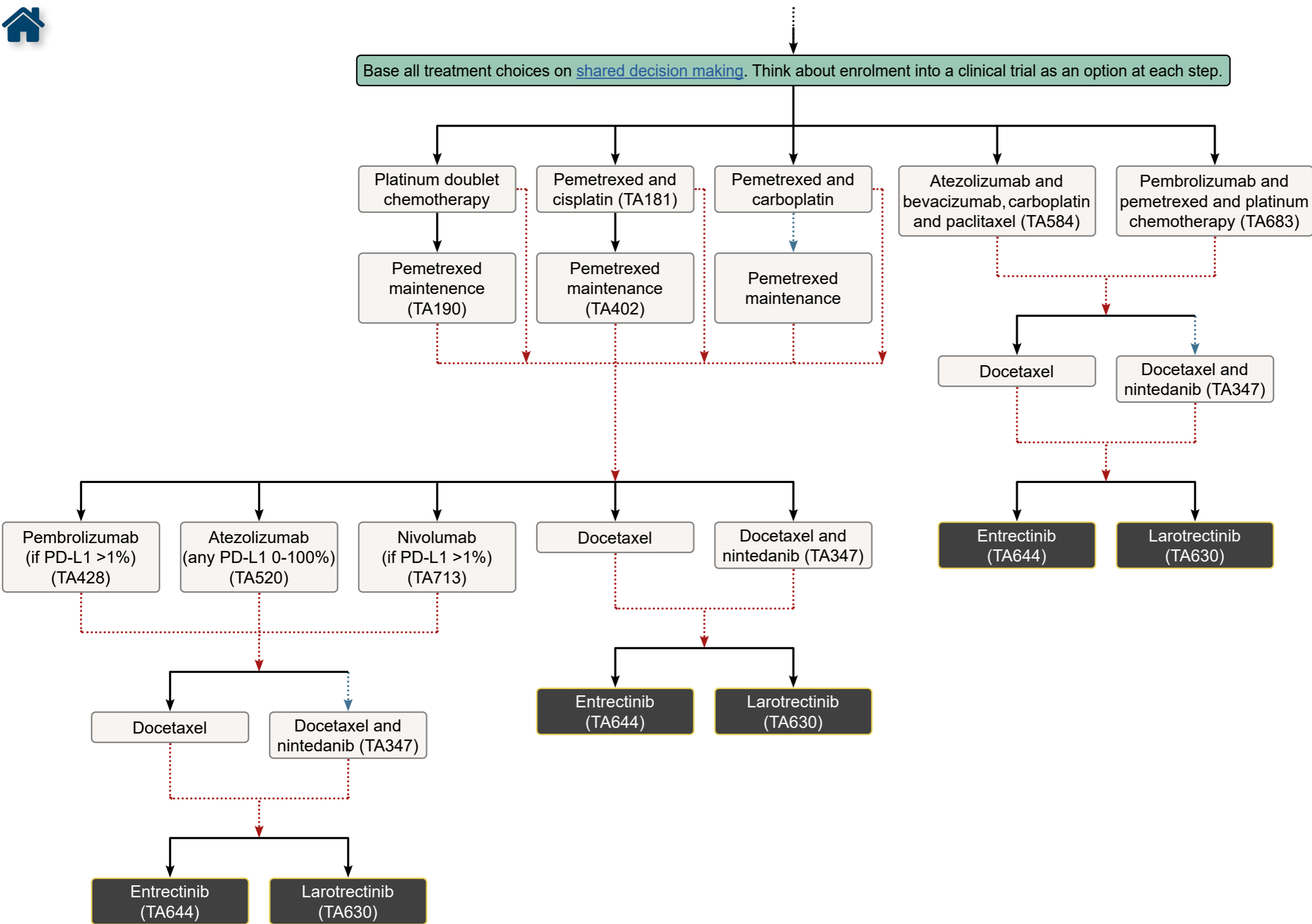


Cancer Drugs Fund  
TA000  
Disease progression  
NHSE policy



NTRK fusion positive

PD-L1 <50%



Cancer Drugs Fund

**TA000**

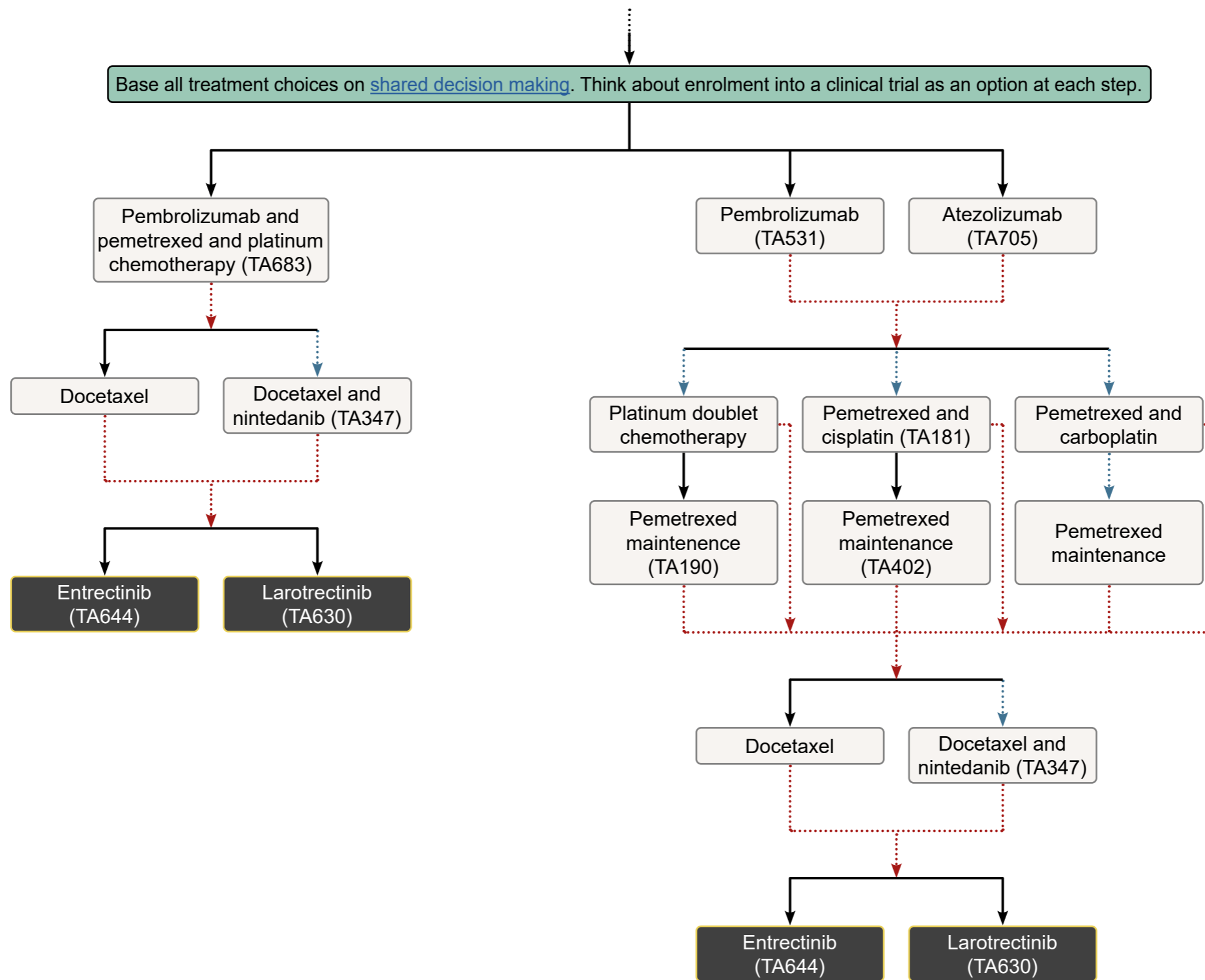
Disease progression

NHSE policy



NTRK fusion positive

PD-L1 ≥50%

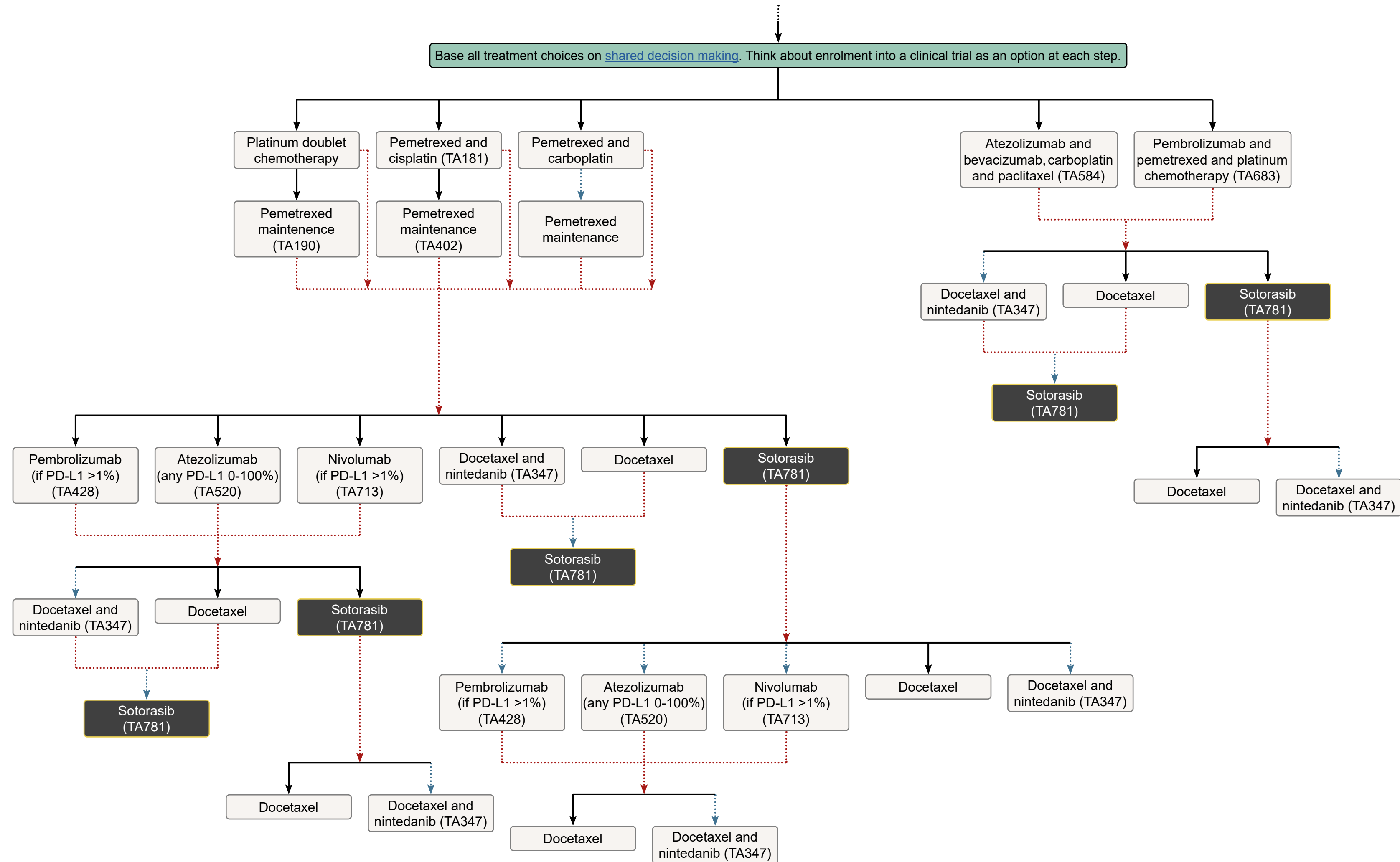


Cancer Drugs Fund

TA000

Disease progression

NHSE policy

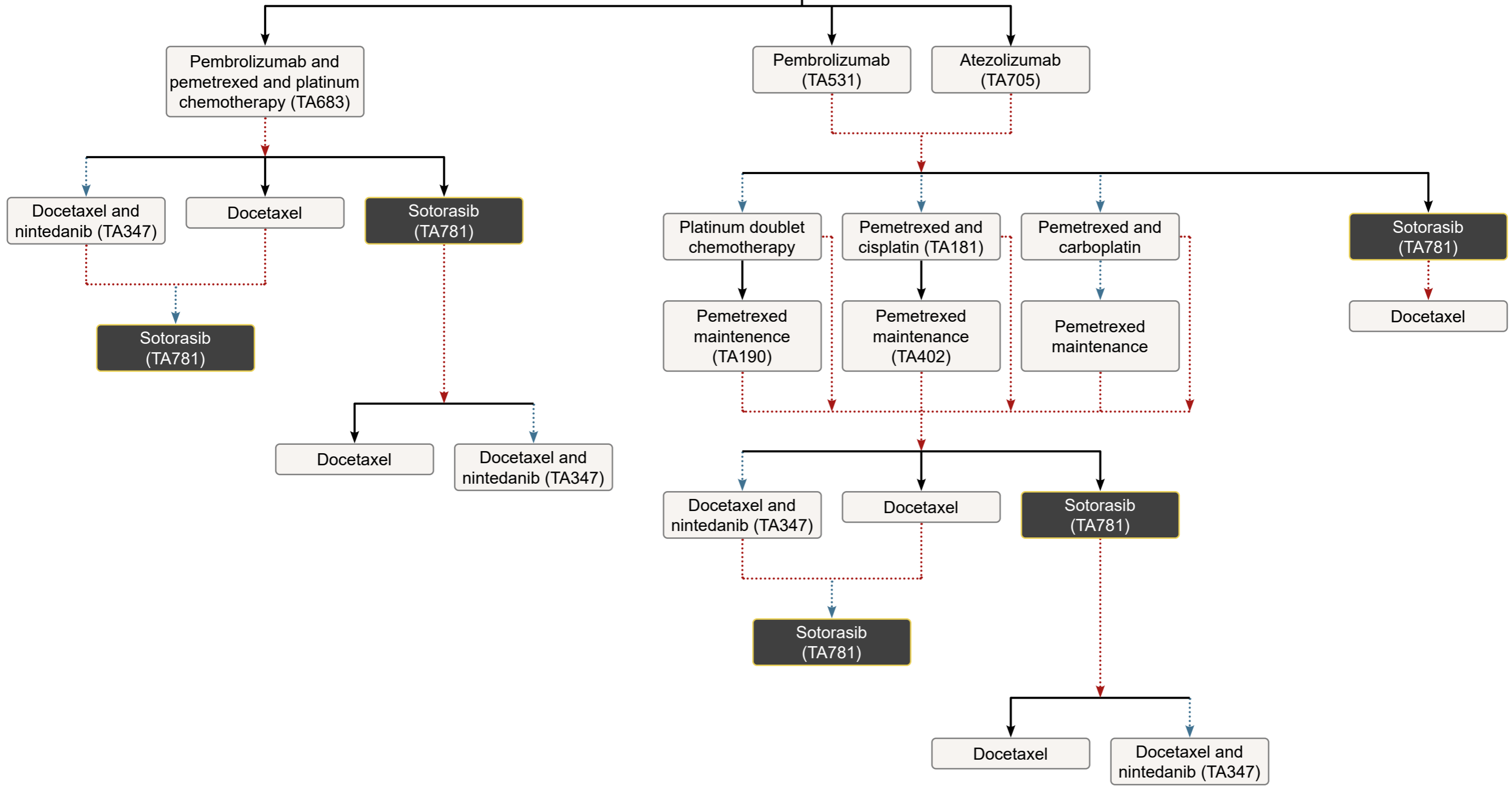




KRAS G12C positive

PD-L1 ≥50%

Base all treatment choices on [shared decision making](#). Think about enrolment into a clinical trial as an option at each step.



Cancer Drugs Fund

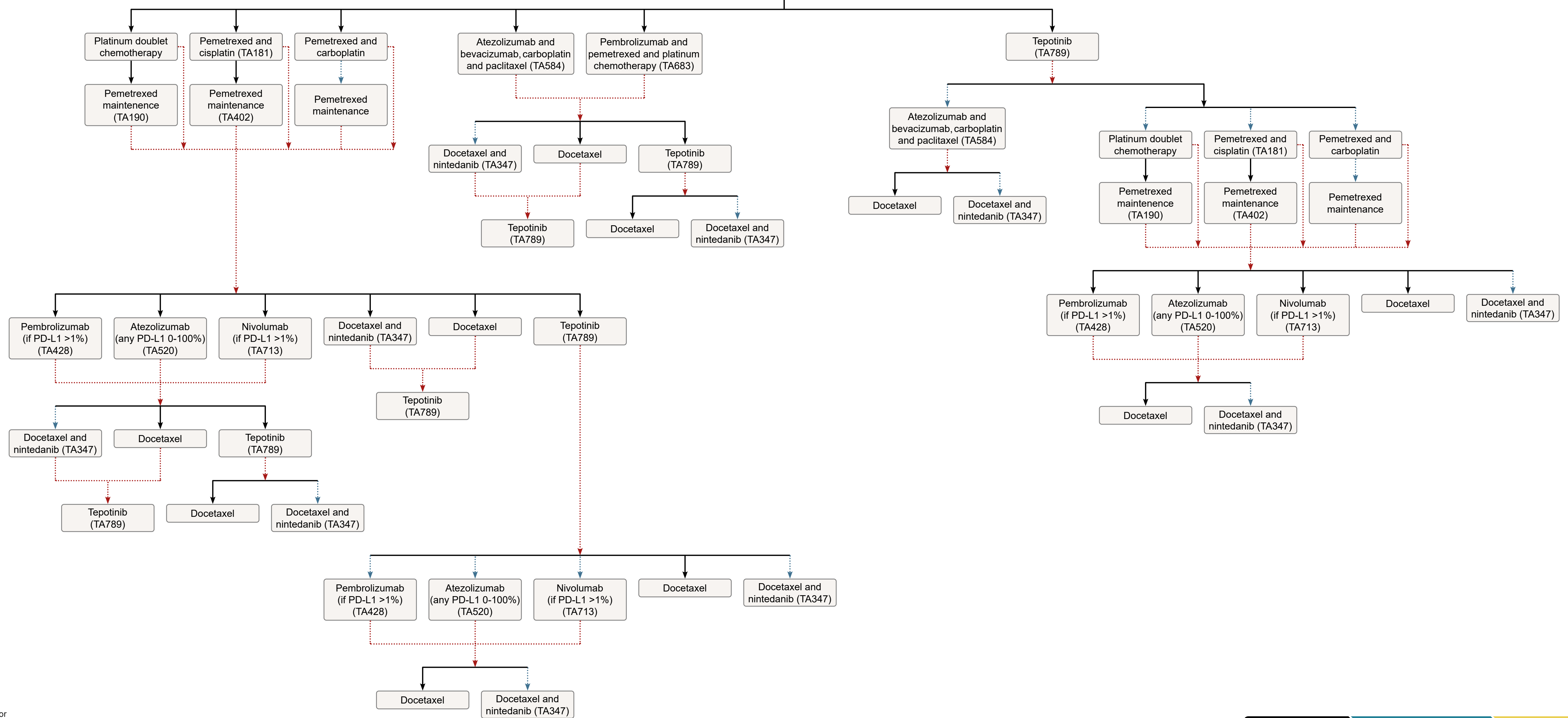
**TA000**

Disease progression

NHSE policy



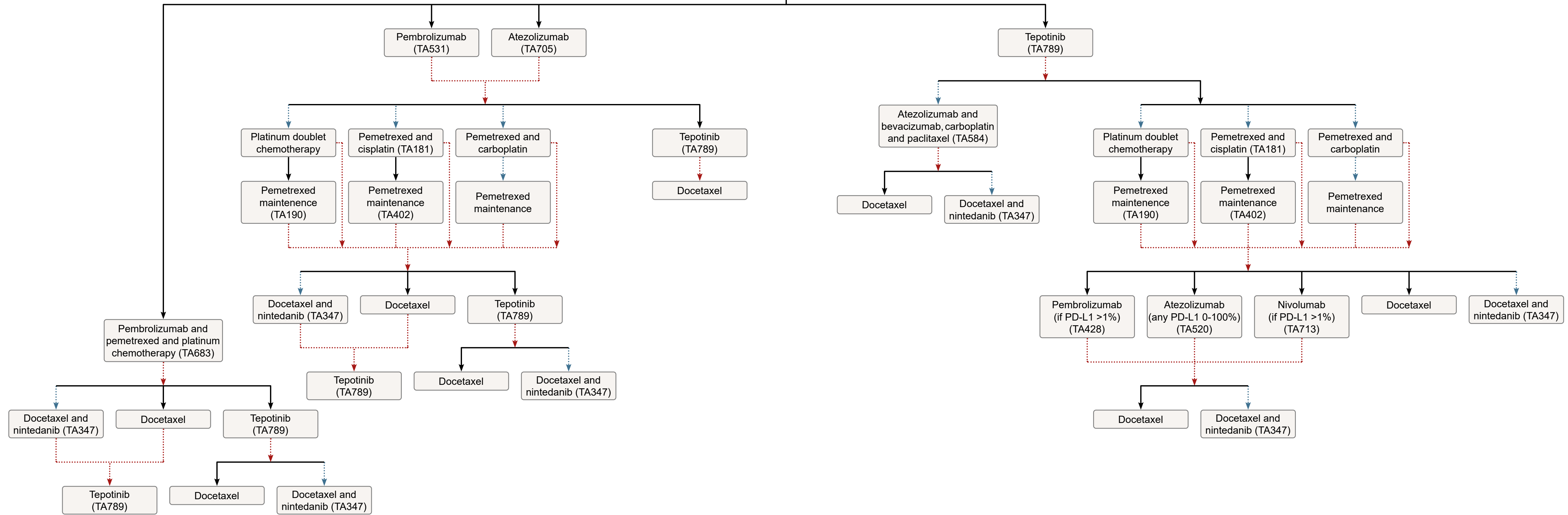
Base all treatment choices on [shared decision making](#). Think about enrolment into a clinical trial as an option at each step.



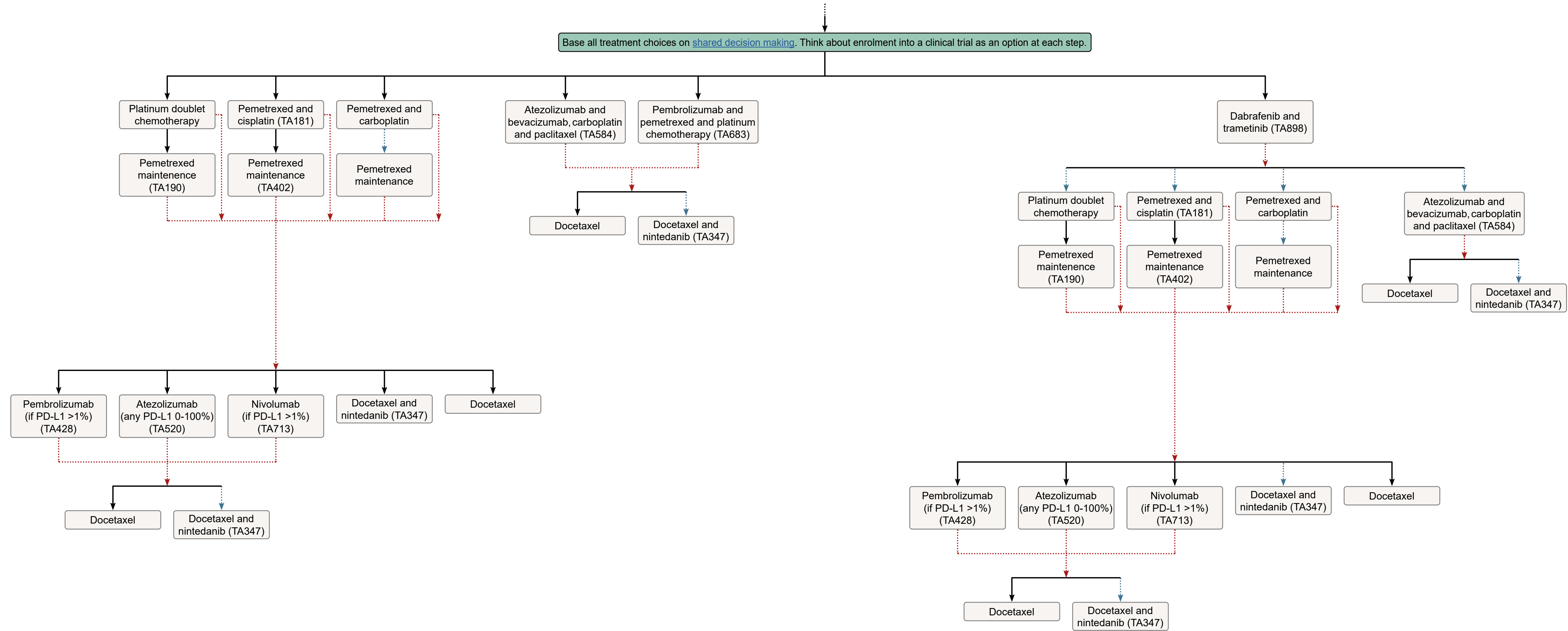
Cancer Drugs Fund  
**TA000**  
 Disease progression →  
 NHSE policy →



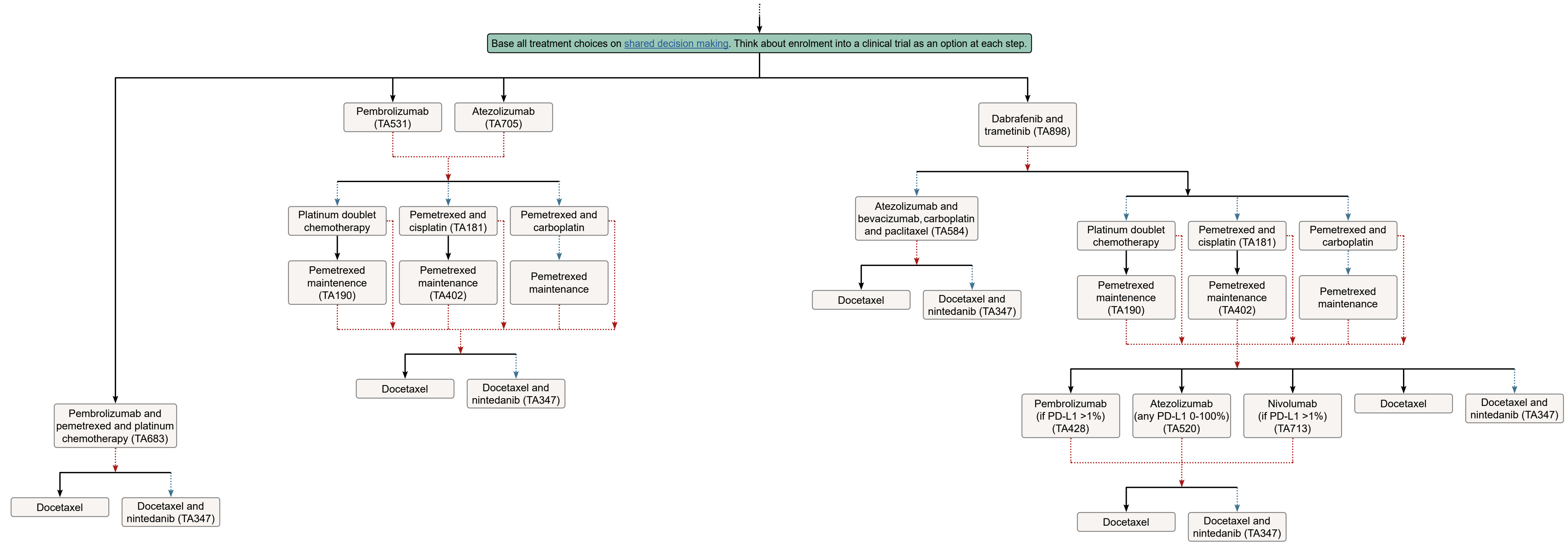
Base all treatment choices on [shared decision making](#). Think about enrolment into a clinical trial as an option at each step.





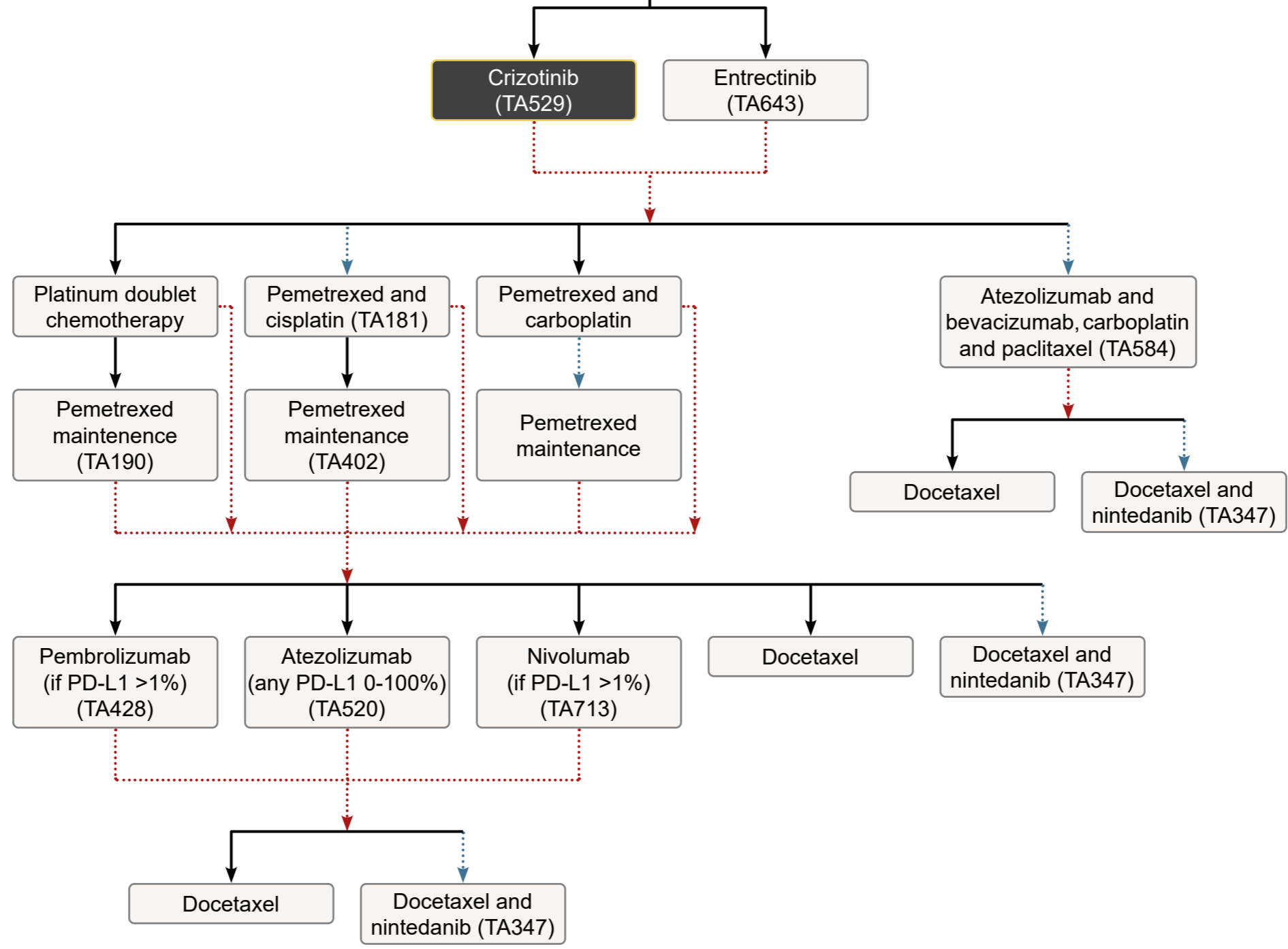




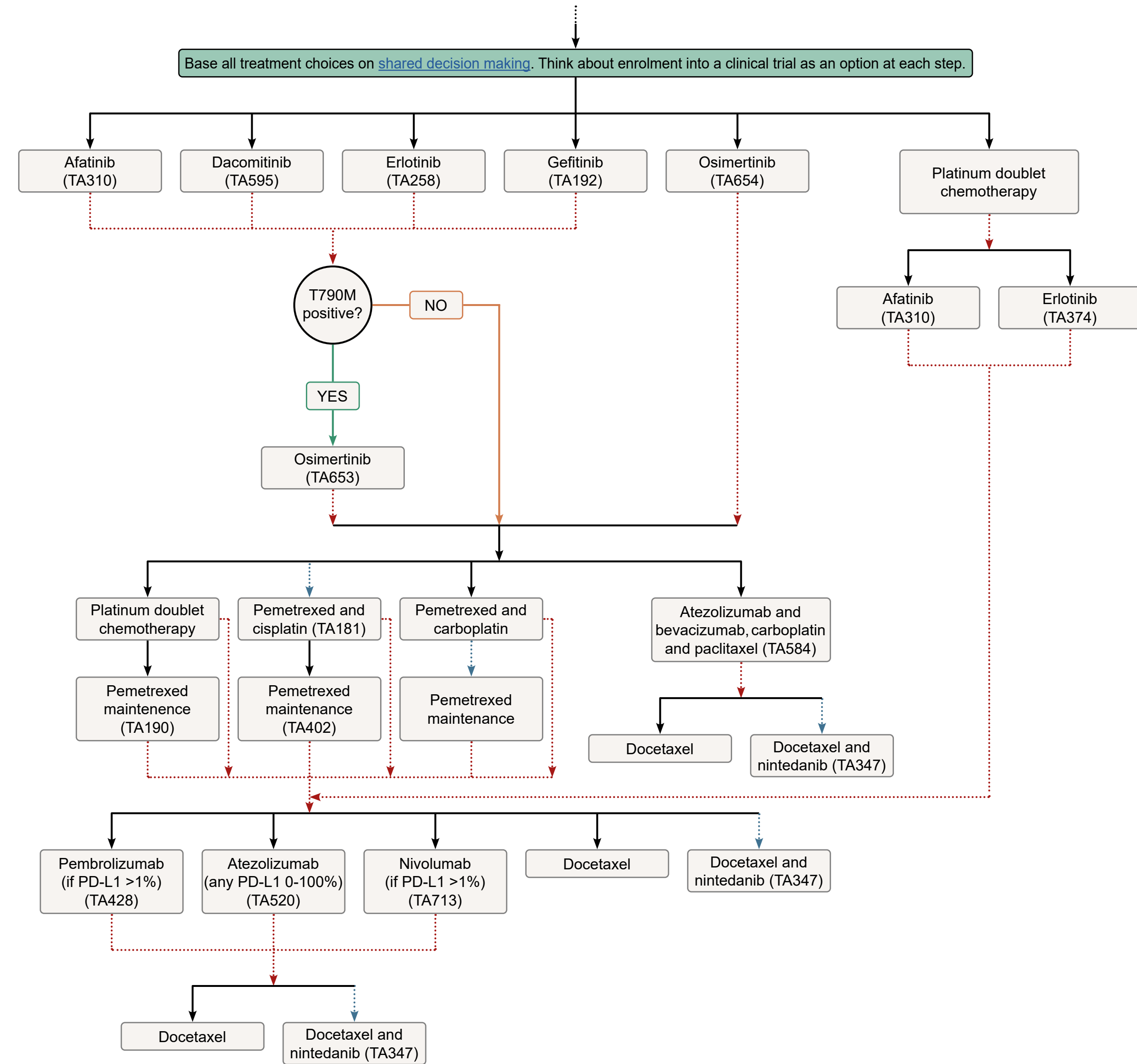




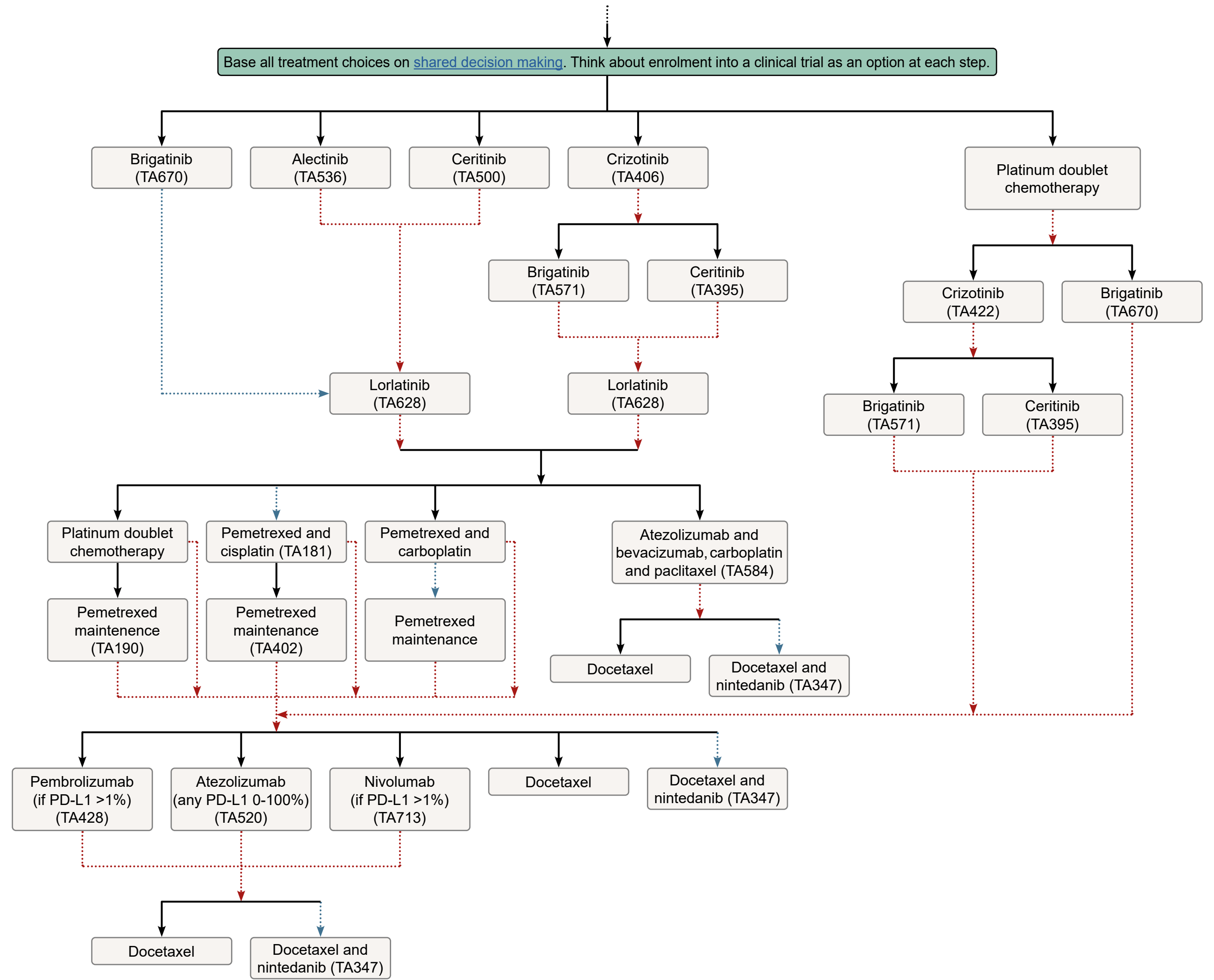
Base all treatment choices on [shared decision making](#). Think about enrolment into a clinical trial as an option at each step.



Cancer Drugs Fund  
**TA000**  
 Disease progression  
 NHSE policy



Cancer Drugs Fund  
TA000  
Disease progression  
NHSE policy



Cancer Drugs Fund  
 TA000  
 Disease progression  
 NHSE policy