

## **Appendix H: Data analysis**

### **H.1 Review question 1 data analysis**

No additional data analysis performed for this question

### **H.2 Review question 2 data analysis**

No additional data analysis performed for this question

### **H.3 Review question 3 data analysis**

No additional data analysis performed for this question

### **H.4 Review question 4 data analysis**

No additional data analysis performed for this question

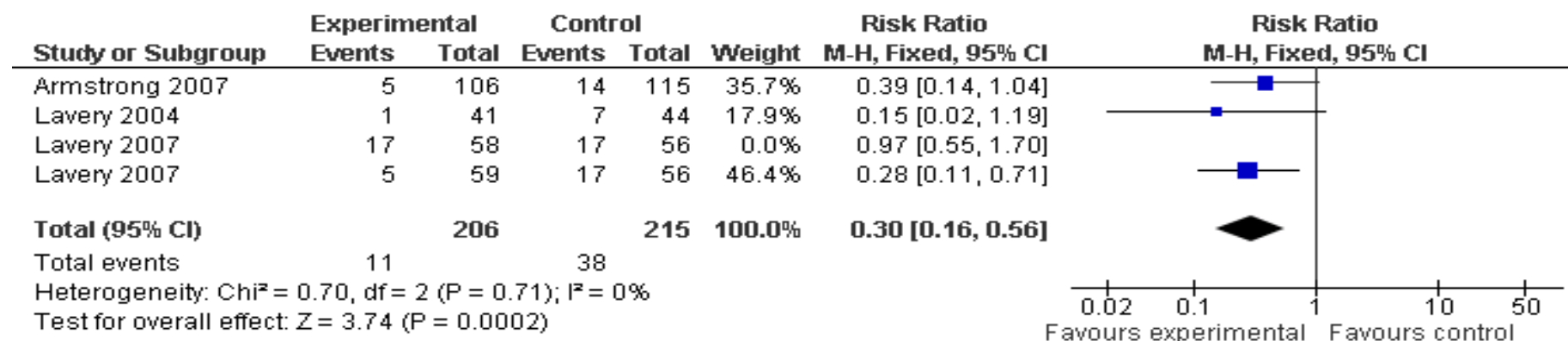
### **H.5 Review question 5 data analysis**

No additional data analysis performed for this question

## H.6 Review question 6 data analysis

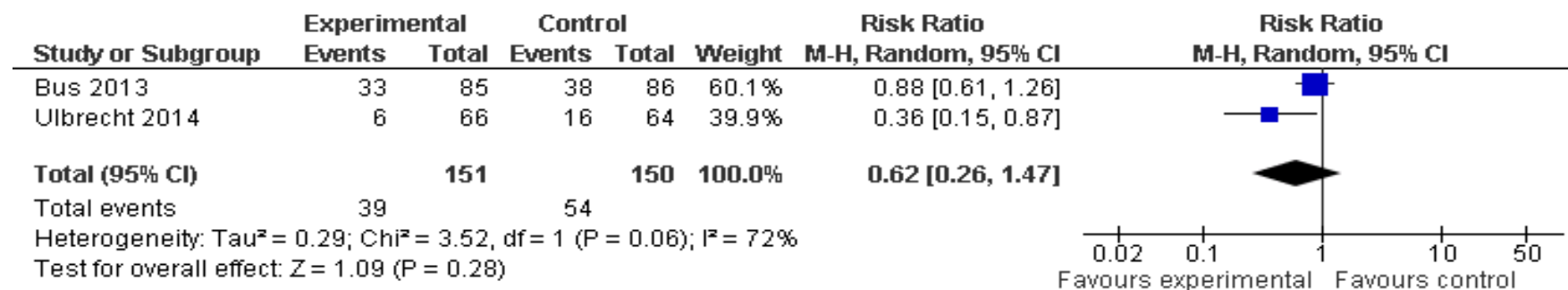
### H.6.1 Self-temperature monitoring for prevention of diabetic foot problems:

Rate of Ulceration



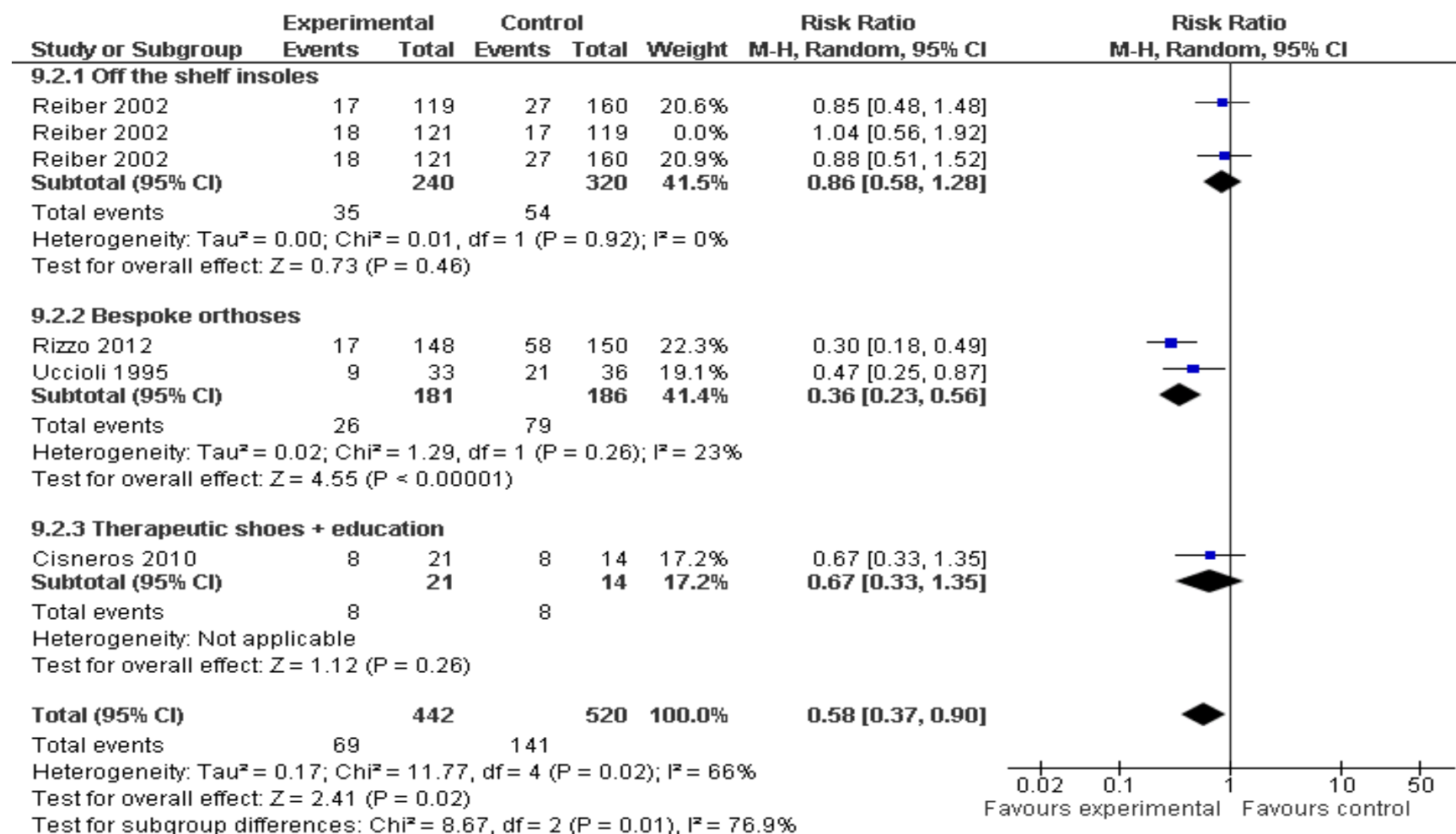
### H.6.2 Pressure customised vs shape customised orthoses for prevention of diabetic foot problems amongst high risk patients:

Rate of Ulceration



### H.6.3 Therapeutic footwear vs standard care for prevention of diabetic foot problems amongst high risk patients:

Rate of ulceration (different types of footwear vs standard care)

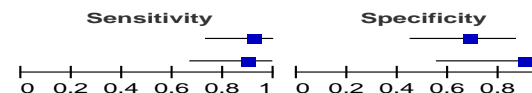


## H.7 Review question 6 data analysis

### H.7.1 ESR testing for osteomyelitis

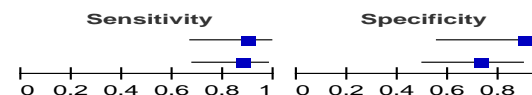
#### ERS $\geq$ 60mm/h

Study	TP	FP	FN	TN	Sensitivity	Specificity
Ertugrul 2009-ERS&#8805;60	22	7	2	15	0.92 [0.73, 0.99]	0.68 [0.45, 0.86]
Kaleta 2001-ERS&#8805;60	17	1	2	9	0.89 [0.67, 0.99]	0.90 [0.55, 1.00]



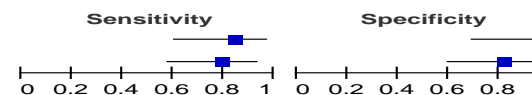
#### ERS $\geq$ 65mm/h

Study	TP	FP	FN	TN	Sensitivity	Specificity
Kaleta 2001-ERS&#8805;65	17	1	2	9	0.89 [0.67, 0.99]	0.90 [0.55, 1.00]
Ertugrul 2009-ERS&#8805;65	21	6	3	16	0.88 [0.68, 0.97]	0.73 [0.50, 0.89]



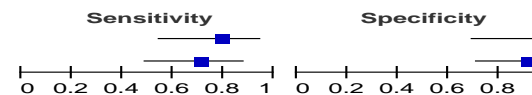
#### ERS $\geq$ 75mm/h

Study	TP	FP	FN	TN	Sensitivity	Specificity
Kaleta 2001-ERS&#8805;75	16	0	3	10	0.84 [0.60, 0.97]	1.00 [0.69, 1.00]
Ertugrul 2009-ERS&#8805;75	19	4	5	18	0.79 [0.58, 0.93]	0.82 [0.60, 0.95]



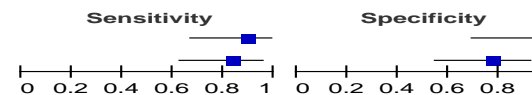
#### ERS $\geq$ 80mm/h

Study	TP	FP	FN	TN	Sensitivity	Specificity
Kaleta 2001-ERS&#8805;80	15	0	4	10	0.79 [0.54, 0.94]	1.00 [0.69, 1.00]
Ertugrul 2009-ERS&#8805;80	17	2	7	20	0.71 [0.49, 0.87]	0.91 [0.71, 0.99]



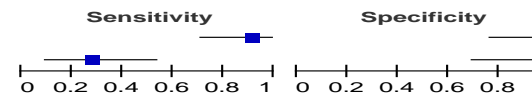
#### ERS $\geq$ 70mm/h

Study	TP	FP	FN	TN	Sensitivity	Specificity
Kaleta 2001-ERS&#8805;70	17	0	2	10	0.89 [0.67, 0.99]	1.00 [0.69, 1.00]
Ertugrul 2009-ERS&#8805;70	20	5	4	17	0.83 [0.63, 0.95]	0.77 [0.55, 0.92]



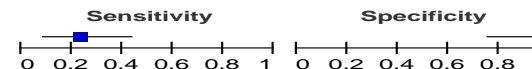
#### ERS>70mm/h

Study	TP	FP	FN	TN	Sensitivity	Specificity
Malabu 2007-ERS>70	20	1	2	20	0.91 [0.71, 0.99]	0.95 [0.76, 1.00]
Newman 1991-ERS>70	5	0	13	10	0.28 [0.10, 0.53]	1.00 [0.69, 1.00]



#### ERS>100mm/h

Study	TP	FP	FN	TN	Sensitivity	Specificity
Newman 1991-ERS>100	6	0	20	13	0.23 [0.09, 0.44]	1.00 [0.75, 1.00]



### H.8 No meta-analysis performed for this question

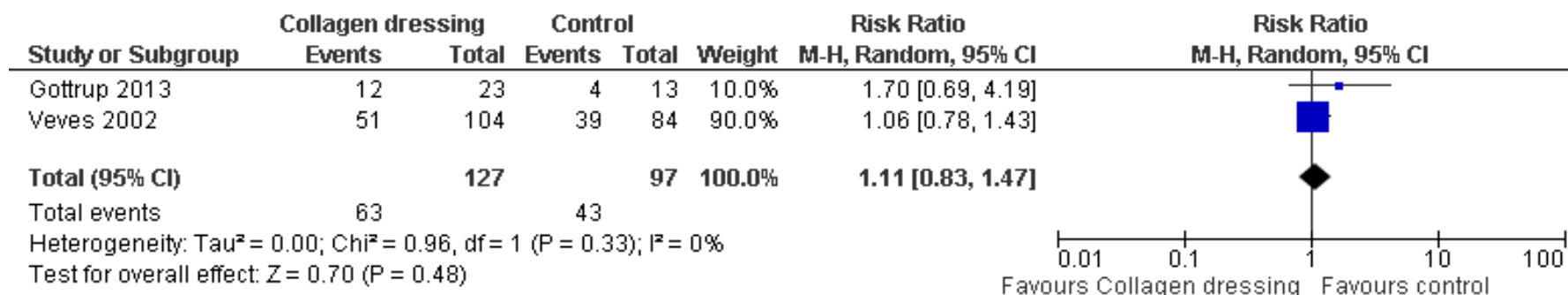
No additional data analysis performed for this question

### H.9 No meta-analysis performed for this question

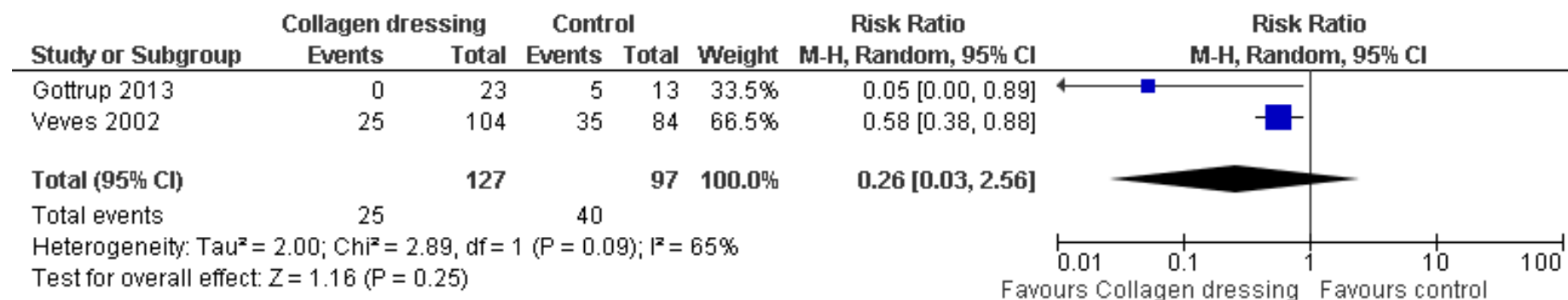
No additional data analysis performed for this question

### H.10 Review question 10 data analysis

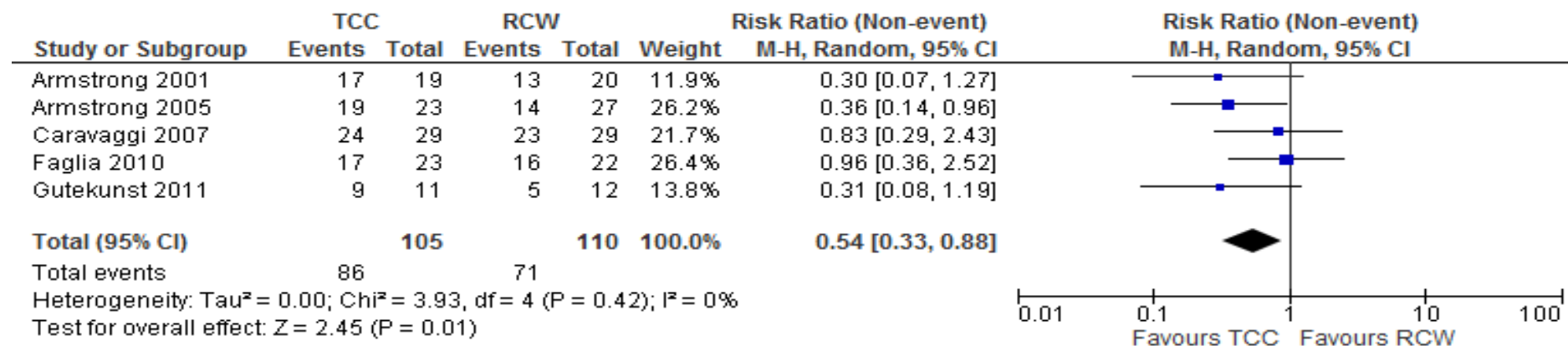
Figure 1: Collagen dressings- complete wound healing



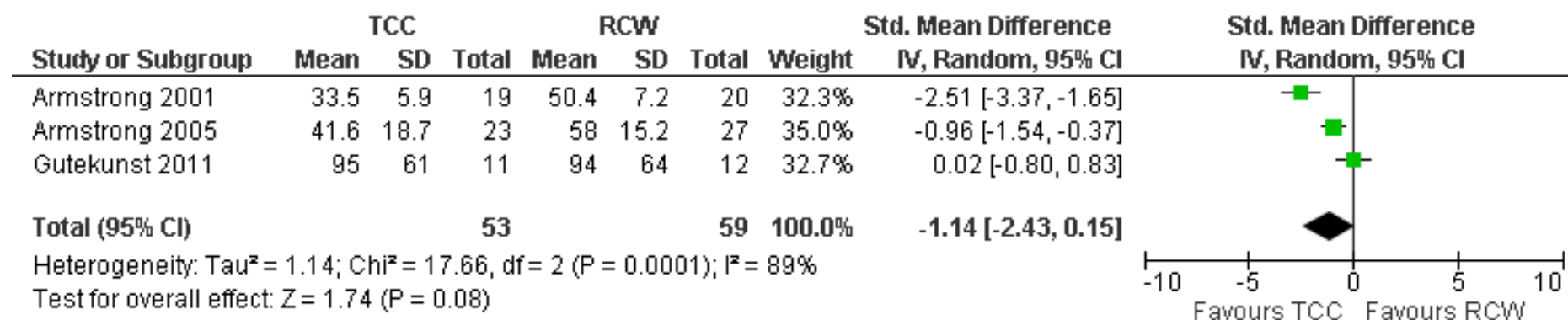
**Figure 2: Collagen dressings- Adverse events**



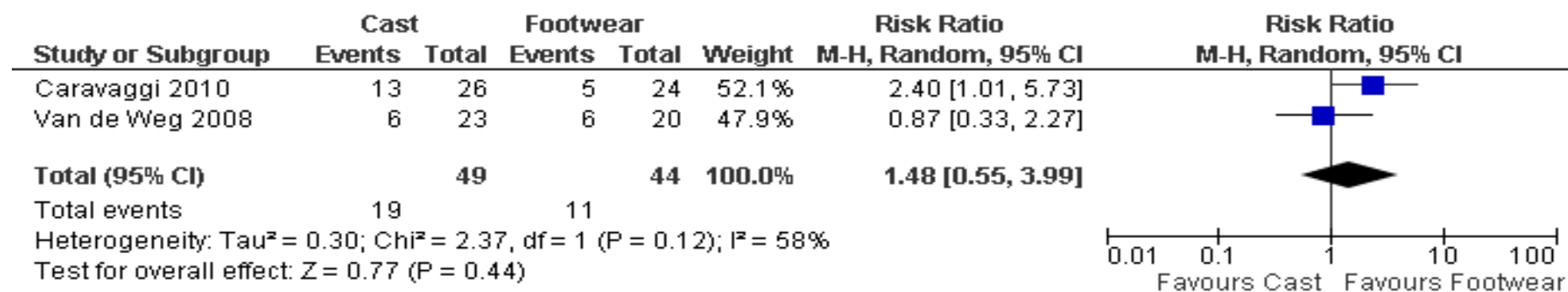
**Figure 3: Irremovable versus removable offloading devices- Wound healing TCC versus Removable cast walker**



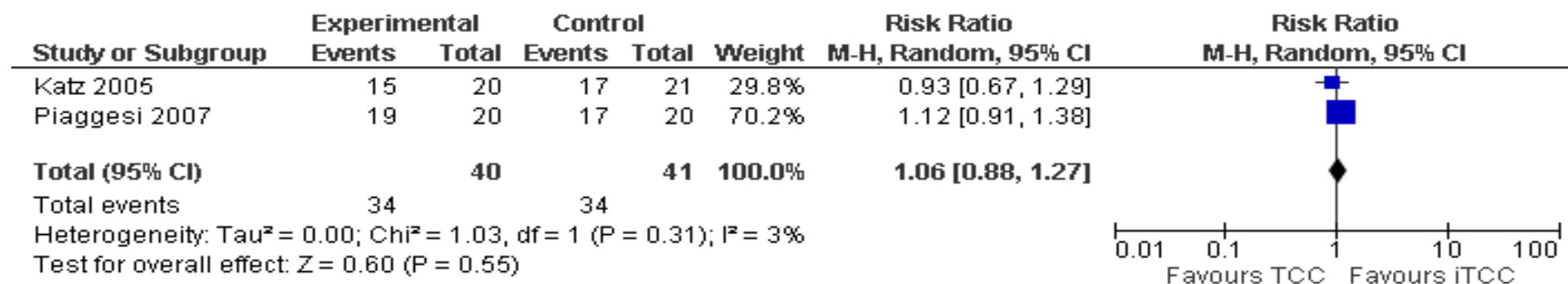
**Figure 4: Irremovable versus removable offloading devices- Mean healing time (days) TCC versus Removable cast walker**



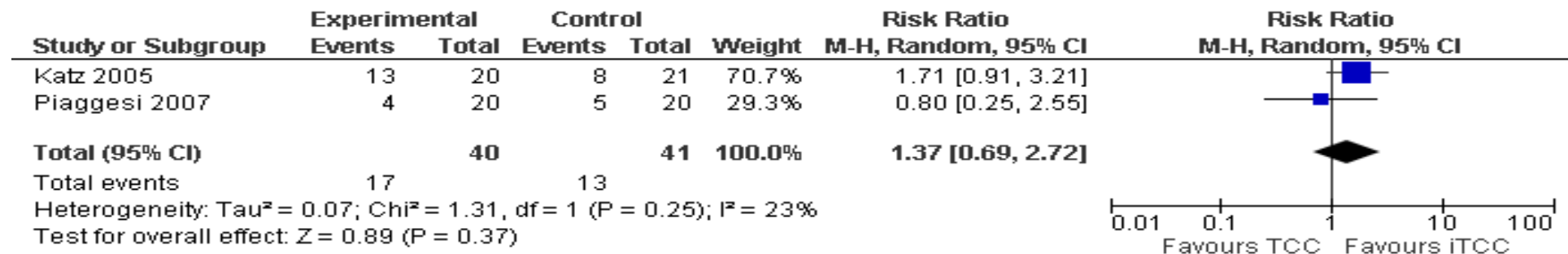
**Figure 5: Irremovable versus removable offloading devices- Wound healing TCC versus Removable footwear**



**Figure 6: Irremovable versus Irremovable offloading devices- Wound healing TCC versus iTCC**



**Figure 7: Irremovable versus Irremovable offloading devices- adverse events TCC versus iTCC**





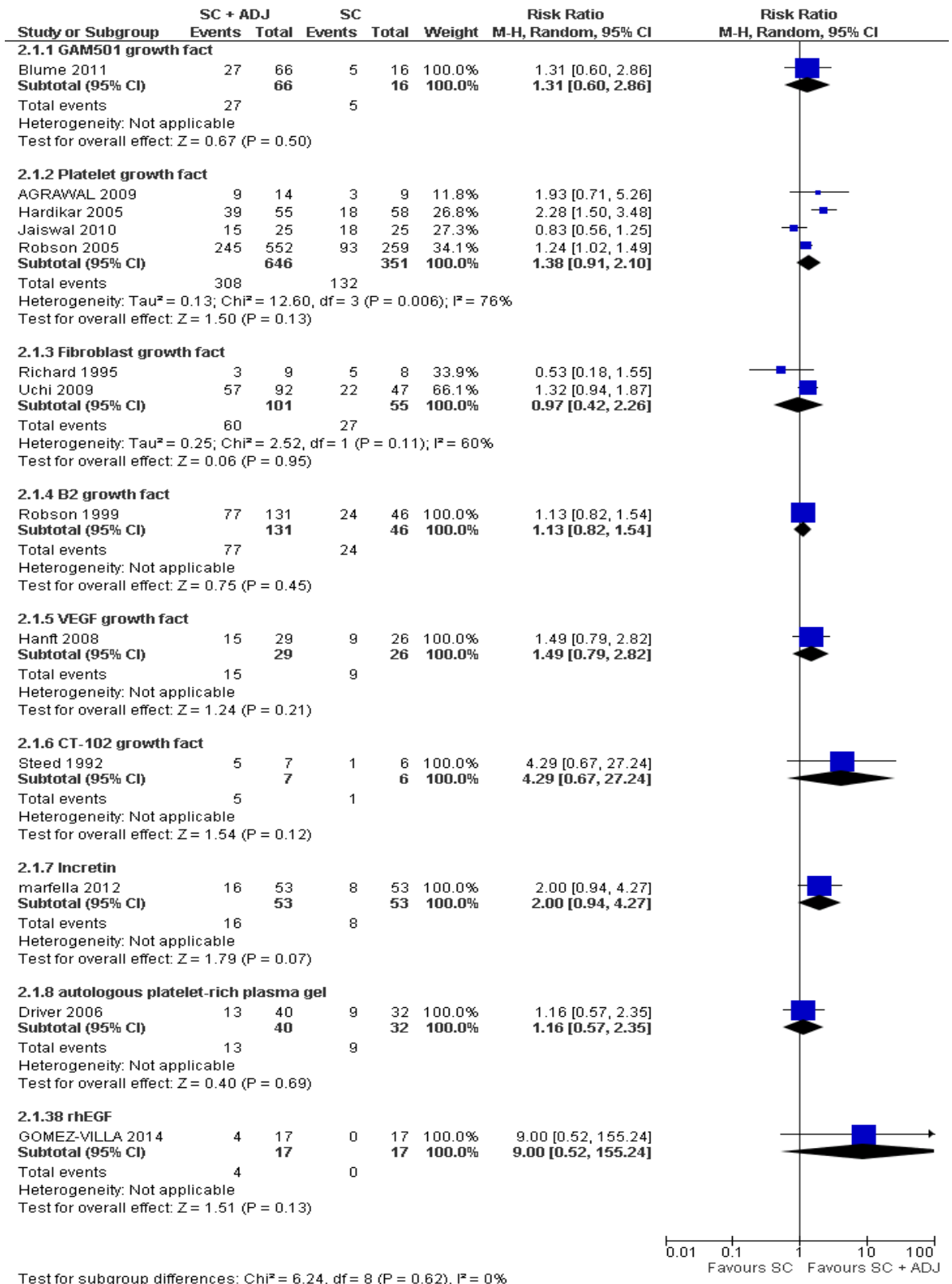
## **H.11 Review question 11 data analysis**

No additional data analysis performed for this question

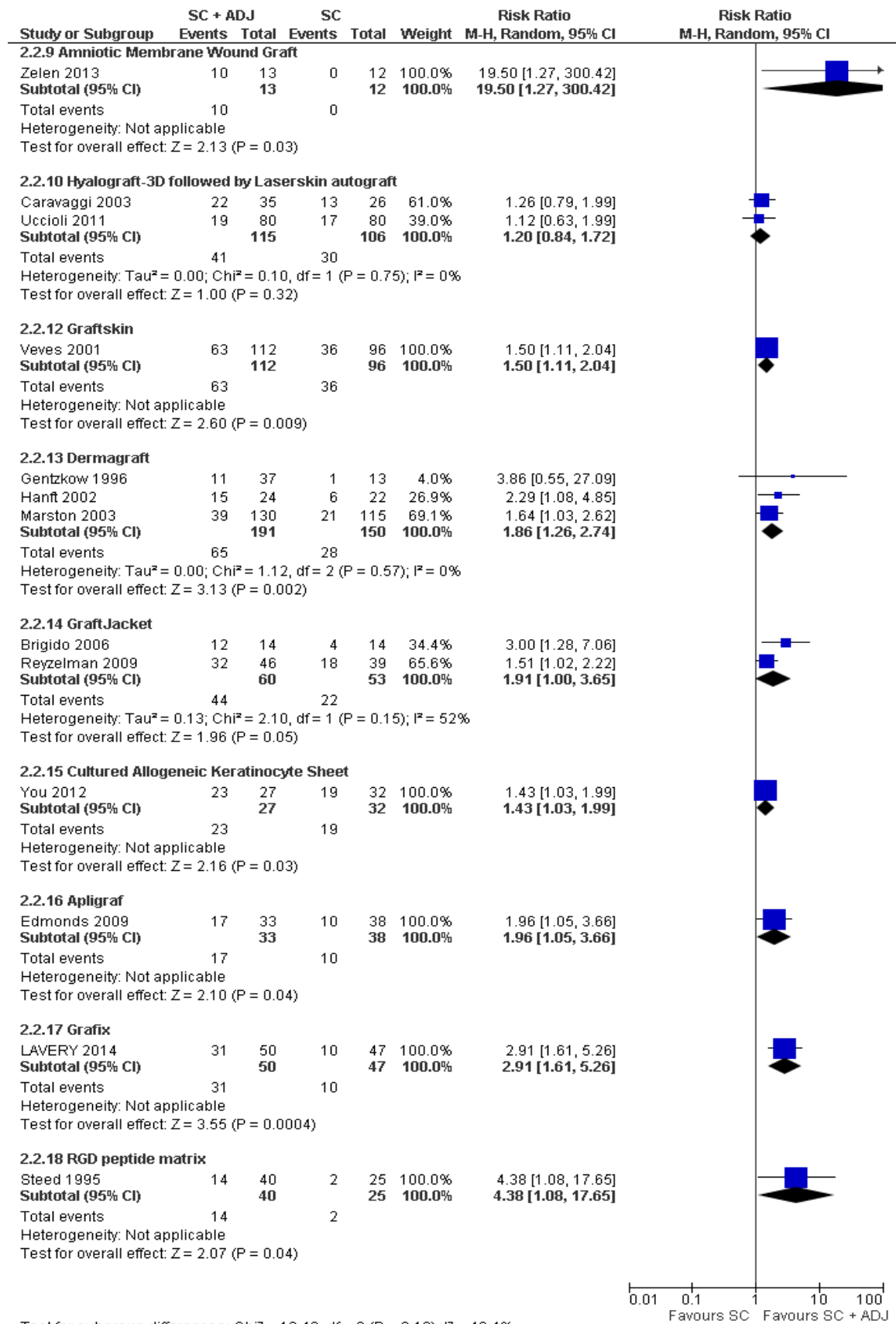
## H.12 Review question 12 data analysis

### H.12.1 Cure rate

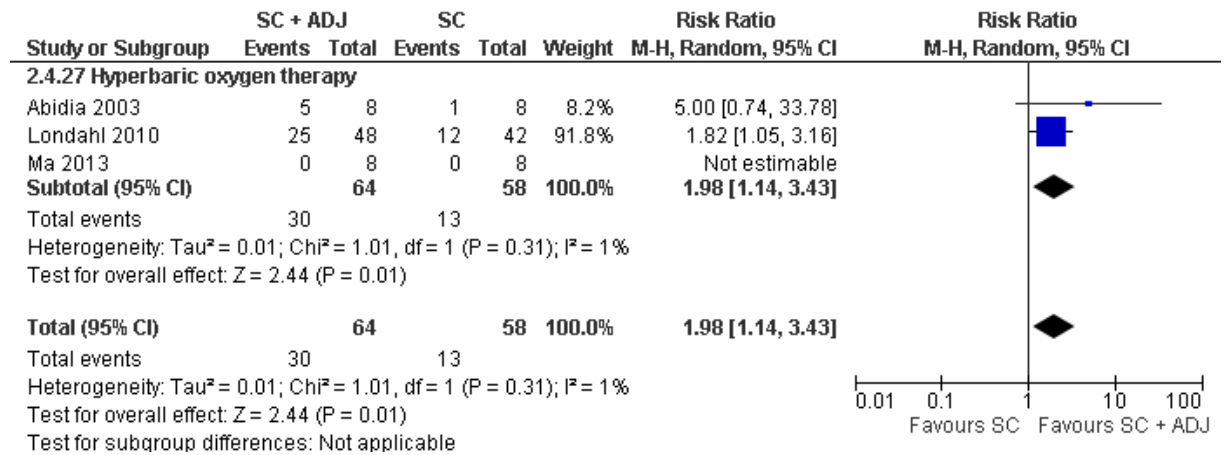
#### H.12.1.1 Growth factor and growth factor derived treatments



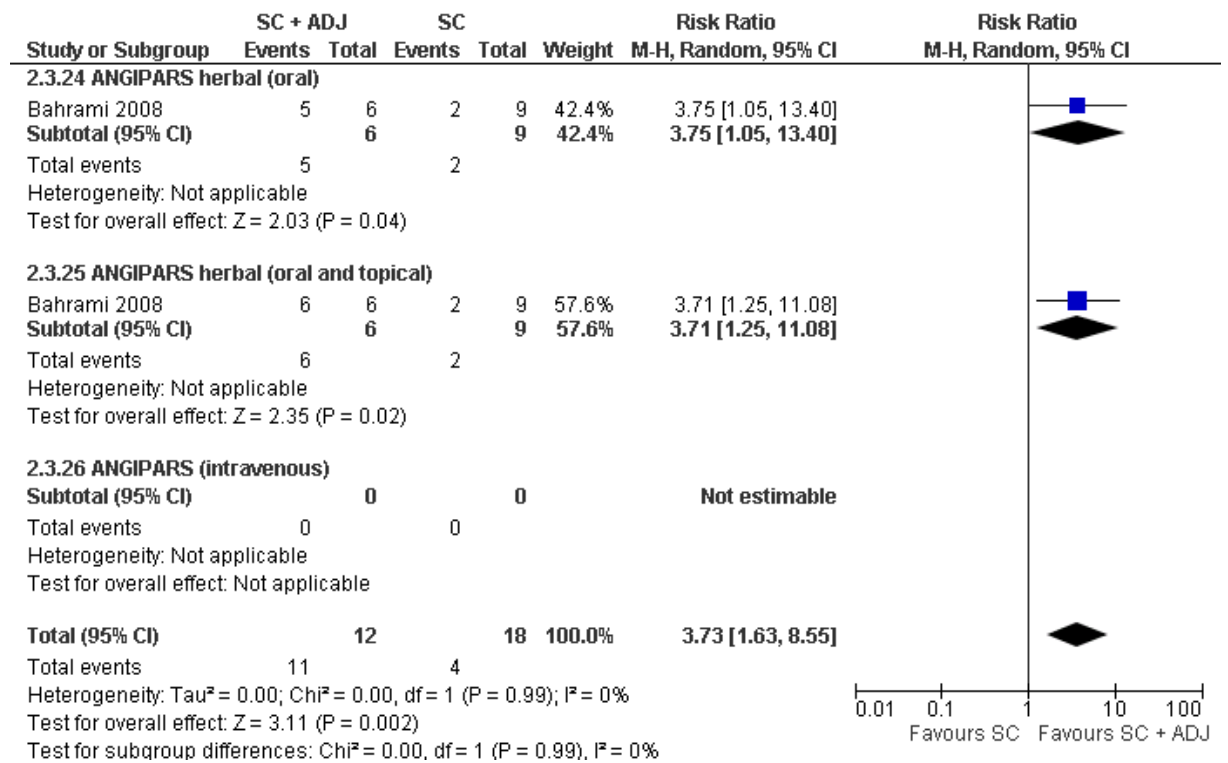
**H.12.1.2 Dermal or skin substitutes**



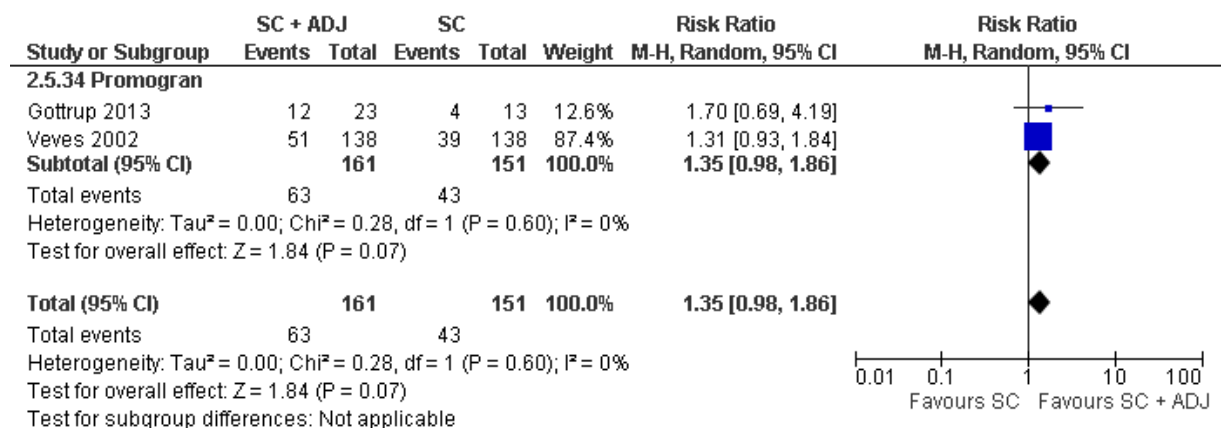
**H.12.1.3 Hyperbaric oxygen therapy**



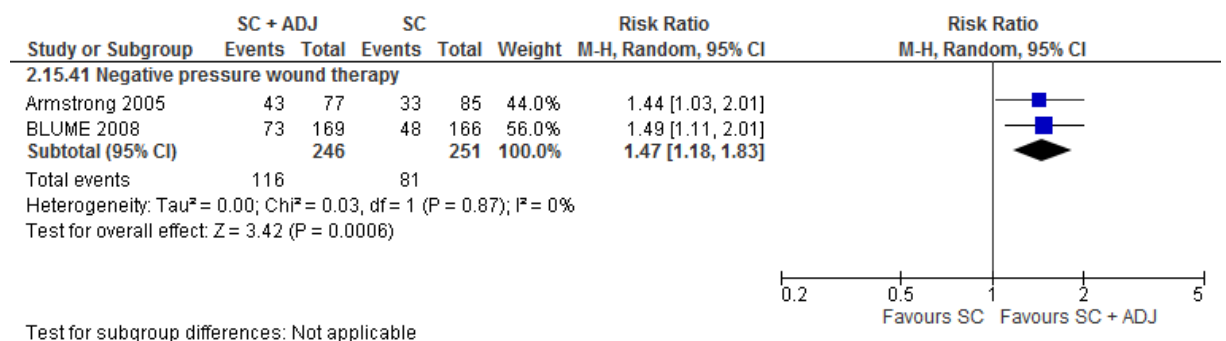
**H.12.1.4 ANGIPARS herbal**



### H.12.1.5 Promogran

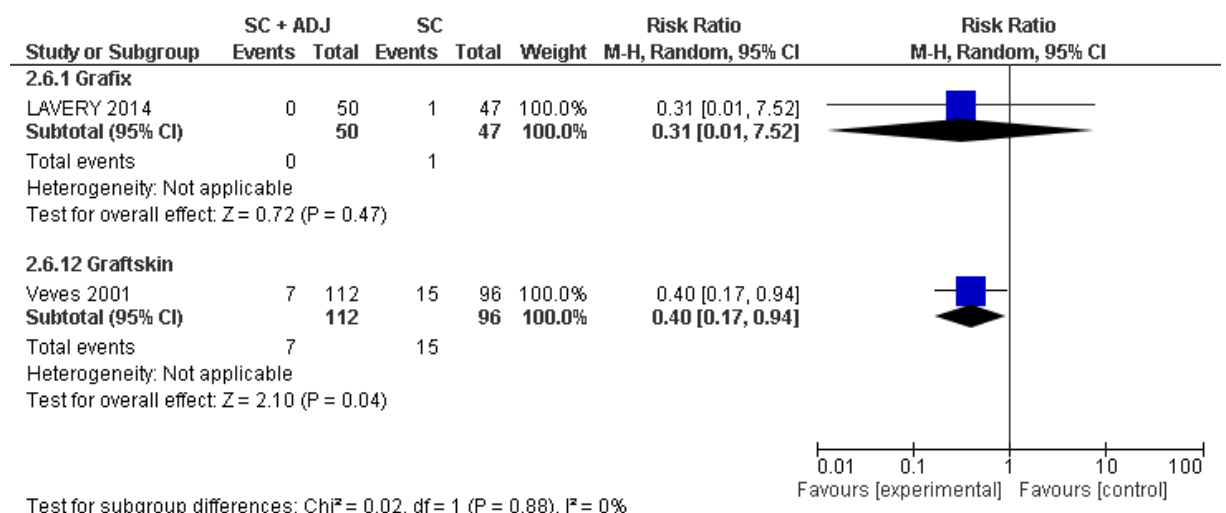


### H.12.1.6 Negative pressure wound therapy

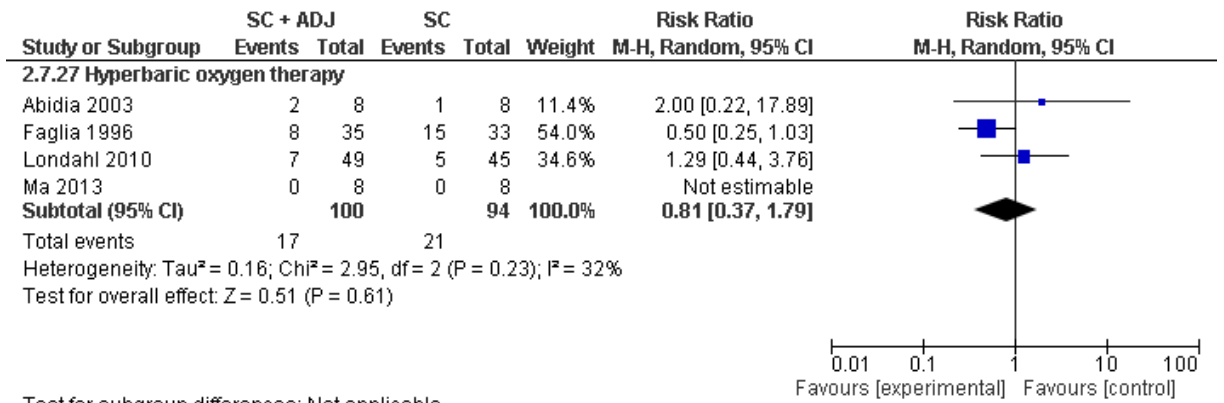


## H.12.2 Amputation rate

### H.12.2.1 Dermal or skin substitutes

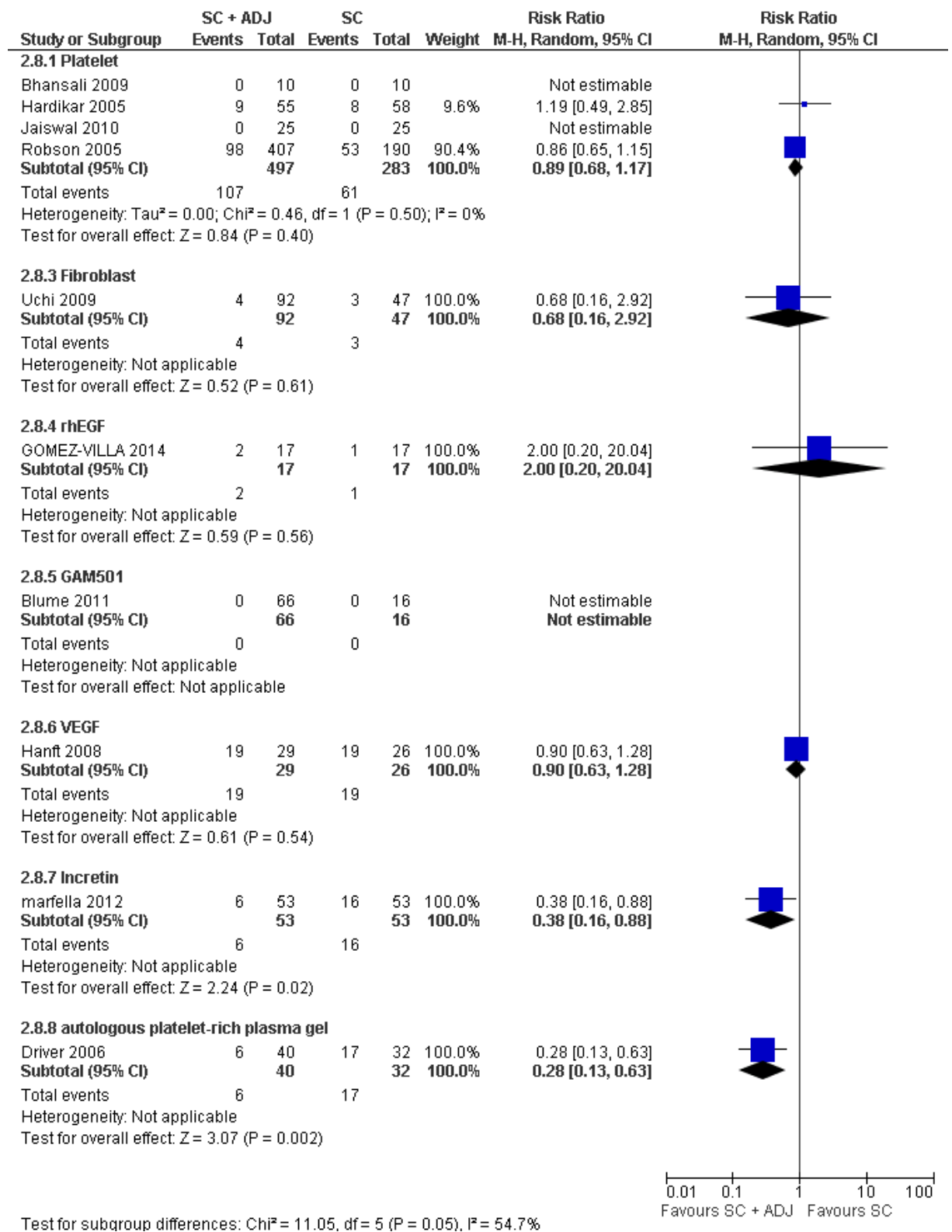


**H.12.2.2 Hyperbaric oxygen therapy**

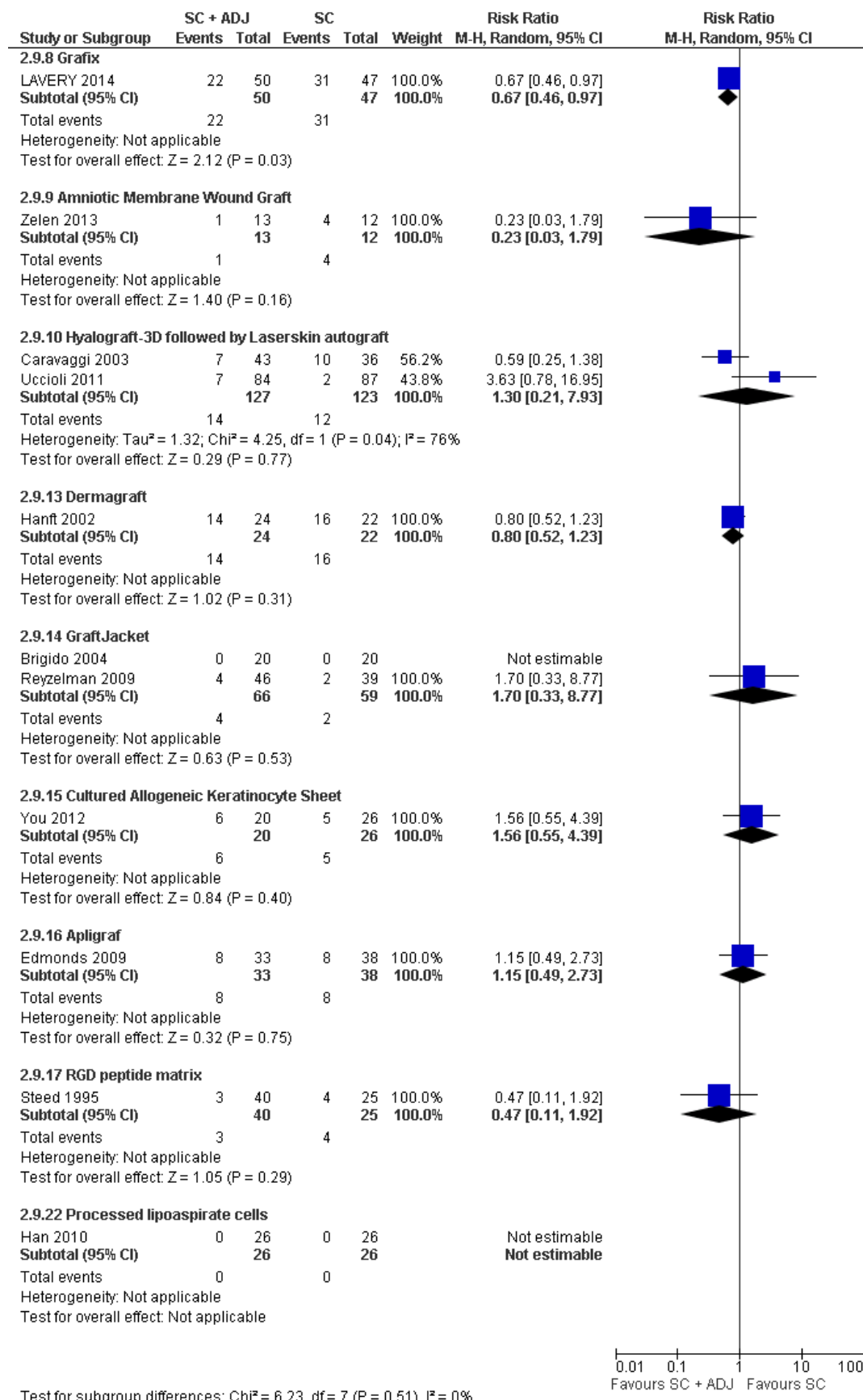


## H.12.3 Adverse events rate

### H.12.3.1 Growth factor and growth factor derived treatments

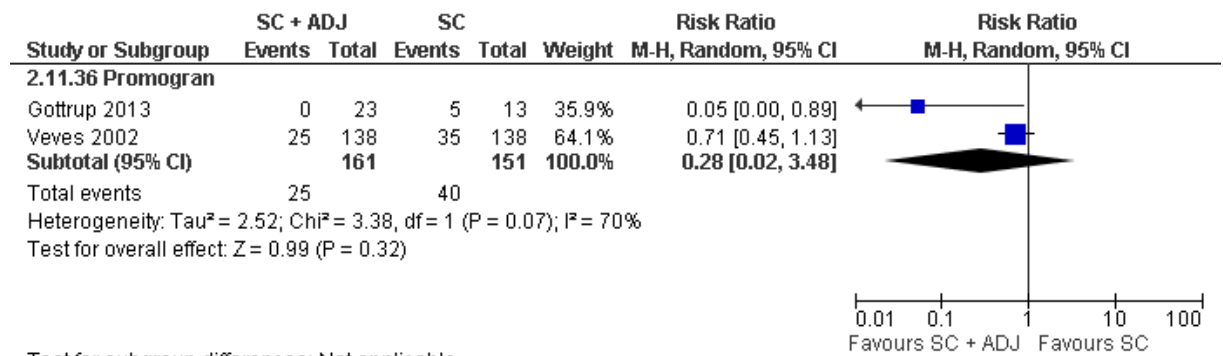


**H.12.3.2 Dermal or skin substitutes**

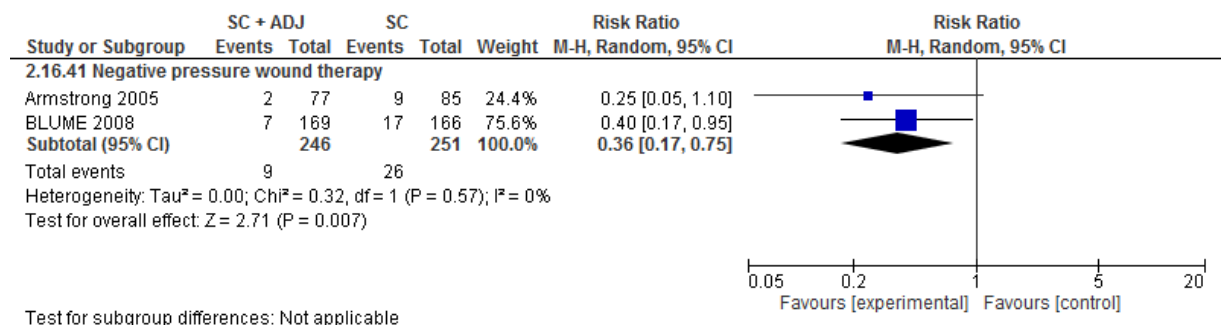




### H.12.3.3 Promogran

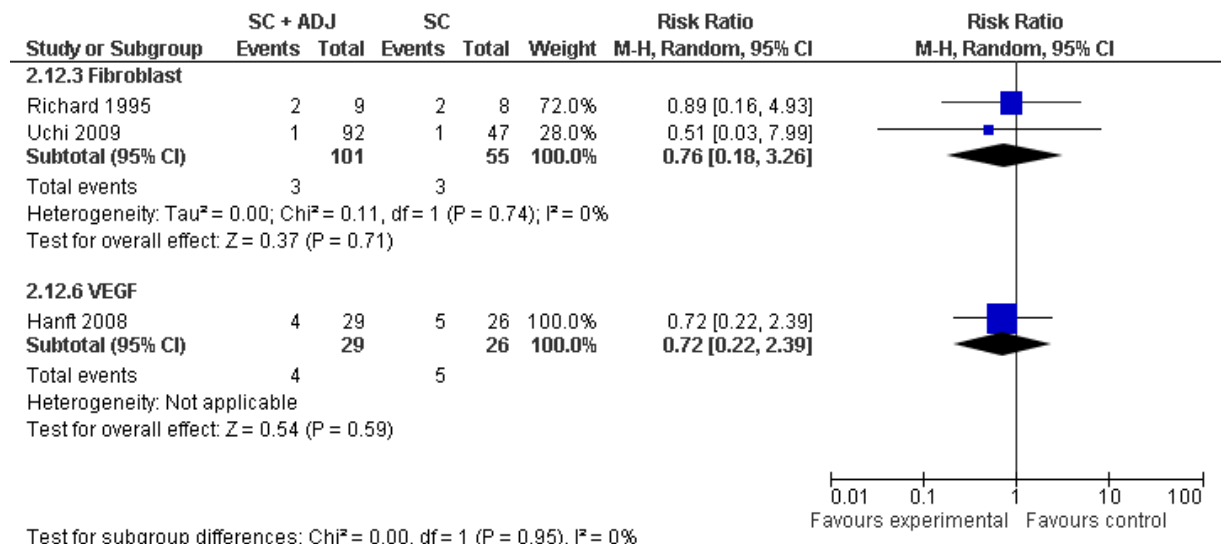


### H.12.3.4 Negative pressure wound therapy

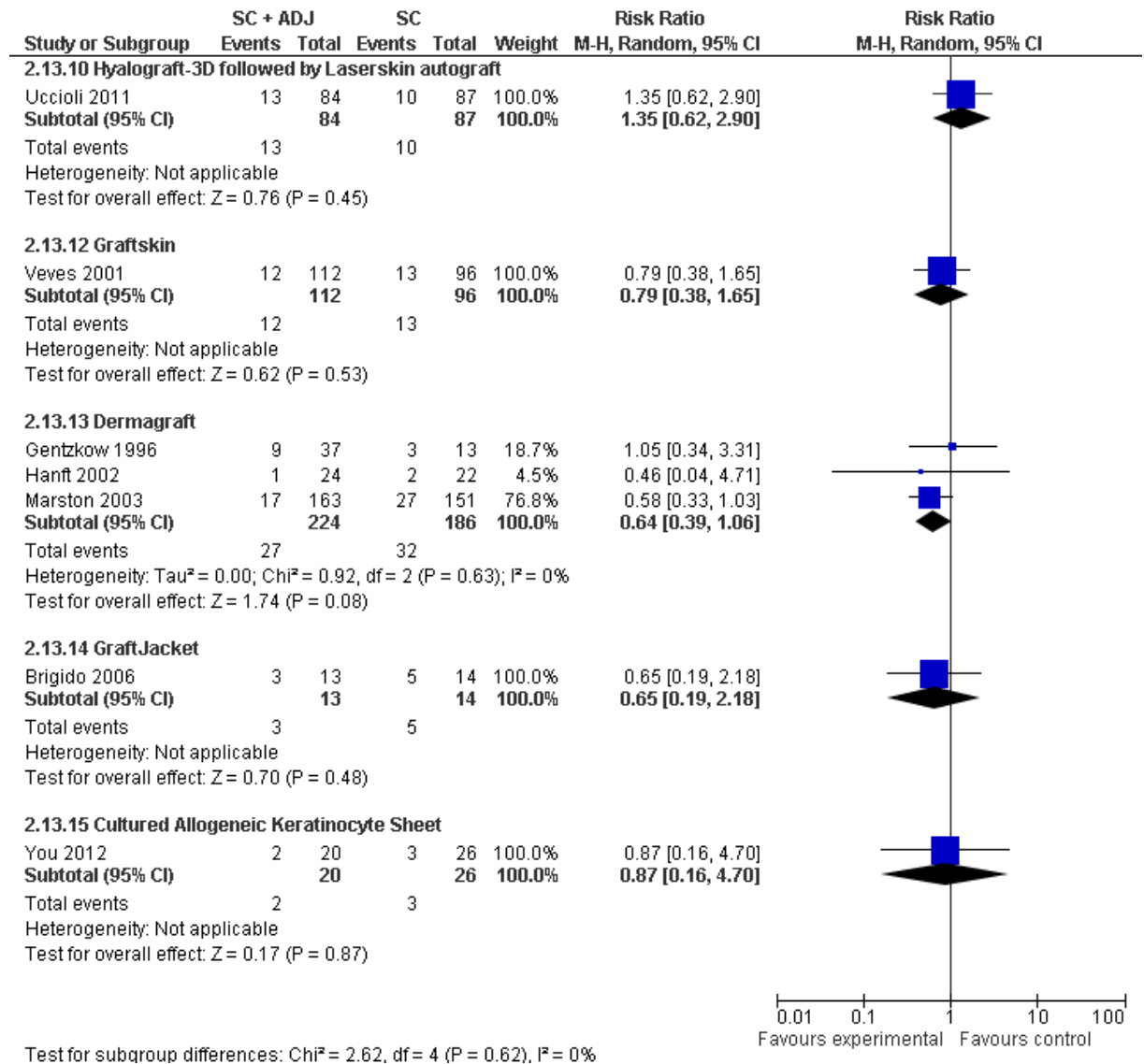


## H.12.4 Infection rate

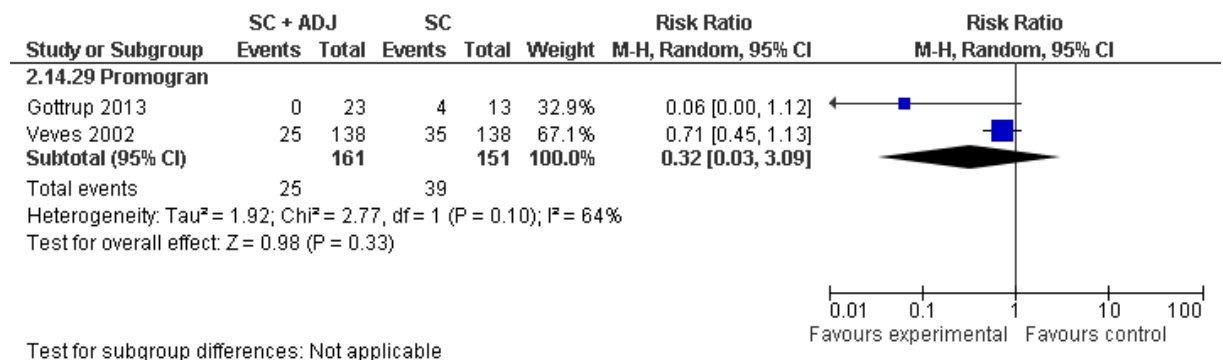
### H.12.4.1 Growth factor and growth factor derived treatments



**H.12.4.2 Dermal or skin substitutes**



**H.12.4.3 Promogran**



**H.13 Review question 13 data analysis**

No additional data analysis performed for this question

**H.14 Review question 14 data analysis**

No additional data analysis performed for this question

**H.15 Review question 15 data analysis**

No additional data analysis performed for this question

**H.16 Review question 16 data analysis**

No additional data analysis performed for this question