

Babies, children and young people's experience of healthcare

Supplement 6: Economic study selection

NICE guideline <TBC>

Supplement 6

March 2021

Draft for Consultation

These supplementary materials were developed by the National Guideline Alliance which is part of the Royal College of Obstetricians and Gynaecologists

Disclaimer

The recommendations in this guideline represent the view of NICE, arrived at after careful consideration of the evidence available. When exercising their judgement, professionals are expected to take this guideline fully into account, alongside the individual needs, preferences and values of their patients or service users. The recommendations in this guideline are not mandatory and the guideline does not override the responsibility of healthcare professionals to make decisions appropriate to the circumstances of the individual patient, in consultation with the patient and/or their carer or guardian.

Local commissioners and/or providers have a responsibility to enable the guideline to be applied when individual health professionals and their patients or service users wish to use it. They should do so in the context of local and national priorities for funding and developing services, and in light of their duties to have due regard to the need to eliminate unlawful discrimination, to advance equality of opportunity and to reduce health inequalities. Nothing in this guideline should be interpreted in a way that would be inconsistent with compliance with those duties.

NICE guidelines cover health and care in England. Decisions on how they apply in other UK countries are made by ministers in the [Welsh Government](#), [Scottish Government](#), and [Northern Ireland Executive](#). All NICE guidance is subject to regular review and may be updated or withdrawn.

Copyright

© NICE 2021. All rights reserved. Subject to [Notice of rights](#).

ISBN:

Contents

Economic literature search strategies	5
Economic study selection	9

Economic literature search strategies

A single literature search for health economic evidence was carried out to identify any health economic studies relating to babies, children and young people's experience of healthcare.

Databases: Medline; Medline Epub Ahead of Print; Medline In-Process & Other Non-Indexed Citations and Daily; Embase; & PsycInfo

Note: Multifile searching was carried out on Ovid. The database codes in the search strategy below are: ppez= Medline; Medline Epub Ahead of Print; Medline In-Process & Other Non-Indexed Citations and Daily; emez = Embase; psych= Psychinfo

Date last searched: 03/08/2020

#	Searches
1	(ADOLESCENT/ or MINORS/) use ppez
2	exp ADOLESCENT/ use emez
3	(adolescen\$ or teen\$ or youth\$ or young or juvenile? or minors or highschool\$).ti,ab,jw,nw.
4	exp CHILD/
5	(child\$ or schoolchild\$ or "school age" or "school aged" or preschool\$ or toddler\$ or kid? or kindergar\$ or boy? or girl?).ti,ab,jw,nw.
6	exp INFANT/
7	(infan\$ or neonat\$ or newborn\$ or baby or babies).ti,ab,jw,nw.
8	exp PEDIATRICS/ or exp PUBERTY/
9	(p?ediatric\$ or pubert\$ or prepubert\$ or pubescen\$ or prepubescen\$).ti,ab,jx,ec.
10	or/1-9
11	(Ambulance/ or Ambulance Transportation/ or Child Health Care/ or Community Care/ or Day Care/ or Dentist/ or Dental Facility/ or Pediatric Dentist/ or Dietitian/ or Emergency Care/ or Emergency Health Service/ or Emergency Ward/ or General Practice/ or Health Care/ or Health Care Delivery/ or Health Care Facility/ or Health Service/ or exp Home Care/ or Home Mental Health Care/ or Hospice/ or Hospice Care/ or exp Hospital/ or Hospital Care/ or Intensive Care Unit/ or Mental Health Care/ or Mental Health Service/ or Nursing Care/ or Newborn Care/ or Newborn Intensive Care/ or Neonatal Intensive Care Unit/ or Occupational Therapy/ or Ophthalmology/ or Orthodontics/ or Pediatric Intensive Care Unit/ or Pharmacy/ or exp Primary Health Care/ or Physiotherapy/ or Respite Care/ or School Health Nursing/ or exp School Health Service/ or Secondary Care Center/ or Secondary Health Care/ or "Speech and Language Rehabilitation"/ or Telemedicine/ or Tertiary Care Center/ or Tertiary Health Care/) use emez
12	(Ambulances/ or Adolescent Health Services/ or exp Child Health Services/ or Community Health Services/ or Community Pharmacy Services/ or Community Health Centers/ or Community Mental Health Centers/ or "Delivery of Health Care"/ or Dental Care for Children/ or exp Dental Health Services/ or Dentists/ or Dental Facilities/ or Emergency Medical Services/ or Emergency Service, Hospital/ or General Practice/ or Health Facilities/ or Health Services/ or Home Care Services/ or Home Care Services, Hospital-Based/ or Home Nursing/ or Hospice Care/ or Hospices/ or exp Hospitals/ or Intensive Care Units/ or Intensive Care Units, Pediatric/ or Intensive Care Units, Neonatal/ or exp Mental Health Services/ or Nutritionists/ or Occupational Therapy/ or Orthodontists/ or Pediatric Nursing/ or Pharmacies/ or Primary Health Care/ or Respite Care/ or exp School Health Services/ or School Nursing/ or Secondary Care/ or Telemedicine/ or Tertiary Healthcare/ or "Transportation of Patients"/) use ppez
13	(Adolescent Psychiatry/ or Community Health/ or Community Services/ or Dentists/ or Dental Health/ or Educational Psychology/ or Health Care Delivery/ or Health Care Services/ or Home Care/ or Home Visiting Programes/ or Hospice/ or exp Hospitals/ or Intensive Care/ or Language Therapy/ or exp Mental Health Services/ or Neonatal Intensive Care/ or Occupational Therapy/ or Outreach Programs/ or Pharmacy/ or Physical Therapy/ or Primary Health Care/ or Psychiatric Clinics/ or Psychiatric Units/ or

#	Searches
	Respite Care/ or Speech Therapy/ or Telemedicine/ or Telepsychiatry/ or Telepsychology/ or Walk In Clinics/) use psych
14	(hospital patient/ or hospitalized adolescent/ or hospitalized child/ or hospitalized infant/ or hospitalization/ or hospital patient/ or outpatient/) use emez
15	(adolescent, hospitalized/ or child, hospitalized/ or Hospitalization/ or inpatients/ or outpatients/) use ppez
16	(hospitalized patients/ or exp hospitalization/ or outpatients/) use psych
17	(hospital* or inpatient* or outpatient*).tw.
18	(health* adj3 (care or center* or centre* or clinic* or facility or facilities or service* or setting* or specialist*).tw.
19	((dental or communit* or emergency or hospital* or home or intensive or high-dependen* or mental* or primary or secondary or tertiary) adj3 (care or health*).tw.
20	(emergency adj2 room*).tw.
21	(ambulance* or CAMHS or dentist* or dietics or dieti?ian or hospice* or NICU or nutritionist* or orthodont* or ophthalmolog* or (outreach adj2 team*) or pharmacy or pharmacies or physio* or SCBU or SENCO or telemedicine*).tw.
22	((virtual* or online) adj2 (physician* or clinician* or doctor*).tw.
23	(communit* adj3 (p?ediatric* or nurs*).tw.
24	(home adj3 visit*).tw.
25	((walk-in or "urgent care") adj2 (centre* or center* or clinic* or service*).tw.
26	"speech and language therap*".tw.
27	general practice*.tw.
28	(health* and (nursery or nurseries or school*).tw.
29	(respite adj2 care).tw.
30	(foster care or "looked after children" or "children in care").tw.
31	or/11-30
32	(Experience/ or personal experience/ or attitude to health/ or patient attitude/ or patient preference/ or patient satisfaction/) use emez
33	(attitude to death/ or patient advocacy/ or consumer advocacy/ or professional-patient relationship/) use emez
34	(adverse childhood experience/ or exp attitude to health/ or exp Patient satisfaction/) use ppez
35	(exp Consumer Participation/ or "Patient Acceptance of Health Care"/ or *exp consumer satisfaction/ or patient preference/ or Attitude to Death/ or health knowledge, attitudes, practice/ or Patient Advocacy/ or consumer advocacy/ or narration/ or focus groups/ or Patient-Centered Care/ or exp Professional-Patient Relations/) use ppez
36	(exp Client Attitudes/ or exp Client Satisfaction/ or exp Attitudes/ or exp Health Attitudes/ or exp Preferences/ or exp Client Satisfaction/ or exp Death Attitudes/ or exp Advocacy/ or exp Preferences/ or client centered therapy/) use psych
37	(attitude* or choice* or dissatisf* or expectation* or experienc* or inform* or opinion* or perceive* or perception* or perspective* or preferen* or priorit* or satisf* or thought* or view*).tw.
38	((adolescen* or baby or babies or child* or infant* or patient* or teen* or young person*) adj4 (decisi* or decid* or involv* or participat*).tw.
39	("informed choice" or "shared decision making").tw.
40	empowerment.tw.
41	(patient-focused or patient-cent?red).tw.
42	(advocate or advocacy).tw.
43	((aversion or barrier* or facilitat* or hinder* or obstacle* or obstruct*) adj2 (care or health* or intervention* or pathway* or program* or service* or therap* or treat*).ti,ab.
44	or/32-43
45	10 and 31 and 44

#	Searches
46	exp United Kingdom/
47	(national health service* or nhs*).ti,ab,in,ad,cq.
48	(english not ((published or publication* or translat* or written or language* or speak* or literature or citation*) adj5 english)).ti,ab.
49	(gb or "g.b." or britain* or (british* not "british columbia") or uk or "u.k." or united kingdom* or (england* not "new england") or northern ireland* or northern irish* or scotland* or scottish* or ((wales or "south wales") not "new south wales") or welsh*).ti,ab,jx,in,ad,cq.
50	(bath or "bath's" or ((birmingham not alabama*) or ("birmingham's" not alabama*) or bradford or "bradford's" or brighton or "brighton's" or bristol or "bristol's" or carlisle* or "carlisle's" or (cambridge not (massachusetts* or boston* or harvard*)) or ("cambridge's" not (massachusetts* or boston* or harvard*)) or (canterbury not zealand*) or ("canterbury's" not zealand*) or chelmsford or "chelmsford's" or chester or "chester's" or chichester or "chichester's" or coventry or "coventry's" or derby or "derby's" or (durham not (carolina* or nc)) or ("durham's" not (carolina* or nc)) or ely or "ely's" or exeter or "exeter's" or gloucester or "gloucester's" or hereford or "hereford's" or hull or "hull's" or lancaster or "lancaster's" or leeds* or leicester or "leicester's" or (lincoln not nebraska*) or ("lincoln's" not nebraska*) or (liverpool not (new south wales* or nsw)) or ("liverpool's" not (new south wales* or nsw)) or ((london not (ontario* or ont or toronto*)) or ("london's" not (ontario* or ont or toronto*)) or manchester or "manchester's" or (newcastle not (new south wales* or nsw)) or ("newcastle's" not (new south wales* or nsw)) or norwich or "norwich's" or nottingham or "nottingham's" or oxford or "oxford's" or peterborough or "peterborough's" or plymouth or "plymouth's" or portsmouth or "portsmouth's" or preston or "preston's" or ripon or "ripon's" or salford or "salford's" or salisbury or "salisbury's" or sheffield or "sheffield's" or southampton or "southampton's" or st albans or stoke or "stoke's" or sunderland or "sunderland's" or truro or "truro's" or wakefield or "wakefield's" or wells or westminster or "westminster's" or winchester or "winchester's" or wolverhampton or "wolverhampton's" or (worcester not (massachusetts* or boston* or harvard*)) or ("worcester's" not (massachusetts* or boston* or harvard*)) or (york not ("new york*" or ny or ontario* or ont or toronto*)) or ("york's" not ("new york*" or ny or ontario* or ont or toronto*))))).ti,ab,in,ad,cq.
51	(bangor or "bangor's" or cardiff or "cardiff's" or newport or "newport's" or st asaph or "st asaph's" or st davids or swansea or "swansea's").ti,ab,in,ad,cq.
52	(aberdeen or "aberdeen's" or dundee or "dundee's" or edinburgh or "edinburgh's" or glasgow or "glasgow's" or inverness or (perth not australia*) or ("perth's" not australia*) or stirling or "stirling's").ti,ab,in,ad,cq.
53	(armagh or "armagh's" or belfast or "belfast's" or lisburn or "lisburn's" or londonderry or "londonderry's" or derry or "derry's" or newry or "newry's").ti,ab,in,ad,cq.
54	or/46-53
55	((exp africa/ or exp americas/ or exp antarctic regions/ or exp arctic regions/ or exp asia/ or exp oceania/) not (exp united kingdom/ or europe/)) use ppez
56	((exp "arctic and antarctic"/ or exp oceanic regions/ or exp western hemisphere/ or exp africa/ or exp asia/ or exp "australia and new zealand"/) not (exp united kingdom/ or europe/)) use emez
57	55 or 56
58	54 not 57
59	45 and 58
60	limit 59 to (yr="2009 - current" and english language)
61	health economics/ use emez
62	exp economic evaluation/ use emez
63	exp health care cost/ use emez
64	exp fee/ use emez
65	budget/ use emez
66	funding/ use emez
67	or/61-66
68	exp Economics/ use ppez
69	Value of life/ use ppez
70	exp "Costs and Cost Analysis"/ use ppez
71	exp Economics, Hospital/ use ppez

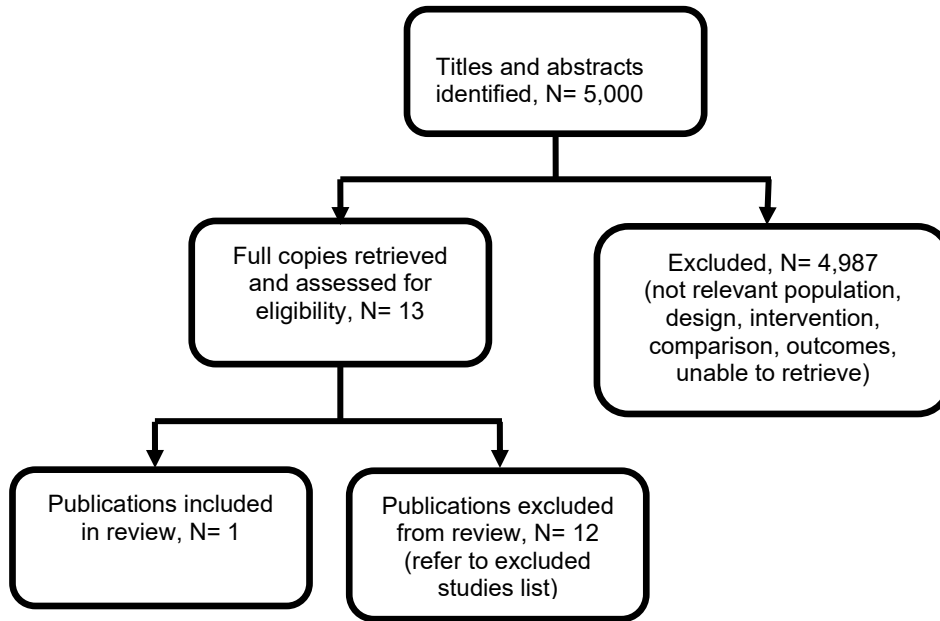
#	Searches
72	exp Economics, Medical/ use ppez
73	Economics, Nursing/ use ppez
74	Economics, Pharmaceutical/ use ppez
75	exp "Fees and Charges"/ use ppez
76	exp Budgets/ use ppez
77	or/68-76
78	exp economics/ use psych
79	exp "costs and cost analysis"/ use psych
80	health care costs/ use psych
81	funding/ use psych
82	pharmacoeconomics/ use psych
83	or/78-82
84	(economic* or pharmaco?economic*).ti.
85	(price* or pricing*).ti,ab.
86	(cost* adj2 (effective* or utilit* or benefit* or minimi* or unit* or estimat* or variable*)).ab.
87	(financ* or fee or fees).ti,ab.
88	(value adj2 (money or monetary)).ti,ab.
89	budget*.ti,ab.
90	cost*.ti.
91	or/84-90
92	67 or 77 or 83 or 91
93	60 and 92

1 Economic study selection

2 Economic evidence study selection for the whole guideline is shown in Figure 1. The number
3 of included and excluded studies for each review question is detailed in Table 1.

4 **Figure 1: Economic study selection**

5



6

7 **Table 1: Summary of economic study selection**

Evidence review	Review question	Number of included studies	Number of excluded studies
A	1.1 How do children and young people, and the parents and carers of babies and young children, prefer to be involved and supported in planning their healthcare and making informed, shared decisions about their health?	0	0
B	1.2 How should healthcare staff communicate with babies, children, young people and the parents or carers of babies and young children?	0	0
C	1.3 How should issues about consent, privacy and confidentiality be addressed with babies, children and young people?	0	0

Evidence review	Review question	Number of included studies	Number of excluded studies
D	2.1 How do children and young people, and the parents or carers of babies and young children prefer to access healthcare information?	0	0
E	2.2 What are the best ways to help children and young people and the parents and carers of babies and young children understand the risks and benefits of healthcare decisions?	0	0
F	3.1 How do children and young people want their parents or carers to be involved in their care and decisions about their care?	0	0
G	3.2 How do children and young people want healthcare staff to support them?	0	0
H	3.3 How can children and young people be empowered to advocate for themselves?	0	0
I	3.4 How can the views of babies, children and young people be best represented by independent advocates?	0	0
J	4.1a What factors are important to babies, children and young people to improve their experience of healthcare services?	0	0
J	4.1b What factors are important to babies, children and young people to improve their experience of healthcare services?	0	0
K	5.1 How can and how should the perspective of children and young people, and of the parents or carers of babies inform the design of healthcare services?	0	0
L	5.2 How can the experience of babies, children and young people be measured so as to improve their experience of healthcare?	1	12
M	6.1 What features of environment in which healthcare is provided are important to babies, children and young people to improve their experience of care?	0	0
N	7.1 How can health services support babies, children and young people to participate in usual activities (for example family relationships, schooling, peer friendships, social activities)?	0	0
O	8.1 What are the facilitators of, and barriers to, accessing healthcare services for babies, children and young people?	0	0
P	8.2 What factors promote, or present barriers to, continuity and coordination of care for babies, children and young people?	0	0