

National Institute for Health and Care Excellence

FINAL

Disabled children and young people up to 25 with severe complex needs: integrated service delivery and organisation across education, health and social care

Supplement B: Economic literature searches and selection

NICE guideline NG213

Economic literature searches and selection

March 2022

Final

Supplementary materials were developed by the National Guideline Alliance which is part of the Royal College of Obstetricians and Gynaecologists

Disclaimer

The recommendations in this guideline represent the view of NICE, arrived at after careful consideration of the evidence available. When exercising their judgement, professionals are expected to take this guideline fully into account, alongside the individual needs, preferences and values of their patients or service users. The recommendations in this guideline are not mandatory and the guideline does not override the responsibility of healthcare professionals to make decisions appropriate to the circumstances of the individual patient, in consultation with the patient and/or their carer or guardian.

Local commissioners and/or providers have a responsibility to enable the guideline to be applied when individual health professionals and their patients or service users wish to use it. They should do so in the context of local and national priorities for funding and developing services, and in light of their duties to have due regard to the need to eliminate unlawful discrimination, to advance equality of opportunity and to reduce health inequalities. Nothing in this guideline should be interpreted in a way that would be inconsistent with compliance with those duties.

NICE guidelines cover health and care in England. Decisions on how they apply in other UK countries are made by ministers in the [Welsh Government](#), [Scottish Government](#), and [Northern Ireland Executive](#). All NICE guidance is subject to regular review and may be updated or withdrawn.

Copyright

© NICE 2022. All rights reserved. Subject to Notice of Rights.

Contents

Contents	4
Economic literature search strategies	5
Databases: Medline; Medline EPub Ahead of Print; and Medline In-Process & Other Non-Indexed Citations	5
Databases: Embase; and Embase Classic	7
Database: Health Management Information Consortium (HMIC)	9
Database: Social Policy and Practice	11
Database: PsycInfo	12
Database: Emcare	13
Databases: Cochrane Central Register of Controlled Trials (CCTR)	15
Database: NHS Economic Evaluation Database (NHSEED)	17
Database: Health Technology Abstracts (HTA)	18
Databases: Applied Social Sciences Index & Abstracts (ASSIA); Social Services Abstracts; Sociological Abstracts; and ERIC (Education Resources Information Centre)	18
Database: British Education Index	19
Database: CINAHL Plus (Cumulative Index to Nursing and Allied Health Literature)	19
Database: Social Sciences Citation Index (SSCI)	20
Database: Social Care Online	21
Economic study selection	22

Economic literature search strategies

Databases: Medline; Medline EPub Ahead of Print; and Medline In-Process & Other Non-Indexed Citations

Date of last search: 22/10/2019

#	Searches
1	ECONOMICS/
2	VALUE OF LIFE/
3	exp "COSTS AND COST ANALYSIS"/
4	exp ECONOMICS, HOSPITAL/
5	exp ECONOMICS, MEDICAL/
6	exp RESOURCE ALLOCATION/
7	ECONOMICS, NURSING/
8	ECONOMICS, PHARMACEUTICAL/
9	exp "FEES AND CHARGES"/
10	exp BUDGETS/
11	budget*.ti,ab.
12	cost*.ti,ab.
13	(economic* or pharmaco?economic*).ti,ab.
14	(price* or pricing*).ti,ab.
15	(financ* or fee or fees or expenditure* or saving*).ti,ab.
16	(value adj2 (money or monetary)).ti,ab.
17	resourc* allocat*.ti,ab.
18	(fund or funds or funding* or funded).ti,ab.
19	(ration or rations or rationing* or rationed).ti,ab.
20	ec.fs.
21	or/1-20
22	ADOLESCENT/ or MINORS/
23	(adolescen\$ or teen\$ or youth\$ or young or juvenile? or minors or highschool\$).ti,ab.
24	exp CHILD/
25	(child\$ or schoolchild\$ or "school age" or "school aged" or preschool\$ or toddler\$ or kid? or kindergar\$ or boy? or girl?).ti,ab.
26	exp INFANT/
27	(infan\$ or neonat\$ or newborn\$ or baby or babies).ti,ab.
28	exp PEDIATRICS/
29	p?ediatric\$.ti,ab.
30	YOUNG ADULT/
31	young\$ adult?.ti,ab.
32	or/22-31
33	exp DISABLED PERSONS/
34	exp MENTAL DISORDERS/
35	exp COMMUNICATION DISORDERS/
36	exp INTELLECTUAL DISABILITY/
37	(disable? or disabilit\$ or handicap\$ or retard\$ or disorder? or impair\$ or condition? or difficulty or difficulties or deficit? or dysfunct\$).ti.
38	((sever\$ or complex\$ or special or high) adj3 need?).ti,ab.
39	SHCN.ti,ab.
40	or/33-39
41	32 and 40
42	DISABLED CHILDREN/
43	CSHCN.ti,ab.
44	"Education Health and Care plan?".ti,ab.
45	EHC plan?.ti,ab.
46	EHCP?.ti,ab.
47	or/41-46
48	(HEALTH SERVICES/ or CHILD HEALTH SERVICES/ or ADOLESCENT HEALTH SERVICES/ or COMMUNITY HEALTH SERVICES/ or HOME CARE SERVICES/ or HEALTH SERVICES FOR PEOPLE WITH DISABILITIES/ or MENTAL HEALTH SERVICES/ or NURSING SERVICES/ or exp HEALTH PERSONNEL/) and (exp SOCIAL WORK/ or SOCIAL WORK, PSYCHIATRIC/ or SOCIAL WORKERS/ or SOCIAL SUPPORT/) and (EDUCATION/ or exp EDUCATION, SPECIAL/ or SCHOOLS/ or SCHOOL HEALTH SERVICES/ or SCHOOLS, NURSERY/ or exp

Disabled children and young people up to 25 with severe complex needs: Economic literature searches and selection (March 2022)

#	Searches
	NURSERIES/ or CHILD DAY CARE CENTERS/ or UNIVERSITIES/ or TEACHING/ or REMEDIAL TEACHING/ or SCHOOL TEACHERS/)
49	((health\$ or NHS or clinical or clinician? or medical or medic? or physician? or consultant? or nurse? or general practitioner? or GP? or occupational therapist? or OT? or allied health professional? or AHP? or ((speech or language) adj3 therapist?) or SLT?) adj5 social\$ adj5 (educat\$ or school\$ or teach\$ or headmaster? or headmistress\$ or SENCO? or DfE?)).ti,ab.
50	or/48-49
51	INTERINSTITUTIONAL RELATIONS/
52	INTERSECTORAL COLLABORATION/
53	"DELIVERY OF HEALTH CARE, INTEGRATED"/
54	(interinstitution\$ or multiinstitution\$ or jointinstitution\$).ti,ab.
55	(interorgani?ation\$ or multiorgani?ation\$ or jointorgani?ation\$).ti,ab.
56	(intersector\$ or multisector\$ or jointsector\$).ti,ab.
57	(interagenc\$ or multiagenc\$ or jointagenc\$).ti,ab.
58	(interprofession\$ or multiprofession\$ or jointprofession\$).ti,ab.
59	((inter or multi or joint) adj3 (institution\$ or organi?ation\$ or sector\$ or agenc\$ or profession\$)).ti,ab.
60	((institution\$ or organi?ation\$ or sector\$ or agenc\$ or profession\$ or care or service? or department\$) adj5 (collaborat\$ or coordinat\$ or co-ordinat\$ or cooperat\$ or co-operat\$ or integrat\$ or partner\$)).ti.
61	or/51-60
62	(HEALTH SERVICES/ or CHILD HEALTH SERVICES/ or ADOLESCENT HEALTH SERVICES/ or COMMUNITY HEALTH SERVICES/ or HOME CARE SERVICES/ or HEALTH SERVICES FOR PEOPLE WITH DISABILITIES/ or MENTAL HEALTH SERVICES/ or NURSING SERVICES/ or exp HEALTH PERSONNEL/) and (exp SOCIAL WORK/ or SOCIAL WORK, PSYCHIATRIC/ or SOCIAL WORKERS/ or SOCIAL SUPPORT/)
63	(HEALTH SERVICES/ or CHILD HEALTH SERVICES/ or ADOLESCENT HEALTH SERVICES/ or COMMUNITY HEALTH SERVICES/ or HOME CARE SERVICES/ or HEALTH SERVICES FOR PEOPLE WITH DISABILITIES/ or MENTAL HEALTH SERVICES/ or NURSING SERVICES/ or exp HEALTH PERSONNEL/) and (EDUCATION/ or exp EDUCATION, SPECIAL/ or SCHOOLS/ or SCHOOL HEALTH SERVICES/ or SCHOOLS, NURSERY/ or exp NURSERIES/ or CHILD DAY CARE CENTERS/ or UNIVERSITIES/ or TEACHING/ or REMEDIAL TEACHING/ or SCHOOL TEACHERS/)
64	(exp SOCIAL WORK/ or SOCIAL WORK, PSYCHIATRIC/ or SOCIAL WORKERS/ or SOCIAL SUPPORT/) and (EDUCATION/ or exp EDUCATION, SPECIAL/ or SCHOOLS/ or SCHOOL HEALTH SERVICES/ or SCHOOLS, NURSERY/ or exp NURSERIES/ or CHILD DAY CARE CENTERS/ or UNIVERSITIES/ or TEACHING/ or REMEDIAL TEACHING/ or SCHOOL TEACHERS/)
65	or/62-64
66	"HEALTH SERVICES NEEDS AND DEMAND"/
67	DELIVERY OF HEALTH CARE/
68	COOPERATIVE BEHAVIOR/
69	COMMUNICATION/
70	INTERPROFESSIONAL RELATIONS/
71	or/66-70
72	((health\$ or NHS or clinical or clinician? or medical or medic? or physician? or consultant? or nurse? or general practitioner? or GP? or occupational therapist? or OT? or allied health professional? or AHP? or ((speech or language) adj3 therapist?) or SLT?) adj5 social\$ adj5 (service? or department? or institution\$ or organi?ation\$ or sector\$ or agenc\$ or provider? or policy or policies or collaborat\$ or coordinat\$ or co-ordinat\$ or cooperat\$ or co-operat\$ or integrat\$ or partnership? or partnering or network\$ or inter or multi or joint\$ or across or share? or sharing or together or communicat\$ or barrier? or facilitat\$ or deliver\$)).ti,ab.
73	((health\$ or NHS or clinical or clinician? or medical or medic? or physician? or consultant? or nurse? or general practitioner? or GP? or occupational therapist? or OT? or allied health professional? or AHP? or ((speech or language) adj3 therapist?) or SLT?) adj5 (educat\$ or school\$ or teach\$ or headmaster? or headmistress\$ or SENCO? or DfE?) adj5 (service? or department? or institution\$ or organi?ation\$ or sector\$ or agenc\$ or provider? or policy or policies or collaborat\$ or coordinat\$ or co-ordinat\$ or cooperat\$ or co-operat\$ or integrat\$ or partnership? or partnering or network\$ or inter or multi or joint\$ or across or share? or sharing or together or communicat\$ or barrier? or facilitat\$ or deliver\$)).ti,ab.
74	(social\$ adj5 (educat\$ or school\$ or teach\$ or headmaster? or headmistress\$ or SENCO? or DfE?) adj5 (service? or department? or institution\$ or organi?ation\$ or sector\$ or agenc\$ or provider? or policy or policies or collaborat\$ or coordinat\$ or co-ordinat\$ or cooperat\$ or co-operat\$ or integrat\$ or partnership? or partnering or network\$ or inter or multi or joint\$ or across or share? or sharing or together or communicat\$ or barrier? or facilitat\$ or deliver\$)).ti,ab.
75	or/72-74
76	STATE MEDICINE/og [Organization & Administration]
77	CHILD HEALTH SERVICES/og [Organization & Administration]
78	ADOLESCENT HEALTH SERVICES/og [Organization & Administration]
79	EDUCATION/og [Organization & Administration]
80	exp EDUCATION, SPECIAL/og [Organization & Administration]
81	exp SOCIAL WORK/og [Organization & Administration]
82	or/76-81
83	47 and 50
84	47 and 61
85	47 and 65 and 71
86	47 and 75
87	47 and 82

Disabled children and young people up to 25 with severe complex needs: Economic literature searches and selection (March 2022)

#	Searches
88	or/83-87
89	limit 88 to english language
90	limit 89 to yr="2000 -Current"
91	LETTER/
92	EDITORIAL/
93	NEWS/
94	exp HISTORICAL ARTICLE/
95	ANECDOTES AS TOPIC/
96	COMMENT/
97	CASE REPORT/
98	(letter or comment*).ti.
99	or/91-98
100	RANDOMIZED CONTROLLED TRIAL/ or random*.ti,ab.
101	99 not 100
102	ANIMALS/ not HUMANS/
103	exp ANIMALS, LABORATORY/
104	exp ANIMAL EXPERIMENTATION/
105	exp MODELS, ANIMAL/
106	exp RODENTIA/
107	(rat or rats or mouse or mice).ti.
108	or/101-107
109	90 not 108
110	21 and 109

Databases: Embase; and Embase Classic

Date of last search: 22/10/2019

#	Searches
1	HEALTH ECONOMICS/
2	exp ECONOMIC EVALUATION/
3	exp HEALTH CARE COST/
4	exp FEE/
5	BUDGET/
6	FUNDING/
7	RESOURCE ALLOCATION/
8	budget*.ti,ab.
9	cost*.ti,ab.
10	(economic* or pharmaco?economic*).ti,ab.
11	(price* or pricing*).ti,ab.
12	(financ* or fee or fees or expenditure* or saving*).ti,ab.
13	(value adj2 (money or monetary)).ti,ab.
14	resourc* allocat*.ti,ab.
15	(fund or funds or funding* or funded).ti,ab.
16	(ration or rations or rationing* or rationed).ti,ab.
17	or/1-16
18	exp ADOLESCENT/
19	(adolescen\$ or teen\$ or youth\$ or young or juvenile? or minors or highschool\$).ti,ab.
20	exp CHILD/
21	(child\$ or schoolchild\$ or "school age" or "school aged" or preschool\$ or toddler\$ or kid? or kindergar\$ or boy? or girl?).ti,ab.
22	exp INFANT/
23	(infan\$ or neonat\$ or newborn\$ or baby or babies).ti,ab.
24	exp PEDIATRICS/
25	p?ediatric\$.ti,ab.
26	YOUNG ADULT/
27	young\$ adult?.ti,ab.
28	or/18-27
29	exp DISABLED PERSON/
30	exp MENTAL DISEASE/
31	INTELLECTUAL IMPAIRMENT/
32	(disable? or disabilit\$ or handicap\$ or retard\$ or disorder? or impair\$ or condition? or difficulty or difficulties or deficit? or dysfunct\$).ti.
33	((sever\$ or complex\$ or special or high) adj3 need?).ti,ab.
34	SHCN.ti,ab.

Disabled children and young people up to 25 with severe complex needs: Economic literature searches and selection (March 2022)

#	Searches
35	or/29-34
36	28 and 35
37	HANDICAPPED CHILD/
38	CSHCN.ti,ab.
39	"Education Health and Care plan?".ti,ab.
40	EHC plan?.ti,ab.
41	EHCP?.ti,ab.
42	or/36-41
43	(HEALTH SERVICE/ or CHILD HEALTH CARE/ or COMMUNITY CARE/ or HOME CARE/ or MENTAL HEALTH SERVICE/ or *NURSING/ or exp HEALTH CARE PERSONNEL/) and (SOCIAL CARE/ or SOCIAL WORK/ or SOCIAL WORKER/ or SOCIAL SUPPORT/) and (EDUCATION/ or exp SPECIAL EDUCATION/ or SCHOOL/ or SCHOOL HEALTH SERVICE/ or NURSERY SCHOOL/ or NURSERY/ or KINDERGARTEN/ or PRIMARY SCHOOL/ or MIDDLE SCHOOL/ or HIGH SCHOOL/ or COLLEGE/ or COMMUNITY COLLEGE/ or UNIVERSITY/ or TEACHING/ or exp TEACHER/)
44	((health\$ or NHS or clinical or clinician? or medical or medic? or physician? or consultant? or nurse? or general practitioner? or GP? or occupational therapist? or OT? or allied health professional? or AHP? or ((speech or language) adj3 therapist?) or SLT?) adj5 social\$ adj5 (educat\$ or school\$ or teach\$ or headmaster? or headmistress\$ or SENCO? or DfE?)).ti,ab.
45	or/43-44
46	PUBLIC RELATIONS/
47	INTERSECTORAL COLLABORATION/
48	INTEGRATED HEALTH CARE SYSTEM/
49	(interinstitution\$ or multiinstitution\$ or jointinstitution\$).ti,ab.
50	(interorgani?ation\$ or multiorgani?ation\$ or jointorgani?ation\$).ti,ab.
51	(intersector\$ or multisector\$ or jointsector\$).ti,ab.
52	(interagenc\$ or multiagenc\$ or jointagenc\$).ti,ab.
53	(interprofession\$ or multiprofession\$ or jointprofession\$).ti,ab.
54	((inter or multi or joint) adj3 (institution\$ or organi?ation\$ or sector\$ or agenc\$ or profession\$)).ti,ab.
55	((institution\$ or organi?ation\$ or sector\$ or agenc\$ or profession\$ or care or service? or department\$) adj5 (collaborat\$ or coordinat\$ or co-ordinat\$ or cooperat\$ or co-operat\$ or integrat\$ or partner\$)).ti.
56	or/46-55
57	(HEALTH SERVICE/ or CHILD HEALTH CARE/ or COMMUNITY CARE/ or HOME CARE/ or MENTAL HEALTH SERVICE/ or *NURSING/ or exp HEALTH CARE PERSONNEL/) and (SOCIAL CARE/ or SOCIAL WORK/ or SOCIAL WORKER/ or SOCIAL SUPPORT/)
58	(HEALTH SERVICE/ or CHILD HEALTH CARE/ or COMMUNITY CARE/ or HOME CARE/ or MENTAL HEALTH SERVICE/ or *NURSING/ or exp HEALTH CARE PERSONNEL/) and (EDUCATION/ or exp SPECIAL EDUCATION/ or SCHOOL/ or SCHOOL HEALTH SERVICE/ or NURSERY SCHOOL/ or NURSERY/ or KINDERGARTEN/ or PRIMARY SCHOOL/ or MIDDLE SCHOOL/ or HIGH SCHOOL/ or COLLEGE/ or COMMUNITY COLLEGE/ or UNIVERSITY/ or TEACHING/ or exp TEACHER/)
59	(SOCIAL CARE/ or SOCIAL WORK/ or SOCIAL WORKER/ or SOCIAL SUPPORT/) and (EDUCATION/ or exp SPECIAL EDUCATION/ or SCHOOL/ or SCHOOL HEALTH SERVICE/ or NURSERY SCHOOL/ or NURSERY/ or KINDERGARTEN/ or PRIMARY SCHOOL/ or MIDDLE SCHOOL/ or HIGH SCHOOL/ or COLLEGE/ or COMMUNITY COLLEGE/ or UNIVERSITY/ or TEACHING/ or exp TEACHER/)
60	or/57-59
61	HEALTH CARE DELIVERY/
62	COOPERATION/
63	INTERPERSONAL COMMUNICATION/
64	or/61-63
65	((health\$ or NHS or clinical or clinician? or medical or medic? or physician? or consultant? or nurse? or general practitioner? or GP? or occupational therapist? or OT? or allied health professional? or AHP? or ((speech or language) adj3 therapist?) or SLT?) adj5 social\$ adj5 (service? or department? or institution\$ or organi?ation\$ or sector\$ or agenc\$ or provider? or policy or policies or collaborat\$ or coordinat\$ or co-ordinat\$ or cooperat\$ or co-operat\$ or integrat\$ or partnership? or partnering or network\$ or inter or multi or joint\$ or across or share? or sharing or together or communicat\$ or barrier? or facilitat\$ or deliver\$)).ti,ab.
66	((health\$ or NHS or clinical or clinician? or medical or medic? or physician? or consultant? or nurse? or general practitioner? or GP? or occupational therapist? or OT? or allied health professional? or AHP? or ((speech or language) adj3 therapist?) or SLT?) adj5 (educat\$ or school\$ or teach\$ or headmaster? or headmistress\$ or SENCO? or DfE?) adj5 (service? or department? or institution\$ or organi?ation\$ or sector\$ or agenc\$ or provider? or policy or policies or collaborat\$ or coordinat\$ or co-ordinat\$ or cooperat\$ or co-operat\$ or integrat\$ or partnership? or partnering or network\$ or inter or multi or joint\$ or across or share? or sharing or together or communicat\$ or barrier? or facilitat\$ or deliver\$)).ti,ab.
67	(social\$ adj5 (educat\$ or school\$ or teach\$ or headmaster? or headmistress\$ or SENCO? or DfE?) adj5 (service? or department? or institution\$ or organi?ation\$ or sector\$ or agenc\$ or provider? or policy or policies or collaborat\$ or coordinat\$ or co-ordinat\$ or cooperat\$ or co-operat\$ or integrat\$ or partnership? or partnering or network\$ or inter or multi or joint\$ or across or share? or sharing or together or communicat\$ or barrier? or facilitat\$ or deliver\$)).ti,ab.
68	or/65-67
69	NATIONAL HEALTH SERVICE/ and ORGANIZATION/
70	CHILD HEALTH CARE/ and ORGANIZATION/
71	EDUCATION/ and ORGANIZATION/
72	exp SPECIAL EDUCATION/ and ORGANIZATION/

Disabled children and young people up to 25 with severe complex needs: Economic literature searches and selection (March 2022)

#	Searches
73	SOCIAL WORK/ and ORGANIZATION/
74	or/69-73
75	42 and 45
76	42 and 56
77	42 and 60 and 64
78	42 and 68
79	42 and 74
80	or/75-79
81	limit 80 to english language
82	limit 81 to yr="2000 -Current"
83	letter.pt. or LETTER/
84	note.pt.
85	editorial.pt.
86	CASE REPORT/ or CASE STUDY/
87	(letter or comment*).ti.
88	or/83-87
89	RANDOMIZED CONTROLLED TRIAL/ or random*.ti,ab.
90	88 not 89
91	ANIMAL/ not HUMAN/
92	NONHUMAN/
93	exp ANIMAL EXPERIMENT/
94	exp EXPERIMENTAL ANIMAL/
95	ANIMAL MODEL/
96	exp RODENT/
97	(rat or rats or mouse or mice).ti.
98	or/90-97
99	82 not 98
100	17 and 99

Database: Health Management Information Consortium (HMIC)

Date of last search: 22/10/2019

#	Searches
1	budget*.ti,ab.
2	cost*.ti,ab.
3	(economic* or pharmaco?economic*).ti,ab.
4	(price* or pricing*).ti,ab.
5	(financ* or fee or fees or expenditure* or saving*).ti,ab.
6	(value adj2 (money or monetary)).ti,ab.
7	resourc* allocat*.ti,ab.
8	(fund or funds or funding* or funded).ti,ab.
9	(ration or rations or rationing* or rationed).ti,ab.
10	or/1-9
11	exp YOUNG PEOPLE/
12	(adolescen\$ or teen\$ or youth\$ or young or juvenile? or minors or highschool\$).ti,ab.
13	exp CHILDREN/
14	(child\$ or schoolchild\$ or "school age" or "school aged" or preschool\$ or toddler\$ or kid? or kindergar\$ or boy? or girl?).ti,ab.
15	(infan\$ or neonat\$ or newborn\$ or baby or babies).ti,ab.
16	exp PAEDIATRICS/
17	p?ediatric\$.ti,ab.
18	YOUNG ADULTS/
19	young\$ adult?.ti,ab.
20	or/11-19
21	DISABLED PEOPLE/
22	exp DISABILITIES/
23	(disable? or disabilit\$ or handicap\$ or retard\$ or disorder? or impair\$ or condition? or difficulty or difficulties or deficit? or dysfunct\$.ti.
24	((sever\$ or complex\$ or special or high) adj3 need?).ti,ab.
25	SHCN.ti,ab.
26	or/21-25
27	20 and 26
28	CSHCN.ti,ab.
29	"Education Health and Care plan?".ti,ab.

Disabled children and young people up to 25 with severe complex needs: Economic literature searches and selection (March 2022)

#	Searches
30	EHC plan?.ti,ab.
31	EHCP?.ti,ab.
32	or/27-31
33	(HEALTH SERVICES/ or exp CHILD HEALTH SERVICES/ or COMMUNITY HEALTH SERVICES/ or exp MENTAL HEALTH SERVICES/ or NURSING CARE/ or exp HEALTH SERVICE STAFF/) and (exp SOCIAL WORK/ or SOCIAL WORK SERVICE/ or SOCIAL WORK PROFESSION/ or SOCIAL WORKERS/ or exp SOCIAL WORKER TEAMS/ or SOCIAL CARE/ or exp SOCIAL CARE SERVICES/ or SOCIAL SERVICES/ or SOCIAL SERVICES DEPARTMENTS/ or SOCIAL SUPPORT/ or SUPPORTIVE SOCIAL WORK/) and (EDUCATION/ or PRIMARY EDUCATION/ or SECONDARY EDUCATION/ or exp SPECIAL EDUCATION/ or exp SCHOOLS/ or exp SCHOOL HEALTH SERVICES/ or exp NURSERIES/ or UNIVERSITIES/ or TEACHING/ or REMEDIAL TEACHING/ or TEACHERS/)
34	((health\$ or NHS or clinical or clinician? or medical or medic? or physician? or consultant? or nurse? or general practitioner? or GP? or occupational therapist? or OT? or allied health professional? or AHP? or ((speech or language) adj3 therapist?) or SLT?) and social\$ and (educat\$ or school\$ or teach\$ or headmaster? or headmistress\$ or SENCO? or DfE?)).ti,ab.
35	or/33-34
36	COLLABORATION/
37	exp INTERAGENCY COLLABORATION/
38	INTERPROFESSIONAL COLLABORATION/
39	COLLABORATIVE CARE/
40	INTEGRATED PROVIDERS/
41	INTEGRATED CARE/
42	INTERDISCIPLINARY SERVICES/
43	JOINT WORKING/
44	HEALTH & SOCIAL SERVICES INTERACTION/
45	COMMUNICATION/
46	HEALTH SERVICE PROVISION/
47	(interinstitution\$ or multiinstitution\$ or jointinstitution\$).ti,ab.
48	(interorgani?ation\$ or multiorgani?ation\$ or jointorgani?ation\$).ti,ab.
49	(intersector\$ or multisector\$ or jointsector\$).ti,ab.
50	(interagenc\$ or multiagenc\$ or jointagenc\$).ti,ab.
51	(interprofession\$ or multiprofession\$ or jointprofession\$).ti,ab.
52	((inter or multi or joint) adj3 (institution\$ or organi?ation\$ or sector\$ or agenc\$ or profession\$)).ti,ab.
53	((institution\$ or organi?ation\$ or sector\$ or agenc\$ or profession\$ or care or service? or department\$) adj5 (collaborat\$ or coordinat\$ or co-ordinat\$ or cooperat\$ or co-operat\$ or integrat\$ or partner\$)).ti.
54	or/36-53
55	(HEALTH SERVICES/ or exp CHILD HEALTH SERVICES/ or COMMUNITY HEALTH SERVICES/ or exp MENTAL HEALTH SERVICES/ or NURSING CARE/ or exp HEALTH SERVICE STAFF/) and (exp SOCIAL WORK/ or SOCIAL WORK SERVICE/ or SOCIAL WORK PROFESSION/ or SOCIAL WORKERS/ or exp SOCIAL WORKER TEAMS/ or SOCIAL CARE/ or exp SOCIAL CARE SERVICES/ or SOCIAL SERVICES/ or SOCIAL SERVICES DEPARTMENTS/ or SOCIAL SUPPORT/ or SUPPORTIVE SOCIAL WORK/)
56	(HEALTH SERVICES/ or exp CHILD HEALTH SERVICES/ or COMMUNITY HEALTH SERVICES/ or exp MENTAL HEALTH SERVICES/ or NURSING CARE/ or exp HEALTH SERVICE STAFF/) and (EDUCATION/ or PRIMARY EDUCATION/ or SECONDARY EDUCATION/ or exp SPECIAL EDUCATION/ or exp SCHOOLS/ or exp SCHOOL HEALTH SERVICES/ or exp NURSERIES/ or UNIVERSITIES/ or TEACHING/ or REMEDIAL TEACHING/ or TEACHERS/)
57	(exp SOCIAL WORK/ or SOCIAL WORK SERVICE/ or SOCIAL WORK PROFESSION/ or SOCIAL WORKERS/ or exp SOCIAL WORKER TEAMS/ or SOCIAL CARE/ or exp SOCIAL CARE SERVICES/ or SOCIAL SERVICES/ or SOCIAL SERVICES DEPARTMENTS/ or SOCIAL SUPPORT/ or SUPPORTIVE SOCIAL WORK/) and (EDUCATION/ or PRIMARY EDUCATION/ or SECONDARY EDUCATION/ or exp SPECIAL EDUCATION/ or exp SCHOOLS/ or exp SCHOOL HEALTH SERVICES/ or exp NURSERIES/ or UNIVERSITIES/ or TEACHING/ or REMEDIAL TEACHING/ or TEACHERS/)
58	or/55-57
59	((health\$ or NHS or clinical or clinician? or medical or medic? or physician? or consultant? or nurse? or general practitioner? or GP? or occupational therapist? or OT? or allied health professional? or AHP? or ((speech or language) adj3 therapist?) or SLT?) adj5 social\$).ti,ab.
60	((health\$ or NHS or clinical or clinician? or medical or medic? or physician? or consultant? or nurse? or general practitioner? or GP? or occupational therapist? or OT? or allied health professional? or AHP? or ((speech or language) adj3 therapist?) or SLT?) adj5 (educat\$ or school\$ or teach\$ or headmaster? or headmistress\$ or SENCO? or DfE?)).ti,ab.
61	(social\$ adj5 (educat\$ or school\$ or teach\$ or headmaster? or headmistress\$ or SENCO? or DfE?)).ti,ab.
62	or/59-61
63	32 and 35
64	32 and 54
65	32 and 58
66	32 and 62
67	or/63-66
68	limit 67 to yr="2000 -Current"
69	10 and 68

Database: Social Policy and Practice

Date of last search: 22/10/2019

#	Searches
1	budget*.ti,ab.
2	cost*.ti,ab.
3	(economic* or pharmaco?economic*).ti,ab.
4	(price* or pricing*).ti,ab.
5	(financ* or fee or fees or expenditure* or saving*).ti,ab.
6	(value adj2 (money or monetary)).ti,ab.
7	resourc* allocat*.ti,ab.
8	(fund or funds or funding* or funded).ti,ab.
9	(ration or rations or rationing* or rationed).ti,ab.
10	or/1-9
11	(adolescen\$ or teen\$ or youth\$ or young or juvenile? or minors or highschool\$).ti,ab.
12	(child\$ or schoolchild\$ or "school age" or "school aged" or preschool\$ or toddler\$ or kid? or kindergar\$ or boy? or girl?).ti,ab.
13	(infan\$ or neonat\$ or newborn\$ or baby or babies).ti,ab.
14	p?ediatric\$.ti,ab.
15	young\$ adult?.ti,ab.
16	or/11-15
17	(disable? or disabilit\$ or handicap\$ or retard\$ or disorder? or impair\$ or condition? or difficulty or difficulties or deficit? or dysfunct\$.ti.
18	((sever\$ or complex\$ or special or high) adj3 need?).ti,ab.
19	SHCN.ti,ab.
20	or/17-19
21	16 and 20
22	CSHCN.ti,ab.
23	"Education Health and Care plan?".ti,ab.
24	EHC plan?.ti,ab.
25	EHCP?.ti,ab.
26	or/21-25
27	((health\$ or NHS or clinical or clinician? or medical or medic? or physician? or consultant? or nurse? or general practitioner? or GP? or occupational therapist? or OT? or allied health professional? or AHP? or ((speech or language) adj3 therapist?) or SLT?) and social\$ and (educat\$ or school\$ or teach\$ or headmaster? or headmistress\$ or SENCO? or DfE?)).ti,ab.
28	(interinstitution\$ or multiinstitution\$ or jointinstitution\$).ti,ab.
29	(interorgani?ation\$ or multiorgani?ation\$ or jointorgani?ation\$).ti,ab.
30	(intersector\$ or multisector\$ or jointsector\$).ti,ab.
31	(interagenc\$ or multiagenc\$ or jointagenc\$).ti,ab.
32	(interprofession\$ or multiprofession\$ or jointprofession\$).ti,ab.
33	((inter or multi or joint) adj3 (institution\$ or organi?ation\$ or sector\$ or agenc\$ or profession\$)).ti,ab.
34	((institution\$ or organi?ation\$ or sector\$ or agenc\$ or profession\$ or care or service? or department\$) adj5 (collaborat\$ or coordinat\$ or co-ordinat\$ or cooperat\$ or co-operat\$ or integrat\$ or partner\$)).ti.
35	or/28-34
36	((health\$ or NHS or clinical or clinician? or medical or medic? or physician? or consultant? or nurse? or general practitioner? or GP? or occupational therapist? or OT? or allied health professional? or AHP? or ((speech or language) adj3 therapist?) or SLT?) adj5 social\$).ti,ab.
37	((health\$ or NHS or clinical or clinician? or medical or medic? or physician? or consultant? or nurse? or general practitioner? or GP? or occupational therapist? or OT? or allied health professional? or AHP? or ((speech or language) adj3 therapist?) or SLT?) adj5 (educat\$ or school\$ or teach\$ or headmaster? or headmistress\$ or SENCO? or DfE?)).ti,ab.
38	(social\$ adj5 (educat\$ or school\$ or teach\$ or headmaster? or headmistress\$ or SENCO? or DfE?)).ti,ab.
39	or/36-38
40	26 and 27
41	26 and 35
42	26 and 39
43	or/40-42
44	limit 43 to yr="2000 -Current"
45	10 and 44

Database: PsycInfo**Date of last search: 22/10/2019**

#	Searches
1	budget*.ti,ab.
2	cost*.ti,ab.
3	(economic* or pharmaco?economic*).ti,ab.
4	(price* or pricing*).ti,ab.
5	(financ* or fee or fees or expenditure* or saving*).ti,ab.
6	(value adj2 (money or monetary)).ti,ab.
7	resourc* allocat*.ti,ab.
8	(fund or funds or funding* or funded).ti,ab.
9	(ration or rations or rationing* or rationed).ti,ab.
10	or/1-9
11	(adolescen\$ or teen\$ or youth\$ or young or juvenile? or minors or highschool\$).ti,ab.
12	(child\$ or schoolchild\$ or "school age" or "school aged" or preschool\$ or toddler\$ or kid? or kindergar\$ or boy? or girl?).ti,ab.
13	(infan\$ or neonat\$ or newborn\$ or baby or babies).ti,ab.
14	PEDIATRICS/
15	p?ediatric\$.ti,ab.
16	young\$ adult?.ti,ab.
17	or/11-16
18	DISORDERS/
19	exp DISABILITIES/
20	PHYSICAL DISORDERS/
21	exp SENSE ORGAN DISORDERS/
22	exp MENTAL DISORDERS/
23	exp COMMUNICATION DISORDERS/
24	SPECIAL NEEDS/
25	(disable? or disabilit\$ or handicap\$ or retard\$ or disorder? or impair\$ or condition? or difficulty or difficulties or deficit? or dysfunct\$).ti.
26	((sever\$ or complex\$ or special or high) adj3 need?).ti,ab.
27	SHCN.ti,ab.
28	or/18-27
29	17 and 28
30	CSHCN.ti,ab.
31	"Education Health and Care plan?".ti,ab.
32	EHC plan?.ti,ab.
33	EHCP?.ti,ab.
34	or/29-33
35	(HEALTH CARE SERVICES/ or COMMUNITY SERVICES/ or HOME CARE/ or MENTAL HEALTH SERVICES/ or COMMUNITY MENTAL HEALTH SERVICES/ or NURSING/ or exp HEALTH PERSONNEL/) and (exp SOCIAL CASEWORK/ or exp SOCIAL WORKERS/ or SOCIAL SUPPORT/) and (EDUCATION/ or ELEMENTARY EDUCATION/ or MIDDLE SCHOOL EDUCATION/ or HIGH SCHOOL EDUCATION/ or SECONDARY EDUCATION/ or HIGHER EDUCATION/ or SPECIAL EDUCATION/ or "MAINSTREAMING (EDUCATIONAL)"/ or REMEDIAL EDUCATION/ or exp SCHOOLS/ or TEACHING/ or TEACHERS/ or PRESCHOOL TEACHERS/ or ELEMENTARY SCHOOL TEACHERS/ or JUNIOR HIGH SCHOOL TEACHERS/ or MIDDLE SCHOOL TEACHERS/ or HIGH SCHOOL TEACHERS/ or COLLEGE TEACHERS/ or VOCATIONAL EDUCATION TEACHERS/ or SPECIAL EDUCATION TEACHERS/)
36	((health\$ or NHS or clinical or clinician? or medical or medic? or physician? or consultant? or nurse? or general practitioner? or GP? or occupational therapist? or OT? or allied health professional? or AHP? or ((speech or language) adj3 therapist?) or SLT?) adj5 social\$ adj5 (educat\$ or school\$ or teach\$ or headmaster? or headmistress\$ or SENCO? or Dfe?).ti,ab.
37	or/35-36
38	INTEGRATED SERVICES/
39	INTERDISCIPLINARY TREATMENT APPROACH/
40	(interinstitution\$ or multiinstitution\$ or jointinstitution\$).ti,ab.
41	(interorgani?ation\$ or multiorgani?ation\$ or jointorgani?ation\$).ti,ab.
42	(intersector\$ or multisector\$ or jointsector\$).ti,ab.
43	(interagenc\$ or multiagenc\$ or jointagenc\$).ti,ab.
44	(interprofession\$ or multiprofession\$ or jointprofession\$).ti,ab.
45	((inter or multi or joint) adj3 (institution\$ or organi?ation\$ or sector\$ or agenc\$ or profession\$)).ti,ab.
46	((institution\$ or organi?ation\$ or sector\$ or agenc\$ or profession\$ or care or service? or department\$) adj5 (collaborat\$ or coordinat\$ or co-ordinat\$ or cooperat\$ or co-operat\$ or integrat\$ or partner\$)).ti.
47	or/38-46
48	(HEALTH CARE SERVICES/ or COMMUNITY SERVICES/ or HOME CARE/ or MENTAL HEALTH SERVICES/ or COMMUNITY MENTAL HEALTH SERVICES/ or NURSING/ or exp HEALTH PERSONNEL/) and (exp SOCIAL CASEWORK/ or exp SOCIAL WORKERS/ or SOCIAL SUPPORT/)

Disabled children and young people up to 25 with severe complex needs: Economic literature searches and selection (March 2022)

#	Searches
49	(HEALTH CARE SERVICES/ or COMMUNITY SERVICES/ or HOME CARE/ or MENTAL HEALTH SERVICES/ or COMMUNITY MENTAL HEALTH SERVICES/ or NURSING/ or exp HEALTH PERSONNEL/) and (EDUCATION/ or ELEMENTARY EDUCATION/ or MIDDLE SCHOOL EDUCATION/ or HIGH SCHOOL EDUCATION/ or SECONDARY EDUCATION/ or HIGHER EDUCATION/ or SPECIAL EDUCATION/ or "MAINSTREAMING (EDUCATIONAL)"/ or REMEDIAL EDUCATION/ or exp SCHOOLS/ or TEACHING/ or TEACHERS/ or PRESCHOOL TEACHERS/ or ELEMENTARY SCHOOL TEACHERS/ or JUNIOR HIGH SCHOOL TEACHERS/ or MIDDLE SCHOOL TEACHERS/ or HIGH SCHOOL TEACHERS/ or COLLEGE TEACHERS/ or VOCATIONAL EDUCATION TEACHERS/ or SPECIAL EDUCATION TEACHERS/)
50	(exp SOCIAL CASEWORK/ or exp SOCIAL WORKERS/ or SOCIAL SUPPORT/) and (EDUCATION/ or ELEMENTARY EDUCATION/ or MIDDLE SCHOOL EDUCATION/ or HIGH SCHOOL EDUCATION/ or SECONDARY EDUCATION/ or HIGHER EDUCATION/ or SPECIAL EDUCATION/ or "MAINSTREAMING (EDUCATIONAL)"/ or REMEDIAL EDUCATION/ or exp SCHOOLS/ or TEACHING/ or TEACHERS/ or PRESCHOOL TEACHERS/ or ELEMENTARY SCHOOL TEACHERS/ or JUNIOR HIGH SCHOOL TEACHERS/ or MIDDLE SCHOOL TEACHERS/ or HIGH SCHOOL TEACHERS/ or COLLEGE TEACHERS/ or VOCATIONAL EDUCATION TEACHERS/ or SPECIAL EDUCATION TEACHERS/)
51	or/48-50
52	HEALTH SERVICE NEEDS/
53	HEALTH CARE DELIVERY/
54	COOPERATION/
55	COLLABORATION/
56	COMMUNICATION/
57	or/52-56
58	((health\$ or NHS or clinical or clinician? or medical or medic? or physician? or consultant? or nurse? or general practitioner? or GP? or occupational therapist? or OT? or allied health professional? or AHP? or ((speech or language) adj3 therapist?) or SLT?) adj5 social\$ adj5 (service? or department? or institution\$ or organi?ation\$ or sector\$ or agenc\$ or provider? or policy or policies or collaborat\$ or coordinat\$ or co-ordinat\$ or cooperat\$ or co-operat\$ or integrat\$ or partnership? or partnering or network\$ or inter or multi or joint\$ or across or share? or sharing or together or communicat\$ or barrier? or facilitat\$ or deliver\$)).ti,ab.
59	((health\$ or NHS or clinical or clinician? or medical or medic? or physician? or consultant? or nurse? or general practitioner? or GP? or occupational therapist? or OT? or allied health professional? or AHP? or ((speech or language) adj3 therapist?) or SLT?) adj5 (educat\$ or school\$ or teach\$ or headmaster? or headmistress\$ or SENCO? or DfE?) adj5 (service? or department? or institution\$ or organi?ation\$ or sector\$ or agenc\$ or provider? or policy or policies or collaborat\$ or coordinat\$ or co-ordinat\$ or cooperat\$ or co-operat\$ or integrat\$ or partnership? or partnering or network\$ or inter or multi or joint\$ or across or share? or sharing or together or communicat\$ or barrier? or facilitat\$ or deliver\$)).ti,ab.
60	(social\$ adj5 (educat\$ or school\$ or teach\$ or headmaster? or headmistress\$ or SENCO? or DfE?) adj5 (service? or department? or institution\$ or organi?ation\$ or sector\$ or agenc\$ or provider? or policy or policies or collaborat\$ or coordinat\$ or co-ordinat\$ or cooperat\$ or co-operat\$ or integrat\$ or partnership? or partnering or network\$ or inter or multi or joint\$ or across or share? or sharing or together or communicat\$ or barrier? or facilitat\$ or deliver\$)).ti,ab.
61	or/58-60
62	34 and 37
63	34 and 47
64	34 and 51 and 57
65	34 and 61
66	or/62-65
67	limit 66 to english language
68	limit 67 to yr="2000 -Current"
69	10 and 68
70	limit 69 to ("0100 journal" or "0110 peer-reviewed journal" or "0120 non-peer-reviewed journal")

Database: Emcare

Date of last search: 22/10/2019

#	Searches
1	HEALTH ECONOMICS/
2	exp ECONOMIC EVALUATION/
3	exp HEALTH CARE COST/
4	exp FEE/
5	BUDGET/
6	FUNDING/
7	RESOURCE ALLOCATION/
8	budget*.ti,ab.
9	cost*.ti,ab.
10	(economic* or pharmaco?economic*).ti,ab.
11	(price* or pricing*).ti,ab.
12	(financ* or fee or fees or expenditure* or saving*).ti,ab.

Disabled children and young people up to 25 with severe complex needs: Economic literature searches and selection (March 2022)

#	Searches
13	(value adj2 (money or monetary)).ti,ab.
14	resourc* allocat*.ti,ab.
15	(fund or funds or funding* or funded).ti,ab.
16	(ration or rations or rationing* or rationed).ti,ab.
17	or/1-16
18	exp ADOLESCENT/
19	(adolescen\$ or teen\$ or youth\$ or young or juvenile? or minors or highschool\$).ti,ab.
20	exp CHILD/
21	(child\$ or schoolchild\$ or "school age" or "school aged" or preschool\$ or toddler\$ or kid? or kindergar\$ or boy? or girl?).ti,ab.
22	exp INFANT/
23	(infan\$ or neonat\$ or newborn\$ or baby or babies).ti,ab.
24	exp PEDIATRICS/
25	p?ediatric\$.ti,ab.
26	YOUNG ADULT/
27	young\$ adult?.ti,ab.
28	or/18-27
29	exp DISABLED PERSON/
30	exp MENTAL DISEASE/
31	INTELLECTUAL IMPAIRMENT/
32	(disable? or disabilit\$ or handicap\$ or retard\$ or disorder? or impair\$ or condition? or difficulty or difficulties or deficit? or dysfunct\$).ti.
33	((sever\$ or complex\$ or special or high) adj3 need?).ti,ab.
34	SHCN.ti,ab.
35	or/29-34
36	28 and 35
37	HANDICAPPED CHILD/
38	CSHCN.ti,ab.
39	"Education Health and Care plan?".ti,ab.
40	EHC plan?.ti,ab.
41	EHCP?.ti,ab.
42	or/36-41
43	(HEALTH SERVICE/ or CHILD HEALTH CARE/ or COMMUNITY CARE/ or HOME CARE/ or MENTAL HEALTH SERVICE/ or *NURSING/ or exp HEALTH CARE PERSONNEL/) and (SOCIAL CARE/ or SOCIAL WORK/ or SOCIAL WORKER/ or SOCIAL SUPPORT/) and (EDUCATION/ or exp SPECIAL EDUCATION/ or SCHOOL/ or SCHOOL HEALTH SERVICE/ or NURSERY SCHOOL/ or NURSERY/ or KINDERGARTEN/ or PRIMARY SCHOOL/ or MIDDLE SCHOOL/ or HIGH SCHOOL/ or COLLEGE/ or COMMUNITY COLLEGE/ or UNIVERSITY/ or TEACHING/ or exp TEACHER/)
44	((health\$ or NHS or clinical or clinician? or medical or medic? or physician? or consultant? or nurse? or general practitioner? or GP? or occupational therapist? or OT? or allied health professional? or AHP? or ((speech or language) adj3 therapist?) or SLT?) adj5 social\$ adj5 (educat\$ or school\$ or teach\$ or headmaster? or headmistress\$ or SENCO? or DfE?).ti,ab.
45	or/43-44
46	PUBLIC RELATIONS/
47	INTERSECTORAL COLLABORATION/
48	INTEGRATED HEALTH CARE SYSTEM/
49	(interinstitution\$ or multiinstitution\$ or jointinstitution\$).ti,ab.
50	(interorgani?ation\$ or multiorgani?ation\$ or jointorgani?ation\$).ti,ab.
51	(intersector\$ or multisector\$ or jointsector\$).ti,ab.
52	(interagenc\$ or multiagenc\$ or jointagenc\$).ti,ab.
53	(interprofession\$ or multiprofession\$ or jointprofession\$).ti,ab.
54	((inter or multi or joint) adj3 (institution\$ or organi?ation\$ or sector\$ or agenc\$ or profession\$)).ti,ab.
55	((institution\$ or organi?ation\$ or sector\$ or agenc\$ or profession\$ or care or service? or department\$) adj5 (collaborat\$ or coordinat\$ or co-ordinat\$ or cooperat\$ or co-operat\$ or integrat\$ or partner\$)).ti.
56	or/46-55
57	(HEALTH SERVICE/ or CHILD HEALTH CARE/ or COMMUNITY CARE/ or HOME CARE/ or MENTAL HEALTH SERVICE/ or *NURSING/ or exp HEALTH CARE PERSONNEL/) and (SOCIAL CARE/ or SOCIAL WORK/ or SOCIAL WORKER/ or SOCIAL SUPPORT/)
58	(HEALTH SERVICE/ or CHILD HEALTH CARE/ or COMMUNITY CARE/ or HOME CARE/ or MENTAL HEALTH SERVICE/ or *NURSING/ or exp HEALTH CARE PERSONNEL/) and (EDUCATION/ or exp SPECIAL EDUCATION/ or SCHOOL/ or SCHOOL HEALTH SERVICE/ or NURSERY SCHOOL/ or NURSERY/ or KINDERGARTEN/ or PRIMARY SCHOOL/ or MIDDLE SCHOOL/ or HIGH SCHOOL/ or COLLEGE/ or COMMUNITY COLLEGE/ or UNIVERSITY/ or TEACHING/ or exp TEACHER/)
59	(SOCIAL CARE/ or SOCIAL WORK/ or SOCIAL WORKER/ or SOCIAL SUPPORT/) and (EDUCATION/ or exp SPECIAL EDUCATION/ or SCHOOL/ or SCHOOL HEALTH SERVICE/ or NURSERY SCHOOL/ or NURSERY/ or KINDERGARTEN/ or PRIMARY SCHOOL/ or MIDDLE SCHOOL/ or HIGH SCHOOL/ or COLLEGE/ or COMMUNITY COLLEGE/ or UNIVERSITY/ or TEACHING/ or exp TEACHER/)
60	or/57-59
61	HEALTH CARE DELIVERY/

Disabled children and young people up to 25 with severe complex needs: Economic literature searches and selection (March 2022)

#	Searches
62	COOPERATION/
63	INTERPERSONAL COMMUNICATION/
64	or/61-63
65	((health\$ or NHS or clinical or clinician? or medical or medic? or physician? or consultant? or nurse? or general practitioner? or GP? or occupational therapist? or OT? or allied health professional? or AHP? or ((speech or language) adj3 therapist?) or SLT?) adj5 social\$ adj5 (service? or department? or institution\$ or organi?ation\$ or sector\$ or agenc\$ or provider? or policy or policies or collaborat\$ or coordinat\$ or co-ordinat\$ or cooperat\$ or co-operat\$ or integrat\$ or partnership? or partnering or network\$ or inter or multi or joint\$ or across or share? or sharing or together or communicat\$ or barrier? or facilitat\$ or deliver\$)).ti,ab.
66	((health\$ or NHS or clinical or clinician? or medical or medic? or physician? or consultant? or nurse? or general practitioner? or GP? or occupational therapist? or OT? or allied health professional? or AHP? or ((speech or language) adj3 therapist?) or SLT?) adj5 (educat\$ or school\$ or teach\$ or headmaster? or headmistress\$ or SENCO? or DfE?) adj5 (service? or department? or institution\$ or organi?ation\$ or sector\$ or agenc\$ or provider? or policy or policies or collaborat\$ or coordinat\$ or co-ordinat\$ or cooperat\$ or co-operat\$ or integrat\$ or partnership? or partnering or network\$ or inter or multi or joint\$ or across or share? or sharing or together or communicat\$ or barrier? or facilitat\$ or deliver\$)).ti,ab.
67	(social\$ adj5 (educat\$ or school\$ or teach\$ or headmaster? or headmistress\$ or SENCO? or DfE?) adj5 (service? or department? or institution\$ or organi?ation\$ or sector\$ or agenc\$ or provider? or policy or policies or collaborat\$ or coordinat\$ or co-ordinat\$ or cooperat\$ or co-operat\$ or integrat\$ or partnership? or partnering or network\$ or inter or multi or joint\$ or across or share? or sharing or together or communicat\$ or barrier? or facilitat\$ or deliver\$)).ti,ab.
68	or/65-67
69	NATIONAL HEALTH SERVICE/ and ORGANIZATION/
70	CHILD HEALTH CARE/ and ORGANIZATION/
71	EDUCATION/ and ORGANIZATION/
72	exp SPECIAL EDUCATION/ and ORGANIZATION/
73	SOCIAL WORK/ and ORGANIZATION/
74	or/69-73
75	42 and 45
76	42 and 56
77	42 and 60 and 64
78	42 and 68
79	42 and 74
80	or/75-79
81	limit 80 to english language
82	limit 81 to yr="2000 -Current"
83	17 and 82

Databases: Cochrane Central Register of Controlled Trials (CCTR)

Date of last search: 22/10/2019

#	Searches
#1	MeSH descriptor: [Economics] this term only
#2	MeSH descriptor: [Value of Life] this term only
#3	MeSH descriptor: [Costs and Cost Analysis] explode all trees
#4	MeSH descriptor: [Economics, Hospital] explode all trees
#5	MeSH descriptor: [Economics, Medical] explode all trees
#6	MeSH descriptor: [Resource Allocation] explode all trees
#7	MeSH descriptor: [Economics, Nursing] this term only
#8	MeSH descriptor: [Economics, Pharmaceutical] this term only
#9	MeSH descriptor: [Fees and Charges] explode all trees
#10	MeSH descriptor: [Budgets] explode all trees
#11	budget*.ti,ab
#12	cost*.ti,ab
#13	(economic* or pharmaco?economic*).ti,ab
#14	(price* or pricing*).ti,ab
#15	(financ* or fee or fees or expenditure* or saving*).ti,ab
#16	(value near/2 (money or monetary)).ti,ab
#17	resourc* allocat*.ti,ab
#18	(fund or funds or funding* or funded).ti,ab
#19	(ration or rations or rationing* or rationed) .ti,ab.
#20	#1 or #2 or #3 or #4 or #5 or #6 or #7 or #8 or #9 or #10 or #11 or #12 or #13 or #14 or #15 or #16 or #17 or #18 or #19
#21	[mh ^"ADOLESCENT"]
#22	[mh ^"MINORS"]
#23	(adolescen* or teen* or youth* or young or juvenile* or minors or highschool*).ti,ab

Disabled children and young people up to 25 with severe complex needs: Economic literature searches and selection (March 2022)

#	Searches
#24	[mh "CHILD"]
#25	(child* or schoolchild* or "school age" or "school aged" or preschool* or toddler* or kid* or kindergar* or boy* or girl*):ti,ab
#26	[mh "INFANT"]
#27	(infan* or neonat* or newborn* or baby or babies):ti,ab
#28	[mh "PEDIATRICS"]
#29	(pediatric* or paediatric*):ti,ab
#30	[mh ^"YOUNG ADULT"]
#31	"young\$ adult*":ti,ab
#32	#21 or #22 or #23 or #24 or #25 or #26 or #27 or #28 or #29 or #30 or #31
#33	[mh "DISABLED PERSONS"]
#34	[mh "MENTAL DISORDERS"]
#35	[mh "COMMUNICATION DISORDERS"]
#36	[mh "INTELLECTUAL DISABILITY"]
#37	(disable* or disabilit* or handicap* or retard* or disorder* or impair* or condition* or difficulty or difficulties or deficit* or dysfunct*):ti
#38	((sever* or complex* or special or high) near/3 (need or needs)):ti,ab
#39	SHCN:ti,ab
#40	#33 or #34 or #35 or #36 or #37 or #38 or #39
#41	#32 and #40
#42	[mh ^"DISABLED CHILDREN"]
#43	CSHCN:ti,ab
#44	"Education Health and Care plan*":ti,ab
#45	EHC plan*:ti,ab
#46	EHCP*:ti,ab
#47	#41 or #42 or #43 or #44 or #45 or #46
#48	([mh ^"HEALTH SERVICES"] or [mh ^"CHILD HEALTH SERVICES"] or [mh ^"ADOLESCENT HEALTH SERVICES"] or [mh ^"COMMUNITY HEALTH SERVICES"] or [mh ^"HOME CARE SERVICES"] or [mh ^"HEALTH SERVICES FOR PEOPLE WITH DISABILITIES"] or [mh ^"MENTAL HEALTH SERVICES"] or [mh ^"NURSING SERVICES"] or [mh ^"HEALTH PERSONNEL"]) and ([mh "SOCIAL WORK"] or [mh ^"SOCIAL WORK, PSYCHIATRIC"] or [mh ^"SOCIAL WORKERS"] or [mh ^"SOCIAL SUPPORT"]) and ([mh ^EDUCATION] or [mh "EDUCATION, SPECIAL"] or [mh ^SCHOOLS] or [mh ^"SCHOOL HEALTH SERVICES"] or [mh ^"SCHOOLS, NURSERY"] or [mh NURSERIES] or [mh ^"CHILD DAY CARE CENTERS"] or [mh ^UNIVERSITIES] or [mh ^TEACHING] or [mh ^"REMEDIAL TEACHING"] or [mh ^"SCHOOL TEACHERS"])
#49	((health* or NHS or clinical or clinician* or medical or medic or medics or physician* or consultant* or nurse* or "general practitioner*" or GP or GPs or "occupational therapist*" or OT or OTs or "allied health professional*" or AHP or AHPs or (speech or language) near/3 therapist*) or SLT or SLTs) near/5 social* near/5 (educat* or school* or teach* or headmaster* or headmistress* or SENCO or SENCOs or Dfe*):ti,ab
#50	#48 or #49
#51	[mh ^"INTERINSTITUTIONAL RELATIONS"]
#52	[mh ^"INTERSECTORAL COLLABORATION"]
#53	[mh ^"DELIVERY OF HEALTH CARE, INTEGRATED"]
#54	(interinstitution* or multiinstitution* or jointinstitution*):ti,ab
#55	(interorganisation* or interorganization* or multiorganisation* or multiorganization* or jointorganisation* or jointorganization*):ti,ab
#56	(intersector* or multisector* or jointsector*):ti,ab
#57	(interagenc* or multiagenc* or jointagenc*):ti,ab
#58	(interprofession* or multiprofession* or jointprofession*):ti,ab
#59	((inter or multi or joint) near/3 (institution* or organisation* or organization* or sector* or agenc* or profession*)):ti,ab
#60	((institution* or organisation* or organization* or sector* or agenc* or profession* or care or service* or department*) near/5 (collaborat* or coordinat* or co-ordinat* or cooperat* or co-operat* or integrat* or partner*)):ti
#61	#51 or #52 or #53 or #54 or #55 or #56 or #57 or #58 or #59 or #60
#62	([mh ^"HEALTH SERVICES"] or [mh ^"CHILD HEALTH SERVICES"] or [mh ^"ADOLESCENT HEALTH SERVICES"] or [mh ^"COMMUNITY HEALTH SERVICES"] or [mh ^"HOME CARE SERVICES"] or [mh ^"HEALTH SERVICES FOR PEOPLE WITH DISABILITIES"] or [mh ^"MENTAL HEALTH SERVICES"] or [mh ^"NURSING SERVICES"] or [mh "HEALTH PERSONNEL"]) and ([mh "SOCIAL WORK"] or [mh ^"SOCIAL WORK, PSYCHIATRIC"] or [mh ^"SOCIAL WORKERS"] or [mh ^"SOCIAL SUPPORT"])
#63	([mh ^"HEALTH SERVICES"] or [mh ^"CHILD HEALTH SERVICES"] or [mh ^"ADOLESCENT HEALTH SERVICES"] or [mh ^"COMMUNITY HEALTH SERVICES"] or [mh ^"HOME CARE SERVICES"] or [mh ^"HEALTH SERVICES FOR PEOPLE WITH DISABILITIES"] or [mh ^"MENTAL HEALTH SERVICES"] or [mh ^"NURSING SERVICES"] or [mh "HEALTH PERSONNEL"]) and ([mh ^EDUCATION] or [mh "EDUCATION, SPECIAL"] or [mh ^SCHOOLS] or [mh ^"SCHOOL HEALTH SERVICES"] or [mh ^"SCHOOLS, NURSERY"] or [mh NURSERIES] or [mh ^"CHILD DAY CARE CENTERS"] or [mh ^UNIVERSITIES] or [mh ^TEACHING] or [mh ^"REMEDIAL TEACHING"] or [mh ^"SCHOOL TEACHERS"])
#64	([mh "SOCIAL WORK"] or [mh ^"SOCIAL WORK, PSYCHIATRIC"] or [mh ^"SOCIAL WORKERS"] or [mh ^"SOCIAL SUPPORT"]) and ([mh ^EDUCATION] or [mh "EDUCATION, SPECIAL"] or [mh ^SCHOOLS] or [mh ^"SCHOOL HEALTH SERVICES"] or [mh ^"SCHOOLS, NURSERY"] or [mh NURSERIES] or [mh ^"CHILD DAY CARE CENTERS"] or [mh ^UNIVERSITIES] or [mh ^TEACHING] or [mh ^"REMEDIAL TEACHING"] or [mh ^"SCHOOL TEACHERS"])

#	Searches
#65	#62 or #63 or #64
#66	[mh ^"HEALTH SERVICES NEEDS AND DEMAND"]
#67	[mh ^"DELIVERY OF HEALTH CARE"]
#68	[mh ^"COOPERATIVE BEHAVIOR"]
#69	[mh ^COMMUNICATION]
#70	[mh ^"INTERPROFESSIONAL RELATIONS"]
#71	#66 or #67 or #68 or #69 or #70
#72	((health* or NHS or clinical or clinician* or medical or medic or medics or physician* or consultant* or nurse* or general practitioner* or GP or GPs or occupational therapist* or OT or OTs or allied health professional* or AHP or AHPs or ((speech or language) near/3 therapist*) or SLT or SLTs) near/5 social* near/5 (service* or department* or institution* or organisation* or organization* or sector* or agenc* or provider* or policy or policies or collaborat* or coordinat* or co-ordinat* or cooperat* or co-operat* or integrat* or partnership* or partnering or network* or inter or multi or joint* or across or share* or sharing or together or communicat* or barrier* or facilitat* or deliver*)):ti,ab
#73	((health* or NHS or clinical or clinician* or medical or medic or medics or physician* or consultant* or nurse* or general practitioner* or GP or GPs or occupational therapist* or OT or OTs or allied health professional* or AHP or AHPs or ((speech or language) near/3 therapist*) or SLT or SLTs) near/5 (educat* or school* or teach* or headmaster* or headmistress* or SENCO or SENCOs or DfE*) near/5 (service* or department* or institution* or organisation* or organization* or sector* or agenc* or provider* or policy or policies or collaborat* or coordinat* or co-ordinat* or cooperat* or co-operat* or integrat* or partnership* or partnering or network* or inter or multi or joint* or across or share* or sharing or together or communicat* or barrier* or facilitat* or deliver*)):ti,ab
#74	(social* near/5 (educat* or school* or teach* or headmaster* or headmistress* or SENCO or SENCOs or DfE*) near/5 (service* or department* or institution* or organisation* or organization* or sector* or agenc* or provider* or policy or policies or collaborat* or coordinat* or co-ordinat* or cooperat* or co-operat* or integrat* or partnership* or partnering or network* or inter or multi or joint* or across or share* or sharing or together or communicat* or barrier* or facilitat* or deliver*)):ti,ab
#75	#72 or #73 or #74
#76	[mh ^"STATE MEDICINE"/og]
#77	[mh ^"CHILD HEALTH SERVICES"/og]
#78	[mh ^"ADOLESCENT HEALTH SERVICES"/og]
#79	[mh ^EDUCATION/og]
#80	[mh "EDUCATION, SPECIAL"/og]
#81	[mh "SOCIAL WORK"/og]
#82	#76 or #77 or #78 or #79 or #80 or #81
#83	#47 and #50
#84	#47 and #61
#85	#47 and #65 and #71
#86	#47 and #75
#87	#47 and #82
#88	#83 or #84 or #85 or #86 or #87
#89	#83 or #84 or #85 or #86 or #87 with Publication Year from 2000 to 2019, in Trials
#90	#20 and #89

Database: NHS Economic Evaluation Database (NHSEED)

Date of last search: 22/10/2019

#	Searches
1	MeSH DESCRIPTOR ADOLESCENT IN NHSEED
2	MeSH DESCRIPTOR MINORS IN NHSEED
3	(adolescen* or teen* or youth* or young or juvenile* or minors or highschool*) IN NHSEED
4	MeSH DESCRIPTOR CHILD EXPLODE ALL TREES IN NHSEED
5	(child* or schoolchild* or "school age" or "school aged" or preschool* or toddler* or kid* or kindergar* or boy* or girl*) IN NHSEED
6	MeSH DESCRIPTOR INFANT EXPLODE ALL TREES IN NHSEED
7	(infan* or neonat* or newborn* or baby or babies) IN NHSEED
8	MeSH DESCRIPTOR PEDIATRICS EXPLODE ALL TREES IN NHSEED
9	(pediatric* or paediatric*) IN NHSEED
10	MeSH DESCRIPTOR YOUNG ADULT IN NHSEED
11	("young* adult*") IN NHSEED
12	#1 OR #2 OR #3 OR #4 OR #5 OR #6 OR #7 OR #8 OR #9 OR #10 OR #11
13	MeSH DESCRIPTOR DISABLED PERSONS EXPLODE ALL TREES IN NHSEED
14	MeSH DESCRIPTOR MENTAL DISORDERS EXPLODE ALL TREES IN NHSEED
15	MeSH DESCRIPTOR COMMUNICATION DISORDERS EXPLODE ALL TREES IN NHSEED
16	MeSH DESCRIPTOR INTELLECTUAL DISABILITY EXPLODE ALL TREES IN NHSEED
17	(disable* or disabilit* or handicap* or retard* or disorder* or impair* or condition* or difficulty or difficulties or deficit* or dysfunct*):TI IN NHSEED

Disabled children and young people up to 25 with severe complex needs: Economic literature searches and selection (March 2022)

#	Searches
18	((sever* or complex* or special or high) adj3 need*) IN NHSEED
19	#13 OR #14 OR #15 OR #16 OR #17 OR #18
20	#12 AND #19
21	MeSH DESCRIPTOR DISABLED CHILDREN IN NHSEED
22	(CSHCN) IN NHSEED
23	("Education Health" adj2 "Care plan*") IN NHSEED
24	("EHC plan*") IN NHSEED
25	(EHCP*) IN NHSEED
26	#20 OR #21 OR #22 OR #23 OR #24 OR #25

Database: Health Technology Abstracts (HTA)

Date of last search: 22/10/2019

#	Searches
1	MeSH DESCRIPTOR ADOLESCENT IN HTA
2	MeSH DESCRIPTOR MINORS IN HTA
3	(adolescen* or teen* or youth* or young or juvenile* or minors or highschool*) IN HTA
4	MeSH DESCRIPTOR CHILD EXPLODE ALL TREES IN HTA
5	(child* or schoolchild* or "school age" or "school aged" or preschool* or toddler* or kid* or kindergar* or boy* or girl*) IN HTA
6	MeSH DESCRIPTOR INFANT EXPLODE ALL TREES IN HTA
7	(infan* or neonat* or newborn* or baby or babies) IN HTA
8	MeSH DESCRIPTOR PEDIATRICS EXPLODE ALL TREES IN HTA
9	(pediatric* or paediatric*) IN HTA
10	MeSH DESCRIPTOR YOUNG ADULT IN HTA
11	("young* adult*") IN HTA
12	#1 OR #2 OR #3 OR #4 OR #5 OR #6 OR #7 OR #8 OR #9 OR #10 OR #11
13	MeSH DESCRIPTOR DISABLED PERSONS EXPLODE ALL TREES IN HTA
14	MeSH DESCRIPTOR MENTAL DISORDERS EXPLODE ALL TREES IN HTA
15	MeSH DESCRIPTOR COMMUNICATION DISORDERS EXPLODE ALL TREES IN HTA
16	MeSH DESCRIPTOR INTELLECTUAL DISABILITY EXPLODE ALL TREES IN HTA
17	(disable* or disabilit* or handicap* or retard* or disorder* or impair* or condition* or difficulty or difficulties or deficit* or dysfunct*):TI IN HTA
18	((sever* or complex* or special or high) adj3 need*) IN HTA
19	#13 OR #14 OR #15 OR #16 OR #17 OR #18
20	#12 AND #19
21	MeSH DESCRIPTOR DISABLED CHILDREN IN HTA
22	(CSHCN) IN HTA
23	("Education Health" adj2 "Care plan*") IN HTA
24	("EHC plan*") IN HTA
25	(EHCP*) IN HTA
26	#20 OR #21 OR #22 OR #23 OR #24 OR #25

Databases: Applied Social Sciences Index & Abstracts (ASSIA); Social Services Abstracts; Sociological Abstracts; and ERIC (Education Resources Information Centre)

Date of last search: 22/10/2019

#	Searches
1	AB,TI(budget* OR cost* OR economic* OR pharmaco-economic* OR price* OR pricing* OR financ* OR fee OR fees OR expenditure* OR saving* OR "value for money" OR "monetary value" OR "resourc* allocat*" OR "allocat* resourc*" OR fund OR funds OR funding* OR funded OR ration OR rations OR rationing* OR rationed)
2	AB,TI(adolescen* OR teen* OR youth* OR young OR juvenile? OR minors OR highschool* OR child* OR schoolchild* OR "school age" OR "school aged" OR preschool* OR toddler* OR kid? OR kindergar* OR boy? OR girl? OR infan* OR neonat* OR newborn* OR baby OR babies OR p?ediatric* OR "young* adult?")
3	TI(disable? OR disabilit* OR handicap* OR retard* OR disorder? OR impair* OR condition? OR difficulty OR difficulties OR deficit? OR dysfunct* OR ((sever* OR complex* OR special OR high) NEAR/3 need?) OR SHCN OR CSHCN OR "Education Health and Care plan?" OR "EHC plan?" OR EHCP?)
4	AB,TI((health* OR NHS OR clinical OR clinician? OR medical OR medic? OR physician? OR consultant? OR nurse? OR "general practitioner?" OR GP? OR "occupational therapist?" OR OT? OR "allied health professional?" OR AHP?)

Disabled children and young people up to 25 with severe complex needs: Economic literature searches and selection (March 2022)

#	Searches
	OR "speech therapist?" OR "language therapist?" OR SLT?) AND social* AND (educat* OR school* OR teach* OR headmaster? OR headmistress* OR SENCO? OR DfE?)
5	TI(interinstitution* OR multiinstitution* OR jointinstitution* OR interorgani?ation* OR multiorgani?ation* OR jointorgani?ation* OR intersector* OR multisector* OR jointsector* OR interagenc* OR multiagenc* OR jointagenc* OR interprofession* OR multiprofession* OR jointprofession* OR service? OR department? OR institution* OR organi?ation* OR sector* OR agenc* OR provider? OR policy OR policies OR collaborat* OR coordinat* OR co-ordinat* OR cooperat* OR co-operat* OR integrat* OR partnership? OR partnering OR network* OR inter OR multi OR joint*)
6	TI(((health* OR NHS OR clinical OR clinician? OR medical OR medic? OR physician? OR consultant? OR nurse? OR "general practitioner?" OR GP? OR "occupational therapist?" OR OT? OR "allied health professional?" OR AHP? OR "speech therapist?" OR "language therapist?" OR SLT?) AND social*) OR ((health* OR NHS OR clinical OR clinician? OR medical OR medic? OR physician? OR consultant? OR nurse? OR "general practitioner?" OR GP? OR "occupational therapist?" OR OT? OR "allied health professional?" OR AHP? OR "speech therapist?" OR "language therapist?" OR SLT?) AND (educat* OR school* OR teach* OR headmaster? OR headmistress* OR SENCO? OR DfE?)) OR (social* AND (educat* OR school* OR teach* OR headmaster? OR headmistress* OR SENCO? OR DfE?)))
7	1 AND 2 AND 3 AND 4 Additional limits - Date: From January 2000 to October 2019
8	1 AND 2 AND 3 AND 5 Additional limits - Date: From January 2000 to October 2019
9	1 AND 2 AND 3 AND 6 Additional limits - Date: From January 2000 to October 2019
10	7 OR 8 OR 9

Database: British Education Index

Date of last search: 22/10/2019

#	Searches
1	TX (budget* or cost* or economic* or pharmaco-economic* or price* or pricing* or financ* or fee or fees or expenditure* or saving* or "value for money" or "monetary value" or "resourc* allocat*" or "allocat* resource*" or fund or funds or funding* or funded or ration or rations or rationing* or rationed) AND TX (adolescenc* OR teen* OR youth* OR young OR juvenile? OR minors OR highschool* OR child* OR schoolchild* OR "school age" OR "school aged" OR preschool* OR toddler* OR kid? OR kindergar* OR boy? OR girl? OR infan* OR neonat* OR newborn* OR baby OR babies OR p#ediatric* OR "young* adult?") AND TI (disable? OR disabilit* OR handicap* OR retard* OR disorder? OR impair* OR condition? OR difficulty OR difficulties OR deficit? OR dysfunct* OR "sever* need?" OR "complex* need?" OR "special need?" OR "special educat* need?" OR "high need?" OR SHCN OR CSHCN OR "Education Health and Care plan?" OR "EHC plan?" OR EHCP?) AND TI (interinstitution* OR multiinstitution* OR jointinstitution* OR interorgani?ation* OR multiorgani?ation* OR jointorgani?ation* OR intersector* OR multisector* OR jointsector* OR interagenc* OR multiagenc* OR jointagenc* OR interprofession* OR multiprofession* OR jointprofession* OR service? OR department? OR institution* OR organi?ation* OR sector* OR agenc* OR provider? OR policy OR policies OR collaborat* OR coordinat* OR co-ordinat* OR cooperat* OR co-operat* OR integrat* OR partnership? OR partnering OR network* OR inter OR multi OR joint* OR across OR share? OR sharing OR together OR communicat* OR barrier? OR facilitat* OR deliver* OR team*) Limiters - Publication Date: 20000101-20190931
2	TX (budget* or cost* or economic* or pharmaco-economic* or price* or pricing* or financ* or fee or fees or expenditure* or saving* or "value for money" or "monetary value" or "resourc* allocat*" or "allocat* resource*" or fund or funds or funding* or funded or ration or rations or rationing* or rationed) AND TX (adolescenc* OR teen* OR youth* OR young OR juvenile? OR minors OR highschool* OR child* OR schoolchild* OR "school age" OR "school aged" OR preschool* OR toddler* OR kid? OR kindergar* OR boy? OR girl? OR infan* OR neonat* OR newborn* OR baby OR babies OR p#ediatric* OR "young* adult?") AND TI (disable? OR disabilit* OR handicap* OR retard* OR disorder? OR impair* OR condition? OR difficulty OR difficulties OR deficit? OR dysfunct* OR "sever* need?" OR "complex* need?" OR "special need?" OR "special educat* need?" OR "high need?" OR SHCN OR CSHCN OR "Education Health and Care plan?" OR "EHC plan?" OR EHCP?) AND AB (((health* OR NHS OR clinical OR clinician? OR medical OR medic? OR physician? OR consultant? OR nurse? OR "general practitioner?" OR GP? OR "occupational therapist?" OR OT? OR "allied health professional?" OR AHP? OR "speech therapist?" OR "language therapist?" OR SLT?) AND social*) OR ((health* OR NHS OR clinical OR clinician? OR medical OR medic? OR physician? OR consultant? OR nurse? OR "general practitioner?" OR GP? OR "occupational therapist?" OR OT? OR "allied health professional?" OR AHP? OR "speech therapist?" OR "language therapist?" OR SLT?) AND (educat* OR school* OR teach* OR headmaster? OR headmistress* OR SENCO? OR DfE?)) OR (social* AND (educat* OR school* OR teach* OR headmaster? OR headmistress* OR SENCO? OR DfE?)))) Limiters - Publication Date: 20000101-20190931
3	1 or 2

Database: CINAHL Plus (Cumulative Index to Nursing and Allied Health Literature)

Date of last search: 22/10/2019

#	Searches
1	TI (budget* or cost* or economic* or pharmaco-economic* or price* or pricing* or financ* or fee or fees or expenditure* or saving* or "value for money" or "monetary value" or "resourc* allocat*" or "allocat* resource*" or fund or funds or funding*

Disabled children and young people up to 25 with severe complex needs: Economic literature searches and selection (March 2022)

#	Searches
	or funded or ration or rations or rationing* or rationed) AND TX (adolescen* OR teen* OR youth* OR young OR juvenile* OR minors OR highschool* OR child* OR schoolchild* OR "school age" OR "school aged" OR preschool* OR toddler* OR kid? OR kindergar* OR boy? OR girl? OR infan* OR neonat* OR newborn* OR baby OR babies OR p#ediatric* OR "young* adult?") AND TI (disable? OR disabilit* OR handicap* OR retard* OR disorder? OR impair* OR condition? OR difficulty OR difficulties OR deficit? OR dysfunct* OR "sever* need?" OR "complex* need?" OR "special need?" OR "special educat* need?" OR "high need?" OR SHCN OR CSHCN OR "Education Health and Care plan?" OR "EHC plan?" OR EHCP?) AND TI (interinstitution* OR multiinstitution* OR jointinstitution* OR interorgani?ation* OR multiorgani?ation* OR jointorgani?ation* OR intersector* OR multisector* OR jointsector* OR interagenc* OR multiagenc* OR jointagenc* OR interprofession* OR multiprofession* OR jointprofession* OR service? OR department? OR institution* OR organi?ation* OR sector* OR agenc* OR provider? OR policy OR policies OR collaborat* OR coordinat* OR co-ordinat* OR cooperat* OR co-operat* OR integrat* OR partnership? OR partnering OR network* OR inter OR multi OR joint* OR across OR share? OR sharing OR together OR communicat* OR barrier? OR facilitat* OR deliver* OR team*) Limiters - Publication Date: 20000101-20190931
2	TI (budget* or cost* or economic* or pharmaco-economic* or price* or pricing* or financ* or fee or fees or expenditure* or saving* or "value for money" or "monetary value" or "resourc* allocat*" or "allocat* resource*" or fund or funds or funding* or funded or ration or rations or rationing* or rationed) AND TX (adolescen* OR teen* OR youth* OR young OR juvenile* OR minors OR highschool* OR child* OR schoolchild* OR "school age" OR "school aged" OR preschool* OR toddler* OR kid? OR kindergar* OR boy? OR girl? OR infan* OR neonat* OR newborn* OR baby OR babies OR p#ediatric* OR "young* adult?") AND TI (disable? OR disabilit* OR handicap* OR retard* OR disorder? OR impair* OR condition? OR difficulty OR difficulties OR deficit? OR dysfunct* OR "sever* need?" OR "complex* need?" OR "special need?" OR "special educat* need?" OR "high need?" OR SHCN OR CSHCN OR "Education Health and Care plan?" OR "EHC plan?" OR EHCP?) AND AB ((((health* OR NHS OR clinical OR clinician? OR medical OR medic? OR physician? OR consultant? OR nurse? OR "general practitioner?" OR GP? OR "occupational therapist?" OR OT? OR "allied health professional?" OR AHP? OR "speech therapist?" OR "language therapist?" OR SLT?) AND social*) OR ((health* OR NHS OR clinical OR clinician? OR medical OR medic? OR physician? OR consultant? OR nurse? OR "general practitioner?" OR GP? OR "occupational therapist?" OR OT? OR "allied health professional?" OR AHP? OR "speech therapist?" OR "language therapist?" OR SLT?) AND (educat* OR school* OR teach* OR headmaster? OR headmistress* OR SENCO? OR DfE?)) OR (social* AND (educat* OR school* OR teach* OR headmaster? OR headmistress* OR SENCO? OR DfE?))) Limiters - Publication Date: 20000101-20190931
3	1 or 2

Database: Social Sciences Citation Index (SSCI)

Date of last search: 22/10/2019

#	Searches
# 1	TOPIC: (budget* or cost* or economic* or pharmaco-economic* or price* or pricing* or financ* or fee or fees or expenditure* or saving* or fund or funds or funding* or funded or ration or rations or rationing* or rationed) Indexes=SSCI Timespan=2000-2019
# 2	TOPIC: (value near/3 money) Indexes=SSCI Timespan=2000-2019
# 3	TOPIC: (resourc* near/3 allocat*) Indexes=SSCI Timespan=2000-2019
# 4	#3 OR #2 OR #1 Indexes=SSCI Timespan=2000-2019
# 5	TOPIC: ((adolescen* or teen* or youth* or young or juvenile\$ or minors or highschool*)) Indexes=SSCI Timespan=2000-2019
# 6	TOPIC: ((child* or schoolchild* or "school age" or "school aged" or preschool* or toddler* or kid\$ or kindergar* or boy\$ or girl\$)) Indexes=SSCI Timespan=2000-2019
# 7	TOPIC: ((infan* or neonat* or newborn* or baby or babies)) Indexes=SSCI Timespan=2000-2019
# 8	TOPIC: (p#ediatric*) Indexes=SSCI Timespan=2000-2019
# 9	TOPIC: ("young* adult\$") Indexes=SSCI Timespan=2000-2019
# 10	#9 OR #8 OR #7 OR #6 OR #5 Indexes=SSCI Timespan=2000-2019
# 11	TITLE: ((disable\$ or disabilit* or handicap* or retard* or disorder\$ or impair* or condition\$ or difficulty or difficulties or deficit\$ or dysfunct*)) Indexes=SSCI Timespan=2000-2019
# 12	TOPIC: (((sever* or complex* or special or high) near/3 need\$)) Indexes=SSCI Timespan=2000-2019
# 13	TOPIC: (SHCN) Indexes=SSCI Timespan=2000-2019
# 14	#13 OR #12 OR #11 Indexes=SSCI Timespan=2000-2019
# 15	#14 AND #10 Indexes=SSCI Timespan=2000-2019
# 16	TOPIC: (CSHCN) Indexes=SSCI Timespan=2000-2019
# 17	TOPIC: ("Education Health and Care plan\$") Indexes=SSCI Timespan=2000-2019
# 18	TOPIC: ("EHC plan\$") Indexes=SSCI Timespan=2000-2019
# 19	TOPIC: (EHCP\$) Indexes=SSCI Timespan=2000-2019
# 20	#19 OR #18 OR #17 OR #16 OR #15 Indexes=SSCI Timespan=2000-2019
# 21	TITLE: (((health* or NHS or clinical or clinician\$ or medical or medic\$ or physician\$ or consultant\$ or nurse\$ or general practitioner\$ or GP or GPs or occupational therapist\$ or OT or OTs or allied health professional\$ or AHP or AHPs or ((speech or language) near/3 therapist\$) or SLT or SLTs) and social* and (educat* or school* or teach* or headmaster\$ or headmistress* or SENCO\$ or DfE\$))) Indexes=SSCI Timespan=2000-2019
# 22	TOPIC: (((health or healthcare or NHS or clinical or medical or medic or medics or nurse or nurses) near/10 social near/10 (education or educating or educator or educators or school or schools or teach or teaching or teachers))) Indexes=SSCI Timespan=2000-2019

Disabled children and young people up to 25 with severe complex needs: Economic literature searches and selection (March 2022)

#	Searches
# 23	#22 OR #21 Indexes=SSCI Timespan=2000-2019
# 24	TOPIC: (((interinstitution* or multiinstitution* or jointinstitution*)) Indexes=SSCI Timespan=2000-2019
# 25	TOPIC: (((interorganization* or multiorganization* or jointorganization*)) Indexes=SSCI Timespan=2000-2019
# 26	TOPIC: (((intersector* or multisector* or jointsector*)) Indexes=SSCI Timespan=2000-2019
# 27	TOPIC: (((interagency* or multiagency* or jointagency*)) Indexes=SSCI Timespan=2000-2019
# 28	TOPIC: (((interprofession* or multiprofession* or jointprofession*)) Indexes=SSCI Timespan=2000-2019
# 29	TOPIC: (((inter or multi or joint) near/3 (institution* or organization* or sector* or agency* or profession*)) Indexes=SSCI Timespan=2000-2019
# 30	TITLE: (((institution* or organization* or sector* or agency* or profession* or care or service\$ or department*) near/5 (collaborat* or coordinat* or co-ordinat* or cooperat* or co-operat* or integrat* or partner*)) Indexes=SSCI Timespan=2000-2019
# 31	#30 OR #29 OR #28 OR #27 OR #26 OR #25 OR #24 Indexes=SSCI Timespan=2000-2019
# 32	TOPIC: (((health or healthcare or NHS or clinical or medical or medic or medics or nurse or nurses) near/5 social near/5 (service\$ or department\$ or institution* or organization* or sector* or agency* or provider\$ or policy or policies or collaborat* or coordinat* or co-ordinat* or cooperat* or co-operat* or integrat* or partnership\$ or partnering or network* or inter or multi or joint* or across or share\$ or sharing or together or communicat* or barrier\$ or facilitat* or deliver*)) Indexes=SSCI Timespan=2000-2019
# 33	TOPIC: (((health or healthcare or NHS or clinical or medical or medic or medics or nurse or nurses) near/5 (education or educating or educator or educators or school or schools or teach or teaching or teachers) near/5 (service\$ or department\$ or institution* or organization* or sector* or agency* or provider\$ or policy or policies or collaborat* or coordinat* or co-ordinat* or cooperat* or co-operat* or integrat* or partnership\$ or partnering or network* or inter or multi or joint* or across or share\$ or sharing or together or communicat* or barrier\$ or facilitat* or deliver*)) Indexes=SSCI Timespan=2000-2019
# 34	TOPIC: (((social near/5 (education or educating or educator or educators or school or schools or teach or teaching or teachers) near/5 (service\$ or department\$ or institution* or organization* or sector* or agency* or provider\$ or policy or policies or collaborat* or coordinat* or co-ordinat* or cooperat* or co-operat* or integrat* or partnership\$ or partnering or network* or inter or multi or joint* or across or share\$ or sharing or together or communicat* or barrier\$ or facilitat* or deliver*)) Indexes=SSCI Timespan=2000-2019
# 35	#34 OR #33 OR #32 Indexes=SSCI Timespan=2000-2019
# 36	#23 AND #20 Indexes=SSCI Timespan=2000-2019
# 37	#31 AND #20 Indexes=SSCI Timespan=2000-2019
# 38	#35 AND #20 Indexes=SSCI Timespan=2000-2019
# 39	#38 OR #37 OR #36 Indexes=SSCI Timespan=2000-2019
# 40	#39 AND #4 Indexes=SSCI Timespan=2000-2019

Database: Social Care Online

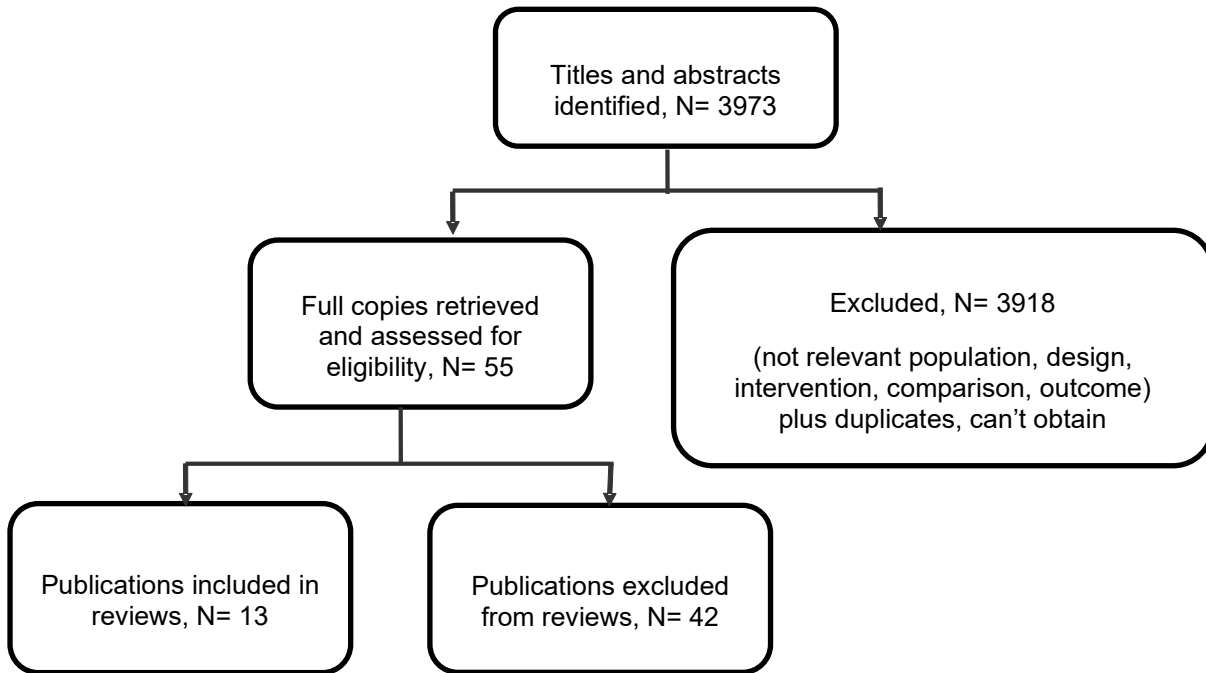
Date of last search: 22/10/2019

#	Searches
	AllFields:'budget or cost or economic or pharmaco-economic or price or pricing or finance or fee or fees or expenditure or saving or "value for money" or "monetary value" or "allocate resource" or "resource allocation" or fund or funds or funding or funded or ration or rations or rationing or rationed'
	AND AllFields:'disabled or disability or disabilities or handicap or retard or disorder or impaired or impairment or condition or difficulty or difficulties or deficit or dysfunction or "special need" or "complex need"'
	AND AllFields:'child or children or schoolchild or schoolchildren or "school age" or "school aged" or preschool or toddler or kid or kindergarden or boy or girl or infant or neonate or newborn or baby or babies or pediatric or paediatric or "young people" or "young adults"'
	AND PublicationYear:'2000 2019'

Economic study selection

Economic evidence study selection is shown in Figure 1. The number of included studies for each review question is detailed in Table 1. The list of excluded studies across all reviews with reasons for their exclusion are detailed in Table 2.

Figure 1: Economic study selection



1 **Table 1: Summary of economic study selection**

Evidence review	Review questions	Number of included economic studies
[A] Views and experiences of service users	What is the experience of disabled children and young people with severe complex needs and their families and carers of joint delivery of health, social care and education services?	0
[B] Involving children and young people	What are the most effective practices (for example, communication and information management) to enable health, social care and education services to work together to involve disabled children and young people with severe complex needs in understanding, planning and reviewing their health, social care and education?	0
[C] Combined approaches to identifying, assessing & monitoring needs	What are the most effective combined approaches to identifying, assessing and monitoring the health, social care and education needs (including changing needs) of disabled children and young people with severe complex needs?	0
[D] Supporting families and carers	What interventions, such as combined support, communication strategies and short breaks, are effective in enabling families and carers to be involved in the planning and delivery of care for disabled children and young people with severe complex needs?	2
[E] Palliative and end of life care	What combined health, social care and education service delivery arrangements can best provide for the needs of disabled children and young people with severe complex needs on a palliative or advance care plan, and for the needs of their families and carers?	0
[F] Supporting participation in education and social activities	What are the most effective ways that health, social care and education services can work together to support disabled children and young people with severe complex needs to participate in and benefit from education and social activities?	0
[G] Promoting inclusion, independence and wellbeing	What interventions, such as combined support, communication strategies and short breaks, are effective in enabling families and carers to be involved in the planning and delivery of care for disabled children and young people with severe complex needs?	1
[H] Preparation for employment	What are the most effective models of health, social care and education services working together to prepare disabled children and young people with severe complex needs for employment?	0
[I] Suitability and accessibility of environments	What are the most effective practices (for example, environmental assessments and use of equipment such as assistive technology across different contexts) to ensure the suitability and accessibility of the environments in which disabled children and young people with severe complex needs receive health and social care and education?	2

Disabled children and young people up to 25 with severe complex needs: Economic literature searches and selection (March 2022)

Evidence review	Review questions	Number of included economic studies
[J] Planning and managing transition from children's to adults' services	What is the impact of including education with combined health and social care support models and frameworks on transition from children's to adults' services for disabled children and young people with severe complex needs?	3
[K] Barriers and facilitators of joined-up care	What are the barriers and facilitators perceived or experienced by users, providers and practitioners of joined-up care across health, social care, education and other services for disabled children and young people with severe complex needs?	0
[L] Enabling professionals to meet needs of children and young people	What are the most effective practices (for example, communication and training) to enable health, social care and education professionals to meet the combined health, social care and education needs of disabled children and young people with severe complex needs?	0
[M] Views and experiences of service providers	What is the experience of commissioners, providers and practitioners of joint working of health, social care and education services for disabled children and young people with severe complex needs?	0
[N] Commissioning, practice and service delivery models	<ul style="list-style-type: none"> • What are the most effective commissioning, practice and service delivery practice models to deliver joined-up health, social care and education services for disabled children and young people with severe complex needs? • What combined commissioning, practice and service delivery models are most effective in meeting the health, social care and education needs (including changing and evolving needs) of disabled children and young people with severe complex needs? 	5

1

2 **Table 2: Excluded studies and reasons for their exclusion**

Study	Reason for Exclusion
1. Antonelli, R. C., Antonelli, D. M., Providing a medical home: the cost of care coordination services in a community-based, general pediatric practice, <i>Pediatrics</i> , 113, 1522-8, 2004	Population not in PICO: includes general paediatric population.
2. Antonelli, R. C., Stille, C. J., Antonelli, D. M., Care coordination for children and youth with special health care needs: a descriptive, multisite study of activities, personnel costs, and outcomes, <i>Pediatrics</i> , 122, e209-16, 2008	Population not in PICO: includes general paediatric population.
3. Bee, P., Pedley, R., Rithalia, A., Richardson, G., Prymachuk, S., Kirk, S., Bower, P., Self-care support for children and adolescents with long-term conditions :	Population not in PICO: people with asthma, depression.

Disabled children and young people up to 25 with severe complex needs: Economic literature searches and selection (March 2022)

Study	Reason for Exclusion
the REfOCUS evidence synthesis, Health Services and Delivery Research, 6, 2018	
4. Beecham, J., Sloper, P., Greco, V., Webb, R., The costs of key worker support for disabled children and their families, Child: Care, Health and Development, 33, 611-8, 2007	Duplicate of an included study (Sloper 2010)
5. Beecham, J., O'Neill, T., Goodman, R., Supporting young adults with hemiplegia: services and costs, Health and Social Care in the Community, 9, 51-59, 2001	Cost of illness/burden of disease study.
6. Beresford, B., Moran, N., Sloper., Cusworth, L., Mitchell, W., Spiers, G., et al., Transition to adult services and adulthood for young people with autistic spectrum conditions, 2013	Population not in PICO: learning disabilities or autistic spectrum conditions, unclear what proportion was high functioning.
7. Beresford, B., Stuttard, L., Clarke, S., Maddison, J., Beecham, J., Managing behaviour and sleep problems in disabled children: an investigation into the effectiveness and costs of parent-training interventions: summary report, 2010	Population and intervention not in PICO: unclear if people have severe complex needs; voucher scheme.
8. Block, S.R., Rosenberg, S.A., Gunther-Kellar, Y., Rees, D. and Hodges, N., Improving human services for children with disabilities and their families: the use of vouchers as an alternative to traditional service contracts, Administration in Social Work, 26, 23-36, 2001	Old costing data; no detail on costing methods.
9. Byford, S., Cary, M., Barrett, B., Aldred, C. R., Charman, T., Howlin, P., Hudry, K., et al., Cost-effectiveness analysis of a communication-focused therapy for pre-school children with autism: Results from a randomised controlled trial, BMC Psychiatry, 15 (1) (no pagination), 2015	Population not in PICO: autism, unclear what proportion was high functioning.
10. Craig, T. K., Johnson, S., McCrone, P., Afuwape, S., Hughes, E., Gournay, K., et al., Integrated care for co-occurring disorders: psychiatric symptoms, social functioning, and service costs at 18 months, Psychiatric services (Washington, D.C.), 59, 276-282, 2008	Population not in PICO: adults.
11. Gouge, N., Polaha, J., Rogers, R., Harden, A., Integrating Behavioral Health into Pediatric Primary Care: Implications for Provider Time and Cost, Southern Medical Journal, 109, 774-778, 2016	Intervention not in PICO: integrating a behavioural health consultant into primary care.
12. Greco, V., Sloper, P., Webb, R., Beecham, J., An exploration of different models of multi-agency partnerships in key worker services for disabled children: effectiveness and costs, Social Policy Research Unit, University of York, 2005	Reports unit cost data only

Study	Reason for Exclusion
13. Grimes, K. E., Schulz, M. F., Cohen, S. A., Mullin, B. O., Lehar, S. E., Tien, S., Pursuing cost-effectiveness in mental health service delivery for youth with complex needs, <i>The journal of mental health policy and economics</i> , 14, 73-83, 2011	Population not in PICO: people with emotional disturbance.
14. Hassiotis, A., Robotham, D., Canagasabey, A., Romeo, R., Langridge, D., Blizard, R., Murad, S., King, M., Randomized, single-blind, controlled trial of a specialist behavior therapy team for challenging behavior in adults with intellectual disabilities, <i>American Journal of Psychiatry</i> , 166, 1278-1285, 2009	Intervention not in PICO: community-based specialist behaviour therapy.
15. Holmes, L., McDermid, S., Sempik, J., The costs of short break provision, Loughborough University, 2010	Reports unit cost data only
16. Hooshmand, M., Foronda, C., Comparison of Telemedicine to Traditional Face-to-Face Care for Children with Special Needs: A Quasiexperimental Study, <i>Telemedicine and E-Health</i> , 24, 433-441, 2018	Population not in PICO: includes people with non-complex needs.
17. Hooshmand, M., Yao, K., Challenges facing children with special healthcare needs and their families: Telemedicine as a bridge to care, <i>Telemedicine and e-Health</i> , 23, 18-24, 2017	Only mentions potential cost effectiveness.
18. Lemmi, V., Knapp, M., Brown, F. J., Positive behavioural support in schools for children and adolescents with intellectual disabilities whose behaviour challenges: An exploration of the economic case, <i>Journal of Intellectual Disabilities</i> , 20, 281-295, 2016	Intervention not in PICO: positive behavioural support.
19. Lemmi, V., Knapp, M., Reid, C., Sholl, C., Ferdinand, M., Buescher, A. and Trachtenberg, M., Positive behavioural support for children and adolescents with learning disabilities and behaviour that challenges: an initial exploration of service use and 2016 costs. <i>Tizard Learning Disability Review</i> , 2016	Intervention not in PICO: positive behavioural support.
20. Ingels, J. B., Corso, P. S., Kogan, S. M., Brody, G. H., Cost-effectiveness of the strong African American families-teen program: 1-year follow-up, <i>Drug and Alcohol Dependence</i> , 133, 556-561, 2013	Intervention not in PICO: drug and alcohol dependence.
21. Inkelas, M., Incentives in a Medicaid carve-out: impact on children with special health care needs, <i>Health services research</i> , 40, 79-99, 2005	Intervention not in PICO: evaluation of a policy change associated with Medicaid.
22. Katon, W., Russo, J., Lin, E. H. B., Schmittdiel, J., Ciechanowski, P., Ludman, E., et al., Cost-effectiveness of a multicondition collaborative care	Population not in PICO: adults.

Study	Reason for Exclusion
intervention, Archives of General Psychiatry, 69, 506-514, 2012	
23. Kirby, A., Thomas, M., The whole child with developmental disorders, British journal of hospital medicine (London, England : 2005), 72, 161-7, 2011	Only mentions cost effectiveness.
24. Marcu, M. I., Knapp, C. A., Madden, V. L., Wang, H., Kaufmann, M., Sloyer, P., Effect of an integrated care system on utilization for CSHCN in Florida, Maternal and Child Health Journal, 18, 38-44, 2014	Population not in PICO: includes people with non-complex needs.
25. Matthew Reese, R., Braun, M. J., Hoffmeier, S., Stickle, L., Rinner, L., Smith, C., et al., Preliminary evidence for the integrated systems using telemedicine, Telemedicine and E-Health, 21, 581-587, 2015	Population not in PICO: autism, unclear what proportion was high functioning.
26. McAllister, J. W., Presler, E., Cooley, W. C., Practice-based care coordination: a medical home essential, Pediatrics, 120, e723-33, 2007	Only refers to costs.
27. Nydén, A., Myrén, K.J. and Gillberg, C., Long-Term Psychosocial and Health Economy Consequences of ADHD, Autism, and Reading-Writing Disorder: A Prospective Service Evaluation Project, Journal of Attention Disorders, 12, 141-148, 2008	Population not in PICO: attention-deficit/hyperactivity disorder, autism, and reading-writing Disorder; non-disabled.
28. Ogg, J.A. and Carlson, J.S., The self-administered Incredible Years Parent Training Program: Perceived effectiveness, acceptability, and integrity with children exhibiting symptoms of attention-deficit/hyperactivity disorder, Journal of Evidence-Based Practices for Schools, 10, 143-166, 2009	Population not in PICO: Attention-deficit/hyperactivity disorder; non-disabled.
29. Parker, G., Bhakta, P., Lovett, C.A., Paisley, S., Olsen, R., Turner, D., A systematic review of the costs and effectiveness of different models of paediatric home care, 118p., 2003	Population not in PICO: very low birth weight or medically fragile babies.
30. Rainbow Trust Children's Charity, See us, hear us, notices us: the case for supporting siblings of seriously ill children, 44, 2019	Intervention not in PICO: sibling support.
31. Rivard, M., Morin, M., Mercier, C., Terroux, A., Mello, C., Lepine, A., Social Validity of a Training and Coaching Program for Parents of Children With Autism Spectrum Disorder on a Waiting List for Early Behavioral Intervention, Journal of Child and Family Studies, 26, 877-887, 2017	Population not in PICO: autism spectrum disorder, unclear what proportion was high functioning.
32. Sacco, F. C., Twemlow, S. W., Fonagy, P., Secure attachment to family and community: a proposal for cost containment within higher user populations of multiple	Population not in PICO: socially deprived children.

Study	Reason for Exclusion
problem families, <i>Smith College Studies in Social Work</i> , 77, 31-51, 2007	
33. Sonuga-Barke, E.J., Barton, J., Daley, D., Hutchings, J., Maishman, T., Raftery, J., Stanton, L., Laver-Bradbury, C., Chorozoglou, M., Coghill, D. and Little, L., A comparison of the clinical effectiveness and cost of specialised individually delivered parent training for preschool attention-deficit/hyperactivity disorder and a generic, group-based programme: a multi-centre, randomised controlled trial of the New Forest Parenting Programme versus Incredible Years, <i>European Child & Adolescent Psychiatry</i> , 27, 797-809, 2018	Population not in PICO: attention-deficit/hyperactivity disorder.
34. Stanford, M., Lennon, M., Estimating children's services spending on vulnerable children: vulnerability technical spend report, 62, 2019	Cost of illness study.
35. Statham, J., Holtermann, S., Families on the brink: the effectiveness of family support services, <i>Child and Family Social Work</i> , 153-66, 2004	Population not in PICO: non-disabled.
36. Sterrett-hong, E.M., Karam, E., Kiaer, L., Statewide Implementation of Parenting with Love and Limits Among Youth with Co-Existing Internalizing and Externalizing Functional Impairments Reduces Return to Service Rates and Treatment Costs, <i>Administration and Policy in Mental Health AND Mental Health Services Research</i> , 44, 792-809, 2017	Population not in PICO: non-disabled.
37. Stuttard, L., Beresford, B., Clarke, S., Beecham, J., Curtis, J., A preliminary investigation into the effectiveness of a group-delivered sleep management intervention for parents of children with intellectual disabilities, <i>Journal of Intellectual Disabilities</i> , 19, 342-355, 2015	Only intervention costs.
38. Sutton, D., Stanley, P., Babl, F.E., Phillips, F., Preventing or accelerating emergency care for children with complex healthcare needs, <i>Archives of disease in childhood</i> , 93, 17-22, 2008	Does not include social care or education.
39. Turchi, R.M., Berhane, Z., Bethell, C., Pomponio, A., Antonelli, R., Minkovitz, C.S., Care coordination for CSHCN: associations with family-provider relations and family/child outcomes, <i>Pediatrics</i> , 124 Suppl 4, S428-34, 2009	Reports only out of pocket expenses.
40. Wright, E. R., Kooreman, H. E., Anderson, J. A., Service Utilization, Expenditures, and Success in a Well-Established System of Care for Young People with Serious Emotional Disorders, <i>Journal of Behavioral</i>	Population not in PICO: disruptive behaviour, mood/anxiety.

Study	Reason for Exclusion
Health Services & Research, 41, 488-502, 2014	
41. Xing, J., Goehring, C., Mancuso, D., Care coordination program for Washington State Medicaid enrollees reduced inpatient hospital costs, Health affairs (Project Hope), 34, 653-61, 2015	Population not in PICO: adults.
42. Young, T. L., Ireson, C., Effectiveness of school-based telehealth care in urban and rural elementary schools, Pediatrics, 112, 1088-94, 2003	Population not in PICO: general paediatric population.

1