

Adults with complex needs: social work interventions including assessment, care management and support.

Supplement 2: Health economics

NICE guideline TBC

Health economics

November 2021

Draft for consultation

*Developed by the National Guideline
Alliance which is a part of the Royal
College of Obstetricians and
Gynaecologists*

Disclaimer

The recommendations in this guideline represent the view of NICE, arrived at after careful consideration of the evidence available. When exercising their judgement, professionals are expected to take this guideline fully into account, alongside the individual needs, preferences and values of their patients or service users. The recommendations in this guideline are not mandatory and the guideline does not override the responsibility of healthcare professionals to make decisions appropriate to the circumstances of the individual patient, in consultation with the patient and/or their carer or guardian.

Local commissioners and/or providers have a responsibility to enable the guideline to be applied when individual health professionals and their patients or service users wish to use it. They should do so in the context of local and national priorities for funding and developing services, and in light of their duties to have due regard to the need to eliminate unlawful discrimination, to advance equality of opportunity and to reduce health inequalities. Nothing in this guideline should be interpreted in a way that would be inconsistent with compliance with those duties.

NICE guidelines cover health and care in England. Decisions on how they apply in other UK countries are made by ministers in the [Welsh Government](#), [Scottish Government](#), and [Northern Ireland Executive](#). All NICE guidance is subject to regular review and may be updated or withdrawn.

Copyright

© NICE 2021. All rights reserved. Subject to [Notice of Rights](#).

ISBN:

Contents

Contents	4
Search strategy	5
Health economics global search	5
Economic evidence study selection	23
Health economics global search	23
Excluded studies	24
Excluded studies following full text review	24

1 Search strategy

Health economics global search

3 One global search was conducted for economic evidence.

4 Database(s): MEDLINE & Embase (Multifile)

5 Embase 1980 to 2021 Week 22, Ovid MEDLINE(R) and Epub Ahead of Print, In-Process &
6 Other Non-Indexed Citations and Daily 1946 to June 07, 2021

7 Date of last search: 08 June 2021

8 Multifile database codes: emez= Embase 1980 to 2021 Week 22; ppez= Ovid MEDLINE(R)
9 and Epub Ahead of Print, In-Process & Other Non-Indexed Citations and Daily 1946 to June
10 07, 2021
11

#	Searches
1	(exp Social Work/ or Social Work, Psychiatric/ or Social Workers/ or Social Welfare/ or Case Management/ or Accountable Care Organizations/ or (Mental Health Services/ and (Professional Role/ or Professional Standard/ or exp Workforce/)) use ppez
2	(social care/ or social welfare/ or social work/ or social work practice/ or social worker/ or case management/ or case manager/ or national health service/ or accountable care organization/ or mental health care personnel/) use emez
3	((social* or case* or outreach or personal or relief or support) adj3 (advisor? or agenc* or assistant? or care* or department* or deliver* or institution* or intervention? or lead* or manager? or organi?ation* or personnel or planning or practi* or profession* or program* or provider? or provision or sector* or service? or setting? or staff or supervi* or system* or team* or unit? or work*)).ti,ab.
4	(care coordinator? or care co-ordinator? or case manager* or caseworker* or case-worker* or case worker* or best interest? assessor?).ti,ab.
5	((("approved mental health" adj (professional? or personnel or staff or team* or worker?)) or AMHP).ti,ab.
6	(social welfare or social assistance or local authorit* or local council* or state support or social prescribing or welfare service?).ti,ab.
7	or/1-6
8	exp Comorbidity/ use ppez
9	comorbidity/ use emez
10	((complex* or chang* or chronic or coexist* or co exist* or combin* or concomitant or comorbid* or co-morbid* or cooccur* or co occur* or develop* or high support or (intellectual* and physical*) or life limiting or long standing or longstanding or long term or (mental* and physical*) or multi* or ongoing or on-going or persistent or priorit* or serious* or severe or several or simultaneous or special*) adj4 (need? or care or circumstance* or condition? or existence? or experience? or initiative? or intervention? or issue* or live? or mitigat* or patient? or person? or people or problem* or realit* or situation? or social factor* or support or target*)).ti,ab.
11	SHCN.ti,ab.
12	complex case?.ti,ab.
13	(dual diagnos?s or multi* diagnos?s).ti,ab.
14	(impact adj3 daily adj (life or lives or living or activit* or experienc*)).ti,ab.
15	or/8-14
16	exp *Social Problems/ use ppez
17	exp *social problem/ use emez
18	16 or 17
19	(exp Human Activities/ or exp Life Style/) use ppez
20	(exp human activities/ or exp "lifestyle and related phenomena"/) use emez
21	18 and (19 or 20)
22	(Employment/ or Employment, Supported/ or Return to Work/ or Rehabilitation, Vocational/ or Unemployment/) use ppez
23	(unemployment/ or employment status/ or supported employment/ or sheltered workshop/ or vocational rehabilitation/ or absenteeism/ or job security/ or return to work/) use emez
24	((chang* or develop* or enhanc* or initiative? or intervention? or program* or address* or improv* or target*) adj3 (employment or unemployment or unemploy*)).ti,ab.
25	(support* adj3 (employment? or work or vocational)).ti,ab.
26	(employment or unemploy* or underemploy* or under employ*).ti.
27	individual placement?.ti,ab.
28	((finding or gaining or obtaining or keeping or sustaining) adj3 (work or job or employment)).ti,ab.
29	(social firms or (sheltered adj (employment or work))).ti,ab.
30	(precar* adj1 (employment or work)).ti,ab.
31	(paid work or paid employment).ti,ab.
32	(voluntary work or volunteering or unpaid work).ti,ab.
33	(meaningful adj (activit* or employment or work)).ti,ab.

#	Searches
34	("return to work" or "back to work" or absenteeism).ti,ab.
35	((alleviat* or ease or manag* or prevent* or reduc* or stop*) adj (work* or disabilit*)).ti,ab.
36	((labo?r force or employment or unemployment) adj status).ti,ab.
37	or/22-36
38	(Family Conflict/ or Family Relations/ or Intergenerational Relations/) use ppez
39	family functioning/ or family conflict/ use emez
40	((family or families or intergenerat* or inter-generat*) adj (relation* or breakdown or conflict?)).ti,ab.
41	((sexual or intimate or partner?) adj (relation* or conflict?)).ti,ab.
42	((develop* or enhanc* or initiative? or intervention? or program* or address* or improv* or promot* or target*) adj2 relationship?).ti,ab.
43	((carer? or partner or relationship?) adj support*).ti,ab.
44	or/38-43
45	(Housing/ or Homeless Persons/ or Independent Living/ or Assisted Living Facilities/ or Group Homes/ or Halfway Houses/ or Housing for the Elderly/ or Poverty Areas/ or Public Housing/ or Residence Characteristics/) use ppez
46	(housing/ or assisted living facility/ or community living/ or emergency shelter/ or homelessness/ or exp homeless person/ or deinstitutionalization/ or halfway house/) use emez
47	housing.ti.
48	((housing or accommodation or neighbo?rhood? or residence*) adj3 (chang* or address* or condition* or develop* or enhanc* or improv* or initiative? or instability or intervention? or mitigat* or program* or stability or target*)).ti,ab.
49	homeless*.ti,ab.
50	(permanent housing or social housing).ti,ab.
51	((assisted or autonomous or independent or secur* or sheltered or support* or sustain*) adj3 (housing or accommodat* or dwelling? or residen* or tenanc* or tenure?)).ti,ab.
52	((halfway or satellite) adj (accommodat* or dwelling? or home? or house?)).ti,ab.
53	(neighbo?rhood? adj (characteristic* or intervention* or program*)).ti,ab.
54	((environment* or housing or neighbo?rhood?) and infrastructure).ti,ab.
55	or/45-54
56	(*Economic Status/ or *Financing, Personal/ or exp *Income/ or Poverty/ or Working Poor/ or *Social Welfare/) use ppez
57	(*money/ or *economic status/ or household economic status/ or *social welfare/ or *socioeconomics/ or household income/ or personal income/ or family income/ or *financial management/ or "salary and fringe benefit"/ or *pension/ or *salary/ or poverty/ or exp lowest income group/) use emez
58	money.ti.
59	((access* or improv* or manag* or supplement*) adj2 (cash or money or financ* or income? or savings)).ti,ab.
60	((financial adj (autonomy or security or insecurity)) or loans or borrowing or budgeting or microcredit or microfinance or social fund*).ti,ab.
61	(extreme poverty or high poverty).ti,ab. or poverty.ti.
62	((address* or escap* or improv* or "out of" or support* or target*) adj2 (depriv* or poor or poverty)).ti,ab.
63	((food or fuel) adj (insecurity or poverty)) or food bank?).ti,ab.
64	((alleviat* or ease or manag* or prevent* or reduc* or stop*) adj2 (debt? or poverty or ((economic or financial) adj hardship?)).ti,ab.
65	((basic or low or minimum) adj3 (wage? or income?)).ti,ab.
66	(family adj (income? or tax credit?)).ti,ab.
67	welfare benefit?.ti,ab.
68	or/56-67
69	(Criminals/ or Prisoners/ or Recidivism/) use ppez
70	(offender/ or exp maladjustment/ or prisoner/) use emez
71	((crime? or criminal* or offend* or offence? or recidiv*) adj3 (initiative? or intervention? or program* or mitigat* or address* or diver* or prevent* rehabilitat*)).ti,ab.
72	((inmate? or prisoner? or convict? or felon?) adj3 (rehabilitat* or releas*)).ti,ab.
73	(community adj2 (reentry or re-entry)).ti,ab.
74	or/69-73
75	("Social Determinants of Health"/ or exp Social Isolation/ or Social Marginalization/ or Social Stigma/) use ppez
76	("social determinants of health"/ or social disability/ or loneliness/ or social isolation/ or social alienation/ or community involvement/ or *social support/ or *social network/ or *psychosocial environment/ or psychosocial rehabilitation/) use emez
77	(community involvement or community network* or loneliness or social* alienat* or social connect* or social inclusion or social* isolat* or social network* or social participation or social stigma*).ti,ab.
78	or/75-77
79	Civil Rights/ or Human Rights/ or Personal Autonomy/ or Personhood/ or Public Policy/ or Social Justice/
80	Minority Groups/ or "Transients and Migrants"/ or Refugees/ or Vulnerable Populations/
81	(or/79-80) use ppez
82	human rights/ or civil rights/ or human dignity/ or personal autonomy/ or social justice/
83	exp migrant/ or minority group/ or vulnerable population/
84	(or/82-83) use emez
85	((civil* or human or legal or social) adj rights) or (social justice or equal protection or social protection)).ti,ab.
86	((social or community or neighbo?rhood?) adj3 (equit* or inequit* or inequalit*)).ti,ab.
87	(digital adj (inclusion or exclusion or divide or equit* or inequit* or inequalit*)).ti,ab.
88	((disadvantaged or underserved or under served or vulnerab* or at risk or high risk) adj3 (adult? or famil* or person? or people? or population?)).ti,ab.

#	Searches
89	((minorit* or emigra* or immigra* or migra* or foreigner* or refugee* or transient*) adj3 (adult? or famil* or person? or people? or population?)).ti,ab.
90	or/81,84-89
91	(Crime Victims/ or "Adult Survivors of Child Abuse"/ or Alcoholism/ or Drug Users/ or Domestic Violence/ or Battered Women/ or Elder Abuse/ or Spouse Abuse/ or Human Trafficking/) use ppez
92	(crime victim/ or exp childhood trauma survivor/ or exp domestic violence/ or human trafficking/ or sex trafficking/ or exp drug dependence/ or injection drug user/) use emez
93	(crime victim? or revictim* or ((victim* or crime?) and survivor*)).ti,ab.
94	((domestic or marital or partner? or spous* or surviv*) adj3 (abus* or rape? or sex* assault* or violence)).ti,ab.
95	coercive control.ti,ab.
96	((female? or women?) adj (refuge? or shelter?)).ti,ab.
97	(exploitation or safe guarding or safeguarding).ti,ab.
98	((substance or drug or alcohol) adj (abuse or misuse?)) or "substance use" or "illegal drug use*" or addict* or alcoholi* or (problem* adj1 drinking)).tw.
99	or/91-98
100	or/21,37,44,55,68,74,78,90,99
101	(exp Communication Disorders/ or exp Sensory Disorders/ or exp Cognition Disorders/ or Cognitive Dysfunction/ or exp Disabled Persons/ or exp Intellectual Disability/ or Mental Competency/ or exp Mental Disorders/ or Mental Health/ or exp Brain Diseases/) use ppez
102	(exp disabled person/ or exp disability/ or exp sensory dysfunction/ or exp cognitive defect/ or exp mental capacity/ or exp mental disease/ or exp intellectual impairment/ or exp mental health care/ or exp brain disease/) use emez
103	(disable? or disabilit* or handicap* or retard* or disorder? or impair* or condition? or illness* or capacity or competen* or incompeten* or difficulty or difficulties or deficit? or dysfunc*).ti.
104	or/101-103
105	(Health Services/ or exp Community Health Services/ or exp Community Psychiatry/ or Custodial Care/ or Health Services for the Aged/ or Health Services for Persons with Disabilities/ or Long-Term Care/ or exp Mental Health Services/ or Palliative Care/ or Personal Health Services/ or exp Rehabilitation/ or Terminal Care/) use ppez
106	(health service/ or exp community care/ or exp elderly care/ or exp mental health service/ or long term care/ or custodial care/ or social psychiatry/ or palliative therapy/ or occupational health service/ or exp rehabilitation/ or terminal care/) use emez
107	((communit* or elder* or mental* or long term or custod* or psychosocial* or palliative or terminal or reabl* or rehabilitat*) adj3 (care or agenc* or deliver* or department? or facilit* or institution* or network* or organi?ation* or provider? or provision? or partner* or sector* or service* or setting*)).ti,ab.
108	((allied health professional? or AHP? or clinical or clinician? or consultant? or family doctor? or general practi* or GP? or medical or medic? or nurse? or occupational therapist? or physician? or ((speech or language) adj2 therapist?) or SLT?) adj3 (care or agenc* or deliver* or department? or facilit* or institution* or network* or organi?ation* or provider? or provision? or partner* or sector* or service* or setting*)).ti,ab.
109	or/105-108
110	100 and (104 or 109)
111	7 and 15 and 110
112	Economics/
113	Value of life/
114	exp "Costs and Cost Analysis"/
115	exp Economics, Hospital/
116	exp Economics, Medical/
117	Economics, Nursing/
118	Economics, Pharmaceutical/
119	exp "Fees and Charges"/
120	exp Budgets/
121	(or/112-120) use ppez
122	health economics/
123	exp economic evaluation/
124	exp health care cost/
125	exp fee/
126	budget/
127	funding/
128	(or/122-127) use emez
129	budget*.ti,ab.
130	cost*.ti.
131	(economic* or pharmaco?economic*).ti.
132	(price* or pricing*).ti,ab.
133	(cost* adj2 (effective* or utilit* or benefit* or minimi* or unit* or estimat* or variable*)).ab.
134	(financ* or fee or fees).ti,ab.
135	(value adj2 (money or monetary)).ti,ab.
136	or/129-135
137	121 or 128 or 136
138	Quality-Adjusted Life Years/ use ppez
139	Sickness Impact Profile/
140	quality adjusted life year/ use emez
141	"quality of life index"/ use emez

#	Searches
142	(quality adjusted or quality adjusted life year*).tw.
143	(qaly* or qal or qald* or qale* or qtime* or qwb* or daly).tw.
144	(illness state* or health state*).tw.
145	(hui or hui2 or hui3).tw.
146	(multiattribute* or "multi attribute").tw.
147	(utilit* adj3 (score*1 or valu* or health* or cost* or measur* or disease* or mean or gain or gains or index*)).tw.
148	utilities.tw.
149	(eq-5d* or eq5d* or eq-5* or eq5* or euroqual* or euro qual* or euroqual 5d* or euro qual 5d* or euro qol* or euroqol* or euro quol* or euroquol* or euro quol5d* or euroquol5d* or eur qol* or eurqol* or eur qol5d* or eurqol5d* or eur?qul* or eur?qul5d* or euro* quality of life or european qol).tw.
150	(euro* adj3 (5 d* or 5d* or 5 dimension* or 5dimension* or 5 domain* or 5domain*)).tw.
151	(sf36 or sf 36 or sf thirty six or sf thirtysix).tw.
152	(time trade off*1 or time tradeoff*1 or tto or timetradeoff*1).tw.
153	Quality of Life/ and ((quality of life or qol) adj (score*1 or measure*1)).tw.
154	Quality of Life/ and ec.fs.
155	Quality of Life/ and (health adj3 status).tw.
156	(quality of life or qol).tw. and Cost-Benefit Analysis/ use ppez
157	(quality of life or qol).tw. and cost benefit analysis/ use emez
158	((qol or hrqol or quality of life).tw. or *quality of life/) and ((qol or hrqol* or quality of life) adj2 (increas* or decreas* or improv* or declin* or reduc* or high* or low* or effect or effects or worse or score or scores or change*1 or impact*1 or impacted or deteriorat*)).ab.
159	Cost-Benefit Analysis/ use ppez and cost-effectiveness ratio*.tw. and (cost-effectiveness ratio* and (perspective* or life expectanc*)).tw.
160	cost benefit analysis/ use emez and cost-effectiveness ratio*.tw. and (cost-effectiveness ratio* and (perspective* or life expectanc*)).tw.
161	*quality of life/ and (quality of life or qol).ti.
162	quality of life/ and ((quality of life or qol) adj3 (improv* or chang*)).tw.
163	quality of life/ and health-related quality of life.tw.
164	Models, Economic/ use ppez
165	economic model/ use emez
166	((capabilit* or wellbeing or well-being) adj4 (measur* or index* or instrument* or tool*)).tw.
167	(subjective wellbeing or subjective well-being).tw.
168	(ASCOT or "adult social care outcomes toolkit").tw.
169	(SCRQOL or "social care- related quality of life").tw.
170	"capacity to benefit score".tw.
171	(ICECAP* or "Icepap capability measure for adults" or "Icepap capability measure for older people" or "Icepap supportive care measure" or "Icepap close person measure").tw.
172	(ASCOF or "adult social care outcomes framework").tw.
173	(Warwick Edinburgh Mental Well-being scale or WEMBS or S-WEMWBS).tw.
174	ONS-4.tw.
175	GHQ-12.tw.
176	(Personal Well-Being Index* or PWI-A).tw.
177	(OPUS* or "older people's utility scale").tw.
178	or/138-177
179	137 or 178
180	((Letter/ or Editorial/ or News/ or exp Historical Article/ or Anecdotes as Topic/ or Comment/ or Case Report/ or (letter or comment*).ti.) not (Randomized Controlled Trial/ or random*.ti,ab.)) or ((Animals not Humans).sh. or exp Animals, Laboratory/ or exp Animal Experimentation/ or exp Models, Animal/ or exp Rodentia/ or (rat or rats or mouse or mice).ti.)) use ppez
181	((letter.pt. or letter/ or note.pt. or editorial.pt. or case report/ or case study/ or (letter or comment*).ti.) not (randomized controlled trial/ or random*.ti,ab.)) or ((animal/ not human/) or nonhuman/ or exp animal experiment/ or exp experimental animal/ or animal model/ or exp rodent/ or (rat or rats or mouse or mice).ti.)) use emez
182	180 or 181
183	limit 179 to (conference abstract or conference paper or conference review or conference proceeding) [Limit not valid in Ovid MEDLINE(R),Ovid MEDLINE(R) Daily Update,Ovid MEDLINE(R) In-Process,Ovid MEDLINE(R) Publisher; records were retained]
184	183 use emez
185	179 not (182 or 184)
186	111 and 185
187	limit 186 to english language
188	limit 187 to yr="2010 -Current"

1
2
3
4
5
6

Database(s): Centre for Reviews and Dissemination (CRD): Health Technology Assessments (HTA); NHS Economic Evaluation Database (NHS EED)

Date of last search: 08 June 2021

Search
(complex* or chang* or chronic or coexist* or co exist* or combin* or concomitant or comorbid* or co morbid* or cooccur* or co occur* or develop* or high support or life limiting or long standing or longstanding or long term or multi* or ongoing or on going or persistent or priorit* or serious* or severe or several or simultaneous or special"):TI AND (need* or care or circumstance* or condition* or existence* or experience* or initiative* or intervention* or issue* or live* or mitigat* or patient* or person* or people or problem* or realit* or situation* or social factor* or support or target*):TI AND (social work* or social care* or care coordinator* or care co ordinator* or case manager* or caseworker* or case worker* or best interest* assessor* or approved mental health professional* or AMHP* or social welfare or social assistance or local authorit* or local council* or state support or social prescribing or welfare service*) IN NHSEED, HTA FROM 2010 TO 2021

1

2 **Database(s): CINAHL Plus (EBSCO Host)**

3 EBSCO Host CINAHL Plus

4 Date of last search: 08 June 2021

5

#	Query	Limiters/Expanders
S60	S17 AND S59	Limiters - Publication Year: 2010-2020; English Language; Exclude MEDLINE records Expanders - Apply equivalent subjects Search modes - Boolean/Phrase
S59	S23 OR S58	Expanders - Apply equivalent subjects Search modes - Boolean/Phrase
S58	S24 OR S25 OR S26 OR S27 OR S28 OR S29 OR S30 OR S31 OR S32 OR S33 OR S34 OR S35 OR S36 OR S37 OR S38 OR S39 OR S40 OR S41 OR S42 OR S43 OR S44 OR S45 OR S46 OR S47 OR S48 OR S49 OR S50 OR S51 OR S52 OR S53 OR S54 OR S55 OR S56 OR S57	Expanders - Apply equivalent subjects Search modes - Boolean/Phrase
S57	TX (OPUS* or "older people's utility scale")	Expanders - Apply equivalent subjects Search modes - Boolean/Phrase
S56	TX ("Personal Well-Being Index*" or "PWI-A")	Expanders - Apply equivalent subjects Search modes - Boolean/Phrase
S55	TX "GHQ-12"	Expanders - Apply equivalent subjects Search modes - Boolean/Phrase
S54	TX "ONS-4"	Expanders - Apply equivalent subjects Search modes - SmartText Searching
S53	TX "ONS-4"	Expanders - Apply equivalent subjects Search modes - Boolean/Phrase
S52	TX ("Warwick Edinburgh Mental Well-being scale" or WEMBS or S-WEMWBS)	Expanders - Apply equivalent subjects Search modes - Boolean/Phrase
S51	TX (ASCOF or "adult social care outcomes framework")	Expanders - Apply equivalent subjects Search modes - Boolean/Phrase
S50	TX (ICECAP* or "Icepap capability measure for adults" or "Icepap capability measure for older people" or "Icepap supportive care measure" or "Icepap close person measure")	Expanders - Apply equivalent subjects Search modes - Boolean/Phrase
S49	TX "capacity to benefit score"	Expanders - Apply equivalent subjects Search modes - SmartText Searching
S48	TX "capacity to benefit score"	Expanders - Apply equivalent subjects Search modes - Boolean/Phrase
S47	TX (SCRQOL or "social care- related quality of life")	Expanders - Apply equivalent subjects Search modes - Boolean/Phrase
S46	TX (ASCOT or "adult social care outcomes toolkit")	Expanders - Apply equivalent subjects Search modes - Boolean/Phrase
S45	TX ("subjective wellbeing" or "subjective well-being")	Expanders - Apply equivalent subjects Search modes - Boolean/Phrase
S44	TX ((capabilit* or wellbeing or well-being) N3 (measur* or index* or instrument* or tool*))	Expanders - Apply equivalent subjects Search modes - SmartText Searching
S43	TX ((capabilit* or wellbeing or well-being) N3 (measur* or index* or instrument* or tool*)),tw.	Expanders - Apply equivalent subjects Search modes - Boolean/Phrase
S42	(MH "Quality of Life") AND TX (health-related quality of life)	Expanders - Apply equivalent subjects Search modes - Boolean/Phrase
S41	(MH "Quality of Life") AND TI (quality of life or qol)	Expanders - Apply equivalent subjects Search modes - Boolean/Phrase
S40	AB ((qol or hrqol or quality of life) AND ((qol or hrqol* or (quality of life N2 (increas* or decreas* or improv* or declin* or reduc* or high* or low* or effect or effects or worse or score or scores or change*1 or impact*1 or impacted or deteriorat*)))	Expanders - Apply equivalent subjects Search modes - Boolean/Phrase
S39	(MH "Cost Benefit Analysis") AND TX ((quality of life or qol) or (cost-effectiveness ratio* and (perspective* or life expectanc*)))	Expanders - Apply equivalent subjects Search modes - Boolean/Phrase

#	Query	Limiters/Expanders
S38	(MH "Quality of Life") AND TX (health N3 status)	Expanders - Apply equivalent subjects Search modes - Boolean/Phrase
S37	(MH "Quality of Life") AND TX ((quality of life or qol) N (score*1 or measure*1))	Expanders - Apply equivalent subjects Search modes - SmartText Searching
S36	(MH "Quality of Life") AND TX ((quality of life or qol) N (score*1 or measure*1))	Expanders - Apply equivalent subjects Search modes - Boolean/Phrase
S35	TX (time trade off*1 or time tradeoff*1 or tto or timetradeoff*1)	Expanders - Apply equivalent subjects Search modes - Boolean/Phrase
S34	TX (sf36 or sf 36 or sf thirty six or sf thirtysix)	Expanders - Apply equivalent subjects Search modes - Boolean/Phrase
S33	TX (euro* N3 (5 d* or 5d* or 5 dimension* or 5dimension* or 5 domain* or 5domain*))	Expanders - Apply equivalent subjects Search modes - Boolean/Phrase
S32	TX (eq-5d* or eq5d* or eq-5* or eq5* or euroqual* or euro qual* or euroqual 5d* or euro qual 5d* or euro qol* or euroqol* or euro qual* or euroqol* or euro qual5d* or euroqol5d* or eur qol* or eurqol* or eur qol5d* or eurqol5d* or eur?qul* or eur?qul5d* or euro* quality of life or european qol)	Expanders - Apply equivalent subjects Search modes - Boolean/Phrase
S31	TI utilities	Expanders - Apply equivalent subjects Search modes - Boolean/Phrase
S30	TX (utilit* N3 (score*1 or valu* or health* or cost* or measur* or disease* or mean or gain or gains or index*))	Expanders - Apply equivalent subjects Search modes - Boolean/Phrase
S29	TX (multiattribute* or multi attribute*)	Expanders - Apply equivalent subjects Search modes - Boolean/Phrase
S28	TX (hui or hui2 or hui3)	Expanders - Apply equivalent subjects Search modes - Boolean/Phrase
S27	TX (illness state* or health state*)	Expanders - Apply equivalent subjects Search modes - Boolean/Phrase
S26	TX (quality adjusted or quality adjusted life year* or qaly* or qal or qald* or qale* or qtime* or qwb* or daly)	Expanders - Apply equivalent subjects Search modes - Boolean/Phrase
S25	(MH "Sickness Impact Profile")	Expanders - Apply equivalent subjects Search modes - Boolean/Phrase
S24	(MH "Quality-Adjusted Life Years")	Expanders - Apply equivalent subjects Search modes - Boolean/Phrase
S23	S18 OR S19 OR S20 OR S21 OR S22	Expanders - Apply equivalent subjects Search modes - Boolean/Phrase
S22	TX (value N2 (money or monetary))	Expanders - Apply equivalent subjects Search modes - Boolean/Phrase
S21	TX (cost* N2 (effective* or utilit* or benefit* or minimi* or unit* or estimat* or variable*))	Expanders - Apply equivalent subjects Search modes - Boolean/Phrase
S20	TI cost* or economic* or pharmaco?economic*	Expanders - Apply equivalent subjects Search modes - Boolean/Phrase
S19	TX budget* or fee or fees or finance* or price* or pricing	Expanders - Apply equivalent subjects Search modes - Boolean/Phrase
S18	(MH "Fees and Charges+") OR (MH "Costs and Cost Analysis+") OR (MH "Economics") OR (MH "Economic Value of Life") OR (MH "Economics, Pharmaceutical") OR (MH "Economic Aspects of Illness") OR (MH "Resource Allocation+")	Expanders - Apply equivalent subjects Search modes - Boolean/Phrase
S17	S9 AND S16	Limiters - Publication Year: 2010-2020; English Language; Exclude MEDLINE records Expanders - Apply equivalent subjects Search modes - Boolean/Phrase
S16	S10 OR S11 OR S12 OR S13 OR S14 OR S15	Expanders - Apply equivalent subjects Search modes - Boolean/Phrase
S15	TX (impact adj3 daily W2 (life or lives or living or activit* or experienc*))	Expanders - Apply equivalent subjects Search modes - SmartText Searching
S14	TX (dual diagnos#s or multi* diagnos#s)	Expanders - Apply equivalent subjects Search modes - Boolean/Phrase
S13	TX complex case?	Expanders - Apply equivalent subjects Search modes - Boolean/Phrase
S12	TX SHCN	Expanders - Apply equivalent subjects Search modes - Boolean/Phrase
S11	TX ((complex* or chang* or chronic or coexist* or co exist* or combin* or concomitant or comorbid* or co-morbid* or cooccur* or co occur* or develop* or high support or (intellectual* and physical*) or life limiting or long standing or longstanding or long term or (mental* and physical*) or multi* or ongoing or on-going or persistent or priorit* or serious* or severe or several or simultaneous or special*) W4 (need? or care or circumstance* or condition? or existence? or experience? or initiative? or intervention? or issue* or live? or mitigat* or patient? or person? or	Expanders - Apply equivalent subjects Search modes - SmartText Searching

#	Query	Limiters/Expanders
S10	people or problem* or realit* or situation? or social factor* or support or target*) (MH "Comorbidity")	Expanders - Apply equivalent subjects Search modes - Boolean/Phrase
S9	S1 OR S2 OR S3 OR S4 OR S5 OR S6 OR S7 OR S8	Expanders - Apply equivalent subjects Search modes - Boolean/Phrase
S8	TX (social welfare or social assistance or local authorit* or local council* or state support or social prescribing or welfare service?)	Expanders - Apply equivalent subjects Search modes - Boolean/Phrase
S7	TX (("approved mental health" W2 (professional? or personnel or staff or team* or worker?)) or AMHP)	Expanders - Apply equivalent subjects Search modes - Boolean/Phrase
S6	TX (care coordinator? or care co-ordinator? or case manager* or caseworker* or case-worker* or case worker* or best interest? assessor?)	Expanders - Apply equivalent subjects Search modes - Boolean/Phrase
S5	TX ((social* or case* or outreach or personal or relief or support) W3 (advisor? or agenc* or assistant? or care* or department* or deliver* or institution* or intervention? or lead* or manager? or organi#ation* or personnel or planning or practi* or profession* or program* or provider? or provision or sector* or service? or setting? or staff or supervi* or system* or team* or unit? or work*))	Expanders - Apply equivalent subjects Search modes - Boolean/Phrase
S4	((MH "Mental Health Services+") AND ((MH "Accountability") OR (MH "Professional Practice") OR (MH "Professional Role")))	Expanders - Apply equivalent subjects Search modes - Boolean/Phrase
S3	(MH "Accountable Care Organizations")	Expanders - Apply equivalent subjects Search modes - Boolean/Phrase
S2	(MH "Case Management") OR (MH "Case Managers")	Expanders - Apply equivalent subjects Search modes - Boolean/Phrase
S1	(MH "Social Welfare") OR (MH "Social Work") OR (MH "Social Work Practice") OR (MH "Social Work Service") OR (MH "Social Worker Attitudes") OR (MH "Social Workers")	Expanders - Apply equivalent subjects Search modes - Boolean/Phrase

1

2 **Database(s): Cochrane Library**

3

4 Cochrane Central Register of Controlled Trials, Issue 5 of 12, May 2021

5

6 Data of last search: 08 June 2021

7

ID	Search
#1	MeSH descriptor: [Social Work] explode all trees
#2	MeSH descriptor: [Social Work, Psychiatric] this term only
#3	MeSH descriptor: [Social Workers] this term only
#4	MeSH descriptor: [Social Work Department, Hospital] this term only
#5	MeSH descriptor: [Social Welfare] this term only
#6	MeSH descriptor: [Case Management] this term only
#7	MeSH descriptor: [Case Managers] this term only
#8	MeSH descriptor: [Accountable Care Organizations] this term only
#9	MeSH descriptor: [Mental Health Services] explode all trees
#10	((social* or case* or outreach or personal or relief or support) next/3 (advisor* or agenc* or assistan* or care* or department* or deliver* or institution* or intervention* or lead* or manager* or organisation* or organization* or personnel or planning or practi* or profession* or program* or provider* or provision or sector* or service* or setting* or staff or supervi* or system* or team* or unit* or work*)):ti,ab
#11	("care coordinator*" or "care co ordinator*" or "case manager*" or caseworker* or "case worke*" or "best interest assessor*" or "best interests assessor*"):ti,ab
#12	((("approved mental health" next/3 (professional or personnel or staff or team* or worker*)) or AMHP):ti,ab
#13	("social welfare" or "social assistance" or "local authorit*" or "local council*" or "state support" or "social prescribing" or "welfare service*"):ti,ab
#14	{or #1-#13}
#15	MeSH descriptor: [Comorbidity] explode all trees
#16	((complex* or chang* or chronic or coexist* or "co exist*" or combin* or concomitant or comorbid* or "co morbid*" or cooccur* or "co occur*" or develop* or "high support" or (intellectual* and physical*) or "life limiting" or "long standing" or longstanding or "long term" or (mental* and physical*) or multi* or ongoing or "on going" or persistent or priorit* or serious* or severe or several or simultaneous or special*) next/4 (need* or care or circumstance* or condition* or existence* or experience* or initiative* or intervention* or issue* or live* or mitigat* or patient* or person* or people? or problem* or realit* or situation* or "social factor*" or support or target*)):ti,ab
#17	(SHCN or "complex* case*"):ti,ab
#18	("dual diagnosis" or "dual diagnoses" or "multi* diagnosis" or "multi* diagnoses"):ti,ab
#19	(impact next/3 daily next (life or living or activit* or experienc*)):ti,ab
#20	{or #15-#19}
#21	#14 and #20 with Cochrane Library publication date Between Jan 2010 and Dec 2020
#22	MeSH descriptor: [Economics] this term only
#23	MeSH descriptor: [Value of Life] this term only

ID	Search
#24	MeSH descriptor: [Costs and Cost Analysis] explode all trees
#25	MeSH descriptor: [Economics, Hospital] explode all trees
#26	MeSH descriptor: [Economics, Medical] explode all trees
#27	MeSH descriptor: [Economics, Nursing] this term only
#28	MeSH descriptor: [Economics, Pharmaceutical] this term only
#29	MeSH descriptor: [Fees and Charges] explode all trees
#30	MeSH descriptor: [Budgets] explode all trees
#31	budget*.ti,ab
#32	cost*.ti
#33	(economic* or pharmaco?economic*):ti
#34	(price* or pricing*):ti,ab
#35	(cost* next/2 (effective* or utilit* or benefit* or minimi* or unit* or estimat* or variable*)):ab
#36	(financ* or fee or fees):ti,ab
#37	(value next/2 (money or monetary)):ti,ab
#38	{or #22-#37}
#39	MeSH descriptor: [Quality-Adjusted Life Years] this term only
#40	MeSH descriptor: [Sickness Impact Profile] this term only
#41	("quality adjusted" or "quality adjusted life year*"):ti,ab
#42	(qaly* or qal or qald* or qale* or qtime* or qwb* or daly):ti,ab
#43	("illness state*" or "health state*"):ti,ab
#44	(hui or hui2 or hui3):ti,ab
#45	(multiattribute* or "multi attribute*"):ti,ab
#46	(utilit* next/3 (score? or valu* or health* or cost* or measur* or disease* or mean or gain or gains or index*)):ti,ab
#47	utilities:ti,ab
#48	("eq-5d*" or eq5d* or "eq-5*" or eq5* or euroqual* or "euro qual*" or "euroqual 5d*" or "euro qual 5d*" or "euro qol*" or euroqol* or "euro quol*" or euroquol* or "euro quol5d*" or euroquol5d* or "eur qol*" or eurqol* or "eur qol5d*" or eurqol5d* or eur?qul* or eur?qul5d* or "euro* quality of life" or "european qol"):ti,ab
#49	(euro* next/3 ("5 d*" or 5d* or "5 dimension*" or 5dimension* or "5 domain*" or 5domain*)):ti,ab
#50	(sf36 or "sf 36" or "sf thirty six" or "sf thirtysix"):ti,ab
#51	("time trade off?" or "time tradeoff?" or tto or timetradeoff?):ti,ab
#52	{or #39-#51}
#53	MeSH descriptor: [Quality of Life] this term only
#54	((quality of life" or qol) next (score? or measure?)):ti,ab
#55	(health next/3 status):ti,ab
#56	("quality of life" or qol):ti
#57	((quality of life" or qol) next/3 (improv* or chang*)):ti,ab
#58	"health related quality of life":ti,ab
#59	#53 and {or #54-#58}
#60	MeSH descriptor: [Cost-Benefit Analysis] this term only
#61	("cost effectiveness ratio*" and (perspective* or "life expectanc*")):ti,ab
#62	("quality of life" or qol):ti,ab
#63	#60 and {or #61-#62}
#64	(qol or hrqol or "quality of life"):ti
#65	("quality of life" and ((qol or hrqol* or "quality of life") next/2 (increas* or decreas* or improv* or declin* or reduc* or high* or low* or effect or effects or worse or score? or change? or impact? or impacted or deteriorat*)):ab
#66	MeSH descriptor: [Models, Economic] explode all trees
#67	((capabilit* or wellbeing or "well being") next/3 (measur* or index* or instrument* or tool*)):ti,ab
#68	("subjective wellbeing" or "subjective well being"):ti,ab
#69	(ASCOT or "adult social care outcomes toolkit"):ti,ab
#70	(SCRQOL or "social care related quality of life"):ti,ab
#71	"capacity to benefit score":ti,ab
#72	(ICECAP* or "Icepap capability measure for adults" or "Icepap capability measure for older people" or "Icepap supportive care measure" or "Icepap close person measure"):ti,ab
#73	(ASCOF or "adult social care outcomes framework"):ti,ab
#74	("Warwick Edinburgh Mental Well being scale" or WEMBS or S-WEMWBS):ti,ab
#75	"ONS-4":ti,ab
#76	"GHQ-12":ti,ab
#77	("Personal Well Being Index*" or "PWI-A"):ti,ab
#78	(OPUS* or "older people's utility scale"):ti,ab
#79	{or #64-#78}
#80	#52 or #59 or #63 or #79
#81	#38 or #80
#82	#21 and #81 with Publication Year from 2010 to 2020, in Trials

1

2 Database(s): EMCare (Ovid)

3 EMCare 1995 to present.

1 Date of last search: 08 June 2021

2

#	Searches
1	social care/ or social welfare/ or social work/ or social work practice/ or social worker/ or case management/ or case manager/ or national health service/ or accountable care organization/ or mental health care personnel/
2	((social* or case* or outreach or personal or relief or support) adj3 (advisor? or agenc* or assistant? or care* or department* or deliver* or institution* or intervention? or lead* or manager? or organi?ation* or personnel or planning or practi* or profession* or program* or provider? or provision or sector* or service? or setting? or staff or supervi* or system* or team* or unit? or work*)).ti,ab.
3	(care coordinator? or care co-ordinator? or case manager* or caseworker* or case-worker* or case worker* or best interest? assessor?).ti,ab.
4	((("approved mental health" adj (professional? or personnel or staff or team* or worker?)) or AMHP).ti,ab.
5	(social welfare or social assistance or local authorit* or local council* or state support or social prescribing or welfare service?).ti,ab.
6	or/1-5
7	comorbidity/
8	((complex* or chang* or chronic or coexist* or co exist* or combin* or concomitant or comorbid* or co-morbid* or cooccur* or co occur* or develop* or high support or (intellectual* and physical*) or life limiting or long standing or longstanding or long term or (mental* and physical*) or multi* or ongoing or on-going or persistent or priorit* or serious* or severe or several or simultaneous or special*) adj4 (need? or care or circumstance* or condition? or existence? or experience? or initiative? or intervention? or issue* or live? or mitigat* or patient? or person? or people or problem* or realit* or situation? or social factor* or support or target*)).ti,ab.
9	SHCN.ti,ab.
10	complex case?.ti,ab.
11	(dual diagnos?s or multi* diagnos?s).ti,ab.
12	(impact adj3 daily adj (life or lives or living or activit* or experienc*)).ti,ab.
13	or/7-12
14	exp social problem/
15	exp human activities/ or exp "lifestyle and related phenomena"/
16	14 and 15
17	unemployment/ or employment status/ or supported employment/ or sheltered workshop/ or vocational rehabilitation/ or absenteeism/ or job security/ or return to work/
18	((chang* or develop* or enhanc* or initiative? or intervention? or program* or address* or improv* or target*) adj3 (employment or unemployment or unemploy*)).ti,ab.
19	(support* adj3 (employment? or work or vocational)).ti,ab.
20	(employment or unemploy* or underemploy* or under employ*).ti.
21	individual placement?.ti,ab.
22	((finding or gaining or obtaining or keeping or sustaining) adj3 (work or job or employment)).ti,ab.
23	(social firms or (sheltered adj (employment or work))).ti,ab.
24	(precar* adj1 (employment or work)).ti,ab.
25	(paid work or paid employment).ti,ab.
26	(voluntary work or volunteering or unpaid work).ti,ab.
27	(meaningful adj (activit* or employment or work)).ti,ab.
28	("return to work" or "back to work" or absenteeism).ti,ab.
29	((alleviat* or ease or manag* or prevent* or reduc* or stop*) adj (work* or disabilit*)).ti,ab.
30	((labo?r force or employment or unemployment) adj status).ti,ab.
31	or/17-30
32	family functioning/ or family conflict/
33	((family or families or intergenerat* or inter-generat*) adj (relation* or breakdown or conflict?)).ti,ab.
34	((sexual or intimate or partner?) adj (relation* or conflict?)).ti,ab.
35	((develop* or enhanc* or initiative? or intervention? or program* or address* or improv* or promot* or target*) adj2 relationship?).ti,ab.
36	((carer? or partner or relationship?) adj support*).ti,ab.
37	or/32-36
38	housing/ or assisted living facility/ or community living/ or emergency shelter/ or homelessness/ or exp homeless person/ or deinstitutionalization/ or halfway house/
39	housing.ti.
40	((housing or accommodation or neighbo?rhood? or residence*) adj3 (chang* or address* or condition* or develop* or enhanc* or improv* or initiative? or instability or intervention? or mitigat* or program* or stability or target*)).ti,ab.
41	homeless*.ti,ab.
42	(permanent housing or social housing).ti,ab.
43	((assisted or autonomous or independent or secur* or sheltered or support* or sustain*) adj3 (housing or accommodat* or dwelling? or residen* or tenanc* or tenure?)).ti,ab.
44	((halfway or satellite) adj (accommodat* or dwelling? or home? or house?)).ti,ab.
45	(neighbo?rhood? adj (characteristic* or intervention* or program*)).ti,ab.
46	((environment* or housing or neighbo?rhood?) and infrastructure).ti,ab.
47	or/38-46
48	money/ or economic status/ or household economic status/ or social welfare/ or socioeconomics/ or household income/ or personal income/ or family income/ or financial management/ or "salary and fringe benefit"/ or pension/ or salary/ or poverty/ or exp lowest income group/

#	Searches
49	money.ti.
50	((access* or improv* or manag* or supplement*) adj2 (cash or money or financ* or income? or savings)).ti,ab.
51	((financial adj (autonomy or security or insecurity)) or loans or borrowing or budgeting or microcredit or microfinance or social fund*).ti,ab.
52	(extreme poverty or high poverty).ti,ab. or poverty.ti.
53	((address* or escap* or improv* or "out of" or support* or target*) adj2 (depriv* or poor or poverty)).ti,ab.
54	((food or fuel) adj (insecurity or poverty)) or food bank?.ti,ab.
55	((alleviat* or ease or manag* or prevent* or reduc* or stop*) adj2 (debt? or poverty or ((economic or financial) adj hardship?)).ti,ab.
56	((basic or low or minimum) adj3 (wage? or income?)).ti,ab.
57	(family adj (income? or tax credit?)).ti,ab.
58	welfare benefit?.ti,ab.
59	or/48-58
60	offender/ or exp maladjustment/ or prisoner/
61	((crime? or criminal* or offend* or offence? or recidiv*) adj3 (initiative? or intervention? or program* or mitigat* or address* or diver* or prevent* rehabilitat*).ti,ab.
62	((inmate? or prisoner? or convict? or felon?) adj3 (rehabilitat* or releas*).ti,ab.
63	(community adj2 (reentry or re-entry)).ti,ab.
64	or/60-63
65	"social determinants of health"/ or social disability/ or loneliness/ or social isolation/ or social alienation/ or community involvement/ or *social support/ or *social network/ or *psychosocial environment/ or psychosocial rehabilitation/
66	(community involvement or community network* or loneliness or social* alienat* or social connect* or social inclusion or social* isolat* or social network* or social participation or social stigma*).ti,ab.
67	or/65-66
68	human rights/ or civil rights/ or human dignity/ or personal autonomy/ or social justice/
69	exp migrant/ or minority group/ or vulnerable population/
70	((civil* or human or legal or social) adj rights) or (social justice or equal protection or social protection)).ti,ab.
71	((social or community or neighbo?rhood?) adj3 (equit* or inequit* or inequalit*).ti,ab.
72	(digital adj (inclusion or exclusion or divide or equit* or inequit* or inequalit*).ti,ab.
73	((disadvantaged or underserved or under served or vulnerab* or at risk or high risk) adj3 (adult? or famil* or person? or people? or population?)).ti,ab.
74	((minorit* or emigra* or immigra* or migra* or foreigner* or refugee* or transient*) adj3 (adult? or famil* or person? or people? or population?)).ti,ab.
75	or/68-74
76	crime victim/ or exp childhood trauma survivor/ or exp domestic violence/ or human trafficking/ or sex trafficking/ or exp drug dependence/ or injection drug user/
77	(crime victim? or revictim* or ((victim* or crime?) and survivor*).ti,ab.
78	((domestic or marital or partner? or spous* or surviv*) adj3 (abus* or rape? or sex* assault* or violence)).ti,ab.
79	coercive control.ti,ab.
80	((female? or women?) adj (refuge? or shelter?)).ti,ab.
81	(exploitation or safe guarding or safeguarding).ti,ab.
82	((substance or drug or alcohol) adj (abuse or misuse?)) or "substance use" or "illegal drug use*" or addict* or alcoholi* or (problem* adj1 drinking)).tw.
83	or/76-82
84	or/16,31,37,47,59,64,67,75,83
85	exp disabled person/ or exp disability/ or exp sensory dysfunction/ or exp cognitive defect/ or exp mental capacity/ or exp mental disease/ or exp intellectual impairment/ or exp mental health care/ or exp brain disease/
86	(disable? or disabilit* or handicap* or retard* or disorder? or impair* or condition? or illness* or capacity or competen* or incompeten* or difficulty or difficulties or deficit? or dysfunct*).ti.
87	or/85-86
88	health service/ or exp community care/ or exp elderly care/ or exp mental health service/ or long term care/ or custodial care/ or social psychiatry/ or palliative therapy/ or occupational health service/ or exp rehabilitation/ or terminal care/
89	((communit* or elder* or mental* or long term or custod* or psychosocial* or palliative or terminal or reabl* or rehabilitat*) adj3 (care or agenc* or deliver* or department? or facilit* or institution* or network* or organi?ation* or provider? or provision? or partner* or sector* or service* or setting*).ti,ab.
90	((allied health professional? or AHP? or clinical or clinician? or consultant? or family doctor? or general practi* or GP? or medical or medic? or nurse? or occupational therapist? or physician? or ((speech or language) adj2 therapist?) or SLT?) adj3 (care or agenc* or deliver* or department? or facilit* or institution* or network* or organi?ation* or provider? or provision? or partner* or sector* or service* or setting*).ti,ab.
91	or/88-90
92	84 and (87 or 91)
93	6 and 13 and 92
94	health economics/
95	exp economic evaluation/
96	exp health care cost/
97	exp fee/
98	budget/
99	funding/

#	Searches
100	budget*.ti,ab.
101	cost*.ti.
102	(economic* or pharmaco?economic*).ti.
103	(price* or pricing*).ti,ab.
104	(cost* adj2 (effective* or utilit* or benefit* or minimi* or unit* or estimat* or variable*).ab.
105	(financ* or fee or fees).ti,ab.
106	(value adj2 (money or monetary)).ti,ab.
107	or/94-106
108	Sickness Impact Profile/
109	quality adjusted life year/
110	"quality of life index"/
111	(quality adjusted or quality adjusted life year*).tw.
112	(qaly* or qal or qald* or qale* or qtime* or qwb* or daly).tw.
113	(illness state* or health state*).tw.
114	(hui or hui2 or hui3).tw.
115	(multiattribute* or multi attribute*).tw.
116	(utilit* adj3 (score*1 or valu* or health* or cost* or measur* or disease* or mean or gain or gains or index*).tw.
117	utilities.tw.
118	(eq-5d* or eq5d* or eq-5* or eq5* or euroqual* or euro qual* or euroqual 5d* or euro qual 5d* or euro qol* or euroqol* or euro quol* or euroquol* or euro quol5d* or euroquol5d* or eur qol* or eurqol* or eur qol5d* or eurqol5d* or eur?qul* or eur?qul5d* or euro* quality of life or european qol).tw.
119	(euro* adj3 (5 d* or 5d* or 5 dimension* or 5dimension* or 5 domain* or 5domain*).tw.
120	(sf36 or sf 36 or sf thirty six or sf thirtysix).tw.
121	(time trade off*1 or time tradeoff*1 or tto or timetradeoff*1).tw.
122	"quality of life"/ and ((quality of life or qol) adj (score*1 or measure*1)).tw.
123	"quality of life"/ and (health adj3 status).tw.
124	(quality of life or qol).tw. and cost benefit analysis/
125	((qol or hrqol or quality of life).tw. or "quality of life"/) and ((qol or hrqol* or quality of life) adj2 (increas* or decreas* or improv* or declin* or reduc* or high* or low* or effect or effects or worse or score or scores or change*1 or impact*1 or impacted or deteriorat*).ab.
126	cost benefit analysis/ and cost-effectiveness ratio*.tw. and (cost-effectiveness ratio* and (perspective* or life expectanc*).tw.
127	"quality of life"/ and (quality of life or qol).ti.
128	"quality of life"/ and ((quality of life or qol) adj3 (improv* or chang*).tw.
129	"quality of life"/ and health-related quality of life.tw.
130	economic model/
131	((capabilit* or wellbeing or well-being) adj4 (measur* or index* or instrument* or tool*).tw.
132	(subjective wellbeing or subjective well-being).tw.
133	(ASCOT or "adult social care outcomes toolkit").tw.
134	(SCRQOL or "social care- related quality of life").tw.
135	"capacity to benefit score".tw.
136	(ICECAP* or "Icepap capability measure for adults" or "Icepap capability measure for older people" or "Icepap supportive care measure" or "Icepap close person measure").tw.
137	(ASCOF or "adult social care outcomes framework").tw.
138	(Warwick Edinburgh Mental Well-being scale or WEMBS or S-WEMWBS).tw.
139	ONS-4.tw.
140	GHQ-12.tw.
141	(Personal Well-Being Index* or PWI-A).tw.
142	(OPUS* or "older people's utility scale").tw.
143	or/108-142
144	107 or 143
145	((letter.pt. or letter/ or note.pt. or editorial.pt. or case report/ or case study/ or (letter or comment*).ti.) not (randomized controlled trial/ or random*.ti,ab.)) or ((animal/ not human/) or nonhuman/ or exp animal experiment/ or exp experimental animal/ or animal model/ or exp rodent/ or (rat or rats or mouse or mice).ti.)
146	limit 144 to (conference abstract or conference paper or conference review or conference proceeding)
147	144 not (145 or 146)
148	93 and 147
149	limit 148 to english language
150	limit 149 to yr="2010 -Current"

1

- 2 Database(s): Applied Social Science Index & Abstracts (ASSIA); International
- 3 Bibliography of the Social Sciences (IBSS); Sociological Abstracts; Social Services
- 4 Abstracts (Proquest interface)

- 1 Applied Social Sciences Index & Abstracts (ASSIA) (1987 - current) [via Proquest];
- 2 International Bibliography of the Social Sciences (IBSS) (1951 - current); Sociological
- 3 Abstracts (1952 - current) [via Proquest]; Social Services Abstracts [via Proquest].

4 Date of last search: 08 June 2021

5

6 Health Economics

7

Set	Searched for
S1	(AB, TI ("budget* or cost* or economic* or fee or fees or financ* or money or monetary or pharmacoeconomic* or price* or pricing) AND pd(20100101-20210608))
S2	AND (((AB, TI((social* OR case* OR communit* OR outreach OR personal OR relief OR support) NEAR/3 (advisor? OR agenc* OR assistant? OR care* OR department* OR deliver* OR institution* OR intervention? OR lead* OR manager? OR organi?ation* OR personnel OR planning OR practi* OR profession* OR program* OR provider? OR provision OR sector* OR service? OR setting? OR staff OR supervi* OR system* OR team* OR unit? OR work*)) OR (AB, TI (care coordinator? OR care co coordinator? OR case manager* OR caseworker* OR case worker* OR best interest? assessor?)) OR (AB, TI (social welfare OR social assistance OR local authorit* OR state support OR social prescribing welfare service? OR approved mental health profession* OR AMHP*))) AND la.exact("ENG") AND pd(20100101-20210608))
S3	AND ((AB, TI(complex* OR chang* OR chronic OR coexist* OR co exist* OR combin* OR concomitant OR comorbid* OR co morbid* OR cooccur* OR co occur* OR develop* OR high support OR life limiting OR long standing OR longstanding OR long term OR multi* OR ongoing OR on going OR persistent OR priorit* OR serious* OR severe OR several OR simultaneous OR special*) AND pd(20100101-20210608))
S4	AND (AB, TI(need? OR care OR circumstance* OR condition? OR existence? OR experience? OR initiative? OR intervention? OR issue* OR live? OR mitigat* OR patient? OR person? OR people OR problem* OR realit* OR situation? OR social factor* OR support OR target*) AND pd(20100101-20210608)))) AND la.exact("ENG")

8

9 Health Utility Values

10

Set	Searched for
S1	(AB, TI (eq 5d* OR eq5d* OR eq 5* OR eq5* OR euroqual* OR euro qual* OR euroqual 5d* OR euro qual 5d* OR euro qol* OR euroqol* OR euro quol* OR euro quol5d* OR euroquol5d* OR eur qol* OR eurqol* OR eur qol5d* OR eurqol5d* OR eurqul* OR eurqul5d* OR euro* quality of life OR european qol OR sf36 OR sf 36 OR sf thirty six OR sf thirtysix OR time trade off* OR time tradeoff* OR tto OR timetradeoff* OR subjective wellbeing OR subjective well being OR ASCOT OR adult social care outcomes toolkit OR SCRQOL OR social care related quality of life OR capacity to benefit score OR ICECAP* OR Icepap capability measure for adults OR Icepap capability measure for older people OR Iccap supportive care measure OR Iccap close person measure OR ASCOF OR adult social care outcomes framework) AND pd(20100101-20210608))
S2	AND (((AB, TI((social* OR case* OR communit* OR outreach OR personal OR relief OR support) NEAR/3 (advisor? OR agenc* OR assistant? OR care* OR department* OR deliver* OR institution* OR intervention? OR lead* OR manager? OR organi?ation* OR personnel OR planning OR practi* OR profession* OR program* OR provider? OR provision OR sector* OR service? OR setting? OR staff OR supervi* OR system* OR team* OR unit? OR work*)) OR (AB, TI (care coordinator? OR care co coordinator? OR case manager* OR caseworker* OR case worker* OR best interest? assessor?)) OR (AB, TI (social welfare OR social assistance OR local authorit* OR state support OR social prescribing welfare service? OR approved mental health profession* OR AMHP*))) AND la.exact("ENG") AND pd(20100101-20210608))
S3	AND ((AB, TI(complex* OR chang* OR chronic OR coexist* OR co exist* OR combin* OR concomitant OR comorbid* OR co morbid* OR cooccur* OR co occur* OR develop* OR high support OR life limiting OR long standing OR longstanding OR long term OR multi* OR ongoing OR on going OR persistent OR priorit* OR serious* OR severe OR several OR simultaneous OR special*) AND pd(20100101-20210608))
S4	AND (AB, TI(need? OR care OR circumstance* OR condition? OR existence? OR experience? OR initiative? OR intervention? OR issue* OR live? OR mitigat* OR patient? OR person? OR people OR problem* OR realit* OR situation? OR social factor* OR support OR target*) AND pd(20100101-20210608)))) AND la.exact("ENG")

11

12 Database(s): PsycInfo (Ovid)

13 APA PsycInfo 1806 to March Week 5 2021

14 Date of last search: 08 June 2021

15

#	Searches
1	exp social workers/ or exp social services/ or exp social casework/ or case management/ or social security/ or "welfare services (government)"/ or community welfare services/ or government agencies/
2	((social* or case* or outreach or personal or relief or support) adj3 (advisor? or agenc* or assistant? or care* or department* or deliver* or institution* or intervention? or lead* or manager? or organi?ation* or personnel or planning

#	Searches
	or practi* or profession* or program* or provider? or provision or sector* or service? or setting? or staff or supervi* or system* or team* or unit? or work*)),ti,ab.
3	(care coordinator? or care co-ordinator? or case manager* or caseworker* or case-worker* or case worker* or best interest? assessor?).ti,ab.
4	((("approved mental health" adj (professional? or personnel or staff or team* or worker?)) or AMHP).ti,ab.
5	(social welfare or social assistance or local authorit* or local council* or state support or social prescribing or welfare service?).ti,ab.
6	or/1-5
7	comorbidity/
8	((complex* or chang* or chronic or coexist* or co exist* or combin* or concomitant or comorbid* or co-morbid* or cooccur* or co occur* or develop* or high support or (intellectual* and physical*) or life limiting or long standing or longstanding or long term or (mental* and physical*) or multi* or ongoing or on-going or persistent or priorit* or serious* or severe or several or simultaneous or special*) adj4 (need? or care or circumstance* or condition? or existence? or experience? or initiative? or intervention? or issue* or live? or mitigat* or patient? or person? or people or problem* or realit* or situation? or social factor* or support or target*)),ti,ab.
9	SHCN.ti,ab.
10	complex case?.ti,ab.
11	(dual diagnos?s or multi* diagnos?s).ti,ab.
12	(impact adj3 daily adj (life or lives or living or activit* or experienc*).ti,ab.
13	or/7-12
14	exp social issues/
15	"activities of daily living"/ or exp lifestyle/
16	14 and 15
17	employment status/ or employability/ or occupational tenure/ or occupational status/ or job security/ or job search/ or supported employment/ or vocational rehabilitation/ or vocational evaluation/ or work adjustment training/ or sheltered workshops/ or unemployment/ or personnel termination/ or employee layoffs/
18	((chang* or develop* or enhanc* or initiative? or intervention? or program* or address* or improv* or target*) adj3 (employment or unemployment or unemploy*).ti,ab.
19	(support* adj3 (employment? or work or vocational)).ti,ab.
20	(employment* or unemploy* or underemploy* or under employ*).ti.
21	individual placement?.ti,ab.
22	((finding or gaining or obtaining or keeping or sustaining) adj3 (work or job or employment)).ti,ab.
23	(social firms or (sheltered adj (employment or work))).ti,ab.
24	(precar* adj1 (employment or work)).ti,ab.
25	(paid work or paid employment).ti,ab.
26	(voluntary work or volunteering or unpaid work).ti,ab.
27	(meaningful adj (activit* or employment or work)).ti,ab.
28	("return to work" or "back to work" or absenteeism).ti,ab.
29	((alleviat* or ease or manag* or prevent* or reduc* or stop*) adj (work* or disabilit*).ti,ab.
30	((labo?r force or employment or unemployment) adj status).ti,ab.
31	or/17-30
32	family relations/ or intergenerational relations/ or exp marital relations/ or family conflict/ or marital conflict/ or home environment/ or living alone/ or family reunification/ or living arrangements/
33	((family or families or intergenerat* or inter-generat*) adj (relation* or breakdown or conflict?)).ti,ab.
34	((sexual or intimate or partner?) adj (relation* or conflict?)).ti,ab.
35	((develop* or enhanc* or initiative? or intervention? or program* or address* or improv* or promot* or target*) adj2 relationship?).ti,ab.
36	((carer? or partner or relationship?) adj support*).ti,ab.
37	or/32-36
38	housing/ or assisted living/ or group homes/ or shelters/ or homeless/ or homeless mentally ill/ or deinstitutionalization/ or independent living programs/ or living arrangements/ or residential care institutions/ or halfway houses/ or independent living programs/ or living arrangements/ or residential care institutions/ or poverty areas/ or social environments/ or therapeutic social clubs/ or built environment/ or urban planning/
39	housing.ti.
40	((housing or accommodation or neighbo?rhood? or residence*) adj3 (chang* or address* or condition* or develop* or enhanc* or improv* or initiative? or instability or intervention? or mitigat* or program* or stability or target*)),ti,ab.
41	homeless*.ti,ab.
42	(permanent housing or social housing).ti,ab.
43	((assisted or autonomous or independent or secur* or sheltered or support* or sustain*) adj3 (housing or accommodat* or dwelling? or residen* or tenanc* or tenure?)).ti,ab.
44	((halfway or satellite) adj (accommodat* or dwelling? or home? or house?)).ti,ab.
45	(neighbo?rhood? adj (characteristic* or intervention* or program*)),ti,ab.
46	((environment* or housing or neighbo?rhood?) and infrastructure).ti,ab.
47	or/38-46
48	socioeconomic status/ or "income (economic)"/ or budgets/ or economic security/ or financial strain/ or exp employee benefits/ or *disadvantaged/ or *social deprivation/
49	money.ti.
50	((access* or improv* or manag* or supplement*) adj2 (cash or money or financ* or income? or savings)).ti,ab.
51	((financial adj (autonomy or security or insecurity)) or loans or borrowing or budgeting or microcredit or microfinance or social fund*).ti,ab.

#	Searches
52	(extreme poverty or high poverty).ti,ab. or poverty.ti.
53	((address* or escap* or improv* or "out of" or support* or target*) adj2 (depriv* or poor or poverty)).ti,ab.
54	((food or fuel) adj (insecurity or poverty)) or food bank?.ti,ab.
55	((alleviat* or ease or manag* or prevent* or reduc* or stop*) adj2 (debt? or poverty or ((economic or financial) adj hardship?)).ti,ab.
56	((basic or low or minimum) adj3 (wage? or income?)).ti,ab.
57	(family adj (income? or tax credit?)).ti,ab.
58	welfare benefit?.ti,ab.
59	or/48-58
60	exp criminal offenders/ or criminal record/ or prisoners/ or criminal rehabilitation/ or reintegration/
61	((crime? or criminal* or offend* or offence? or recidiv*) adj3 (initiative? or intervention? or program* or mitigat* or address* or diver* or prevent* rehabilitat*)).ti,ab.
62	((inmate? or prisoner? or convict? or felon?) adj3 (rehabilitat* or releas*)).ti,ab.
63	(community adj2 (reentry or re-entry)).ti,ab.
64	or/60-63
65	social isolation/ or loneliness/ or abandonment/ or alienation/ or exp social discrimination/ or stigma/ or health disparities/
66	(community involvement or community network* or loneliness or social* alienat* or social connect* or social inclusion or social* isolat* or social network* or social participation or social stigma*).ti,ab.
67	or/65-66
68	human rights/ or exp civil rights/ or exp freedom/ or government policy making/ or digital divide/ or information literacy/
69	exp minority groups/ or exp "racial and ethnic groups"/ or asylum seeking/ or immigration/ or refugees/ or at risk populations/ or disadvantaged/
70	((civil* or human or legal or social) adj rights) or (social justice or equal protection or social protection)).ti,ab.
71	((social or community or neighbo?hood?) adj3 (equit* or inequit* or inequalit*)).ti,ab.
72	(digital adj (inclusion or exclusion or divide or equit* or inequit* or inequalit*)).ti,ab.
73	((disadvantaged or underserved or under served or vulnerab* or at risk or high risk) adj3 (adult? or famil* or person? or people? or population?)).ti,ab.
74	((minorit* or emigra* or immigra* or migra* or foreigner* or refugee* or transient*) adj3 (adult? or famil* or person? or people? or population?)).ti,ab.
75	or/68-74
76	crime victims/ or elder abuse/ or domestic violence/ or battered females/ or exposure to violence/ or intimate partner violence/ or physical abuse/ or exp sexual abuse/ or shelters/ or interpersonal control/ or coercion/ or slavery/ or human trafficking/ or *freedom/ or exp alcohol abuse/ or exp drug abuse/
77	(crime victim? or revictim* or ((victim* or crime?) and survivor*)).ti,ab.
78	((domestic or marital or partner? or spous* or surviv*) adj3 (abus* or rape? or sex* assault* or violence)).ti,ab.
79	coercive control.ti,ab.
80	((female? or women?) adj (refuge? or shelter?)).ti,ab.
81	(exploitation or safe guarding or safeguarding).ti,ab.
82	((substance or drug or alcohol) adj (abuse or misuse?)) or "substance use" or "illegal drug use*" or addict* or alcoholi* or (problem* adj1 drinking)).tw.
83	or/76-82
84	or/16,31,37,47,59,64,67,75,83
85	exp disabilities/ or exp chronic illness/ or cognitive impairment/ or diminished capacity/ or exp health impairments/ or exp mental disorders/ or exp sensory system disorders/ or special needs/ or exp central nervous system disorders/ or exp sense organ disorders/ or terminally ill patients/
86	(disable? or disabilit* or handicap* or retard* or disorder? or impair* or condition? or illness* or capacity or competen* or incompeten* or difficulty or difficulties or deficit? or dysfunct*).ti.
87	or/85-86
88	exp health care services/ or exp community facilities/ or exp elderly care/ or exp mental health programs/ or social psychiatry/ or exp occupational health/ or exp rehabilitation/
89	((communit* or elder* or mental* or long term or custod* or psychosocial* or palliative or terminal or reab* or rehabilitat*) adj3 (care or agenc* or deliver* or department? or facilit* or institution* or network* or organi?ation* or provider? or provision? or partner* or sector* or service* or setting*)).ti,ab.
90	((allied health professional? or AHP? or clinical or clinician? or consultant? or family doctor? or general practi* or GP? or medical or medic? or nurse? or occupational therapist? or physician? or ((speech or language) adj2 therapist?) or SLT?) adj3 (care or agenc* or deliver* or department? or facilit* or institution* or network* or organi?ation* or provider? or provision? or partner* or sector* or service* or setting*)).ti,ab.
91	or/88-90
92	84 and (87 or 91)
93	6 and 13 and 92
94	exp economics/
95	exp "costs and cost analysis"/
96	cost containment/
97	money/
98	resource allocation/
99	or/94-98
100	budget*.ti,ab.
101	cost*.ti.
102	(economic* or pharmaco?economic*).ti.

#	Searches
103	(price* or pricing*).ti,ab.
104	(cost* adj2 (effective* or utilit* or benefit* or minimi* or unit* or estimat* or variable*)).ab.
105	(financ* or fee or fees).ti,ab.
106	(value adj2 (money or monetary)).ti,ab.
107	or/99-105
108	"quality of life measures"/
109	(quality adjusted or quality adjusted life year*).tw.
110	(qaly* or qal or qald* or qale* or qtime* or qwb* or daly).tw.
111	(illness state* or health state*).tw.
112	(hui or hui2 or hui3).tw.
113	(multiattribute* or multi attribute*).tw.
114	(utilit* adj3 (score*1 or valu* or health* or cost* or measur* or disease* or mean or gain or gains or index*)).tw.
115	utilities.tw.
116	(eq-5d* or eq5d* or eq-5* or eq5* or euroqual* or euro qual* or euroqual 5d* or euro qual 5d* or euro qol* or euroqol* or euro quol* or euroquol* or euro quol5d* or euroquol5d* or eur qol* or eurqol* or eur qol5d* or eurqol5d* or eur?qul* or eur?qul5d* or euro* quality of life or european qol).tw.
117	(euro* adj3 (5 d* or 5d* or 5 dimension* or 5dimension* or 5 domain* or 5domain*)).tw.
118	(sf36 or sf 36 or sf thirty six or sf thirtysix).tw.
119	(time trade off*1 or time tradeoff*1 or tto or timetradeoff*1).tw.
120	exp "quality of life"/ and ((quality of life or qol) adj (score*1 or measure*1)).tw.
121	exp "quality of life"/ and (health adj3 status).tw.
122	(quality of life or qol).tw. and "costs and cost analysis"/ use psyh
123	((qol or hrqol or quality of life).tw. or *quality of life/) and ((qol or hrqol* or quality of life) adj2 (increas* or decreas* or improv* or declin* or reduc* or high* or low* or effect or effects or worse or score or scores or change*1 or impact*1 or impacted or deteriorat*)).ab.
124	"costs and cost analysis"/ use psyh and cost-effectiveness ratio*.tw. and (cost-effectiveness ratio* and (perspective* or life expectanc*)).tw.
125	exp "quality of life"/ and (quality of life or qol).ti.
126	exp "quality of life"/ and ((quality of life or qol) adj3 (improv* or chang*)).tw.
127	exp "quality of life"/ and health-related quality of life.tw.
128	((capabilit* or wellbeing or well-being) adj4 (measur* or index* or instrument* or tool*)).tw.
129	(subjective wellbeing or subjective well-being).tw.
130	(ASCOT or "adult social care outcomes toolkit").tw.
131	(SCRQOL or "social care- related quality of life").tw.
132	capacity to benefit score.tw.
133	(ICECAP* or "Icepap capability measure for adults" or "Icepap capability measure for older people" or "Icepap supportive care measure" or "Icepap close person measure").tw.
134	(ASCOF or "adult social care outcomes framework").tw.
135	(Warwick Edinburgh Mental Well-being scale or WEMBS or S-WEMWBS).tw.
136	ONS-4.tw.
137	GHQ-12.tw.
138	(Personal Well-Being Index* or PWI-A).tw.
139	(OPUS* or "older people's utility scale").tw.
140	or/108-139
141	107 or 140
142	93 and 141
143	limit 142 to english language
144	limit 143 to yr="2010 -Current"

1

2 Database(s): SOCIAL CARE ONLINE

3 Social Care Online: <https://www.scie-socialcareonline.org.uk/>

4 Date of last search: 08 June 2021

5

Search
AllFields:'social work* or social care* or care coordinator* or care co-ordinator*'
- OR AllFields:'case manager* or caseworker* or case-worker* or case worker* or best interest* assessor*'
- OR AllFields:'approved mental health professional* or AMHP'
- OR AllFields:'social welfare or social assistance or local authorit* or local council* or state support or social prescribing or welfare service*'
AND
HE search:
AND AllFields:'budget* or cost* or economic* or fee or fees or financ* or money or monetary or pharmacoeconomic* or price* or pricing'

Search
OR
HUV search:
eq-5d* or eq5d* or eq-5* or eq5* or euroqual* or euro qual* or euroqual 5d* or euro qual 5d* or euro qol* or euroqol* or euro quol* or euroquol* or euro quol5d* or euroquol5d* or eur qol* or eurqol* or eur qol5d* or eurqol5d* or eurqul* or eurqul5d* or euro* quality of life or european qol
OR
sf36 or sf 36 or sf thirty six or sf thirtysix
OR
time trade off* or time tradeoff* or tto or timetradeoff*
OR
subjective wellbeing or subjective well-being
OR
ASCOT or adult social care outcomes toolkit
OR
SCRQOL or social care- related quality of life
capacity to benefit score
OR
ICECAP* or Icepap capability measure for adults or Icepap capability measure for older people or Icecap supportive care measure or Icecap close person measure
ASCOF or adult social care outcomes framework
OR
Warwick Edinburgh Mental Well-being scale or WEMBS or S-WEMWBS
OR
ONS-4 or GHQ-12 or Personal Well-Being Index* or PWI-A or OPUS* or older people's utility scale

1

2 Database(s): Social Policy and Practice (Ovid)

3 Social Policy and Practice 202104 [OVID].

4 Date of last search: 08 June 2021

5

#	Searches
1	((social* or case* or outreach or personal or relief or support) adj3 (advisor? or agenc* or assistant? or care* or department* or deliver* or institution* or intervention? or lead* or manager? or organi?ation* or personnel or planning or practi* or profession* or program* or provider? or provision or sector* or service? or setting? or staff or supervi* or system* or team* or unit? or work*)).ti,ab.
2	(care coordinator? or care co-ordinator? or case manager* or caseworker* or case-worker* or case worker* or best interest? assessor?).ti,ab.
3	((("approved mental health" adj (professional? or personnel or staff or team* or worker?)) or AMHP).ti,ab.
4	(social welfare or social assistance or local authorit* or local council* or state support or social prescribing or welfare service?).ti,ab.
5	or/1-4
6	((complex* or chang* or chronic or coexist* or co exist* or combin* or concomitant or comorbid* or co-morbid* or cooccur* or co occur* or develop* or high support or (intellectual* and physical*) or life limiting or long standing or longstanding or long term or (mental* and physical*) or multi* or ongoing or on-going or persistent or priorit* or serious* or severe or several or simultaneous or special*) adj4 (need? or care or circumstance* or condition? or existence? or experience? or initiative? or intervention? or issue* or live? or mitigat* or patient? or person? or people or problem* or realit* or situation? or social factor* or support or target*).ti,ab.
7	SHCN.ti,ab.
8	complex case?.ti,ab.
9	(dual diagnos?s or multi* diagnos?s).ti,ab.
10	(impact adj3 daily adj (life or lives or living or activit* or experienc*).ti,ab.
11	or/6-10
12	((chang* or develop* or enhanc* or initiative? or intervention? or program* or address* or improv* or target*) adj3 (employment or unemployment or unemploy*).ti,ab.
13	(support* adj3 (employment? or work or vocational)).ti,ab.
14	(employment or unemploy* or underemploy* or under employ*).ti.
15	individual placement?.ti,ab.
16	((finding or gaining or obtaining or keeping or sustaining) adj3 (work or job or employment)).ti,ab.
17	(social firms or (sheltered adj (employment or work))).ti,ab.
18	(precar* adj1 (employment or work)).ti,ab.
19	(paid work or paid employment).ti,ab.
20	(voluntary work or volunteering).ti,ab.
21	(meaningful adj (activit* or employment or work)).ti,ab.
22	("return to work" or "back to work" or absenteeism).ti,ab.
23	((alleviat* or ease or manag* or prevent* or reduc* or stop*) adj (work* or disabilit*).ti,ab.

#	Searches
24	((labo?r force or employment or unemployment) adj status).ti,ab.
25	or/12-24
26	((family or families or intergenerat* or inter-generat*) adj (relation* or breakdown or conflict?)).ti,ab.
27	((sexual or intimate or partner?) adj (relation* or conflict?)).ti,ab.
28	((develop* or enhanc* or initiative? or intervention? or program* or address* or improv* or promot* or target*) adj2 relationship?).ti,ab.
29	((carer? or partner or relationship?) adj support*).ti,ab.
30	or/26-29
31	housing.ti.
32	((housing or accommodation or neighb?rhood? or residence*) adj3 (chang* or address* or condition* or develop* or enhanc* or improv* or initiative? or instability or intervention? or mitigat* or program* or stability or target?)).ti,ab.
33	homeless*.ti,ab.
34	(permanent housing or social housing).ti,ab.
35	((assisted or autonomous or independent or secur* or sheltered or support* or sustain*) adj3 (housing or accommodat* or dwelling? or residen* or tenanc* or tenure?)).ti,ab.
36	((halfway or satellite) adj (accommodat* or dwelling? or home? or house?)).ti,ab.
37	(neighbo?rhood? adj (characteristic* or intervention* or program*)).ti,ab.
38	((environment* or housing or neighb?rhood?) and infrastructure).ti,ab.
39	or/31-38
40	money.ti.
41	((access* or improv* or manag* or supplement*) adj2 (cash or money or financ* or income? or savings)).ti,ab.
42	((financial adj (autonomy or security or insecurity)) or loans or borrowing or budgeting or microcredit or microfinance or social fund*).ti,ab.
43	(extreme poverty or high poverty).ti,ab. or poverty.ti.
44	((address* or escap* or improv* or "out of" or support* or target*) adj2 (depriv* or poor or poverty)).ti,ab.
45	((food or fuel) adj (insecurity or poverty)) or food bank?).ti,ab.
46	((alleviat* or ease or manag* or prevent* or reduc* or stop*) adj2 (debt? or poverty or ((economic or financial) adj hardship?)).ti,ab.
47	((basic or low or minimum) adj3 (wage? or income?)).ti,ab.
48	(family adj (income? or tax credit?)).ti,ab.
49	welfare benefit?.ti,ab.
50	or/40-49
51	((crime? or criminal* or offend* or offence? or recidiv*) adj3 (initiative? or intervention? or program* or mitigat* or address* or diver* or prevent* rehabilitat*).ti,ab.
52	((inmate? or prisoner? or convict? or felon?) adj3 (rehabilitat* or releas*).ti,ab.
53	(community adj2 (reentry or re-entry)).ti,ab.
54	or/51-53
55	(community involvement or community network* or loneliness or social* alienat* or social connect* or social inclusion or social* isolat* or social network* or social participation or social stigma*).ti,ab.
56	((civil* or human or legal or social) adj rights) or (social justice or equal protection or social protection)).ti,ab.
57	((social or community or neighb?rhood?) adj3 (equit* or inequit* or inequalit*)).ti,ab.
58	(digital adj (inclusion or exclusion or divide or equit* or inequit* or inequalit*)).ti,ab.
59	((disadvantaged or underserved or under served or vulnerab* or at risk or high risk) adj3 (adult? or famil* or person? or people? or population?)).ti,ab.
60	((minorit* or emigra* or immigra* or migra* or foreigner* or refugee* or transient*) adj3 (adult? or famil* or person? or people? or population?)).ti,ab.
61	or/56-60
62	(crime victim? or revictim* or ((victim* or crime?) and survivor*).ti,ab.
63	((domestic or marital or partner? or spous* or surviv*) adj3 (abus* or rape? or sex* assault* or violence)).ti,ab.
64	coercive control.ti,ab.
65	((female? or women?) adj (refuge? or shelter?)).ti,ab.
66	(exploitation or safe guarding or safeguarding).ti,ab.
67	((substance or drug or alcohol) adj (abuse or misuse?)) or "substance use" or "illegal drug use*" or addict* or alcoholi* or (problem* adj1 drinking)).ti,ab.
68	or/62-67
69	or/25,30,39,50,54-55,61,68
70	(disable? or disabilit* or handicap* or retard* or disorder? or impair* or condition? or illness* or capacity or competen* or difficulty or difficulties or deficit? or dysfunct*).ti.
71	((communit* or elder* or mental* or long term or custod* or psychosocial* or palliative or terminal or reable* or rehabilitat*) adj3 (care or agenc* or deliver* or department? or facilit* or institution* or network* or organi?ation* or provider? or provision? or partner* or sector* or service* or setting*)).ti,ab.
72	((allied health professional? or AHP? or clinical or clinician? or consultant? or family doctor? or general practi* or GP? or medical or medic? or nurse? or occupational therapist? or physician? or ((speech or language) adj2 therapist?) or SLT?) adj3 (care or agenc* or deliver* or department? or facilit* or institution* or network* or organi?ation* or provider? or provision? or partner* or sector* or service* or setting*)).ti,ab.
73	71 or 72
74	5 and 11 and 69 and (70 or 73)
75	budget*.ti,ab.
76	cost*.ti.
77	(economic* or pharmaco?economic*).ti.

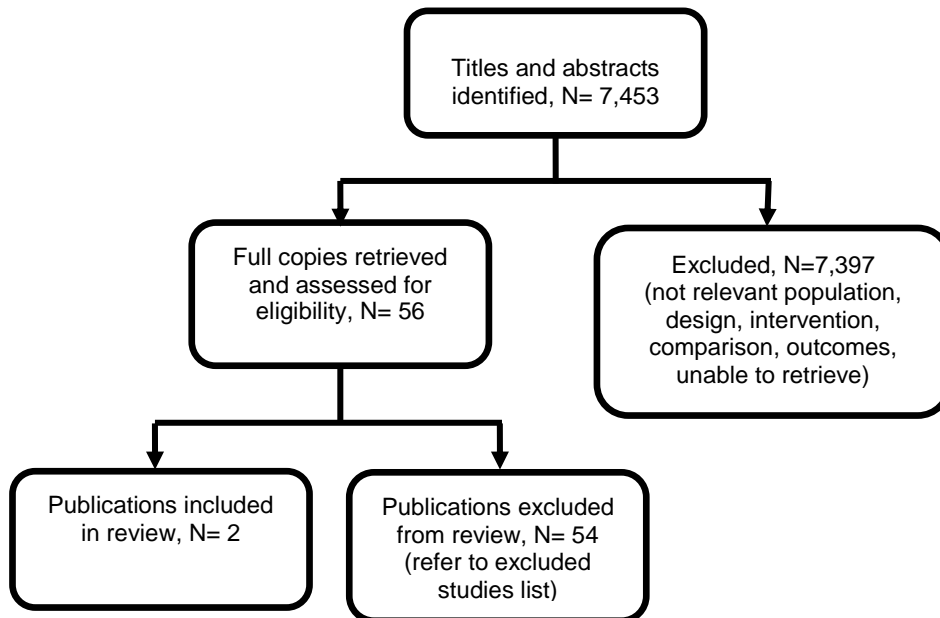
#	Searches
78	(price* or pricing*).ti,ab.
79	(cost* adj2 (effective* or utilit* or benefit* or minimi* or unit* or estimat* or variable*)).ab.
80	(financ* or fee or fees).ti,ab.
81	(value adj2 (money or monetary)).ti,ab.
82	or/75-81
83	(quality adjusted or quality adjusted life year*).tw.
84	(qaly* or qal or qald* or qale* or qtime* or qwb* or daly).tw.
85	(illness state* or health state*).tw.
86	(hui or hui2 or hui3).tw.
87	(multiattribute* or multi attribute*).tw.
88	(utilit* adj3 (score*1 or valu* or health* or cost* or measur* or disease* or mean or gain or gains or index*)).tw.
89	utilities.tw.
90	(eq-5d* or eq5d* or eq-5* or eq5* or euroqual* or euro qual* or euroqual 5d* or euro qual 5d* or euro qol* or euroqol* or euro quol* or euroquol* or euro quol5d* or euroquol5d* or eur qol* or eurqol* or eur qol5d* or eurqol5d* or eur?qul* or eur?qul5d* or euro* quality of life or european qol).tw.
91	(euro* adj3 (5 d* or 5d* or 5 dimension* or 5dimension* or 5 domain* or 5domain*)).tw.
92	(sf36 or sf 36 or sf thirty six or sf thirtysix).tw.
93	(time trade off*1 or time tradeoff*1 or tto or timetradeoff*1).tw.
94	((quality of life or qol) adj (score*1 or measure*1)).tw.
95	((quality of life or qol) and (health adj3 status)).tw.
96	((qol or hrqol or quality of life) and (qol or hrqol* or quality of life)).tw. adj2 (increas* or decreas* or improv* or declin* or reduc* or high* or low* or effect or effects or worse or score or scores or change*1 or impact*1 or impacted or deteriorat*).ab.
97	(cost-effectiveness ratio* and (perspective* or life expectanc*)).tw.
98	((quality of life or qol) adj3 (improv* or chang*)).tw.
99	health-related quality of life.tw.
100	((capabilit* or wellbeing or well-being) adj4 (measur* or index* or instrument* or tool*)).tw.
101	(subjective wellbeing or subjective well-being).tw.
102	(ASCOT or "adult social care outcomes toolkit").tw.
103	(SCRQOL or "social care- related quality of life").tw.
104	"capacity to benefit score".tw.
105	(ICECAP* or "Icepap capability measure for adults" or "Icepap capability measure for older people" or "Icepap supportive care measure" or "Icepap close person measure").tw.
106	(ASCOF or "adult social care outcomes framework").tw.
107	(Warwick Edinburgh Mental Well-being scale or WEMBS or S-WEMWBS).tw.
108	ONS-4.tw.
109	GHQ-12.tw.
110	(Personal Well-Being Index* or PWI-A).tw.
111	(OPUS* or "older people's utility scale").tw.
112	or/83-111
113	82 or 112
114	74 and 113
115	limit 114 to yr="2010 -Current"

1

1 Economic evidence study selection

Health economics global search

3 **Figure 1: Flow diagram of economic article selection for global health economic**
4 **search**



5

6 **Table 1: Number of economic studies identified by review topic**

Review topic	Number of economic studies included in the review
<i>Topic G: What is the effectiveness of social and community support approaches (including peer support) in promoting social inclusion of adults with complex needs?</i>	2

1 Excluded studies

Excluded studies following full text review

Author and Year	Title and Journal	Reason for exclusion
Albrecht 2016	Many diseases, one model of care? Journal of comorbidity	Not relevant to any review question
Banerjee 2009	Clinical and cost effectiveness of services for early diagnosis and intervention in dementia International journal of geriatric psychiatry	Not relevant to any review question
Barequet 2019	Health policy regulations pertaining to advanced surgical devices- their socio-economic effects on ophthalmology practice Israel journal of health policy research	Not relevant to any review question
Barnett 1999	The cost-effectiveness of substance abuse treatment Current psychiatry reports	Not relevant to any review question
Barrett 2006	Cost-effectiveness of screening and referral to an alcohol health worker in alcohol misusing patients attending an accident and emergency department: a decision-making approach Drug and alcohol dependence	Not relevant to any review question
Barrett 2013	Randomised controlled trial of joint crisis plans to reduce compulsory treatment for people with psychosis: economic outcomes PloS one	Not relevant to any review question
Bonstedt 1979	Providing cost-effective psychotherapy in a Health Maintenance Organization Hospital & community psychiatry	Not relevant to any review question
Brouwers 2007	Cost-effectiveness of an activating intervention by social workers for patients with minor mental disorders on sick leave: a randomized controlled trial European journal of public health	Not relevant to any review question
Byford 2013	Cost-effectiveness of injectable opioid treatment v. oral methadone for chronic heroin addiction The British journal of psychiatry : the journal of mental science	Not relevant to any review question
Camacho 2017	Cost-effectiveness of structured group psychoeducation versus unstructured group support for bipolar disorder: results from a multi-centre pragmatic randomised controlled trial Journal of affective disorders	Not relevant to any review question
Creswell 2015	Treatment of childhood anxiety disorder in the context of maternal anxiety disorder: a randomised controlled trial and economic analysis Health technology assessment (Winchester, England)	Not relevant to any review question
D'Amico 2016	Cost-effectiveness of exercise as a therapy for behavioural and psychological symptoms of dementia within the EVIDEM-E randomised controlled trial International journal of geriatric psychiatry	Not relevant to any review question
Dewan 1999	Are psychiatrists cost-effective? An analysis of integrated versus split treatment The American journal of psychiatry	Not relevant to any review question

Dixon 2015	Exploring the cost-effectiveness of a one-off screen for dementia (for people aged 75 years in England and Wales) International journal of geriatric psychiatry	Not relevant to any review question
Fahs 1996	An economic analysis of two models of hospital care for AIDS patients: implications for hospital discharge planning Social work in health care	Not relevant to any review question
Fairhall 2015	Economic evaluation of a multifactorial, interdisciplinary intervention versus usual care to reduce frailty in frail older people Journal of the American Medical Directors Association	Not relevant to any review question
Grimes 2011	Pursuing cost-effectiveness in mental health service delivery for youth with complex needs The journal of mental health policy and economics	Not relevant to any review question
Hayhurst 2015	The effectiveness and cost-effectiveness of diversion and aftercare programmes for offenders using class A drugs: a systematic review and economic evaluation Health technology assessment (Winchester, England)	Not relevant to any review question
Henderson 2013	Cost effectiveness of telehealth for patients with long term conditions (Whole Systems Demonstrator telehealth questionnaire study): nested economic evaluation in a pragmatic, cluster randomised controlled trial BMJ (Clinical research ed.)	Not relevant to any review question
Henke 1997	The economic impact of the tacrine in the treatment of Alzheimer's disease Clinical therapeutics	Not relevant to any review question
Heslin 2017	Randomised controlled trial to improve health and reduce substance use in established psychosis (IMPACT): cost-effectiveness of integrated psychosocial health promotion BMC psychiatry	Not relevant to any review question
Hilton 2003	Services integration and cost-effectiveness Alcoholism, clinical and experimental research	Not relevant to any review question
Hollinghurst 2014	Cost-effectiveness of cognitive-behavioural therapy as an adjunct to pharmacotherapy for treatment-resistant depression in primary care: economic evaluation of the CoBaIT Trial The British journal of psychiatry : the journal of mental science	Not relevant to any review question
Jones 2004	Cost effectiveness of memantine in Alzheimer's disease: an analysis based on a probabilistic Markov model from a UK perspective Drugs & aging	Not relevant to any review question
Khan 2019	Does Structured Exercise Improve Cognitive Impairment in People with Mild to Moderate Dementia? A Cost-Effectiveness Analysis from a Confirmatory Randomised Controlled Trial: The Dementia and Physical Activity (DAPA) Trial PharmacoEconomics - open	Not relevant to any review question
Kinchin 2018	Efficacy and cost-effectiveness of a community-based model of care for older patients with complex needs: a study protocol for a multicentre randomised controlled trial using a stepped wedge cluster design Trials	Not relevant to any review question
King 2011	Cost-effectiveness analysis of aripiprazole vs standard-of-care in the management of community-treated patients with schizophrenia: STAR study Current medical research and opinion	Not relevant to any review question

Knapp 2013	Cost effectiveness of a manual based coping strategy programme in promoting the mental health of family carers of people with dementia (the START (STrAtegies for RelaTives) study): a pragmatic randomised controlled trial BMJ (Clinical research ed.)	Not relevant to any review question
Lovell 2017	Clinical effectiveness, cost-effectiveness and acceptability of low-intensity interventions in the management of obsessive-compulsive disorder: the Obsessive-Compulsive Treatment Efficacy randomised controlled Trial (OCTET) Health technology assessment (Winchester, England)	Not relevant to any review question
Maljanen 2016	The cost-effectiveness of short-term and long-term psychotherapy in the treatment of depressive and anxiety disorders during a 5-year follow-up Journal of affective disorders	Not relevant to any review question
McMurrin 2016	Psychoeducation with problem-solving (PEPS) therapy for adults with personality disorder: a pragmatic randomised controlled trial to determine the clinical effectiveness and cost-effectiveness of a manualised intervention to improve social functioning Health technology assessment (Winchester, England)	Not relevant to any review question
Melin 1993	The cost-effectiveness of rehabilitation in the home: a study of Swedish elderly American journal of public health	Not relevant to any review question
Muntz 2004	Economic evaluation of treatments for children with severe behavioural problems The journal of mental health policy and economics	Not relevant to any review question
Nagy 2011	Assessing the cost-effectiveness of the rivastigmine transdermal patch for Alzheimer's disease in the UK using MMSE- and ADL-based models International journal of geriatric psychiatry	Not relevant to any review question
Patel 2010	Cognitive remediation therapy in schizophrenia: cost-effectiveness analysis Schizophrenia research	Not relevant to any review question
Petrou 2006	Cost-effectiveness of a preventive counseling and support package for postnatal depression International journal of technology assessment in health care	Not relevant to any review question
Peveler 2005	A randomised controlled trial to compare the cost-effectiveness of tricyclic antidepressants, selective serotonin reuptake inhibitors and lofepramine Health technology assessment (Winchester, England)	Not relevant to any review question
Rasmussen 1999	Reducing the harms of drug policy: an economic perspective Substance use & misuse	Not relevant to any review question
Richards 2016	Clinical effectiveness and cost-effectiveness of collaborative care for depression in UK primary care (CADET): a cluster randomised controlled trial Health technology assessment (Winchester, England)	Not relevant to any review question
Rubio-Valera 2015	Cost-effectiveness of active monitoring versus antidepressants for major depression in primary health care: a 12-month non-randomized controlled trial (INFAP study) BMC psychiatry	Not relevant to any review question
Shah 2001	Is a dedicated specialist social worker working exclusively with psychogeriatric inpatients and an associated dedicated domiciliary care package cost-effective? International psychogeriatrics	Not relevant to any review question

Shearer 2018	Cost-effectiveness of cognitive therapy as an early intervention for post-traumatic stress disorder in children and adolescents: a trial based evaluation and model Journal of child psychology and psychiatry, and allied disciplines	Not relevant to any review question
Skoldunger 2013	Mortality and treatment costs have a great impact on the cost-effectiveness of disease modifying treatment in Alzheimer's disease--a simulation study Current Alzheimer research	Not relevant to any review question
Sopina 2017	Cost-effectiveness of a randomised trial of physical activity in Alzheimer's disease: a secondary analysis exploring patient and proxy-reported health-related quality of life measures in Denmark BMJ open	Not relevant to any review question
Tanajewski 2015	Economic Evaluation of a General Hospital Unit for Older People with Delirium and Dementia (TEAM Randomised Controlled Trial) PloS one	Not relevant to any review question
Tempest 2015	Cost-effectiveness Analysis of Aripiprazole Once-Monthly for the Treatment of Schizophrenia in the UK The journal of mental health policy and economics	Not relevant to any review question
Thomas 2014	Effectiveness and cost-effectiveness of a telehealth intervention to support the management of long-term conditions: study protocol for two linked randomized controlled trials Trials	Not relevant to any review question
Tong 2017	Cost effectiveness of using cognitive screening tests for detecting dementia and mild cognitive impairment in primary care International journal of geriatric psychiatry	Not relevant to any review question
Tsai 2005	A comparison of the cost-effectiveness of hospital-based home care with that of a conventional outpatient follow-up for patients with mental illness The journal of nursing research : JNR	Not relevant to any review question
van der Zweerde 2016	Cost-effectiveness of i-Sleep, a guided online CBT intervention, for patients with insomnia in general practice: protocol of a pragmatic randomized controlled trial BMC psychiatry	Not relevant to any review question
Wansink 2016	Cost-effectiveness of preventive case management for parents with a mental illness: a randomized controlled trial from three economic perspectives BMC health services research	Not relevant to any review question
Wiles 2016	Long-term effectiveness and cost-effectiveness of cognitive behavioural therapy as an adjunct to pharmacotherapy for treatment-resistant depression in primary care: follow-up of the CoBalT randomised controlled trial The lancet. Psychiatry	Not relevant to any review question
Wistow 2016	Circles of Support and personalization: Exploring the economic case Journal of intellectual disabilities : JOID	Not relevant to any review question
Wodarski 2014	The integrated behavioral health service delivery system model Social work in public health	Not relevant to any review question

1

2