

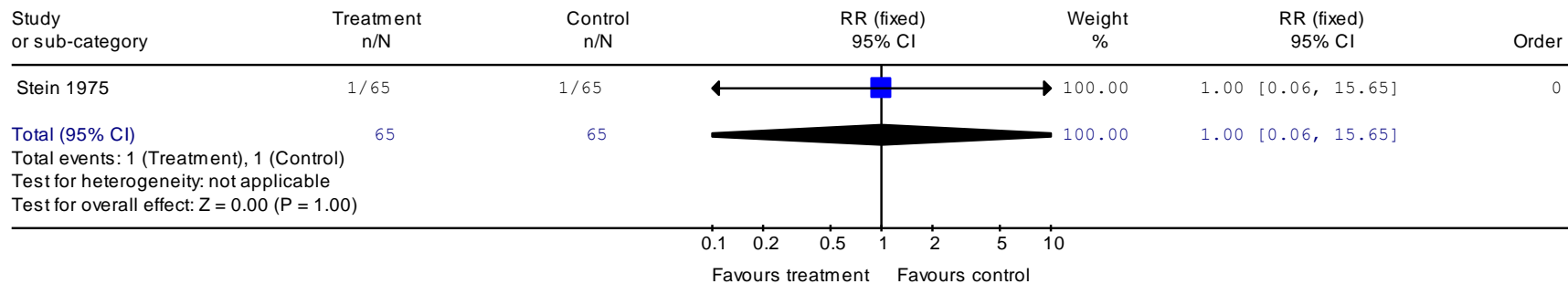
## Appendix 19a: Clinical evidence forest plots for service delivery

### Contents

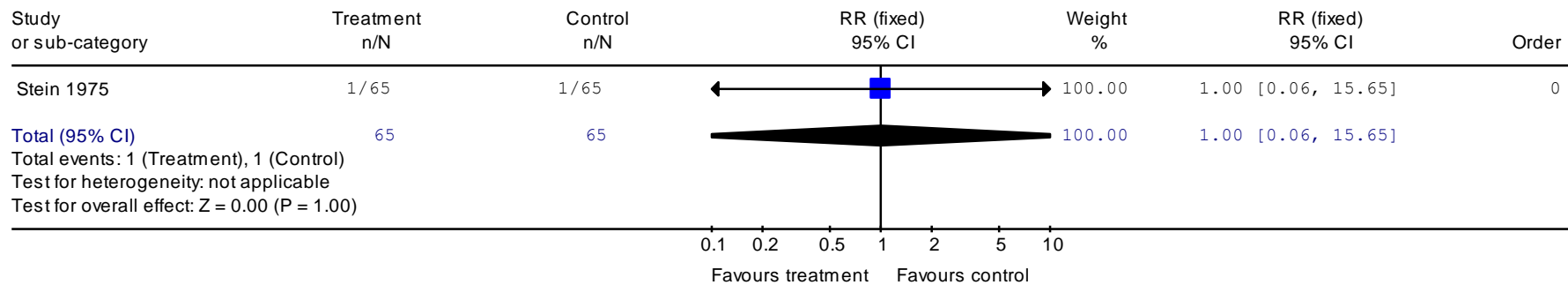
Crisis resolution and home treatment teams (CRHTTs) .....	2
Day hospitals .....	7
Non-statutory support .....	14
Collaborative care .....	15
Collaborative care (C-care) 01: Efficacy - pre-sensitivity analysis .....	15
Collaborative care (C-care) 02: Acceptability and tolerability - pre-sensitivity analysis.....	22
Collaborative care (C-care) 03: Efficacy - sensitivity analysis.....	24
Collaborative care (C-care) 04: Acceptability and tolerability - sensitivity analysis .....	29
Medication management .....	31
Medication management (Med-man) 01: Efficacy .....	31
Medication management (Med-man) 02: Acceptability and tolerability .....	33
Attached professional.....	34
Attached professional 01: Efficacy.....	34

## Crisis resolution and home treatment teams (CRHTTs)

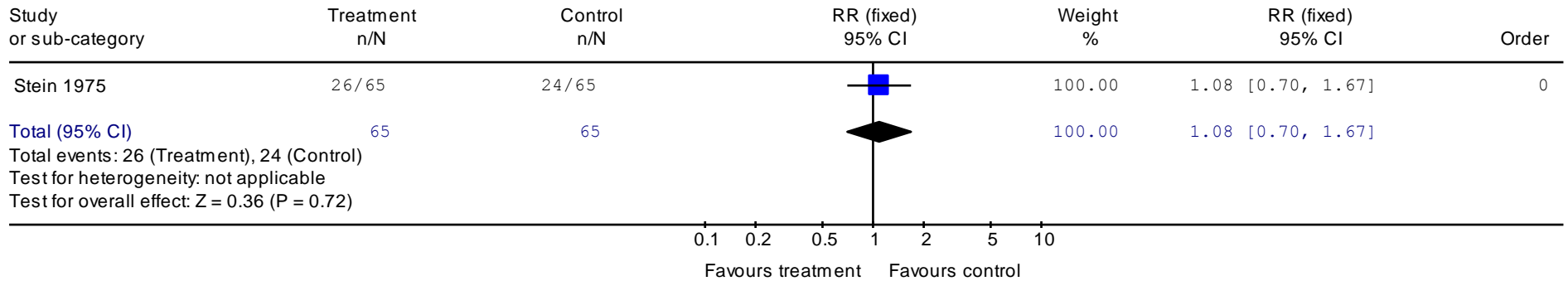
Review: Service: Crisis resolution and home treatment teams (CRHTTs)  
 Comparison: 01 CRHTTs versus standard care  
 Outcome: 01 Death (any cause)



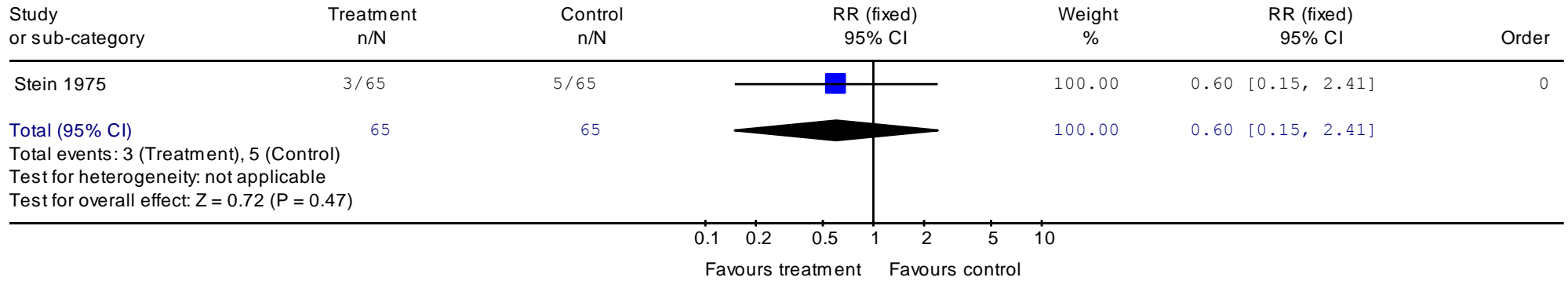
Review: Service: Crisis resolution and home treatment teams (CRHTTs)  
 Comparison: 01 CRHTTs versus standard care  
 Outcome: 02 Death (suicide or death in suspicious circumstances)



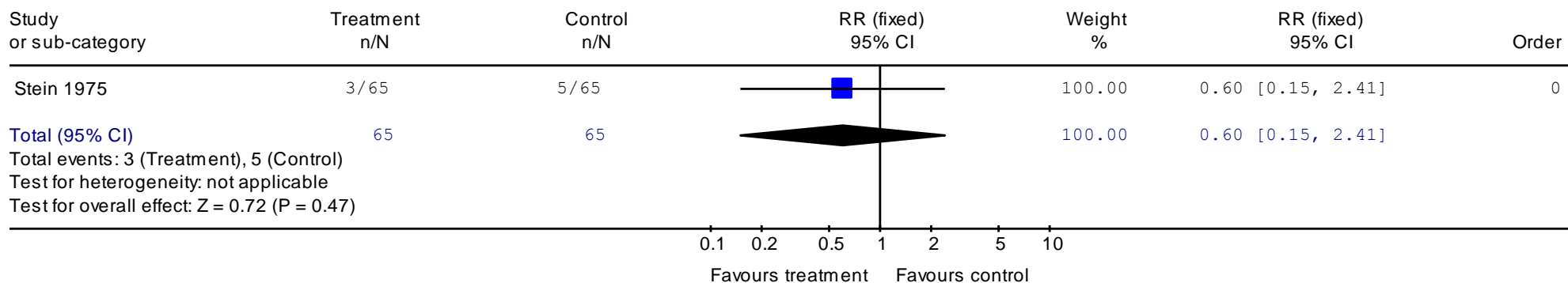
Review: Service: Crisis resolution and home treatment teams (CRHTTs)  
 Comparison: 01 CRHTTs versus standard care  
 Outcome: 03 Attempted suicide



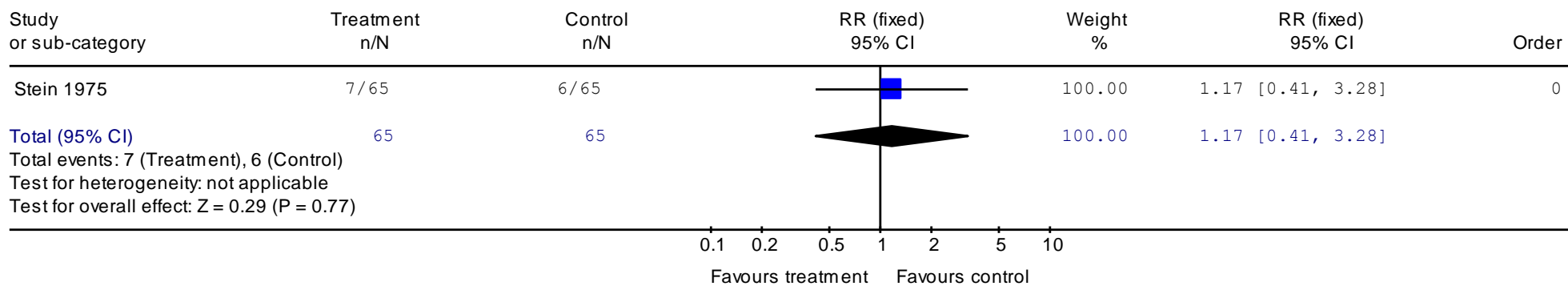
Review: Service: Crisis resolution and home treatment teams (CRHTTs)  
 Comparison: 01 CRHTTs versus standard care  
 Outcome: 04 Leaving the study early by 6 months



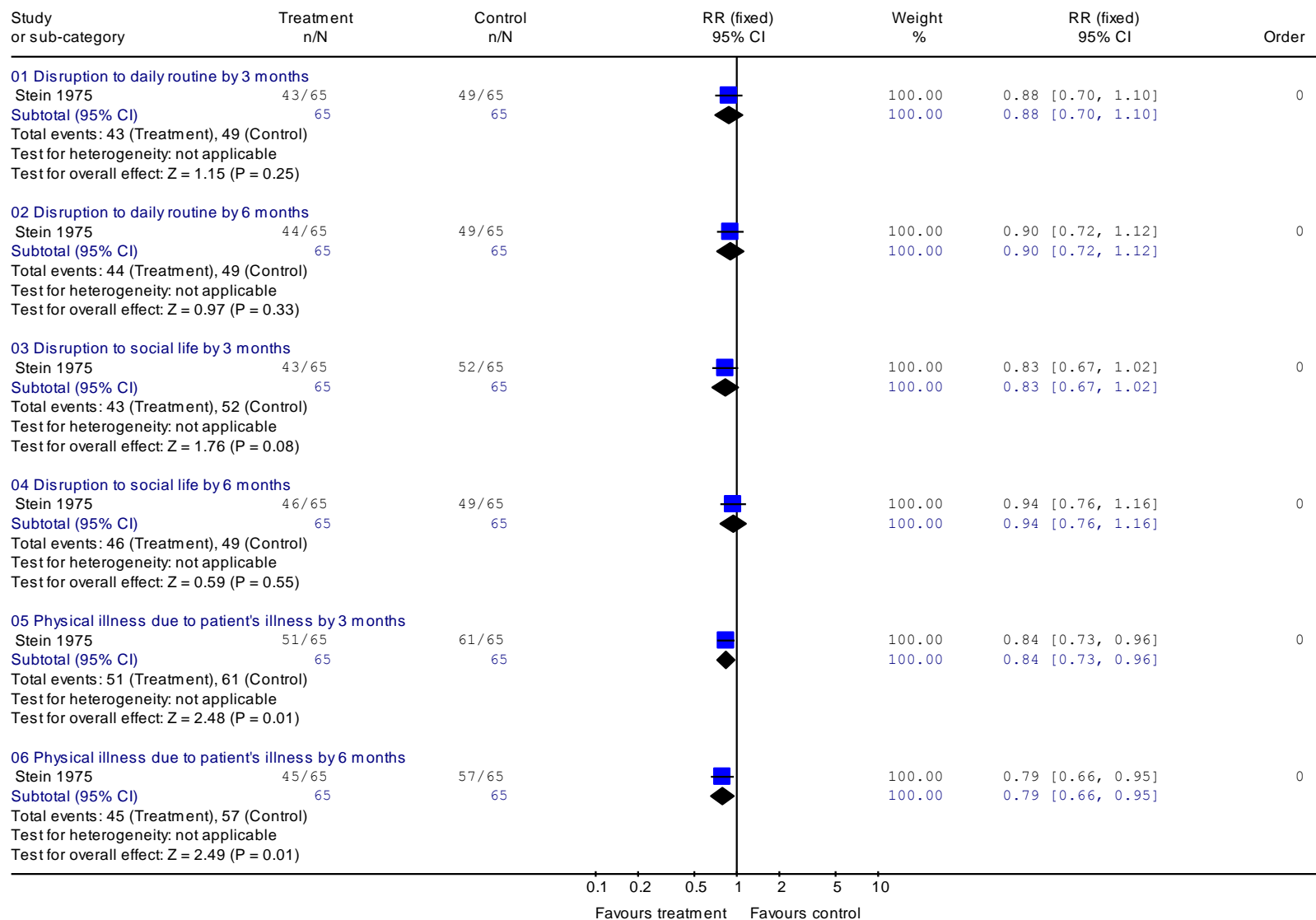
Review: Service: Crisis resolution and home treatment teams (CRHTTs)  
 Comparison: 01 CRHTTs versus standard care  
 Outcome: 05 Leaving the study early by 12 months



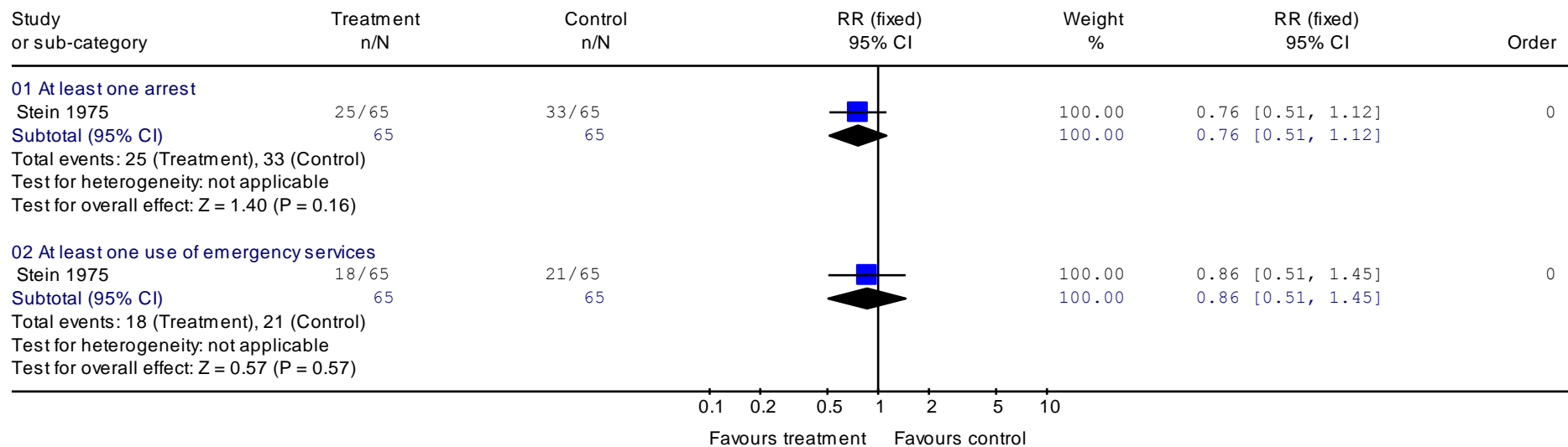
Review: Service: Crisis resolution and home treatment teams (CRHTTs)  
 Comparison: 01 CRHTTs versus standard care  
 Outcome: 06 Leaving the study early by 20 months



Review: Service: Crisis resolution and home treatment teams (CRHTTs)  
 Comparison: 01 CRHTTs versus standard care  
 Outcome: 07 Burden to family

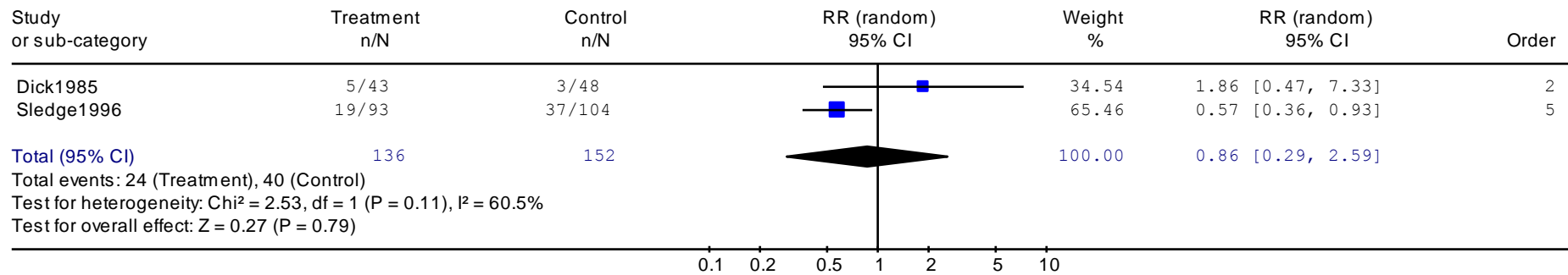


Review: Service: Crisis resolution and home treatment teams (CRHTTs)  
 Comparison: 01 CRHTTs versus standard care  
 Outcome: 08 Burden to community

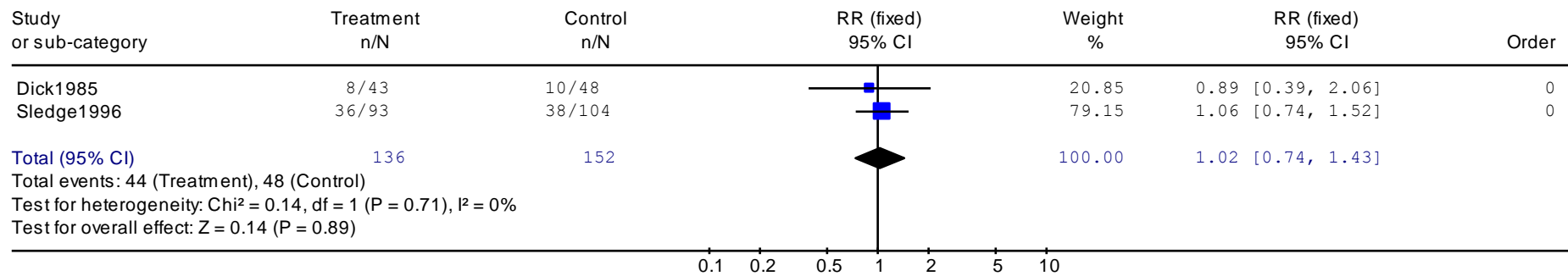


## Day hospitals

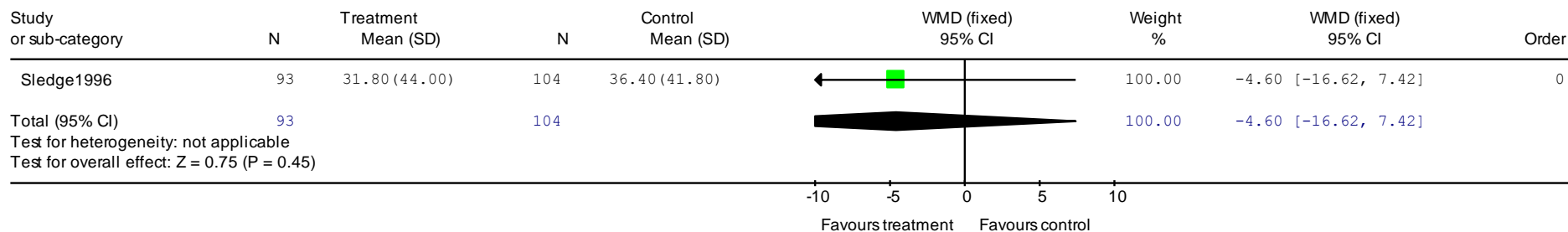
Review: Service: Day hospitals  
 Comparison: 01 Day hospital vs Inpatient care Type 1 trials (unsuitable patients excluded before randomisation)  
 Outcome: 01 Leaving the study early for any reason



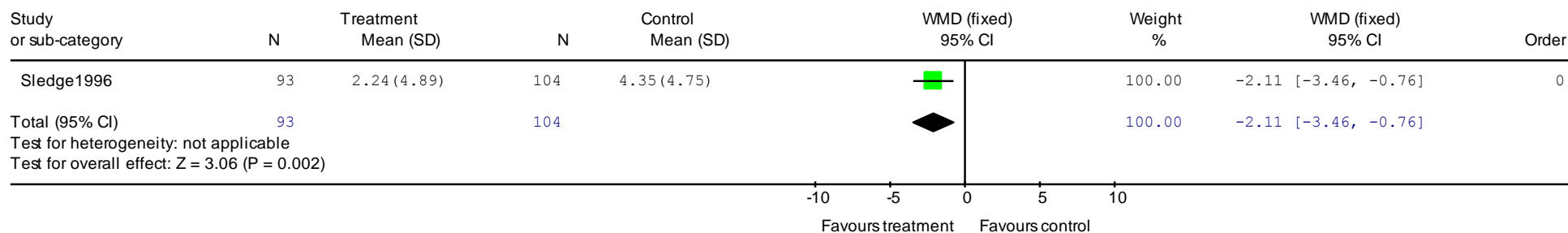
Review: Service: Day hospitals  
 Comparison: 01 Day hospital vs Inpatient care Type 1 trials (unsuitable patients excluded before randomisation)  
 Outcome: 03 Readmitted to IP or DP care after discharge from IP or DP care.



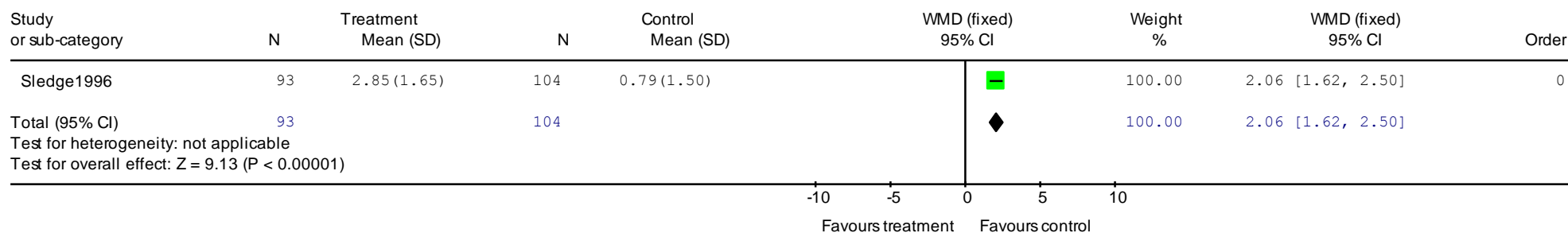
Review: Service: Day hospitals  
 Comparison: 01 Day hospital vs Inpatient care Type 1 trials (unsuitable patients excluded before randomisation)  
 Outcome: 06 Duration of index admission (individual patient data)



Review: Service: Day hospitals  
 Comparison: 01 Day hospital vs Inpatient care Type 1 trials (unsuitable patients excluded before randomisation)  
 Outcome: 07 Inpatient Days/month (individual patient data)

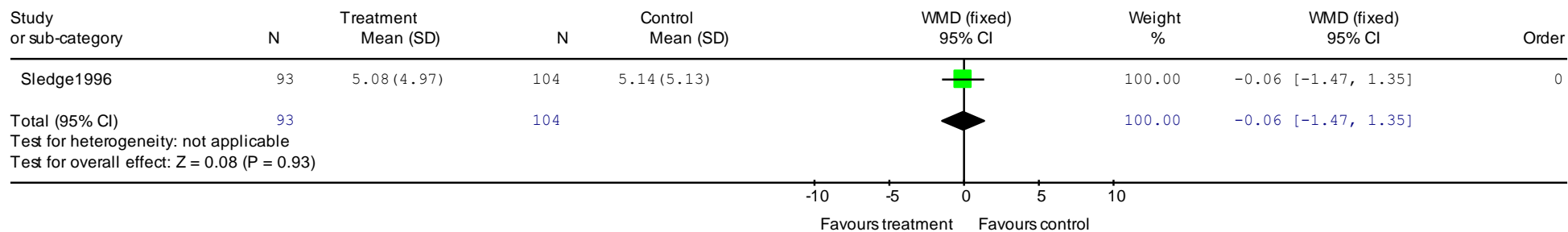


Review: Service: Day hospitals  
 Comparison: 01 Day hospital vs Inpatient care Type 1 trials (unsuitable patients excluded before randomisation)  
 Outcome: 08 Day patient adjusted days/month (individual patient data)

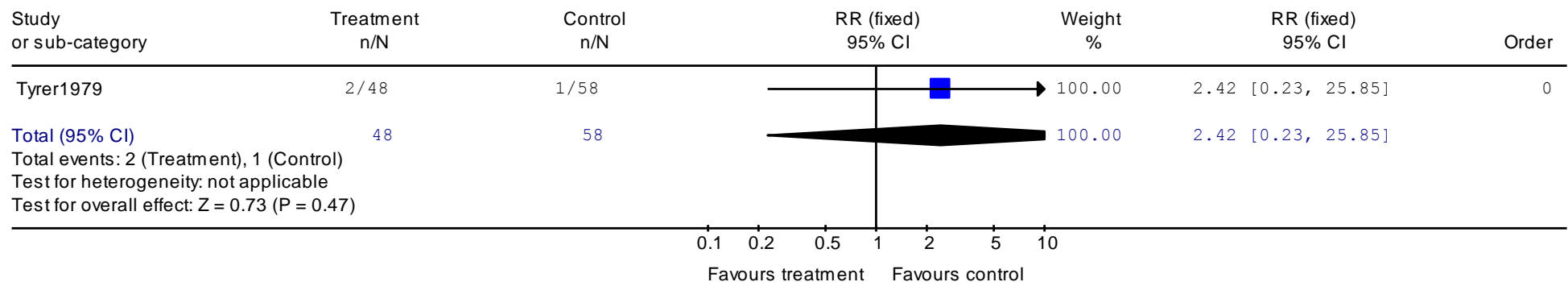




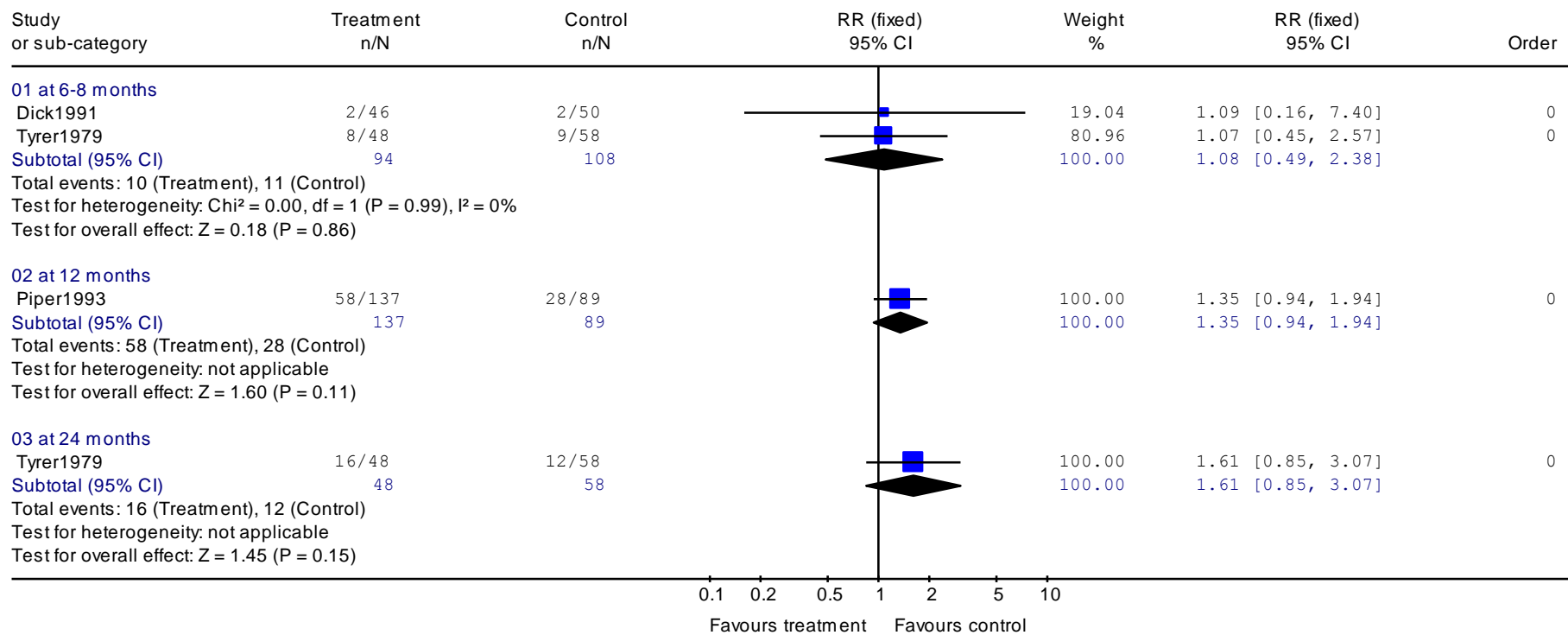
Review: Service: Day hospitals  
 Comparison: 01 Day hospital vs Inpatient care Type 1 trials (unsuitable patients excluded before randomisation)  
 Outcome: 09 All hospital days/month (individual patient data)



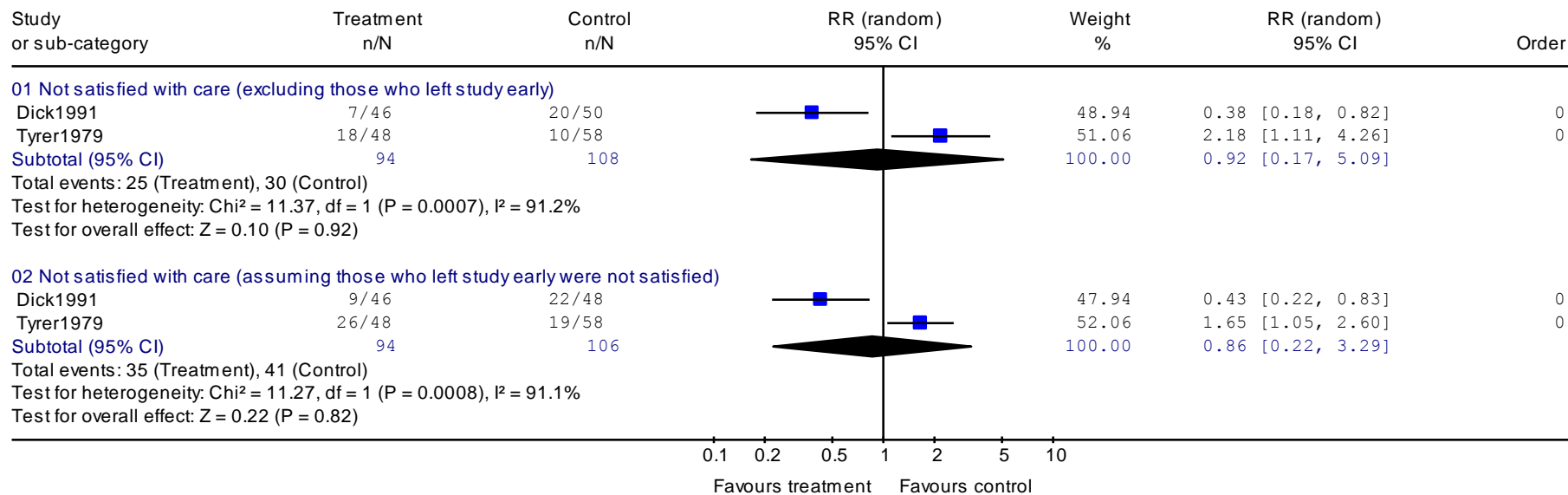
Review: Service: Day hospitals  
 Comparison: 02 Day hospital vs outpatient care  
 Outcome: 01 Deaths (all causes)



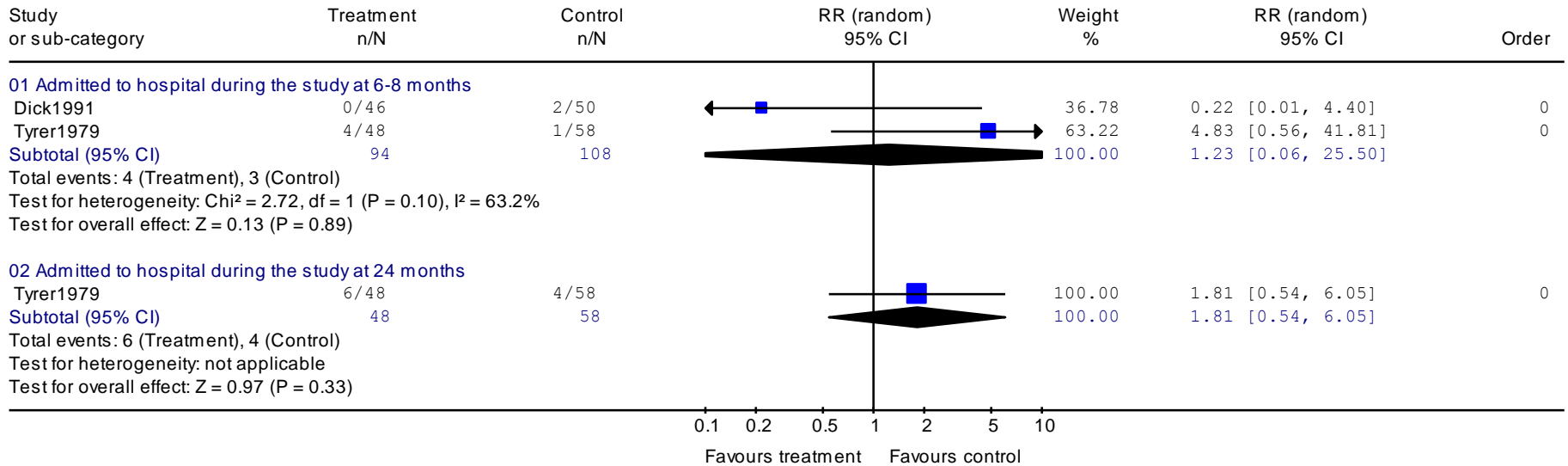
Review: Service: Day hospitals  
 Comparison: 02 Day hospital vs outpatient care  
 Outcome: 02 Number lost to follow-up



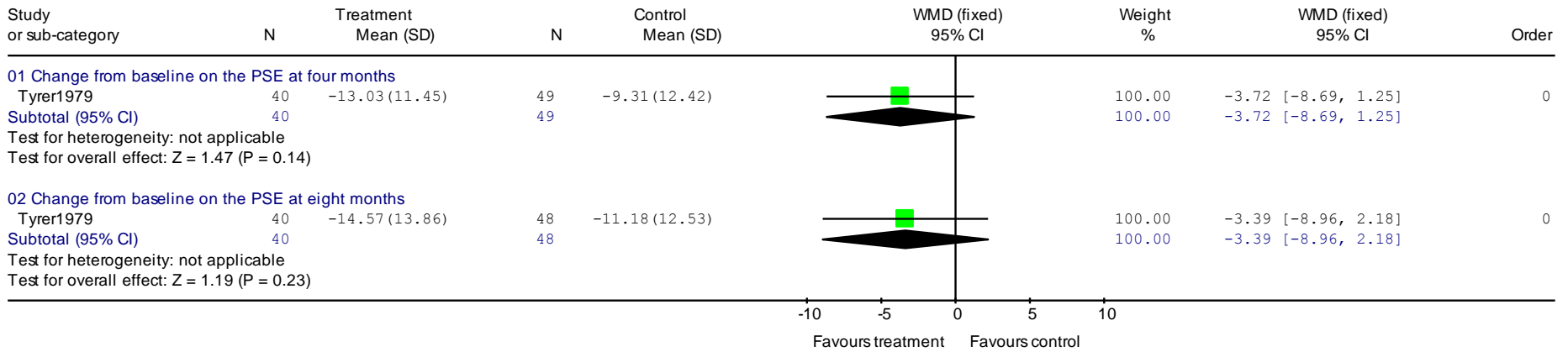
Review: Service: Day hospitals  
 Comparison: 02 Day hospital vs outpatient care  
 Outcome: 03 Satisfaction with care



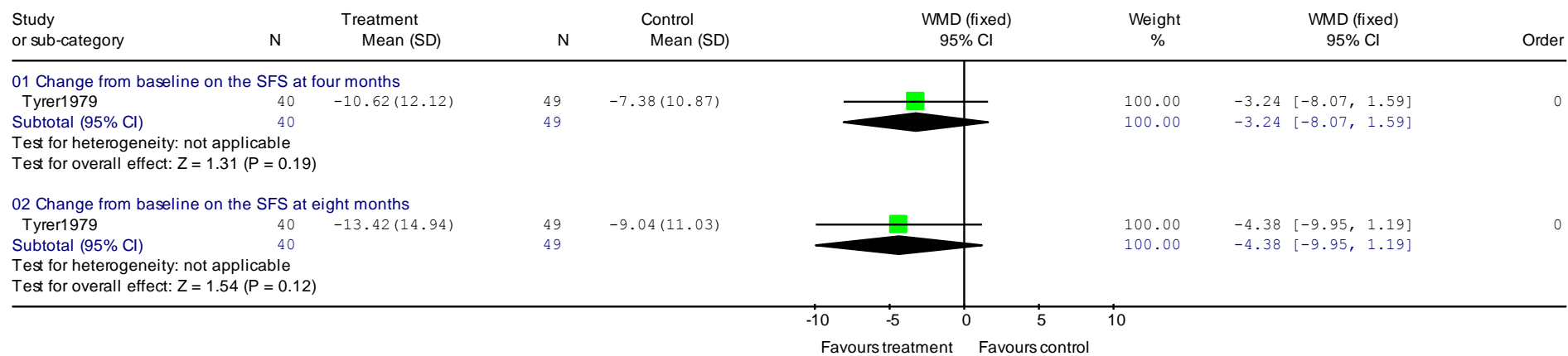
Review: Service: Day hospitals  
 Comparison: 02 Day hospital vs outpatient care  
 Outcome: 04 Hospital admissions



Review: Service: Day hospitals  
 Comparison: 02 Day hospital vs outpatient care  
 Outcome: 05 Mental state

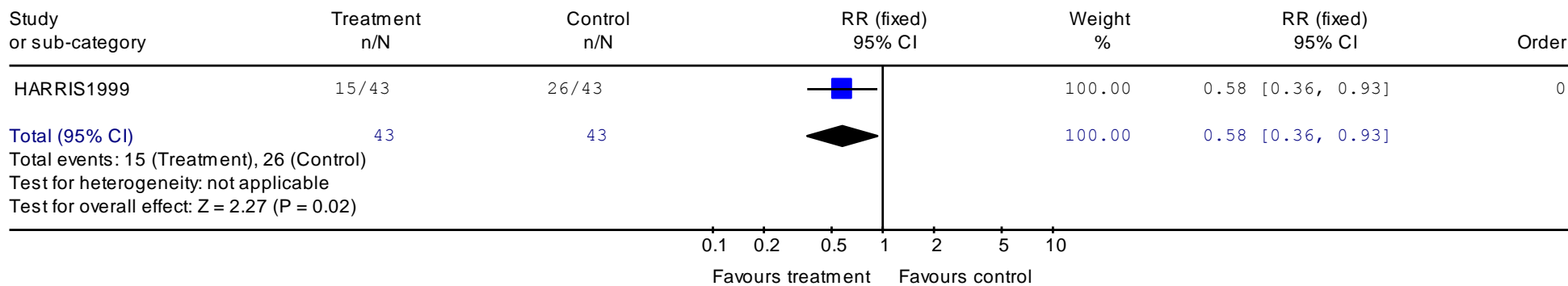


Review: Service: Day hospitals  
 Comparison: 02 Day hospital vs outpatient care  
 Outcome: 06 Social functioning



## Non-statutory support

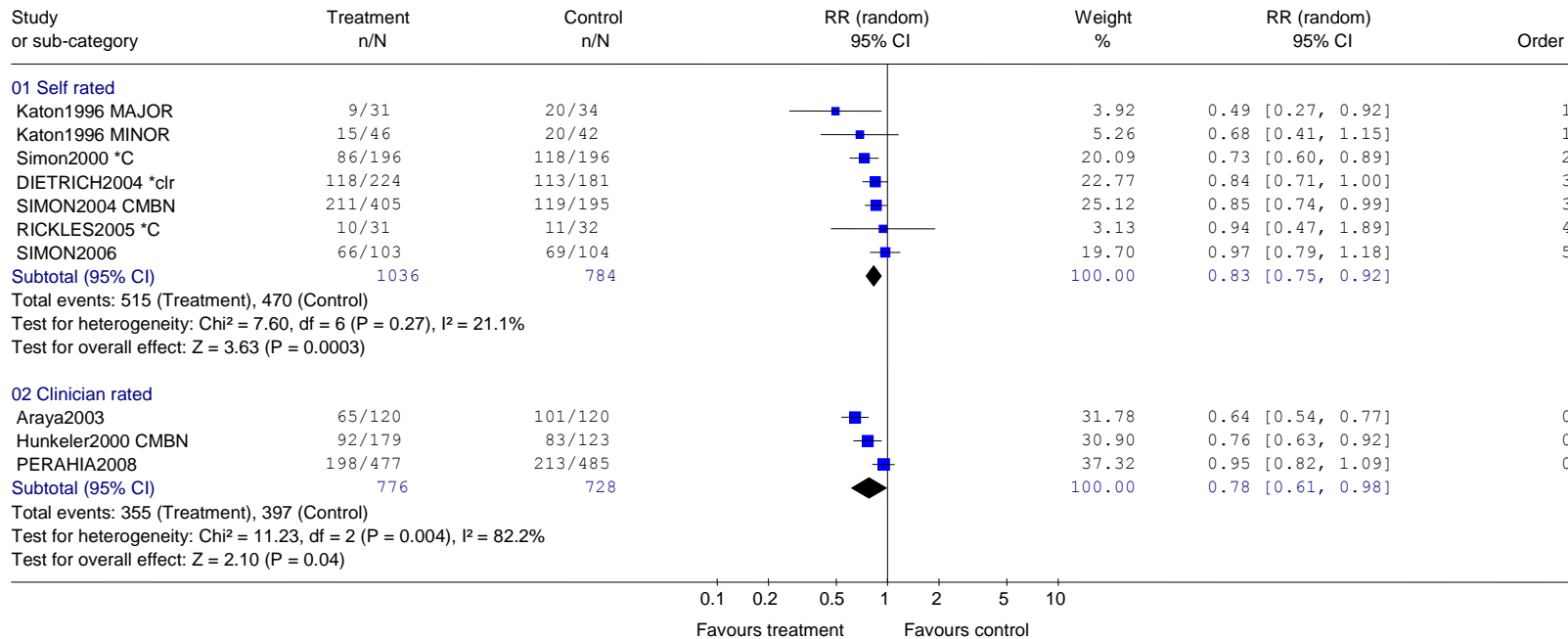
Review: Service: Non-statutory support  
 Comparison: 01 Befriending versus wait list control  
 Outcome: 01 Non-remitters



# Collaborative care

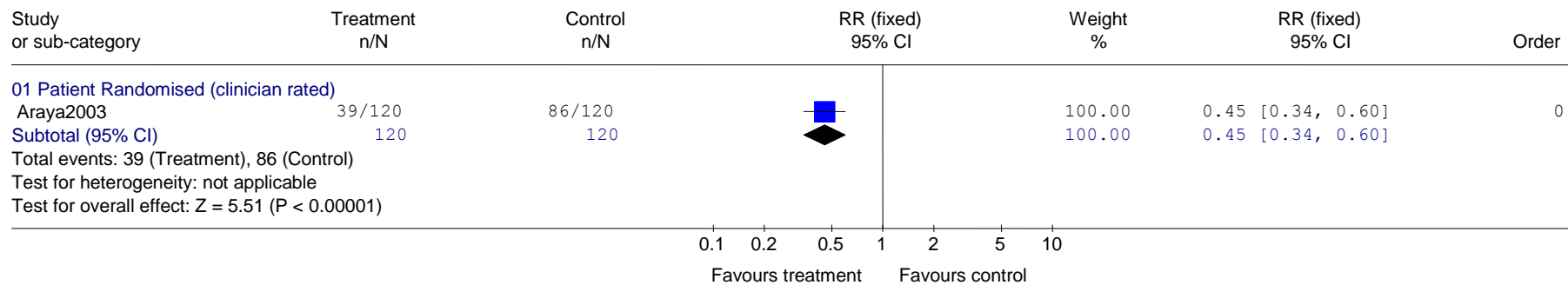
## Collaborative care (C-care) 01: Efficacy - pre-sensitivity analysis C-care 01.01 Non-response at endpoint - ordered by year of publication

Review: Depression Update Service: Collaborative Care  
 Comparison: 01 Overall Efficacy v usual care - post ICC adjustment  
 Outcome: 01 Number not achieving =>50% reduction in outcome score at endpoint



### C-care 01.02 Non-response at follow-up: 3 months

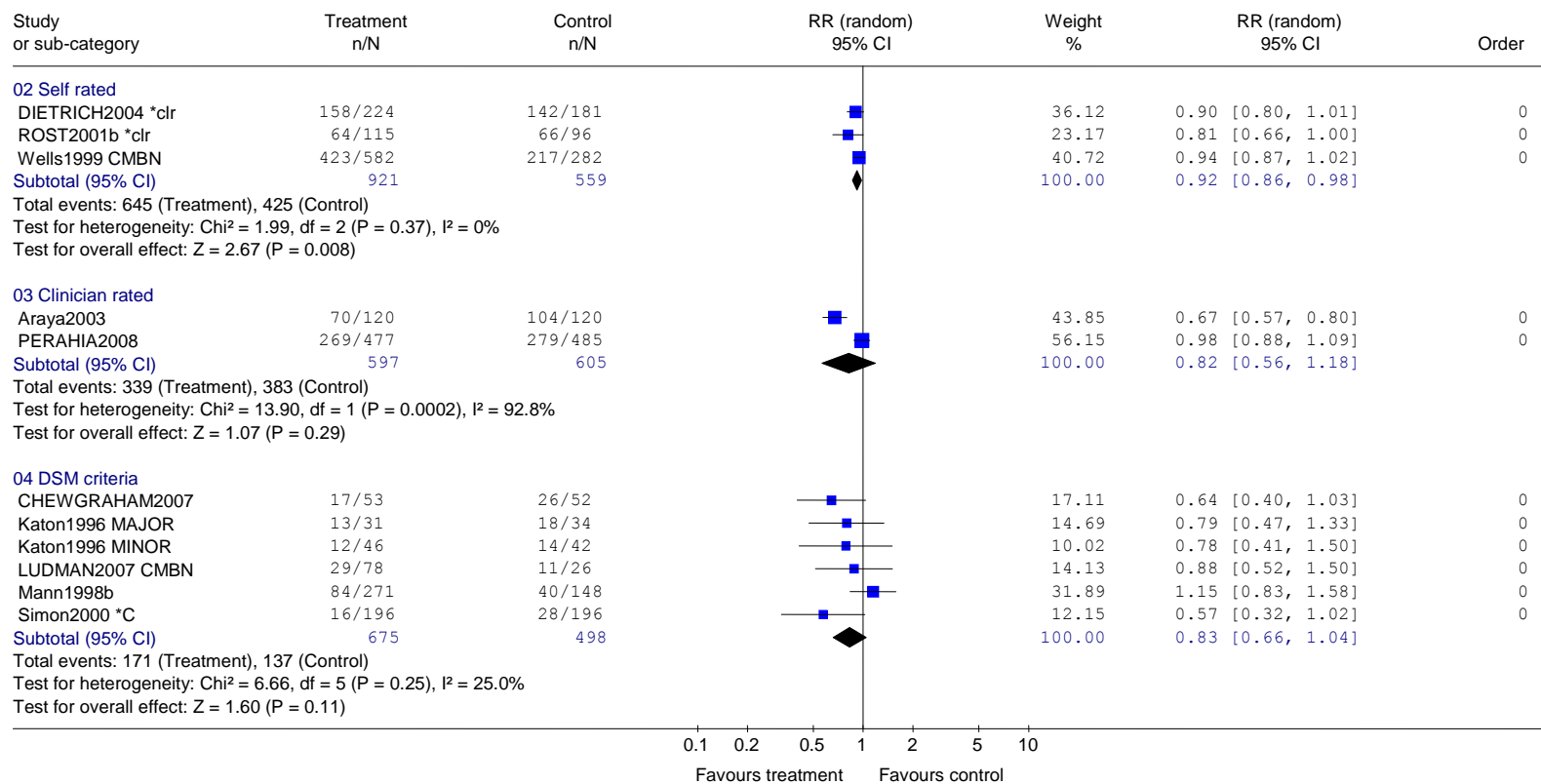
Review: Depression Update Service: Collaborative Care  
 Comparison: 01 Overall Efficacy v usual care - post ICC adjustment  
 Outcome: 02 Number not achieving =>50% reduction in outcome score at follow-up: 3 months





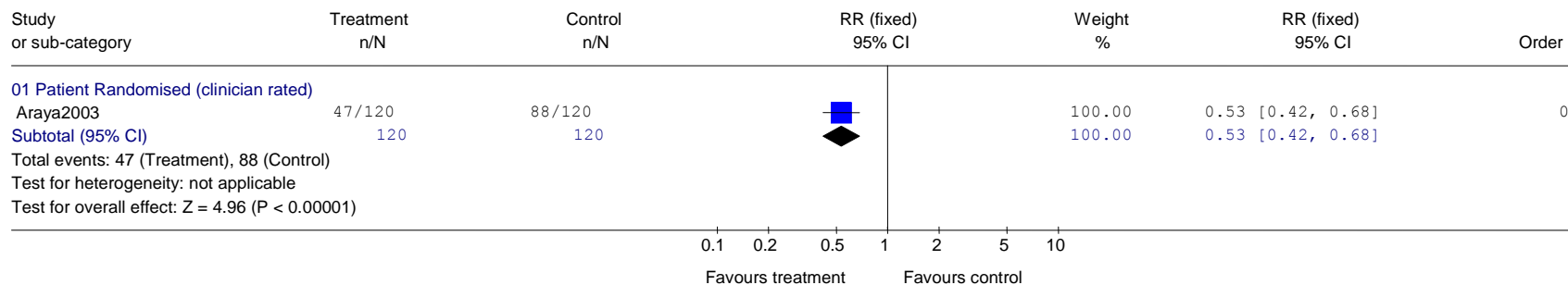
## C-care 01.03 Non-remission at endpoint

Review: Depression Update Service: Collaborative Care  
 Comparison: 01 Overall Efficacy v usual care - post ICC adjustment  
 Outcome: 03 Number not achieving remission at endpoint



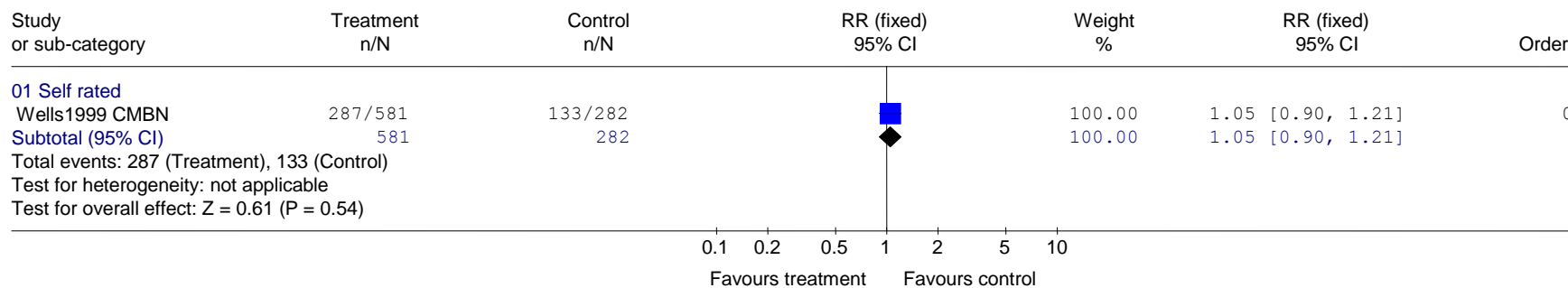
### C-care 01.04 Non-remission at follow-up: 3 months

Review: Depression Update Service: Collaborative Care  
 Comparison: 01 Overall Efficacy v usual care - post ICC adjustment  
 Outcome: 04 Number not achieving remission at follow-up: 3 months



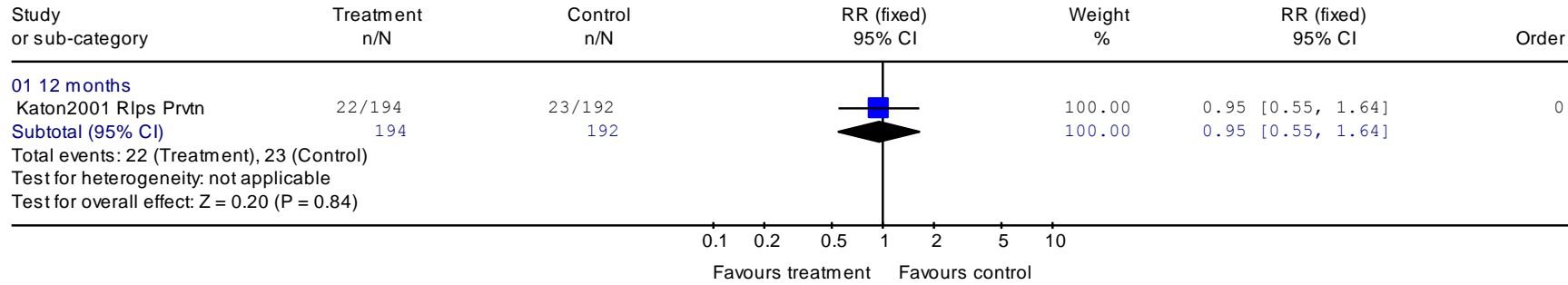
### C- care 01.05 Non-remission at follow-up: 12 months

Review: Depression Update Service: Collaborative Care  
 Comparison: 01 Overall Efficacy v usual care - post ICC adjustment  
 Outcome: 05 Number not achieving remission at follow-up: 12 months



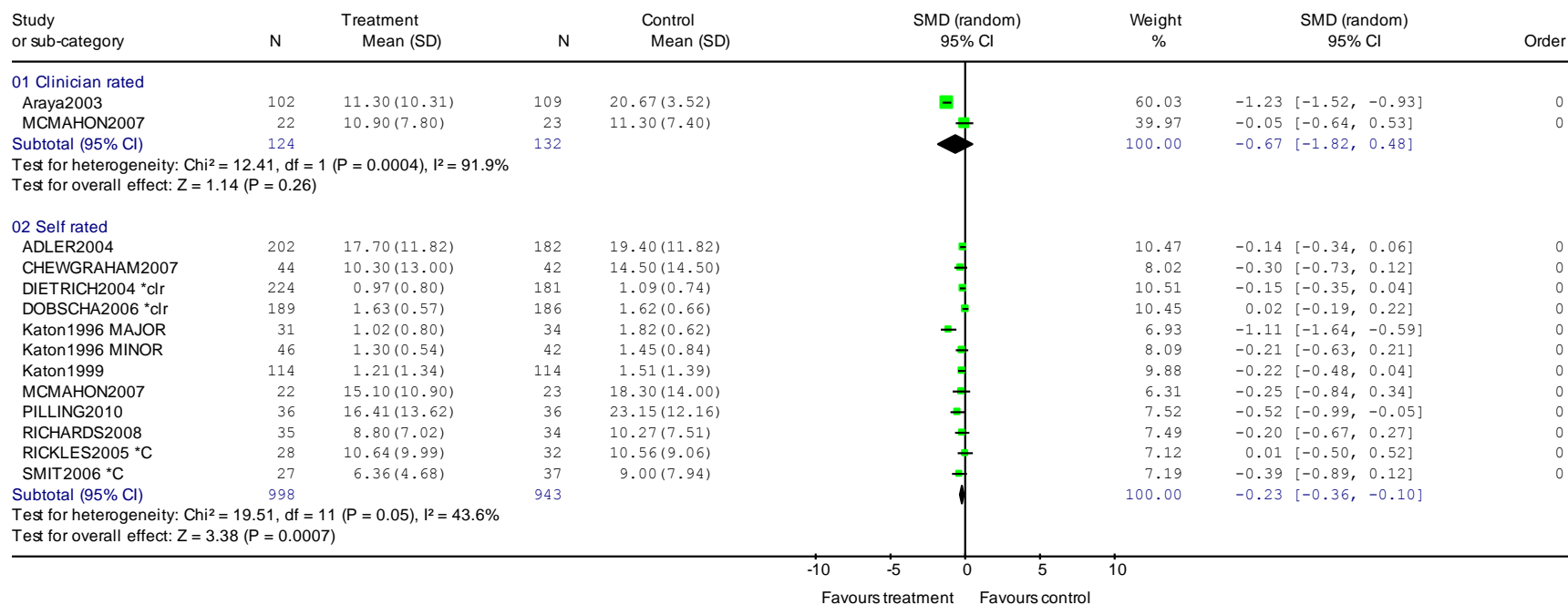
### C-care 01.06 Relapse at endpoint

Review: Depression Update Service: Collaborative Care  
 Comparison: 01 Overall Efficacy v usual care - post ICC adjustment  
 Outcome: 06 Relapse Prevention



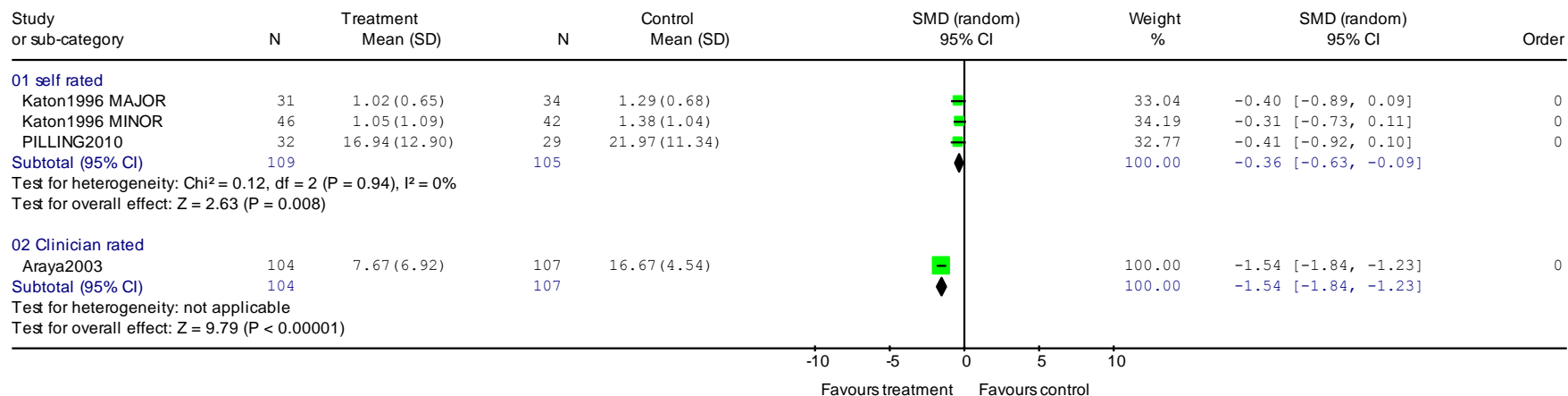
### C-care 01.07 Mean endpoint (clinician-rated and self-rated)

Review: Depression Update Service: Collaborative Care  
 Comparison: 01 Overall Efficacy v usual care - post ICC adjustment  
 Outcome: 07 Mean endpoint



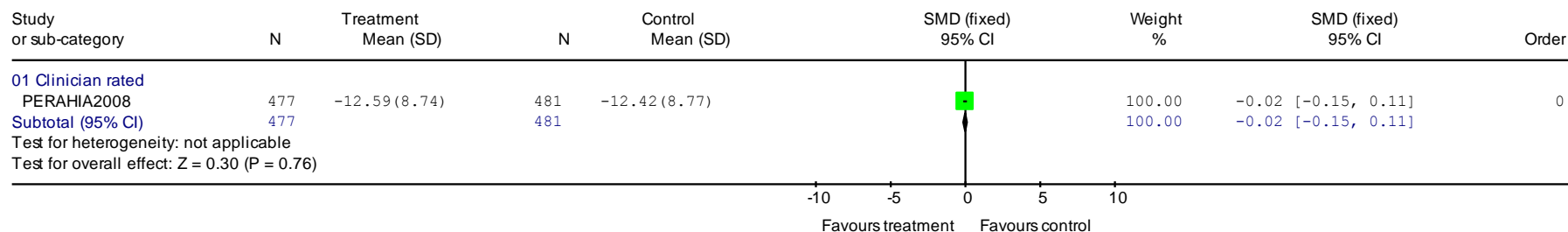
### C-care 01.08 Mean endpoint (self-rated) at follow-up: 3-4 months

Review: Depression Update Service: Collaborative Care  
 Comparison: 01 Overall Efficacy v usual care - post ICC adjustment  
 Outcome: 08 Mean endpoint scores at follow-up: 3-4 months



### C-care 01.09 Mean change at endpoint (clinician-rated)

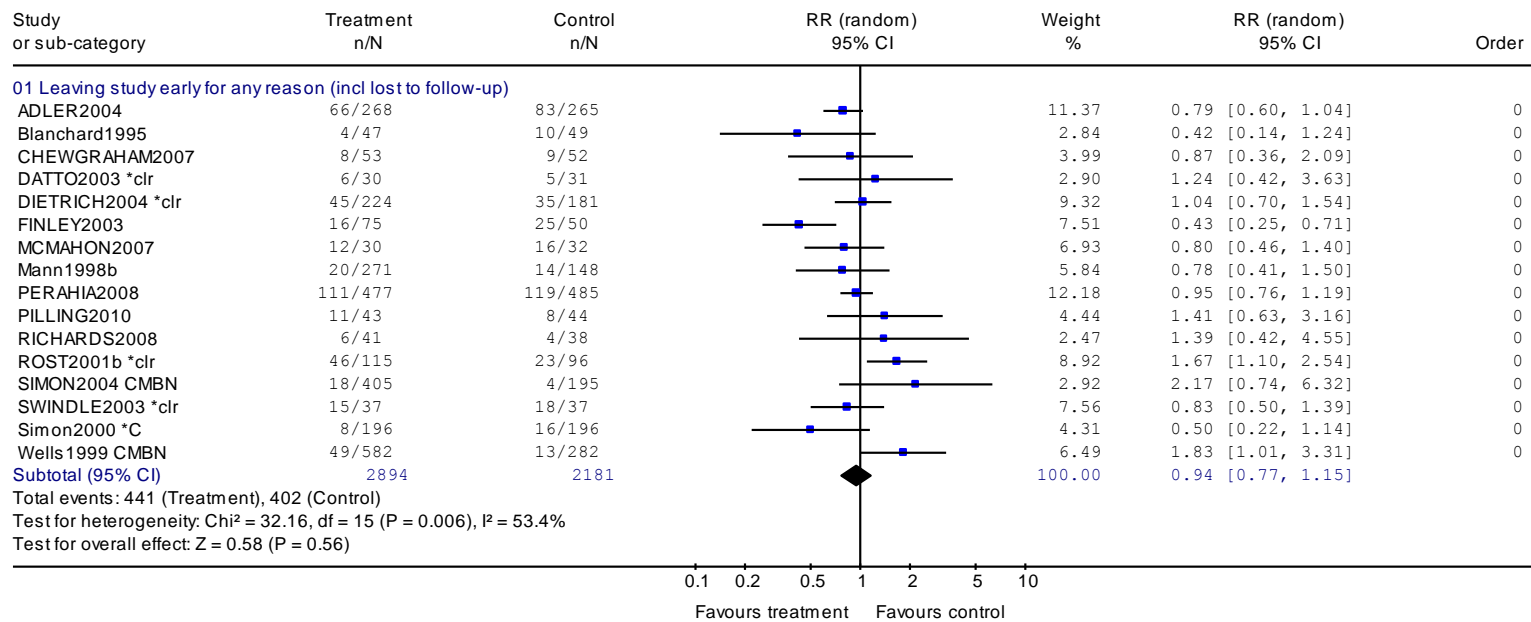
Review: Depression Update Service: Collaborative Care  
 Comparison: 01 Overall Efficacy v usual care - post ICC adjustment  
 Outcome: 09 Mean change at endpoint



## Collaborative care (C-care) 02: Acceptability and tolerability - pre-sensitivity analysis

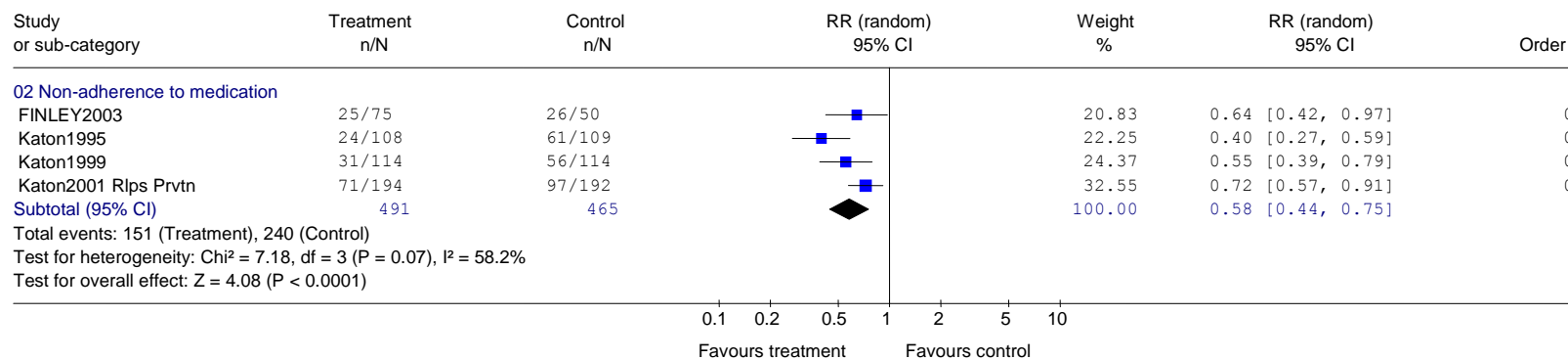
### C-care 02.01 Dropout at endpoint

Review: Depression Update Service: Collaborative Care  
 Comparison: 02 Overall acceptability and tolerability v usual care - post ICC adjustment  
 Outcome: 01 Attrition



## C-care 02.02 Non-adherence to medication at endpoint

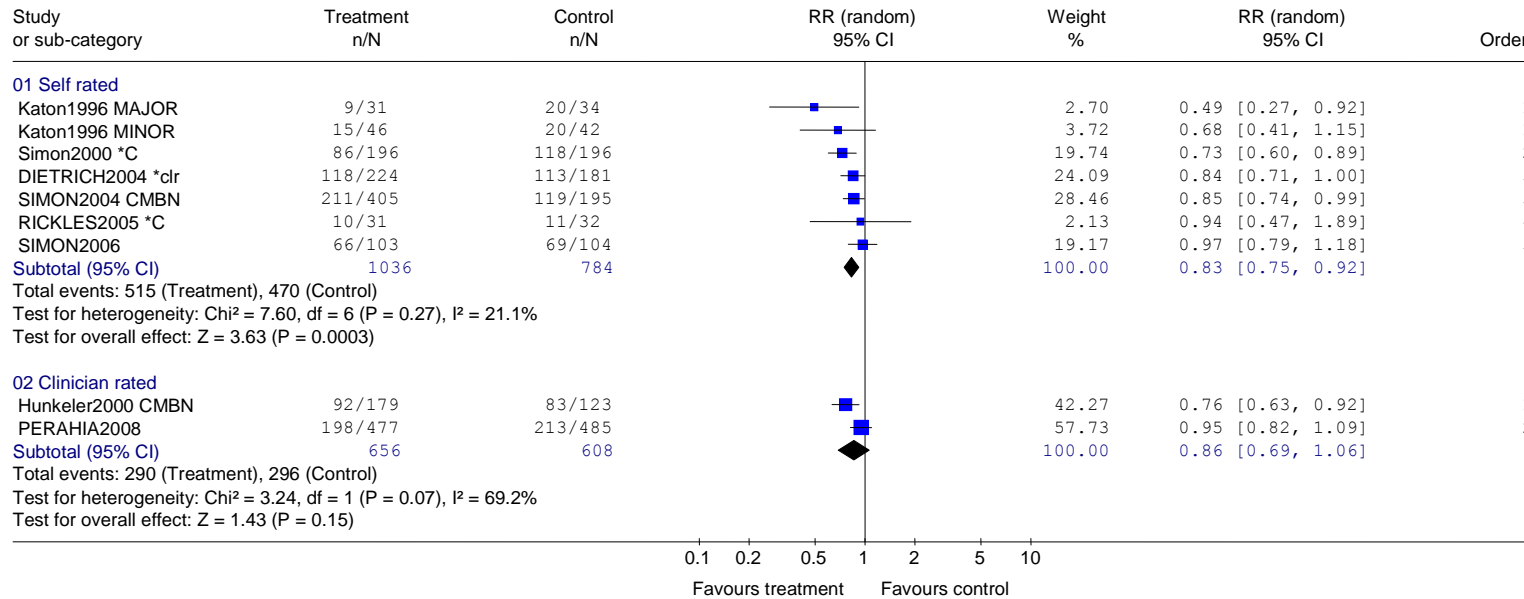
Review: Depression Update Service: Collaborative Care  
 Comparison: 02 Overall acceptability and tolerability v usual care - post ICC adjustment  
 Outcome: 02 Adherence



## Collaborative care (C-care) 03: Efficacy - sensitivity analysis

### 03.01 Non-response at endpoint - ordered by year of publication

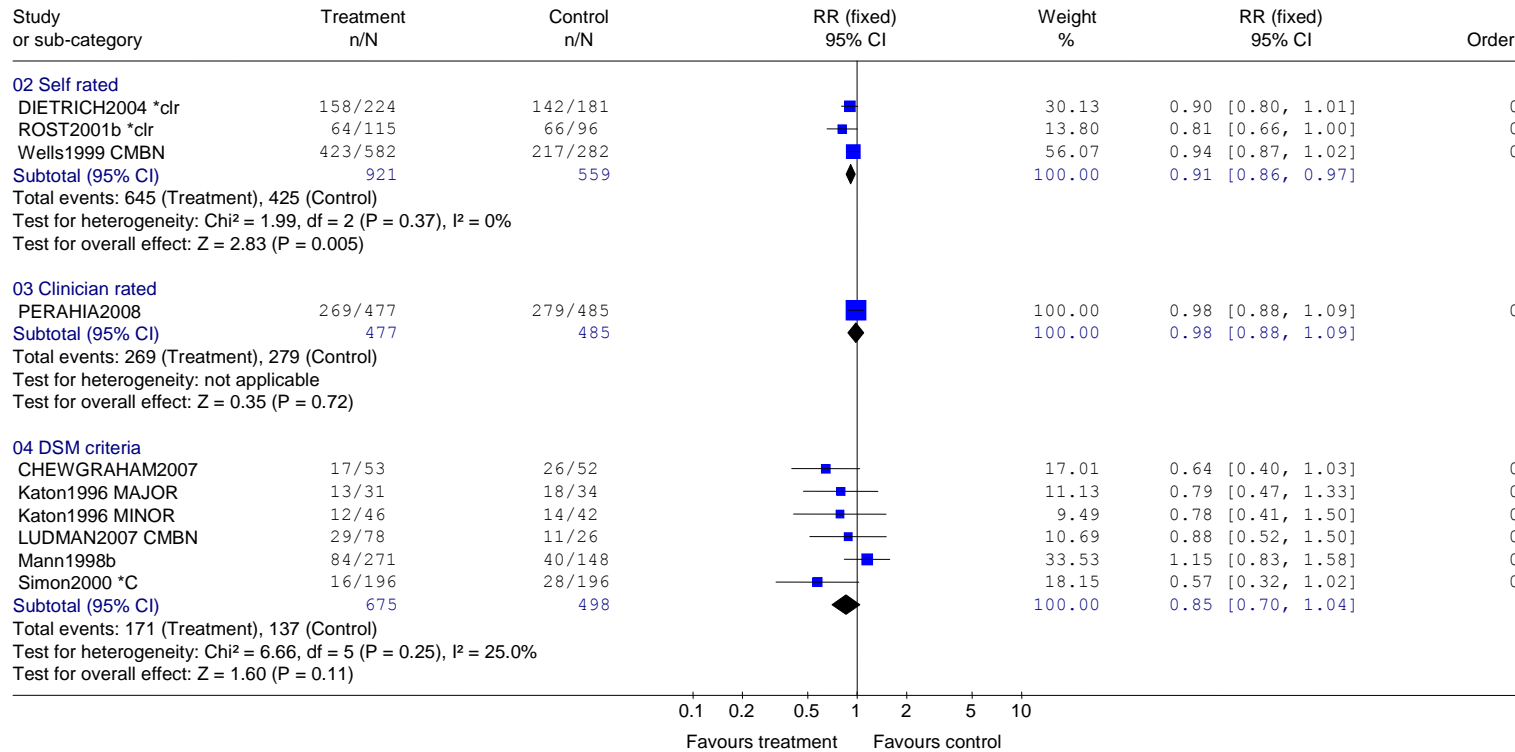
Review: Depression Update Service: Collaborative Care  
 Comparison: 03 Overall efficacy - sensitivity analysis  
 Outcome: 01 Number not achieving =>50% reduction in outcome score at endpoint





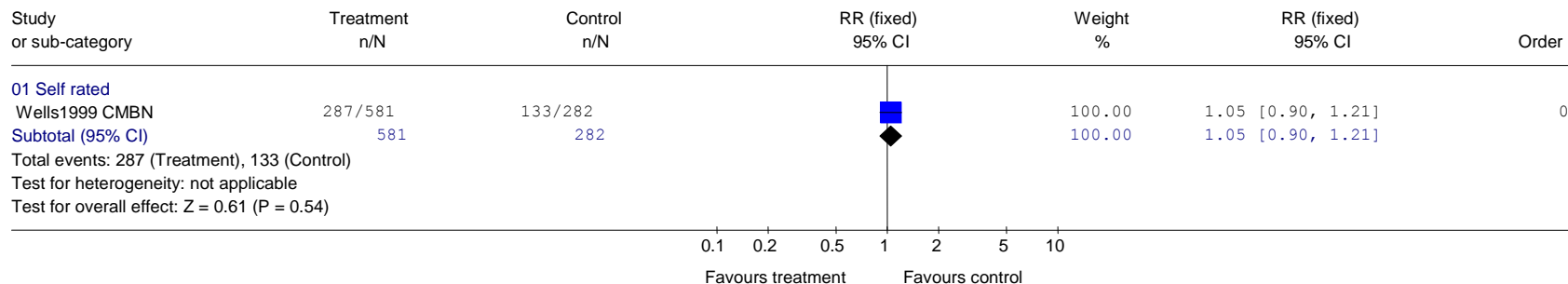
## C-care 03.02 Non-remission at endpoint

Review: Depression Update Service: Collaborative Care  
 Comparison: 03 Overall efficacy - sensitivity analysis  
 Outcome: 02 Number not achieving remission at endpoint



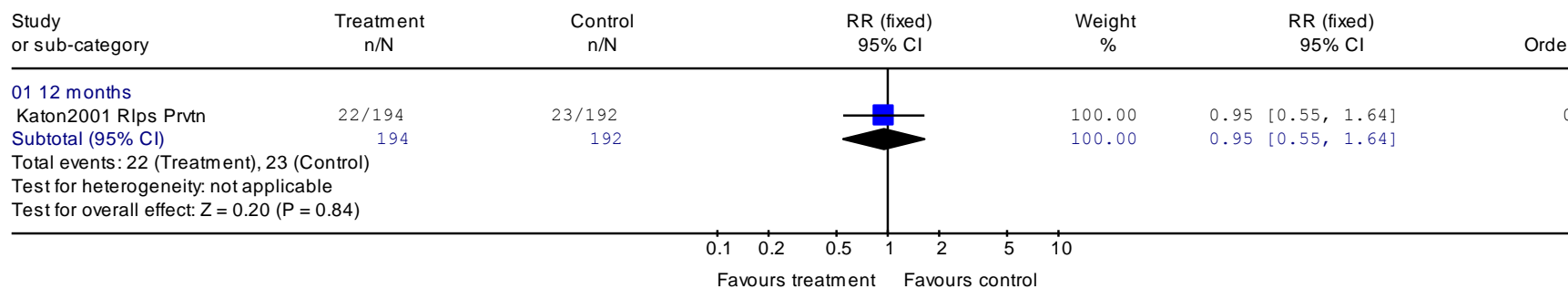
### C-care 03.03 Non-remission at follow-up: 12 months

Review: Depression Update Service: Collaborative Care  
 Comparison: 03 Overall efficacy - sensitivity analysis  
 Outcome: 03 Number not achieving remission at follow-up: 12 months



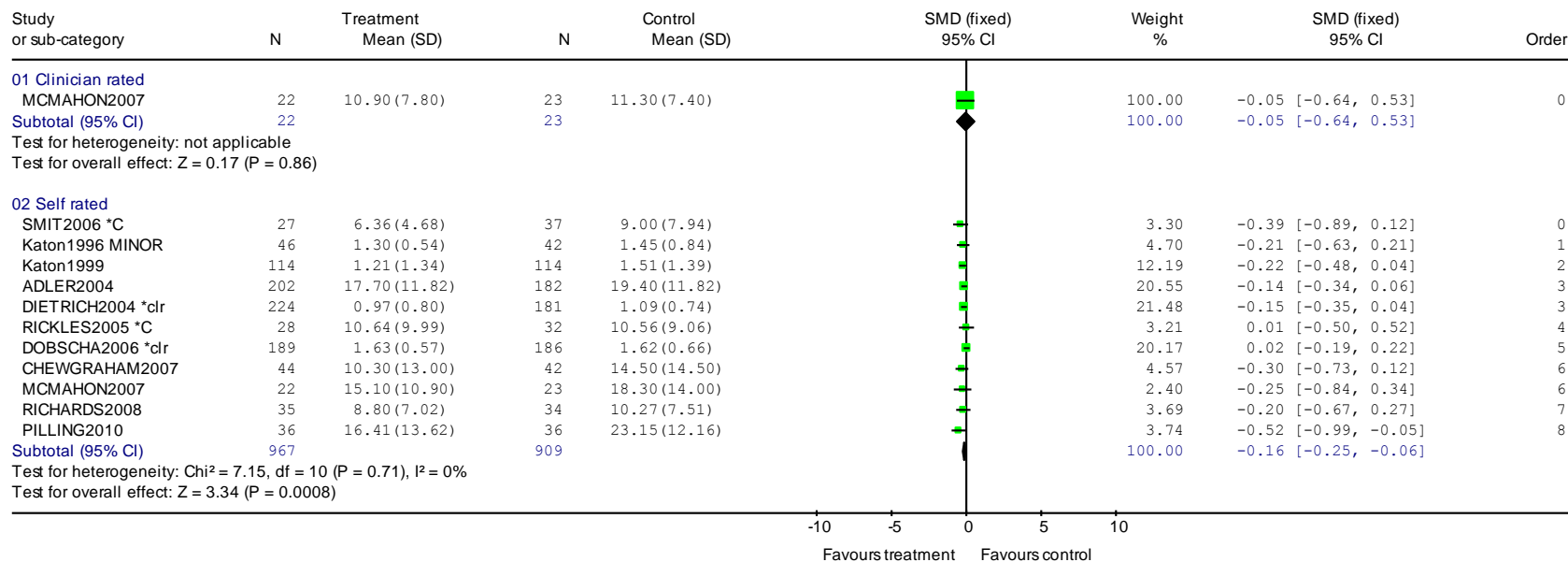
### C-care 03.04 Relapse at endpoint

Review: Depression Update Service: Collaborative Care  
 Comparison: 03 Overall efficacy - sensitivity analysis  
 Outcome: 04 Relapse Prevention



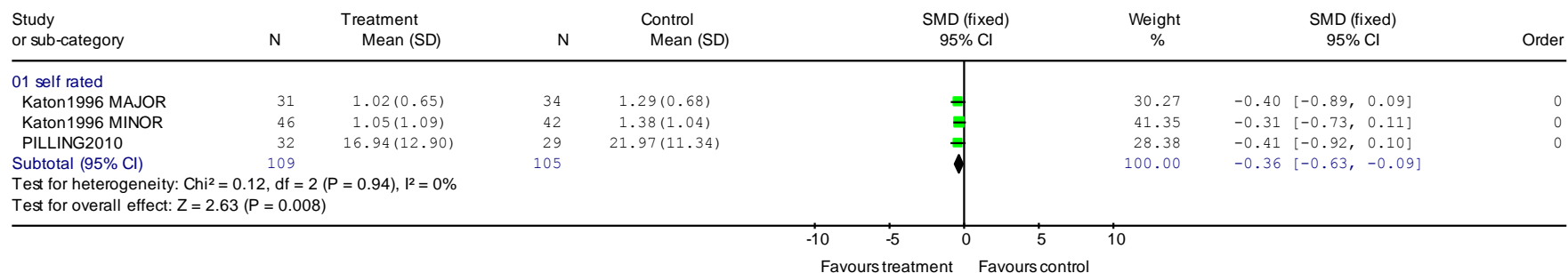
### C-care 03.05 Mean endpoint (clinician-rated and self-rated)

Review: Depression Update Service: Collaborative Care  
 Comparison: 03 Overall efficacy - sensitivity analysis  
 Outcome: 05 Mean endpoint



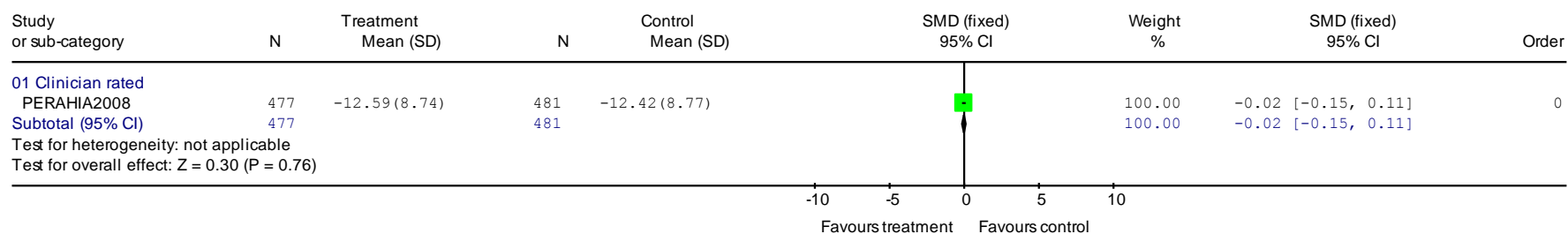
### C-care 03.06 Mean endpoint (self-rated) at follow-up: 3-4 months

Review: Depression Update Service: Collaborative Care  
 Comparison: 03 Overall efficacy - sensitivity analysis  
 Outcome: 06 Mean endpoint scores (self-rated) at follow-up: 3-4 months



### C-care 03.07 Mean change at endpoint

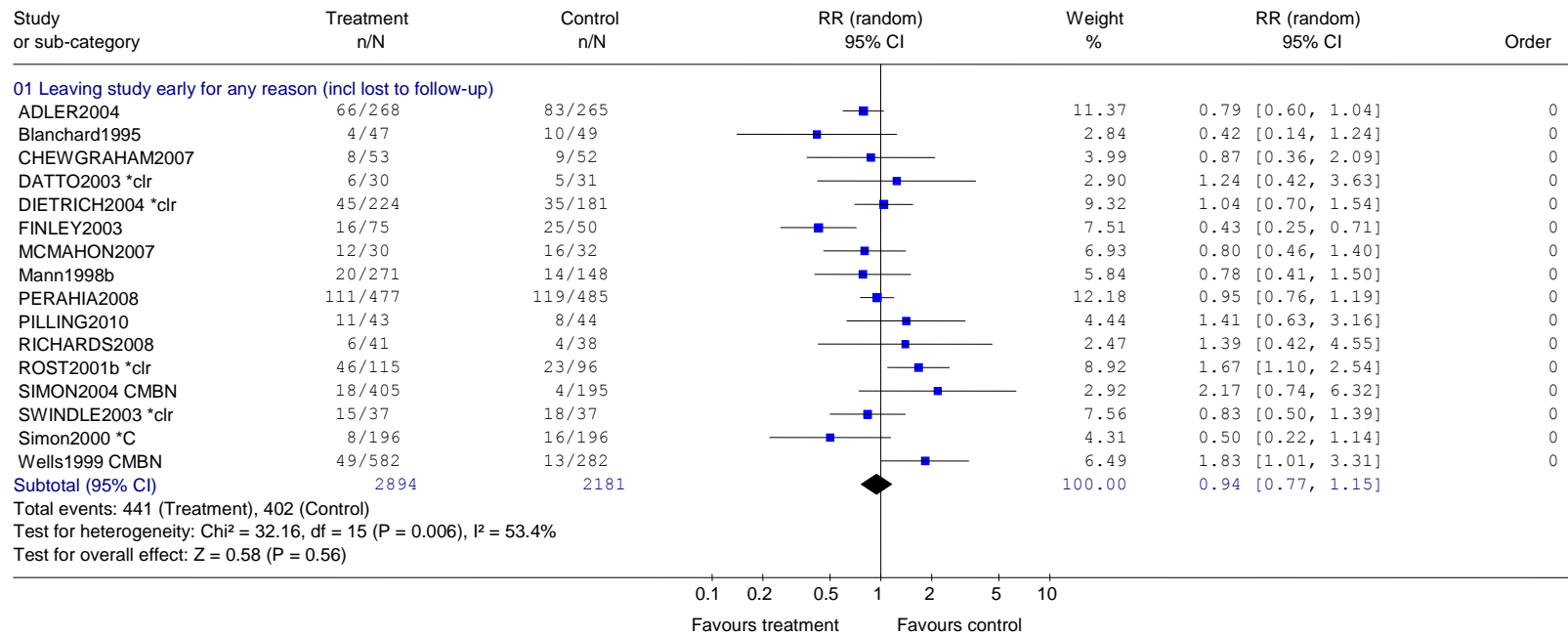
Review: Depression Update Service: Collaborative Care  
 Comparison: 03 Overall efficacy - sensitivity analysis  
 Outcome: 07 Mean change at endpoint



## Collaborative care (C-care) 04: Acceptability and tolerability - sensitivity analysis

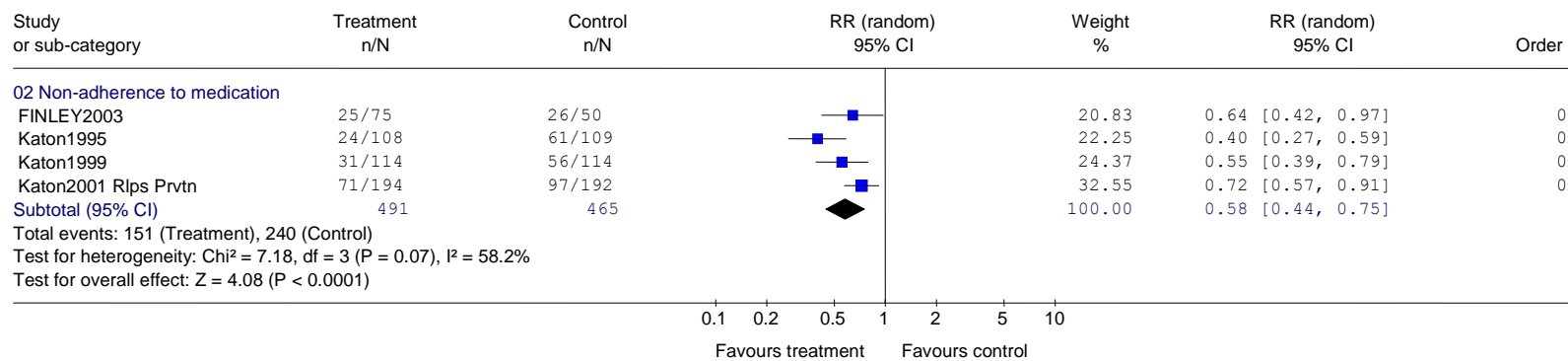
### C-care 04.01 Dropout at endpoint

Review: Depression Update Service: Collaborative Care  
 Comparison: 04 Overall acceptability and tolerability v usual care - sensitivity analysis  
 Outcome: 01 Attrition



## C-care 04.02 Non-adherence to medication at endpoint

Review: Depression Update Service: Collaborative Care  
 Comparison: 04 Overall acceptability and tolerability v usual care - sensitivity analysis  
 Outcome: 02 Adherence

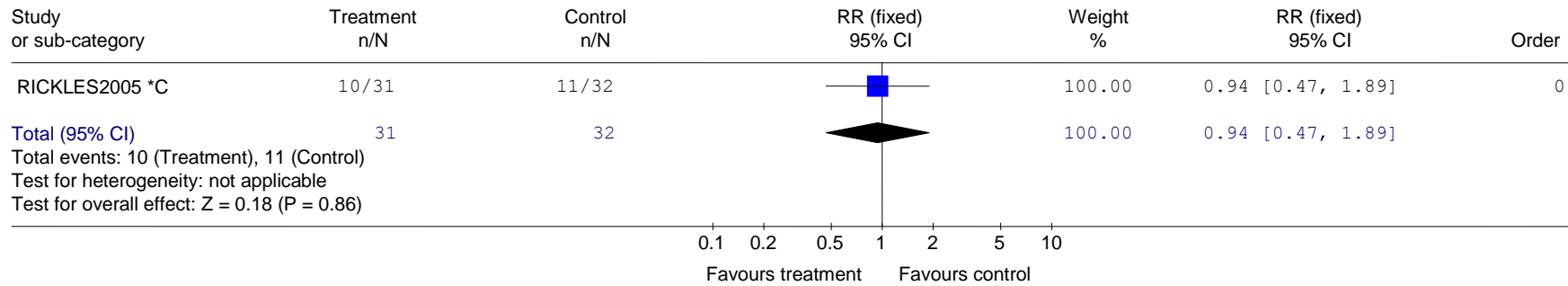


# Medication management

## Medication management (Med-man) 01: Efficacy

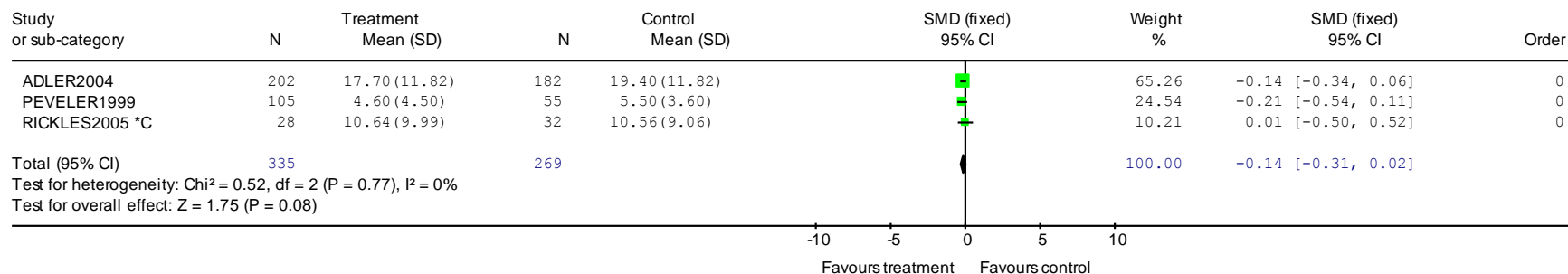
### Med-man 01.01 Non-response at endpoint

Review: Depression Update Service: Medication Management  
 Comparison: 01 Overall Efficacy (v usual care)  
 Outcome: 01 Number not achieving  $\geq$ 50% reduction in outcome score



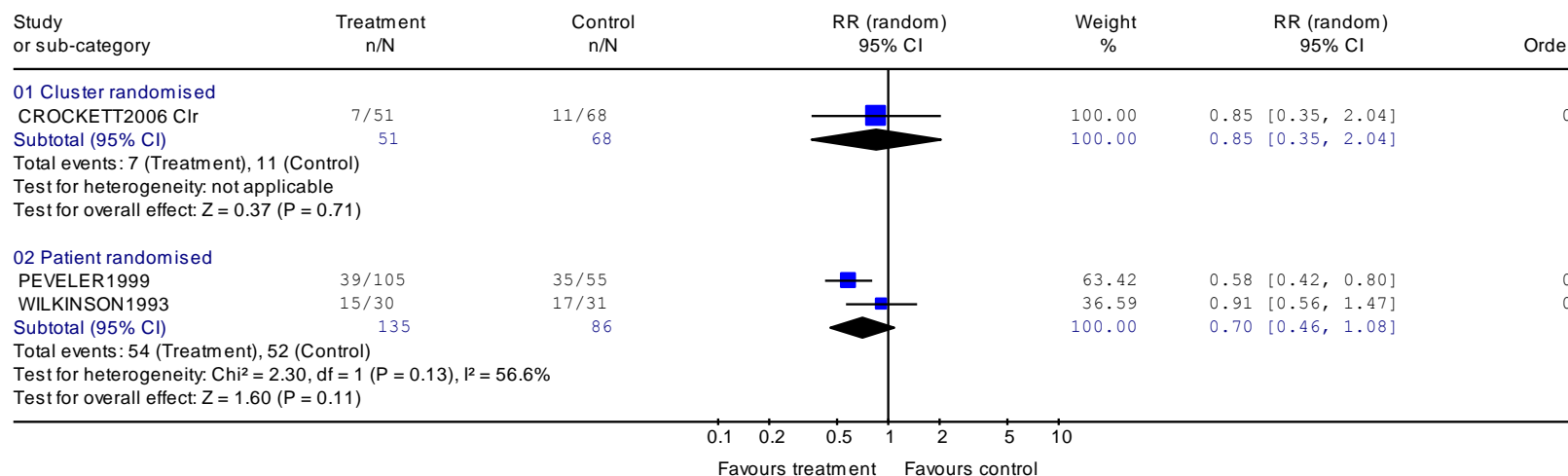
### Med-man 01.02 Mean endpoint (self-rated)

Review: Depression Update Service: Medication Management  
 Comparison: 01 Overall Efficacy (v usual care)  
 Outcome: 02 Mean endpoint (self-rated)



### Med-man 01.03 Non-adherence to medication at endpoint

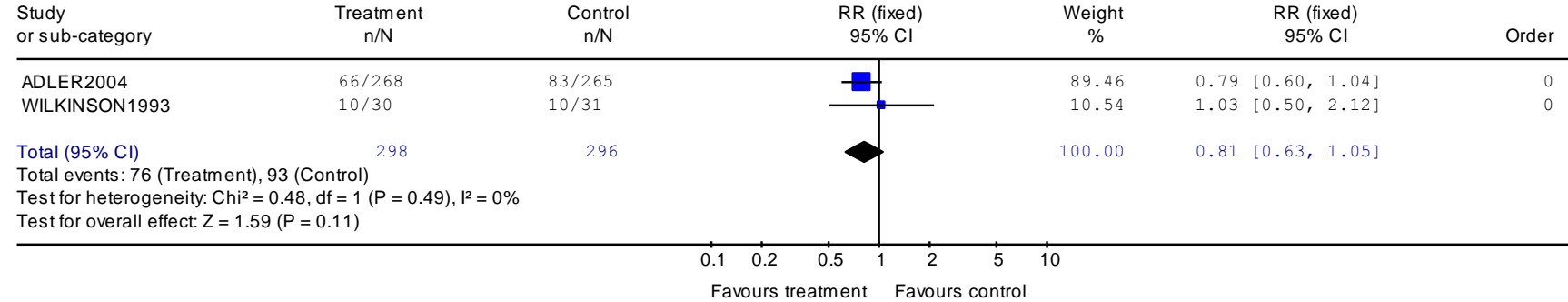
Review: Depression Update Service: Medication Management  
 Comparison: 01 Overall Efficacy (v usual care)  
 Outcome: 03 Non-adherence to medication





**Medication management (Med-man) 02: Acceptability and tolerability**  
**Med-man 02.01 Dropout at endpoint**

Review: Depression Update Service: Medication Management  
 Comparison: 02 Tolerability and acceptability (v usual care)  
 Outcome: 01 Leaving study early for any reason (incl lost to follow-up)



# Attached professional

## Attached professional 01: Efficacy

Mean endpoint (self-rated and clinician-rated)

Review: Dep Up Service Attached Professional v Usual Care/WLc (mean endpoint only)  
 Comparison: 01 Attached Professional (all) v Control (WLc/GPcare)  
 Outcome: 01 Depression scores: continuous measures at endpoint

