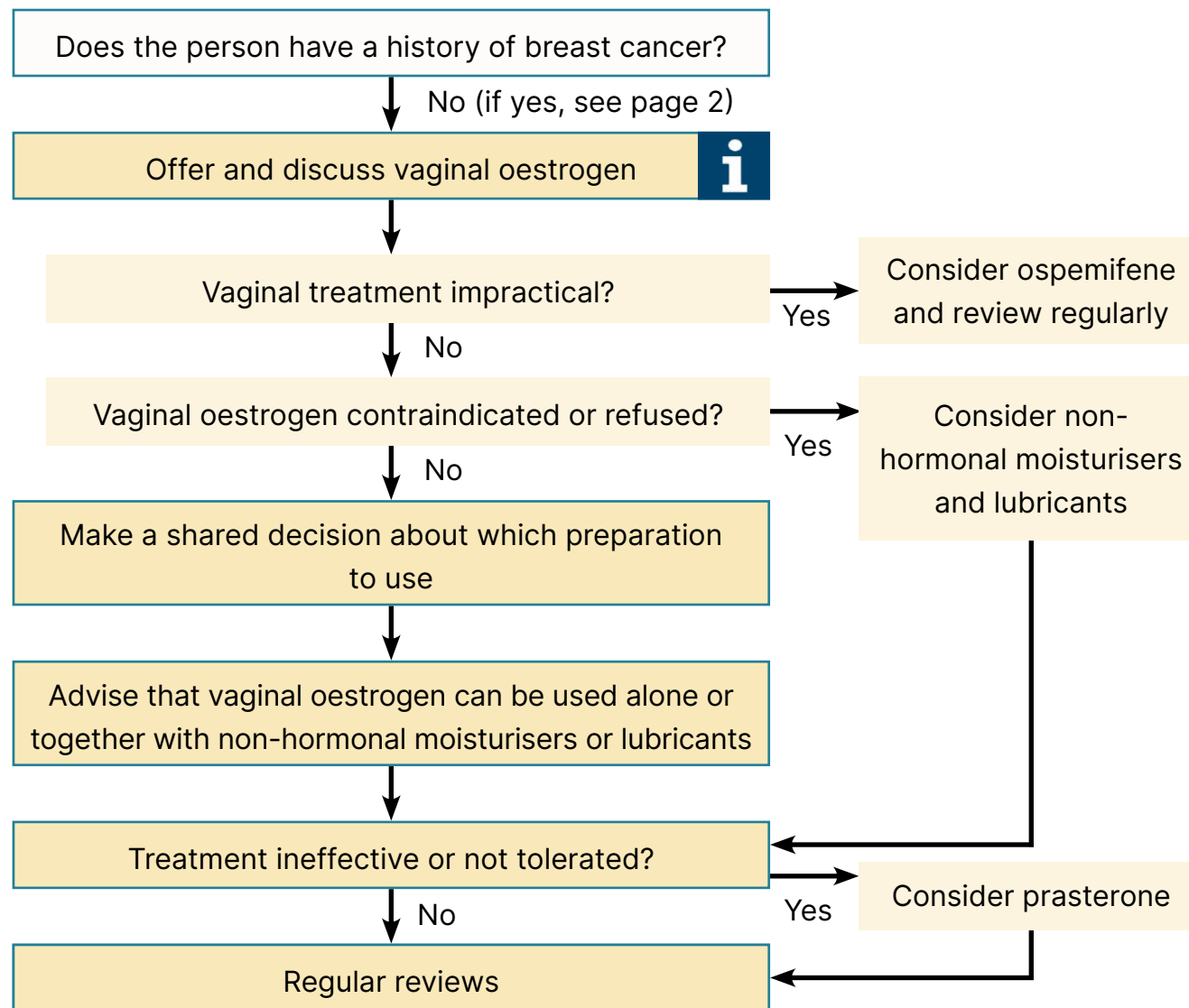


Genitourinary (GU) symptoms associated with menopause



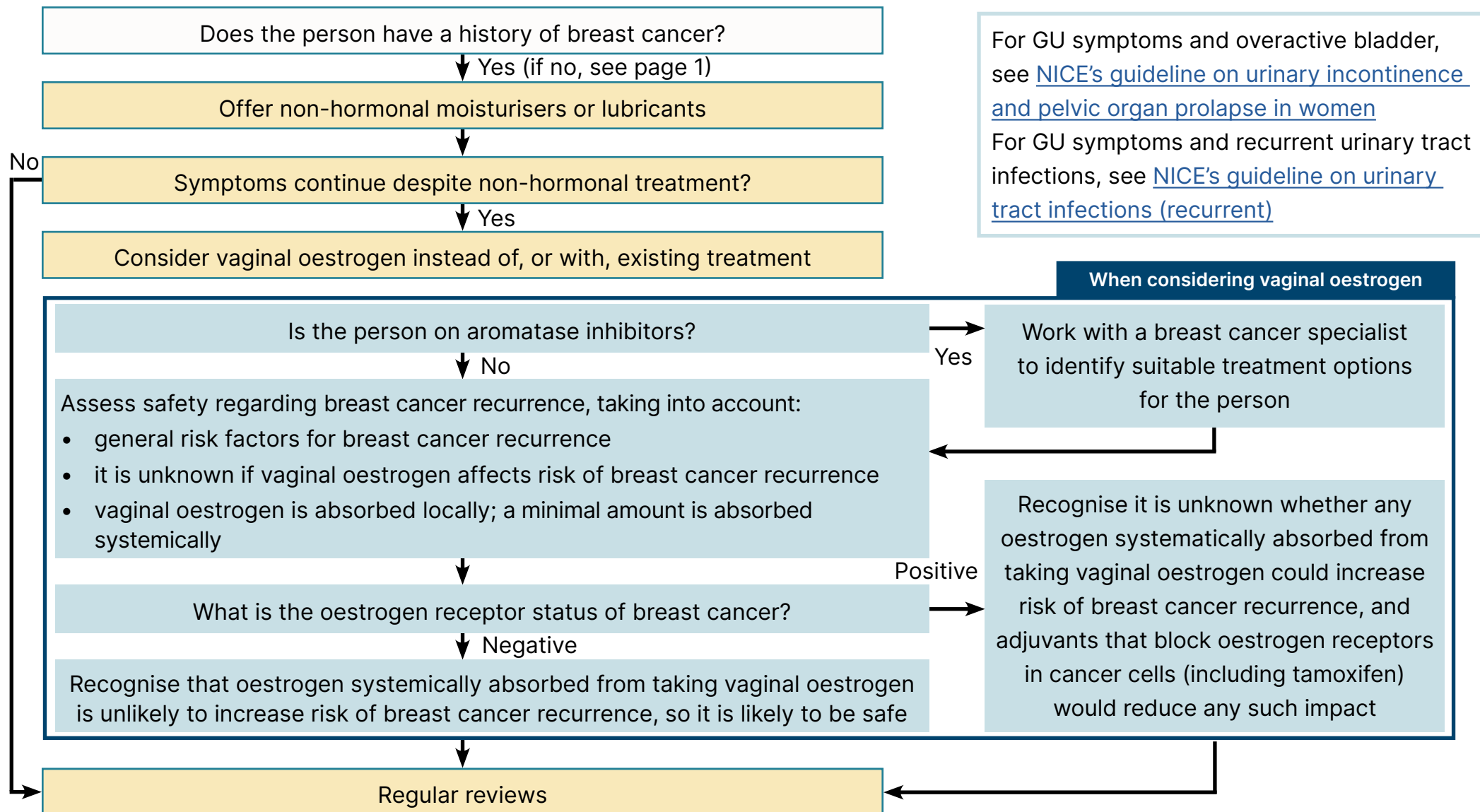
For GU symptoms and overactive bladder, see [NICE's guideline on urinary incontinence and pelvic organ prolapse in women](#)
 For GU symptoms and recurrent urinary tract infections, see [NICE's guideline on urinary tract infections \(recurrent\)](#)

i When discussing vaginal oestrogen, explain that:

- serious adverse effects are very rare
- treatment should be regularly reviewed
- symptoms often return when treatment is stopped, and
- vaginal oestrogen is absorbed locally; a minimal amount is absorbed systemically

! Do not offer vaginal laser treatment for GU symptoms associated with menopause unless as part of a randomised controlled trial (see [NICE's interventional procedures guidance on transvaginal laser therapy for urogenital atrophy](#))

Genitourinary (GU) symptoms associated with menopause



! Do not offer vaginal laser treatment for GU symptoms associated with menopause unless as part of a randomised controlled trial (see [NICE’s interventional procedures guidance on transvaginal laser therapy for urogenital atrophy](#))