

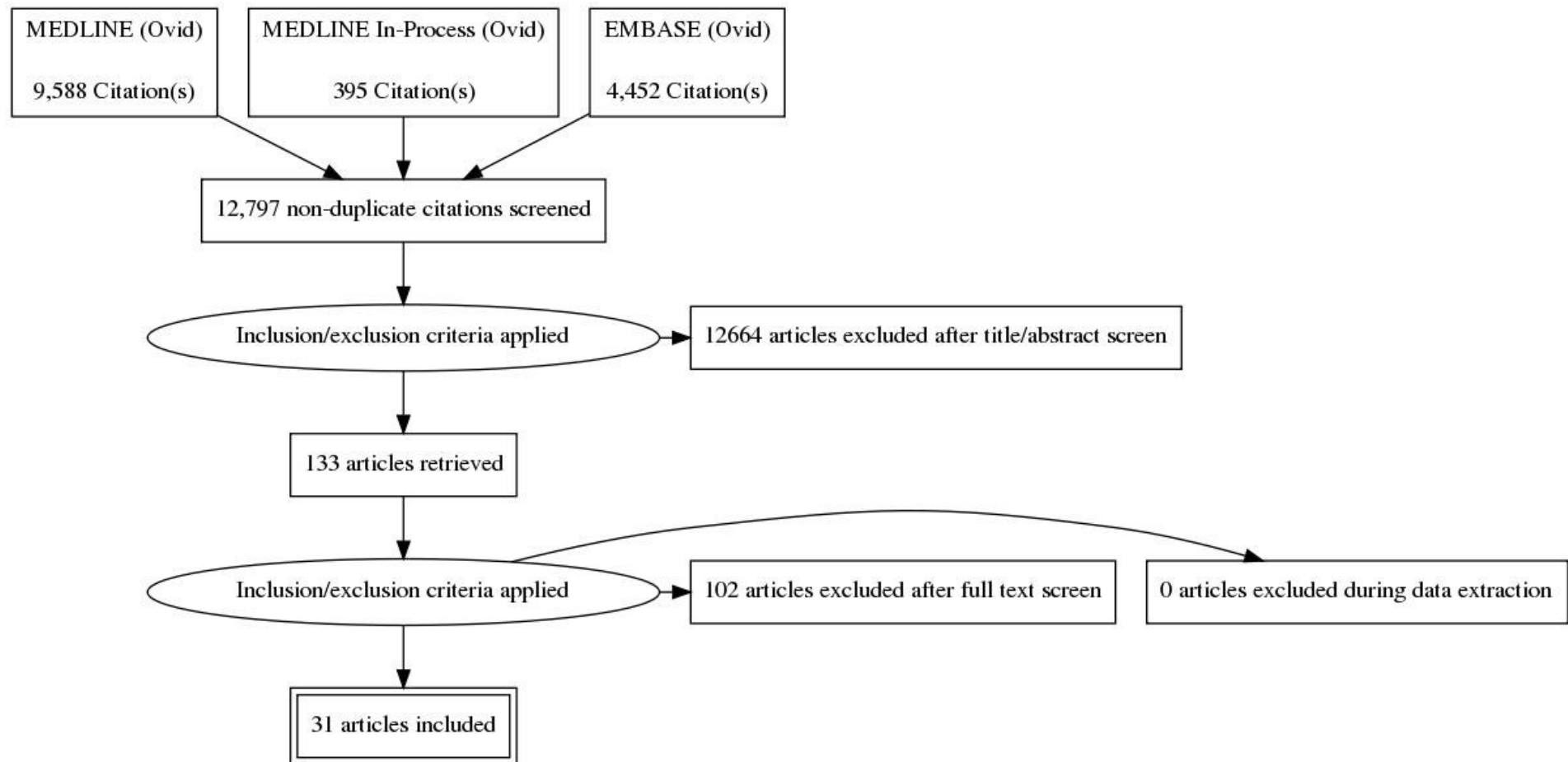
Appendix L: Review flowcharts

L.1 Recognition, referral and diagnosis

L.1.1 Signs, symptoms and risk factors of spondyloarthritis

Review questions 1-2 & 12

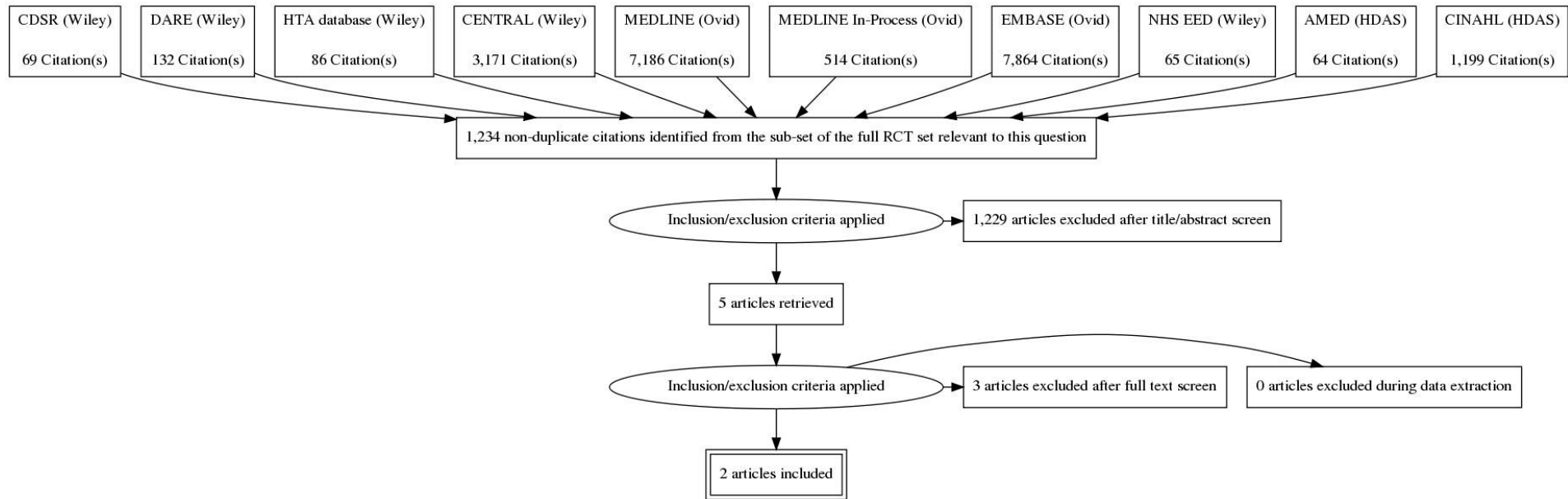
- What signs and symptoms should prompt a healthcare professional to think of spondyloarthritis?
- What risk factors should increase suspicion of spondyloarthritis?
- What are the indications (signs, risk factors, test or scan findings) for referral for specialist advice at initial diagnosis?



L.1.2 Comparative effectiveness of referral strategies

Review question 6

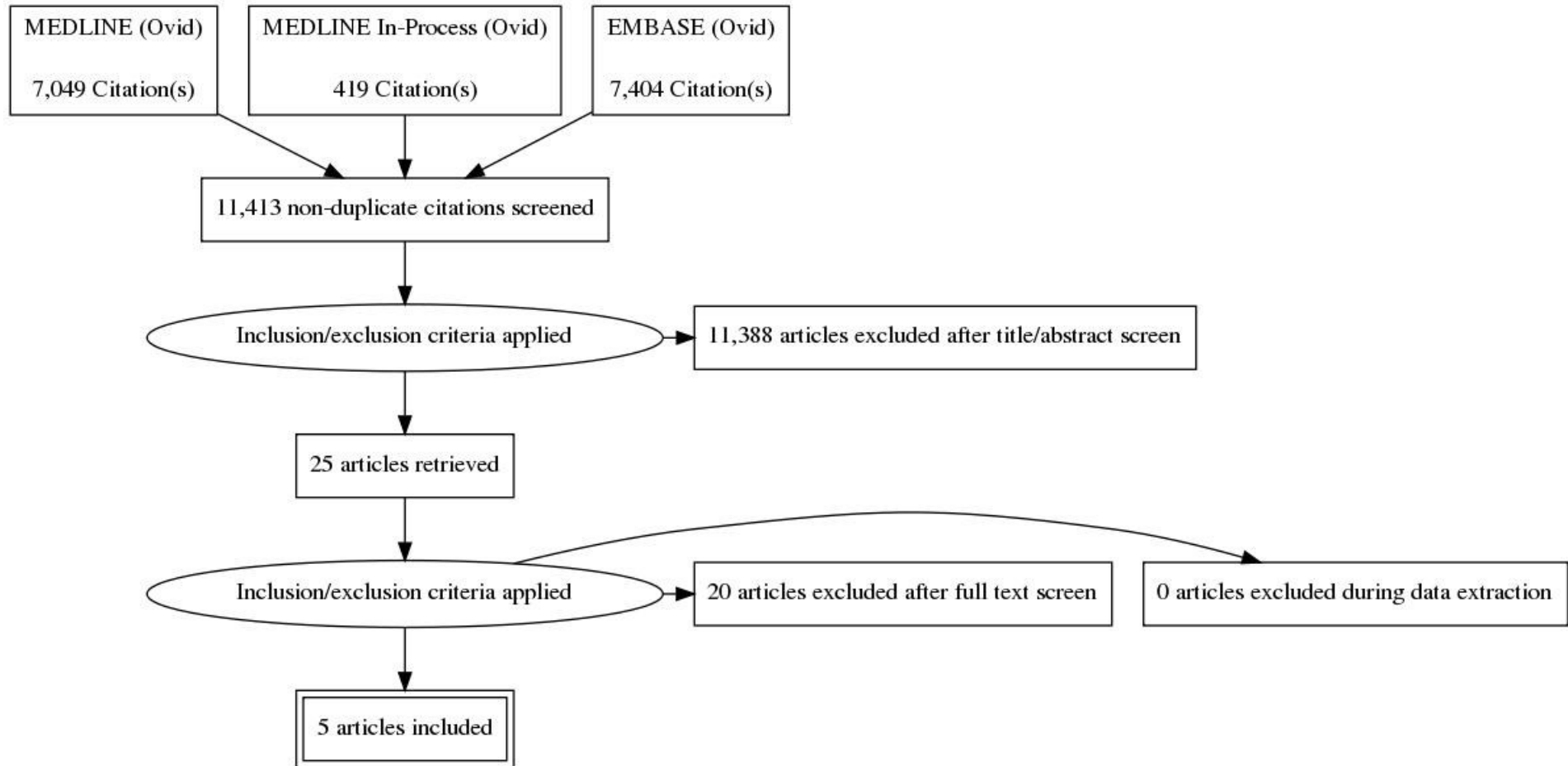
- What is the comparative effectiveness of different referral strategies in diagnosing spondyloarthritis?



L.1.3 Obstacles to prompt diagnosis

Review question 3

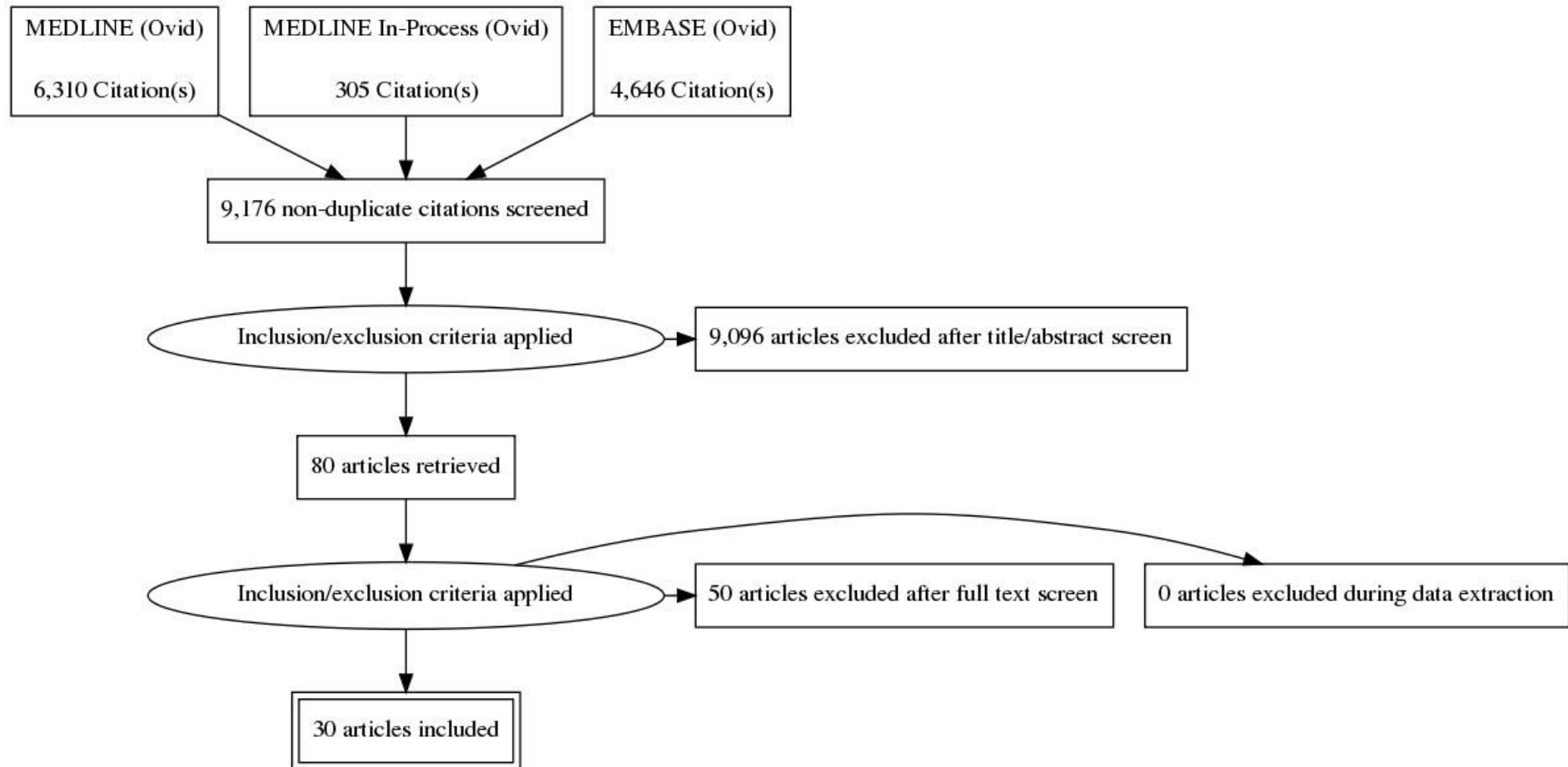
What are the obstacles to a prompt diagnosis of spondyloarthritis?



L.1.4 Blood tests for spondyloarthritis

Review questions 7-9

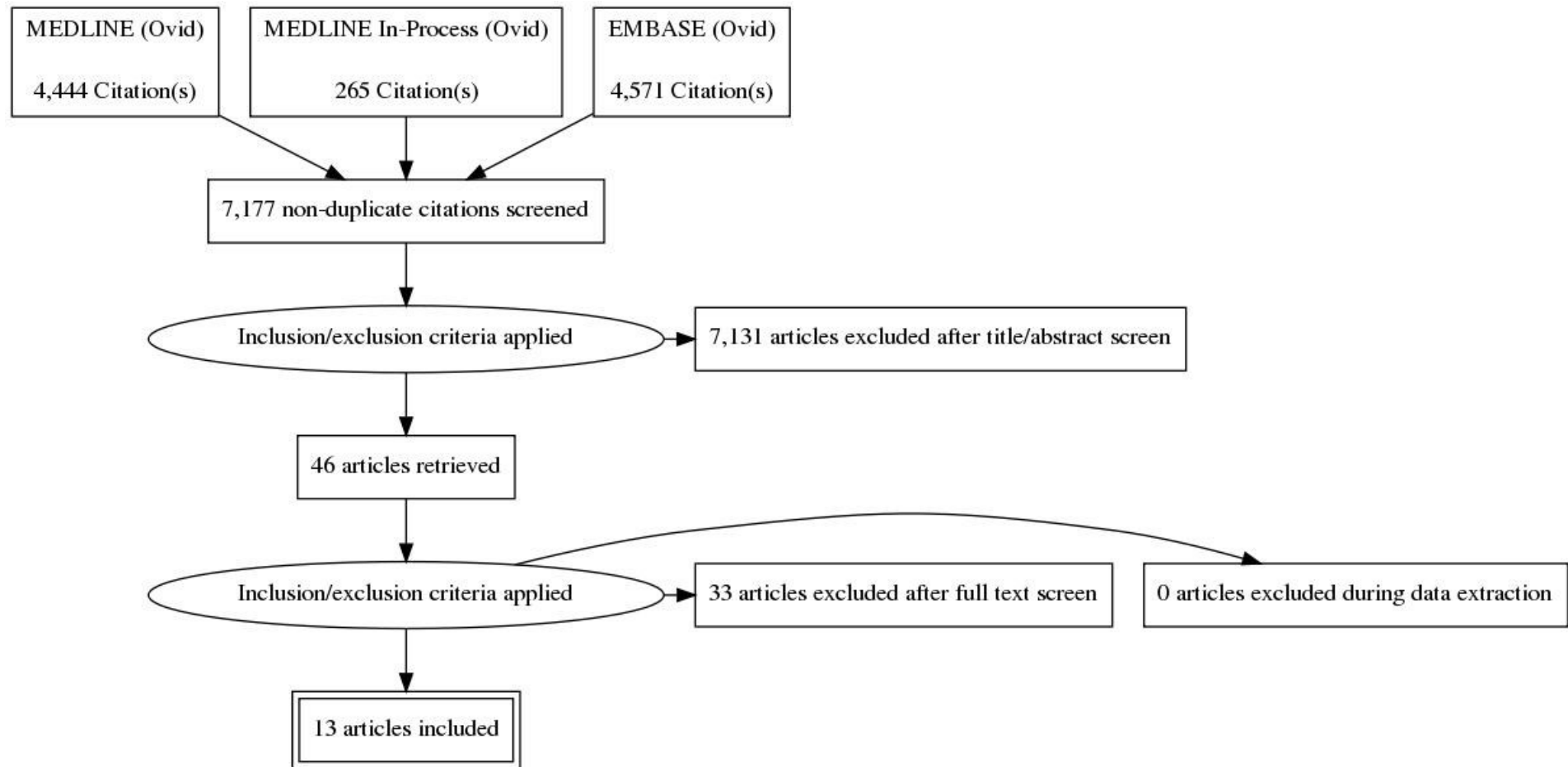
- What is the diagnostic utility of a HLA B27 test for investigating suspected spondyloarthritis?
- What is the diagnostic utility of an erythrocyte sedimentation rate test for investigating suspected spondyloarthritis?
- What is the diagnostic utility of a C-reactive protein test for investigating suspected spondyloarthritis?



L.1.5 Imaging for diagnosis of spondyloarthritis

Review question 10

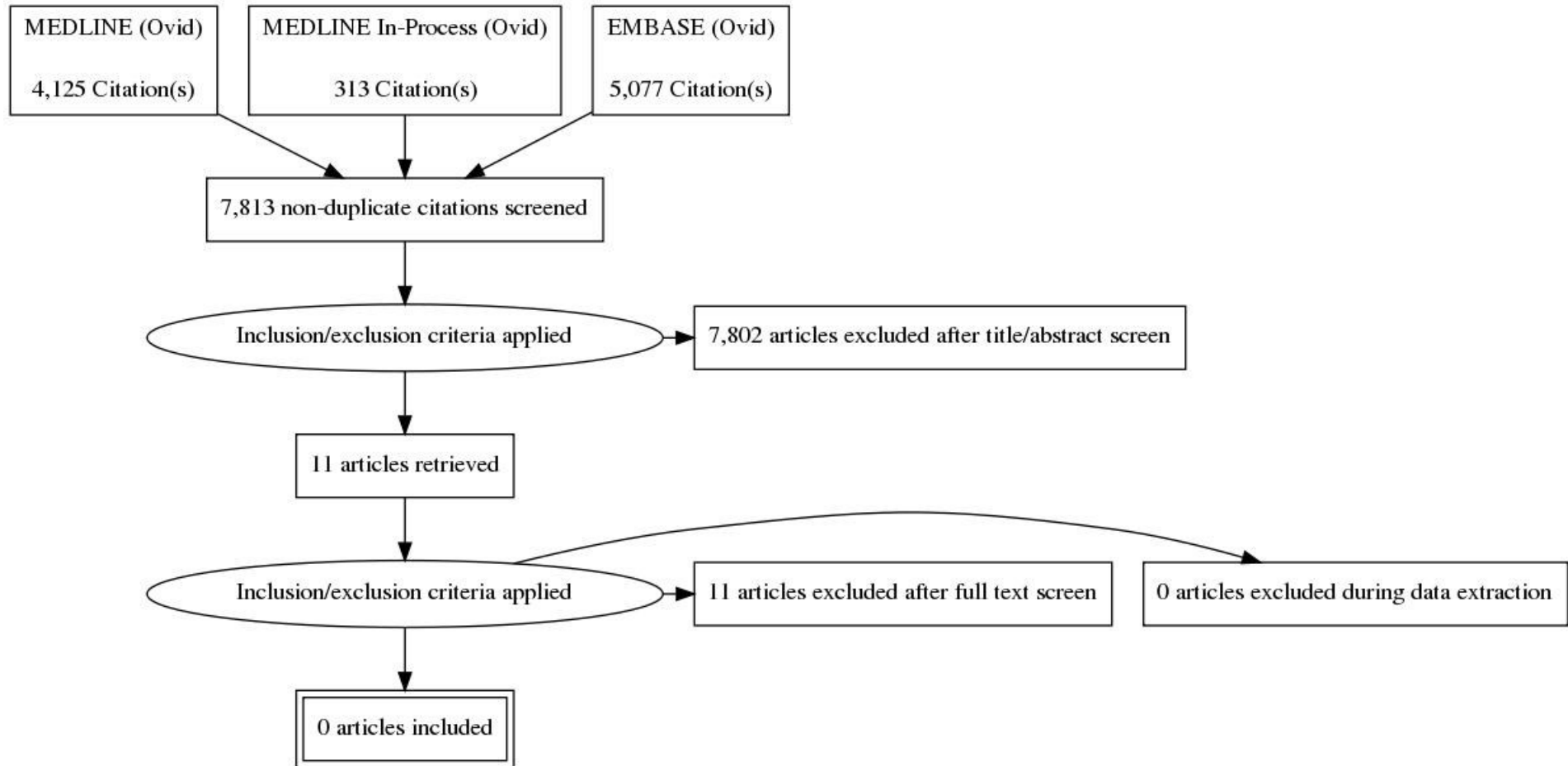
- What is the diagnostic utility of imaging (alone or in sequence) for investigating suspected spondyloarthritis?



L.1.6 Information gathering to improve early diagnosis

Review question 5

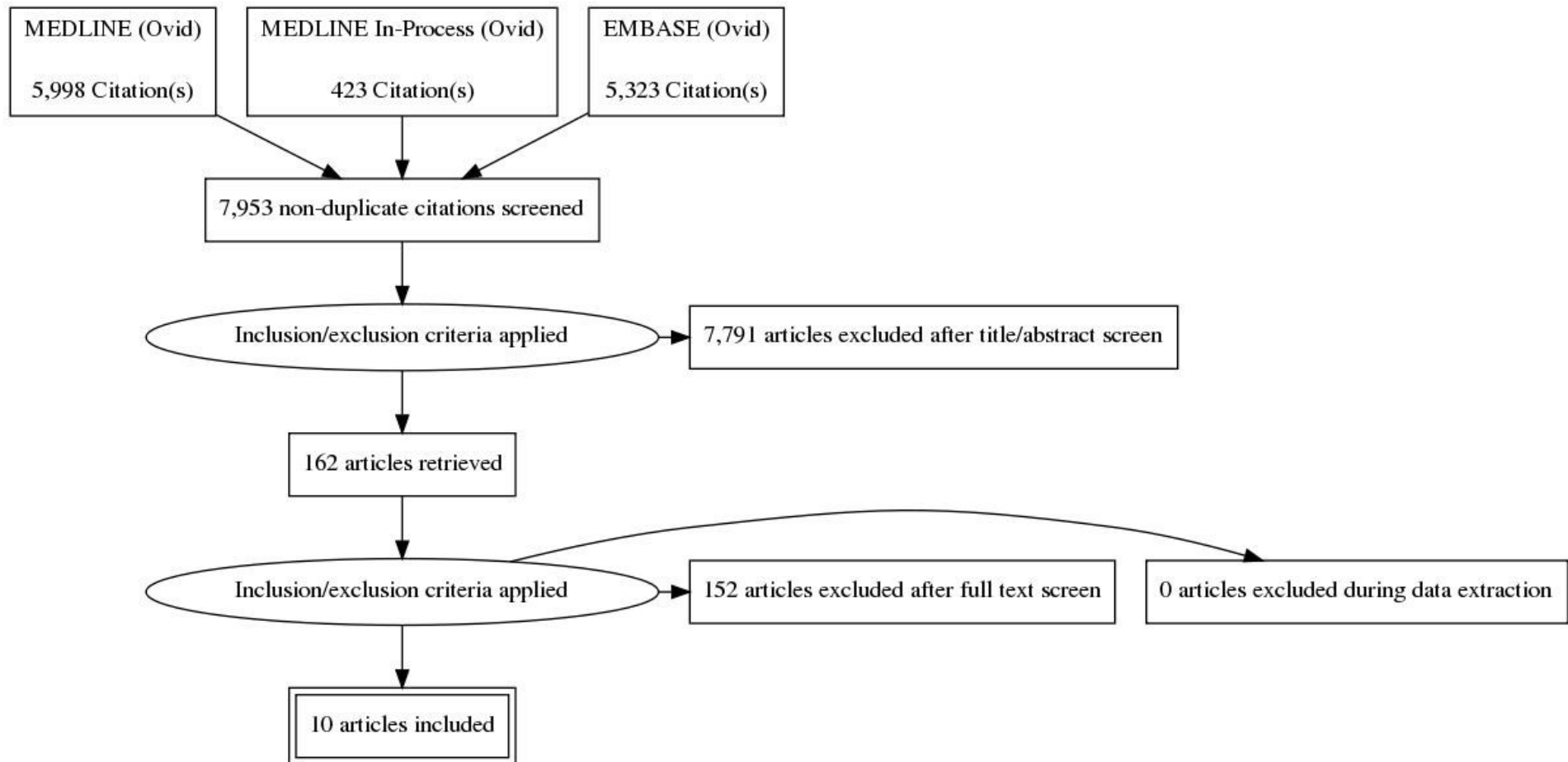
- What is the usefulness of information gathering (for example family history, self-report questionnaires, and screening criteria) in improving early diagnosis of spondyloarthritis?



L.1.7 Diagnostic risk scores and models

Review question 4

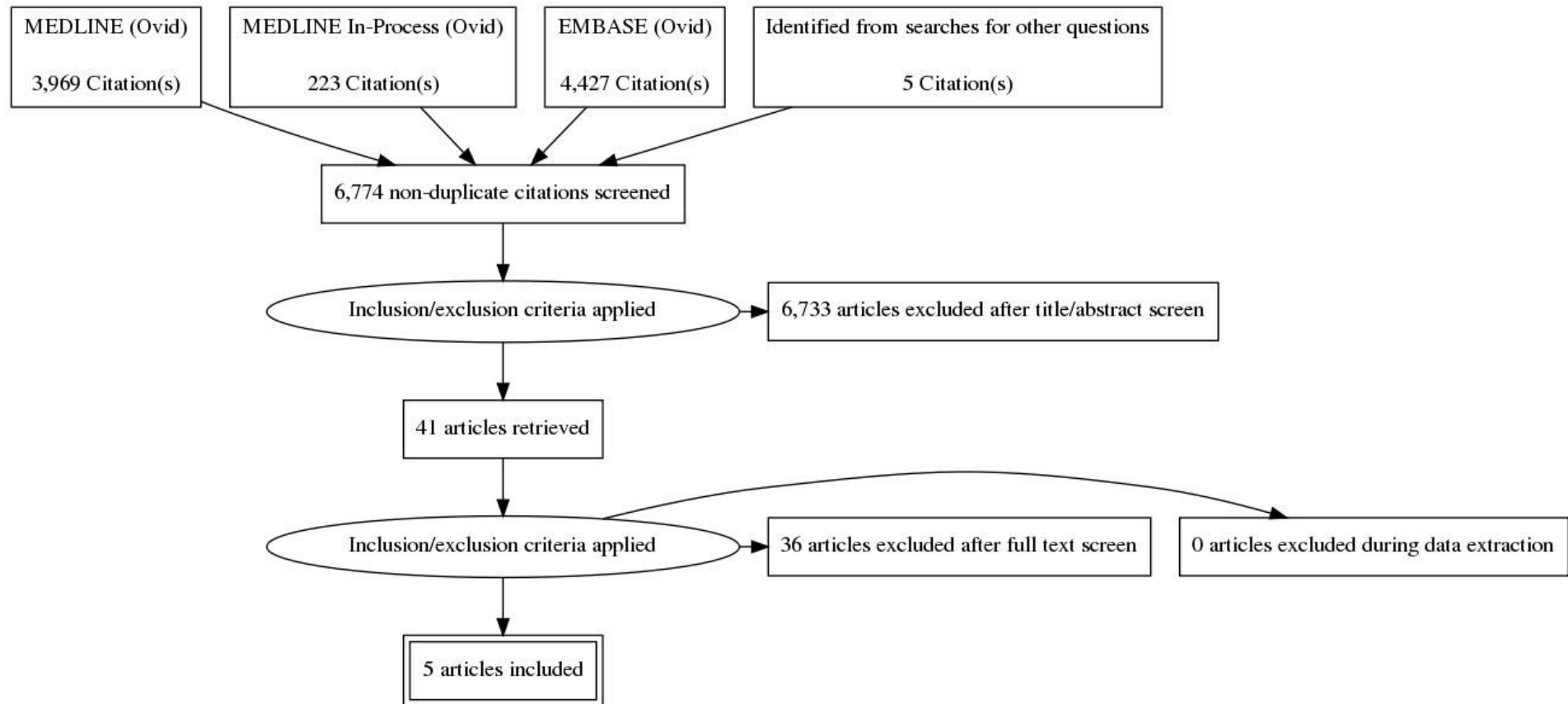
What is the diagnostic utility of a risk assessment score for identifying spondyloarthritis?



L.1.8 Microbiology testing in Reactive Arthritis

Review question 11

- What is the diagnostic utility of testing for infection such as salmonella, shigella, yersinia, campylobacter and chlamydia in cases of suspected reactive arthritis?

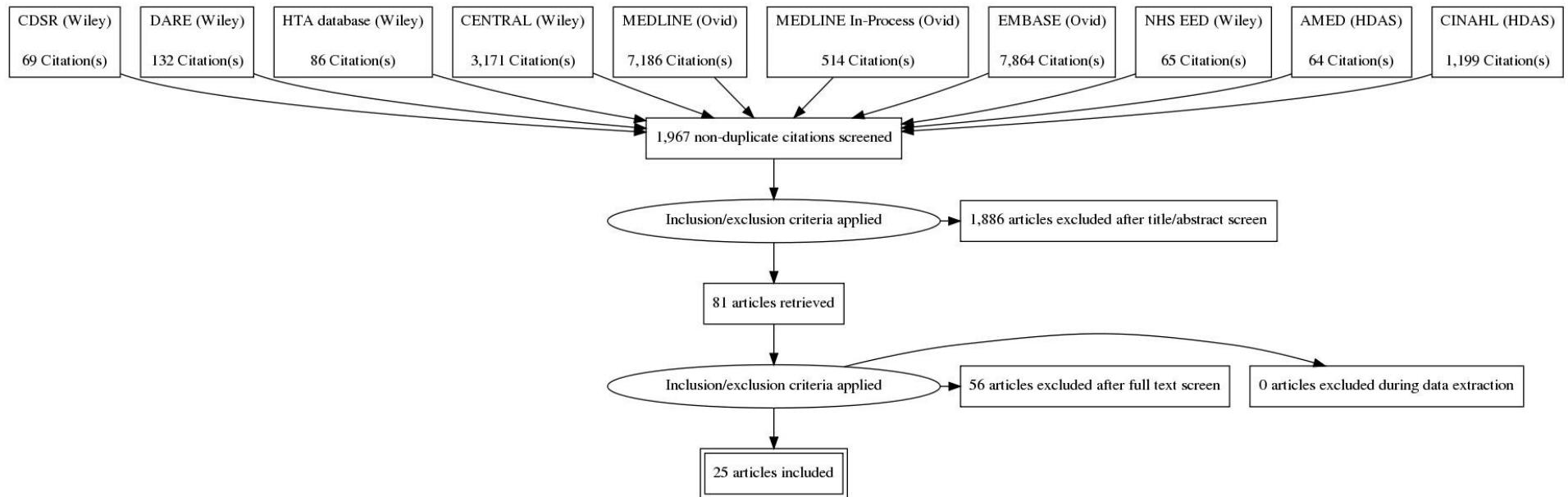


L.2 Pharmacological management

L.2.1 Pharmacological interventions for axial symptoms of spondyloarthritis

Review question 20

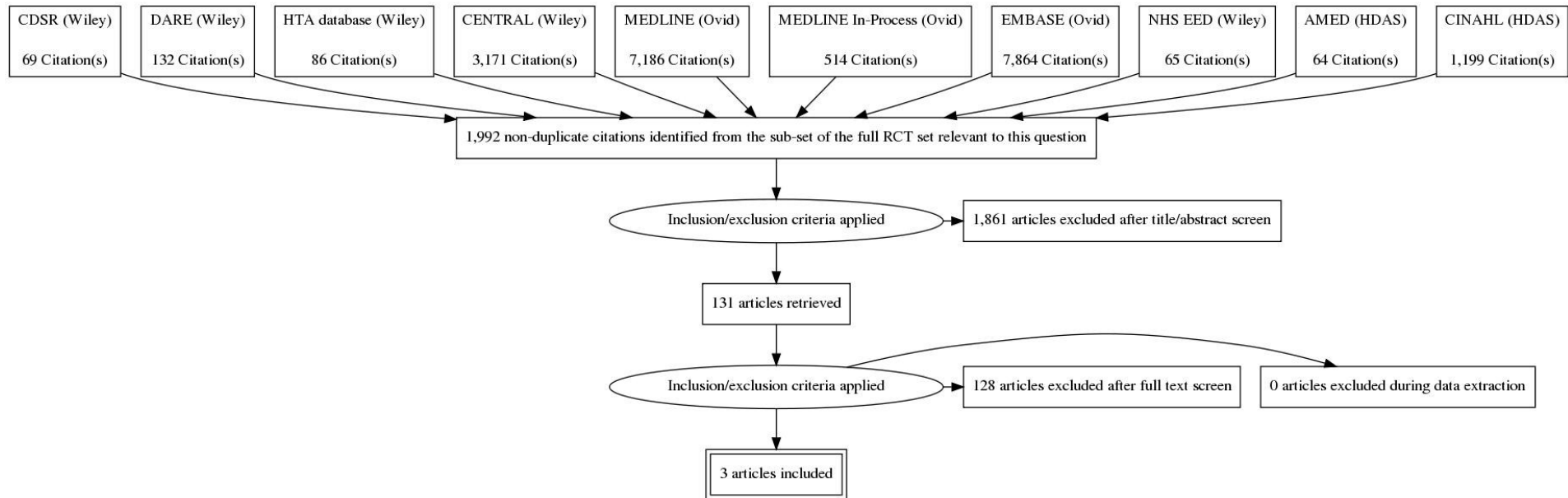
- What is the comparative effectiveness of non-steroidal anti-inflammatory drugs (NSAIDs) for management of axial symptoms of spondyloarthritis?



L.2.2 Pharmacological management of peripheral spondyloarthritis

Review question 21

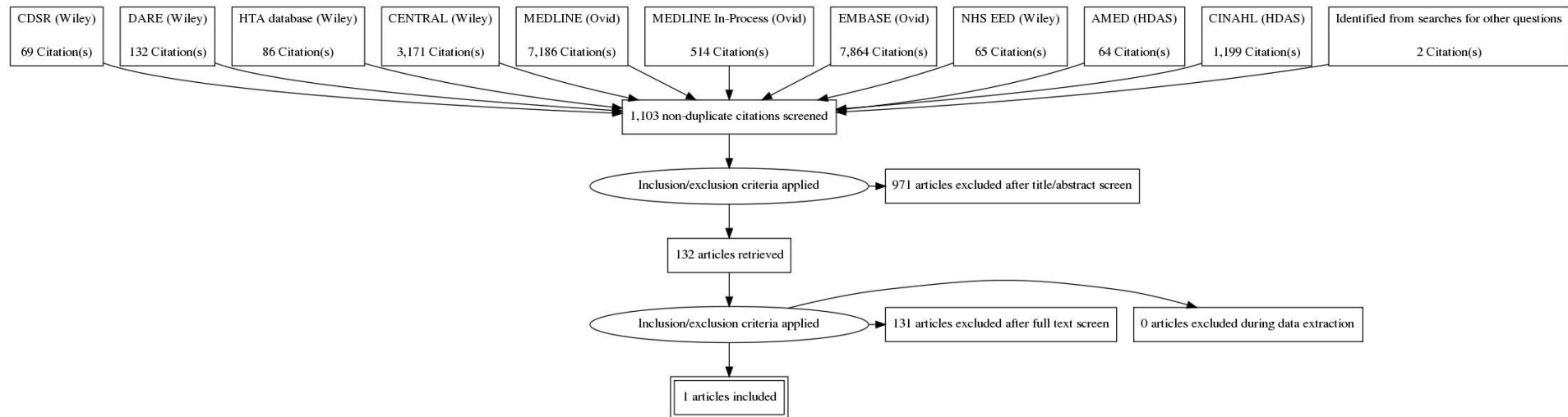
- What is the comparative effectiveness of the following pharmacological interventions for the management of peripheral spondyloarthritis:
 - corticosteroids
 - non-steroidal anti-inflammatory drugs (NSAIDs)
 - standard disease-modifying anti-rheumatic drugs (DMARDs)?



L.2.3 Switching or augmenting pharmacological interventions for spondyloarthritis

Review question 23

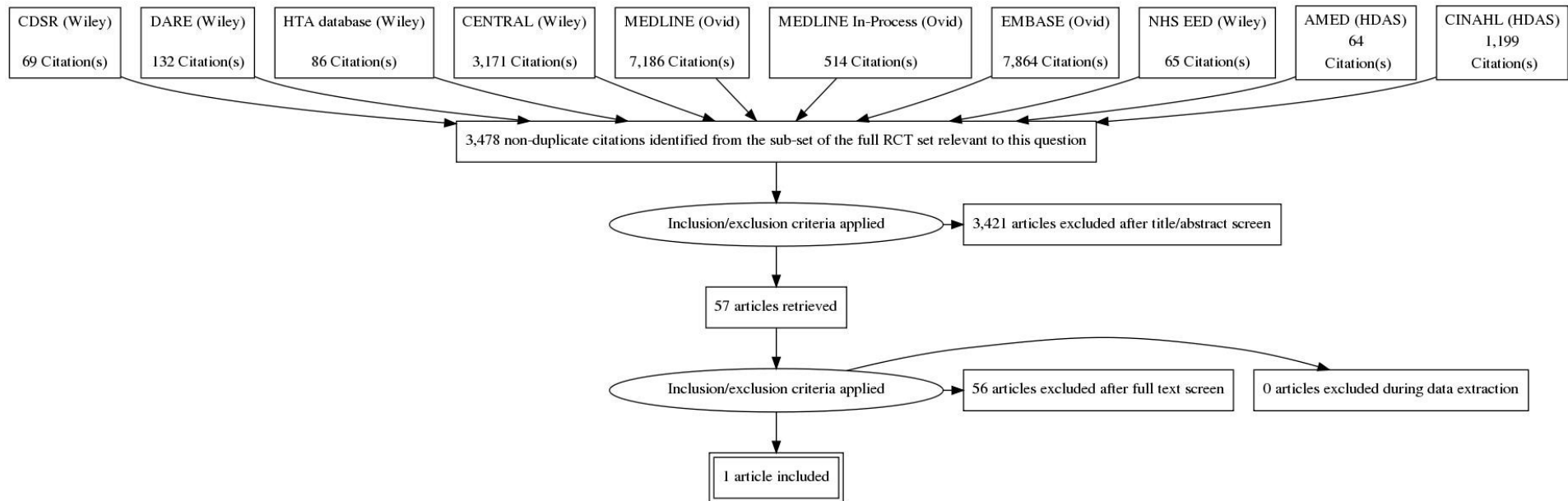
- When a first-line treatment has failed, what is the effectiveness of the following for managing spondyloarthritis:
 - switching to a different pharmacological intervention?
 - augmenting with a second pharmacological intervention?



L.2.4 Biological DMARDs for spondyloarthritis

Review questions 24, 25, and 26

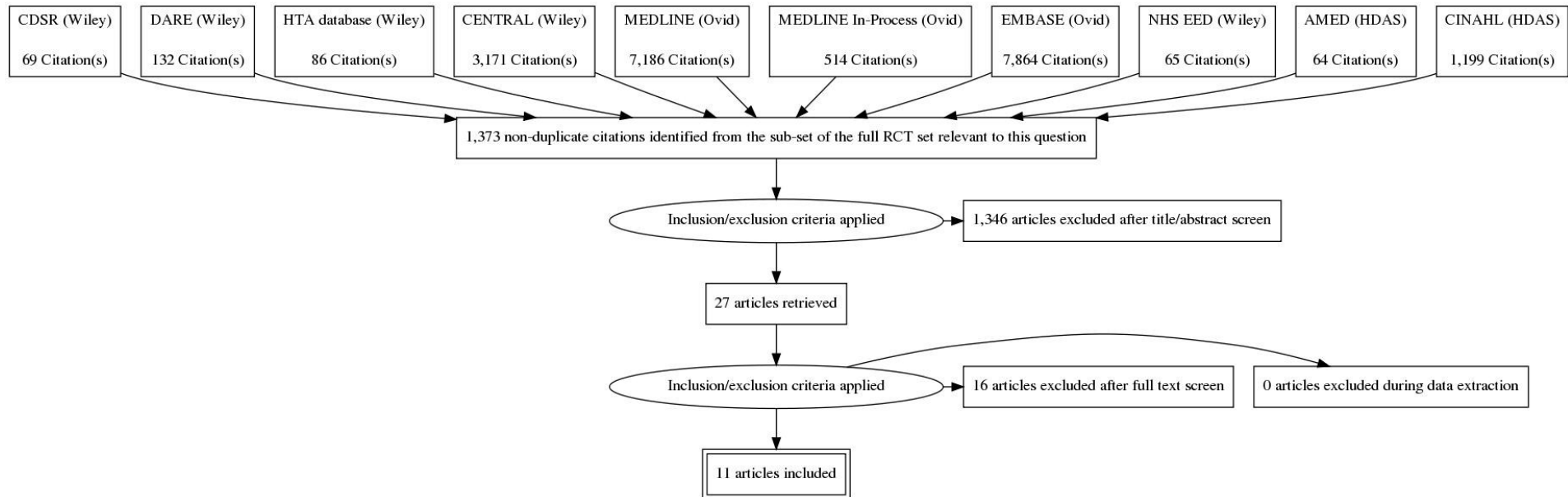
- What is the effectiveness of systemic biological disease-modifying anti-rheumatic drugs for managing symptoms of enteropathic arthritis?
- What is the effectiveness of systemic biological disease-modifying anti-rheumatic drugs for managing symptoms of reactive arthritis?
- What is the effectiveness of systemic biological disease-modifying anti-rheumatic drugs for managing symptoms of undifferentiated spondyloarthritis, excluding non-radiographic ankylosing spondylitis?



L.2.5 Long-term antibiotics for reactive arthritis

Review question 19

- What is the effectiveness of long-term (4 weeks or longer) treatment with antibiotics for first-line management of reactive arthritis compared with standard treatment?

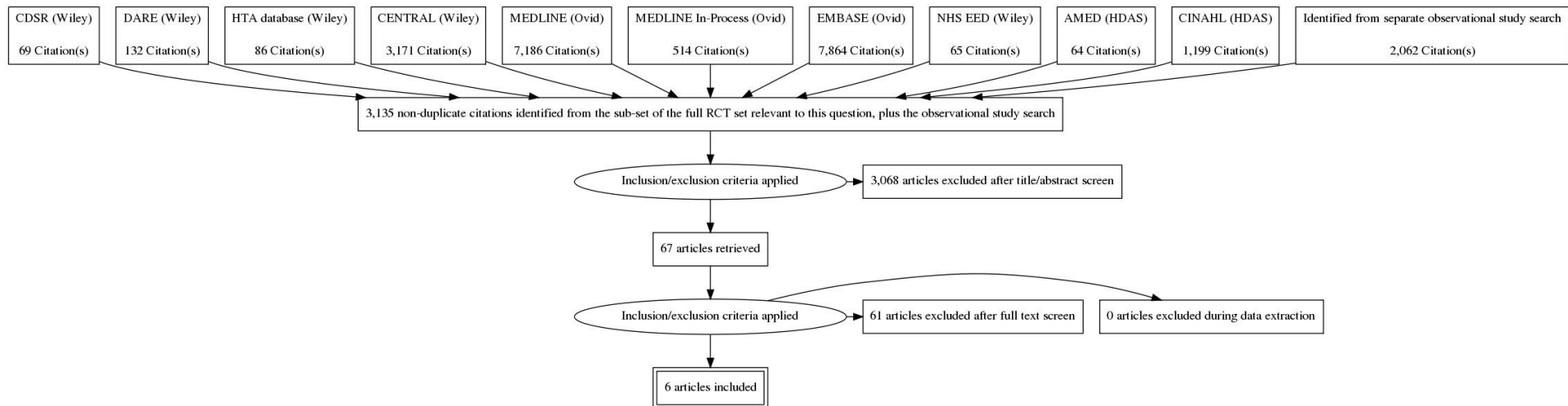


L.3 Non-pharmacological management

L.3.1 Manual therapies for spondyloarthritis

Review question 14

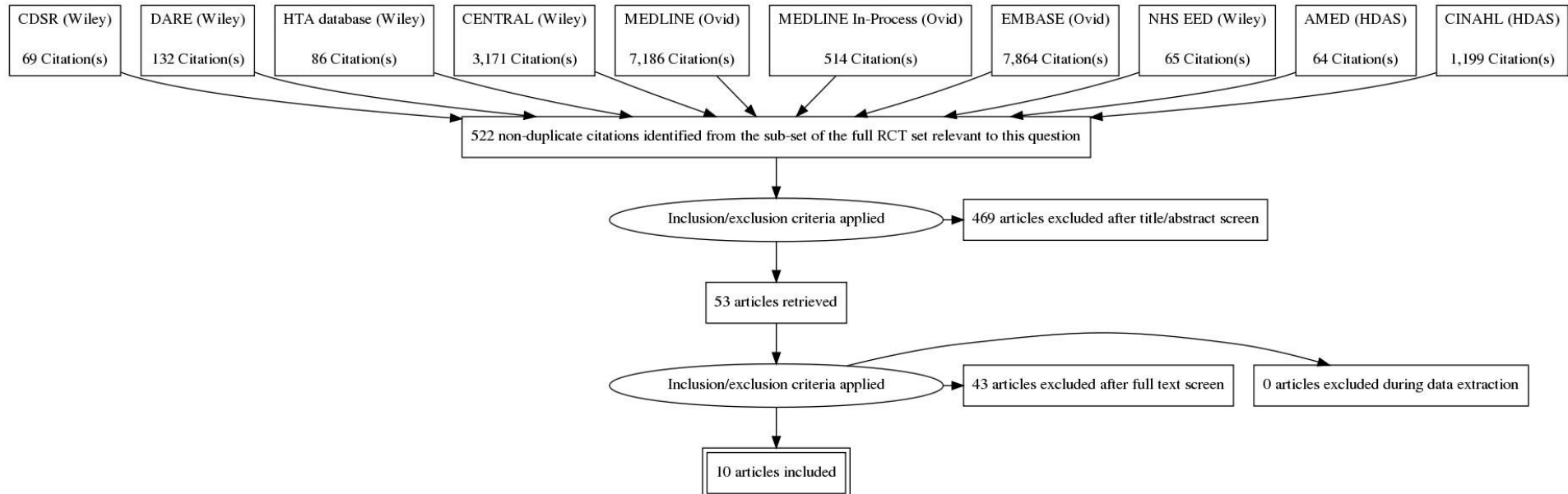
- What is the effectiveness of manual therapies compared with standard care for managing spondyloarthritis?



L.3.2 Exercise for spondyloarthritis

Review question 15

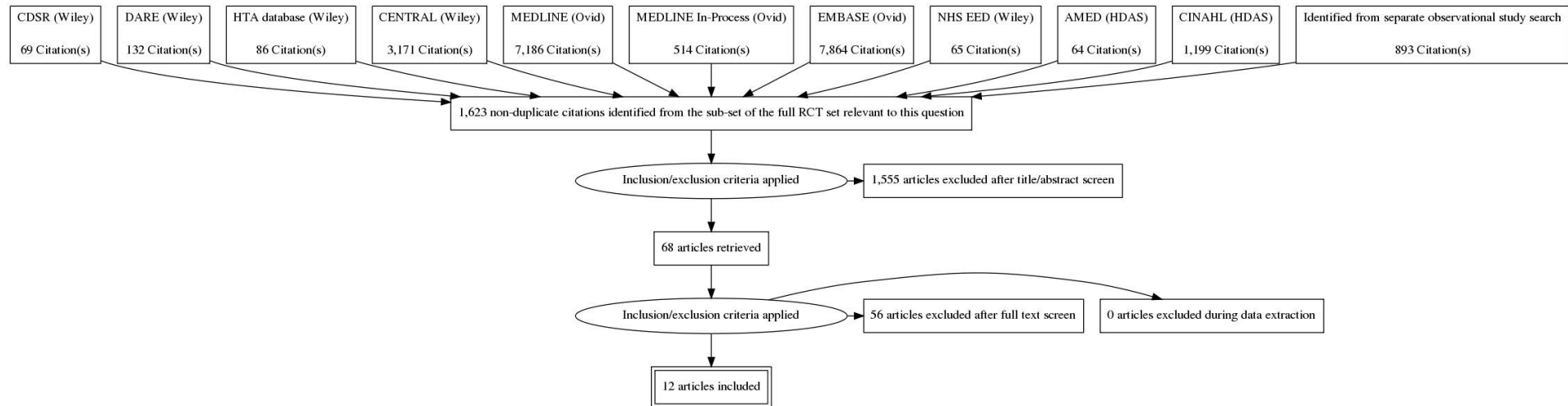
- What is the effectiveness of structured exercise compared with standard care for managing spondyloarthritis?



L.3.3 Hydrotherapy for spondyloarthritis

Review question 16

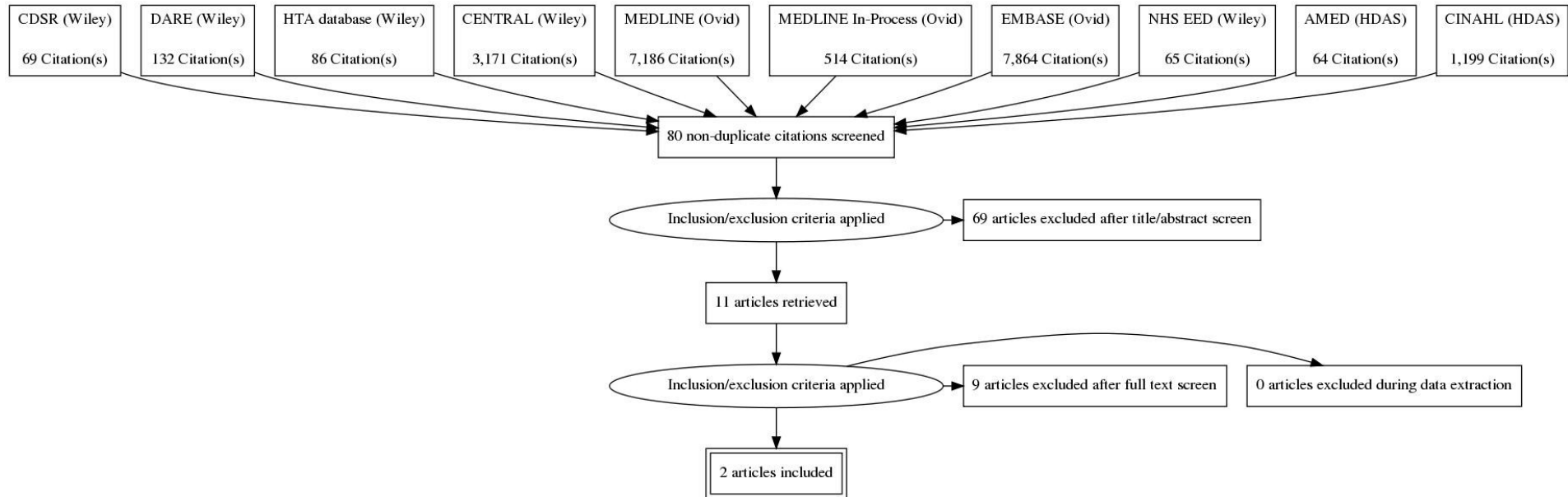
- What is the effectiveness of hydrotherapy compared with standard care for managing spondyloarthritis?



L.3.4 Acupuncture for spondyloarthritis

Review question 17

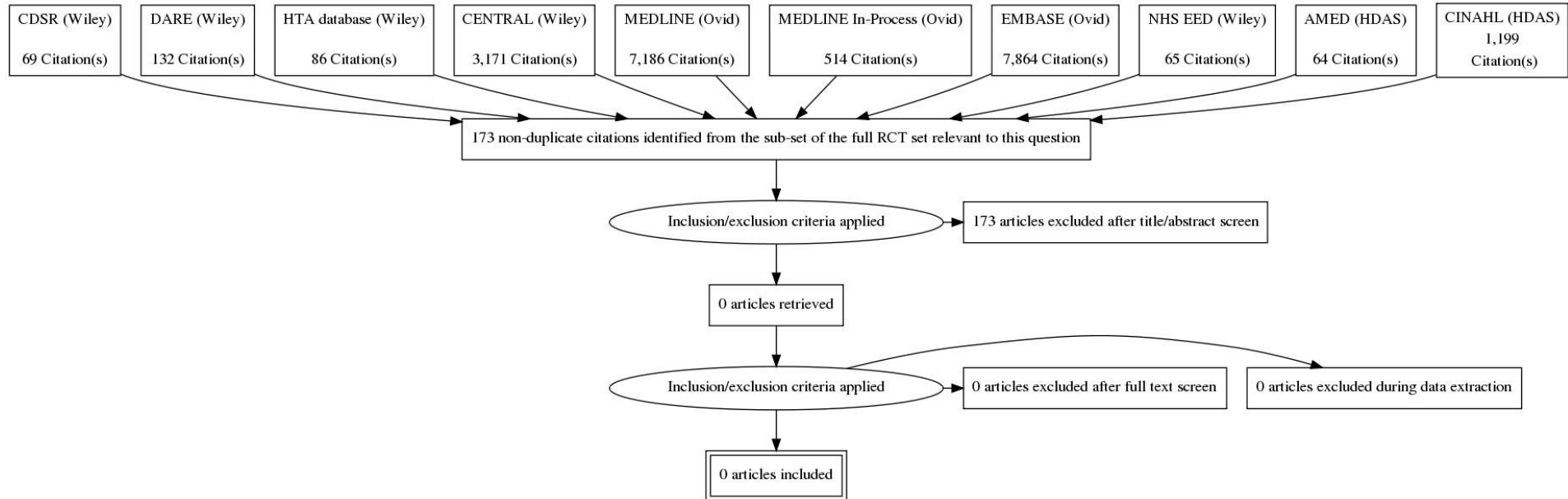
- What is the effectiveness of acupuncture compared with sham acupuncture and standard care for managing spondyloarthritis?



L.3.5 Physical aids for spondyloarthritis

Review question 18

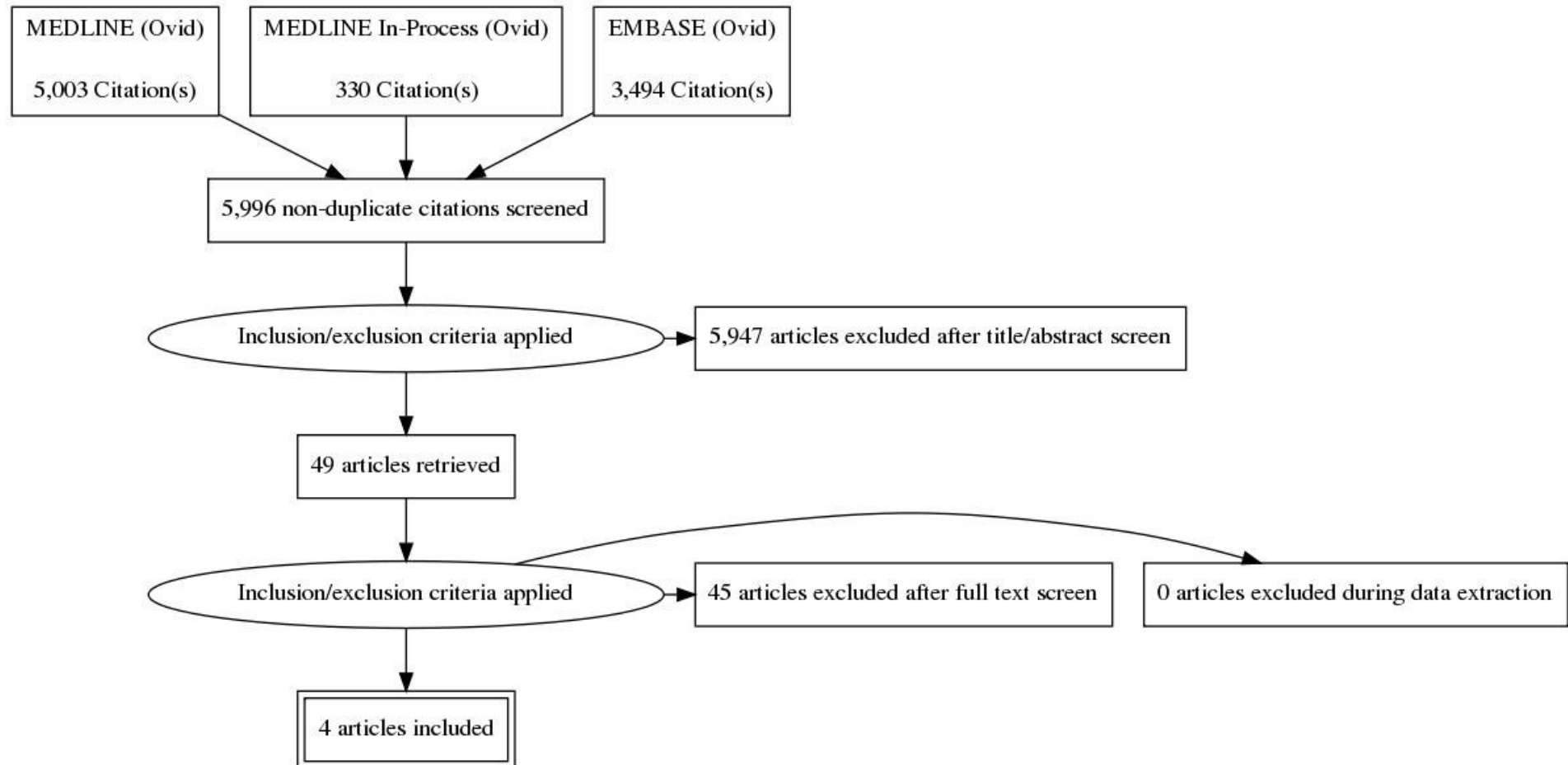
- What is the effectiveness of physical aids (for example, braces) compared with standard care for managing spondyloarthritis?



L.4 Surgical Interventions

Review questions 34 and 35

- What factors predict clinical improvement after spinal surgery (including osteotomy and fusion) in people with axial inflammation?
- What factors predict clinical improvement after joint replacement surgery?



L.5 Organisation of care and long-term monitoring

L.5.1 Transition to adult services for young people with spondyloarthritis

Review question 13

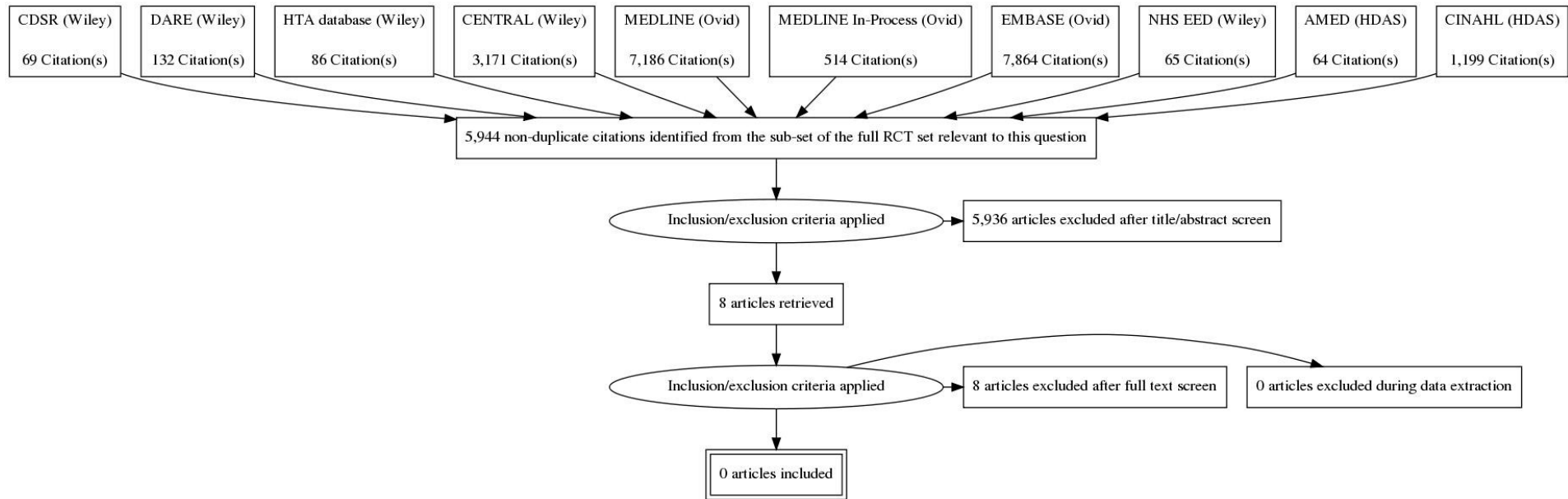
- How should transition from specialist paediatric services to specialist adult rheumatology services be managed for young people between the ages of 16 and 18?

None

L.5.2 Monitoring of pharmacological interventions used in spondyloarthritis

Review question 22

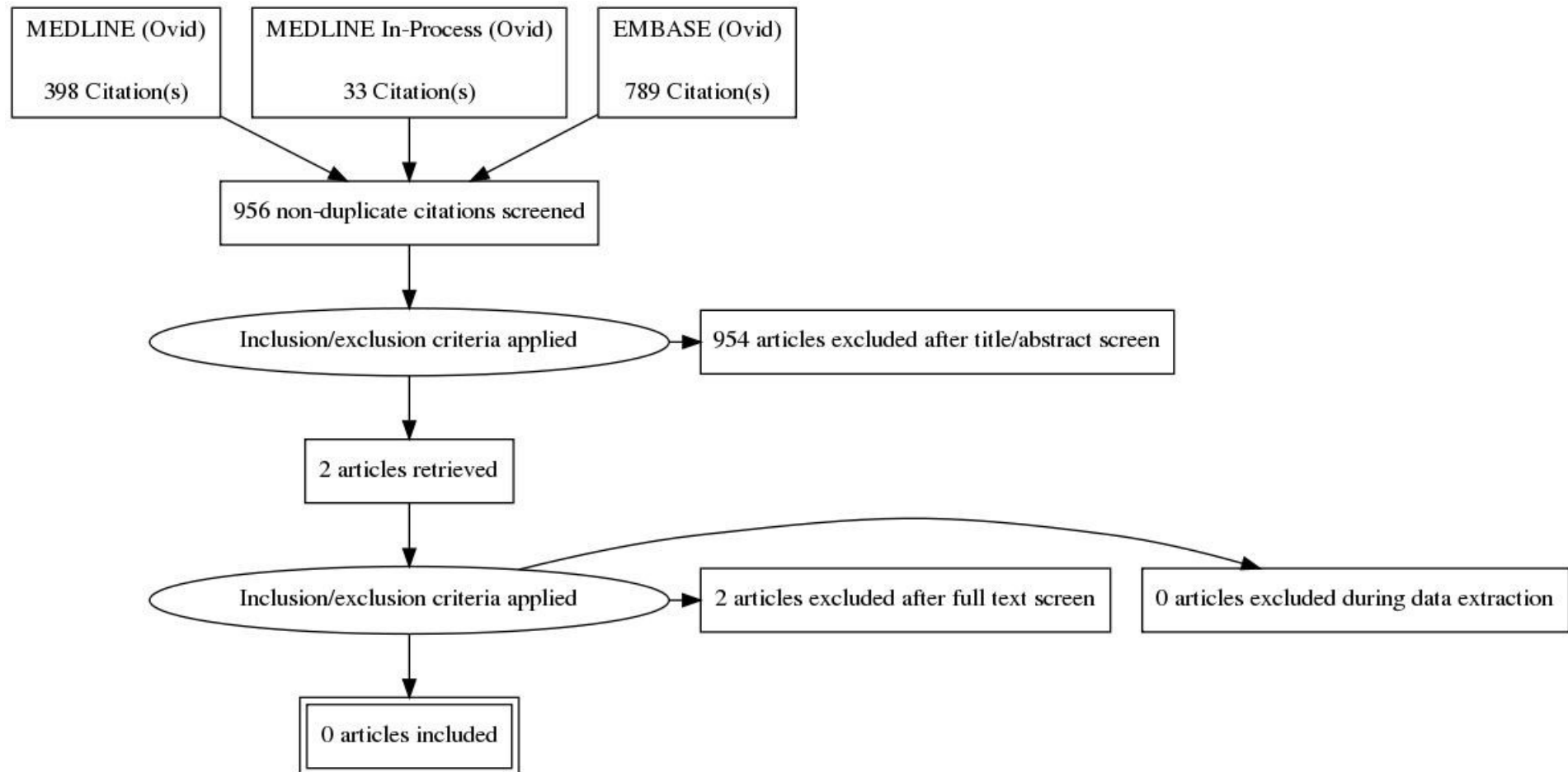
- What is the usefulness of direct access to specialist care, compared with initial primary care access followed by specialist rheumatological care, in the management of flare episodes?



L.5.3 Care setting for management of flare episodes

Review question 29

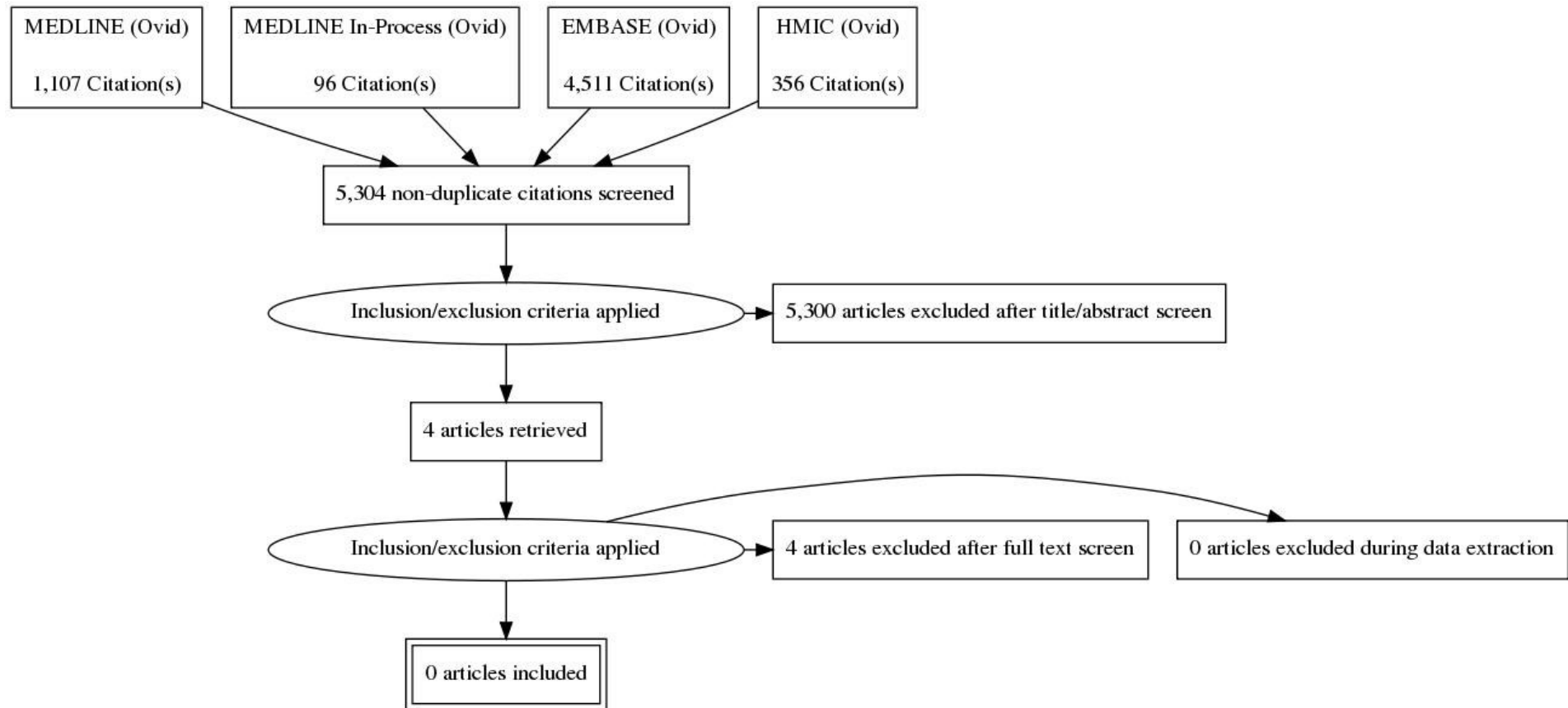
- What is the usefulness of direct access to specialist care, compared with initial primary care access followed by specialist rheumatological care, in the management of flare episodes?



L.5.4 Care setting for long-term management/cross-speciality care

Review questions 30 and 31

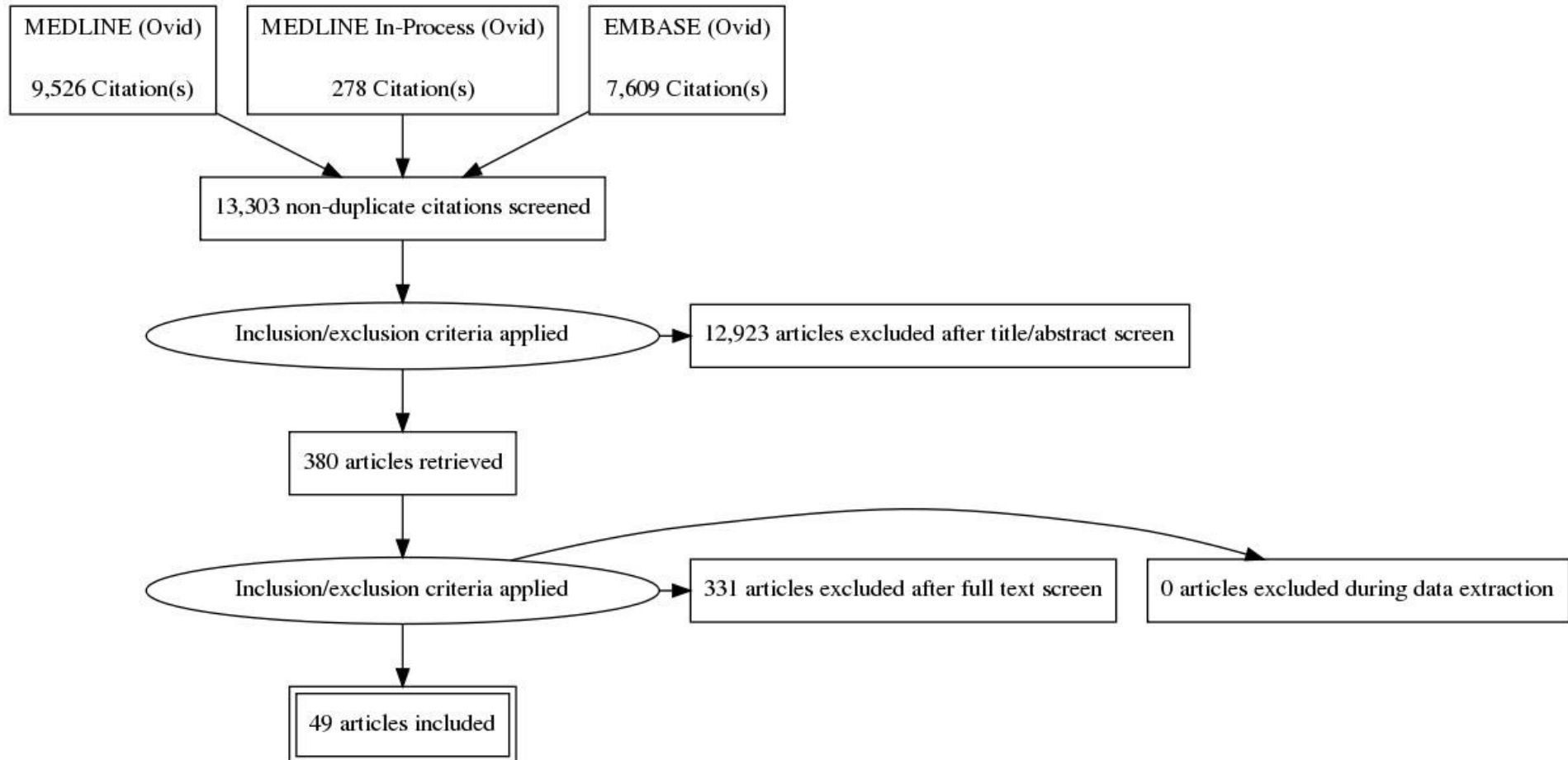
- What is the effectiveness of specialist-led long-term management of spondyloarthritis compared with primary-care-led long-term management?
- How should cross-speciality care for people with spondyloarthritis be organised?



L.5.5 Complications of spondyloarthritis

Review questions 32 and 32

- What are the complications associated with spondyloarthritis?
- What are the complications associated with treatments for spondyloarthritis?

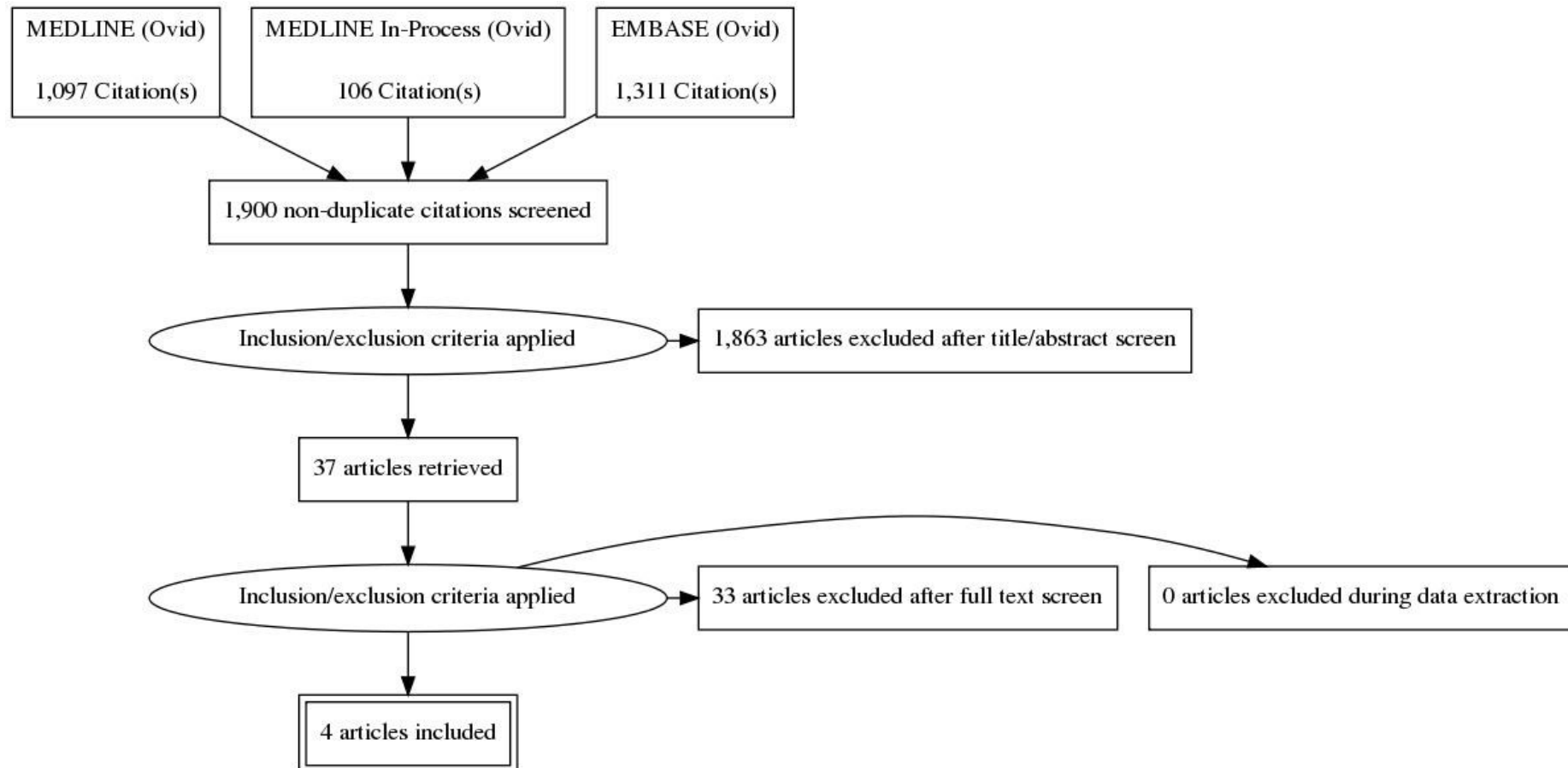


L.6 Information for people with spondyloarthritis

L.6.1 Information for people with spondyloarthritis

Review question 27

- What information on treatment, long-term complications and self-management do young people and adults with spondyloarthritis find useful?



L.6.2 Information and education for flare management in spondyloarthritis

Review question 28

- What is the effectiveness of information and education in the management of flare episodes?

