

# Oesophago-gastric cancer: assessment and management in adults

## Appendix K

*Clinical Guideline*

*Clinical article selection*

*12 May 2017*

*Draft for Consultation*

*Developed by the National Guideline Alliance, hosted  
by the Royal College of Obstetricians and  
Gynaecologists*



**Disclaimer**

Healthcare professionals are expected to take NICE clinical guidelines fully into account when exercising their clinical judgement. However, the guidance does not override the responsibility of healthcare professionals to make decisions appropriate to the circumstances of each patient, in consultation with the patient and/or their guardian or carer.

**Copyright**

© National Institute for Health and Care Excellence 2017

ISBN:

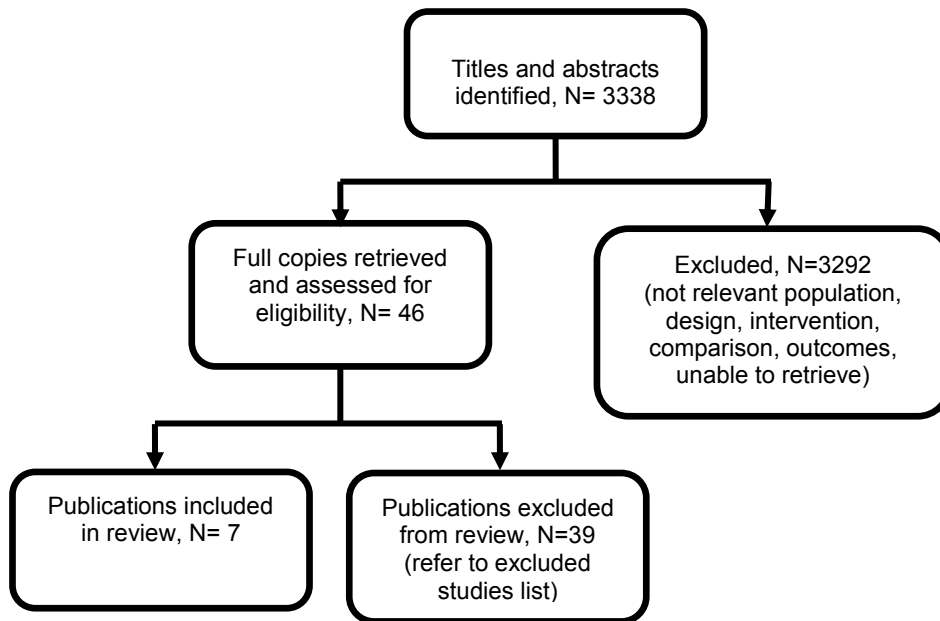
# Contents

Appendix K: Included studies.....	5
K.1 Radical treatment .....	5
K.2 Palliative management .....	6
K.3 MDT .....	6
K.4 Surgical services .....	7
K.5 Staging investigations.....	8
K.6 Staging investigations.....	9
K.7 HER2 testing in adenocarcinoma .....	10
K.8 T1N0 oesophageal cancer.....	11
K.9 Surgical treatment of oesophageal cancer.....	12
K.10 Lymph node dissection in oesophageal and gastric cancer.....	13
K.11 Localised oesophageal and gastro-oesophageal junctional adenocarcinoma .....	14
K.12 Gastric Cancer .....	14
K.13 Squamous cell carcinoma of the oesophagus .....	15
K.14 Non-metastatic oesophageal cancer not suitable for surgery .....	15
K.15 First-line palliative chemotherapy .....	16
K.16 Second-line palliative chemotherapy.....	17
K.17 Luminal obstruction.....	17
K.18 Curative treatment.....	18
K.19 Palliative care.....	19
K.20 Routine follow-up .....	19

## Appendix K: Included studies

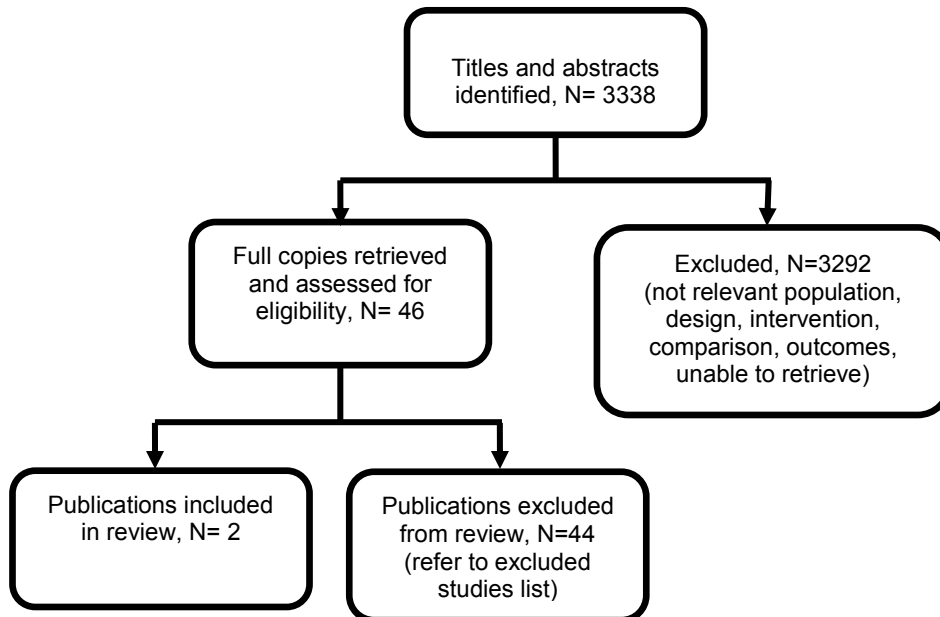
### K.1 Radical treatment

What are the specific information and support needs before and after treatment for adults with oesophago-gastric cancer who are suitable for radical treatment and their carers?



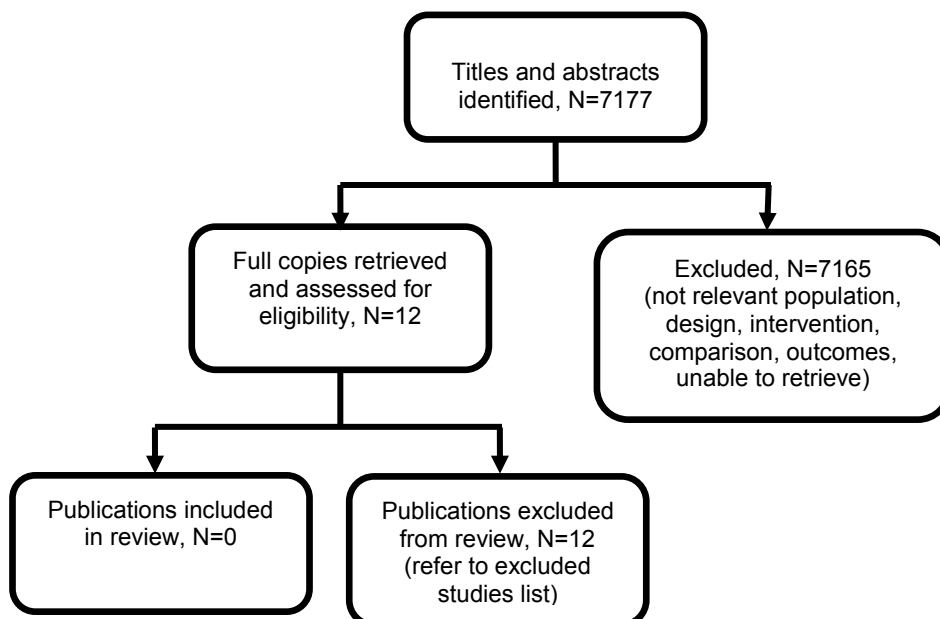
## K.2 Palliative management

What are the specific information and support needs of adults with oesophago-gastric cancer who are suitable for palliative treatments and care only?



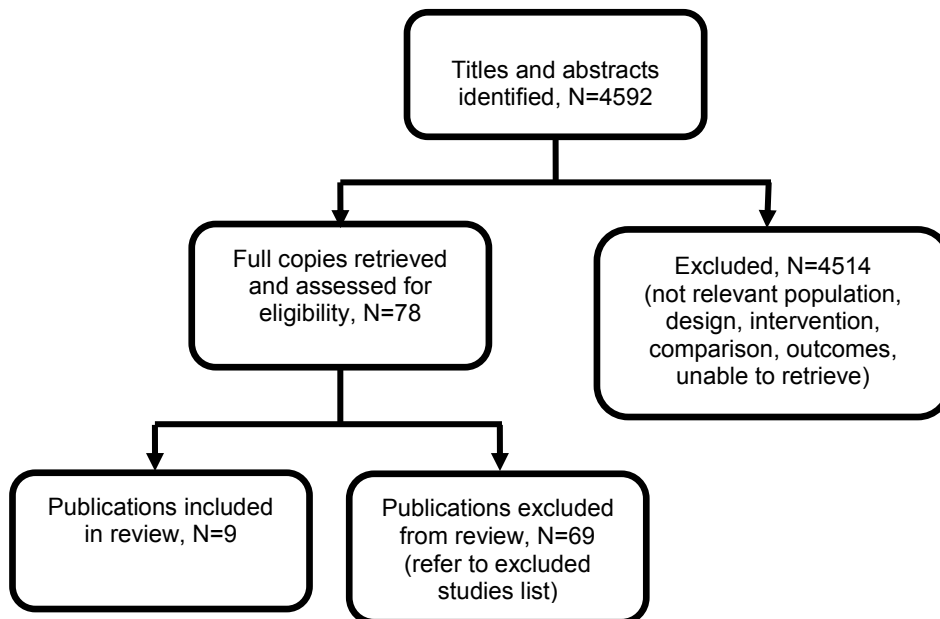
## K.3 MDT

What is the most effective organisation of local and specialist MDT services for adults with oesophago-gastric cancer?



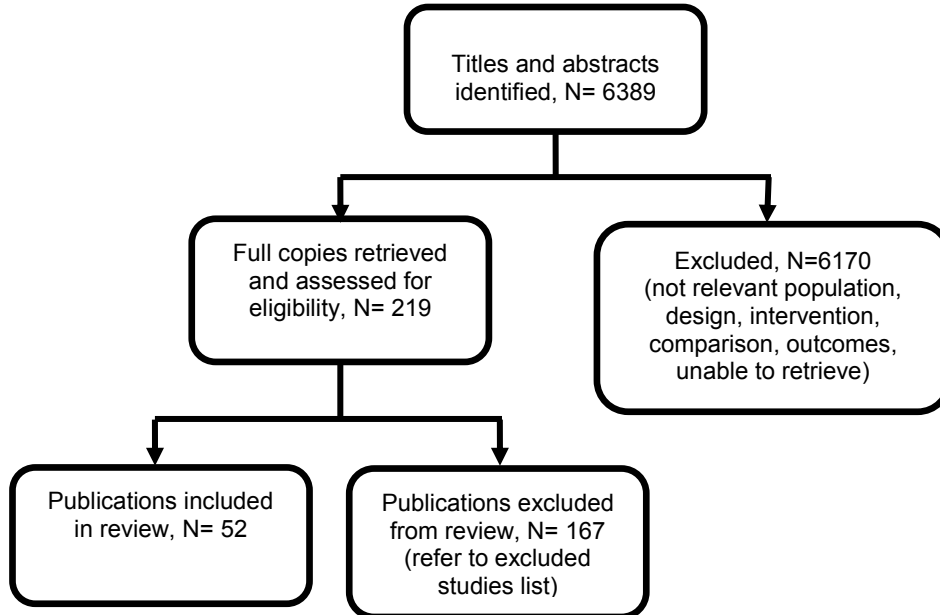
## K.4 Surgical services

What is the optimal provision and organisation of surgical services for people with oesophago-gastric cancer?



## K.5 Staging investigations

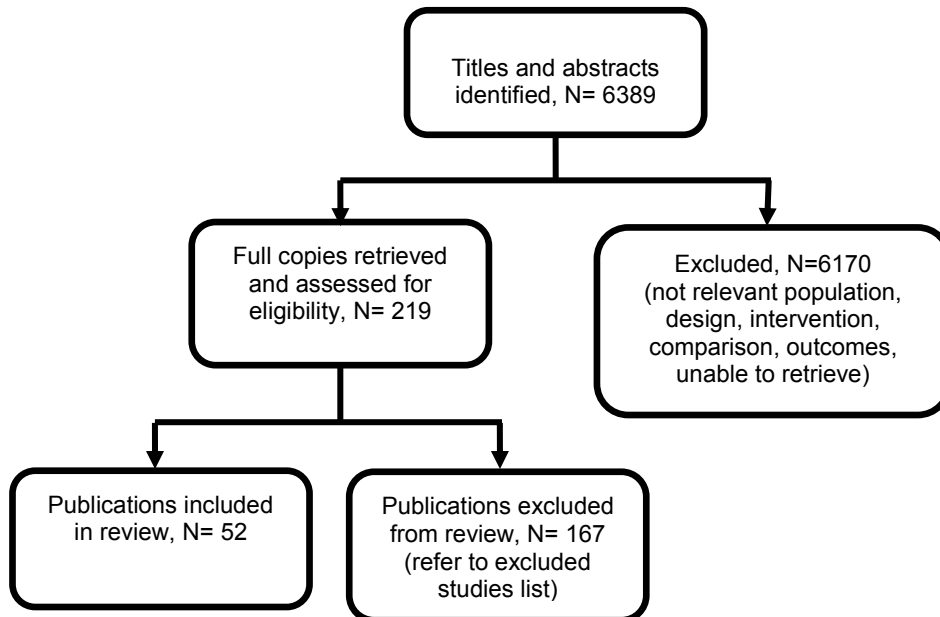
**What are the optimal staging investigations to determine suitability for curative treatment of oesophageal or gastro-oesophageal junctional cancer after diagnosis with endoscopy and whole-body CT scan?**





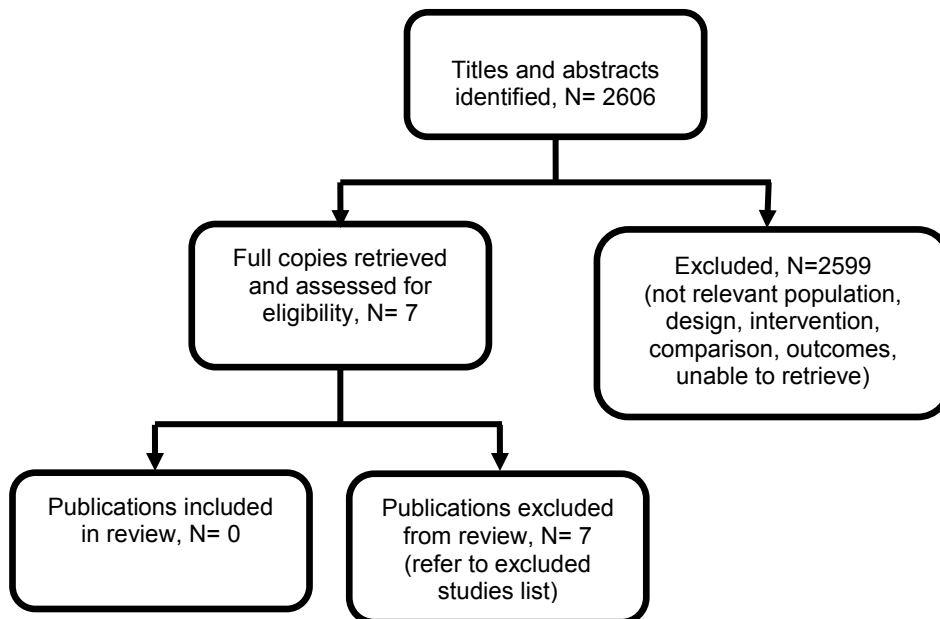
## K.6 Staging investigations

**What are the optimal staging investigations to determine suitability for curative treatment of gastric cancer after diagnosis with endoscopy and whole-body CT scan?**



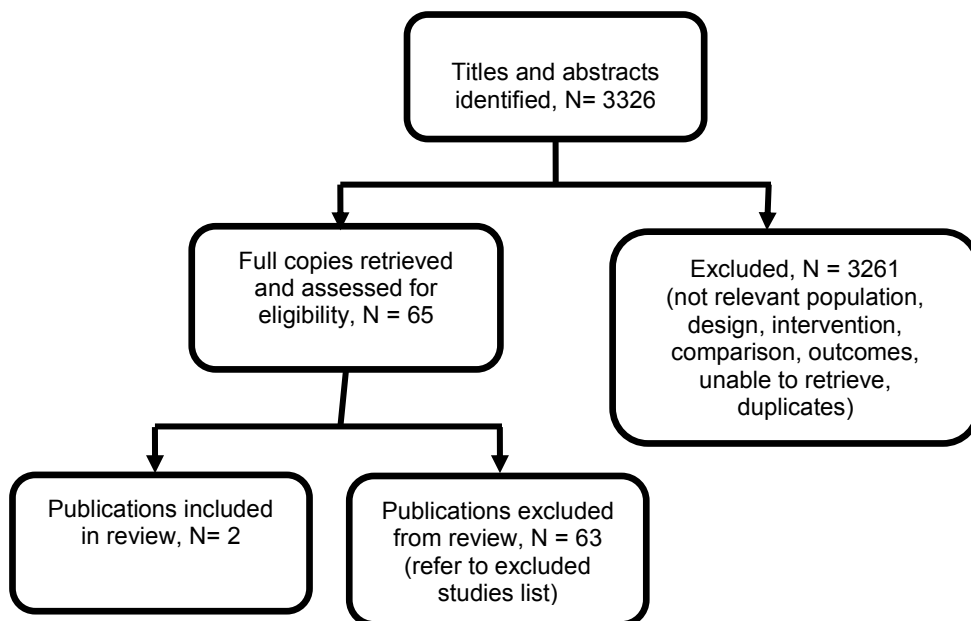
## K.7 HER2 testing in adenocarcinoma

Which people with adenocarcinoma of the stomach and oesophagus should have their tumours HER2 tested?



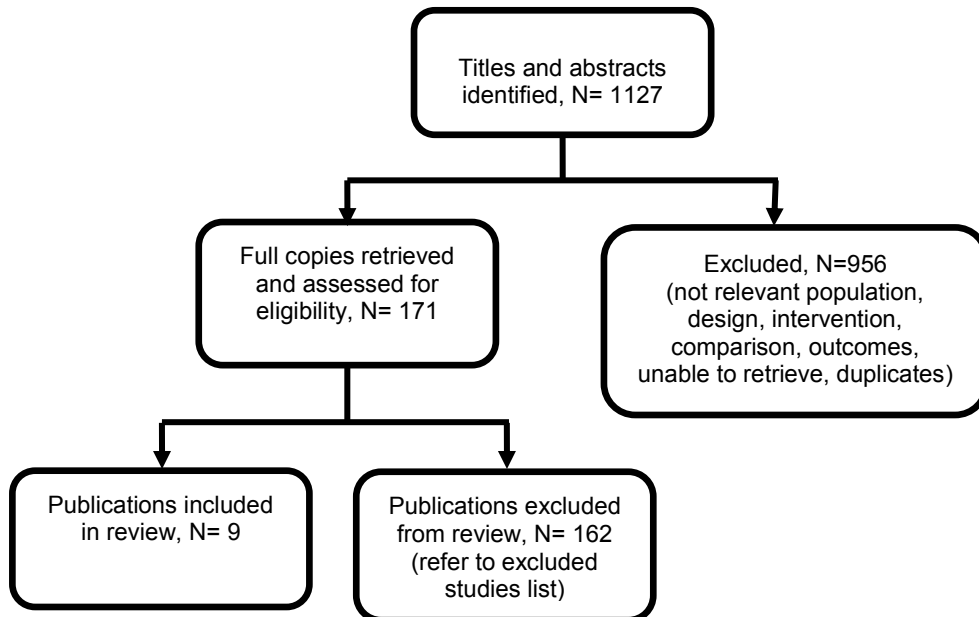
## K.8 T1N0 oesophageal cancer

What is the optimal management of T1N0 oesophageal cancer?



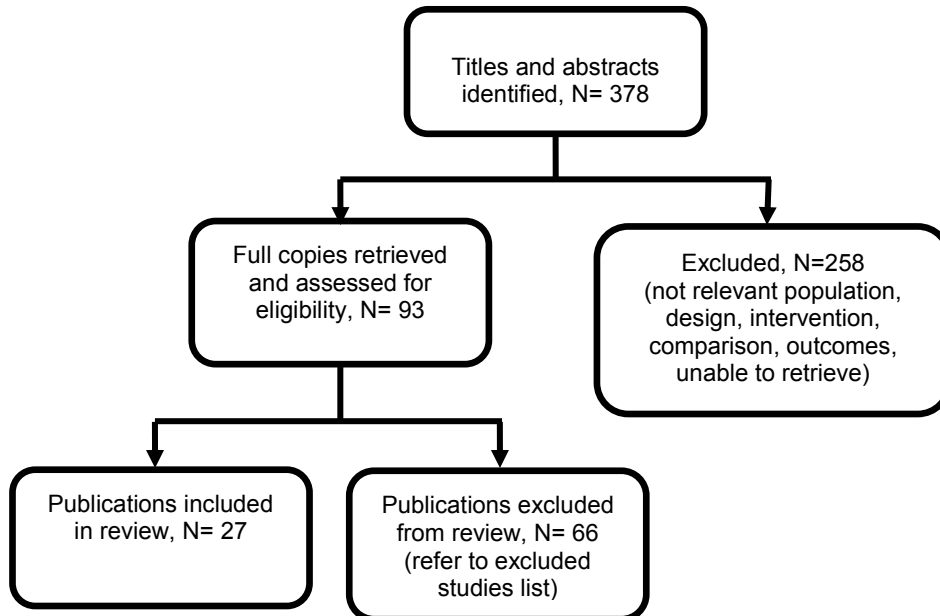
## K.9 Surgical treatment of oesophageal cancer

What is the most effective operative approach for the surgical treatment of oesophageal cancer?



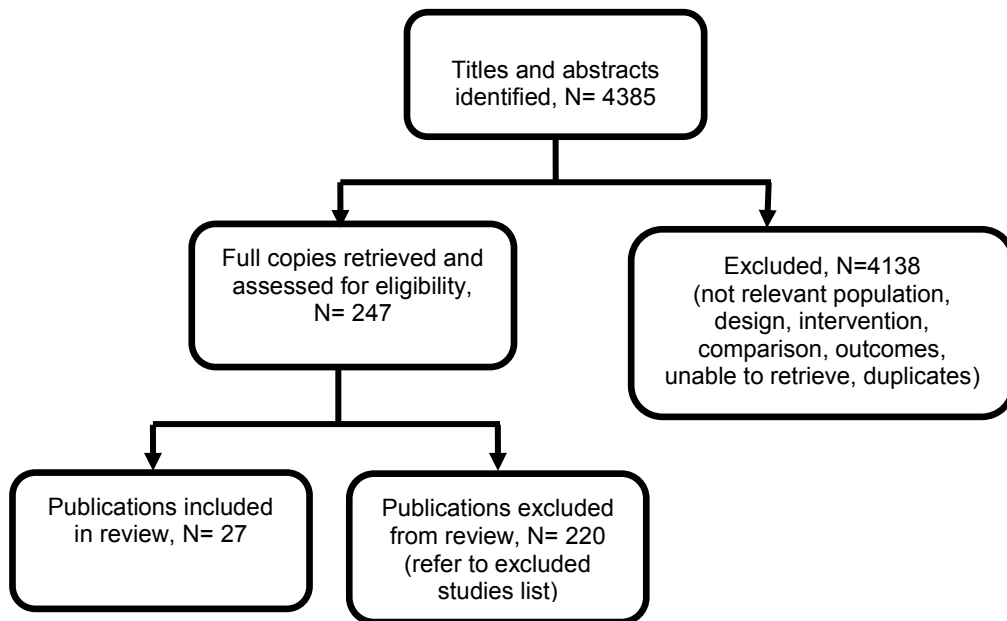
## K.10 Lymph node dissection in oesophageal and gastric cancer

Does the extent of lymph node dissection influence outcomes in adults with oesophageal and gastric cancer?



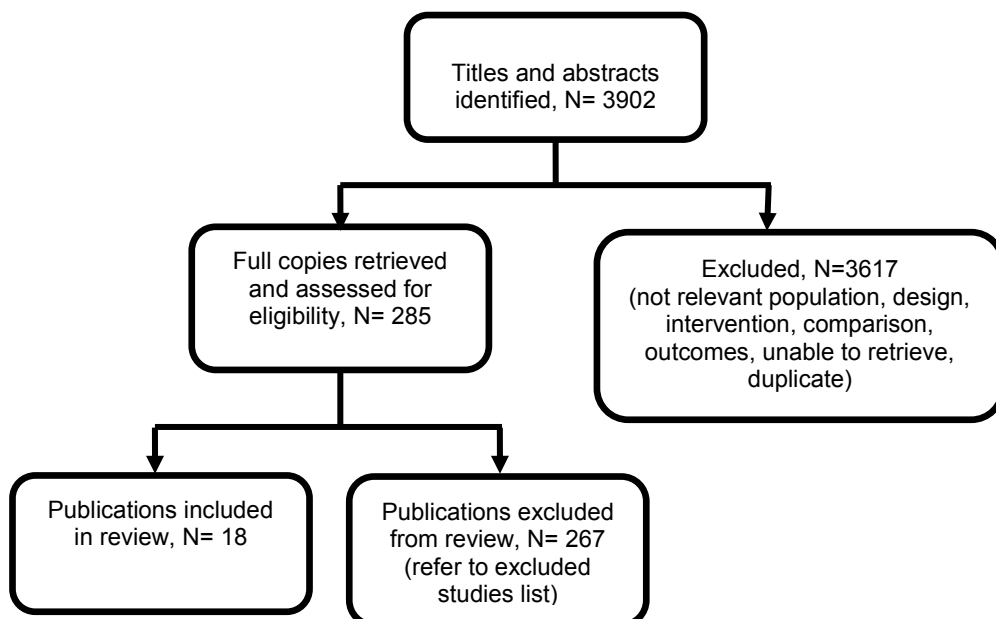
## K.11 Localised oesophageal and gastro-oesophageal junctional adenocarcinoma

What is the optimal choice of chemotherapy or chemoradiotherapy in relation to surgical treatment for people with localised oesophageal and gastro-oesophageal junctional cancer?



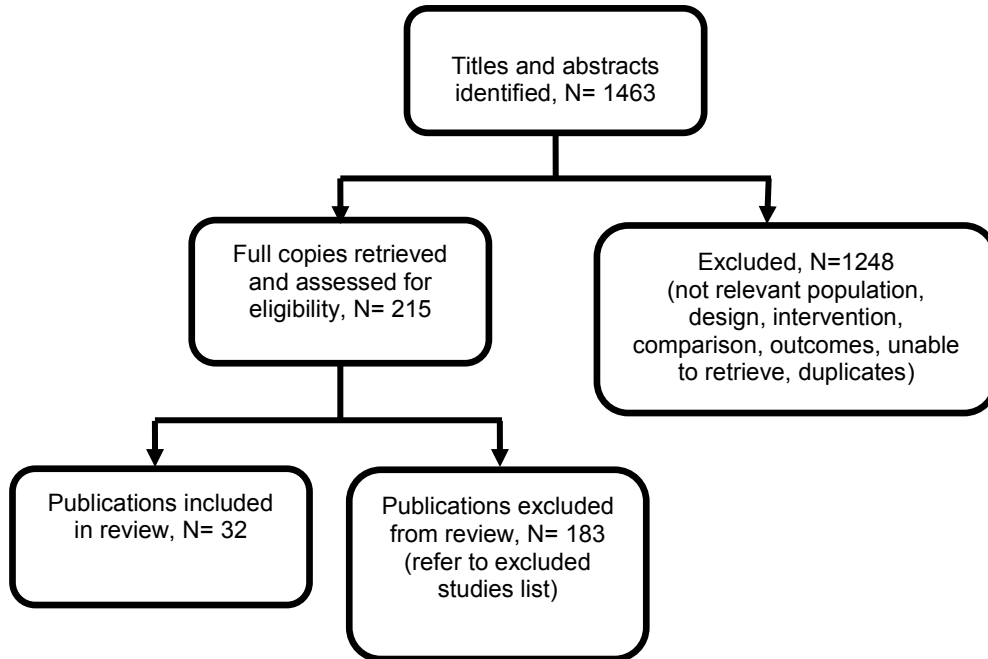
## K.12 Gastric Cancer

What is the optimal choice of chemotherapy or chemoradiotherapy in relation to surgical treatment for gastric cancer?



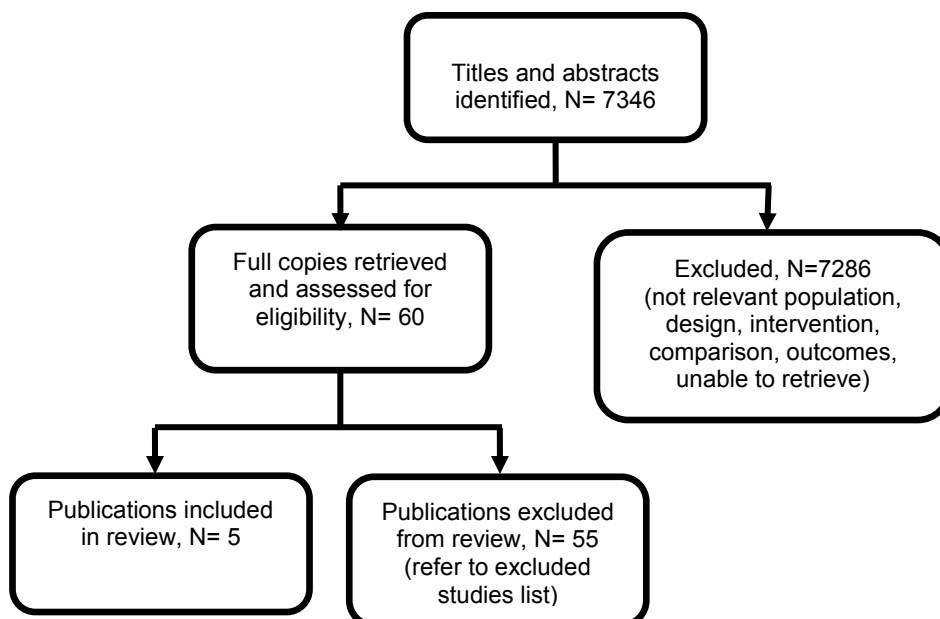
### K.13 Squamous cell carcinoma of the oesophagus

What is the most effective curative treatment of squamous cell carcinoma of the oesophagus?



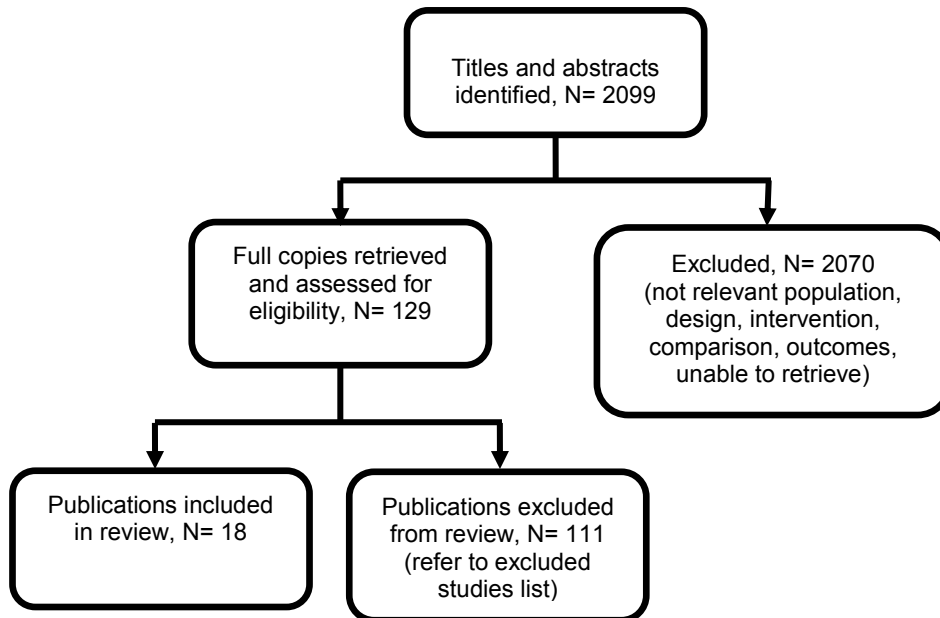
### K.14 Non-metastatic oesophageal cancer not suitable for surgery

What is the optimal treatment for adults with non-metastatic disease in the oesophagus who are not suitable for surgery?



## K.15 First-line palliative chemotherapy

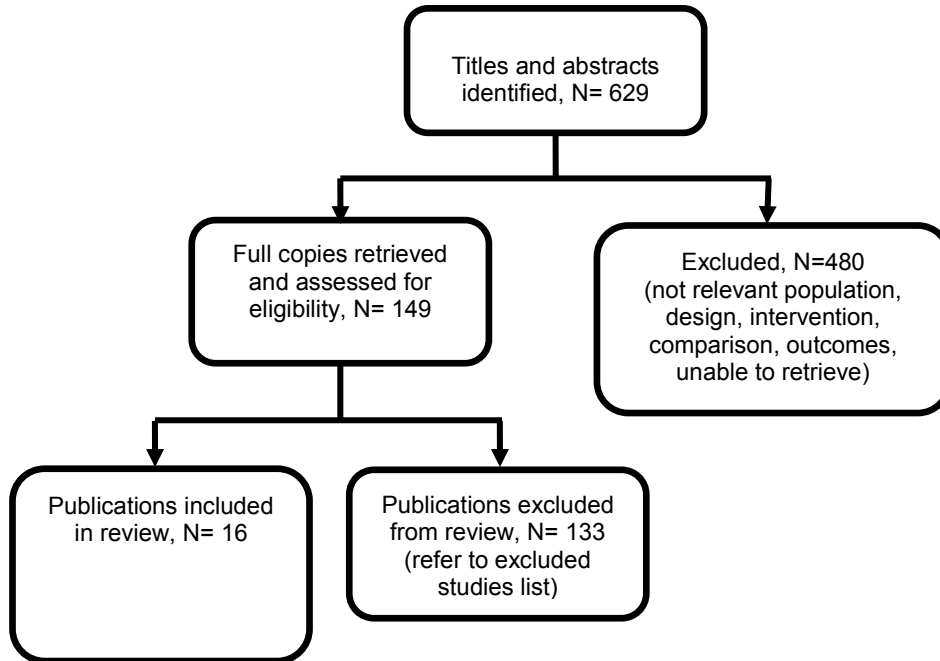
What is the optimal palliative first-line systemic chemotherapy for locally advanced and/or metastatic oesophago-gastric cancer?





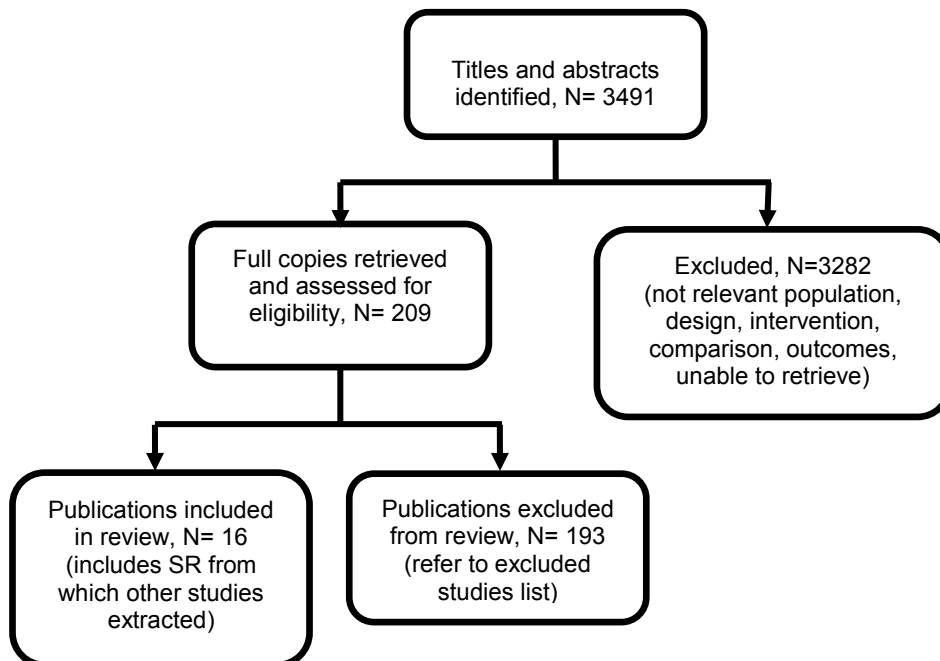
## K.16 Second-line palliative chemotherapy

What is the optimal palliative second-line chemotherapy for locally-advanced or metastatic oesophago-gastric cancer?



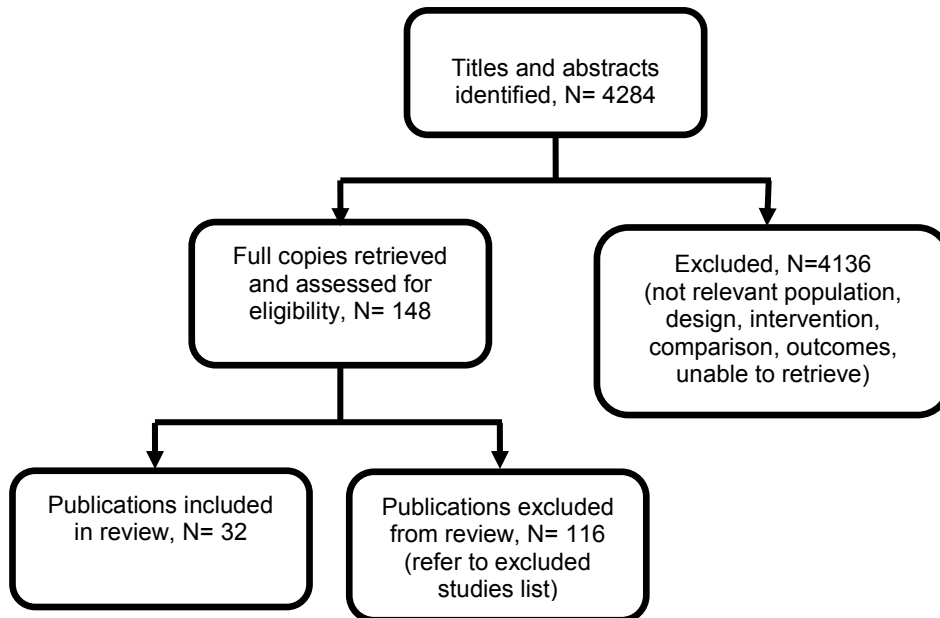
## K.17 Luminal obstruction

What is the optimal management of luminal obstruction for adults with oesophago-gastric cancer not amenable to treatment with curative intent?



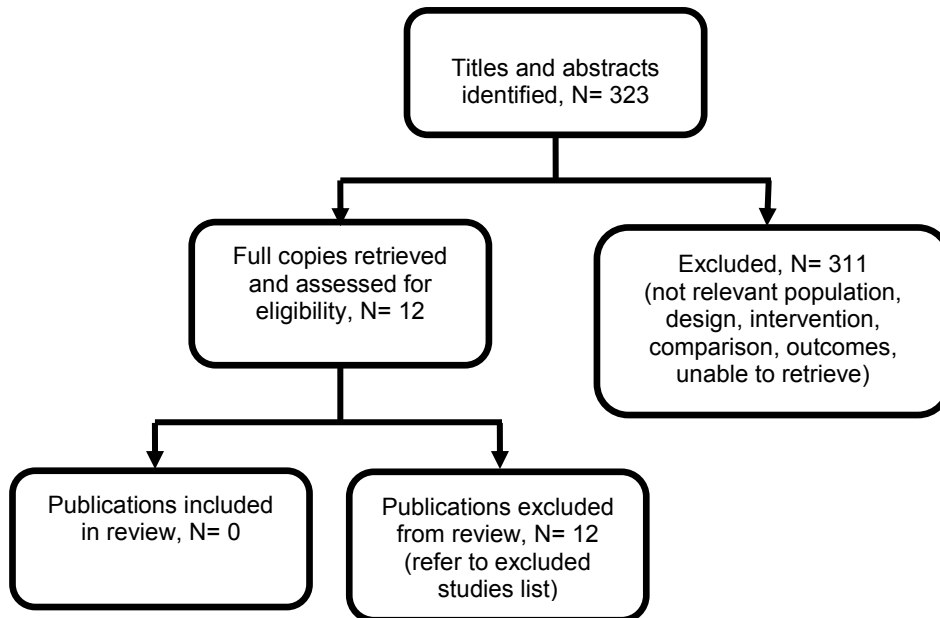
## K.18 Curative treatment

What is the effectiveness of nutritional support interventions for adults undergoing curative treatment for oesophago-gastric cancer?



## K.19 Palliative care

**What is the effectiveness of nutritional interventions in adults with oesophago-gastric cancer receiving palliative care?**



## K.20 Routine follow-up

**In adults who have undergone treatment for oesophago-gastric cancer with curative intent, with no symptoms or evidence of residual disease, what is the optimal**

**method(s), frequency, and duration of routine follow-up for the detection of concurrent disease?**

