

# Pancreatic cancer in adults: diagnosis and management

*Appendix E*

*Prisma Flow Charts*

*February 2018*

*Final*

*Developed by the National Guideline Alliance, hosted  
by the Royal College of Obstetricians and  
Gynaecologists*



### **Disclaimer**

The recommendations in this guideline represent the view of NICE, arrived at after careful consideration of the evidence available. When exercising their judgement, professionals are expected to take this guideline fully into account, alongside the individual needs, preferences and values of their patients or service users. The recommendations in this guideline are not mandatory and the guideline does not override the responsibility of healthcare professionals to make decisions appropriate to the circumstances of the individual patient, in consultation with the patient and/or their carer or guardian.

Local commissioners and/or providers have a responsibility to enable the guideline to be applied when individual health professionals and their patients or service users wish to use it. They should do so in the context of local and national priorities for funding and developing services, and in light of their duties to have due regard to the need to eliminate unlawful discrimination, to advance equality of opportunity and to reduce health inequalities. Nothing in this guideline should be interpreted in a way that would be inconsistent with compliance with those duties.

NICE guidelines cover health and care in England. Decisions on how they apply in other UK countries are made by ministers in the Welsh Government, Scottish Government, and Northern Ireland Executive. All NICE guidance is subject to regular review and may be updated or withdrawn.

### **Copyright**

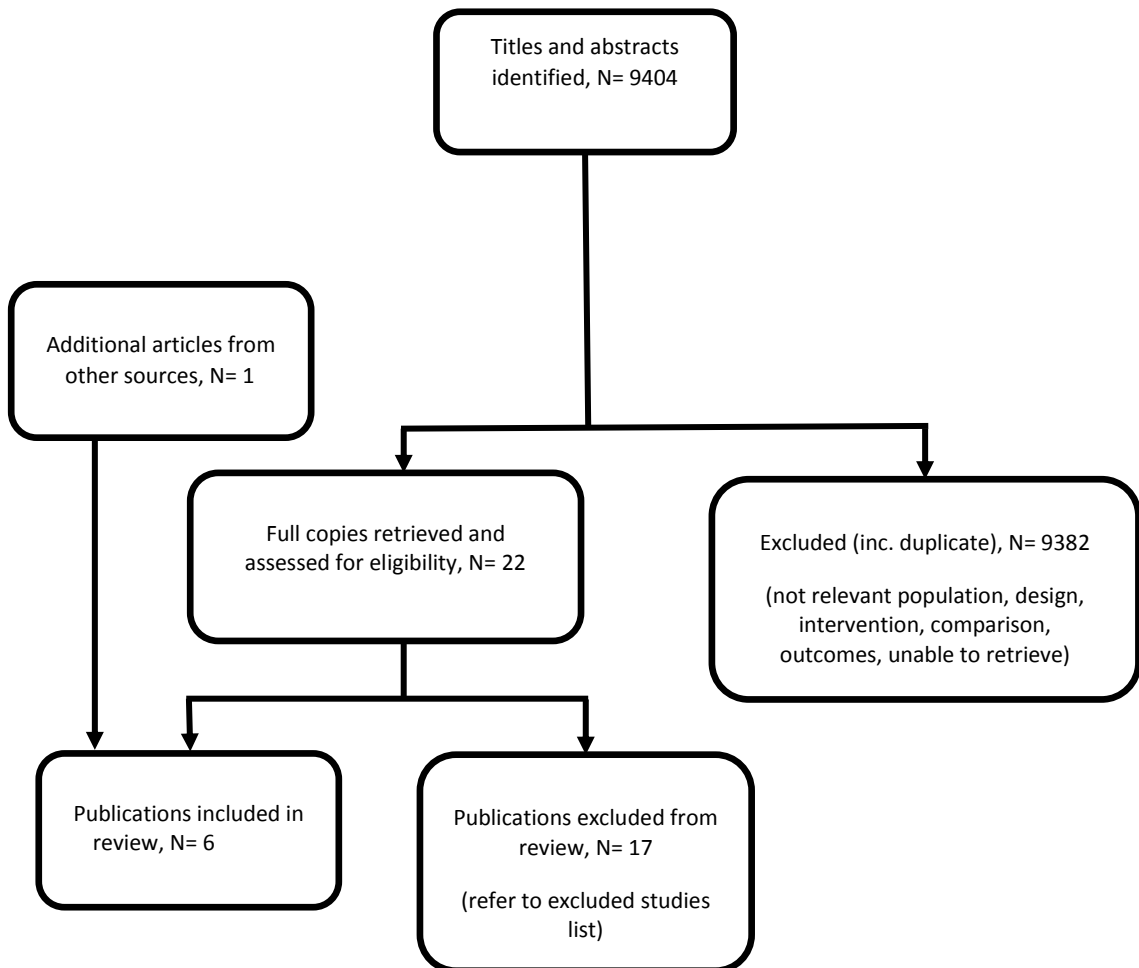
© NICE 2018. All rights reserved. Subject to [Notice of rights](#).

# Contents

Appendix E: Prisma Flow Charts .....	5
E.1 People with jaundice.....	5
E.2 People without jaundice but with a pancreatic abnormality .....	6
E.3 Pancreatic cysts .....	7
E.4 People with inherited high risk of pancreatic cancer .....	8
E.5 Referral to specialist multidisciplinary teams.....	9
E.6 Staging .....	10
E.7 Psychological support needs .....	11
E.8 Pain .....	12
E.9 Nutritional interventions .....	13
E.10 Biliary obstruction.....	14
E.11 Duodenal obstruction .....	15
E.12 Neo-adjuvant treatment.....	16
E.13 Resectable and borderline resectable pancreatic cancer .....	17
E.14 Adjuvant treatment.....	18
E.15 Follow-up for people with resected pancreatic cancer .....	19
E.16 Management of locally advanced pancreatic cancer .....	20
E.17 Management of metastatic pancreatic cancer .....	21

# 1 Appendix E: Prisma Flow Charts

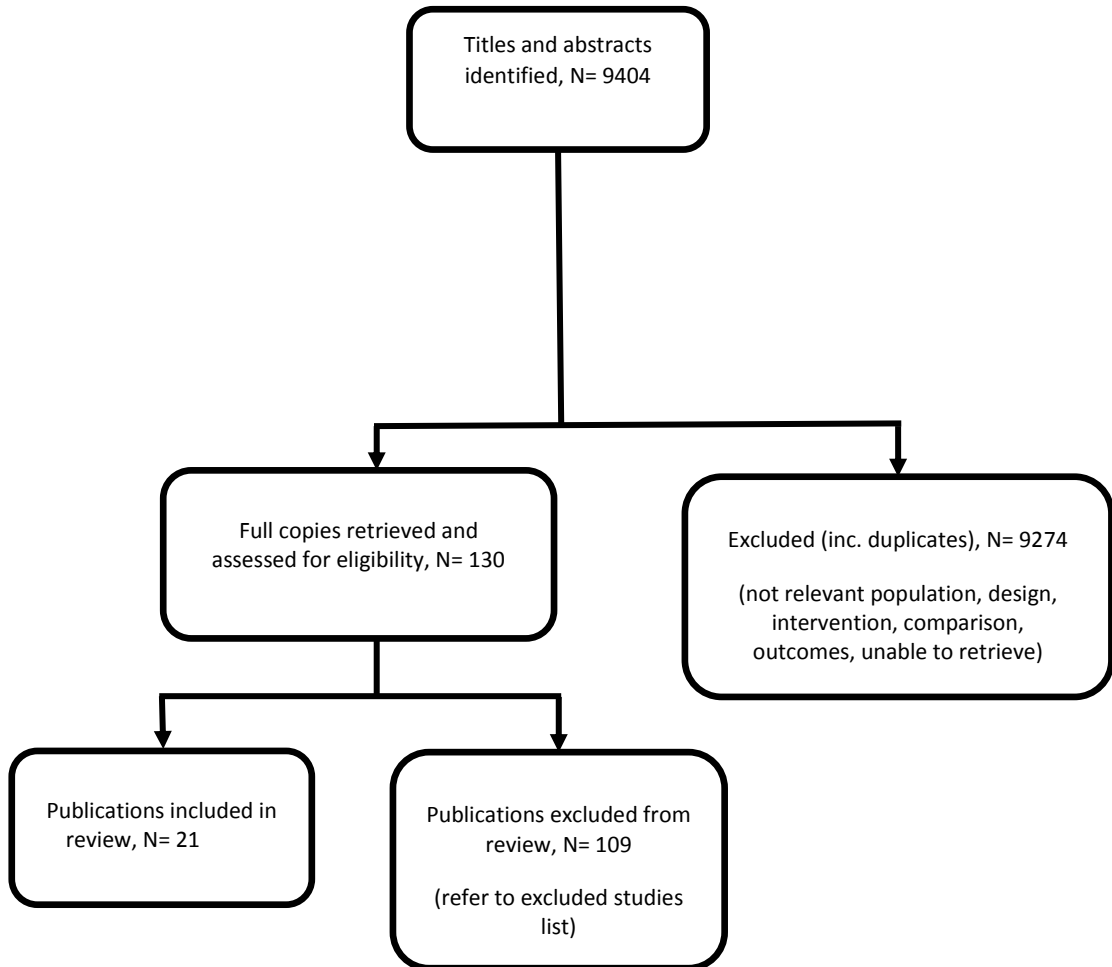
## E.1.2 People with jaundice



3

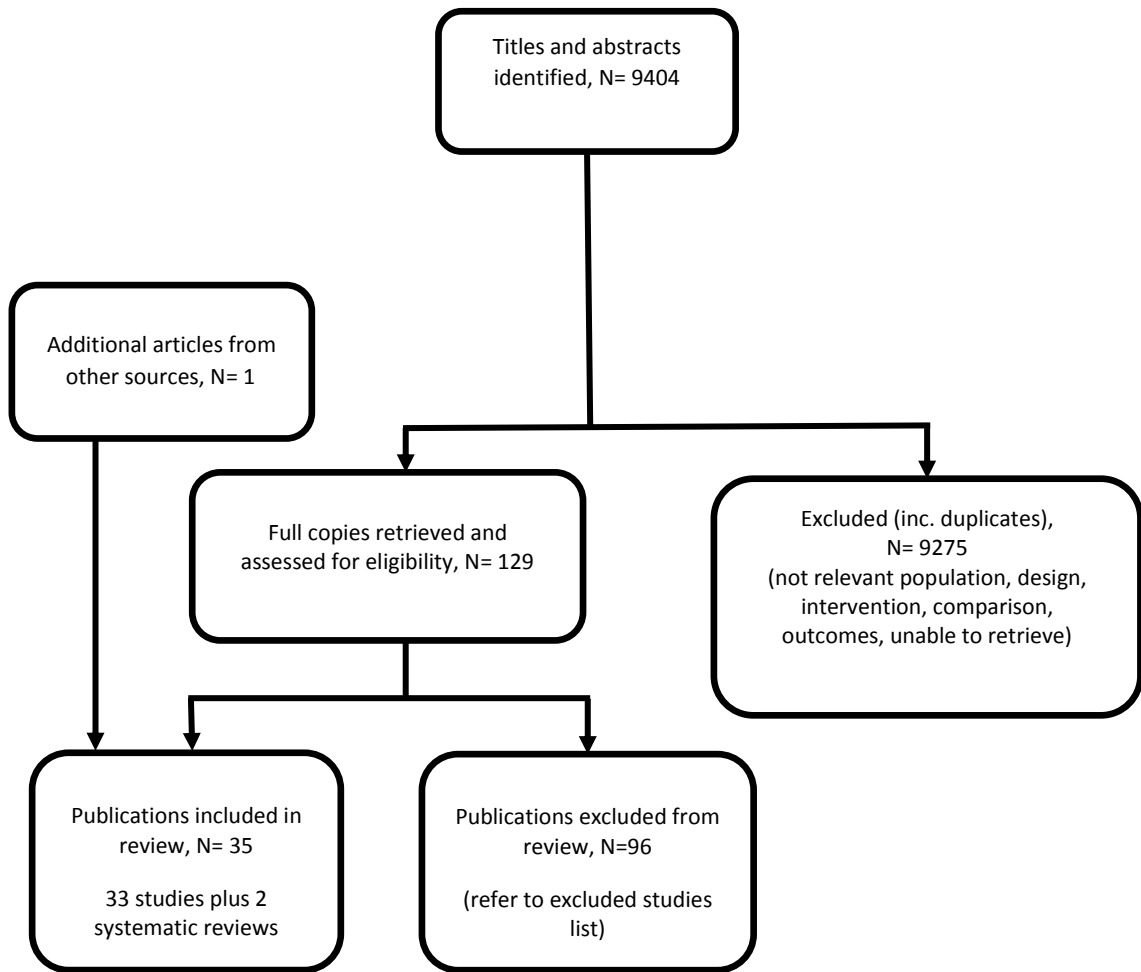
4

## E.2<sub>1</sub> People without jaundice but with a pancreatic abnormality



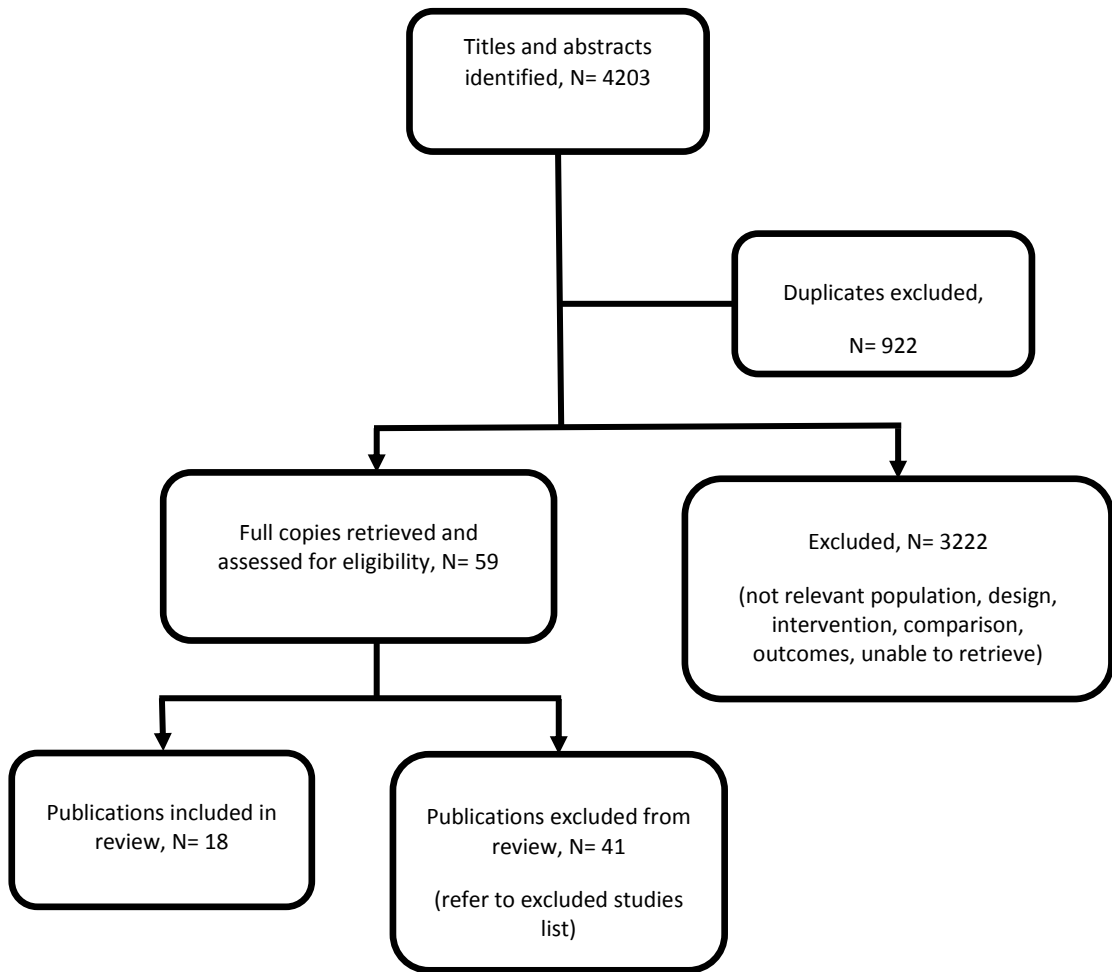
2  
3

### E.3<sub>1</sub> Pancreatic cysts



2  
3

## E.4<sub>1</sub> People with inherited high risk of pancreatic cancer

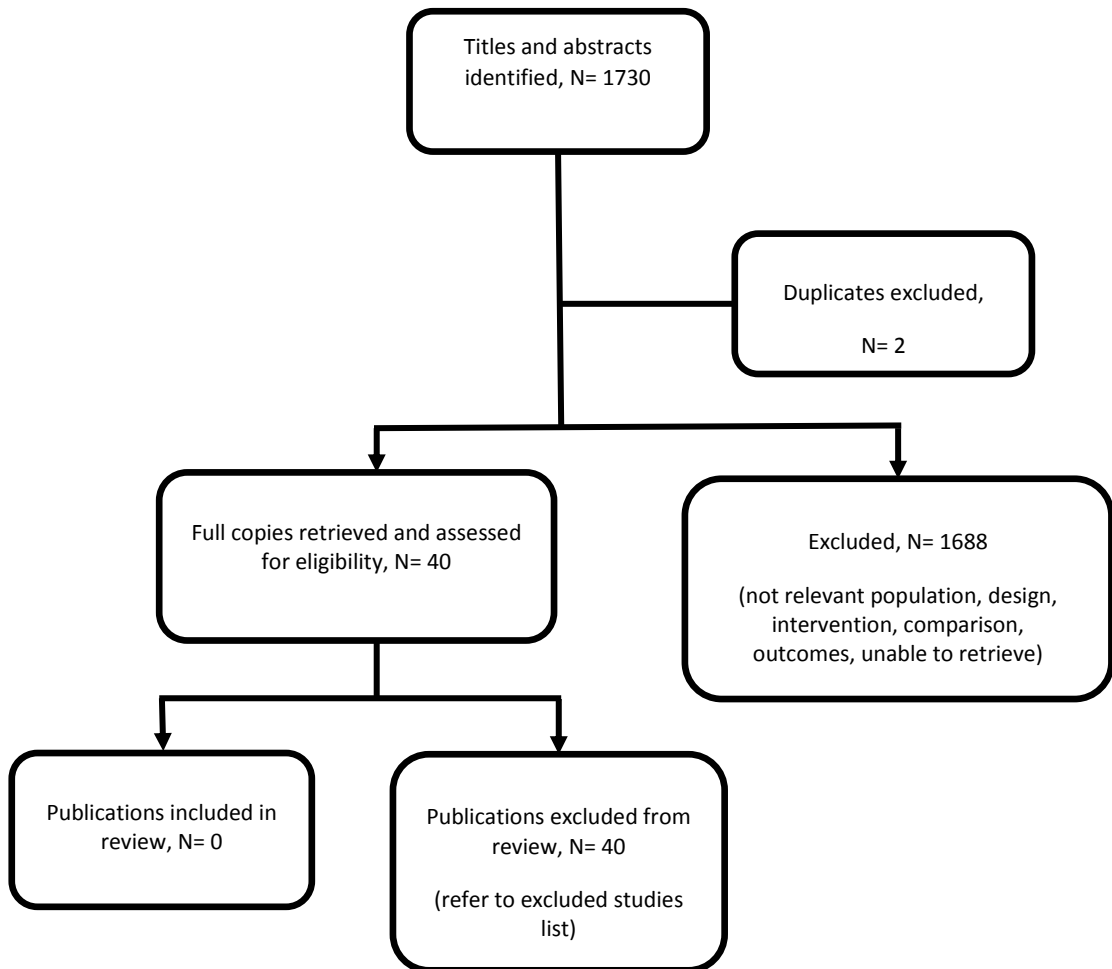


2

3



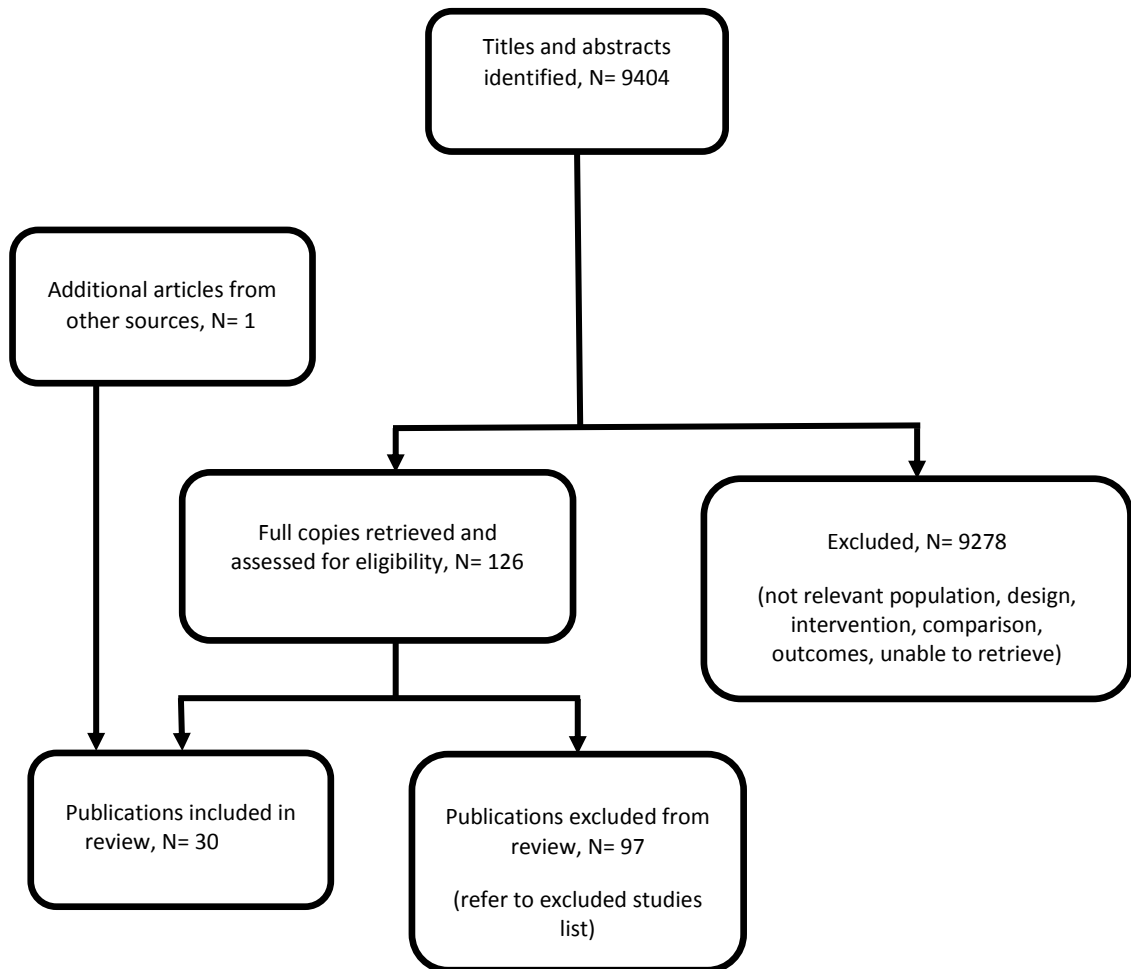
## E.5<sub>1</sub> Referral to specialist multidisciplinary teams



2

3

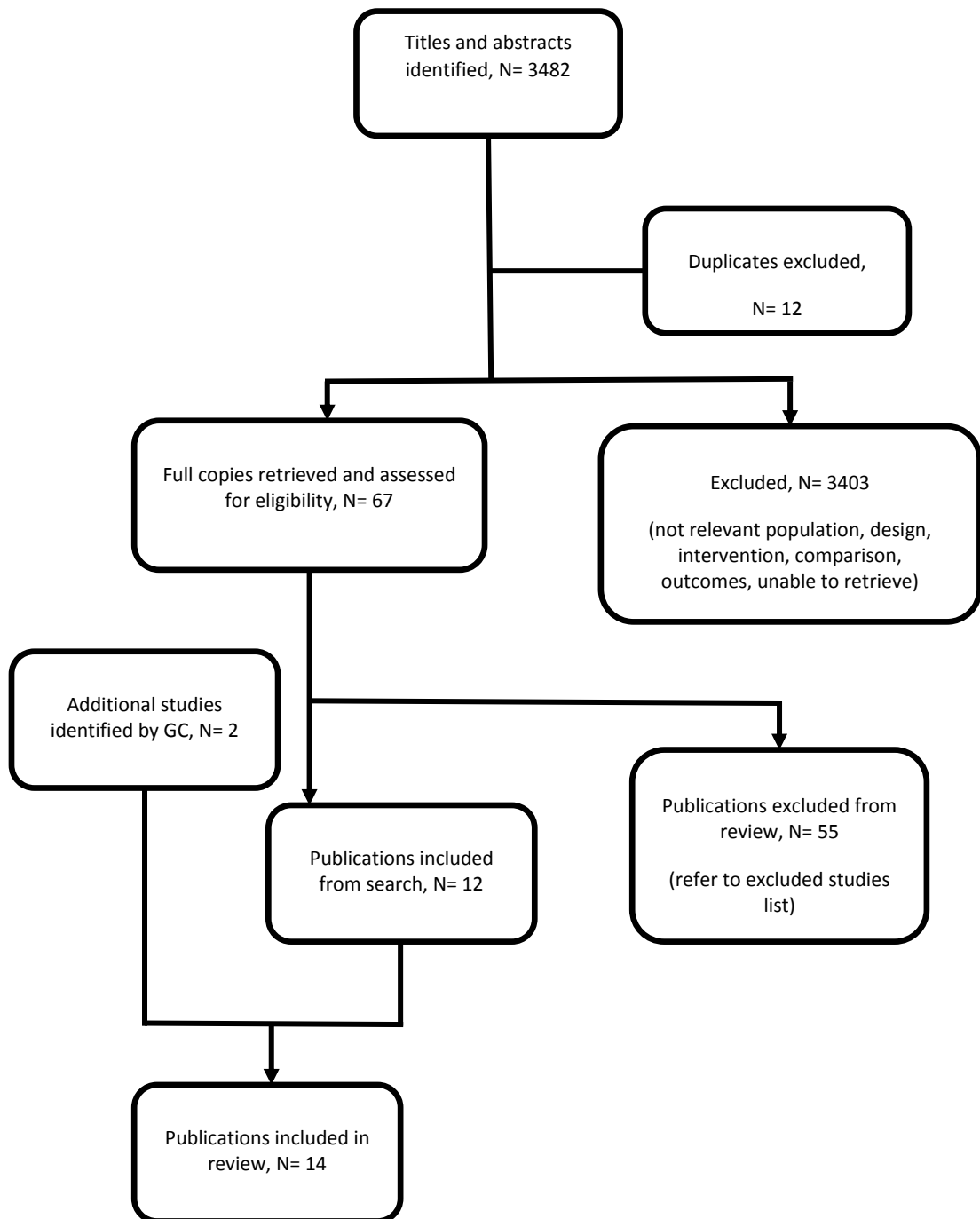
## E.61 Staging



2

3

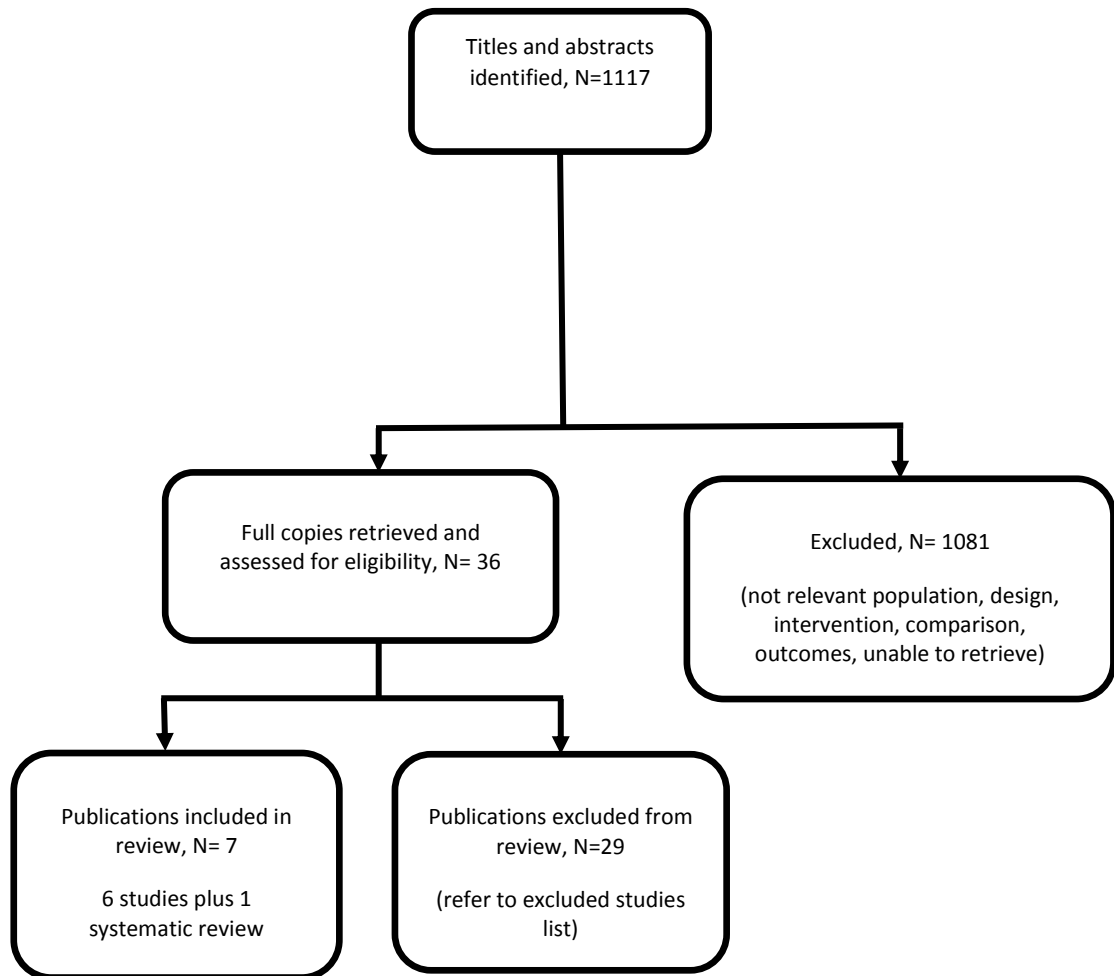
## E.7.1 Psychological support needs



2

3

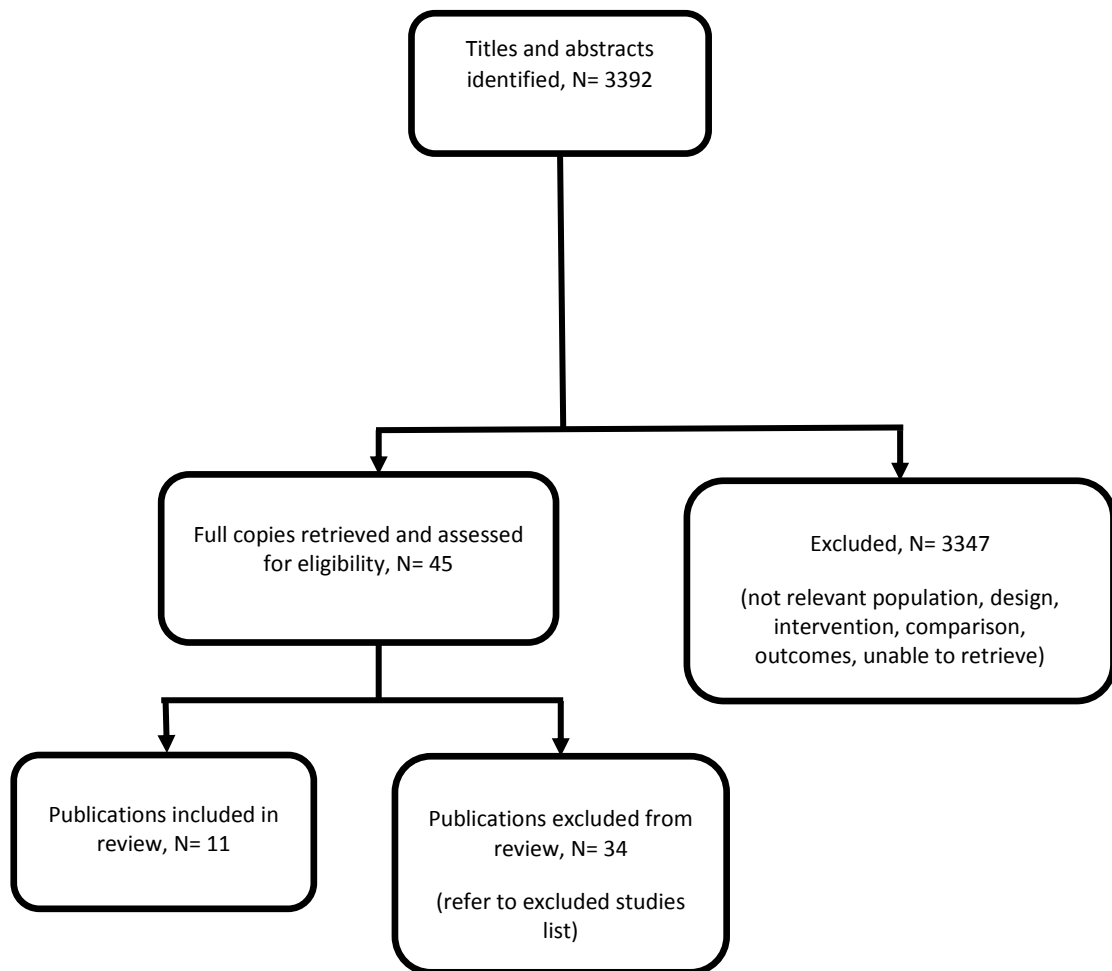
## E.81 Pain



2

3

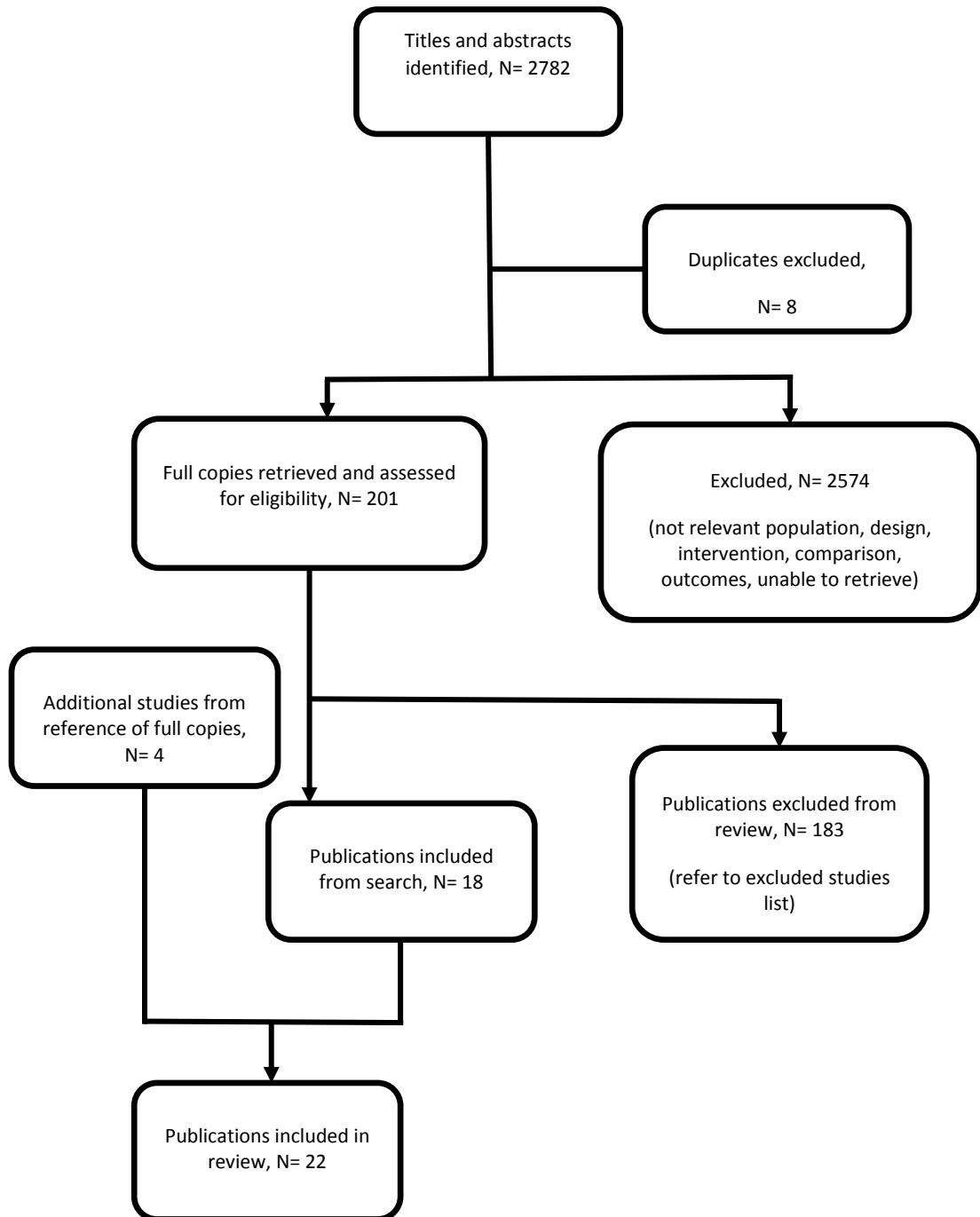
## E.9<sub>1</sub> Nutritional interventions



2

3

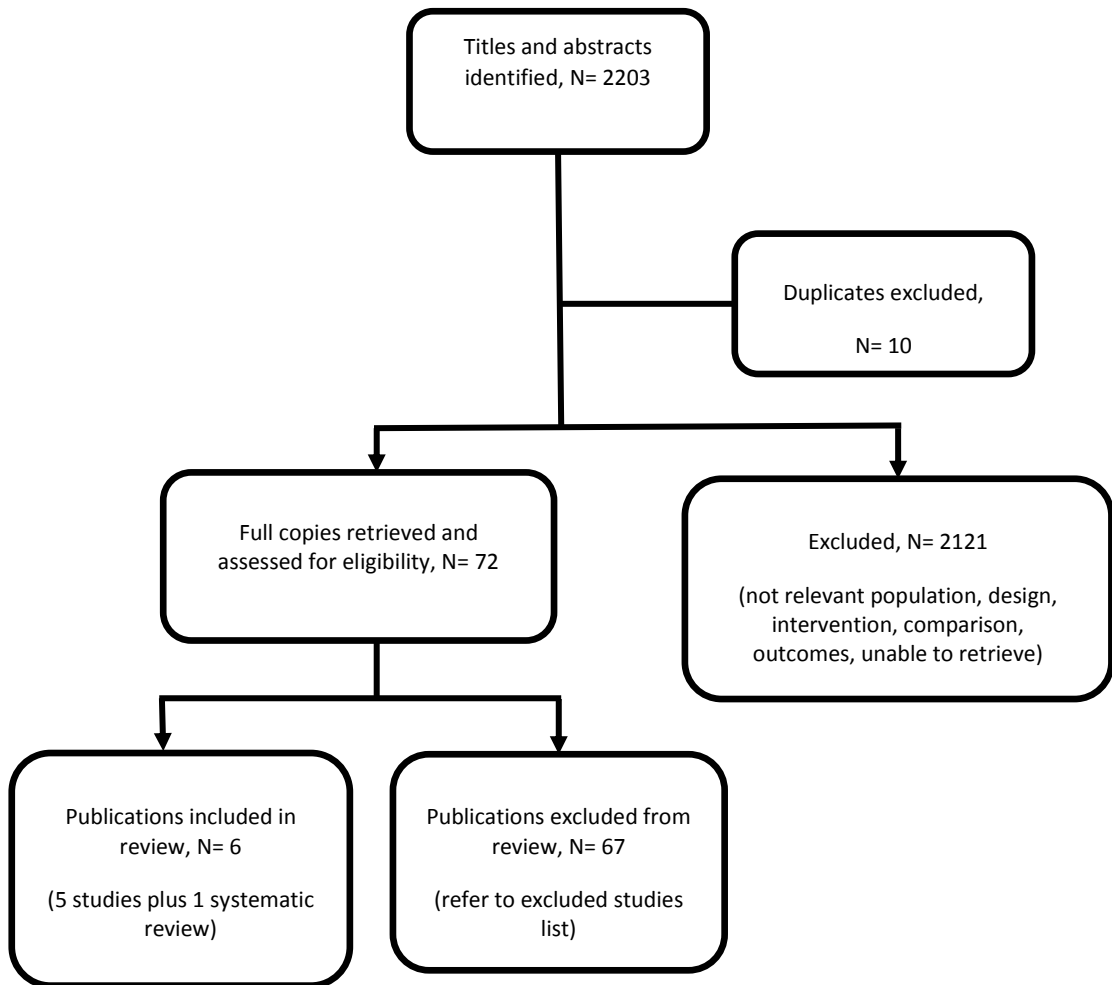
## E.10<sub>1</sub> Biliary obstruction



2

3

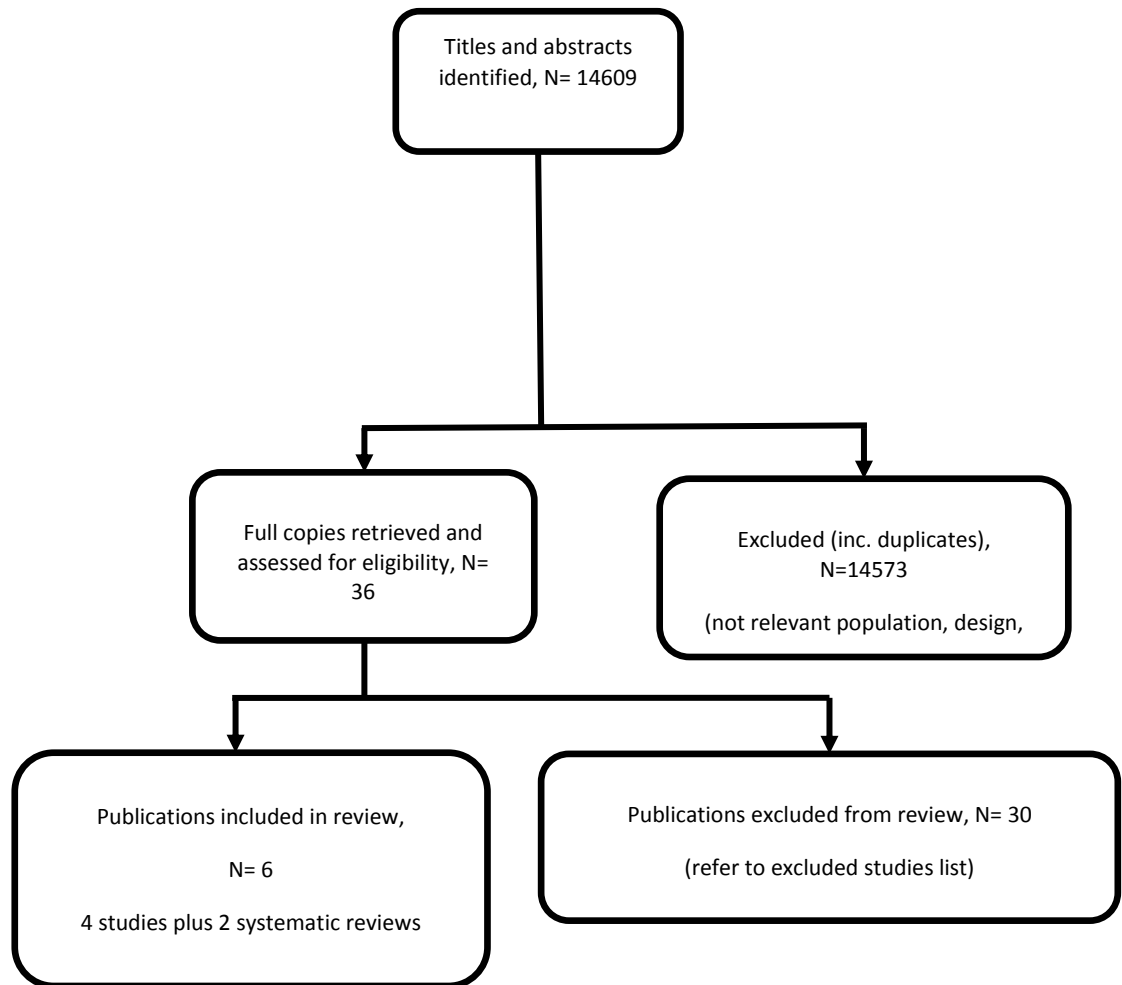
## E.11<sub>1</sub> Duodenal obstruction



2

3

## E.12<sub>1</sub> Neo-adjuvant treatment

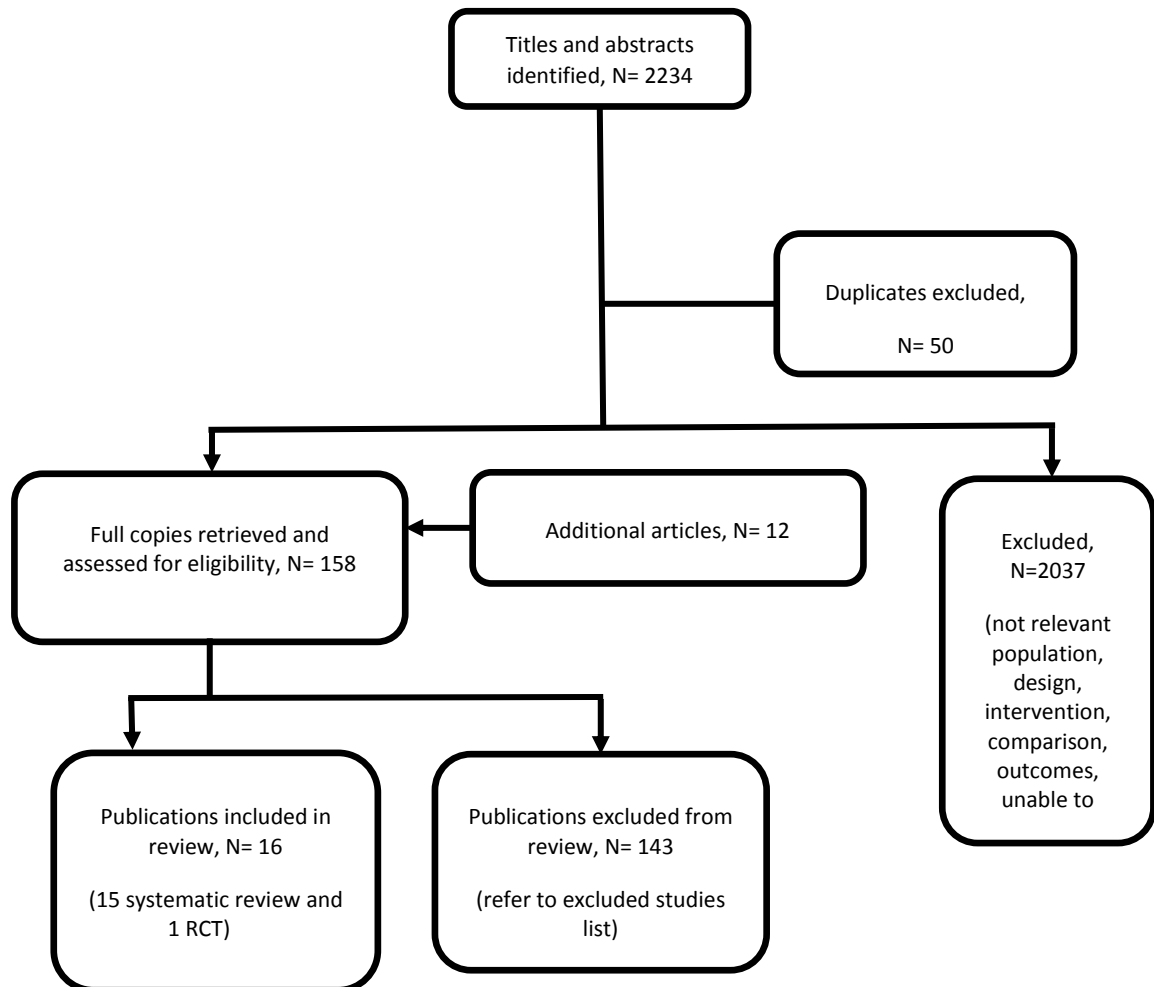


2

3

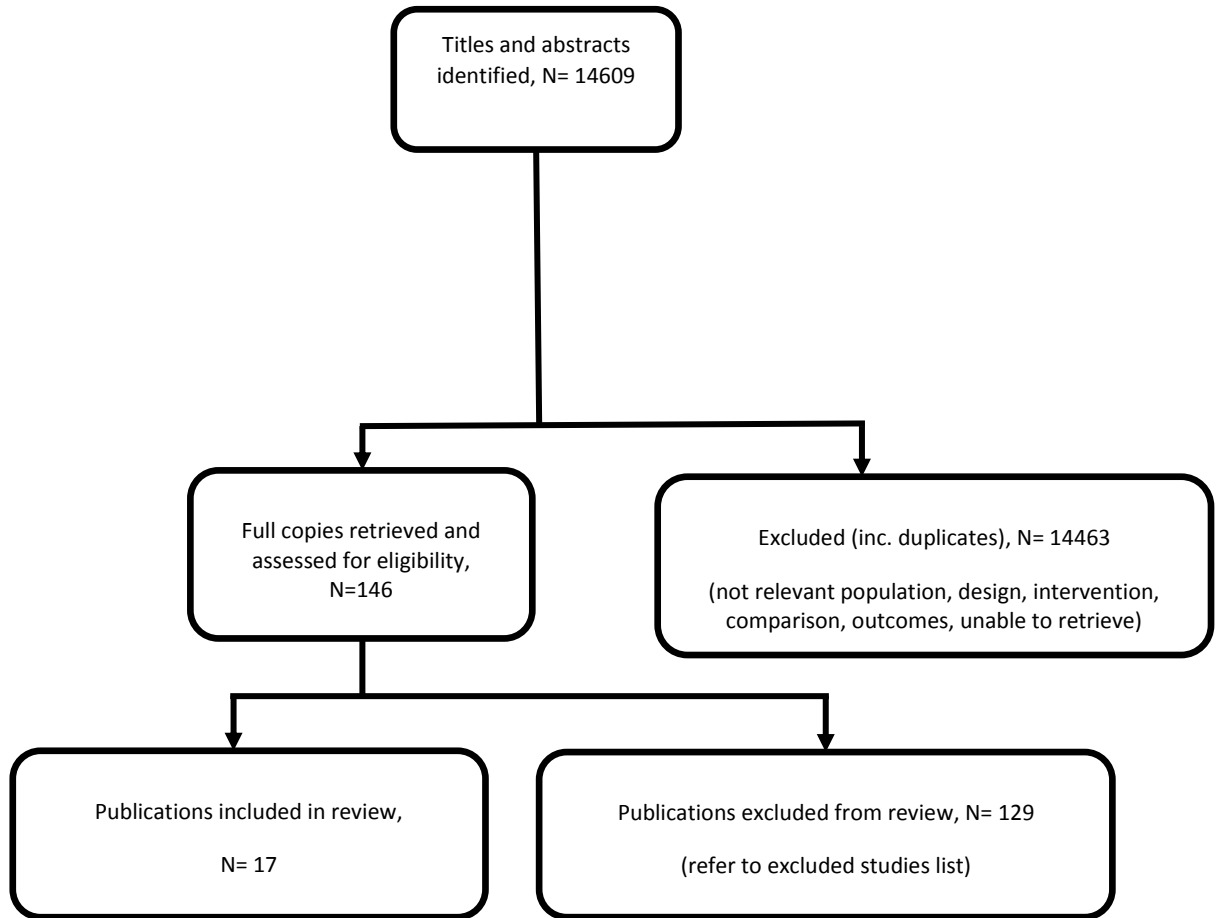


## E.13<sub>1</sub> Resectable and borderline resectable pancreatic cancer



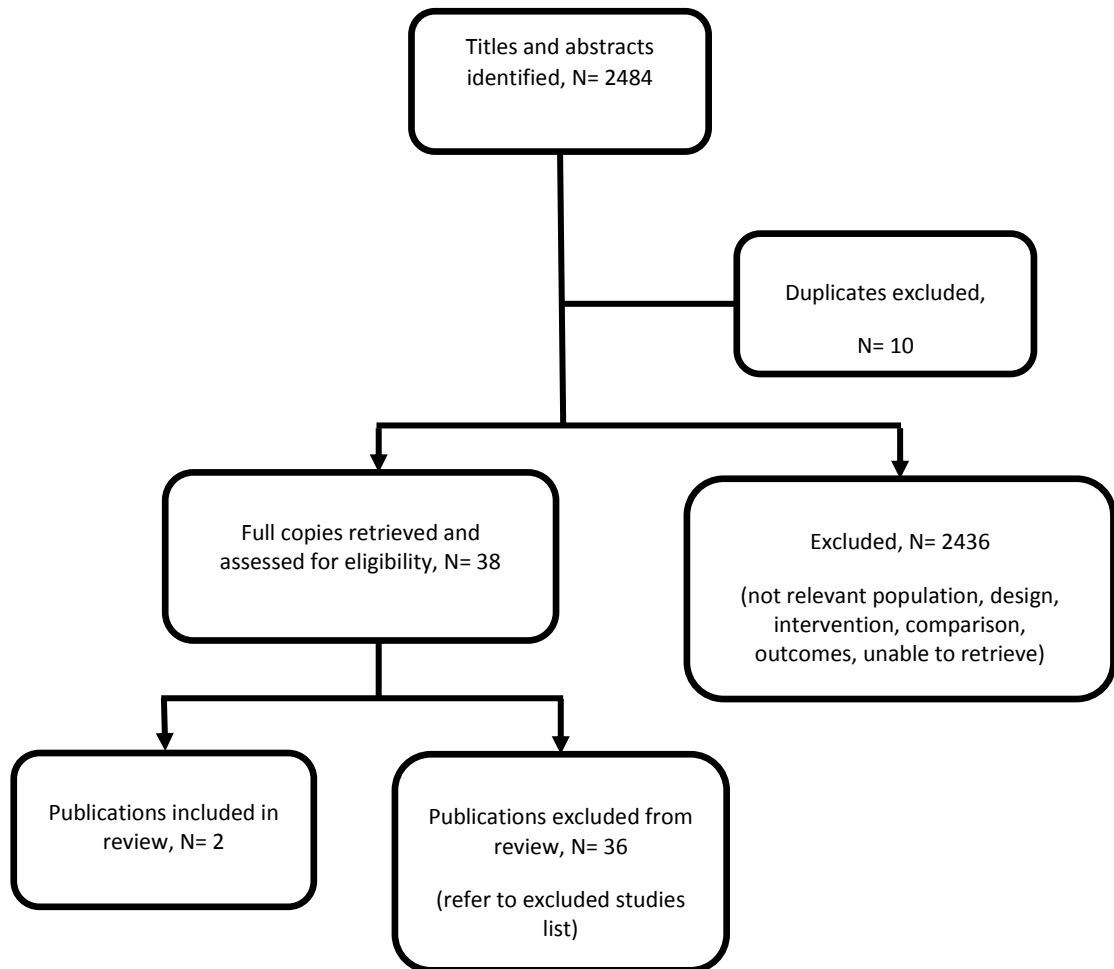
2  
3

## E.14<sub>1</sub> Adjuvant treatment



2  
3

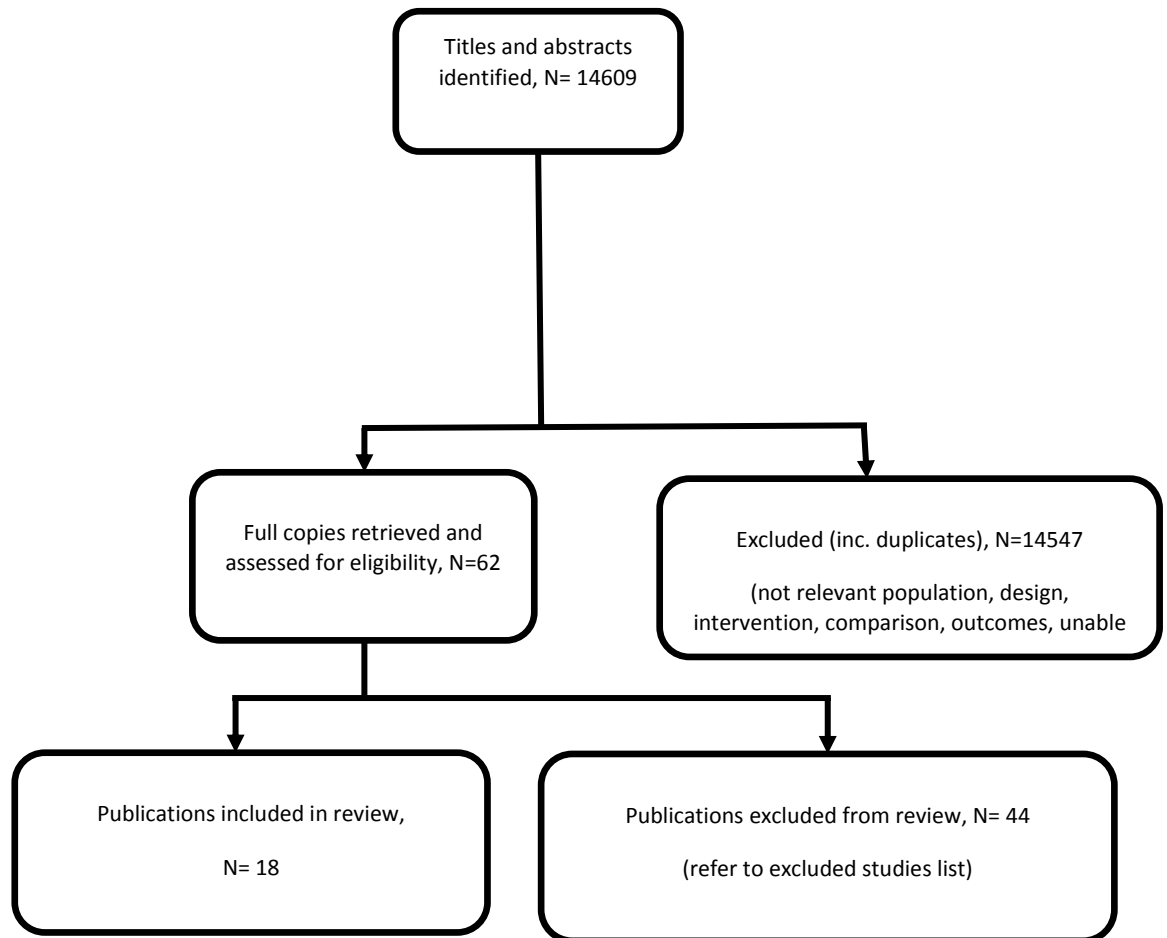
## E.15<sub>1</sub> Follow-up for people with resected pancreatic cancer



2

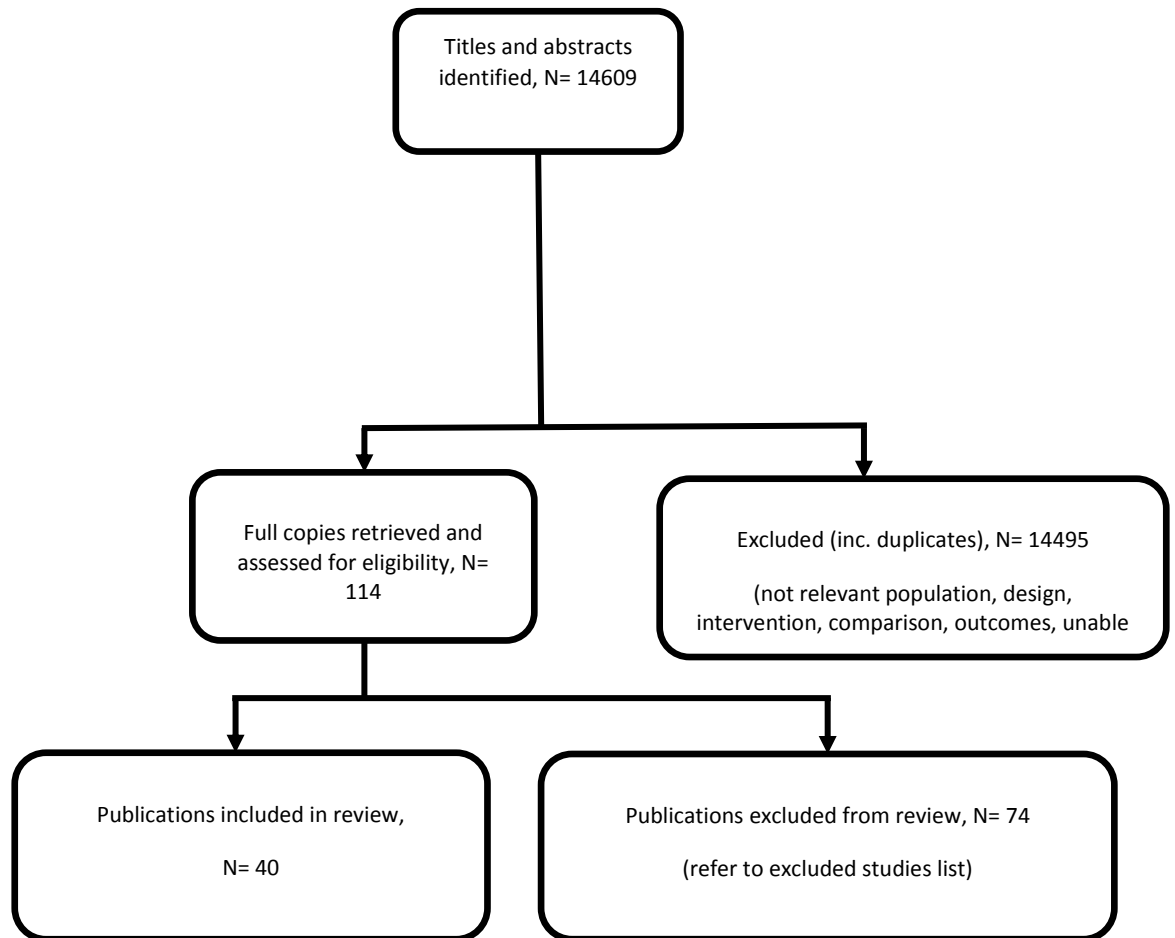
3

## E.16<sup>1</sup> Management of locally advanced pancreatic cancer



2  
3

## E.17<sub>1</sub> Management of metastatic pancreatic cancer



2  
3  
4