

Putting NICE guidance into practice

Implementation pack: Developing a multi-agency local autism team

Case study example

This example of an effective autism service has been reproduced with permission of the Joint Commissioning Panel for Mental Health from a forthcoming guide to support clinical commissioning groups in implementing the adult autism strategy.

Published: January 2014



South West Yorkshire Partnership 
NHS Foundation Trust

Based at South West Yorkshire Partnership NHS FT

A Specialist MDT Team for both adult ADHD and ASC led by a Consultant Psychiatrist. This Service is developing a Hidden Impairments pathway solution but is presently delivering separate (but similar) pathways for ADHD and autism based on the Recovery approach.

Suggested staff mix per 250 000 total population for the Autism Team (joining up the ADHD Team with the Autism Team leads to a better experience for service users and the ability to offer a better value for money offer for commissioners due to reduced overheads and better skill mix).

- 0.5 wte psychiatry
- 1.0 wte clinical psychology
- 1.0 wte occupational therapist

- 0.5 wte social work
- 0.5 wte admin
- 0.5 wte nursing

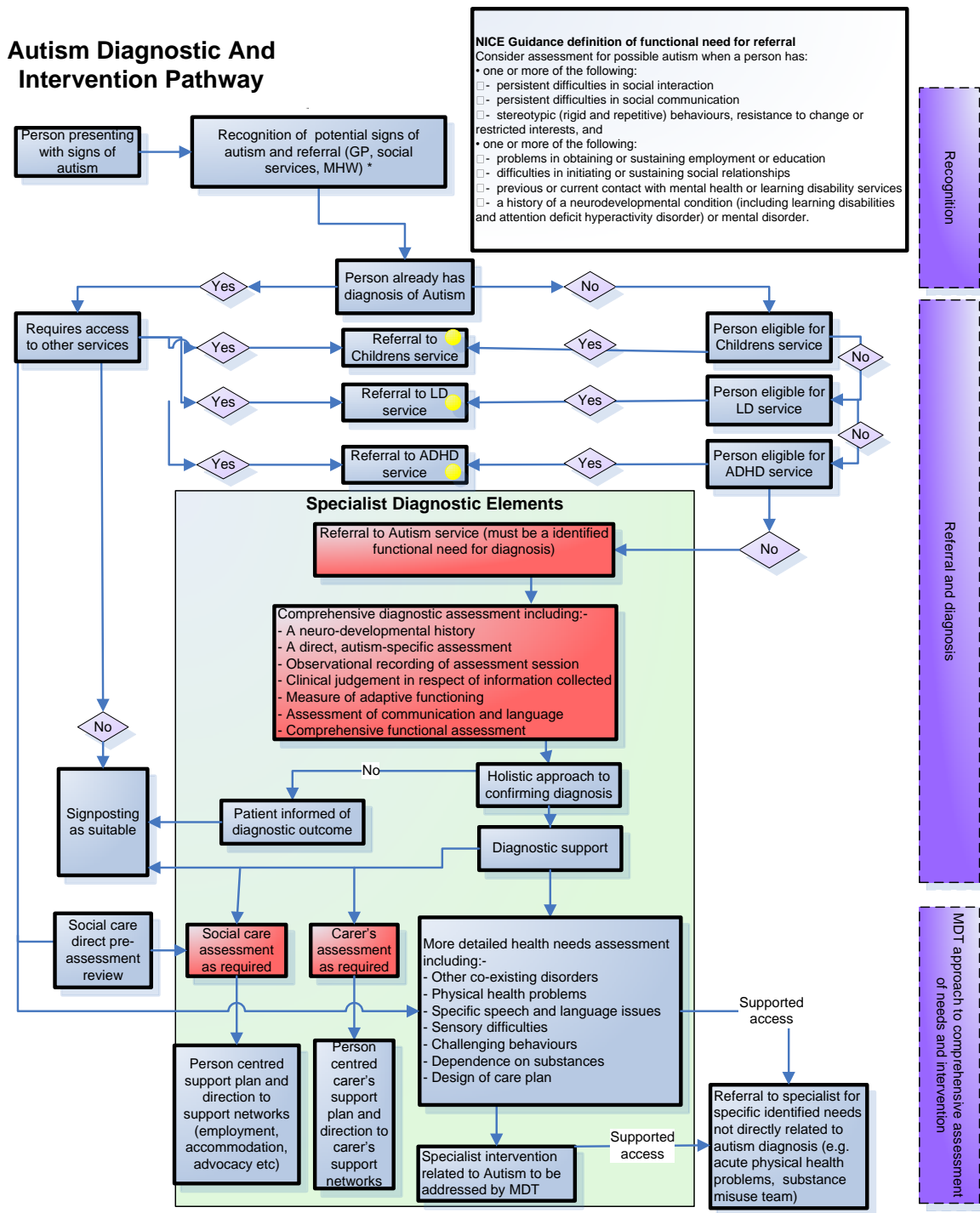
Approximate costs £200,000.

This model, developed in Partnership with LAs, CCGs and service users across Wakefield, Barnsley, Kirklees and Calderdale, is designed to meet the requirements of NICE Guideline CG142.

Objectives of the Service based on this model include:

- To operate to evidence based pathways covering the defined presentations and conditions delivering safe, person-centred care;
- To work collaboratively with other providers to ensure that transfer of care protocols are developed and followed which ensure that service users have a seamless integrated pathway;
- Develop, implement and embed seamless integrated pathways to prevent delays and minimise duplication;
- Provide the service from a safe environment suitable for this group of adults;
- Ensuring the provision of multi-agency training about signs and symptoms of autism and training and support on the operation of the pathway;
- Making sure the relevant professionals (health and social care, GP's, housing, employment and the independent sector) are aware of the local autism pathway and how to access services;
- Supporting the smooth transition to adult social care services for young people going through the pathway;
- Provide provision of a range of low cost preventative interventions to promote wellbeing, social inclusion and minimize reliance on other health and social care services;
- Provide support for families and people with autism.

Autism Diagnostic And Intervention Pathway



- Benefits**
- As per option 2
 - Includes specialist intervention as part of the pathway
 - Includes referral into the service for health and social care needs assessment when already has diagnosis of Autism
 - Flow through the pathway improved (improved efficiency and patient experience) by having all service delivered by the same team (reduces transfers between services)
 - Social care part of multidisciplinary team approach giving an integrated person-centred approach
- Drawback**
- Increase elements will increase cost/resources
 - Unknown demand related to those that already have a diagnosis and requiring referral for health and social care needs assessment and intervention
 - Does not elaborate on what signposting or social support is available.

Contact Dr Marios Adamou, Consultant Psychiatrist for further information on 01924328102.